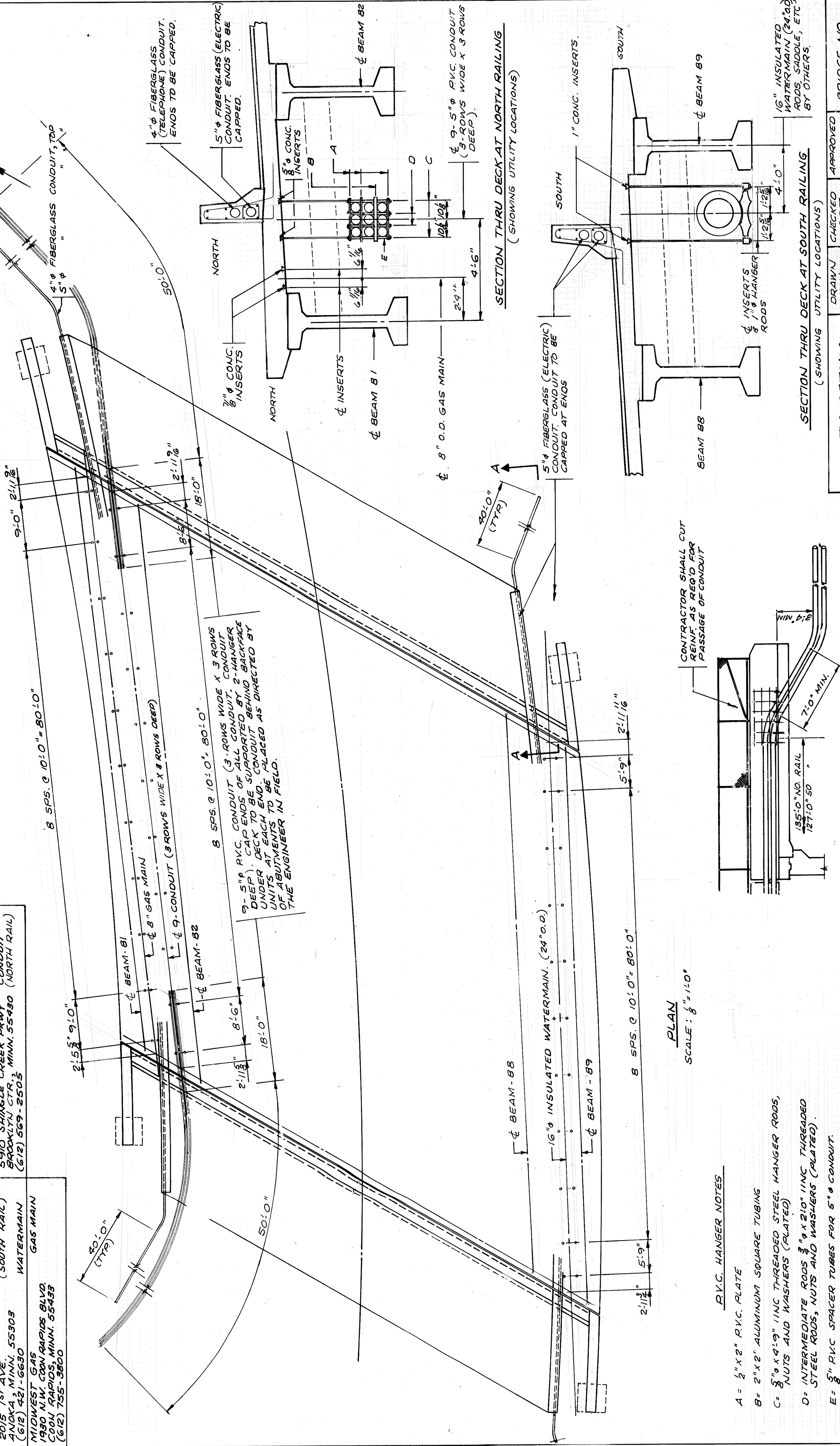


UTILITIES

ANOKA COUNTY HWY DEPT. 1440 BUNKER LAKE BLVD. ANDOVER, MINN. 55304 (612) 754-3520	FUTURE UTILITIES	ANOKA ELECTRIC CO-OP 2022 N. FERRY ST. ANOKA, MINN. 55303 (612) 421-3761	POWER CONDUIT (NORTH RAIL)
CITY OF ANOKA 2015 1ST AVE. ANOKA, MINN. 55303 (612) 421-6630	POWER CONDUIT (SOUTH RAIL)	U.S. WEST COMM. 5910 SHINGLE CREEK PKWY BROOKLYN CTR., MINN. 55430 (612) 569-2505	TELEPHONE CONDUIT (NORTH RAIL)
MIDWEST GAS 1930 N.W. CON RAPIDS BLVD. COOK RAPIDS, MINN. 55433 (612) 755-3800	WATERMAIN GAS MAIN		

NOTE:
CONTRACTOR SHALL CONTACT THE CITY OF ANOKA & MIDWEST GAS PRIOR TO BACKFILLING ABUTMENTS. SEE SPECIAL PROVISIONS.

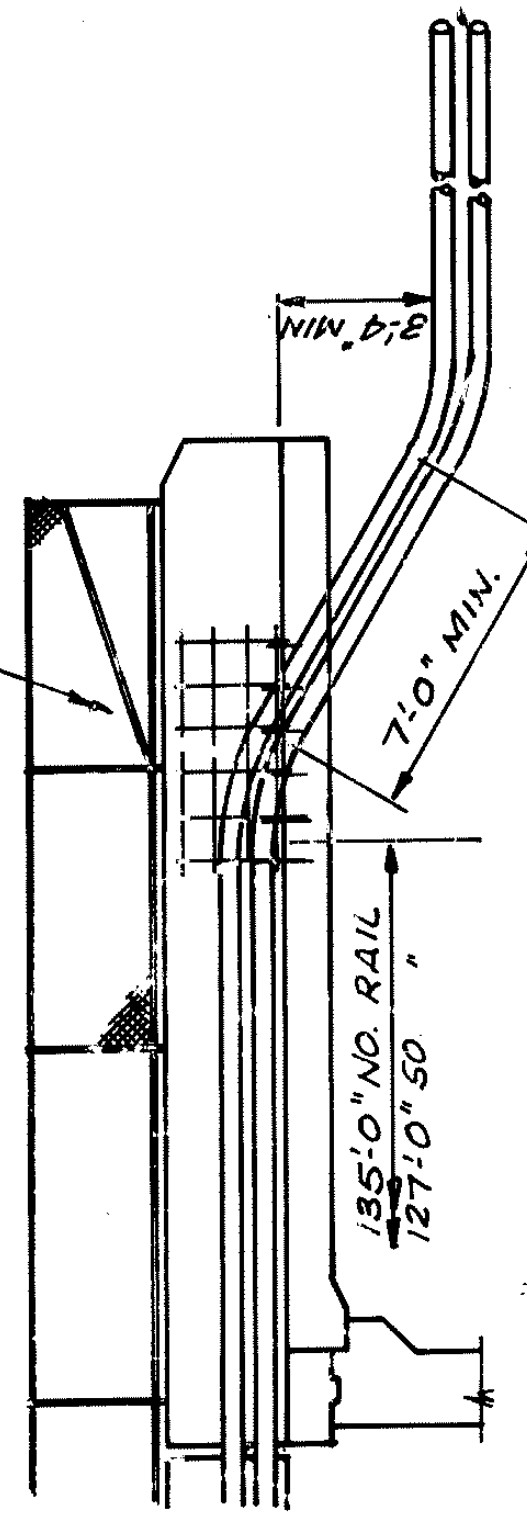


PLAN
SCALE: 1/8" = 1'-0"

P.V.C. HANGER NOTES

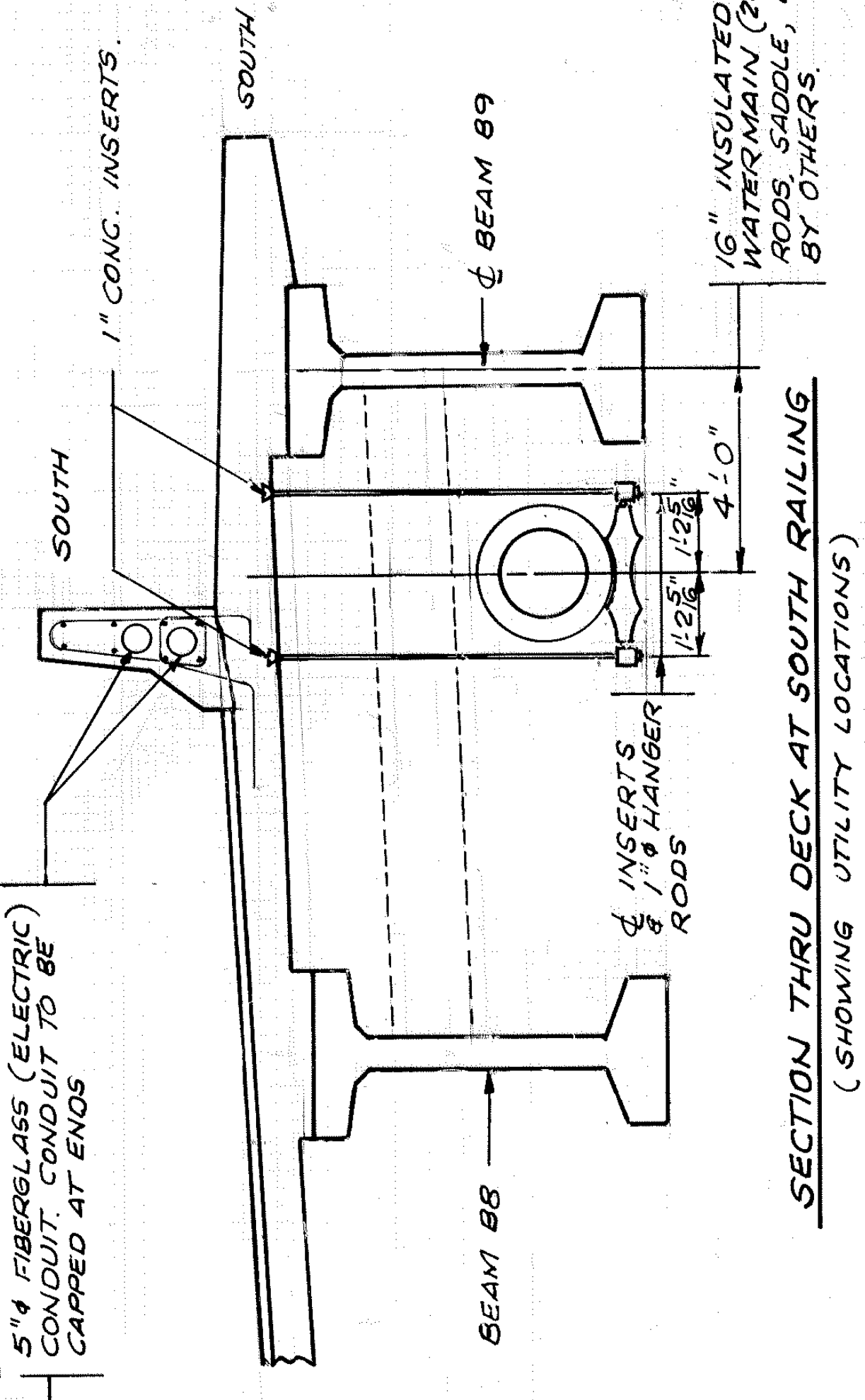
- A = 1/2" X 2" P.V.C. PLATE
- B = 2" X 2" ALUMINUM SQUARE TUBING
- C = 3/8" X 9/16" 11NC THREADED STEEL HANGER RODS, NUTS AND WASHERS (PLATED)
- D = INTERMEDIATE RODS 3/8" X 210" 11NC THREADED STEEL RODS, NUTS AND WASHERS (PLATED).
- E = 5/8" P.V.C. SPACER TUBES FOR 5" Ø CONDUIT.

CONTRACTOR SHALL CUT REINF. AS REQ'D FOR PASSAGE OF CONDUIT



SECTION A-A

SECTION THRU DECK AT NORTH RAILING
(SHOWING UTILITY LOCATIONS)



SECTION THRU DECK AT SOUTH RAILING
(SHOWING UTILITY LOCATIONS)

UTILITY DETAILS C.P. 88-09-116	DRAWN W.N.J.	CHECKED R.R.T.	APPROVED	BRIDGE NO. 02546
	SHEET 288 OF 368 SHEETS			