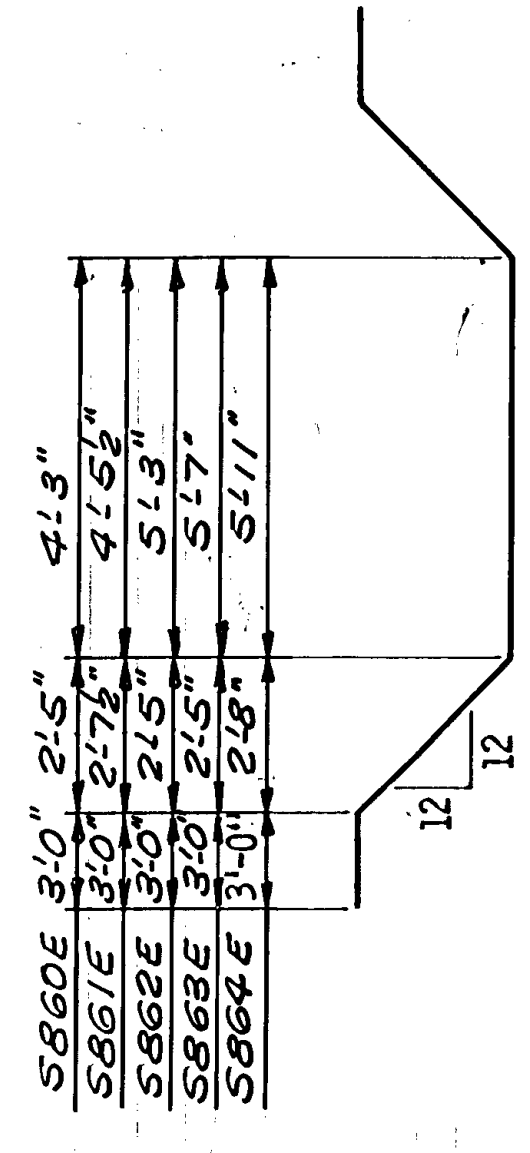


PART TRANSVERSE SECTION AT END DIAPHRAGM

LONGITUDINAL REINFORCEMENT IN BOTTOM OF DIAPHRAGM

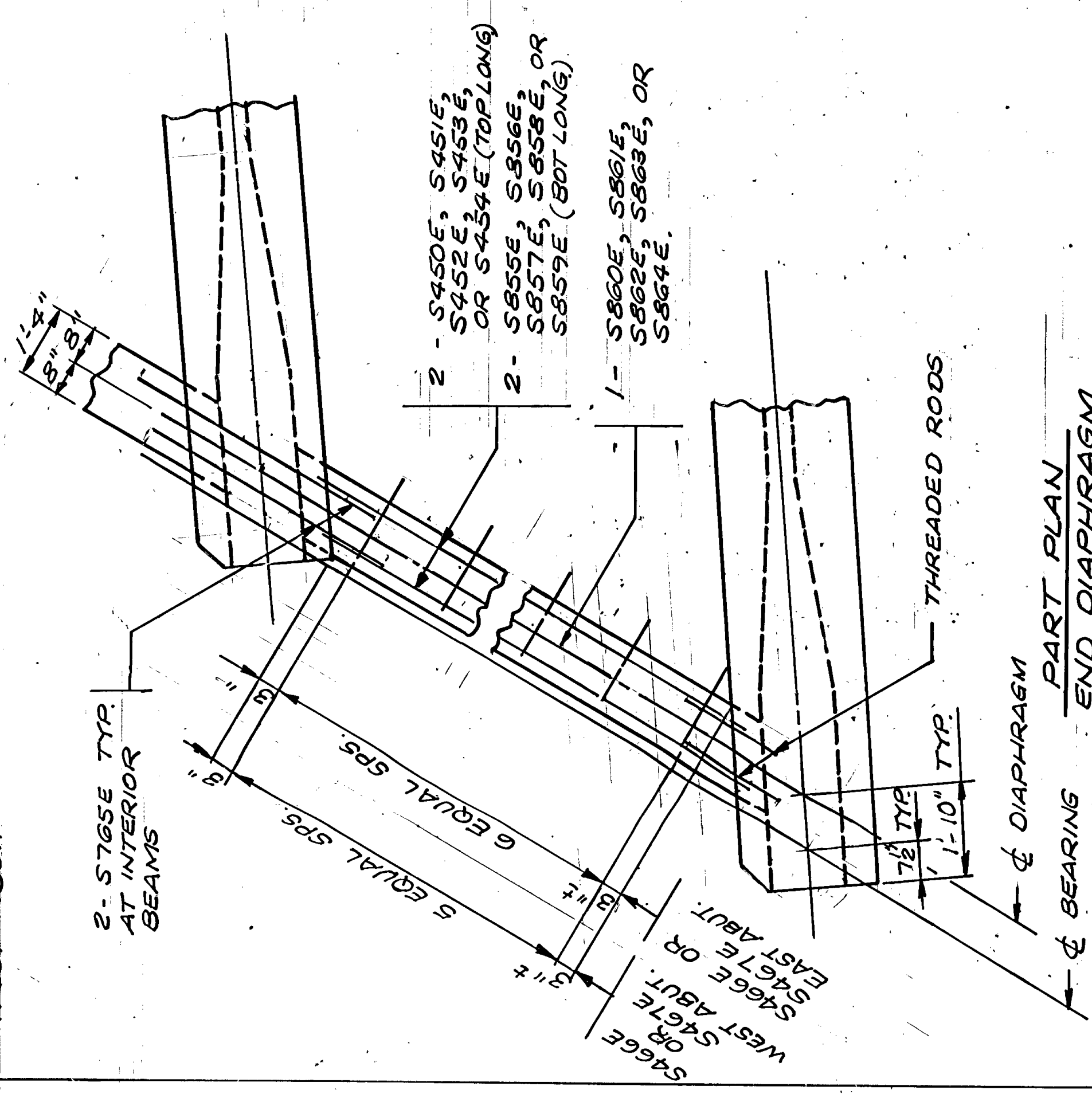
BEAM SPACING ¢ TO ¢ (1)	BARS REQUIRED	
	STRAIGHT	BENT
Up to 8'	2	6
Over 8' to 11'	2	7
Over 11' to 13'	2	8
Over 13' to 15'	2	9
Over 15' to 18'	2	11
Over 18' to 21.5'	2	11
Over 21.5' to 25'	2	11
Over 25' to 28'	2	11
Over 28' to 31'	2	11



SECTION A-A

- NOTE:
- Distance measured along ¢ of diaphragm.
 - BEAM ANCHORAGES**
Fascia beams only: four 3/4" dia. threaded rods.
Interior beams: Two 3/4" dia. threaded rods on top two No. 7 bars on bottom.
 - When construction joint is used at this location, diaphragm falterwork shall remain in place until completion of slab curing period.
 - See plans for dimensions.
 - All diaphragm bars shown are listed with the superstructure reinforcement. Diaphragm concrete and reinforcement quantities are included in superstructure quantities (except threaded rods are included in payment for prestressed beams).

- 2-S450E, 2-S855E, 1-S860E, # 6-S466E
- 2-S451E, 2-S856E, 1-S861E, # 6-S467E
- 2-S452E, 2-S857E, 1-S862E, # 7-S466E
- 2-S453E, 2-S858E, 1-S863E, # 7-S466E
- 2-S454E, 2-S859E, 1-S864E, # 7-S467E



PART PLAN END DIAPHRAGM (SIMILAR AT EAST ABUT.)

APPROVED: July 26, 1977
 Developed by: ENGINEERING STANDARDS AND BRIDGES AND STRUCTURES
 Issued by: ENGINEERING STANDARDS

STATE OF MINNESOTA
 DEPARTMENT OF TRANSPORTATION
END DIAPHRAGM
(63"-81" PRESTRESSED CONCRETE BEAM SPAN WITH PARAPET ABUTS.)

REVISION
 406, 23, 1978
B812

DETAILS
 C.R. 88-09-116

DRAWN W.N.J.
 CHECKED R.R.T.
 APPROVED
 SHEET 29.8 OF 368-SHEETS

BRIDGE NO.
02546