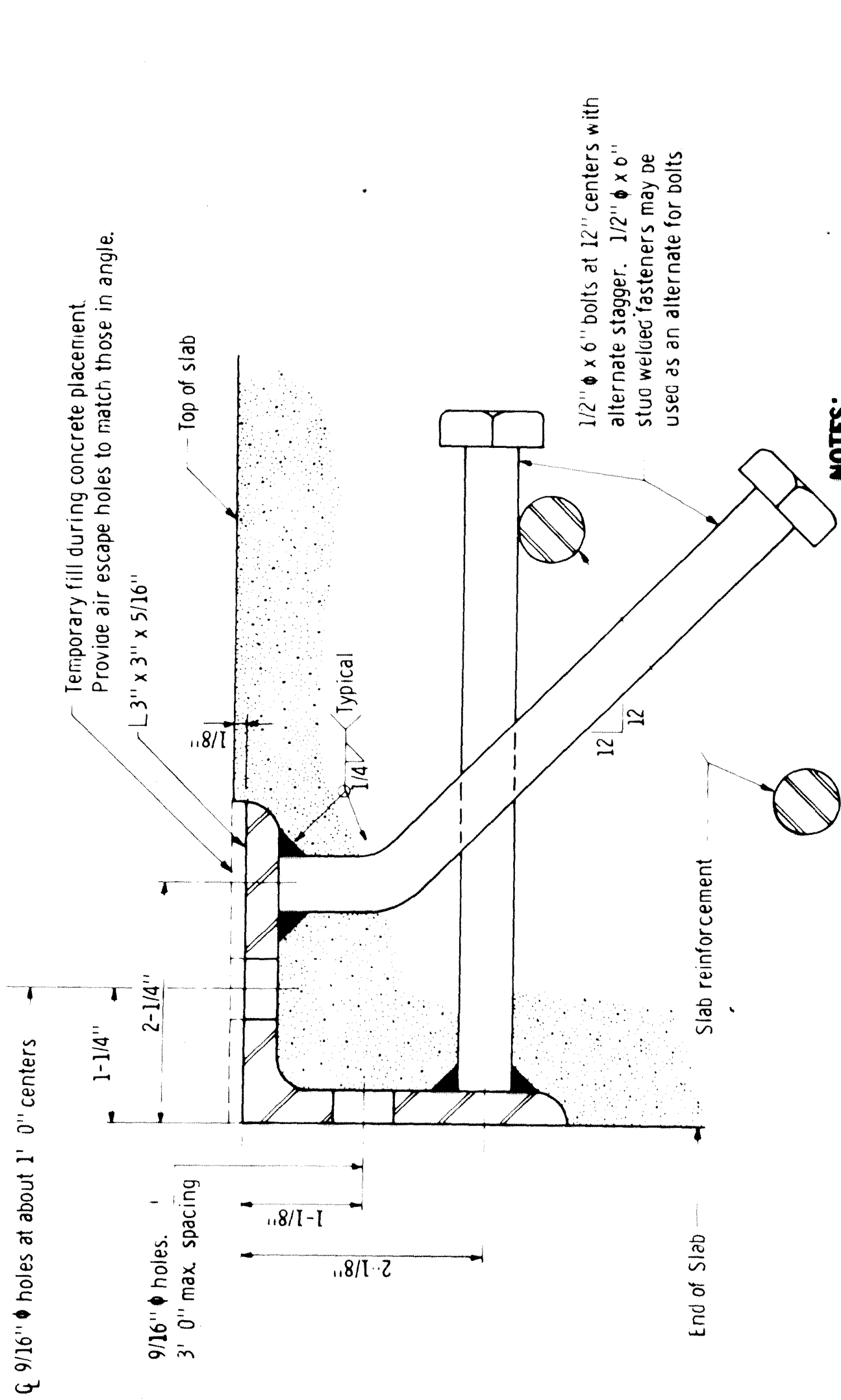


**ELEVATION**  
(Concrete not shown)

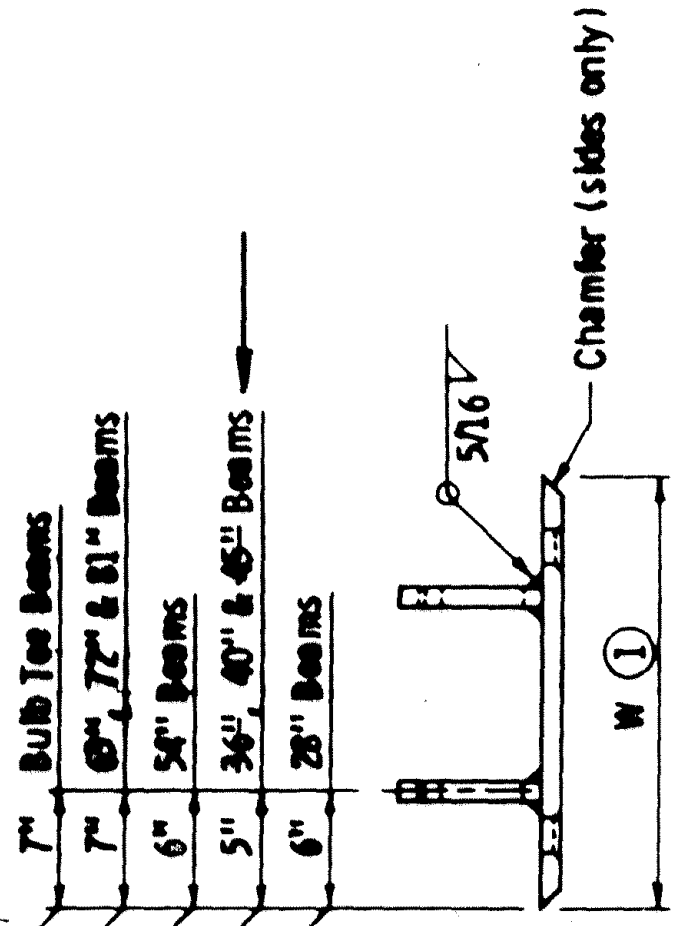


**NOTES:**

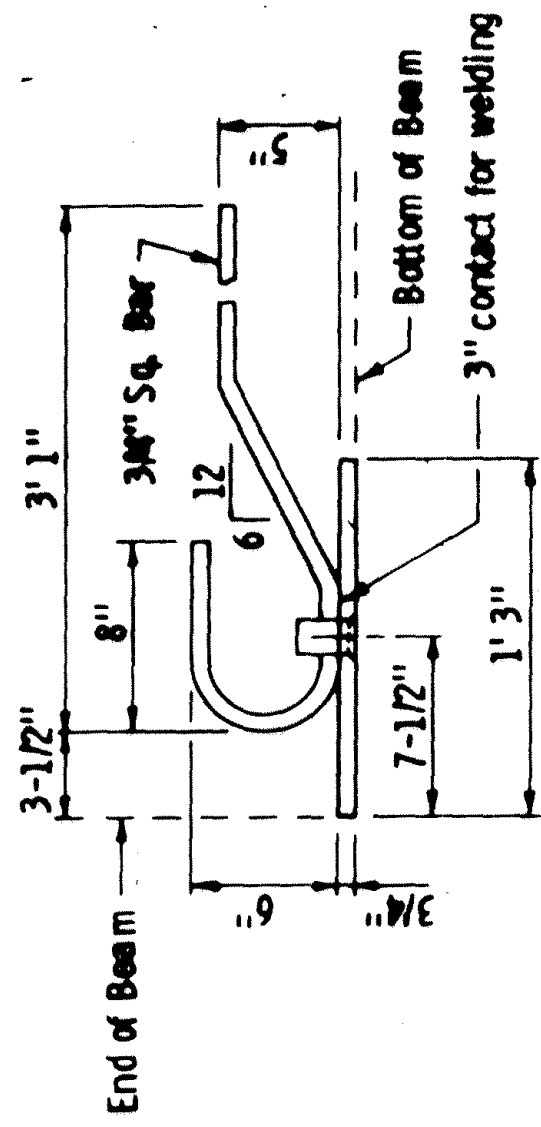
- Angles shall extend full width of roadway between curbs with a 1/2" open joint at each break in crown profile. Maximum length 22 feet.
- Angles shall be straightened to a tolerance of 1/16" in 10 feet after galvanizing
- Material: Structural steel per *Spec.* 3306, Galvanize after fabrication per *Spec.* 3394
- Set angle to proper grade and crown.
- All material will be paid for as structural steel *Spec.* 3306

**SECTION A-A**

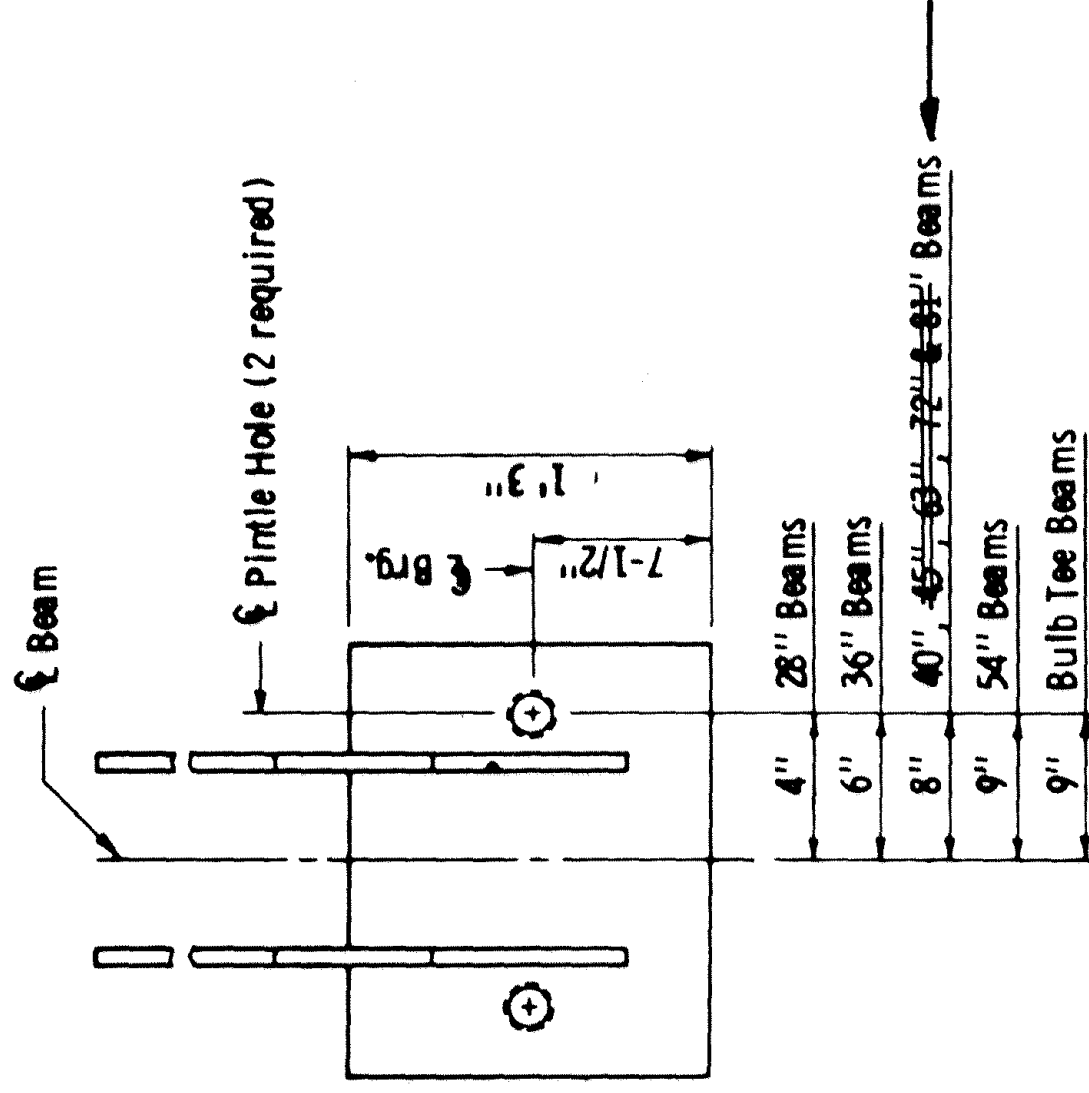
These dimensions may be modified to clear prestressed strands. However, changes must be approved by the Engineer.



**FRONT VIEW**

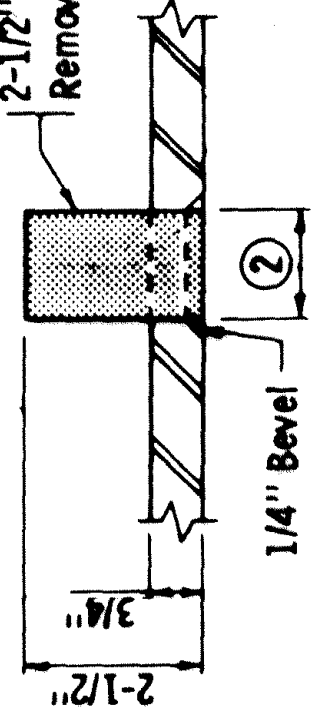


**SIDE VIEW**



**TOP VIEW**

2-1/2" long polystyrene Type B plug. Remove plug prior to beam installation.



**PINTLE HOLE DETAIL**

**NOTES:**

- Material to be structural steel per *Spec.* 3306
- Sole plate for Bearing Assembly to be hot dipped galvanized per *Spec.* 3394 after fabrication.
- Pintle holes shall be free of zinc build up from galvanizing.
- Payment for sole plates to be included in price bid for Prestressed Concrete Beams.

- ① Dimension "W" to be the width at the bottom flange of the beam minus 1/4".
  - ② 1-1/2" dia. for 1-1/4" dia. pintles. 1-3/4" dia. for 1-1/2" dia. pintles.
- Check bearing assemblies for pintle size used.

APPROVED May 26, 1972  
*Stanley D. Duff*  
Engineering Standards Engineer  
RESEARCH AND STANDARDS DIVISION

MINNESOTA DEPARTMENT OF TRANSPORTATION  
**PROTECTION ANGLE FOR END OF SLAB**

DETAIL NO. **B551**

APPROVED: October 11, 1982  
Developed by: ENGINEERING STANDARDS & BRIDGES AND STRUCTURES OFFICE  
Issued by: OFFICE OF ENGINEERING STANDARDS

STATE OF MINNESOTA  
DEPARTMENT OF TRANSPORTATION  
**SOLE PLATE PRESTRESSED CONCRETE BEAMS (FOR BEARINGS WITH PINTLES)**

REVISION  
DETAIL NO. **B303**