

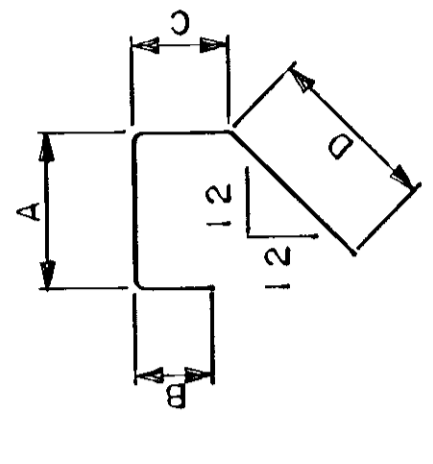
BAR LIST FOR SUPERSTRUCTURE

BAR NO.	LENGTH	SUM OF QUANTITIES	DIMENSIONS				LOCATION	
			A	B	C	D		
B701E	146	24'-0"	STR.				LONGITUDINAL	
B502E	64	30'-5"	STR.				TRANSVERSE	
T403E	60	24'-0"	STR.				LONGITUDINAL	
T404E	50	30'-7"	STR.				TRANSVERSE	
B505E	120	6'-7"	125	1'-6"	1'-11"	1'-3"	1'-11"	LONGITUDINAL

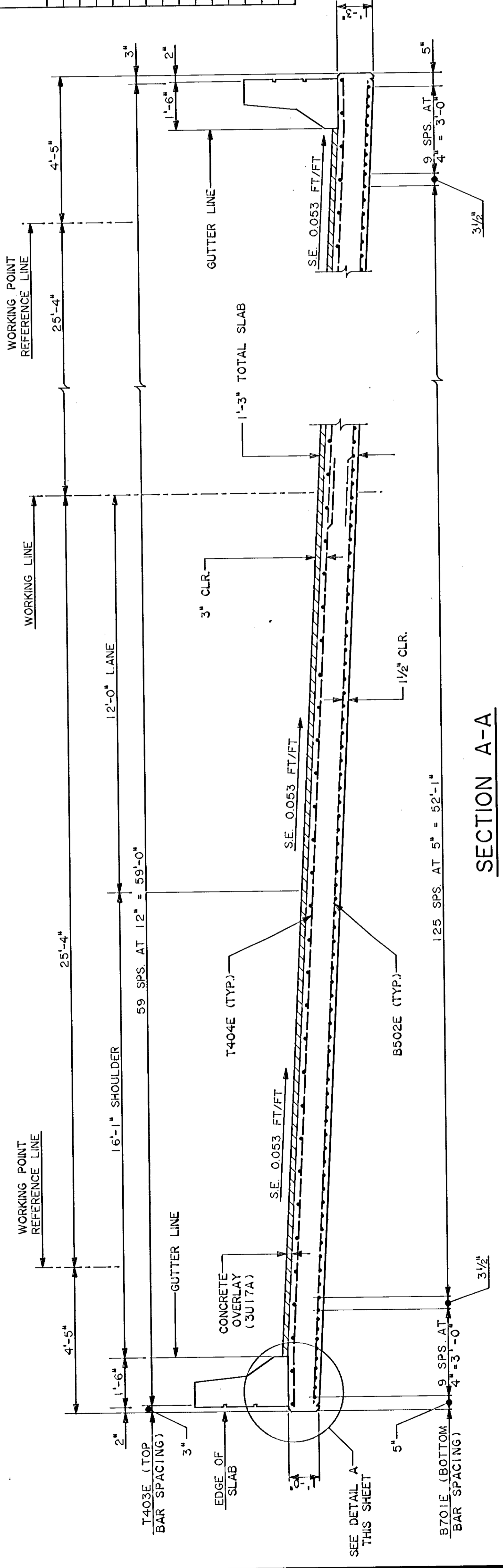
SUMMARY OF QUANTITIES FOR ENTIRE SUPERSTRUCTURE

① STRUCTURE CONCRETE (3X36)	64	CU. YD.
② TYPE J RAILING CONCRETE (3X46)	49	LIN. FT.
③ REINFORCEMENT BARS (EPOXY COATED)	13120	POUND
④ CONCRETE OVERLAY (3U17A)	1367	SQ. FT.
⑤ 3-PLY JOINT WATERPROOFING	120	LIN. FT.
⑥ BRIDGE NAME PLATE	1	UNIT
⑦ STRUCTURAL STEEL (3306)	730	POUND

- ① THE VOLUME OF DECK CONCRETE MIX NO. 3X36 WAS COMPUTED USING THE NOMINAL POUR THICKNESS DIMENSION FOR USE WITH A LOW SLUMP CONCRETE OVERLAY.
- ② TYPE J RAILING CONCRETE 3X46 VOLUME IS APPROXIMATELY 5.3 CU. YDS.
- ③ INCLUDES RAILING REINFORCEMENT.
- ④ CONCRETE WEARING COURSE (3U17A) VOLUME IS APPROXIMATELY 8.4 CU. YDS.
- ⑤ INCLUDED IN PRICE BID FOR OTHER ITEMS.
- ⑥ FOR PROTECTION ANGLE



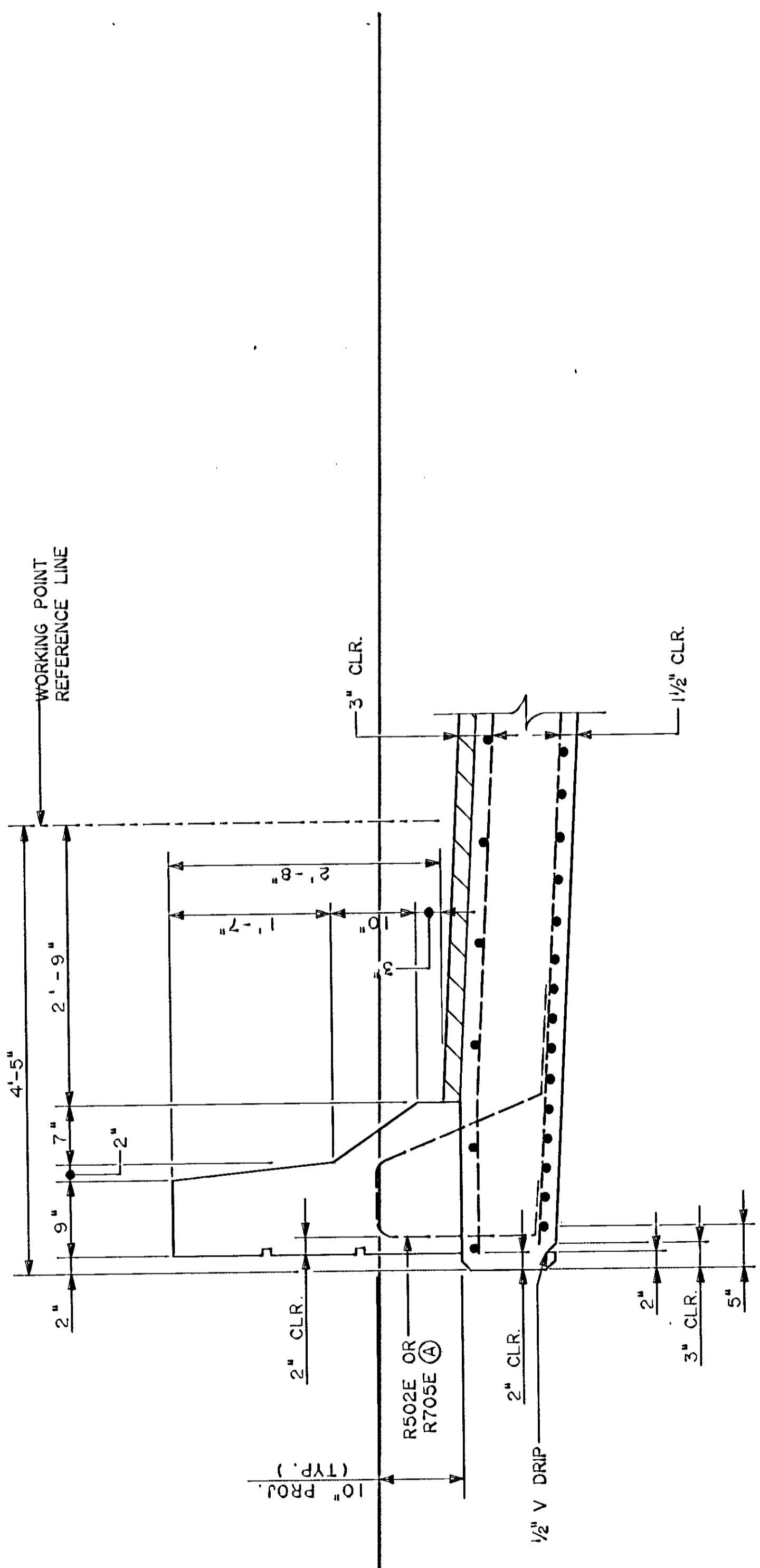
125



SECTION A-A

FROM SH. 6

SCALE 0 1 2 FT



DETAIL A

SCALE 0 1 FT

JOINT FILLER SUMMARY ⑤

TYPE	NO.	SIZE	LOCATION
CORK	4	1"x2'-2"x2'-0"	ABUTMENT WINGWALL (TRIM)
BIT. FELT	2	1/2"x9"x59'-6"	ABUTMENT SHEAR BLOCK
CORK	4	1"x4"x59'-6"	ABUTMENT SEAT

NOTES:

- ① SEE CONCRETE RAILING (TYPE J) DETAILS AND BAR LIST ON SHEET NO. 8.