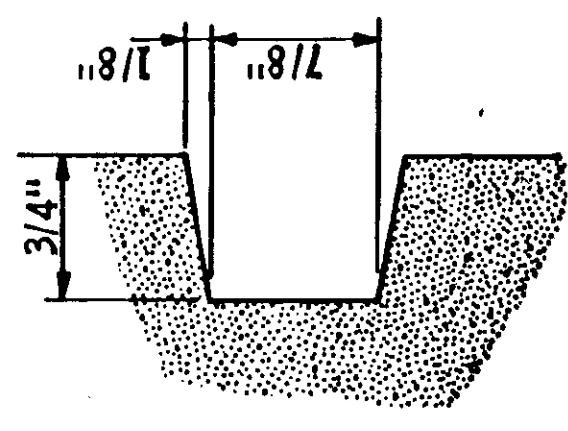


**SECTION A-A**

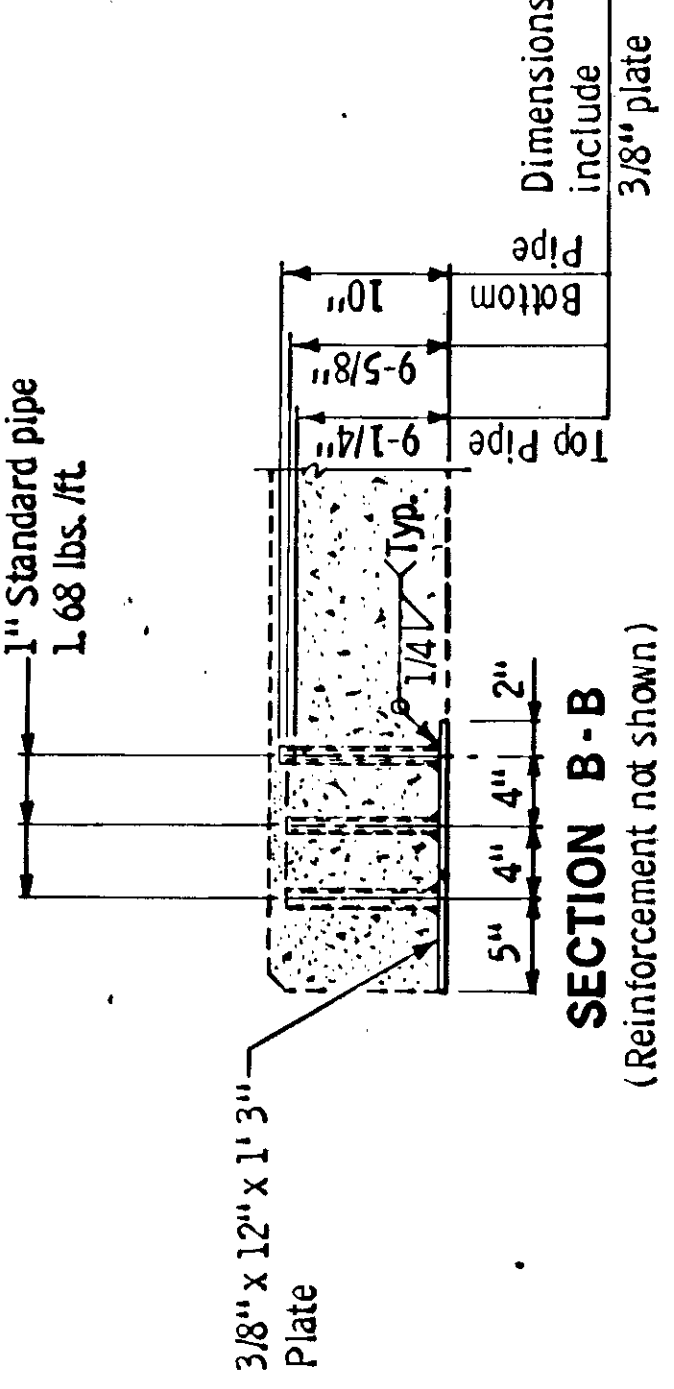
**BILL OF REINFORCEMENT FOR RAILING**

BAR NO.	LENGTH	SHAPE	LOCATION
R501E	56	6' 6"	Bent
R502E	44	6' 0"	Bent
R703E	4	6' 6"	Bent
R703E	12	6' 0"	Bent
R407E	16	24' 0"	Str't
R502E			End Post
R703E			End Post
R407E			Str't
R502E			End Post
R703E			End Post
R407E			Str't

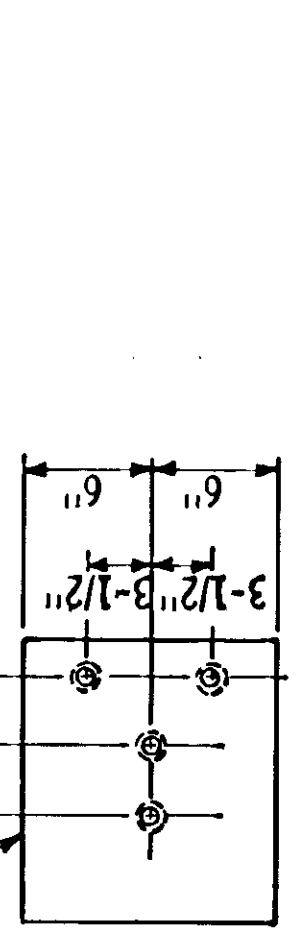
**INSIDE ELEVATION OF RAILING**  
(WEARING COURSE NOT SHOWN)



**RAIL RUSTICATION**

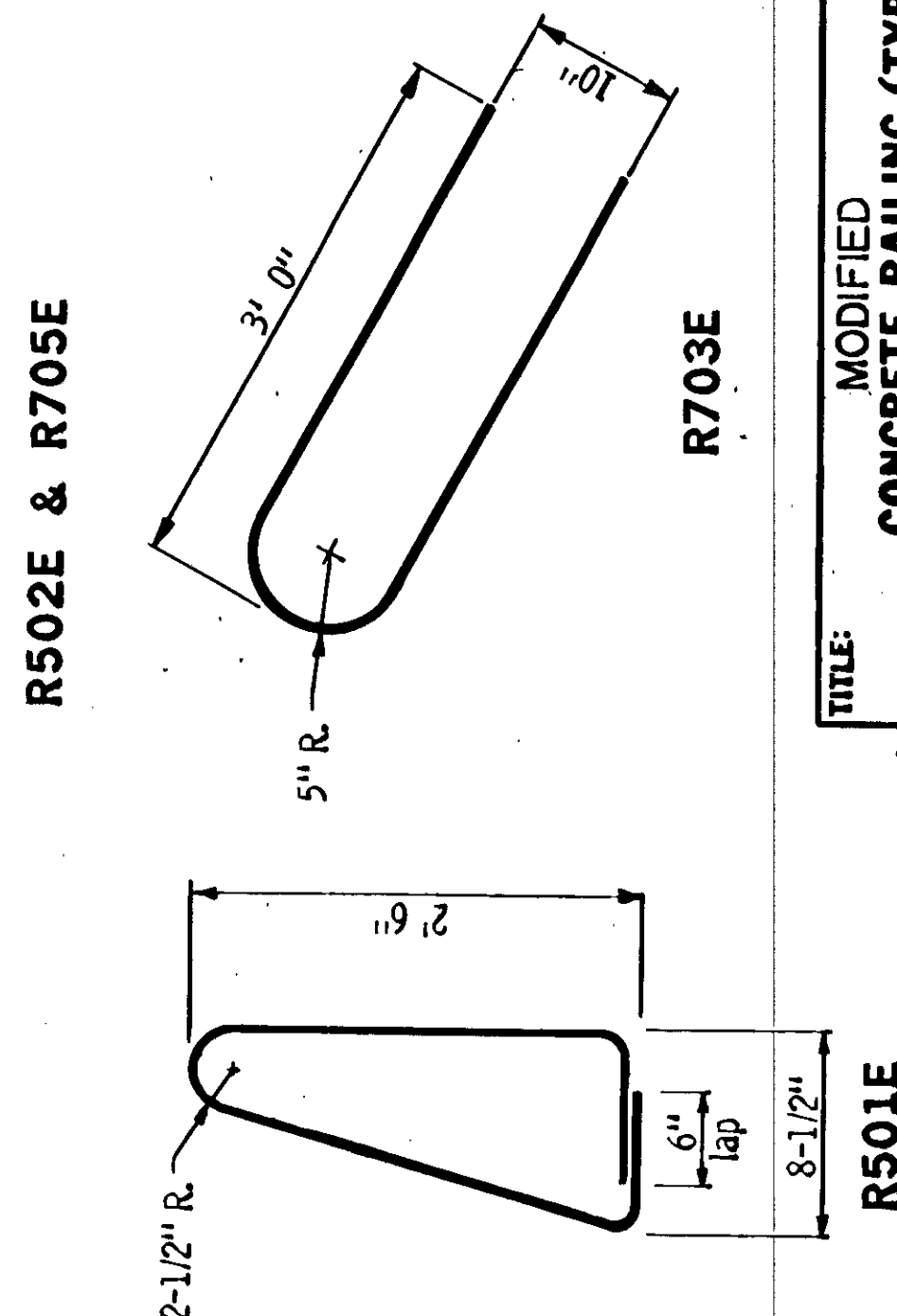
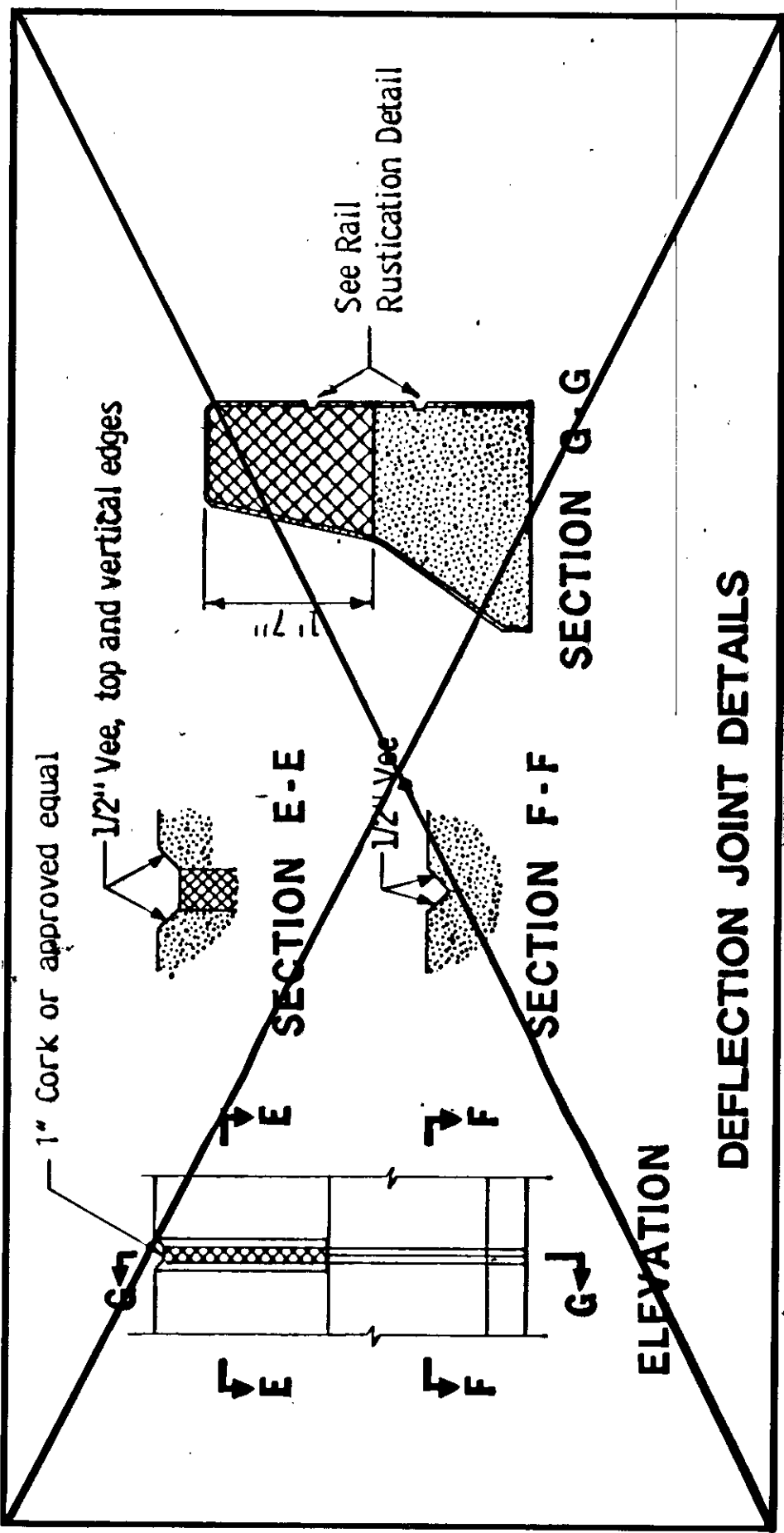


**VIEW C-C**



**GUARDRAIL CONNECTION DETAIL**

Galvanize after fabrication per Spec. 3394  
Estimated weight = 24 lbs.



**GENERAL NOTES:**

- Bars marked with the suffix "E" shall be epoxy coated in accordance with Spec. 3301
- Conc. Railing = 440 lbs./ft.
- Conc. Railing = .109 cu. yds./ft.
- Rail and end post to be Concrete Mix No. 3X46
- Guardrail connection shall be Structural Steel, Spec. 3306
- Finish all edges of rail and end post with 1/2" vee except where otherwise noted.

See superstructure sheets for joint spacings

Maximum spacing of concrete deflection joints shall be 20'-0"

Guardrail connection to be included in price bid for other items.

Rail quantities are included in summary of quantities for superstructure.

Length of railing concrete to be measured for payment between outside faces of railing.