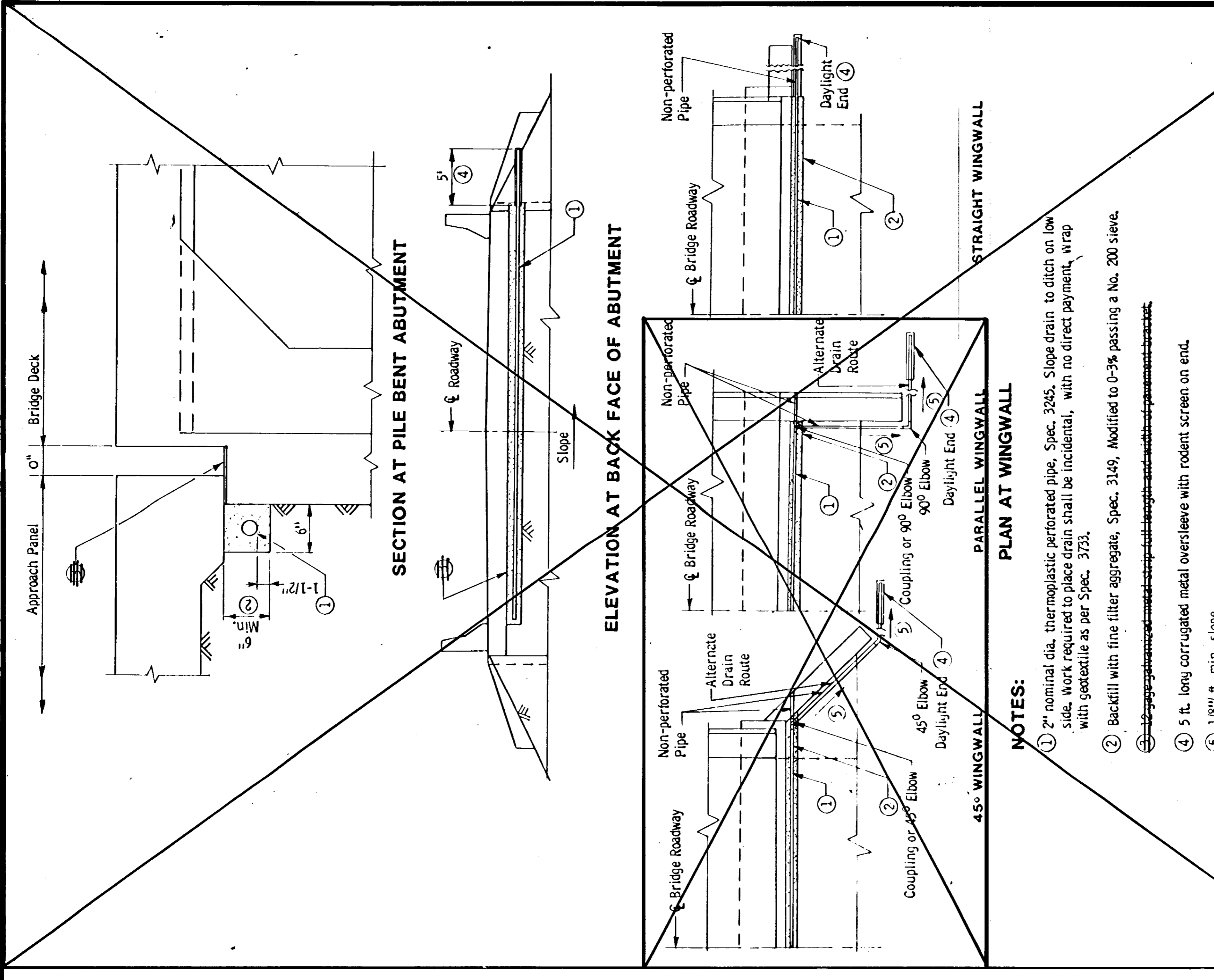


NOTES:
 Angles shall extend full width of roadway between curbs with a 1/2" open joint at each lane edge. Maximum length 22 feet.
 Angles shall be straightened to a tolerance of 1/16" in 10 feet after galvanizing.
 Material: Structural steel per M. H. C. 330b. Galvanize after fabrication per M. H. C. 3394.
 Set angle to proper grade and crown.
 All material will be paid for as structural steel M. H. C. 330b

APPROVED: July 26, 1972
Director of Research
 Engineering Standards Engineer
 RESEARCH AND STANDARDS DIVISION

MINNESOTA
 DEPARTMENT OF TRANSPORTATION
PROTECTION ANGLE FOR END OF SLAB

DETAIL NO. **B551**



NOTES:
 ① 2" nominal dia. thermoplastic perforated pipe, Spec. 3245. Slope drain to ditch on low side. Work required to place drain shall be incidental, with no direct payment, wrap with geotextile as per Spec. 3733.
 ② Backfill with fine filter aggregate, Spec. 3149, Modified to 0-3% passing a No. 200 sieve.
 ③ 12 gauge galvanized metal strip full length and width of pavement bracket.
 ④ 5 ft. long corrugated metal oversleeve with rodent screen on end.
 ⑤ 1/8" ft. min. slope

APPROVED: November 10, 1983
 DEVELOPED BY: ENGINEERING STANDARDS & BRIDGES AND STRUCTURES OFFICES
 ISSUED BY: OFFICE OF ENGINEERING STANDARDS

STATE OF MINNESOTA
 DEPARTMENT OF TRANSPORTATION
DRAIN AT PILE BENT ABUTMENTS (BRIDGE REPAIR AND NO APPROACH TREATMENT)

REVISION: Jan. 18, 1984
 DETAIL NO. **B911**