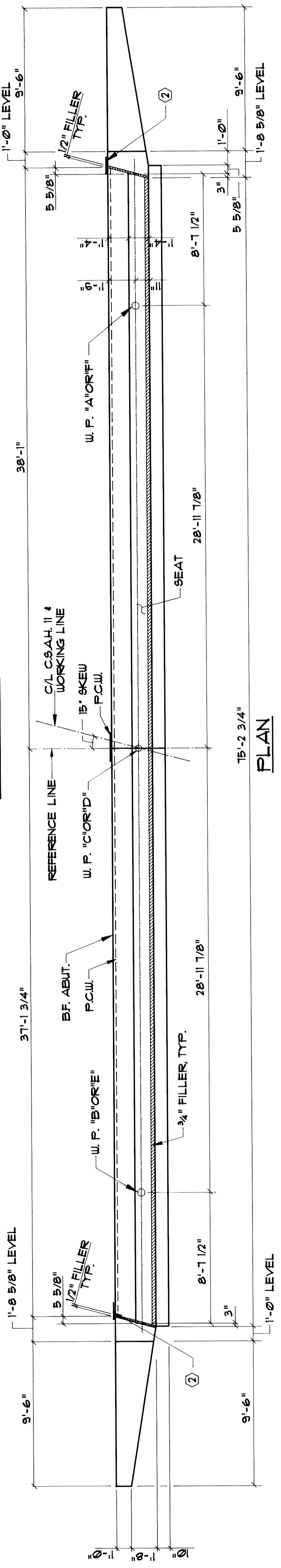
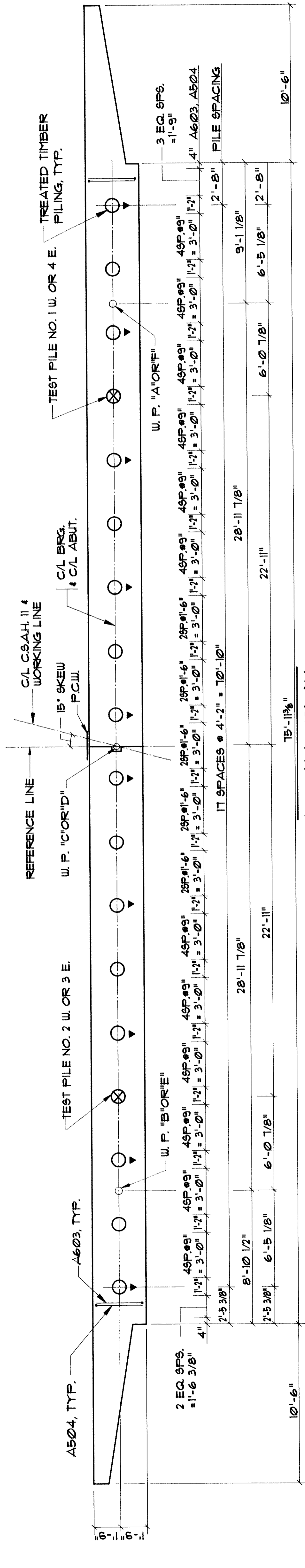


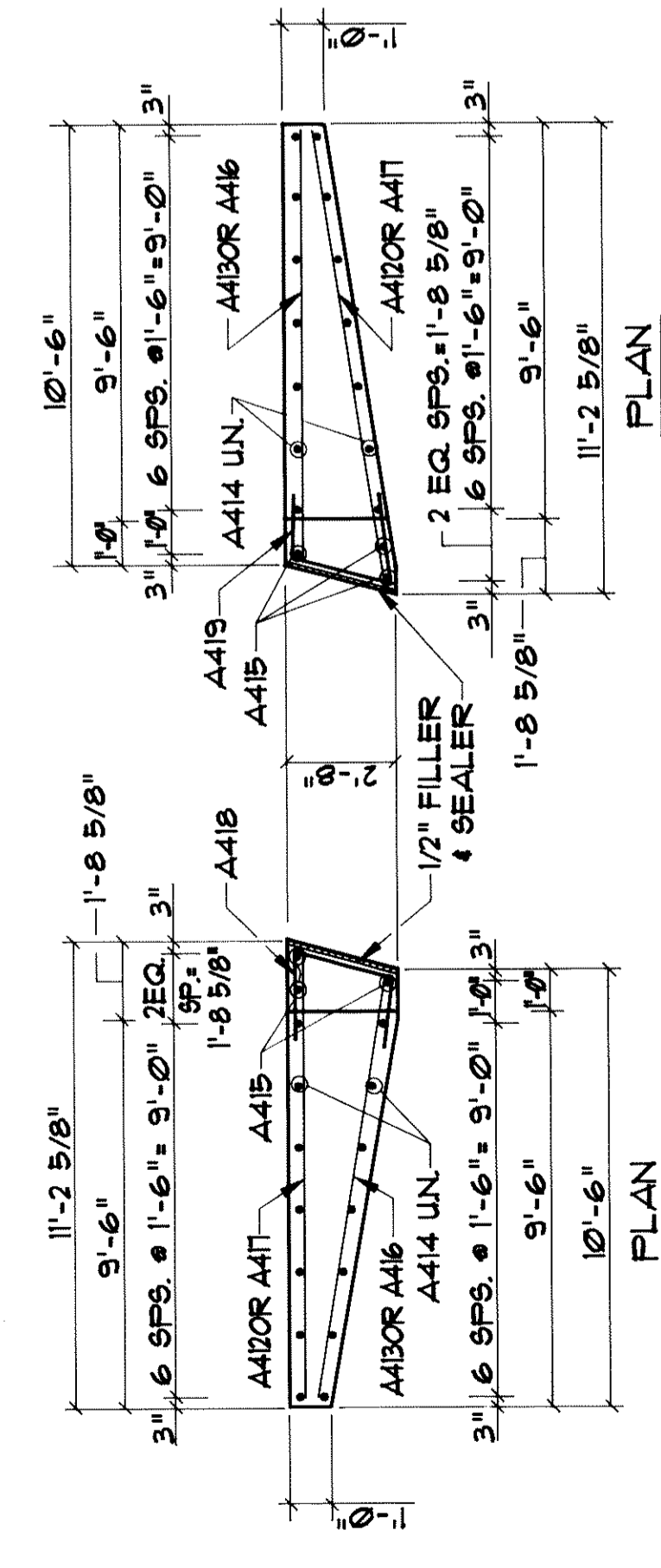
ELEVATION



PLAN



FOOTING PLAN



NOTES:

- ① SEE SHEET 4 FOR ABUTMENT BAR LIST & SUMMARY OF QUANTITIES FOR ABUTMENTS.
- ② ALL REINFORCEMENT TO BE PLACED 2" CLEAR UNLESS OTHERWISE SHOWN OR NOTED.
- ③ FF. = FRONT FACE
BF. = BACK FACE
- ④ SEE SHEET 4.
- ① SEAL ALL EXPOSED HORIZONTAL AND VERTICAL SURFACES OF FILLER WITH NON-STAINING GRAY NON-BITUMINOUS JOINT SEALER (1" DEEP AND HOLD 1/8" BELOW SURFACE OF CONCRETE.
- ② VERTICAL POLYVINYL CHLORIDE WATERSTOP TO EXTEND FROM BRIDGE SEAT TO TOP OF WING. SPLICE AT JUNCTION WITH HORIZ WATERSTOP. P.C.W. SHALL BE BUTT-SPLICED AT ALL INTERSECTIONS BY USING A SPLICING IRON.

PILE NOTES:

- ALL TIMBER PILING TO MEET REQUIREMENTS OF MNDOT SPEC. 347I.
- ALL TIMBER PILING TO BE PRESSURE TREATED PER 343I.
- PILE SPACING SHOWN IS AT BOTTOM OF FOOTING.
- PILES MARKED TO BE BATTERED 3" PER FOOT IN THE DIRECTION SHOWN.
- 4 TREATED TIMBER TEST PILES, 60 FEET LONG. 32 PILES ESTIMATED LENGTH 55 FEET LONG. 36 PILES REQUIRED FOR 2 ABUTMENTS.

COMPUTED PILE LOADS

	TONS PER PILE
DEAD LOAD	23.8
LIVE LOAD	6.2
DESIGN LOAD	30.0

* 30.0 = REDUCTION PER A.A.S.H.T.O. 3. 22
1.0 GROUP I LOADING