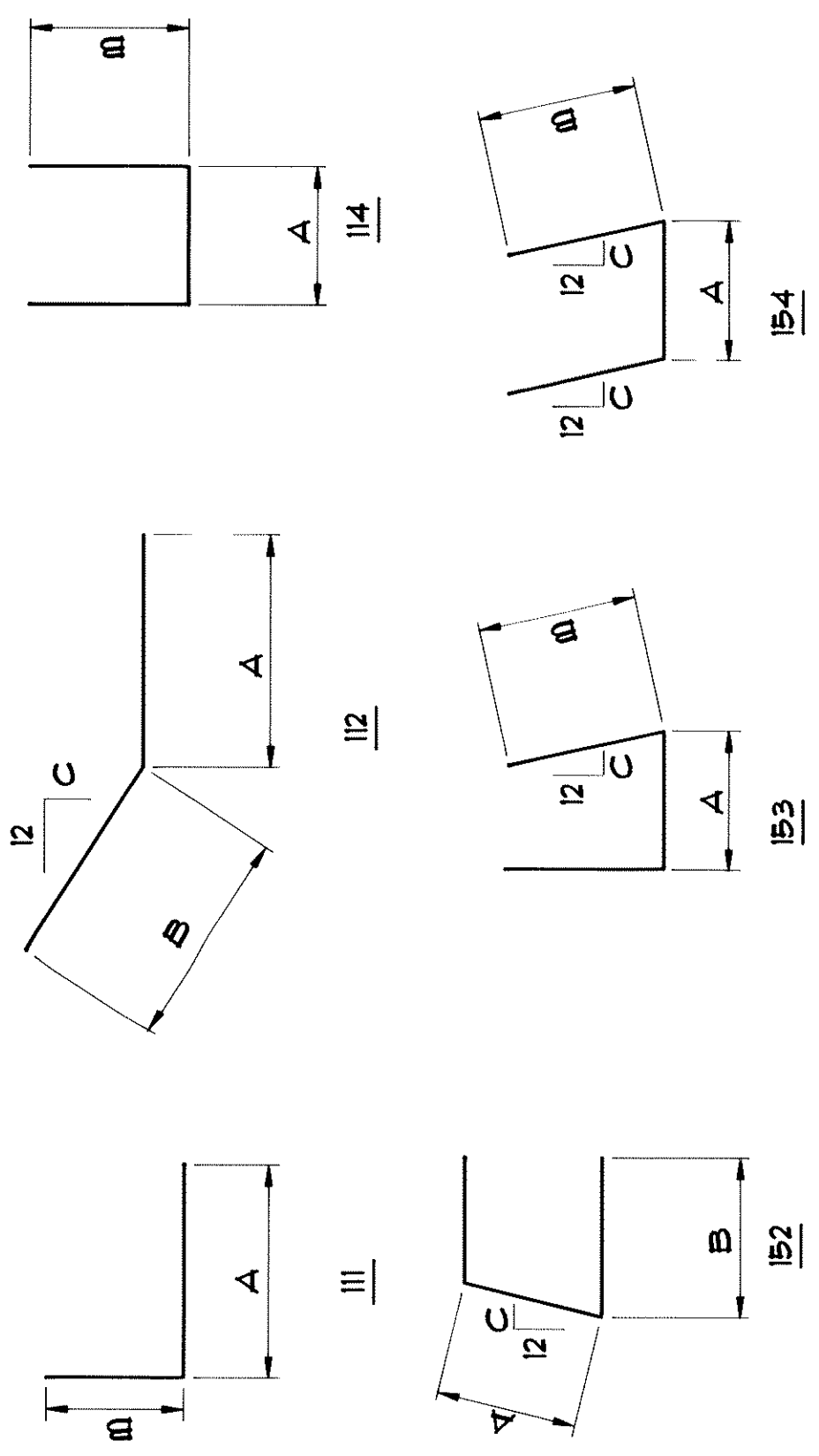


BAR MARK	LENGTH	DIMENSION				LOCATION
		A	B	C	D	
ABUTMENTS						
EPOXY COATED						
A603	164	11'-2"	152	2'-3"	1 1/4	BODY STIRRUPS
A504	164	11'-9"	114	2'-3"		BODY STIRRUPS
A605	46	41'-6"	114	1'-6"		BODY LONGIT
A606	46	39'-2"	114	1'-6"		BODY LONGIT
A407	152	4'-8"	114	1'-10"		BODY SEAT
A508	152	1'-3"	114	2'-6"		BODY SEAT
A409	4	39'-10"	STR			BODY SEAT
A410	4	31'-4"	STR			BODY SEAT
A611	12	12'-1"	STR			WINGS HORIZ
A412	4	4'-8"	STR			WINGS HORIZ
A413	4	4'-4"	STR			WINGS HORIZ
A414	8	1'-4"	STR			WINGS VERT
A415	12	11'-4"	STR			WINGS VERT
A416	4	11'-0"	112	10'-2"	5 1/4	WINGS TOP
A417	4	11'-8"	112	10'-2"	5 1/4	WINGS TOP
A418	4	5'-3"	153	2'-5"	3	WINGS
A419	4	5'-9"	154	2'-5"	4 3/4	WINGS

BAR BENDING DIAGRAMS



* BAR TYPE USES STANDARD STIRRUP & TIE HOOKS.

NOTE:
BENT BAR DIMENSIONS GIVEN ARE OUT-TO-OUT. ACTUAL BAR LENGTHS SHALL BE DETERMINED BASED ON DIMENSIONS SHOWN IN THE BAR BENDING DIAGRAMS. TOTAL BAR LENGTHS SHOWN ARE FOR USE IN COMPUTING REINFORCEMENT BAR WEIGHTS FOR PAYMENT ONLY.

PREFORMED JOINT FILLER LIST

TYPE	NO.	SIZE	LOCATION
CORK	4	1" x 12" x 2'-5"	RAIL DEFLECTION JTS.
BIT. FELT	2	3/4" x 4" x 15'-3"	ABUT. SEATS
CORK	4	1/2" x 2'-9" x 2'-11"	AT WINGS
P.C.W.	2	9" x 9'-0"	ABUT. JOINTS

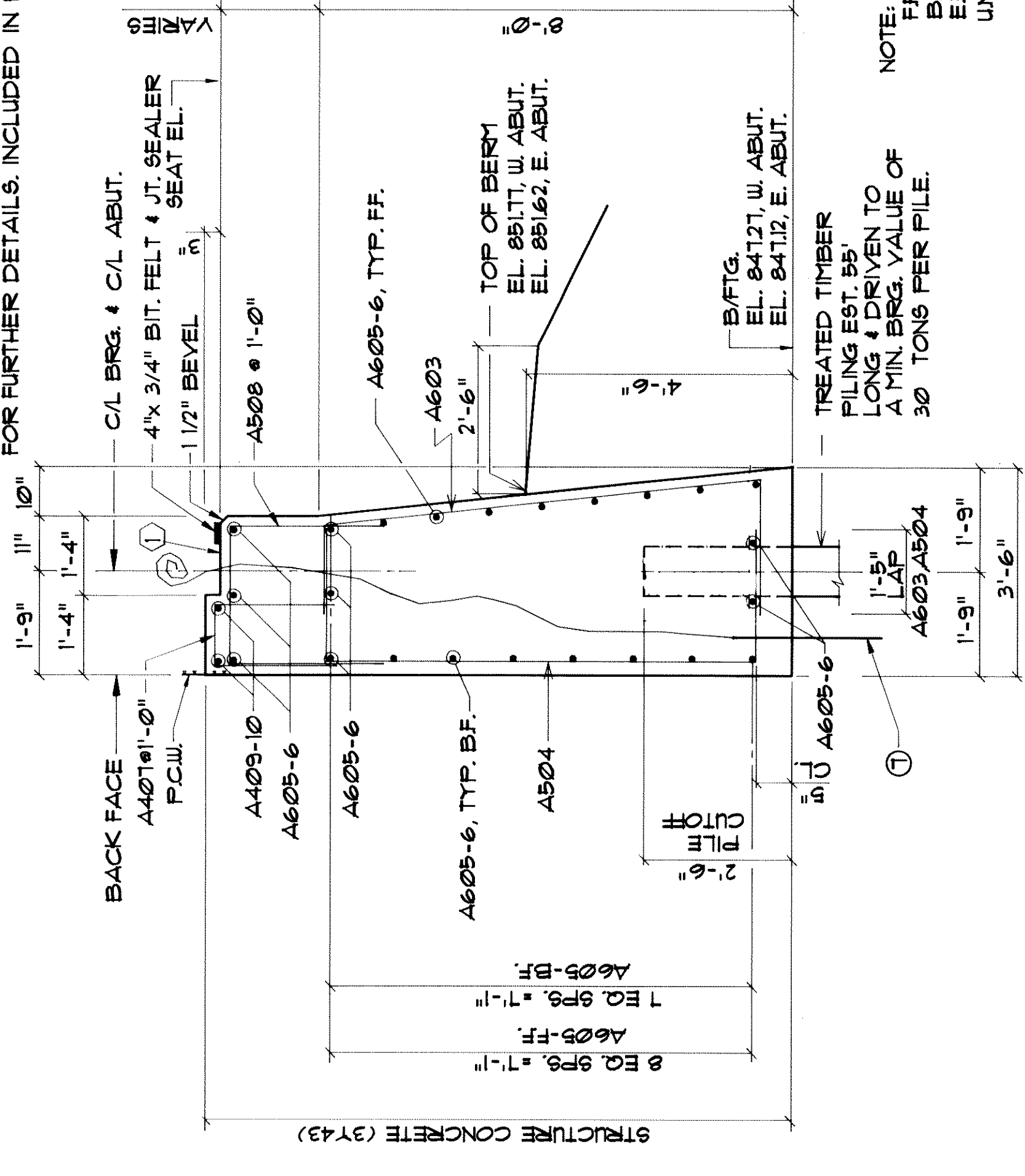
SUMMARY OF QUANTITIES *

ITEM	UNIT	QUANTITY
STRUCTURE CONCRETE (3Y43)	C.Y.	186
REINFORCEMENT BARS (EPOXY COATED)	FOUND	57990
TREATED TIMBER PILING DELIVERED	LIN. FT.	1160
TREATED TIMBER PILING DRIVEN	LIN. FT.	1160
TREATED TIMBER TEST PILES, 60' LONG	EACH	4
BENCH MARK DISK	EACH	1
PREFORMED JOINT FILLER		

- ④
- ④
- ⑤
- ③ ② ①

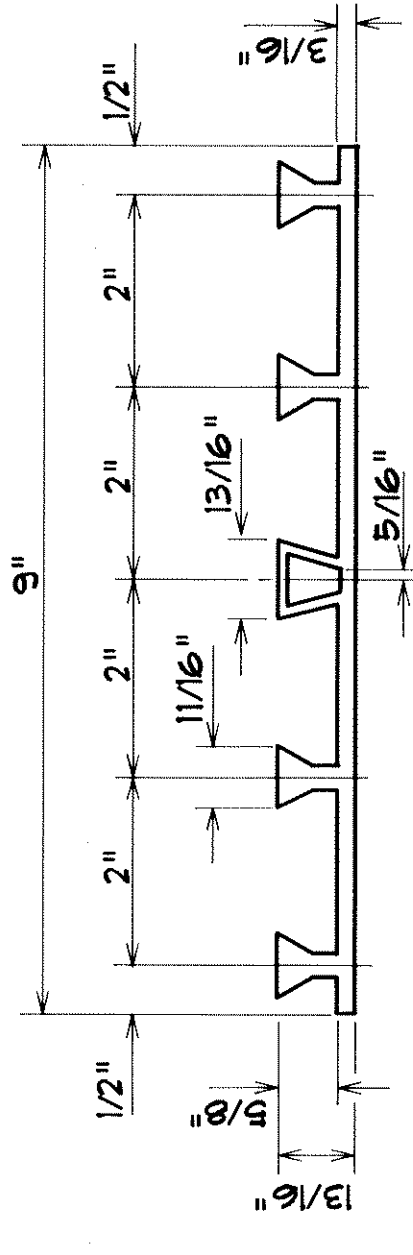
- ① INCLUDED IN PRICE BID FOR OTHER ITEMS.
- ② SEE SPECIAL PROVISIONS.
- ③ SEE LIST.
- ④ DOES NOT INCLUDE TEST PILES.
- ⑤ COUNTY WILL FURNISH DISK PAYMENT FOR PLACEMENT TO BE INCLUDED IN PRICE BID FOR OTHER ITEMS. SEE STANDARD PLATE NO. 9301 FOR PLACING.
- ⑥ TABLE IS FOR CONTRACTORS CONVENIENCE ONLY. CUT TO FIT.
- ⑦ ORNAMENTAL METAL RAILING SHALL BE ELECTRICALLY GROUNDED AS FOLLOWS: A COPPER COATED STEEL ROD HAVING A NOMINAL DIAMETER OF 5/8" OR MORE AND A MINIMUM LENGTH OF 8 FEET SHALL BE INSTALLED AT THE LOCATION SHOWN. THE TOP OF GROUND ROD SHALL PROJECT APPROX. ONE FOOT INTO FOOTING. ATTACH RAIL ANCHORAGE TO GROUNDING ROD WITH A SOLID NO. 6 GAGE COPPER WIRE WITH APPROVED TYPE METAL CLAMPS. SEE SHEET 8 & 9 FOR FURTHER DETAILS. INCLUDED IN PRICE BID FOR OTHER ITEMS.

* TWO ABUTMENTS



TYPICAL SECTION THRU BODY

- ① STEEL TROUPEL TOP SURFACE OF ABUTMENT. PLACE MULTIPLE LAYERS OF POLYETHYLENE SHEETS OVER ENTIRE ABUTMENT TOP BEFORE PLACING SUPERSTRUCTURE. TOTAL THICKNESS OF SHEETS SHALL BE AT LEAST 0.03"



POLYVINYL CHLORIDE WATERSTOP (P.C.W.)