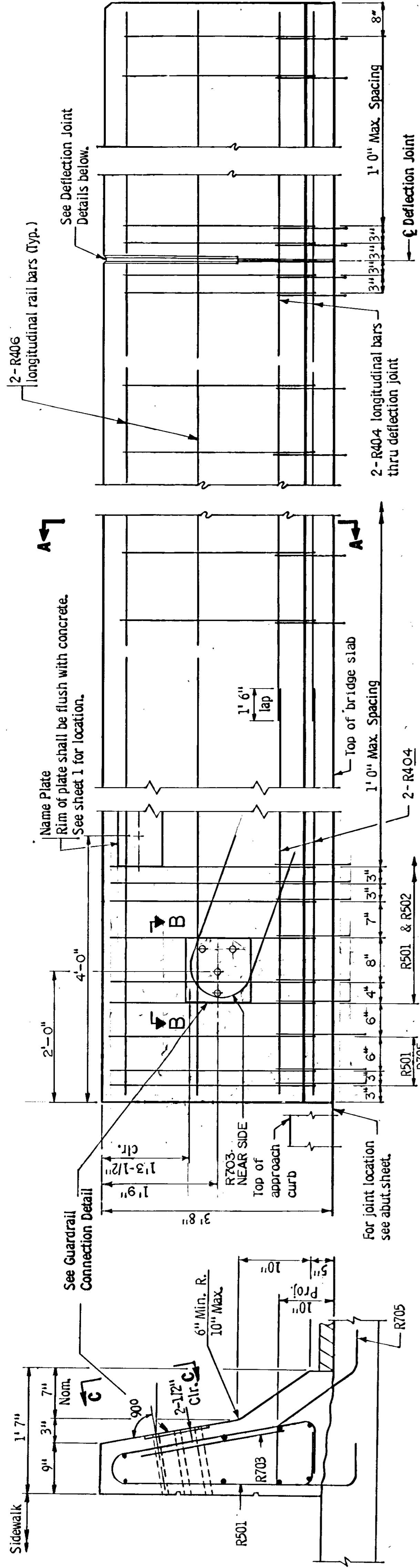


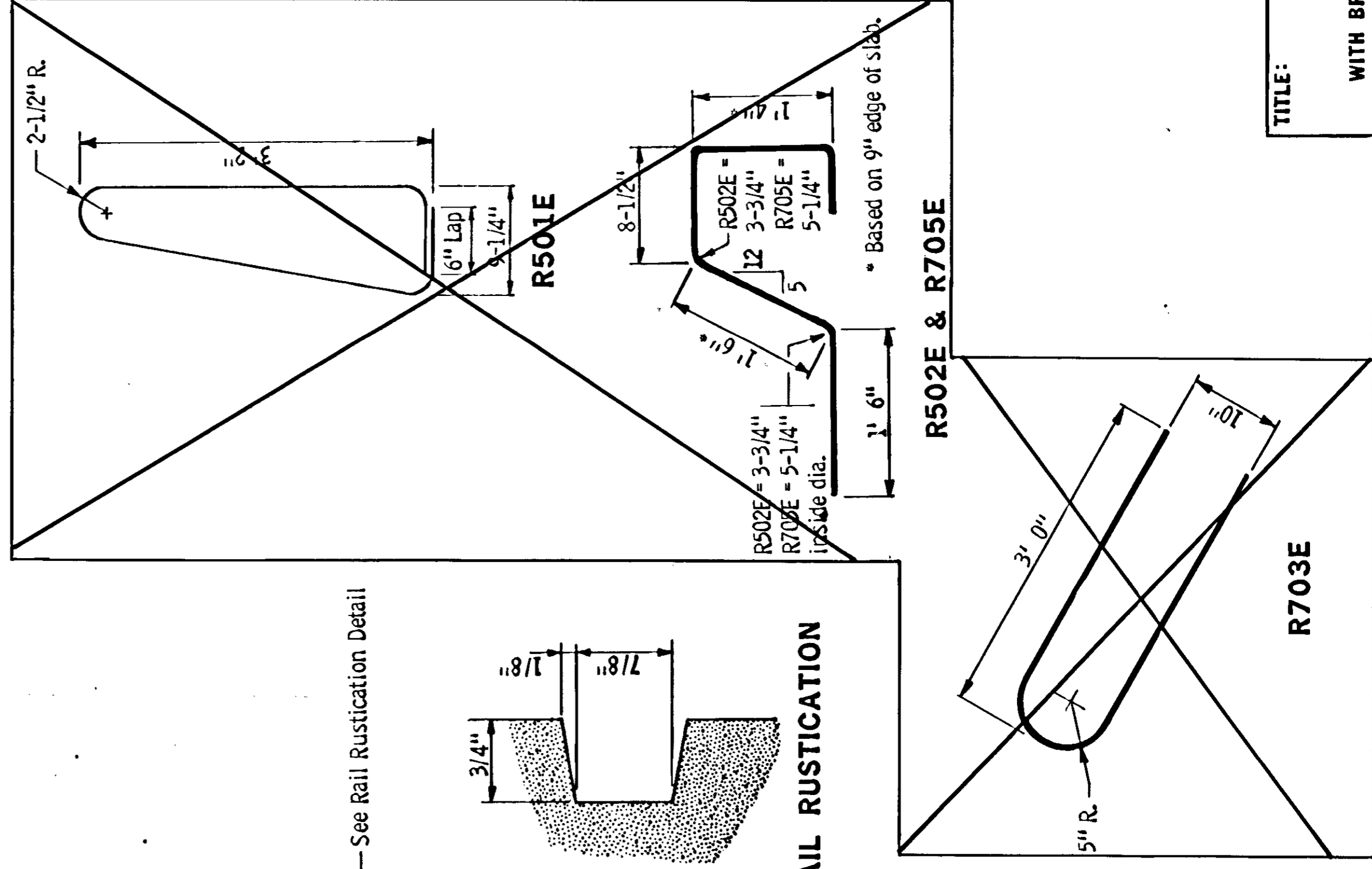
SECTION A-A



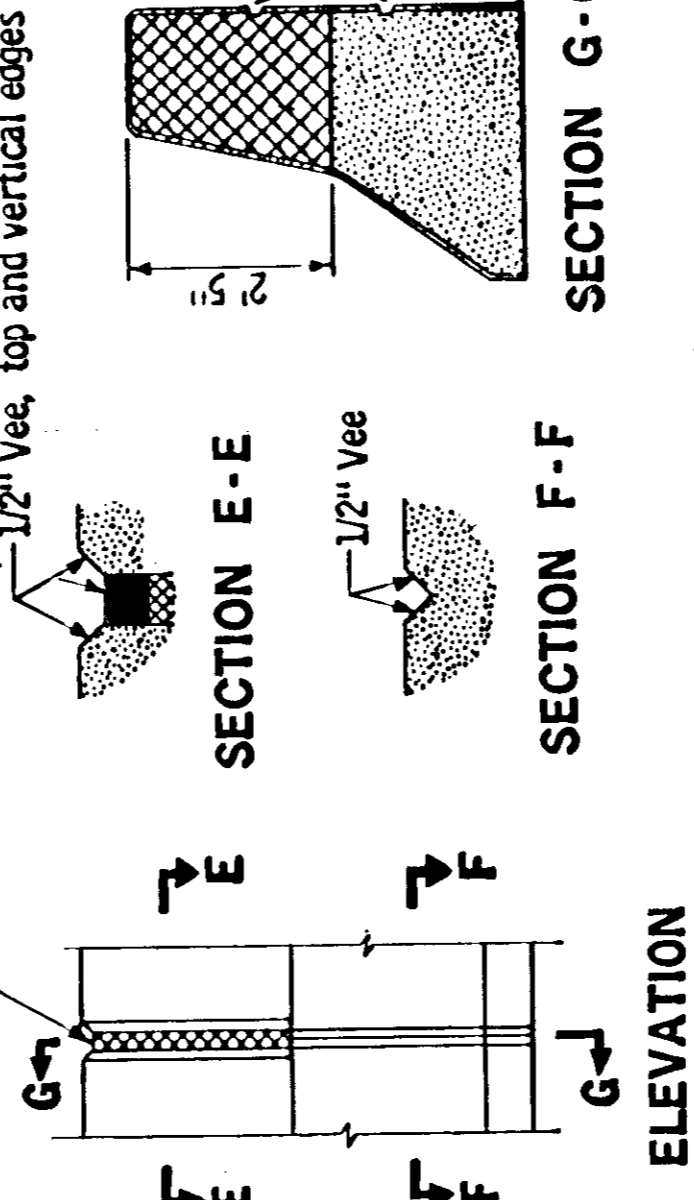
DEFLECTION JOINT

INSIDE ELEVATION OF RAILING
(WEARING COURSE NOT SHOWN)

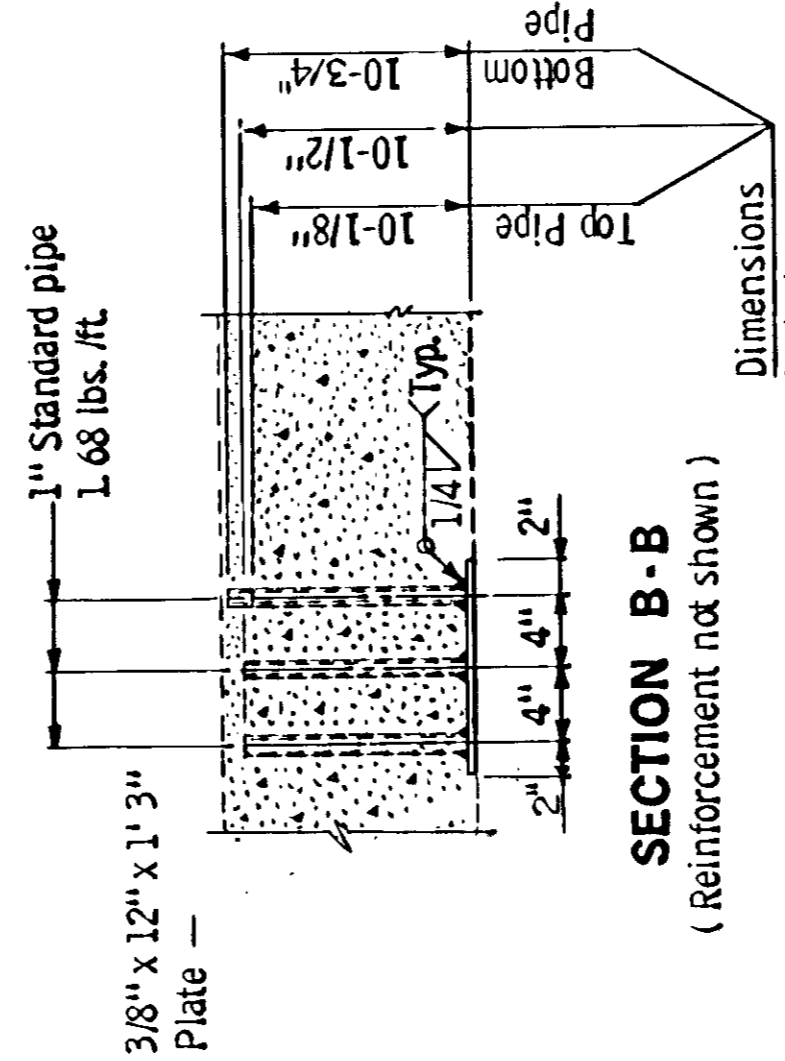
JOINT SEALER 1" DEEP ALL AROUND NON-BITUMINOUS JOINT SEALER. SEE SPECIAL PROVISIONS.



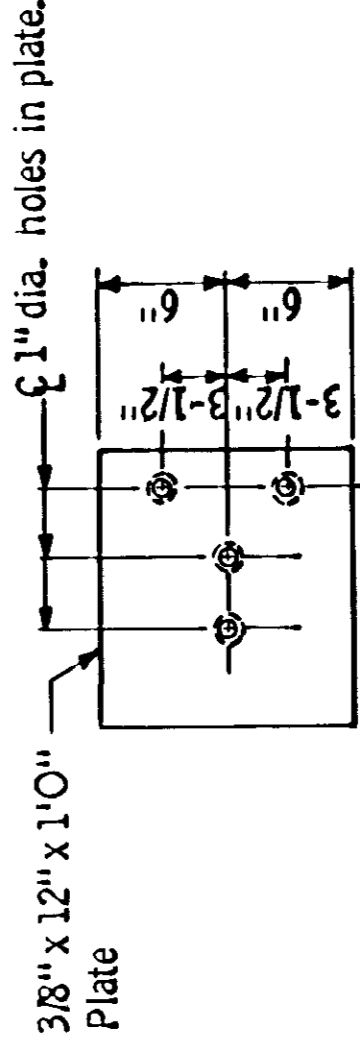
RAIL RUSTICATION



DEFLECTION JOINT DETAILS



SECTION B-B
(Reinforcement not shown)



VIEW C-C

GUARDRAIL CONNECTION DETAIL

Galvanize after fabrication per Spec. 3394
Estimated Weight = 20lbs.

BAR NO.	LENGTH	SHAPE	LOCATION
R501E	7'-10"	Bent	End Vertical
R502E	5'-7"	Bent	Rail Vertical
R703E	6'-6"	Bent	End Post
R705E	5'-7"	Bent	End Post
R407E		Str't.	Rail Long.
R408E		Str't.	Rail Long.

GENERAL NOTES:

Conc. Railing = 560 lbs./ft.
Conc. Railing = .138 cu. yds./ft.

Rail and end post to be Concrete Mix No. 3X46

Guardrail connection to be Structural Steel, Spec. 3306.

Finish all edges of rail and end post with 1/2" vee except where otherwise noted.

See superstructure sheet for joint spacing.

Maximum spacing of concrete deflection joints shall be 20' 0"

Guardrail connection to be included in price bid for other items.

Rail quantities are included in summary of quantities for superstructure.

Length of railing concrete to be measured for payment between outside faces of railing.

ALL BARS SHALL BE EPOXY COATED IN accordance with Spec. 3301

SEE SHEET 6 FOR RAILING BAR LIST AND SUMMARY OF QUANTITIES.

SLIPFORMING OF CONCRETE RAILING WILL NOT BE PERMITTED.

MODIFIED

REVISED: NOV. 26, 1985
APPROVED: FIG. 5-397.122

DES: MVD/OT AB
CHK: JJ

DR: MVD/OT AB
CHK: JJ

TITLE:
CONCRETE RAILING (TYPE J)
WITH BRIDGE SLAB SIDEWALK AND INTEGRAL END POST

Sheet No. 7 of 13 Sheets

Bridge No. 02553