

SUMMARY OF QUANTITIES ~ 1 PIER

STRUCTURE CONCRETE (1A43)	9	CU. YD.
STRUCTURE CONCRETE (3Y43)	10	CU. YD.
REINFORCEMENT BARS	415	POUND
REINFORCEMENT BARS (EPOXY COATED)	1890	POUND
NAMEPLATE	1	
TREATED TIMBER PILING DELIVERED	385	LIN. FT.
TREATED TIMBER PILING DRIVEN	385	LIN. FT.
TREATED TIMBER TEST PILES, 65' LG.	1	EACH

- ②
- ①
- ①
- ①
- ①
- ②

① DOES NOT INCLUDE TEST PILES.
 ② BRIDGE NO. 02555, DATED 1990. INCLUDED IN PRICE BID FOR OTHER ITEMS.

COMPUTED PILE LOADS ~ TONS PER PILE AT PIER	
DEAD LOAD	19.0
LIVE LOAD OVERTURNING	37.5
* TOTAL	22.6

* 56.5 (REDUCTION PER A.A.S.H.T.O. 12.22 GROUP II LOADING)
 1.25 = 22.6 T/P

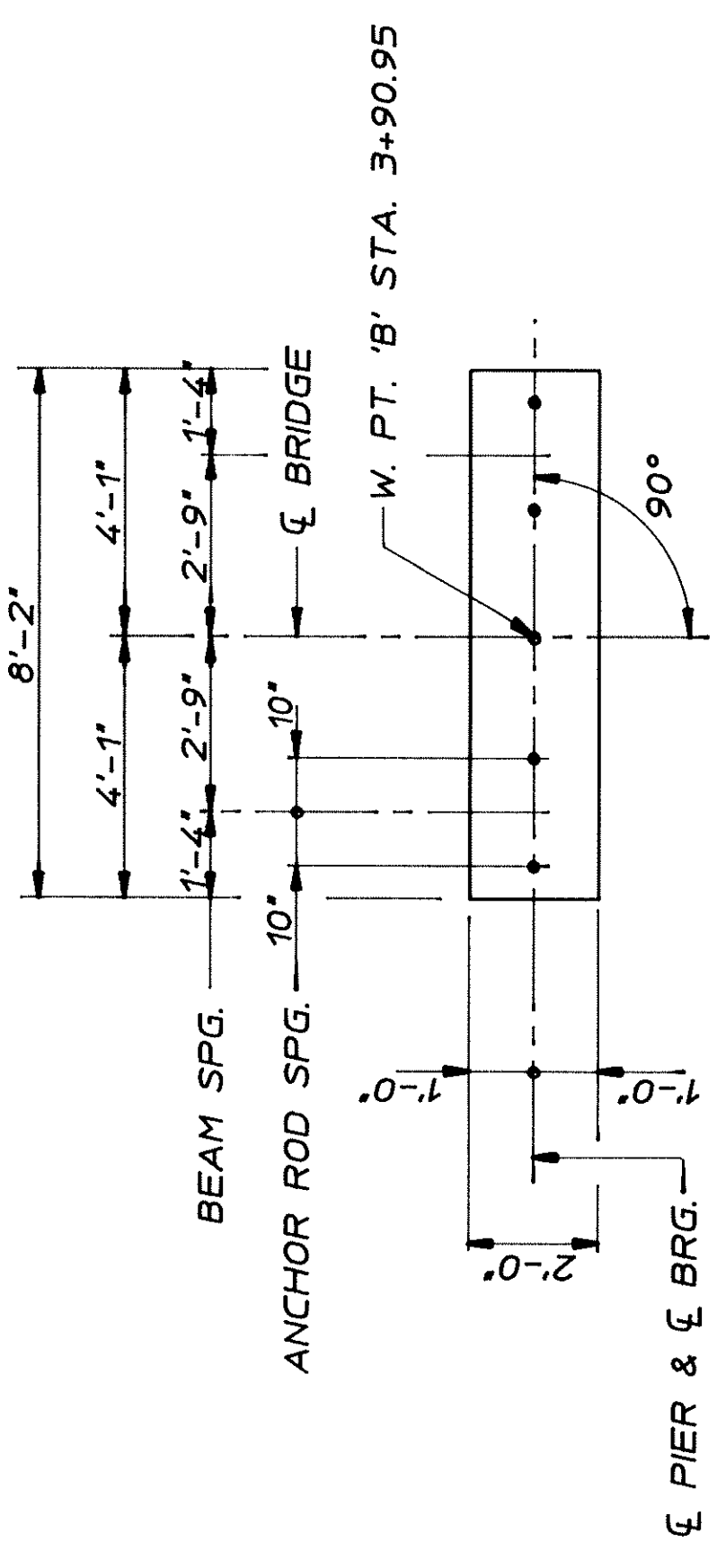
PILE NOTES:

7 - TRTD. TBR. PILE, 55' EST. LGTH.
 1 - TRTD. TBR. TEST PILES, 65' LONG
 8 - TRTD. TBR. PILES REQ'D FOR 1 PIER

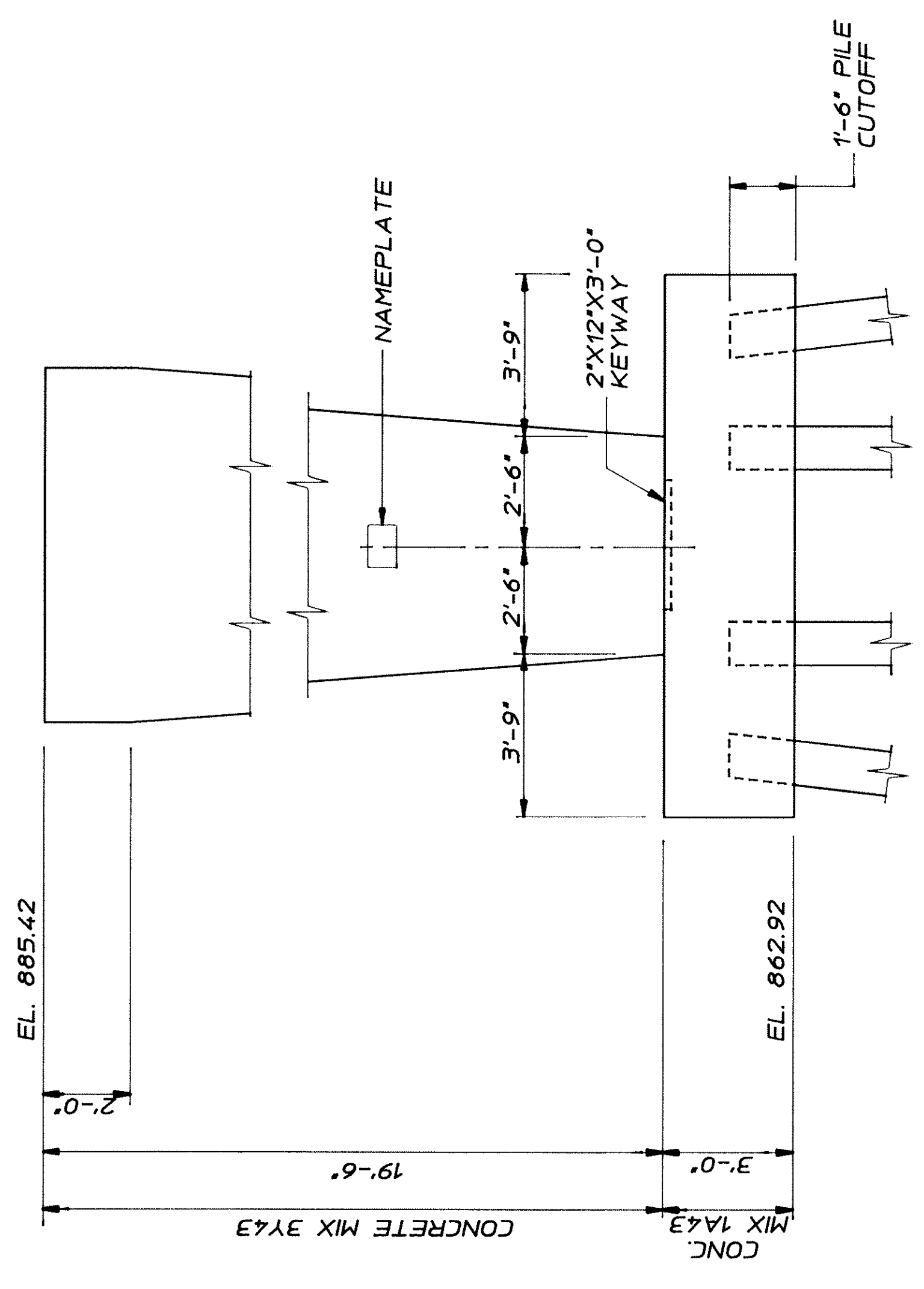
FOR TEST PILE LOCATIONS, SEE SURVEY SHEET.

PILES MARKED THUS TO BE BATTERED 2° PER FOOT IN DIRECTION SHOWN.

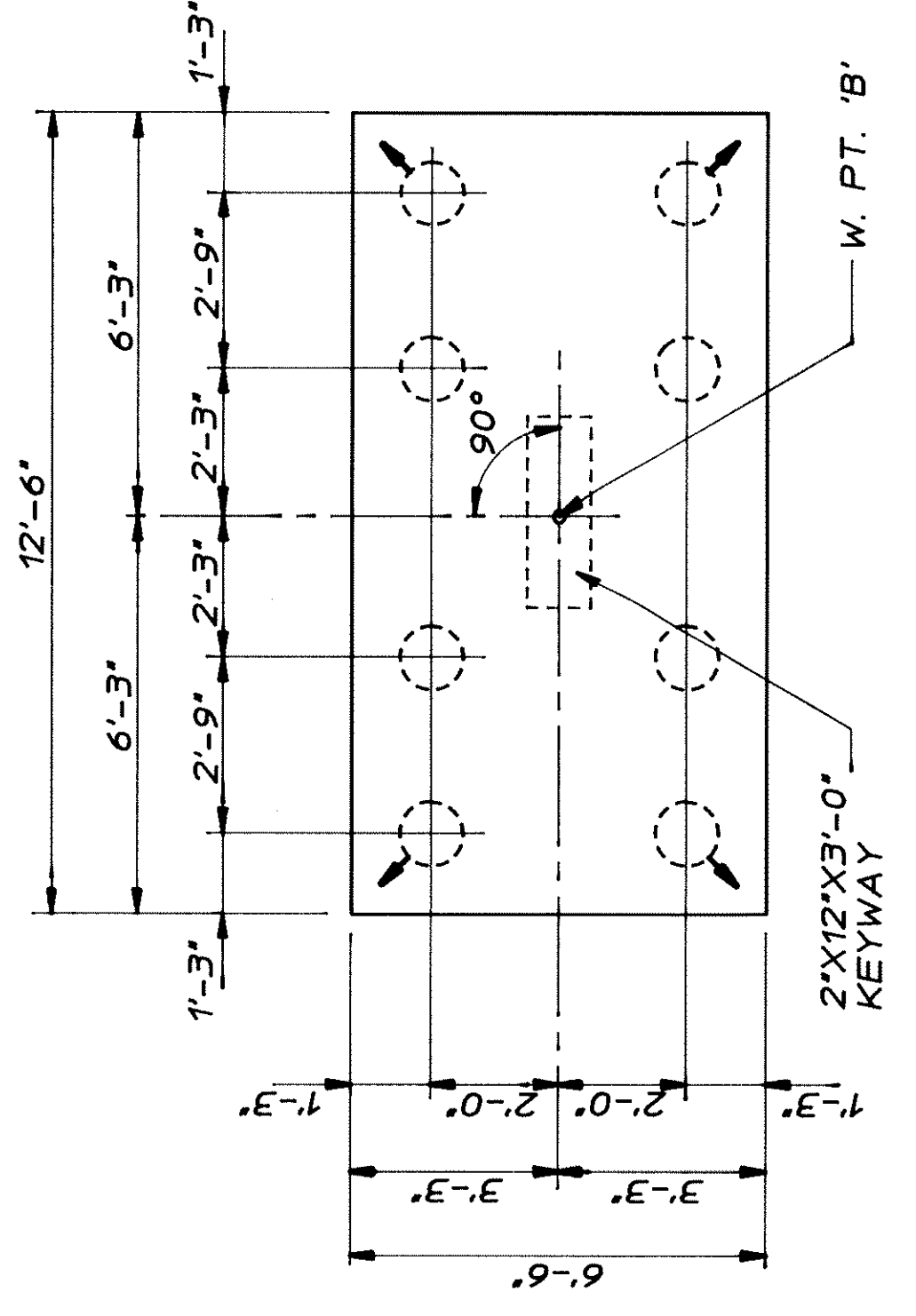
PILE SPG. SHOWN IS AT BOTTOM OF FOOTING.



PLAN
 SCALE: 3/8"=1'-0"



ELEVATION
 SCALE: 3/8"=1'-0"



FOOTING PLAN
 SCALE: 3/8"=1'-0"

SIDE VIEW
 SCALE: 3/8"=1'-0"

MINNESOTA DEPARTMENT OF TRANSPORTATION

BRIDGE NO. 02555

PIER DETAILS

APPROVED:

PROJ. 85-05-116	RMT
SHEET 3 OF 17 SHEETS	02555
	RRT