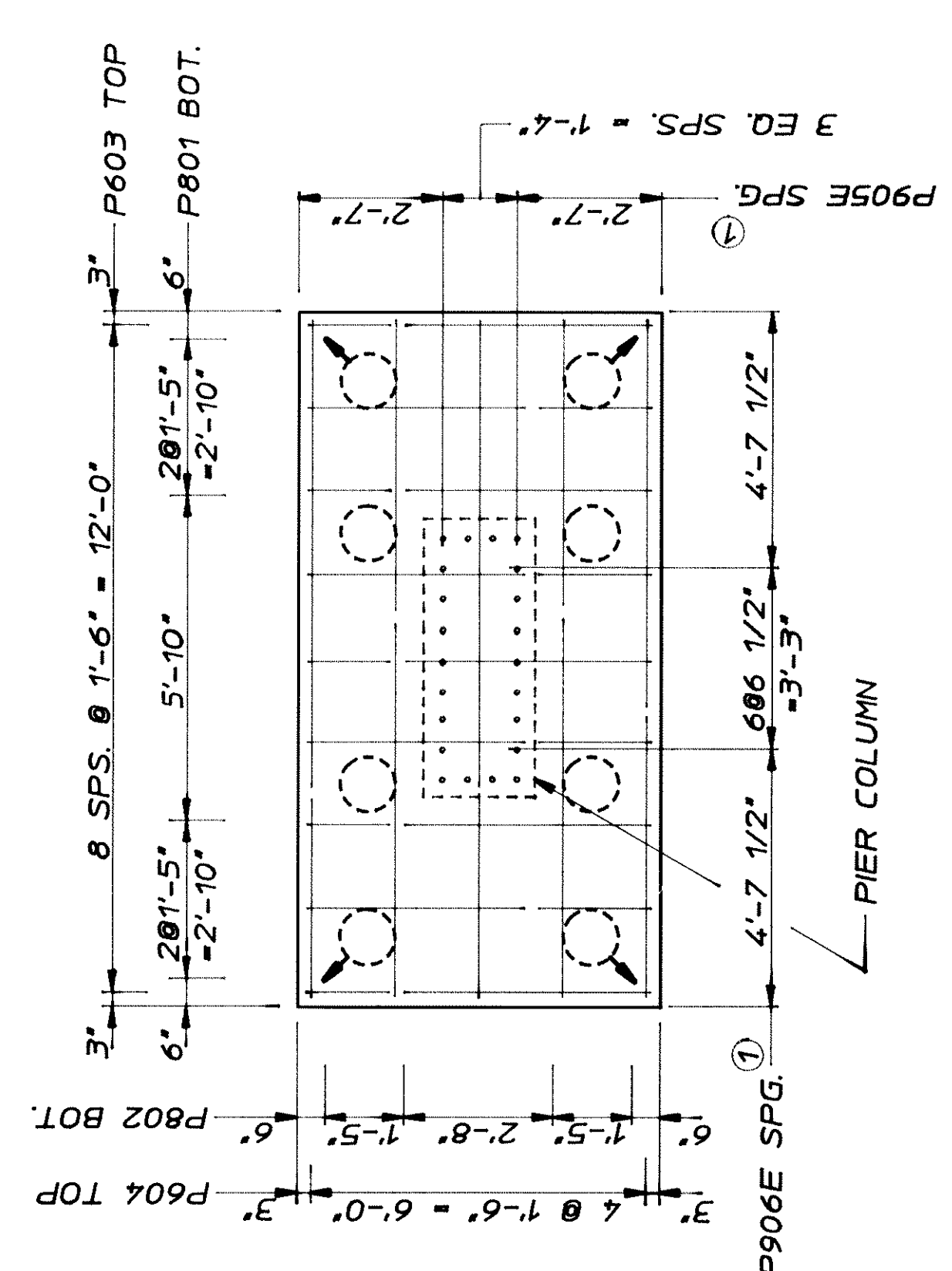
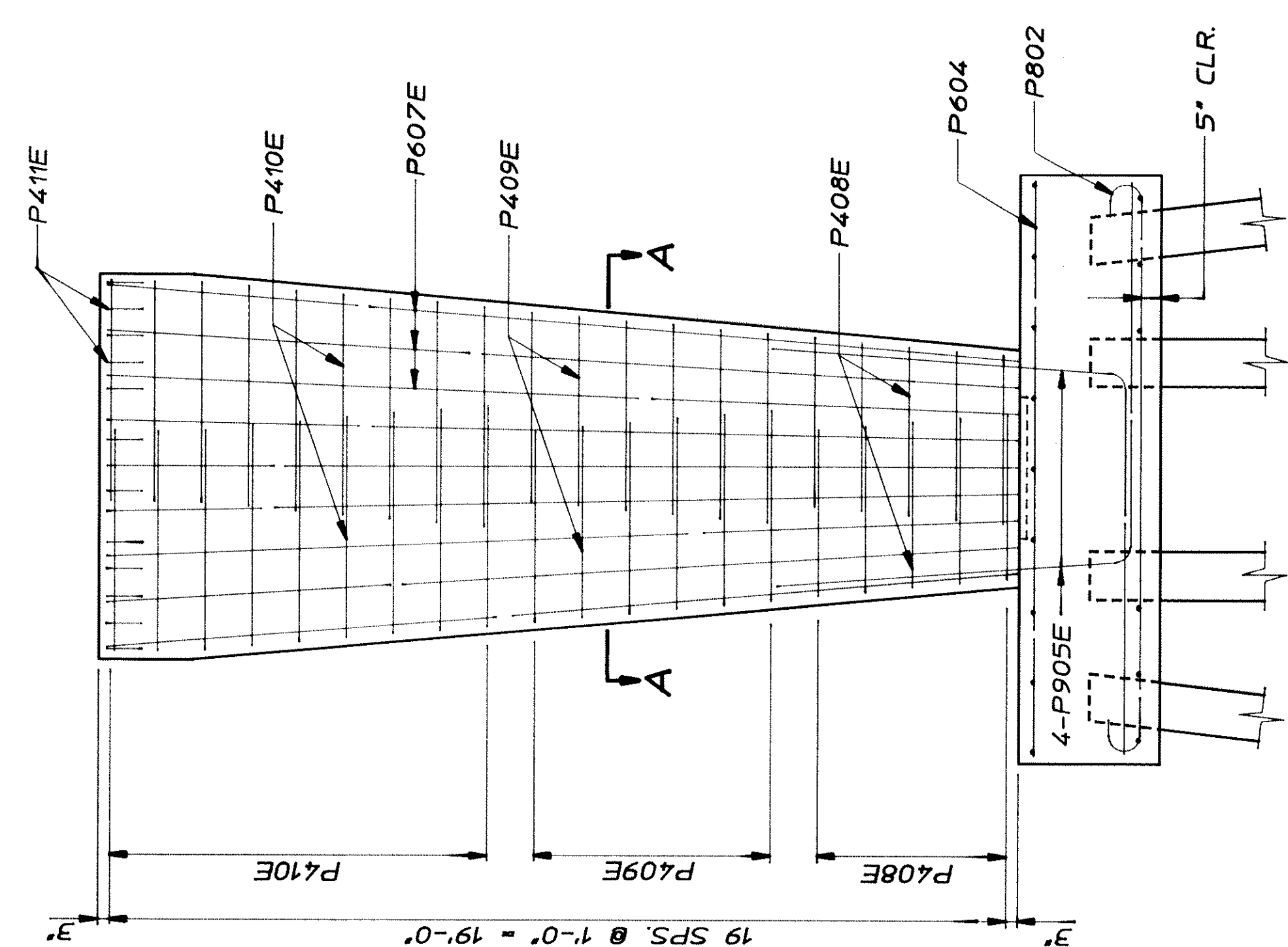
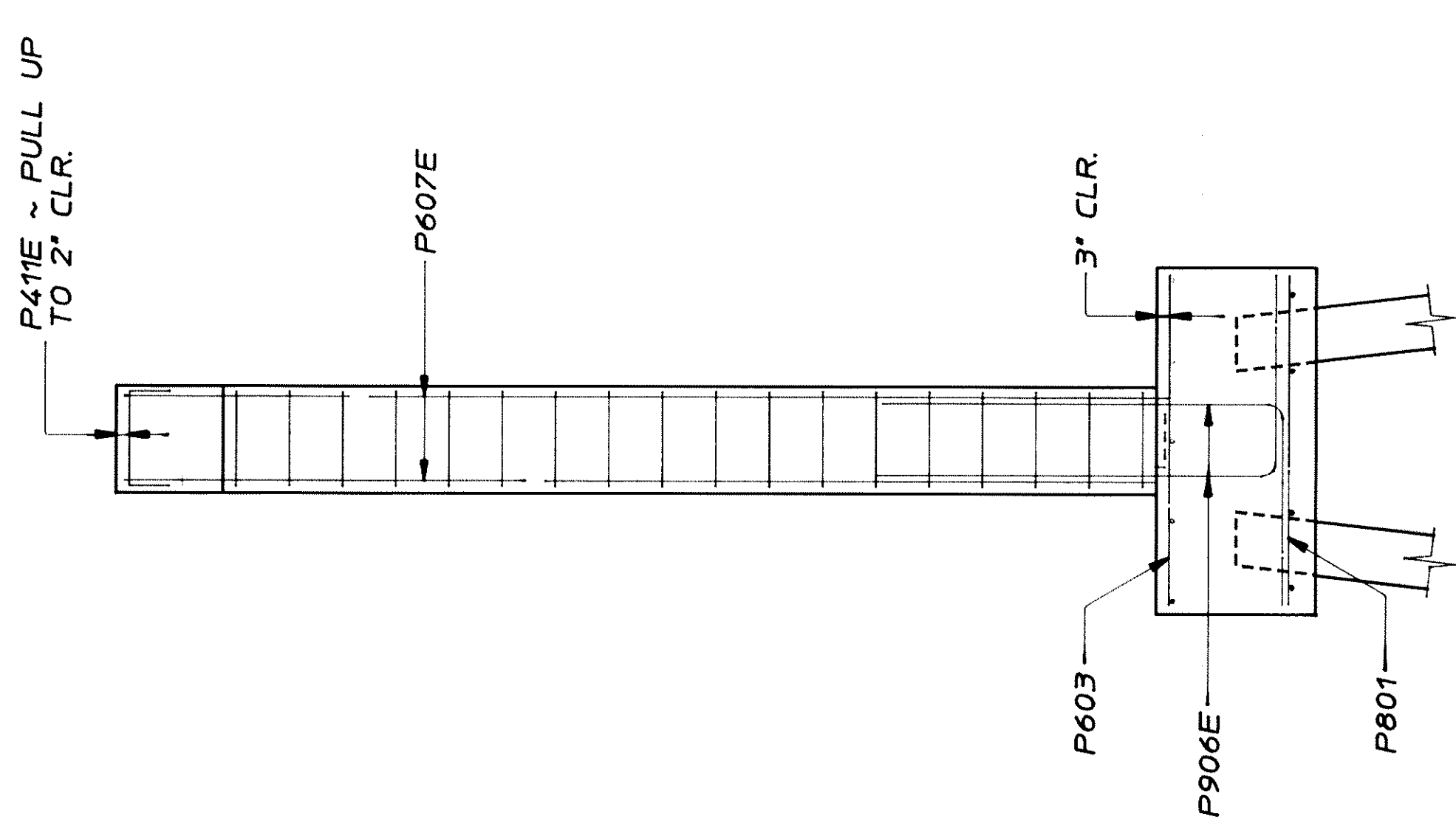
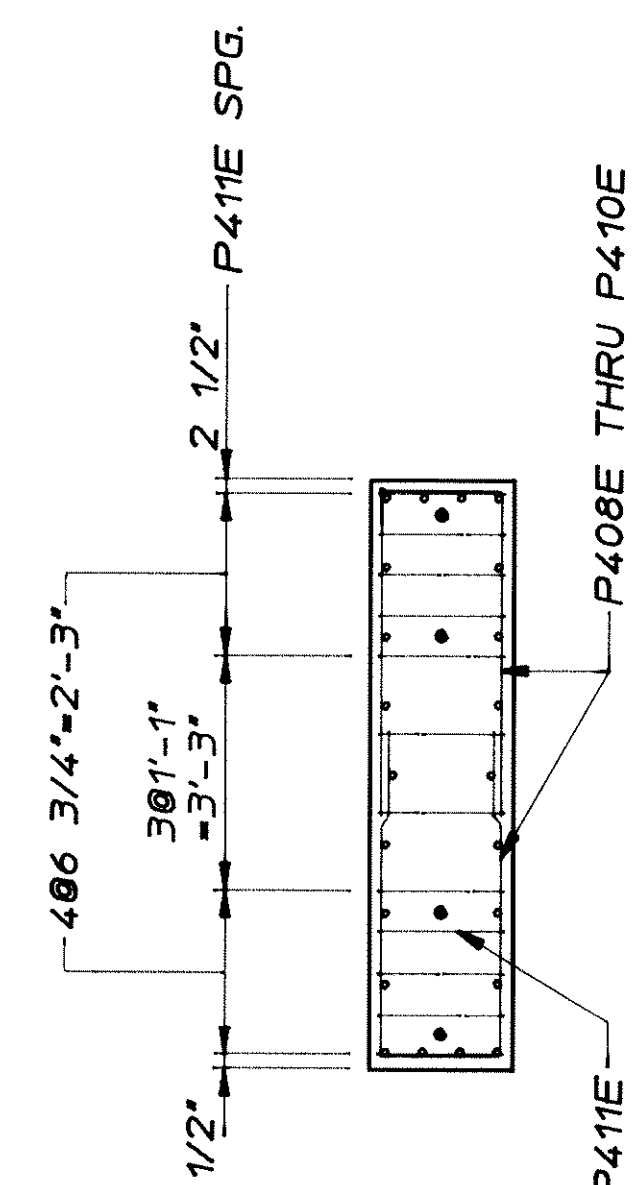
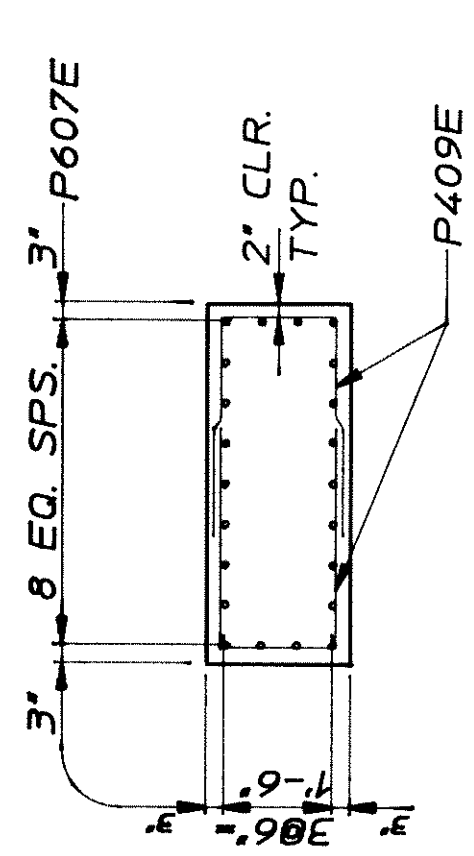
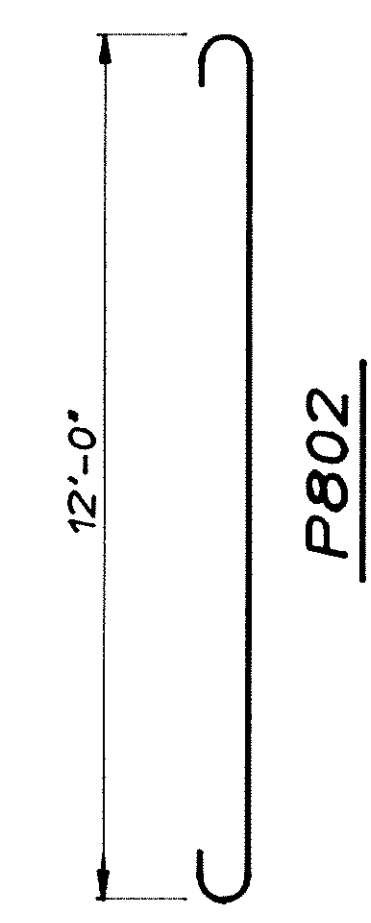
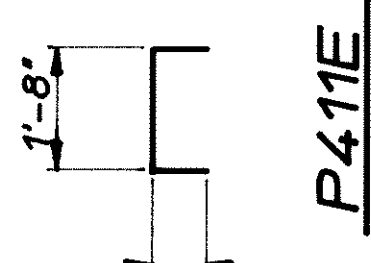
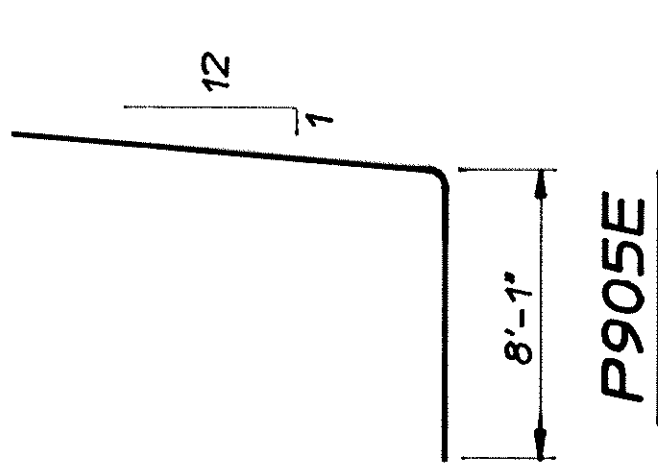
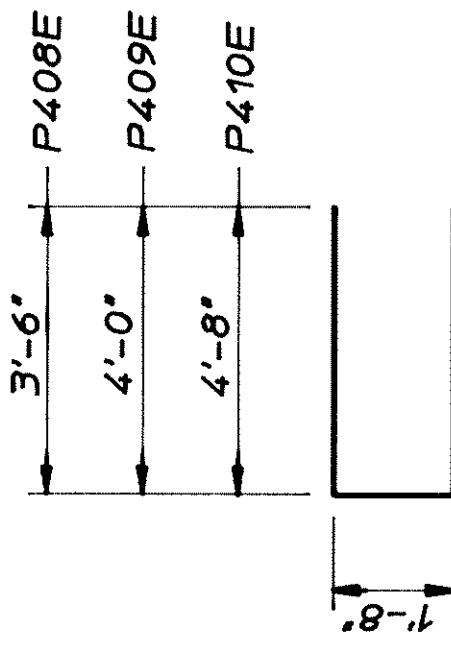


BILL OF REINFORCEMENT ~ 2 ABUTMENTS

BAR	NO.	LENGTH	SHAPE	LOCATION
P801	6	6'-0"	STRT.	FOOTING ~ TRANSV. BOT.
P802	4	13'-10"	BENT	FOOTING ~ LONGIT. BOT.
P603	9	6'-0"	STRT.	FOOTING ~ TRANSV. TOP
P604	5	12'-0"	STRT.	FOOTING ~ LONGIT. TOP
P905E	8	15'-7"	BENT	FOOTING ~ DOWEL
P906E	14	11'-1"	BENT	FOOTING ~ DOWEL
P607E	22	19'-4"	STRT.	CAP ~ VERTICAL
P408E	10	8'-8"	BENT	CAP ~ TIE
P409E	12	9'-8"	BENT	CAP ~ TIE
P410E	18	11'-0"	BENT	CAP ~ TIE
P411E	12	3'-2"	BENT	BR. SEAT



① MEASURED AT TOP OF FOOTING.



MINNESOTA DEPARTMENT OF TRANSPORTATION
BRIDGE NO. 02555
PIER REINFORCEMENT

APPROVED:
PROJ. 85-05-116
SHEET 4 OF 17 SHEETS

RMT
02555
RRT