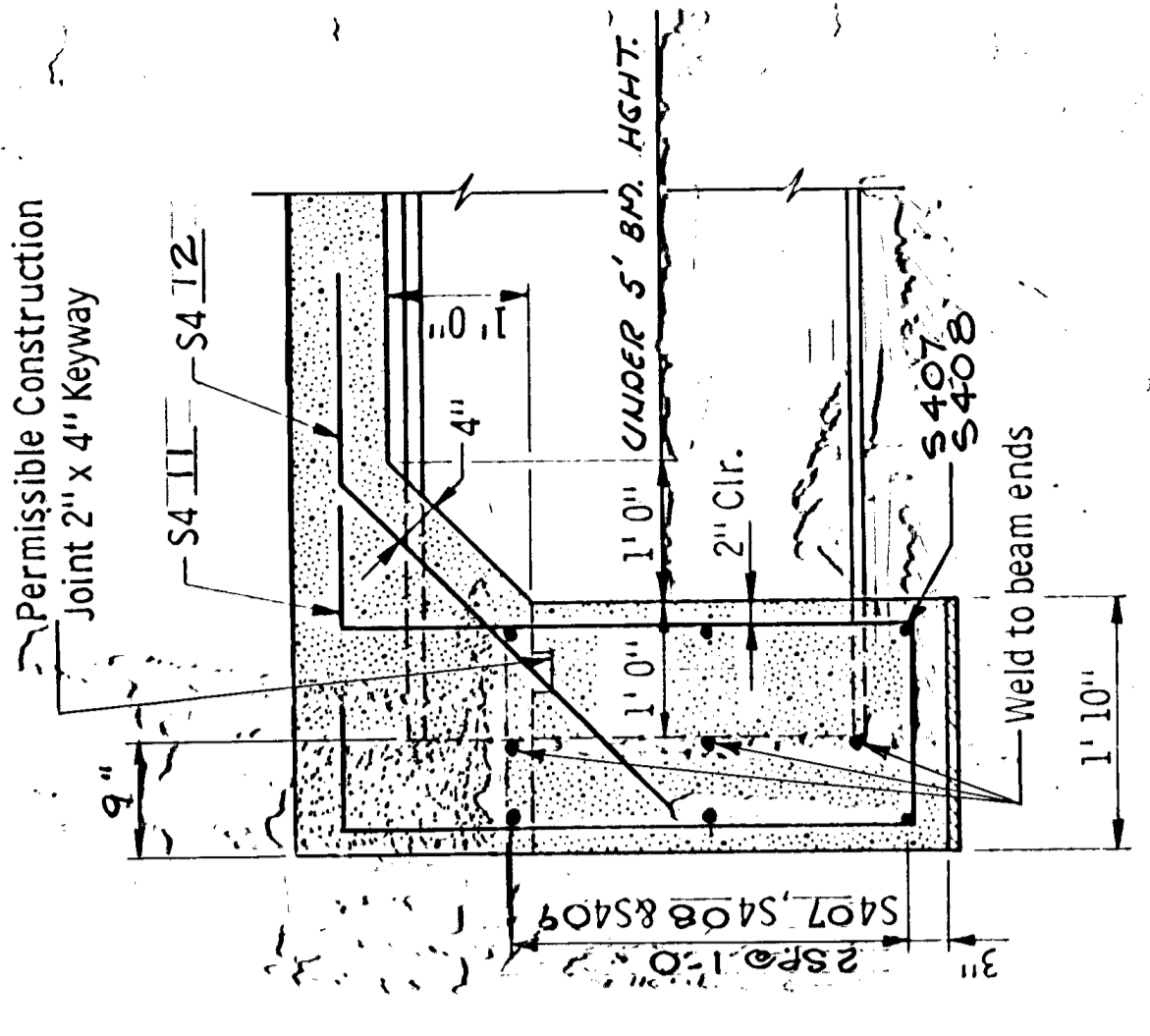


**PART TRANSVERSE SECTION AT END DIAPHRAGM**

See Superstructure Details

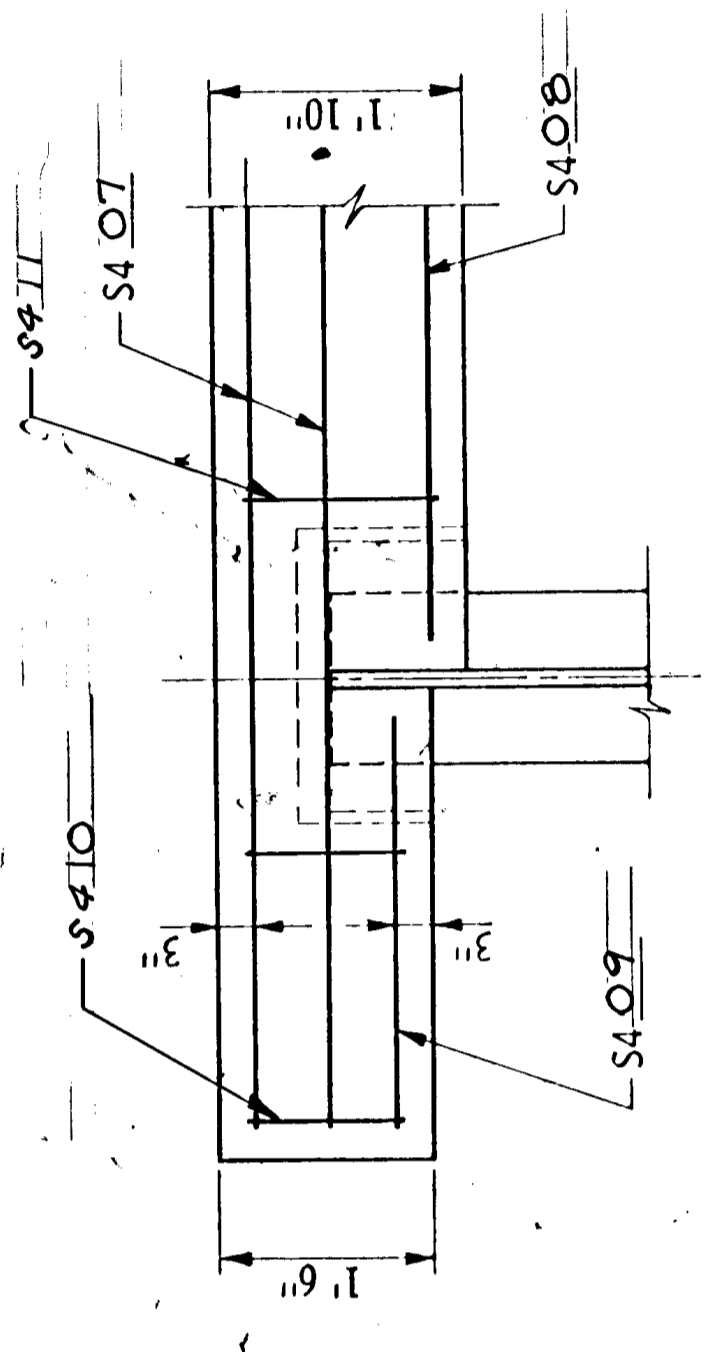
Cut S408 in field as necessary to clear bearing assembly



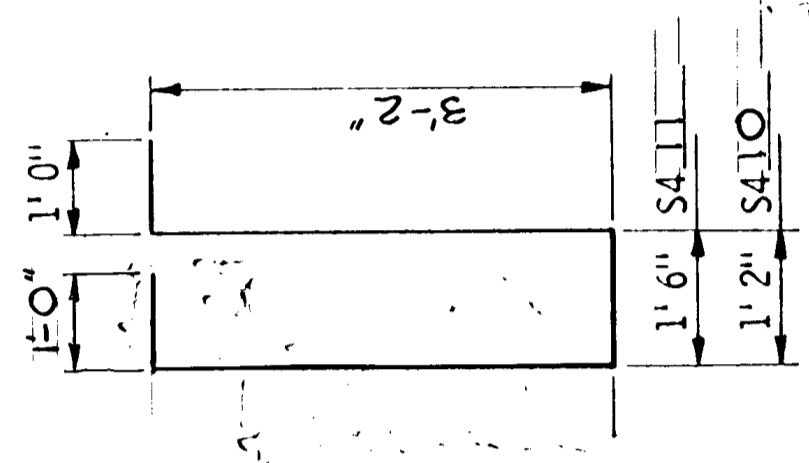
**SECTION B-B**

All diaphragm bars shown are listed with the superstructure reinforcement. Diaphragm concrete and reinforcement quantities are included in superstructure quantities.

TO BE USED AT ABUTMENT END ONLY



**SECTION A-A**



**S412**

May be eliminated for small beam height

APPROVED: Oct. 20, 1976  
 Developed by: OFFICE OF ENGINEERING STANDARDS AND BRIDGE DESIGN  
 Issued by: OFFICE OF ENGINEERING STANDARDS

MINNESOTA  
 DEPARTMENT OF TRANSPORTATION  
**CONCRETE END DIAPHRAGM**  
 (FOR STEEL BEAMS WITH PILE BENT ABUTMENT)

REVISION:  
 JULY 25, 1980  
**B809**

DETAIL NO.