

MINNESOTA DEPARTMENT OF TRANSPORTATION

ANOKA COUNTY

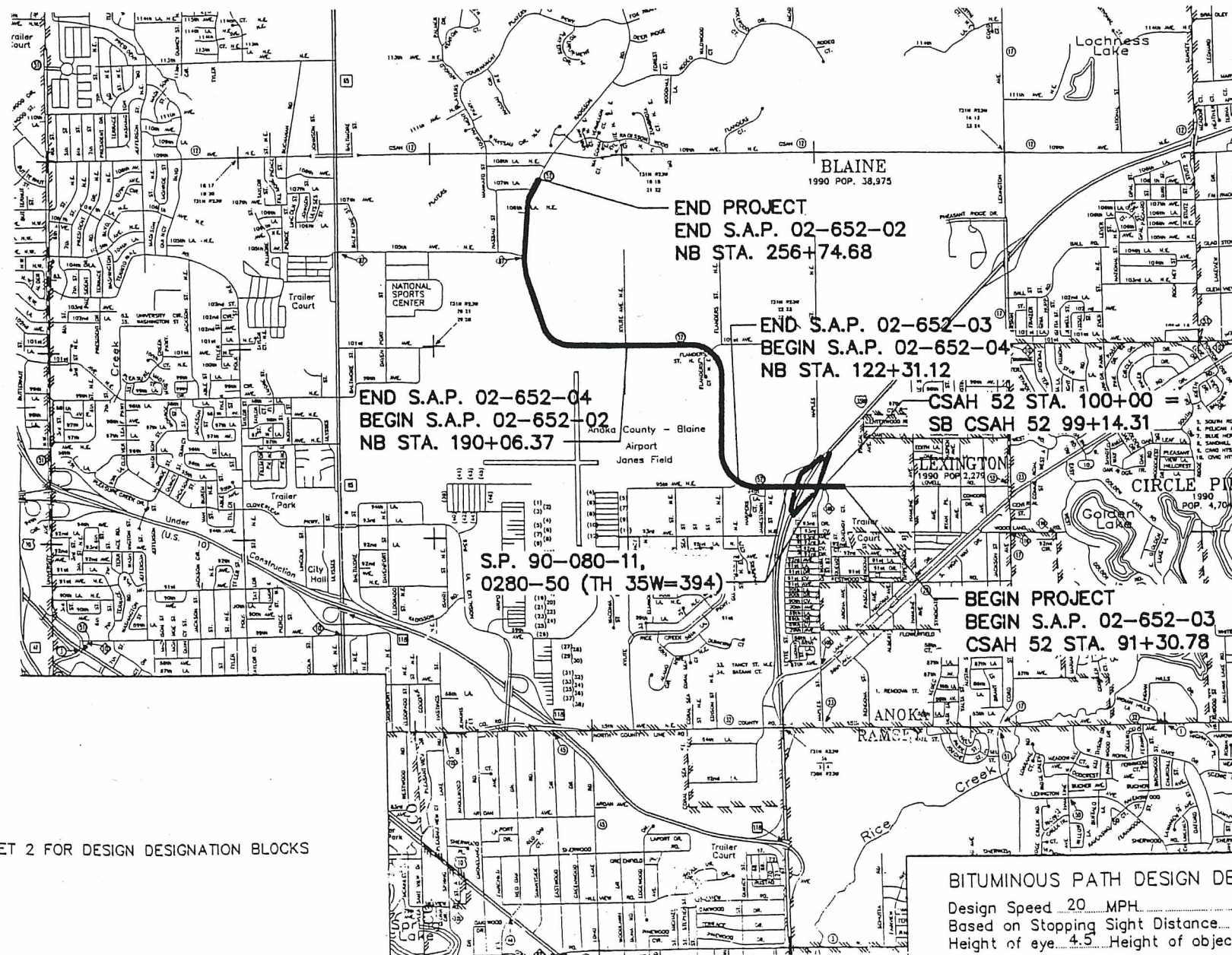
CONSTRUCTION PLAN FOR GRADING, CONCRETE AND BITUMINOUS SURFACE, BIT. TRAIL, SIGNAL SYSTEM, LIGHTING, TMS, PARK & RIDE LOT, BRIDGE NO. 02566 & 02J15

LOCATED ON C.S.A.H. 52 BETWEEN 1670 FT E. OF I-35W AND 1200 FT S. OF C.S.A.H. 12 (Geographic Description)

FROM _____ TO _____ (Legal Description)

STATE PROJ. NO. S.P. 90-080-11, 0280-50 (TH 35W=394), 02-652-02, 02-652-03, 02-652-04, 106-020-021, 106-020-022

GROSS LENGTH 16543.90 FEET 3.133 MILES
BRIDGES-LENGTH 231.34 FEET 0.044 MILES
EXCEPTIONS-LENGTH _____ FEET _____ MILES
NET LENGTH 16312.56 FEET 3.089 MILES



BITUMINOUS PATH DESIGN DESIGNATION

Design Speed 20 MPH
Based on Stopping Sight Distance
Height of eye 4.5 Height of object 0.0

PLAN SYMBOLS

- COUNTY LINE
- TOWNSHIP OR RANGE LINE
- SECTION LINE
- QUARTER LINE
- SIXTEENTH LINE
- RIGHT OF WAY LINE
- SLOPE EASEMENT
- PRESENT RIGHT OF WAY
- PROPERTY LINE
- CORPORATE OR CITY LIMITS
- RETAINING WALL
- RAILROAD
- RAILROAD RIGHT OF WAY
- RIVER OR CREEK
- DRAINAGE DITCH
- CULVERT
- DROP INLET
- GAUO RAIL
- BARBED WIRE FENCE
- WOVEN WIRE FENCE
- CHAIN LINK FENCE
- WOOD FENCE
- STONE WALL OR FENCE
- HEDGE

- LOWLAND
- TIMBER
- ORCHARD
- BRUSH
- NURSERY

- CATTLE GAUD
- OVERPACS (Highway Over)
- UNDERPASS (Highway Under)
- BRIDGE

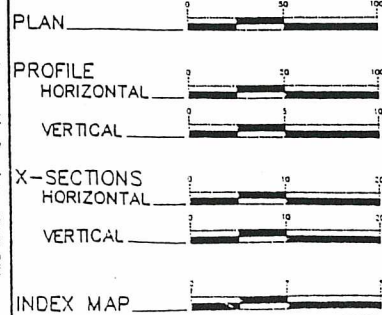
- BUILDING (One Story Frame)
- F-FRAME C-CONCRETE
- S-STONE T-TILE
- B-BRICK ST-STUCCO

- RAILROAD CROSSING BELL
- RAILROAD CROSSING GATE
- MANHOLE
- CATCH BASIN
- FIRE HYDRANT
- C-CAST IRON MONUMENT
- IRON PIN
- GRAVEL PIT
- SAND PIT
- BORROW PIT
- POCK QUARRY

UTILITY SYMBOLS

- POWER POLE LINE
- TELEPHONE OR TELEGRAPH POLE LINE
- JOINT TELEPHONE & POWER ON POWER POLES
- JOINT TELEPHONE & POWER ON TELEPHONE POLES
- ANCHOR
- STEEL TOWER
- STREET LIGHT
- PEDESTAL (Cable Terminal)
- GAS MAIN
- WATERMAIN
- TELEPHONE CABLE IN CONDUIT
- ELECTRIC CABLE IN CONDUIT
- TELEPHONE MANHOLE
- ELECTRIC MANHOLE
- BURIED TELEPHONE CABLE
- BURIED ELECTRIC CABLE
- AERIAL TELEPHONE CABLE
- SEWER (Sanitary)
- SEWER (Storm)
- SEWER MANHOLE

SCALES



SEE SHEET 2 FOR DESIGN DESIGNATION BLOCKS

GOVERNING SPECIFICATIONS

THE 2000 EDITION OF THE MINNESOTA DEPARTMENT OF TRANSPORTATION "STANDARD SPECIFICATIONS FOR CONSTRUCTION" SHALL GOVERN.
ALL TRAFFIC CONTROL DEVICES AND SIGNING SHALL CONFORM TO THE MN MUTCD, INCLUDING THE FIELD MANUAL FOR TEMPORARY TRAFFIC CONTROL ZONE LAYOUTS, DATED JANUARY 2001.

INDEX

SHEET NO.	DESCRIPTION
1,2	TITLE SHEET
3-5	GENERAL LAYOUT
6-11,11A	STATEMENT OF ESTIMATED QUANTITIES
12	STANDARD PLATES/INDEX OF TABULATIONS
13-22	EARTHWORK TABULATION
23	EARTHWORK BALANCE / CONSTRUCTION NOTES
24-35	TABULATIONS
36-53	INPLACE UTILITY PLANS AND TABULATIONS
54-61	TYPICAL SECTIONS
62,63	DETAILS
64	RETAINING WALL PROFILES
65,66,66A,67-69, 70,70A,70B,70C,71,72	STANDARD PLANS
73A-73D	DETOUR PLAN
74,75	TRAFFIC CONTROL TABULATION
75A	I-35W INPLACE SIGN CHANGES
76-119	CONSTRUCTION STAGING AND TRAFFIC CONTROL
120-123	ALIGNMENT PLAN
124-128	ALIGNMENT TABULATION
129-140	EXISTING CONDITIONS AND REMOVALS
141-167	CONSTRUCTION PLAN AND PROFILE
168-170	PARK AND RIDE CONSTRUCTION PLAN
171,172	INTERSECTION GEOMETRIC DETAILS
173-184	SUPERELEVATION PLAN
185-209	DRAINAGE PLAN AND PROFILE
210-215	DRAINAGE TABULATION
216-218	BOX CULVERT PLANS
219-222	CONCRETE JOINTING PLANS
223	GUARDRAIL PLAN
224-241	SIGNING PLANS
242-254	SIGNING AND STRIPING PLANS
255	STRIPING DETAILS AND TABULATIONS
256-281	TRAFFIC SIGNAL PLANS
282-305, 299A, 299B	TMS PLANS
306-312	TURF ESTABLISHMENT AND EROSION CONTROL PLAN
313-320	LANDSCAPE PLANS
321-327	RAMP LIGHTING PLANS
328,329	PARK AND RIDE LIGHTING PLANS
330,330A-356	PARK AND RIDE SHELTER PLANS
357-370	GRADING PLANS
371-461,461A-461E	CROSS SECTIONS
462-559	BRIDGE PLANS
1-56	BRIDGE PLANS

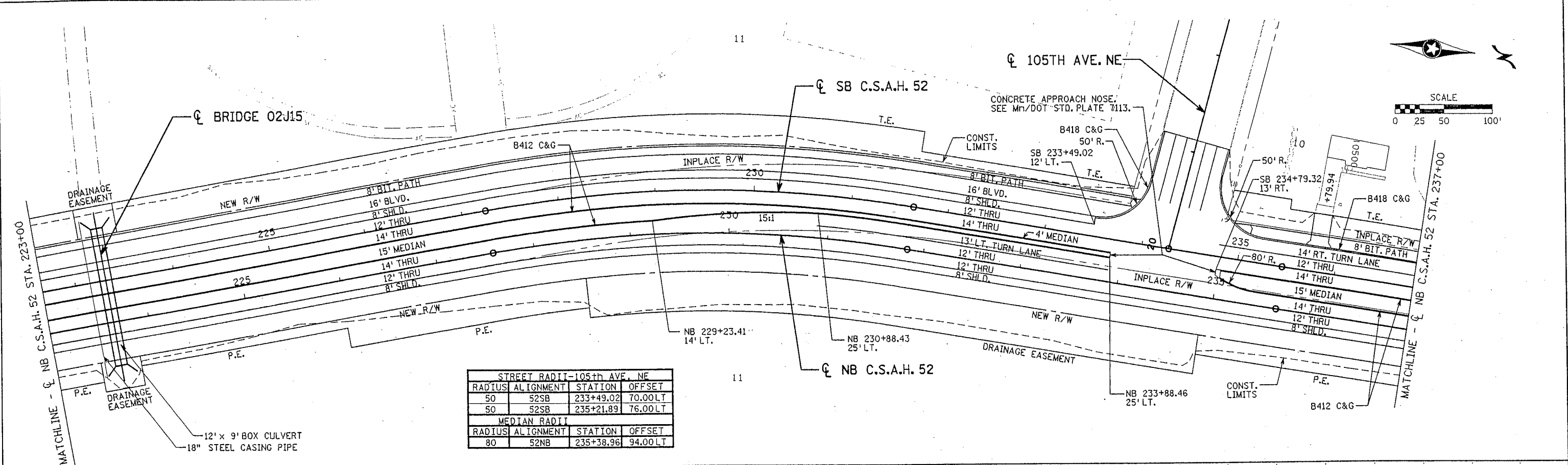
THIS PLAN CONTAINS 630 SHEETS
SHEET 73 NOT USED

TKDA

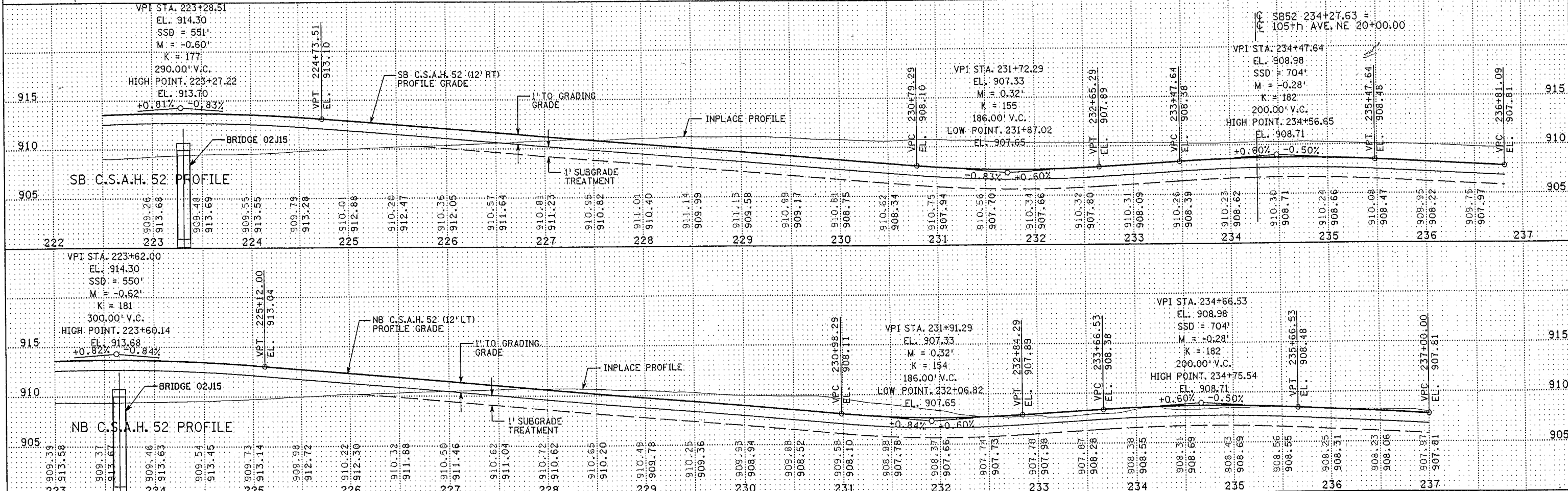
TOLZ, KING, DUVALL, ANDERSON AND ASSOCIATES, INCORPORATED
ENGINEERS-ARCHITECTS-PLANNERS SAINT PAUL, MINNESOTA

I HEREBY CERTIFY THAT THIS PLAN WAS PREPARED BY ME OR UNDER MY DIRECT SUPERVISION AND THAT I AM A DULY LICENSED PROFESSIONAL ENGINEER UNDER THE LAWS OF THE STATE OF MINNESOTA.

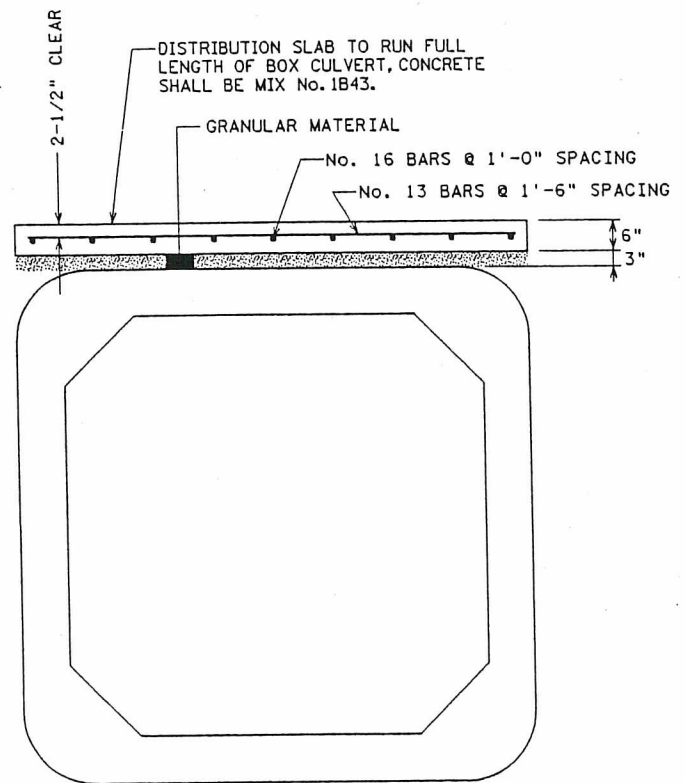
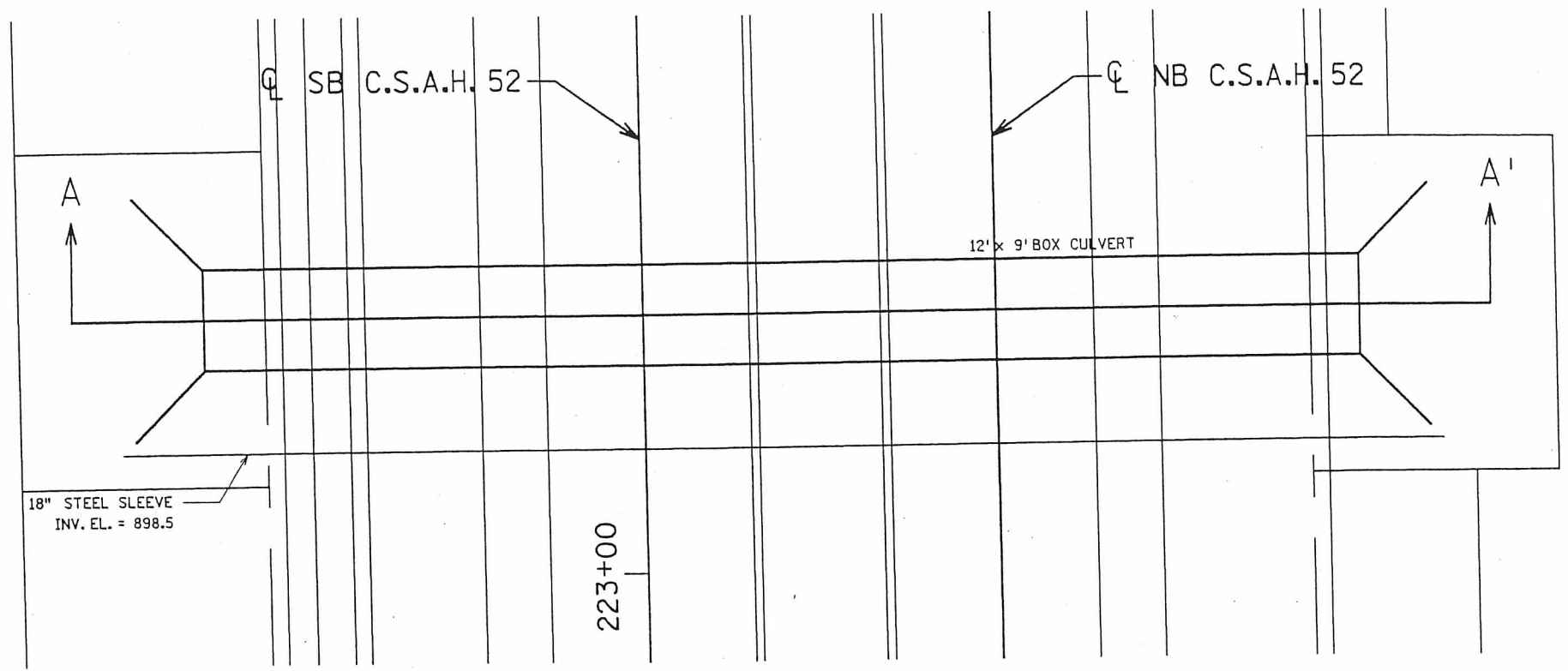
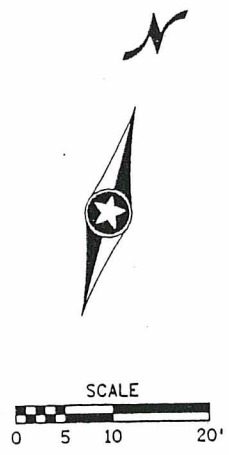
- DATE 1-11-02 REG. NO. 22405 ENGR. Joseph Weaver
Recommended for Approval *Dulles* 4/1/02
Recommended for Approval *...* 2/8/02
Recommended for Approval *...* 2/8/02
Recommended for Approval *...* 2/8/02
Recommended for Approval *...* 2/8/02
Recommended for Approval *...* 3/29/02
Office of Land Management Approval *...* 4/1/02
Recommended for Approval *...* 2/11/02
Approved 1/29/02
Approved 1/25/02
Reviewed for Compliance with State Aid Rules/Policy
Approved for State and Federal Aid Funding



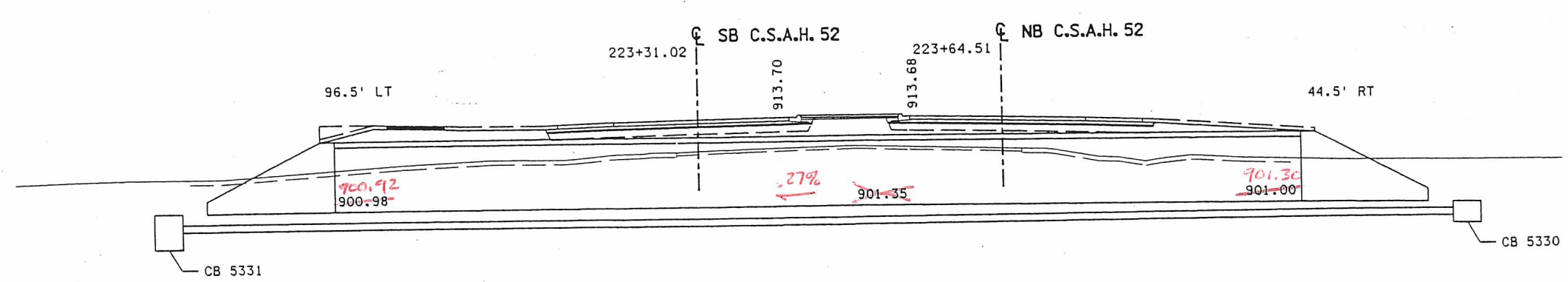
STREET RADIUS - 105TH AVE. NE			
RADIUS	ALIGNMENT	STATION	OFFSET
50	S2SB	233+49.02	70.00LT
50	S2SB	235+21.89	76.00LT
MEDIAN RADIUS			
RADIUS	ALIGNMENT	STATION	OFFSET
80	S2NB	235+38.96	94.00LT



I HEREBY CERTIFY THAT THIS PLAN WAS PREPARED BY ME OR UNDER MY DIRECT SUPERVISION AND THAT I AM A DULY LICENSED PROFESSIONAL ENGINEER UNDER THE LAWS OF THE STATE OF MINNESOTA. <i>Joseph Zwany</i> DATE 2-14-02 L.I.C. NO. 22405		DRAWN BY RRC DATE 9-21-01 DESIGN BY RRC DATE 9-20-01 CHECKED BY JMW DATE 9-24-01	S.P. 0280-50 (TH 35W) S.P. 90-080-11 S.A.P. 02-652-02 S.A.P. 02-652-03 S.A.P. 02-652-04 S.A.P. 106-020-021, 106-020-022	TKDA TOLTZ, KING, DUWALL, ANDERSON AND ASSOCIATES, INCORPORATED ENGINEERS-ARCHITECTS-PLANNERS SAINT PAUL, MINNESOTA	ANOKA COUNTY CONSTRUCTION PLAN AND PROFILE C.S.A.H. 52 RECONSTRUCTION NB C.S.A.H. 52 STA. 223+00 TO 237+00	SHEET 152 OF 559
---	--	--	--	--	---	----------------------------------



DISTRIBUTION SLAB DETAIL



SECTION A - A'

NO	DATE	BY	CKD	APPR	REVISION

I HEREBY CERTIFY THAT THIS PLAN WAS PREPARED BY ME OR UNDER MY DIRECT SUPERVISION AND THAT I AM A DULY LICENSED PROFESSIONAL ENGINEER UNDER THE LAWS OF THE STATE OF MINNESOTA.

Adam E. Sandus
 DATE 1-9-02 LIC. NO. 22505

DRAWN BY RRC DATE 9-21-01
 DESIGN BY JMW DATE 9-20-01
 CHECKED BY KRC DATE 9-24-01

S.P. 0280-50 (TH 35W)
 S.P. 90-080-11
 S.A.P. 02-652-02
 S.A.P. 02-652-03
 S.A.P. 02-652-04
 S.A.P. 106-020-021, 106-020-022

TKDA
 TOLTZ, KING, DUVALL, ANDERSON
 AND ASSOCIATES, INCORPORATED
 ENGINEERS-ARCHITECTS-PLANNERS SAINT PAUL, MINNESOTA

ANOKA COUNTY
 BOX CULVERT DETAIL
 C.S.A.H. 52 RECONSTRUCTION

SHEET 216 OF 559