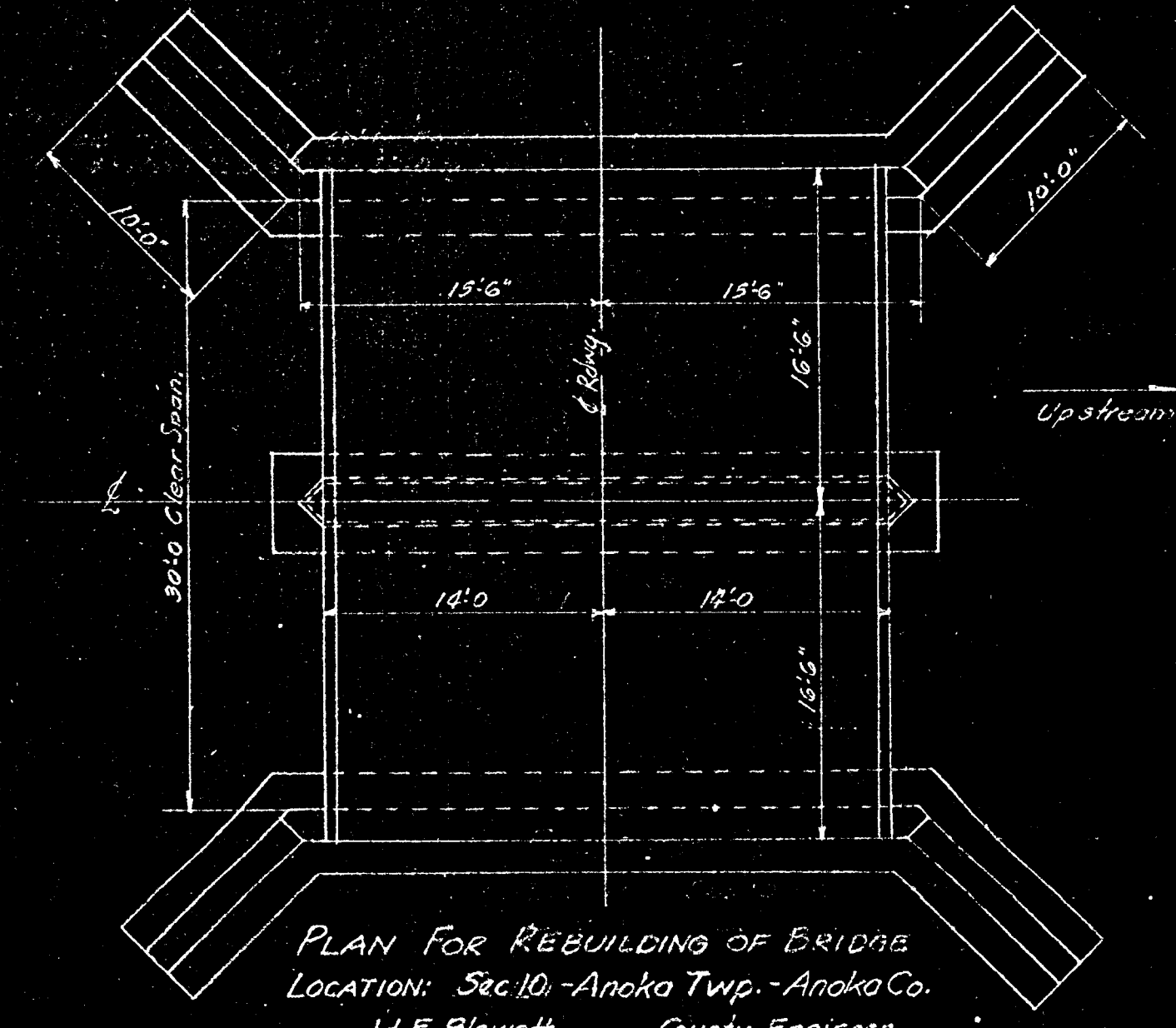


HALF SECTION A-A
NEW ABUTMENT

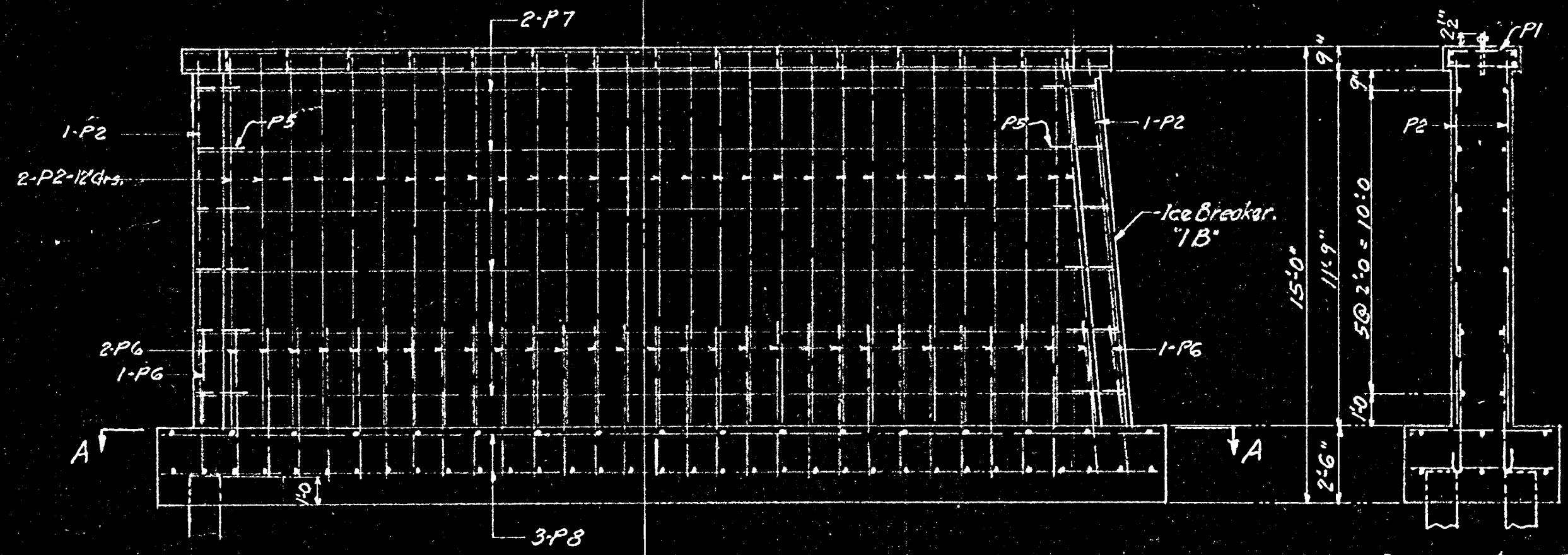
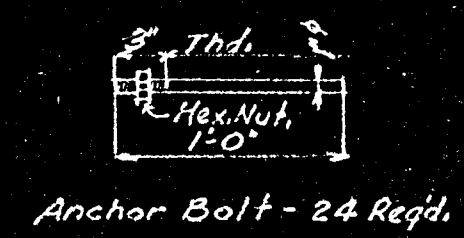
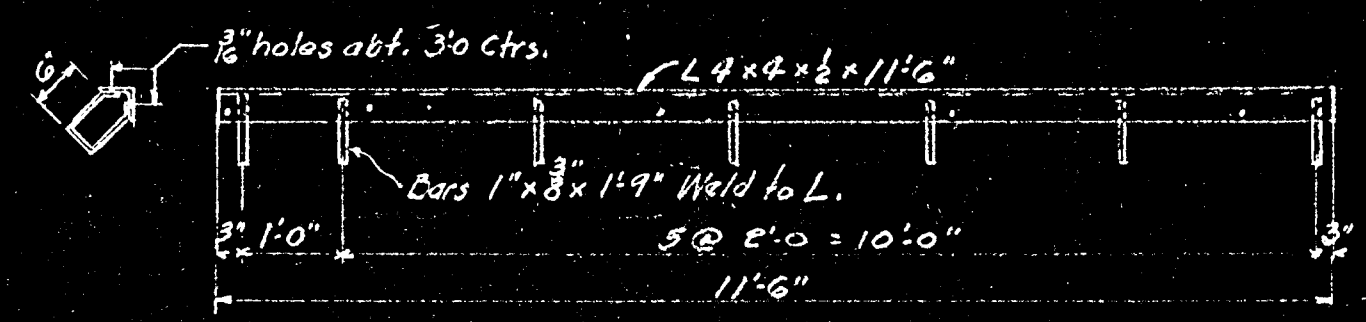
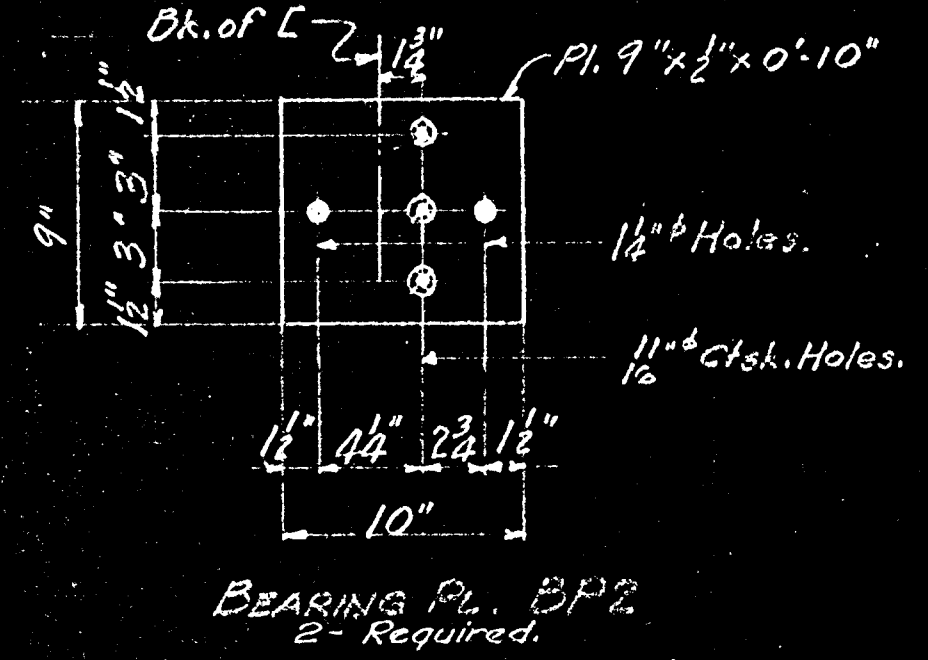
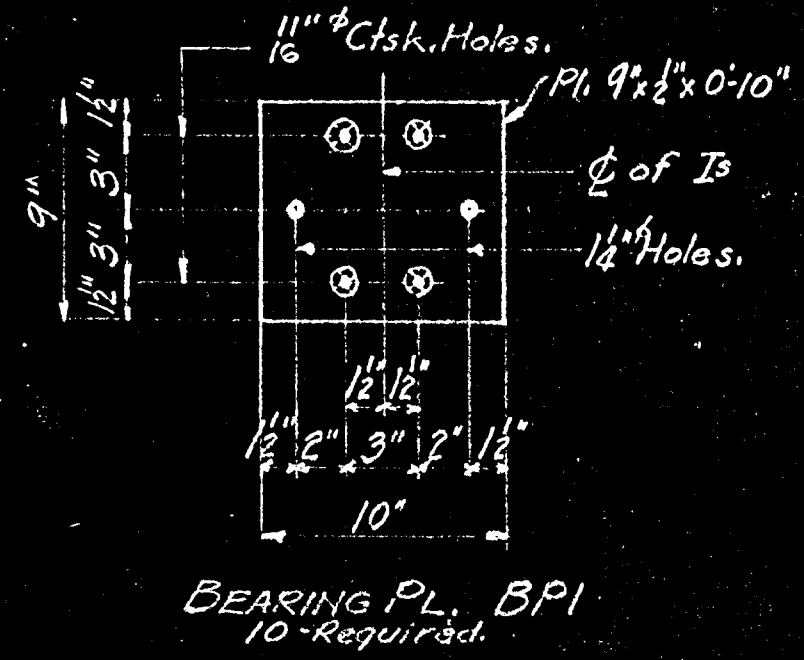
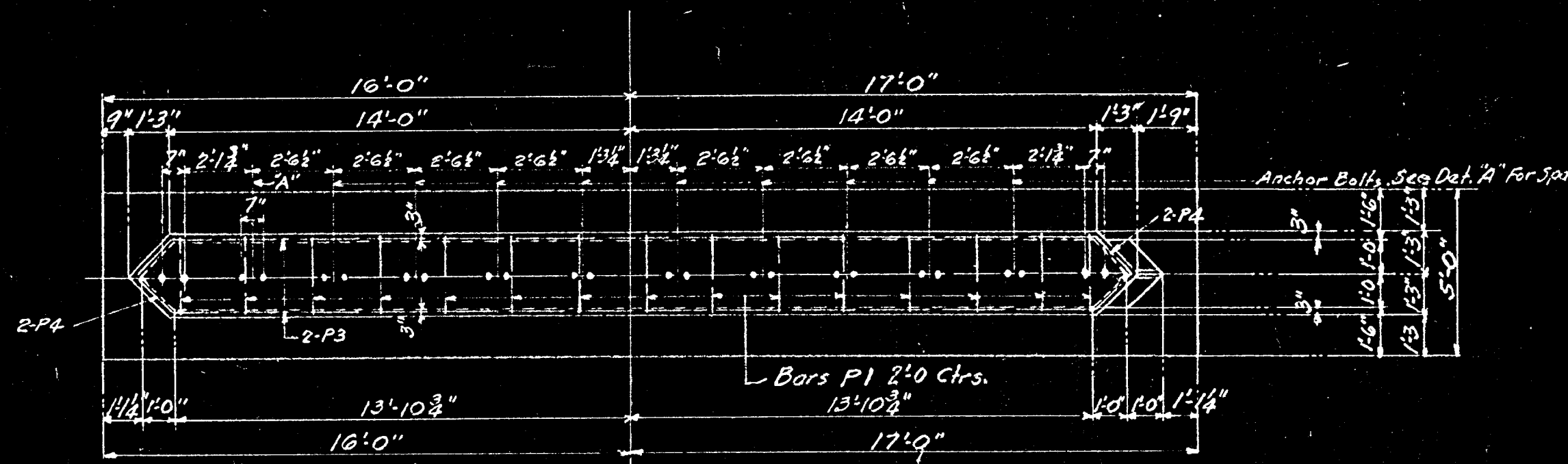
Note:
All bars to be bent in field except DI bars.

Note:
44-Timber Piles 20' by 24'
5-New 12 I's @ 31.3" x 32.6" g. Rejt.
Const. Notes on Sheet E

No.	Mark	Size	Length	Location
4	F1	1/2"	33'-0"	Fig.
12	F2	do.	10'-0"	"
833	F3	do.	4'-9"	"
4	F4	do.	16'-0"	"
149	D1	5/8"	5'-5"	Downalls Bent
12	V1	5/8"	12'-3"	Abut. Vert.
86	V2	do.	10'-11"	"
3	V3	do.	12'-0"	do
3	V4	do.	11'-6"	do
6	V5	do.	11'-9"	do
3	V6	do.	11'-0"	do
6	V7	do.	11'-3"	do
3	V8	do.	10'-6"	do
6	V9	do.	10'-9"	do
3	V10	do.	10'-0"	do
6	V11	do.	10'-3"	do
6	V12	do.	9'-9"	do
3	V13	do.	9'-6"	do
6	V14	do.	9'-6"	do
5	H1	1/2"	26'-0"	Abut. Horiz.
1	H2	do.	23'-0"	do
3	H3	do.	10'-6"	do
3	H4	do.	11'-6"	do
1	H5	do.	24'-0"	do
5	H6	do.	24'-6"	do
6	H7	do.	16'-6"	do
68	do	do	13'-0"	Deck
22	do	do	18'-4"	"

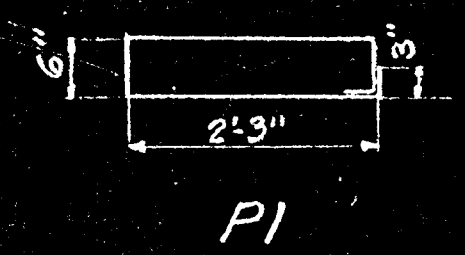
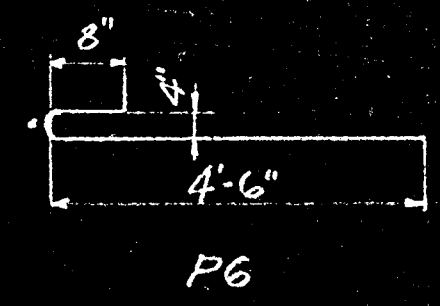
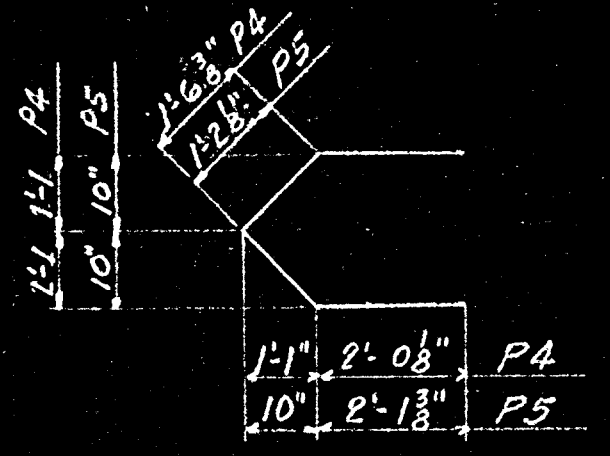
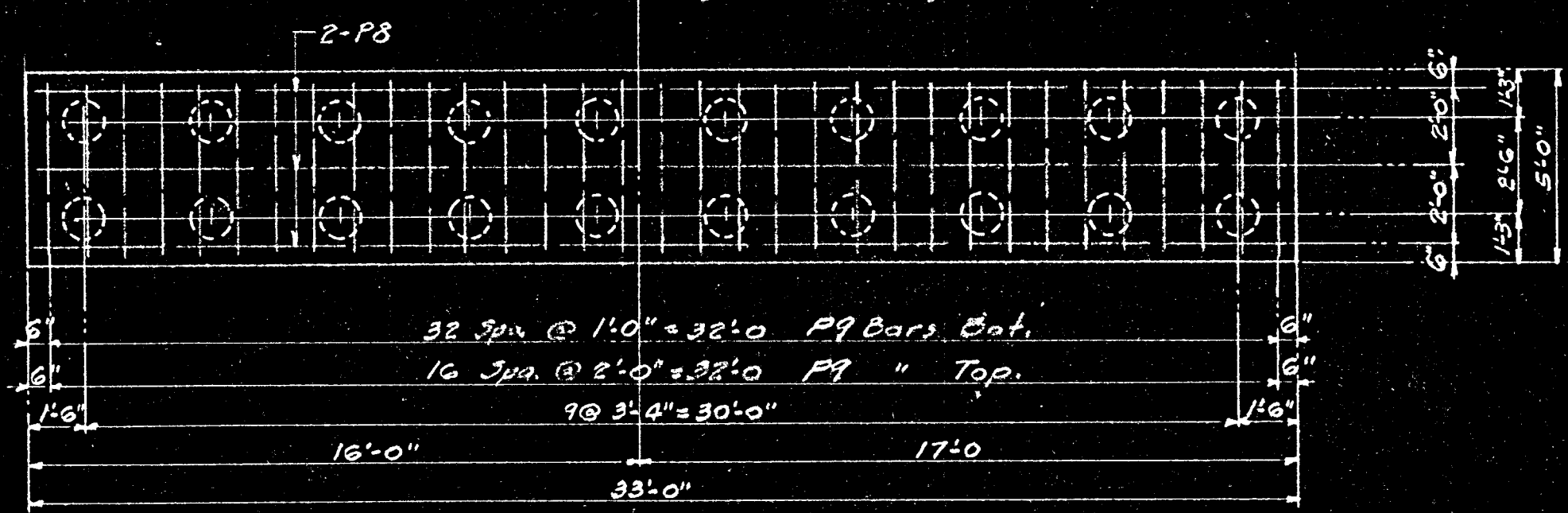


PLAN FOR REBUILDING OF BRIDGE
LOCATION: Sec 10 - Anoka Twp. - Anoka Co.
H.E. Blewett County Engineer.



SEC. ON \perp OF PIER

Note: 20-Pcs. Piling 20'-0" lg. Req'd.



REINFORCING BARS.				
No.	Mark	Size	Length	Shape
15	P1	5/8"	6'-0"	Bent.
60	P2	3/4"	12'-0"	Str.
4	P3	3/4"	28'-0"	"
4	P4	5/8"	7'-1"	Bent.
12	P5	do.	6'-7"	"
60	P6	3/4"	5'-6"	"
12	P7	1/2"	28'-0"	Str.
6	P8	do.	32'-0"	"
50	P9	do.	4'-6"	"
16	Bolts, Ctsk. Hd. Hex Nuts.	5/8" x 2"		
46	Lock Washers for 3/4" Bolts.			

CONSTRUCTION NOTES:
 The Minnesota Highway Department's "Specifications for Highway Construction" dated July 1st 1938 shall apply on this work unless otherwise specifically noted.
 All concrete shall be Grade "A".
 All edges of concrete to be finished to a 3" bend.
 Shop Paint: One coat Red Lead as per M.H.D. Spec. 3501
 Field Paint: One coat of Black Paint as per M.H.D. Spec. 3504
 Old steel to be reused, is to be thoroughly cleaned and spot painted with One coat Red Lead Shop Paint as per M.H.D. Spec. 3501 before Black Field Coat can be applied.

PLAN FOR REBUILDING OF BRIDGE.
 PIER DETAILS.
 LOCATION: Sec. 10 - Anoka Twp. - Anoka Co.
 H.E. Blewett County Engineer.