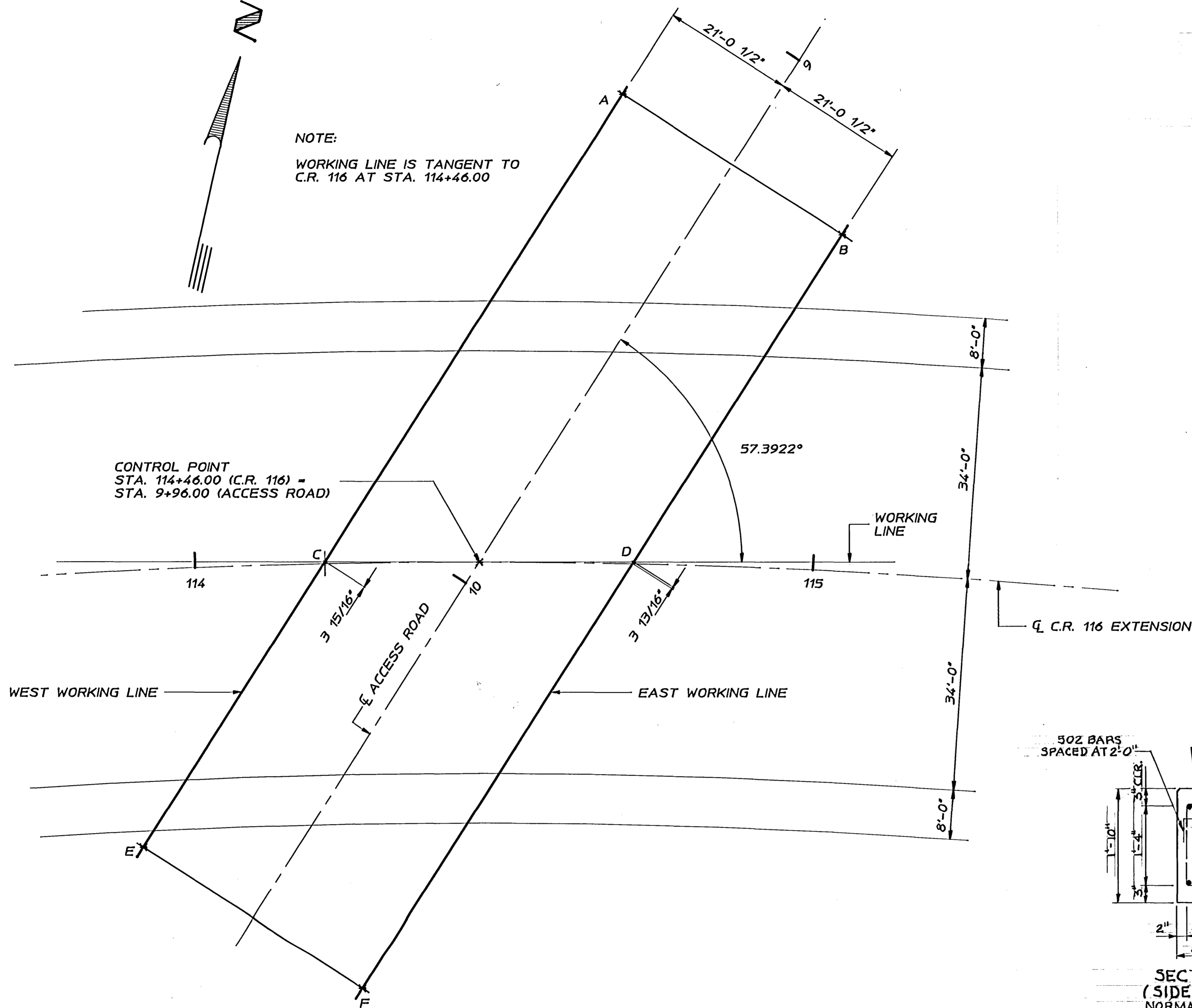
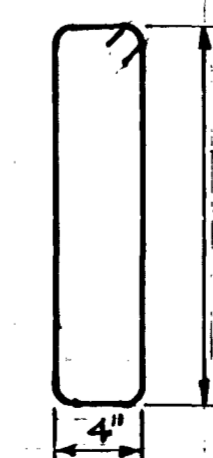
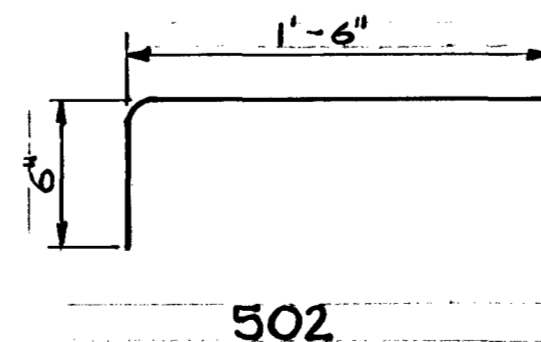
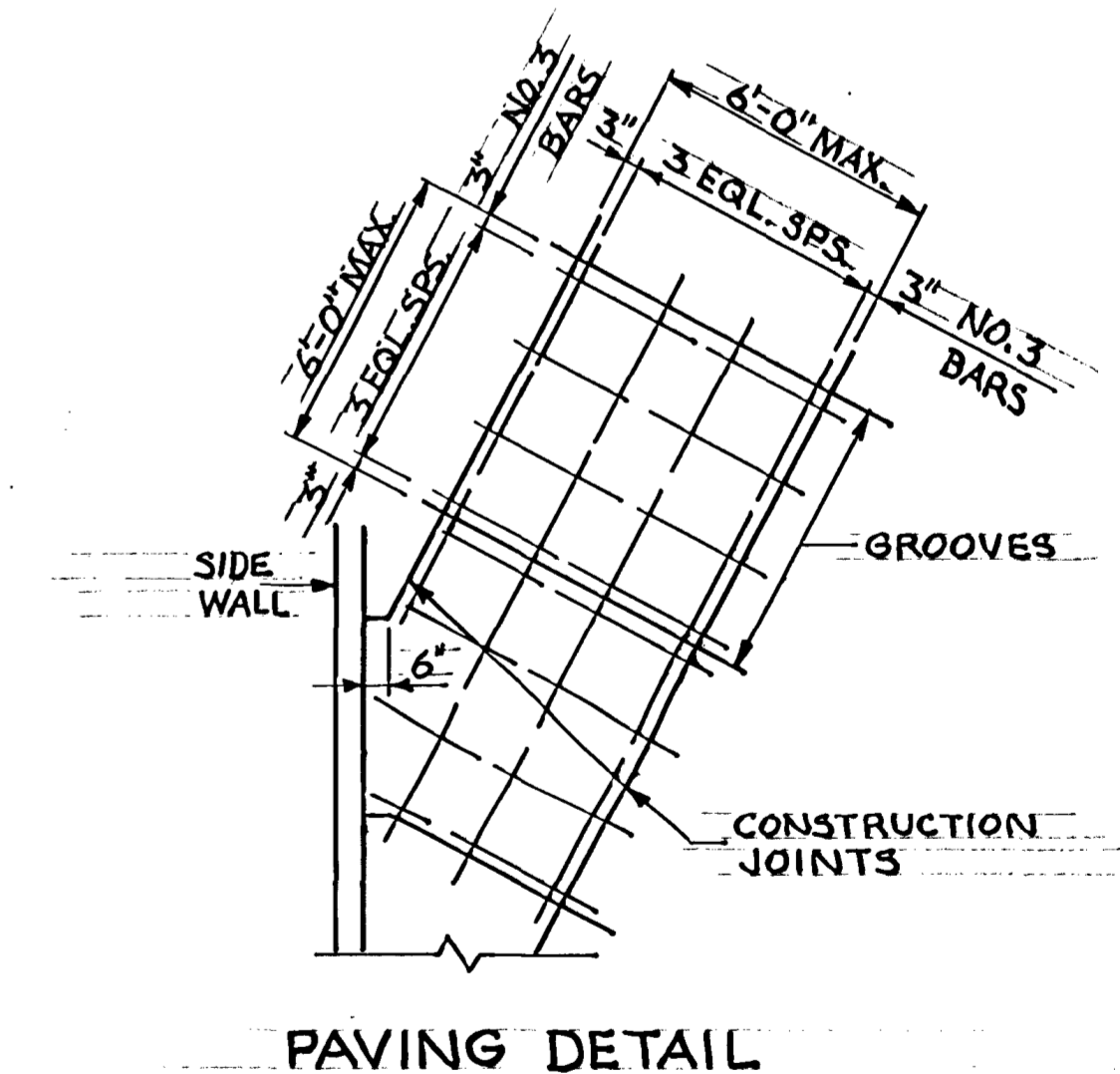
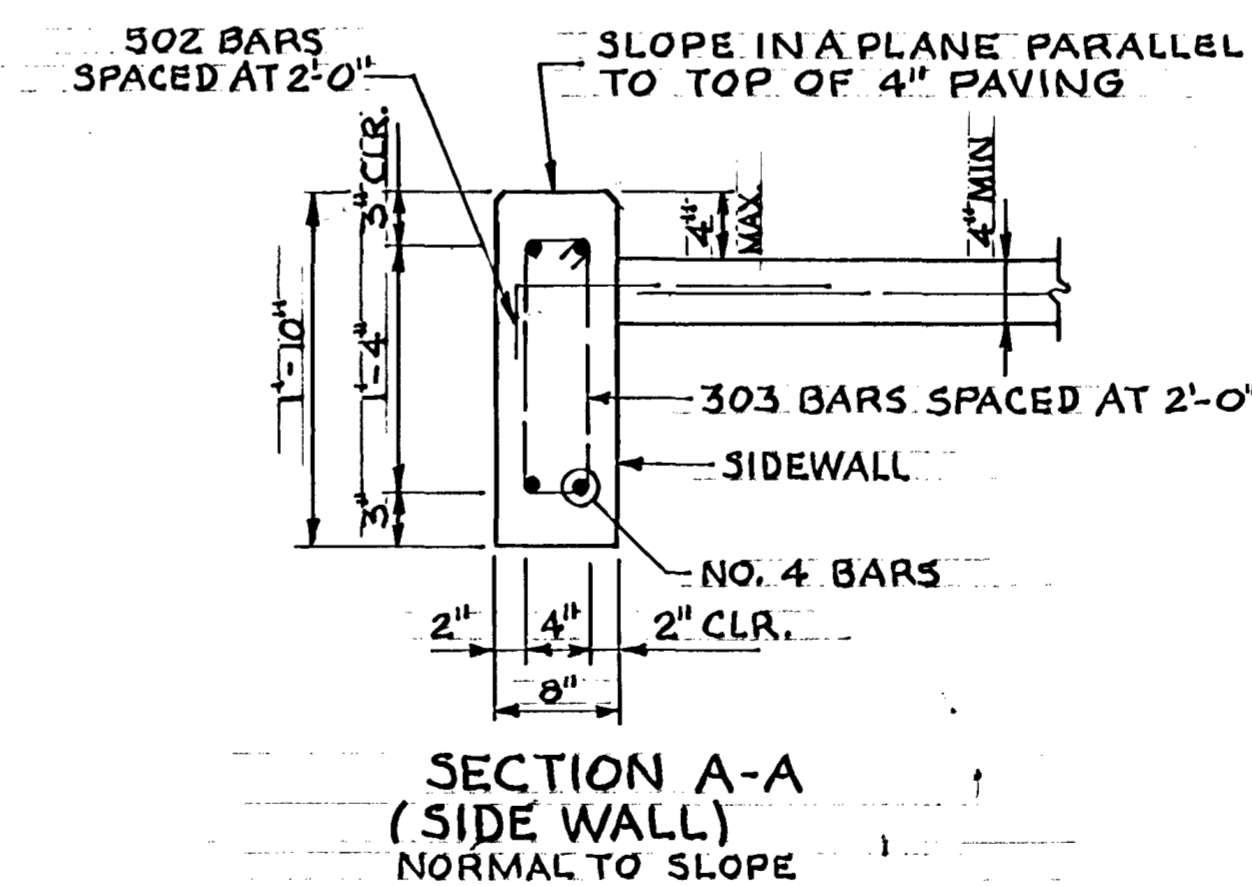
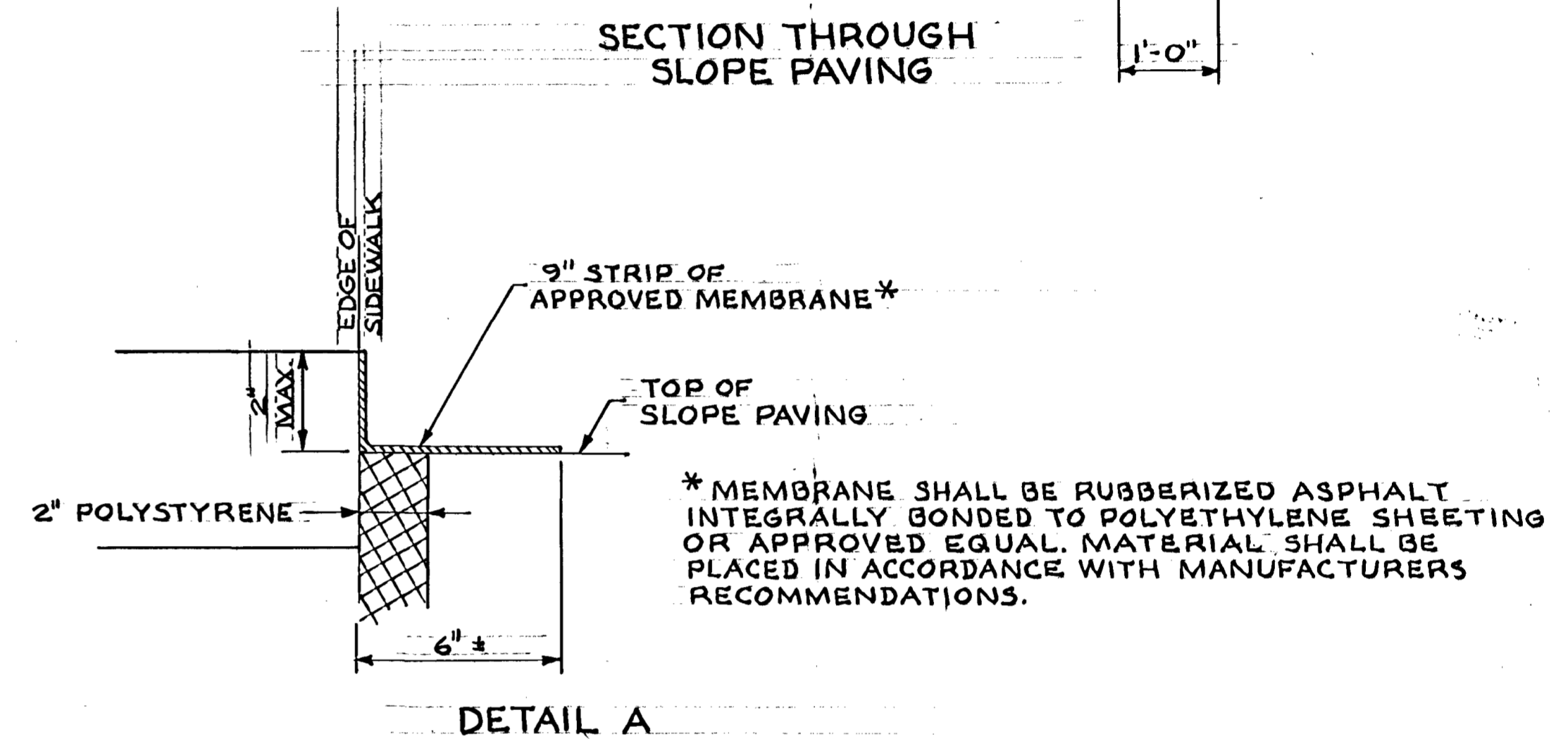
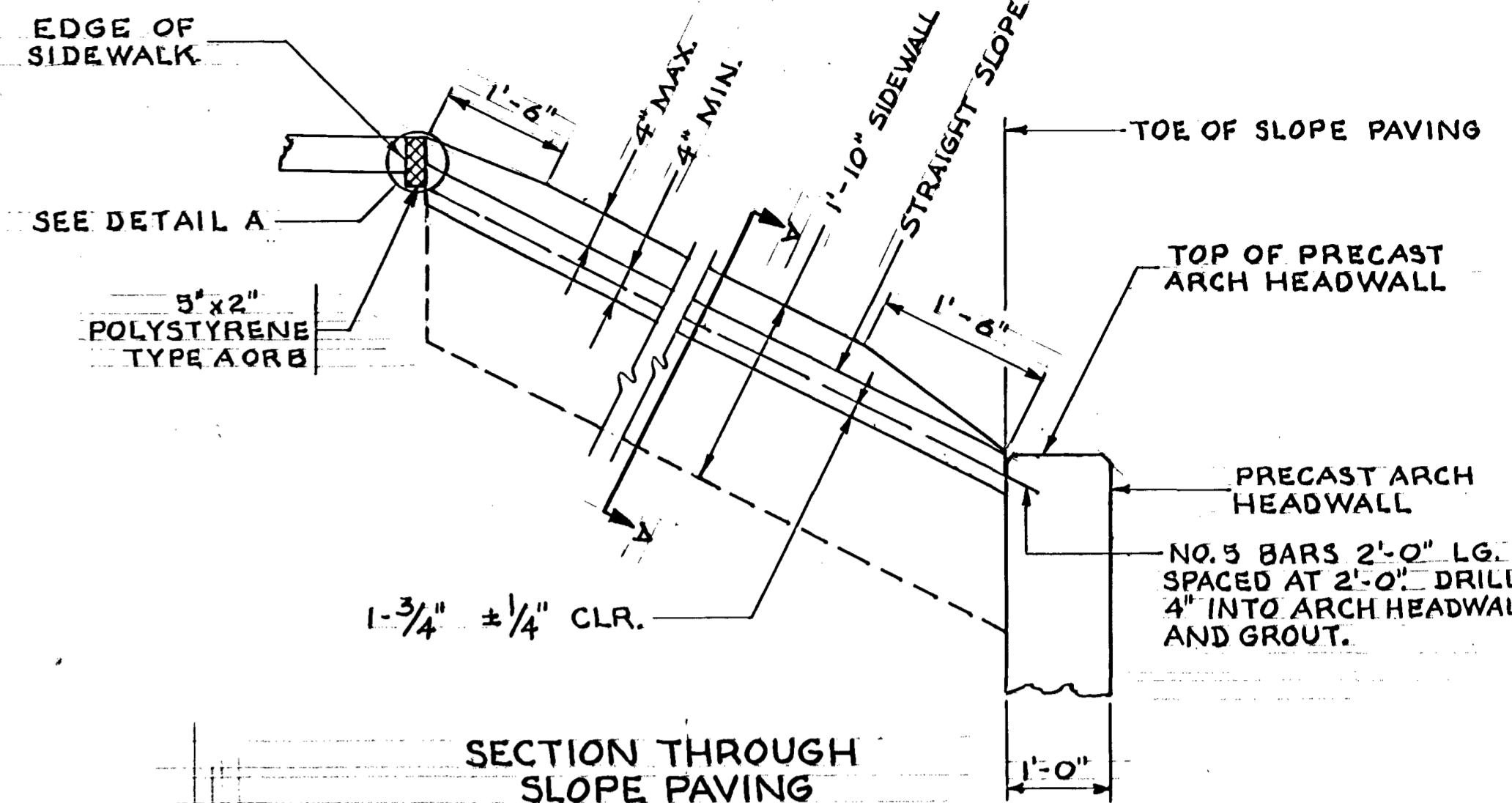


NOTE:
WORKING LINE IS TANGENT TO
C.R. 116 AT STA. 114+46.00



LAYOUT SHOWING WORKING POINTS
SCALE: 1"=10'-0"

DIMENSIONS BETWEEN WORKING POINTS							
POINT	STATION	A	B	C	D	E	F
A	114+67.79		42.09	89.46	75.38		150.02
B	115+02.06			98.87	62.54	150.02	
C	114+21.02				49.96	54.54	68.89
D	114+70.98					91.69	81.46
E	113+89.40						42.09
F	114+23.88						



NOTES:
FOR LIMITS OF SLOPE PAVING
SEE PG. 80.

MINNESOTA DEPARTMENT
OF TRANSPORTATION

BRIDGE NO. 96834

BRIDGE LAYOUT
& SLOPE PAVING DETAILS

APPROVED:

C.P. 88-09-116

SHEET 22 OF 100 SHEETS

96834 RMT
BDW