

MINN. PROJ. NO.
 MINN. PROJ. NO.

MINNESOTA DEPARTMENT OF TRANSPORTATION

ANOKA COUNTY

CONSTRUCTION PLAN FOR MAINTENANCE OF BRIDGES: 02522, 02526, 02553, 02527, 02520.

LOCATED AT: CR 3 (COON RAPIDS BLVD) OVER CSAH 1 (EAST RIVER ROAD), COON RAPIDS: BRIDGE 02522
 CSAH 7 (ROANOKE STREET NW) OVER RUM RIVER, ANDOVER: BRIDGE 02526
 CSAH 11 (NORTHDALE BLVD.) OVER COON CREEK, COON RAPIDS: BRIDGE 02553
 CSAH 14 (MAIN STREET) OVER CHANNEL BTWN GEORGE WATCH & PELTIER LAKES, LINO LAKES: BRIDGE 02527
 CSAH 51 (UNIVERSITY AVENUE EXTENSION) OVER SAND CREEK, COON RAPIDS: BRIDGE 02520

GOVERNING SPECIFICATIONS

THE 1988 EDITION OF THE MINNESOTA DEPARTMENT OF TRANSPORTATION "STANDARD SPECIFICATIONS FOR CONSTRUCTION" AS AMENDED BY SUPPLEMENTAL SPECIFICATIONS, DATED MAY 2, 1994 SHALL GOVERN.

SHEET NO.	INDEX	DESCRIPTION
1	TITLE SHEET AND LOCATION MAP	
1A	PLAN BRIDGE 02553	
1B	SPREADER BEAM DETAIL 02527	
1C	PLAN BRIDGE 02520	
1D	TRAFFIC CONTROL BRIDGE 02526	

THIS PLAN CONTAINS 5 SHEETS
 DESIGN DESIGNATION

I HEREBY CERTIFY THAT THIS PLAN WAS PREPARED BY ME OR UNDER MY DIRECT SUPERVISION AND THAT I AM A DULY REGISTERED PROFESSIONAL ENGINEER UNDER THE LAWS OF THE STATE OF MINNESOTA.

DATE 3/20/95 REG. NO. 21429 ENGR. Steven P. Jensen
 DESIGN SQUAD HOLM

Recommended for Approval Douglas M. Fischer 3/21/1995
 Recommended for Approval James R. Lemke 3/21/1995

Approved 3/21, 1995 James R. Lemke
 ANOKA COUNTY ENGINEER

PLAN SYMBOLS

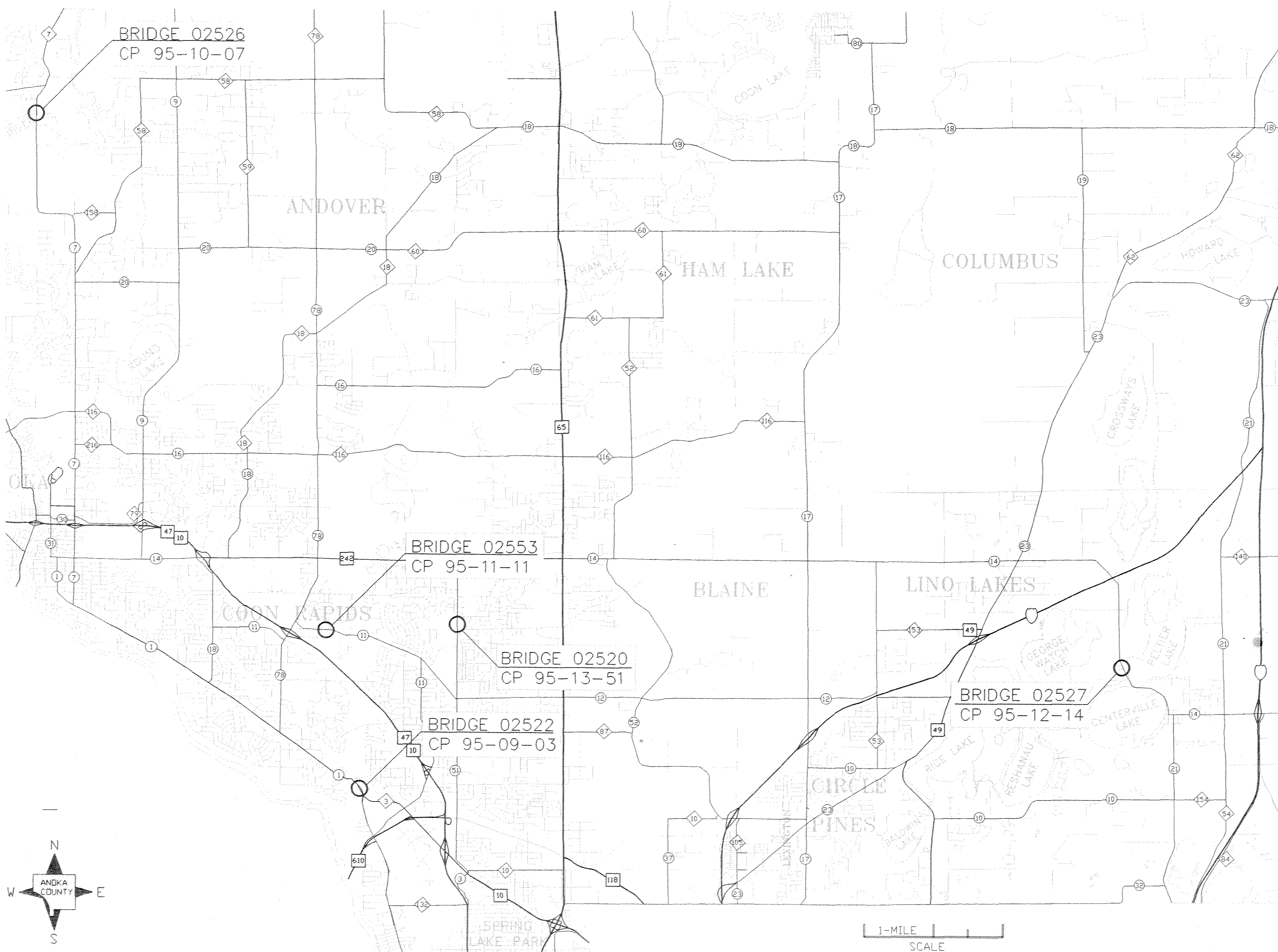
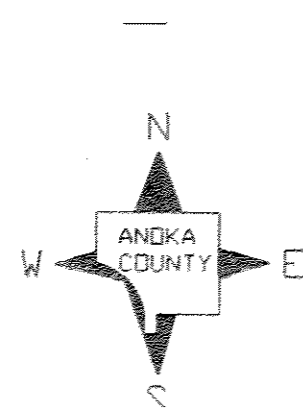
- COUNTY LINE
- TOWNSHIP OR RANGE LINE
- SECTION LINE
- QUARTER LINE
- SIXTEENTH LINE
- SIGHT OF WAY LINE
- SLOPE CASEMENT
- PRESENT RIGHT OF WAY
- PROPERTY LINE
- CORPORATE OR CITY LIMITS
- RETAINING WALL
- RAILROAD
- RAILROAD RIGHT OF WAY
- RIVER OR CREEK
- DRAINAGE DITCH
- CULVERT
- DROP INLET
- RAILROAD
- GARDED WIRE FENCE
- WOODEN WIRE FENCE
- CHAIN LINK FENCE
- WOOD FENCE
- STONE WALL OR FENCE
- HEDGE

- LOWLAND
- TIMBER
- CRUSHED BRUSH
- NURSER
- CATTLE GUARD
- OVERPASS (Highway Over)
- UNDERPASS (Highway Under)
- BRIDGE
- BUILDING (One Story Frame)
- T-FRAME C-CONCRETE
- S-STONE T-TILE
- B-BRICK ST-STUCCO
- RAILROAD CROSSING BELL
- RAILROAD CROSSING GATE
- MANHOLE
- CATCH BASIN
- FIRE HYDRANT
- CAST IRON MONUMENT
- IRON PIN
- GRAVEL PIT
- SAND PIT
- BORROW PIT
- ROCK QUARRY

UTILITY SYMBOLS

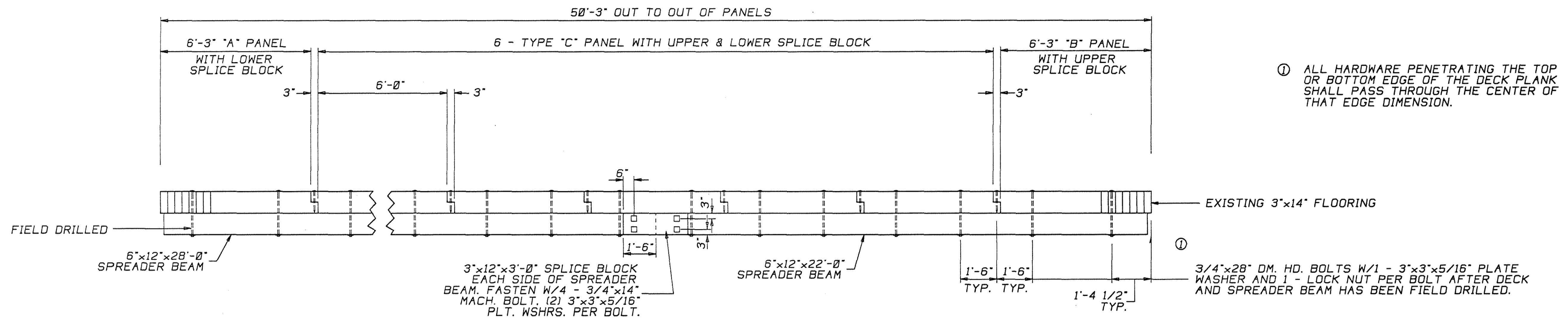
- POWER POLE LINE
- TELEPHONE OR TELEGRAPH POLE LINE
- JOINT TELEPHONE & POWER ON POWER POLES
- ON TELEPHONE POLES
- ANCHOR
- STEEL TOWER
- STREET LIGHT
- PEDESTAL (Cable Terminal)
- GAS MAIN
- WATER MAIN
- TELEPHONE CABLE IN CONDUIT
- ELECTRIC CABLE IN CONDUIT
- TELEPHONE MANHOLE
- ELECTRIC MANHOLE
- BURIED TELEPHONE CABLE
- BURIED ELECTRIC CABLE
- AERIAL TELEPHONE CABLE
- SEWER (Sanitary or Storm)
- SEWER MANHOLE

SCALES

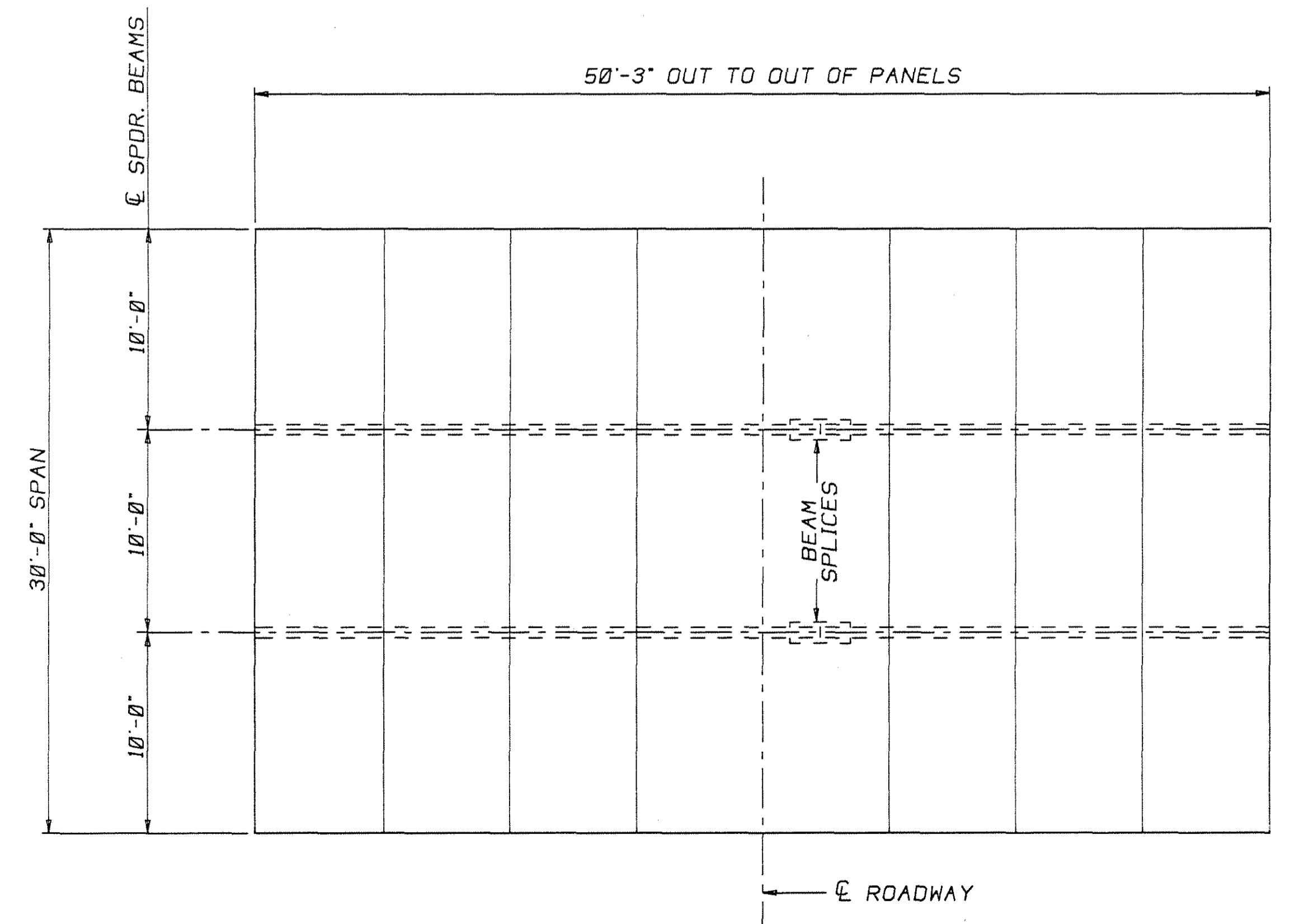


1-MILE SCALE

COUNTY PROJ. NO. 95-07-00
 STATE PROJ. NO. SHEET NO. 1 OF 5 SHEETS



SECTION AT SPREADER BEAM



PLAN

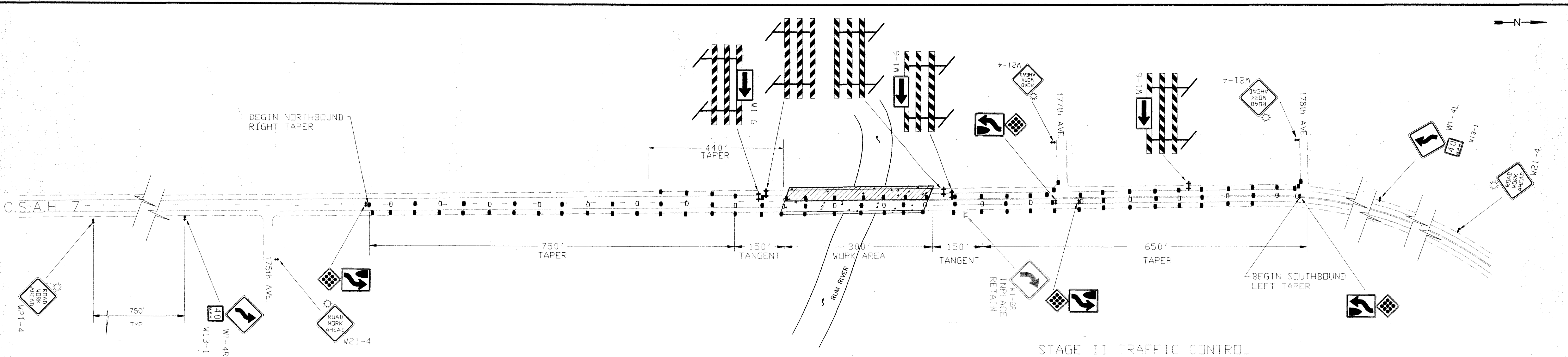
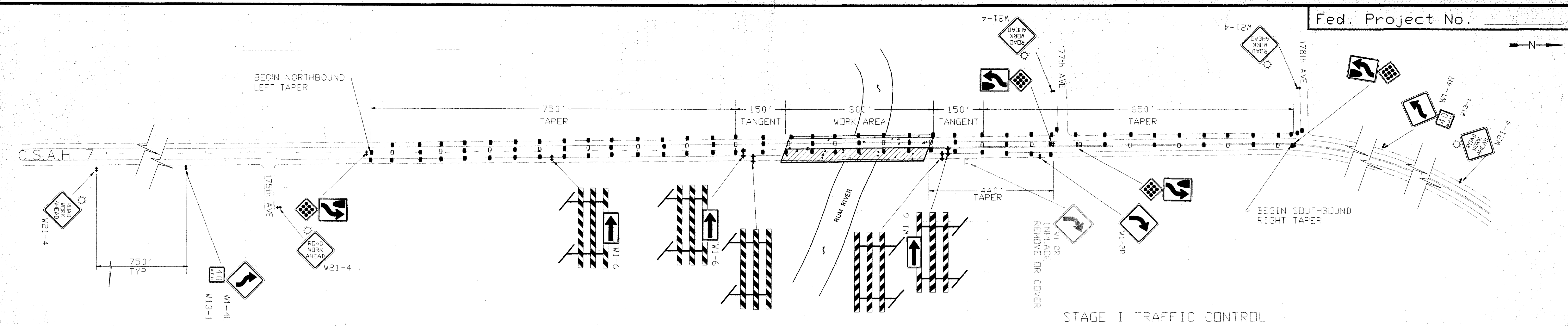
- NOTES:
- ① ALL TIMBER TO BE #1 DOUGLAS FIR CREOSOTE TREATED
 - ② ALL FASTENERS A307 GALVANIZED

S

ANOKA COUNTY, MINNESOTA
 MAIN STREET BRIDGE
 BRIDGE NO. 02527

30'-0" TRTD. TMBR. SPAN (EXISTING)
 50'-3" OUT TO OUT OF DECK
 SPREADER BEAM DETAIL

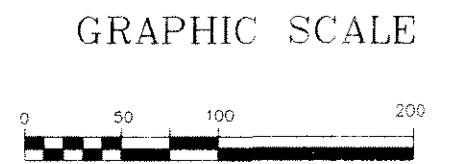
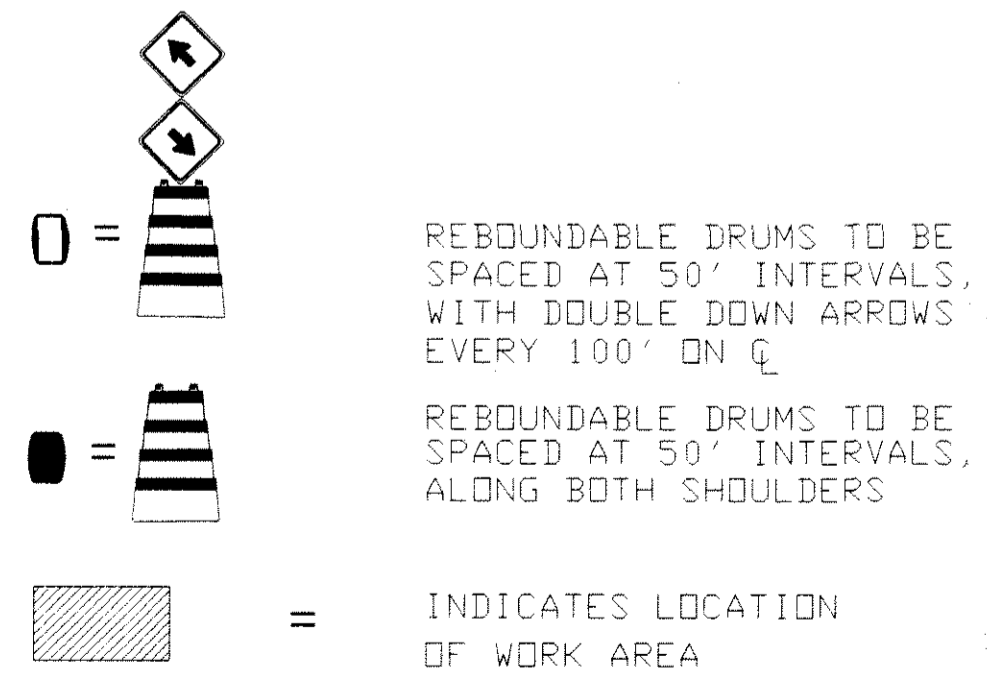
WHEELER CONSOLIDATED, INC.
 DATE: 1/27/95 DWN: WEH
 SHEET 10 OF 5 SHEETS CHK: RMT



M.U.T.C.D. CODE	SIZE	INSERT	QTY.		M.U.T.C.D. CODE	SIZE	INSERT	QTY.		M.U.T.C.D. CODE	SIZE	INSERT	QTY.	
			STAGE I	STAGE II				STAGE I	STAGE II				STAGE I	STAGE II
W21-4	48" x 48"	ROAD WORK AHEAD	.5	.5	R4-7	24" x 30"	RIGHT TURN	.4	.4	W1-2R	48" x 48"	RIGHT TURN	.1	.0
			.5	.5	X4-2	18" x 18"	ROAD WORK AHEAD							
W1-4R	48" x 48"	RIGHT TURN	.1	.1	W1-6L	48" x 24"	BARRICADE	.2	.2	W14-X7	18" x 18"	RIGHT TURN	.19	.19
W13-1	24" x 24"	40 MPH			TYPE III 8 FT.		BARRICADE	.3	.3	REBOUNDBLE DRUM			.19	.19
W1-4L	48" x 48"	LEFT TURN	.1	.1	W1-6R	48" x 24"	BARRICADE	.1	.1	REBOUNDBLE DRUM			.90	.90
W13-1	24" x 24"	40 MPH			TYPE III 8 FT.		BARRICADE	.2	.2					

STANDARD TRAFFIC CONTROL NOTES

- 1) ALL BARRICADES SHALL BE PROPERLY WEIGHTED WITH SANDBAGS.
- 2) ALL BARRICADES SHALL HAVE REFLECTIVE MATERIAL ON BOTH SIDES.
- 3) ALL BARRICADE MARKINGS SHALL BE SLANTED IN ACCORDANCE WITH THE MINNESOTA MANUAL OF UNIFORM TRAFFIC CONTROL DEVICES.
- 4) ALL TRAFFIC CONTROL DEVICES SHALL CONFORM TO THE MOST RECENT EDITION OF THE MINNESOTA MANUAL ON UNIFORM TRAFFIC CONTROL DEVICES, INCLUDING APPENDIX 'B', DATED NOVEMBER 1992.
- 5) ADDITIONS OR CHANGES TO THIS PLAN MAY BE MADE AS DETERMINED BY THE ENGINEER.



REVISIONS	DATE	BY