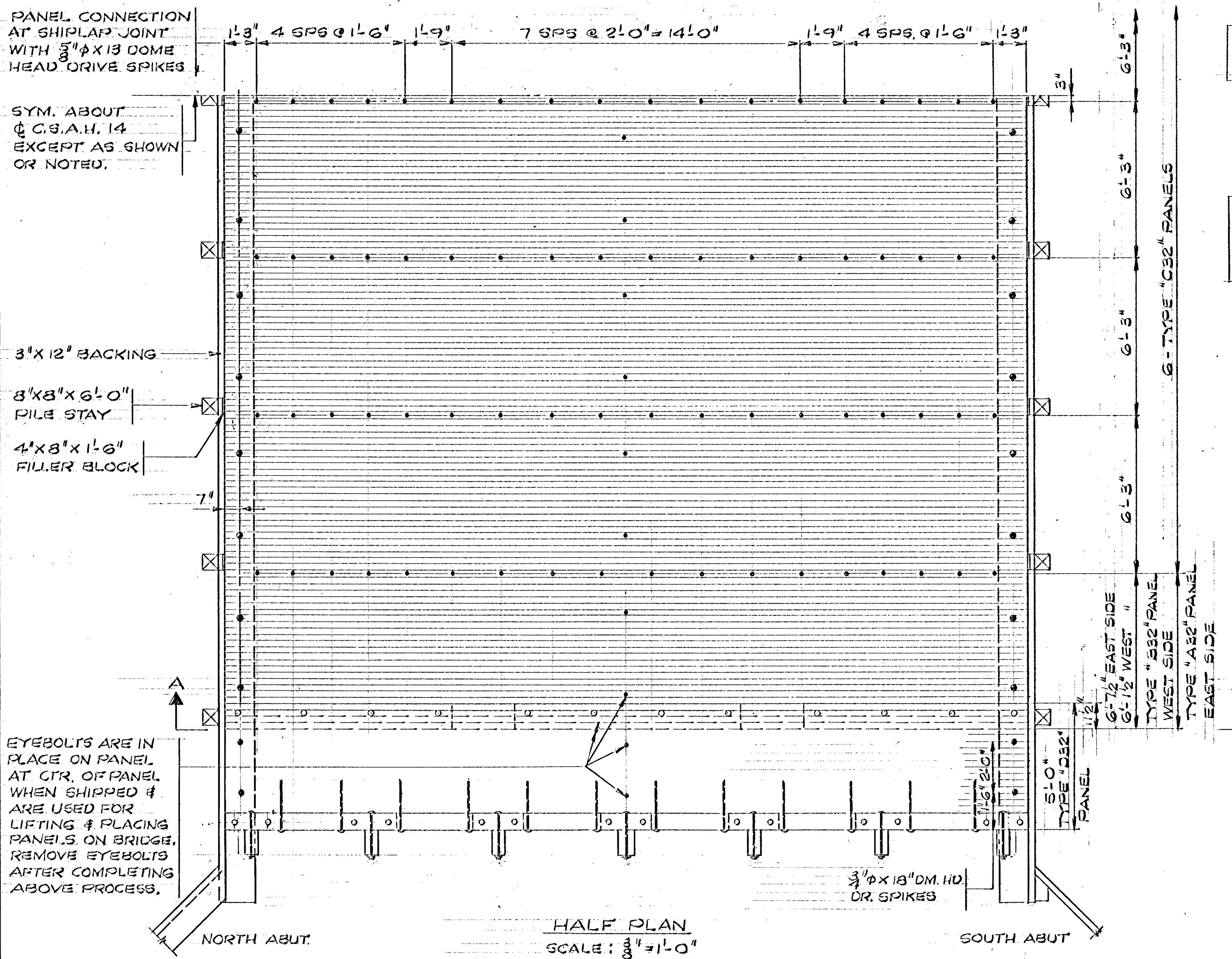


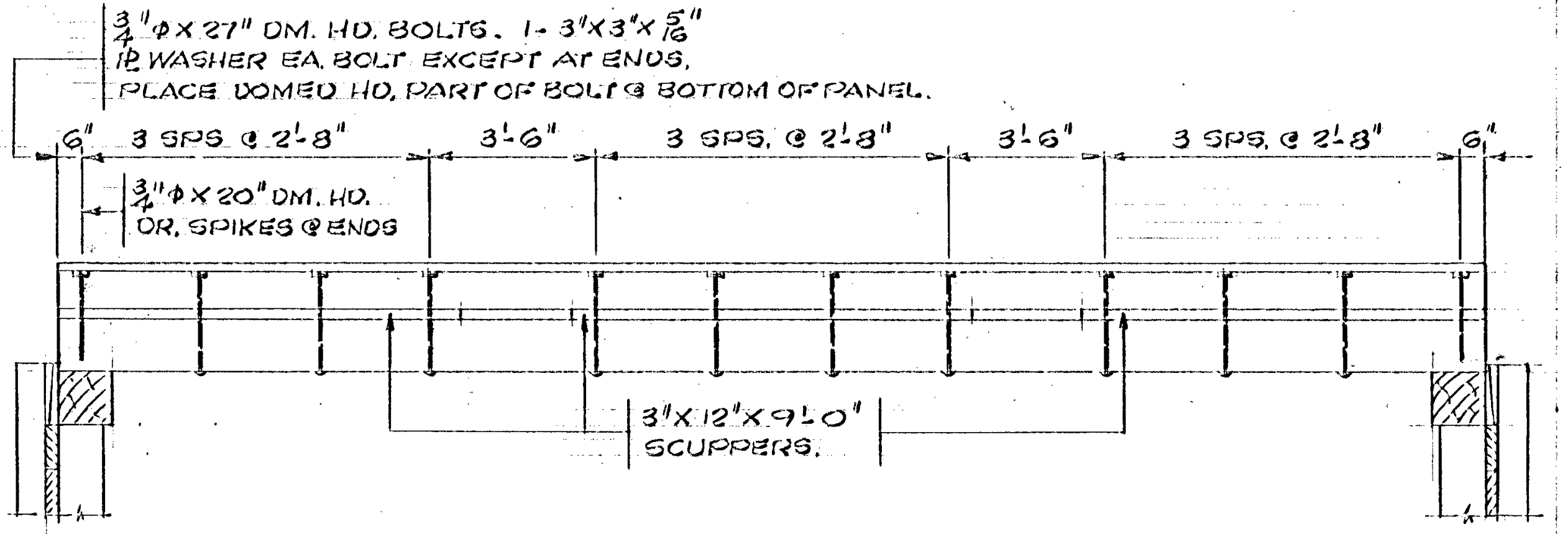
NOTE:
 CONTRACTOR TO ASSEMBLE SCUPPER AND CURB IN PLACE, THEN MARK AND DRILL THRU SIDEWALK PANEL, DISASSEMBLE, GROOVE PANEL FOR SPLIT RING CONNECTOR, REASSEMBLE AND BOLT DOWN.
 CURBS TO BE PLACED SO TAGS SHOW FROM $\frac{1}{2}$ OF ROADWAY. MATCH CURBS & SCUPPERS IN FIELD PER SHOP PLACED TAG NUMBERS.

CONSTRUCTION NOTES
 PANEL "A32" IS THE FIRST TO BE PLACED IN ITS FINAL POSITION ON THE CAPS AND THEN $\frac{1}{16}$ " HOLES ARE TO BE DRILLED THRU DECK & INTO CAP AT LOCATIONS SHOWN. DRIVE THE $\frac{3}{4}$ " \times 22" DOME HEAD DRIVE SPIKE IN THIS SECTION. NEXT PLACE PANEL "C32" SO UPPER SPLICE BLOCK IS OVER SPLICE BLOCK ON PANEL "A32" AND DRAW TIGHT TOGETHER WITH MIN. 3 TON LEVER HOIST. THEN DRILL HOLES IN LOWER SPLICE BLOCK AND DRIVE DOME HEAD DRIVE SPIKES. DRILL HOLES IN CAPS AND DRIVE THE $\frac{3}{4}$ " \times 22" DOME HEAD DRIVE SPIKES. THEREAFTER SUCCESSIVELY PLACE PANELS "C32" & PANEL "B32" IN THE SAME MANNER USING LEVER HOIST TO DRAW EACH UNIT UP TIGHT.
 ALL HOLES WHERE DOME HEAD DRIVE SPIKES ARE USED TO BE $\frac{1}{16}$ " ϕ SMALLER THAN SPIKE SIZE.
 FASTEN PANEL "D32" TO PANELS "A32" & "B32" AND ABUTMENT AS SHOWN ON SHEETS 3 & 4.

PART ELEVATION



HALF PLAN
 SCALE: $\frac{3}{8}$ " = 1'-0"



SECTION A-A

PLANS PREPARED BY
 ROBERT E. ERICKSON ENGINEERING CO.
 3340 REPUBLIC AVE.
 ST. LOUIS PARK, MINN.

C.S.A.H. 14 ANOKA COUNTY
 STATE OF MINNESOTA
 DEPARTMENT OF HIGHWAY

BRIDGE NO. 02527
 SUPERSTRUCTURE DETAILS

APPROVED 4-15-15