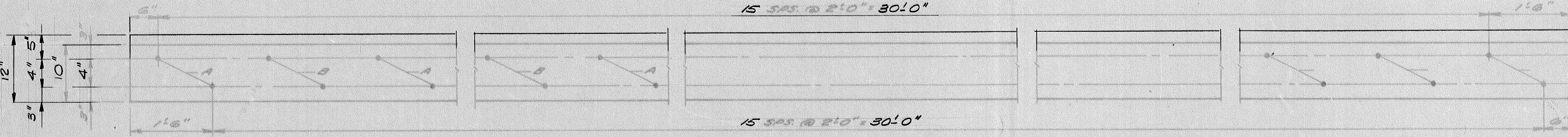


NOTE:
SPACES MARKED "X"
IN UPPER HOLES.

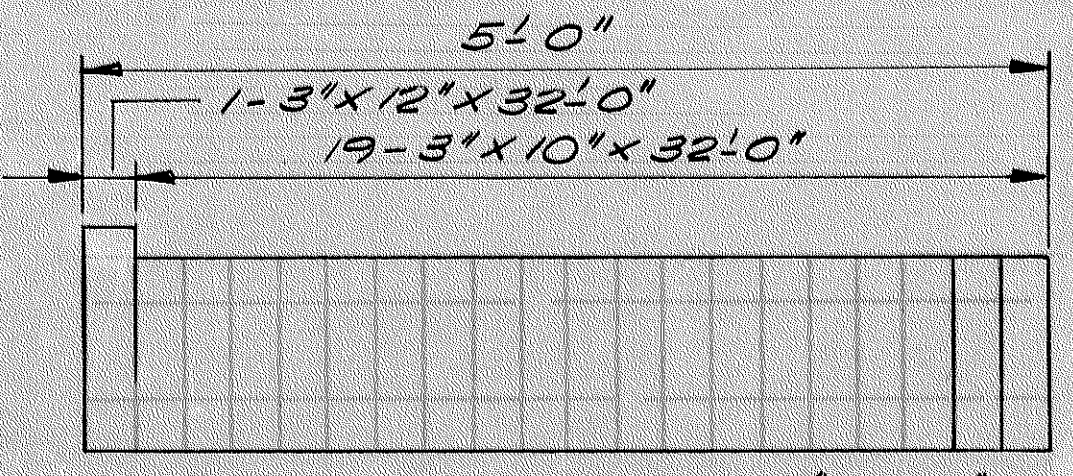
8 LINES OF 2 PLANK UNITS
TO BE NAILED AS INDICATED
TO MAKE 5'-0" SIDEWALK
UNIT.



DETAIL OF 3" x 10" & 3" x 12" PLANK BORING

SHOP FABRICATION OF TIMBER PANELS
LAMINATE 3" x 10" & 3" x 12" PLANKS USING 3/8" x 5 1/2" x 11"
DRY RING SHANK NAILS. FABRICATE 8 PLANKS
FIRST AS SHOWN AND THEN ADD 2 PLANK SEC-
TIONS TO MAKE A 5'-0" WIDE SECTION.

PLANK TO BE PREBORED AS PER DETAIL BE-
FORE BEING TREATED. SET RING SHANK NAILS
IN POSITION IN PREBORED HOLES OF 2 PLANK
UNITS. AIR HAMMER TO BE USED TO DRIVE THE
NAILS SO PLANKS ARE DRIVEN TIGHT TOGETHER
TO MAKE DIMENSION OF 5'-0" WIDE UNIT.
ALL PLANK ARE SURFACED ONE SIDE SO THAT
THE UNIT WILL BE 5'-0" WIDE AFTER FABRICATING
THE PANEL. PLANKS TO BE CREOSOTE TREATED AS PER
M.H.D. 3491.



TREATED TIMBER FOR PANELS		
NO. REQUIRED	ITEM	M. E. M. FOR
D32		D32
19	3" x 10" S1S-32' LB.	1.52
1	3" x 12" S1S-32' LB.	.10
	TOTAL M.E.M.	1.62

GALVANIZED HARDWARE FOR PANELS		
NO. REQUIRED	ITEM	WEIGHT FOR
D32		D32
144	3/8" RING SHANK NAILS	58
32	3/8" S1S " " "	7
	TOTAL WEIGHT	65

PREFAB TIMBER
PANEL DETAILS
APPROVED: 4-15-75
BRIDGE
NUMBER
02527