

# STATE OF MINNESOTA DEPARTMENT OF HIGHWAYS

CONSTRUCTION PLANS FOR COON RAPIDS BLVD. RIGHT OF WAY (FOLEY BLVD. TO T.H. 47)

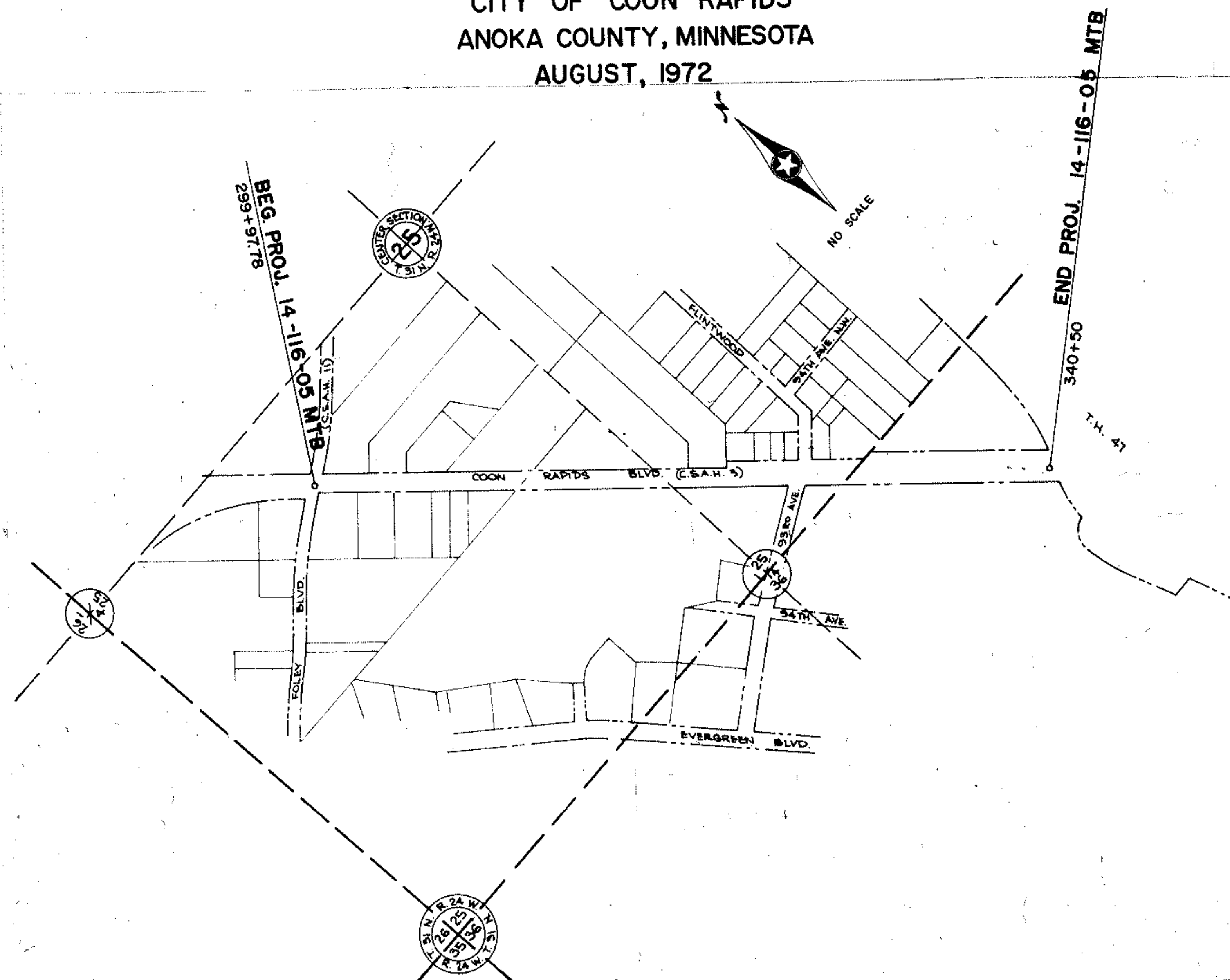
MUNICIPAL TURNBACK PROJECT NO. 14-116-05 MTB

CITY OF COON RAPIDS  
ANOKA COUNTY, MINNESOTA  
AUGUST, 1972

### SPECIFICATIONS

STATE OF MINNESOTA, DEPARTMENT OF HIGHWAYS "STANDARD SPECIFICATIONS FOR HIGHWAY CONSTRUCTION" DATED JANUARY 1, 1972 SHALL GOVERN.

CONVENTIONAL SIGNS	
STATE LINE	SPRINGS
COUNTY LINE	MARSH
TOWNSHIP OR RANGE LINE	TIMBER
SECTION LINE	ORCHARD
QUARTER LINE	BRUSH
SIXTEENTH LINE	NURSERIES
RIGHT-OF-WAY LINE	CATCH BASIN
PRESENT RIGHT-OF-WAY LINE	MANHOLE
CONTROL OF ACCESS LINE	FIRE HYDRANT
PROPERTY LINE (Except Land Lines)	STREET LIGHT
VACATED PLATTED PROPERTY	RAILROAD CROSSING SIGN
CORPORATE OR CITY LIMITS	RAILROAD CROSSING BELL
TRUNK HIGHWAY CENTER LINE	ELECTRIC WARNING SIGN
RETAINING WALL	CROSSING GATE
RAILROAD	CATTLE GUARD
RAILROAD RIGHT-OF-WAY LINE	OVERPASS (Highway Over)
RIVER OR CREEK	UNDERPASS (Highway Under)
DRY DRAIN	BRIDGE
DRAINAGE DITCH	BUILDING (One Story Frame)
ELECTRIC POWER LINE	F-FRAME C-CONCRETE
TELEPHONE OR TELEGRAPH LINE	S-STONE T-TILE
JOINT TELEPHONE AND POWER	B-BRICK ST-STUCCO
CONDUIT	IRON PIPE OR ROD
TELEPHONE CABLE-AERIAL	MONUMENT (STONE, CONCRETE, OR METAL)
TELEPHONE CABLE-UNDERGROUND	WOODEN HUB
POWER CABLE-UNDERGROUND	GRAVEL PIT
GAS MAIN	SAND PIT
CULVERT	BORROW PIT
DROP INLET	ROCK QUARRY
GUARD RAIL	MEANDER CORNER
BARBED WIRE FENCE	
WOVEN WIRE FENCE	
CHAIN LINK FENCE	
RAILROAD SNOW FENCE	
STONE WALL OR FENCE	
HEWED	
WATER PIPE	
SEWER PIPE	
DRAIN TILE	



REVISIONS		
DATE	SHEET NO.	REVISED BY

FROM	JUNCTION FOLEY BLVD. (C.S.A.H. 19)		
TO	JUNCTION T.H. 47		
GROSS LENGTH	4050 FEET	0.77	MILES
BRIDGES LENGTH	0 FEET	0	MILES
EXCEPTIONS LENGTH	0 FEET	0	MILES
NET LENGTH	4050 FEET	0.77	MILES

DESIGN: 9 TON, A-3 SOIL  
ANTICIPATED A.D.T. 12000-24000  
H.C.A.D.T. OVER 1100  
DESIGN SPEED 50 M.P.H.

I HEREBY CERTIFY THAT THIS PLAN WAS PREPARED BY ME OR UNDER MY DIRECT SUPERVISION AND THAT I AM A DULY REGISTERED PROFESSIONAL ENGINEER UNDER THE LAWS OF THE STATE OF MINNESOTA.  
*Thomas J. Schell*  
DATE: 8/14/72 FILE NO. 9075

INDEX	
Sheet No.	Description
1	TITLE SHEET
2-4	ALIGNMENT & TOPOG.

Recommended for Approval	CITY ENGINEER	Date
Recommended for Approval	DIST. STATE AID ENGINEER	Date
Recommended for Approval	STATE AID ENGINEER	Date