

STATE OF MINNESOTA DEPARTMENT OF HIGHWAYS

CONSTRUCTION PLANS FOR COON RAPIDS BLVD. GRADING,
BITUMINOUS SURFACING, & DRAINAGE
MUNICIPAL TURNBACK PROJECT NO. 14-116-06 MTB

CITY OF COON RAPIDS
ANOKA COUNTY, MINNESOTA
OCTOBER, 1972

SPECIFICATIONS

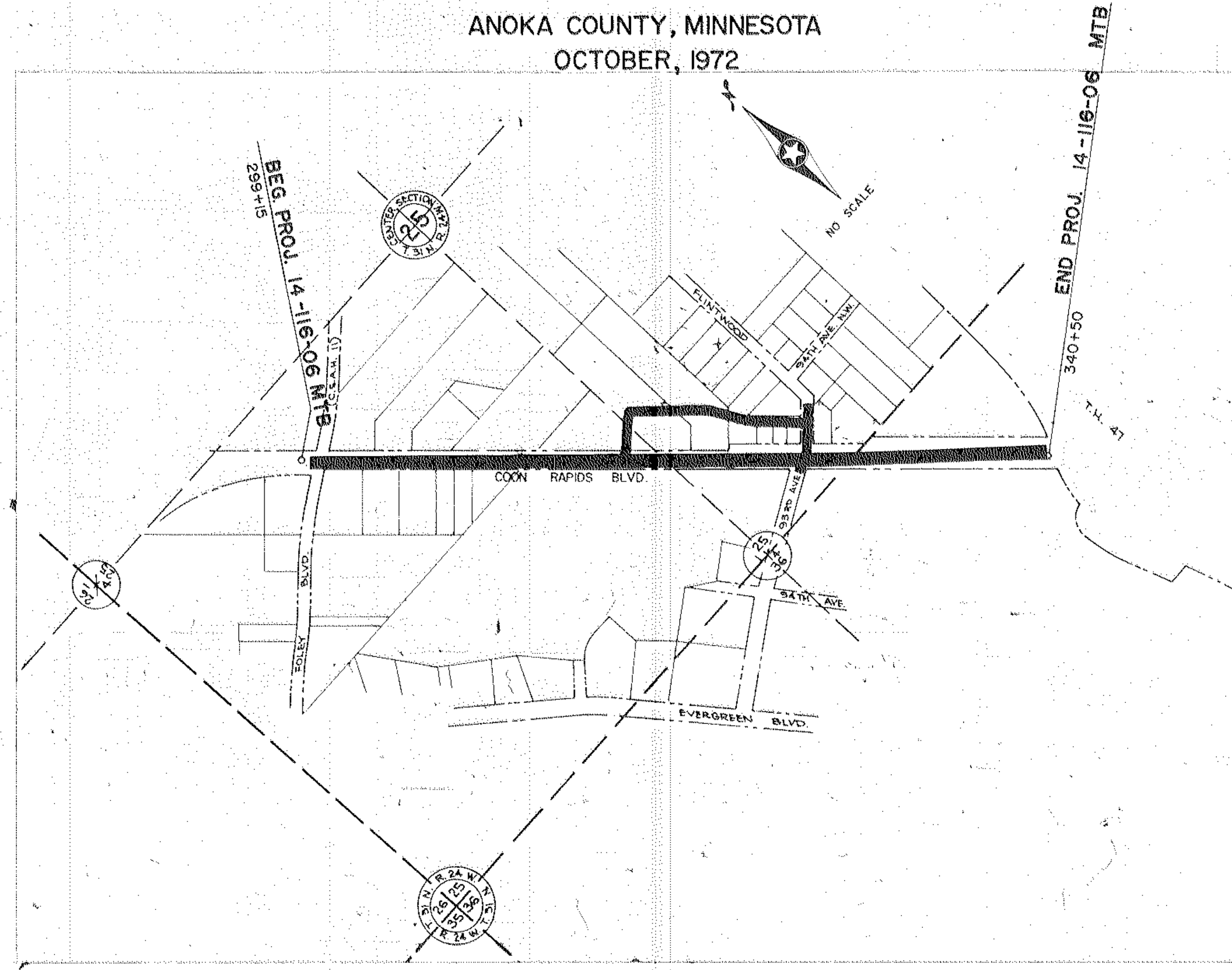
STATE OF MINNESOTA, DEPARTMENT OF HIGHWAYS "STANDARD SPECIFICATIONS FOR HIGHWAY CONSTRUCTION" DATED JANUARY 1, 1972 AND AMENDED BY "SUPPLEMENTAL SPECIFICATIONS" DATED JANUARY 1, 1974 SHALL GOVERN.

CONVENTIONAL SIGNS

STATE LINE	SPRINGS
COUNTY LINE	WASH
TOWNSHIP OR RANGE LINE	TIMBER
SECTION LINE	ORCHARD
QUARTER LINE	BRUSH
SIXTEENTH LINE	NURSERY
RIGHT-OF-WAY LINE	CATCH BASIN
PRESENT RIGHT-OF-WAY LINE	MANHOLE
CONTROL OF ACCESS LINE	FIRE HYDRANT
PROPERTY LINE (Except Land Lines)	STREET LIGHT
VACATED PLATTED PROPERTY	RAILROAD CROSSING SIGN
CORPORATE OR CITY LIMITS	RAILROAD CROSSING BELL
TRUNK HIGHWAY CENTER LINE	ELECTRIC WARNING SIGN
RETAINING WALL	CROSSING GATE
RAILROAD	CATTLE GUARD
RAILROAD RIGHT-OF-WAY LINE	OVERPASS (Highway Over)
RIVER OR CREEK	UNDERPASS (Highway Under)
DRY RUN	BRIDGE
DRAINAGE DITCH	BUILDING (One Story Frame)
ELECTRIC POWER LINE	F-FRAME C-CONCRETE
TELEPHONE OR TELEGRAPH LINE	S-STONE T-TILE
JOINT TELEPHONE AND POWER	B-BRICK ST-STUCCO
CONDUIT	IRON PIPE OR ROD
TELEPHONE CABLE - AERIAL	MONUMENT (STONE, CONCRETE, OR METAL)
TELEPHONE CABLE - UNDERGROUND	WOODEN HUB
POWER CABLE - UNDERGROUND	GRAVEL PIT
GAS MAIN	SAND PIT
CULVERT	BORROW PIT
DRIP INLET	ROCK QUARRY
GUARD RAIL	MEANER CORNER
BARBED WIRE FENCE	
WOVEN WIRE FENCE	
CHAIN LINK FENCE	
RAILROAD SNOW FENCE	
STONE WALL OR FENCE	
HEDGE	
WATER PIPE	
SEWER PIPE	
DRAIN TILE	



NOTE: SECTION NUMBERS READ FROM THE SOUTH



INDEX

Sheet No.	Description
1	TITLE SHEET
2	ESTIMATED QUANTITIES
3	TABULATIONS & DETAILS
4	TYPICAL SECTIONS
5-7	EXISTING TOPOG. & ALIGNMENT
8-11	PLAN & PROFILE
12-13	SIGNAL LAYOUT & WIRING (FUTURE)
14-26	CROSS-SECTION

REVISIONS		
DATE	SHEET NO.	REVISED BY

FROM JUNCTION FOLEY BLVD. (C.S.A.H. 11)
TO JUNCTION T.H. 47
GROSS LENGTH 4135 FEET 0.79 MILES
BRIDGES LENGTH 0 FEET 0 MILES
EXCEPTIONS LENGTH 0 FEET 0 MILES
NET LENGTH 4135 FEET 0.79 MILES

DESIGN: 9 TON, A-3 SOIL
ANTICIPATED A.D.T. 12000-24000
HC.A.D.T. OVER 1100
DESIGN SPEED 50 MPH



BERTHEL RINDROSE WOLFELD, INC. 612-931-2300
7101 YORK AVENUE SOUTH EDINA, MINNESOTA 55425

I HEREBY CERTIFY THAT THESE PLANS WERE PREPARED BY ME OR UNDER MY DIRECT SUPERVISION AND THAT I AM A DULY REGISTERED PROFESSIONAL ENGINEER UNDER THE LAWS OF THE STATE OF MINNESOTA.
Lawrence J. Giedel
DATE: 10/30/72 REG. NO. 9075

Recommended for Approval *Annex C. Pottloff* Date 9 Aug 73
CITY ENGINEER
Recommended for Approval _____ Date _____
DIST. STATE AID ENGINEER
Recommended for Approval _____ Date _____
STATE AID ENGINEER
Recommended for Approval _____ Date _____