

MINNESOTA DEPARTMENT OF TRANSPORTATION

THE CITY OF FRIDLEY ANOKA COUNTY

CONSTRUCTION PLAN FOR AGG. BASE, BIT. BASE, BIT. SURFACE, CURB AND GUTTER, STORM SEWER, GRADING, & SIDEWALK

LOCATED ON: MISSISSIPPI STREET (C.S.A.H. 6) BETWEEN A POINT 1035' WEST OF T.H. 47 AND A POINT 365' WEST OF T.H. 47 (Geographic Description)

STREET IMPROVEMENT PROJECT, ST 96-4

MISSISSIPPI STREET

STATE AID PROJ. NO. 02-606-09, 127-020-17

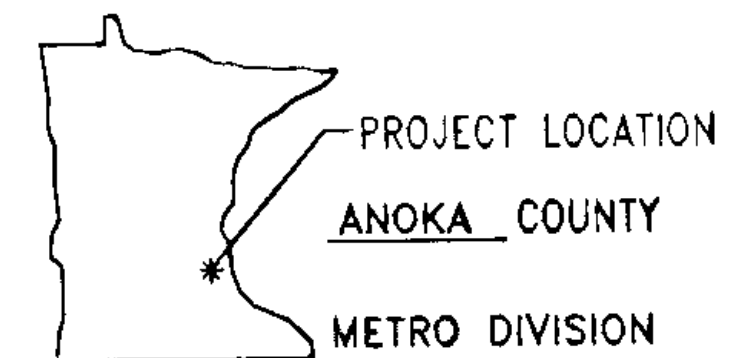
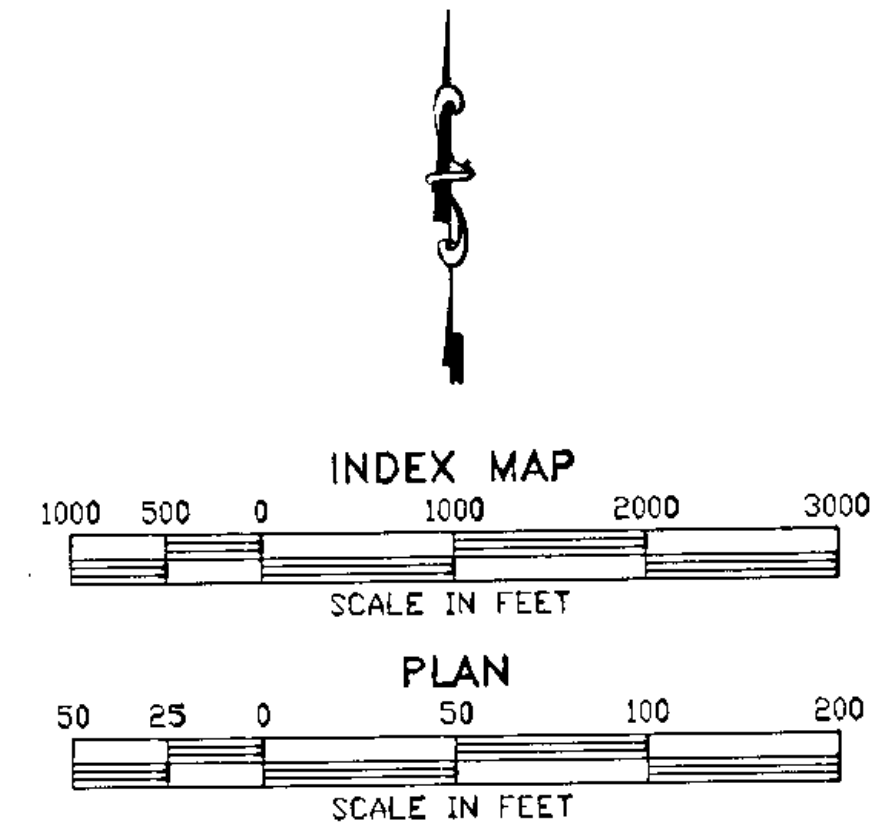
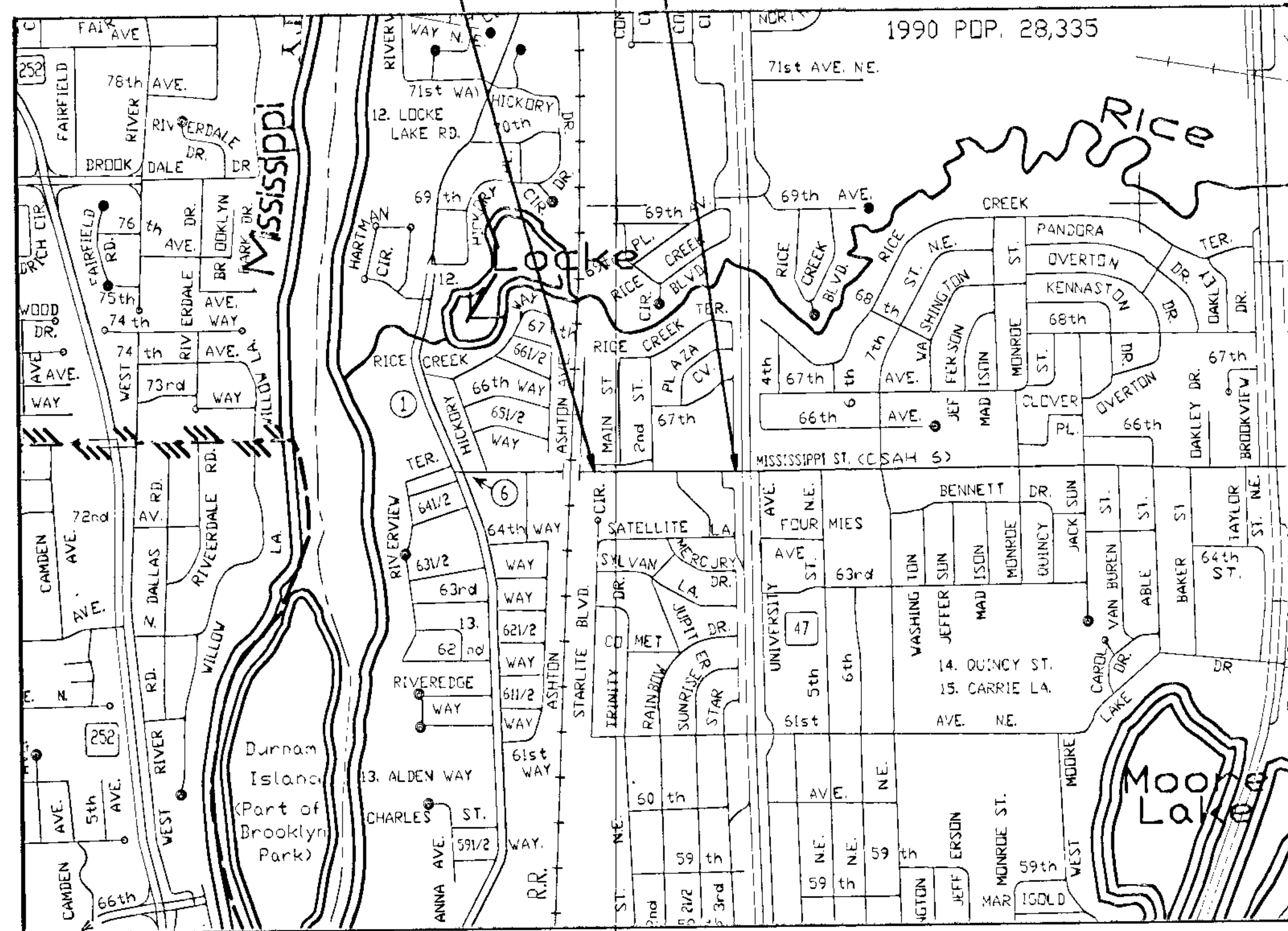
GROSS-LENGTH	1058 FEET	0.200 MILES
BRIDGE-LENGTH	0 FEET	0 MILES
EXCEPTIONS-LENGTH	0 FEET	0 MILES
NET-LENGTH	1058 FEET	0.200 MILES

MISSISSIPPI STREET (C.S.A.H. 6)
BEGIN PROJECT
STA. 6+52
S.A.P. 02-606-09
S.A.P. 127-020-17

MISSISSIPPI STREET (C.S.A.H. 6)
END PROJECT
STA. 17+10
S.A.P. 02-606-09
S.A.P. 127-020-17

LEGEND

- EXISTING GATE VALVE
- EXISTING HYDRANT
- EXISTING CURB BOX
- EXISTING MANHOLE, FOR STORM AND SANITARY SEWER
- EXISTING CATCH BASIN
- EXISTING POWER POLE
- EXISTING SANITARY SEWER
- EXISTING STORM SEWER
- EXISTING WATERMAIN
- EXISTING CURB AND GUTTER
- EXISTING UNDERGROUND GAS MAIN
- EXISTING UNDERGROUND TELEPHONE LINE
- EXISTING UNDERGROUND POWER
- EXISTING OVERHEAD POWER
- EXISTING FENCE
- EXISTING TREE
- EXISTING TREE LINE
- EXISTING STREET SIGN
- PROPOSED CATCH BASIN
- PROPOSED MANHOLE
- PROPOSED STORM SEWER
- PROPOSED CURB AND GUTTER



MINN. PROJ. NO. _____
MINN. PROJ. NO. _____

GOVERNING SPECIFICATIONS

THE 1988 EDITION OF THE MINNESOTA DEPARTMENT OF TRANSPORTATION "STANDARD SPECIFICATIONS FOR CONSTRUCTION" AND "SUPPLEMENTAL SPECIFICATIONS TO THE 1988 STANDARD SPECIFICATIONS FOR CONSTRUCTION", DATED MAY 2, 1994, SHALL GOVERN. ALL TRAFFIC CONTROL SIGNING AND DEVICES SHALL CONFORM TO THE MUTCD, INCLUDING "FIELD MANUAL FOR TEMPORARY TRAFFIC CONTROL ZONE LAYOUTS - APRIL 1995".

SHEET NO.	DESCRIPTION
1	TITLE SHEET
2	ESTIMATED QUANTITIES
3	TYPICAL SECTIONS & DETAILS
4	SIDEWALK DETAILS
5-7	TRAFFIC CONTROL PLAN
8	PLANNED REMOVAL & CONSTRUCTION
9	INTERSECTION DETAIL
10	PLAN & PROFILE STORM SEWER
11	SIGNING & STRIPING

THIS PLAN SET CONTAINS 11 SHEETS



B R W INC.
Thresher Square, 708 Third Street So.
Minneapolis, MN 55415, Phone 612/370-0700, Fax 612/370-1378

I HEREBY CERTIFY THAT THIS PLAN WAS PREPARED BY ME OR UNDER MY DIRECT SUPERVISION AND THAT I AM A DULY REGISTERED PROFESSIONAL ENGINEER UNDER THE LAWS OF THE STATE OF MINNESOTA.

BRW, INC.
DATE _____ REG. NO. 23197
ENGINEER _____
2881A06

Design Squad J. LONG, L. SORENSON, C. PAPP, & M. STICKLAND

Approved _____ 19____ CITY ENGINEER

Approved _____ 19____ ANOKA COUNTY ENGINEER

Recommended For Approval _____ 19____ METRO - ASSISTANT DIVISION ENGINEER - STATE AID

Recommended For Approval _____ 19____ STATE AID PLANS AND SPECS ENGINEER

Approved _____ 19____ STATE AID ENGINEER

DESIGN DESIGNATION: MISSISSIPPI STREET (S.A.P. 02-606-09, 127-020-17)

Functional Classification	■ 4-LANE ARTERIAL (HIGH DENSITY)
No. of Traffic Lanes	■ <u>4</u> No. of Parking Lanes ■ <u>0</u>
ADT (Current Year) 1996	■ <u>10,500</u> Design Speed <u>35</u> MPH
ADT (Future Year) 2016	■ <u>17,850</u> Based on STOPPING Sight Distance
QHV (Design Hr. Vol.)	■ <u>N/A</u> Height of eye <u>3.5'</u> Height of Object <u>0.5'</u>
D (Directional Distr.)	■ <u>N/A</u> % Design Speed not achieved at: <u>N/A</u>
T (Heavy Commercial)	■ <u>N/A</u> % STA. <u>N/A</u> TO STA. <u>N/A</u>
R-Value <u>60</u>	N18 Factor <u>1,872,976</u> Design Load <u>10</u> TON

PLAN REVISIONS		
DATE	SHEET NO.	APPROVED BY
2-14-97	AS-BUILT	

I HEREBY CERTIFY THAT THE FINAL FIELD REVISIONS, IF ANY, OF THIS PLAN WERE MADE BY ME OR UNDER MY DIRECT SUPERVISION AND THAT I AM A DULY REGISTERED PROFESSIONAL ENGINEER UNDER THE LAWS OF THE STATE OF MINNESOTA.

DATE 3-1-97 REG. NO. 23197

STATE AID PROJ. NO. 02-606-09, 127-020-17 SHEET NO. 1 OF 11 SHEETS
STATE PROJ. NO. _____

DISK FILE NAME: R:\2881\MISS-SHT\2881-COV.DWG PLOT DATE: Jul 16, 1996 7:37am

STATEMENT OF ESTIMATED QUANTITIES

S.A.P. 02-606-09 S.A.P. 127-020-17

NOTE NO.	SPEC. NO.	ITEM	UNIT	TOTAL PROJECT QUANTITIES	MISSISSIPPI ST. S.A.P. PARTICIPATING QUANTITIES	MISSISSIPPI ST. S.A.P. NON-PARTICIPATING QUANTITIES
	2021.501	MOBILIZATION	LUMP SUM	1.00	0.85	0.15
2102.502		PAVEMENT MARKING REMOVAL	LIN FT	1820.00	1820.00	
2104.501		REMOVE CURB AND GUTTER	LIN FT	1509.00	1254.00	255.00
2104.503		REMOVE CONCRETE SIDEWALK	SQ FT	6808.00	6808.00	
2104.503		REMOVE CONCRETE DRIVEWAY PAVEMENT	SQ FT	140.00	140.00	
2104.503		REMOVE BITUMINOUS PAVEMENT	SQ FT	14484.00	7079.00	7415.00
2104.509		REMOVE CATCH BASIN	EACH	1.00	1.00	
2104.509		REMOVE HYDRANT	EACH	1.00	1.00	
2104.513		SAWING BITUMINOUS PAVEMENT	LIN FT	3260.00	2460.00	800.00
2104.523		SALVAGE CASTING ASSEMBLY (STORM)	EACH	3.00	3.00	
2104.523		SALVAGE LIGHT STANDARD & LUMINAIRE	EACH	3.00	3.00	1.00
2104.523		SALVAGE SIGN TYPE C	EACH	10.00	8.00	4.00
0104.603		SALVAGE CONCRETE PAVERS	SQ FT	980.00	980.00	
2105.501		COMMON EXCAVATION (P)	CU YD	538.00	338.00	300.00
2105.507		SUBGRADE EXCAVATION	CU YD	128.00	68.00	60.00
2105.543		STABILIZING AGGREGATE	TON	20.00	20.00	
2211.501		AGGREGATE BASE CLASS 5	TON	745.00	563.00	182.00
2232.501		MILL BITUMINOUS SURFACE (1.5")	SQ YD	2340.00	2340.00	
2340.508		TYPE 41 WEARING COURSE MIXTURE	TON	369.00	338.00	31.00
2340.510		TYPE 31 BINDER COURSE MIXTURE	TON	154.00	154.00	
2340.514		TYPE 31 BASE COURSE MIXTURE	TON	273.00	232.00	41.00
2357.502		BITUMINOUS MATERIAL FOR TACK COAT	GALLON	878.00	784.00	94.00
2503.541		12" RC PIPE SEWER DESIGN 3008 CLASS V	LIN FT	63.00	63.00	
2506.502		CONST DRAINAGE STRUCTURE DES F	EACH	2.00	2.00	
2506.502		CONST DRAINAGE STRUCTURE DES G OR H	EACH	4.00	4.00	
2506.516		CASTING ASSEMBLY (STORM)	EACH	5.00	5.00	
0506.602		INSTALL SALVAGED CASTING ASSEMBLY (STORM)	EACH	3.00	3.00	
0506.602		RECONSTRUCT DRAINAGE STRUCTURE	EACH	1.00	1.00	
0506.602		CONNECT INTO EXISTING CATCH BASIN	EACH	1.00	1.00	
0506.602		CONNECT INTO EXISTING STORM SEWER	EACH	3.00	3.00	
2521.501		4" CONCRETE WALK	SQ FT	4921.00	4168.00	755.00
2521.501		4" CONCRETE MEDIAN PAVEMENT	SQ FT	3591.00	3446.00	145.00
2531.501		CONCRETE CURB & GUTTER DESIGN B612	LIN FT	1444.00	942.00	502.00
2531.501		CONCRETE CURB & GUTTER DESIGN B618	LIN FT	1116.00	1116.00	
2531.507		7" CONCRETE DRIVEWAY PAVEMENT	SQ YD	19.00	19.00	
0531.602		PEDESTRIAN CURB RAMP (CONCRETE)	EACH	10.00	8.00	2.00
0531.602		CONCRETE MEDIAN NOSE	EACH	4.00	3.00	1.00
0531.603		7" CONCRETE VALLEY GUTTER	LIN FT	20.00	20.00	
0531.605		INSTALL SALVAGED CONCRETE PAVERS	SQ FT	980.00	980.00	
0531.605		FURNISH & INSTALL CONCRETE PAVERS	SQ FT	100.00	100.00	
2545.515		LIGHT BASE DESIGN E	EACH	2.00	2.00	
0545.602		INSTALL SALVAGED LIGHT STANDARD AND LUMINAIRE	EACH	2.00	2.00	
0563.601		TRAFFIC CONTROL (PHASE 1)	LUMP SUM	1.00	1.00	
0563.601		TRAFFIC CONTROL (PHASE 2)	LUMP SUM	1.00	1.00	
0563.603		RAISED PAVEMENT MARKER TEMPORARY	EACH	317.00	317.00	
2564.531		F&I SIGN PANELS TYPE C	SQ FT	86.00	78.75	7.25
0564.602		INSTALL SALVAGED SIGN PANEL TYPE C	EACH	10.00	8.00	4.00
0564.602		PAVEMENT MESSAGE (LEFT ARROW) PAINT	EACH	4.00	4.00	
0564.602		PAVEMENT MESSAGE (ONLY) PAINT	EACH	2.00	2.00	
0564.603		4" SOLID LINE WHITE - PAINT	LIN FT	416.00	260.00	156.00
0564.603		4" SOLID LINE YELLOW - PAINT	LIN FT	40.00	40.00	
0564.603		4" DOUBLE SOLID LINE YELLOW - PAINT	LIN FT	820.00	620.00	
0564.603		24" SOLID LINE YELLOW - PAINT	LIN FT	90.00	90.00	
0564.603		24" STOP LINE WHITE - PAINT	LIN FT	40.00	40.00	
0564.603		4" BROKEN WHITE - PAINT	LIN FT	280.00	280.00	
0565.602		PVC HANDHOLE (METAL FRAME AND COVER)	EACH	2.00	2.00	
0565.603		2" RIGID STEEL CONDUIT (RSC)	LIN FT	60.00	60.00	
0565.603		4" RIGID STEEL CONDUIT (RSC)	LIN FT	215.00	215.00	
2573.502		SILT FENCE, TYPE HEAVY DUTY	LIN FT	200.00	100.00	100.00
2575.555		TURF ESTABLISHMENT	LUMP SUM	1.00	0.48	0.52
2581.501		4" REMOVABLE PREFORMED PLASTIC MARKING (YELLOW)	LIN FT	4150.00	4150.00	

S.A.P. SPLIT BY PERCENT OF CONSTRUCTION COST.

STORM SEWER STRUCTURE CHART

STRUCTURE	DESIGN	CASTING	SIZE	RIM ELEVATION	INVERT ELEVATION
CB 1	G	B	48"	860.76	857.30
CB 2	H	B	27"	860.72	857.52
CB 3	H	B	27"	856.76	853.15
CB 4	H	B	27"	861.25	857.18
CB MH 9	EXISTING G	A	48"	860.40	856.48
CB MH 10	EXISTING H	A	27"	860.66	857.33
ST MH 1	F	A	48"	861.05	857.20
					856.23
					857.08
ST MH 2	F	A	48"	861.04	856.88

CASTING ASSEMBLY

KEY	MNDOT STD PLATE NO
A	4101C - CASTING NO. 700-7
	4110E - CASTING NO. 716
B	SALVAGED 4126F - CASTING NO. 801
	SALVAGED 4149C - CASTING NO. 810
	SALVAGED 4161F - CASTING NO. 821B

ALL CONTRACTORS MUST CONTACT
GOPHER STATE
CALL ONE
MN. TOLL FREE 1-800-252-1166
BEFORE CONSTRUCTION BEGINS
TWIN CITY AREA 454-0002

UTILITIES

A MINNEGASCO
ATTN: MARK SPANTON
700 W LINDEN AVE.
P.O. BOX 1165
MINNEAPOLIS MN 55440-1165
B U.S. WEST COMMUNICATIONS
ATTN: LEROY DAHLBERG
6244 CEDAR AVE. SOUTH
RICHFIELD MN 55423
C NSP
ATTN: HARLEY HEIGEL
1518 CHESTNUT AVENUE N.
MINNEAPOLIS MN 55403
D PARAGON CABLE
ATTN: LON HALL
ATTN: (612) 552-5200
801 PLYMOUTH AVENUE N.
MINNEAPOLIS MN 55411

BASIS FOR QUANTITIES

AGGREGATE BASE CLASS 5 105 LBS/SY/IN
 BITUMINOUS MATERIAL FOR TACK COAT 0.20 GAL/SY
 BITUMINOUS PAVEMENT 115 LBS/SY/IN
 TURF ESTABLISHMENT SEEDING - MNDOT TYPE 500 75 LB/ACRE
 COMMERCIAL FERTILIZER ANALYSIS 20-10-10 400 LB/ACRE
 TYPE I MULCH 2 TONS/ACRE

THESE STANDARD PLATES AS APPROVED BY THE FHWA SHALL APPLY ON THIS PROJECT.

PLATE NO.	DESCRIPTION
3000L	REINFORCED CONCRETE PIPE
3006G	GASKET JOINT FOR RC PIPE
4005L	MANHOLE OR CATCH BASIN (DESIGN F)
4006L	MANHOLE OR CATCH BASIN (DESIGN H OR G)
4101C	RING CASTING FOR MANHOLE OF CATCH BASIN
4110E	COVER CASTING FOR MANHOLE
7035J	CONCRETE WALK & CURB RETURNS AT ENTRANCE
7036D	PEDESTRIAN CURB RAMP
7100G	CONCRETE CURB AND GUTTER
8000I	STANDARD BARRICADES
8127B	LIGHT BASE - DESIGN E

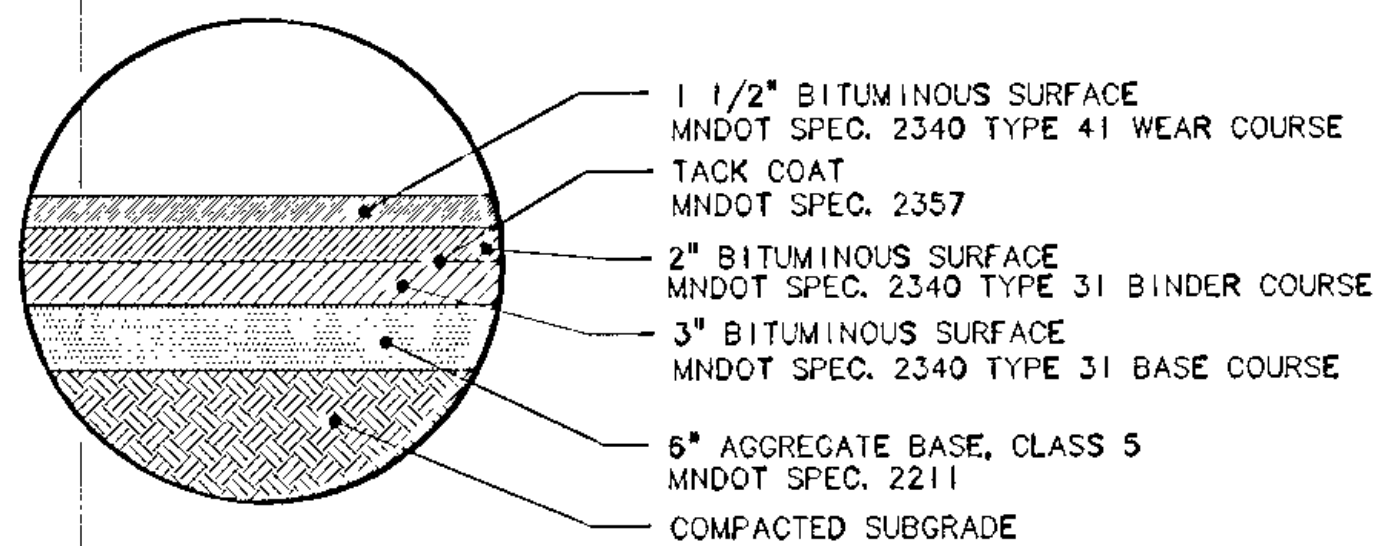
S.A.P. 02-606-09
S.A.P. 127-020-17

CITY OF FRIDLEY
MISSISSIPPI STREET (C.S.A.H. 6)
ST. IMPROVEMENT PROJ. ST 96-4
STATEMENT OF ESTIMATED QUANTITIES

DESIGNER: B & W INC
 DRAWN BY: JML LCS
 CHECKED BY: PBD
 DATE: MAY 15, 1996
 MINN. REG. NO. 23197

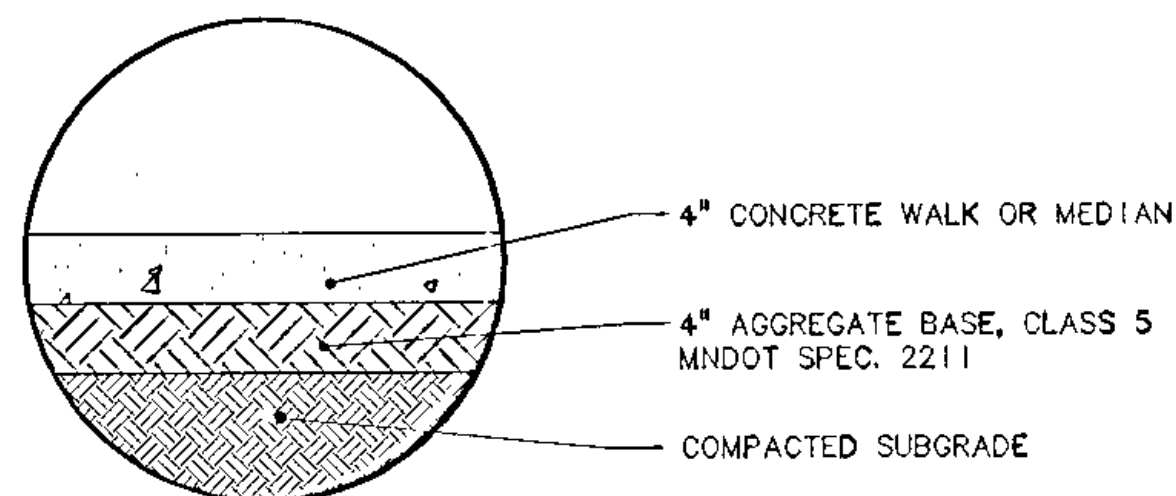
I HEREBY CERTIFY THAT THIS PLAN, SPECIFICATION OR REPORT WAS PREPARED BY ME OR UNDER MY DIRECT SUPERVISION AND THAT I AM A DULY REGISTERED PROFESSIONAL ENGINEER UNDER THE STATE OF MINN. STATUTES SECTION 326.02 TO 326.16

B & W INC
 Thrasher Square, 700 Third Street So.
 Minneapolis, MN 55415, Phone 612/270-0700, Fax 612/270-1378

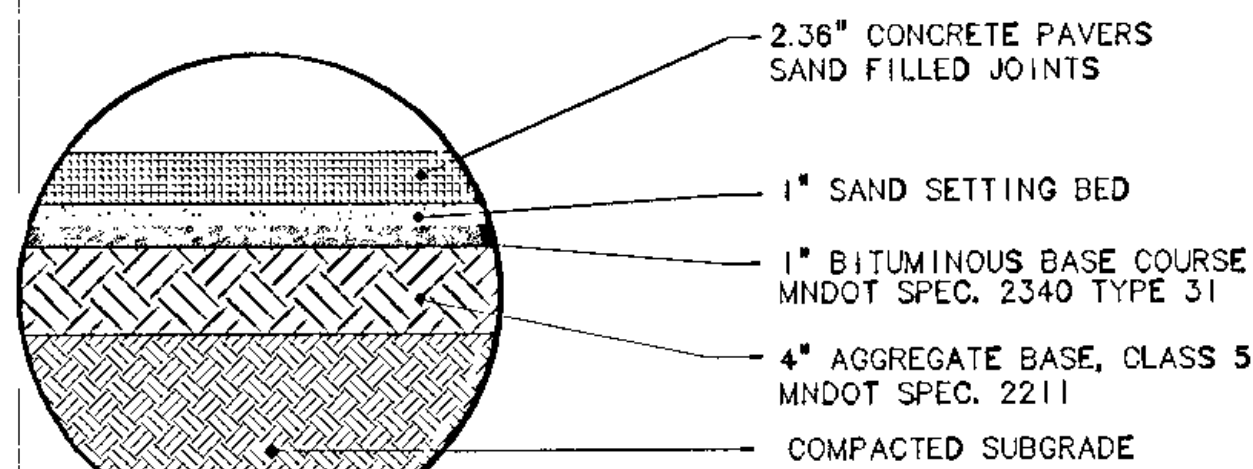


DETAIL A

USE DETAIL A FOR WORK WITHIN STREET RIGHT OF WAY
REFER TO DETAIL D FOR WORK OUTSIDE RIGHT OF WAY

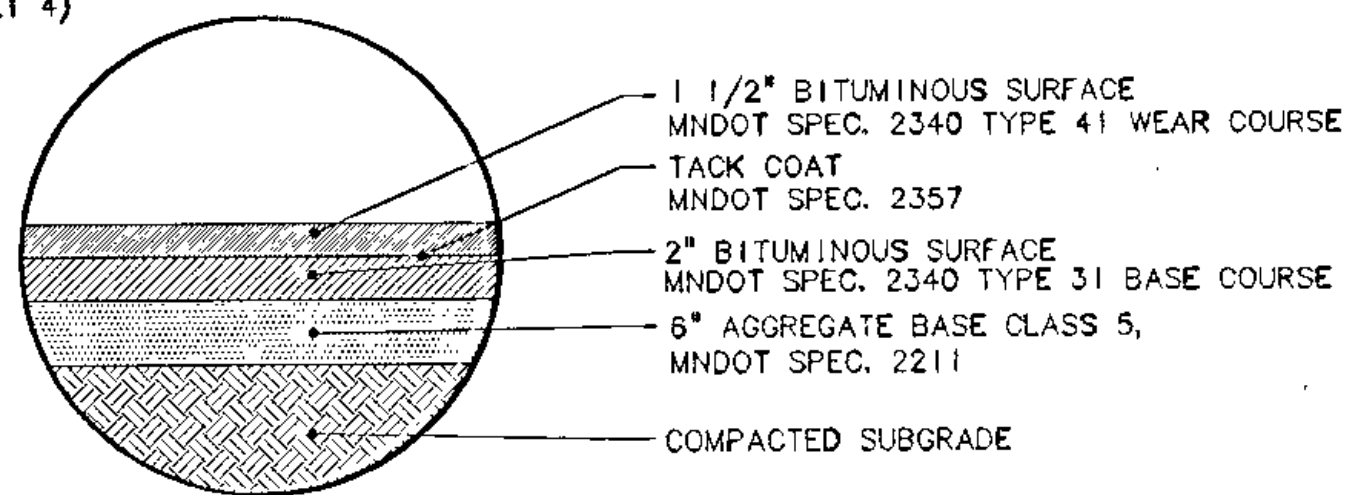


DETAIL B



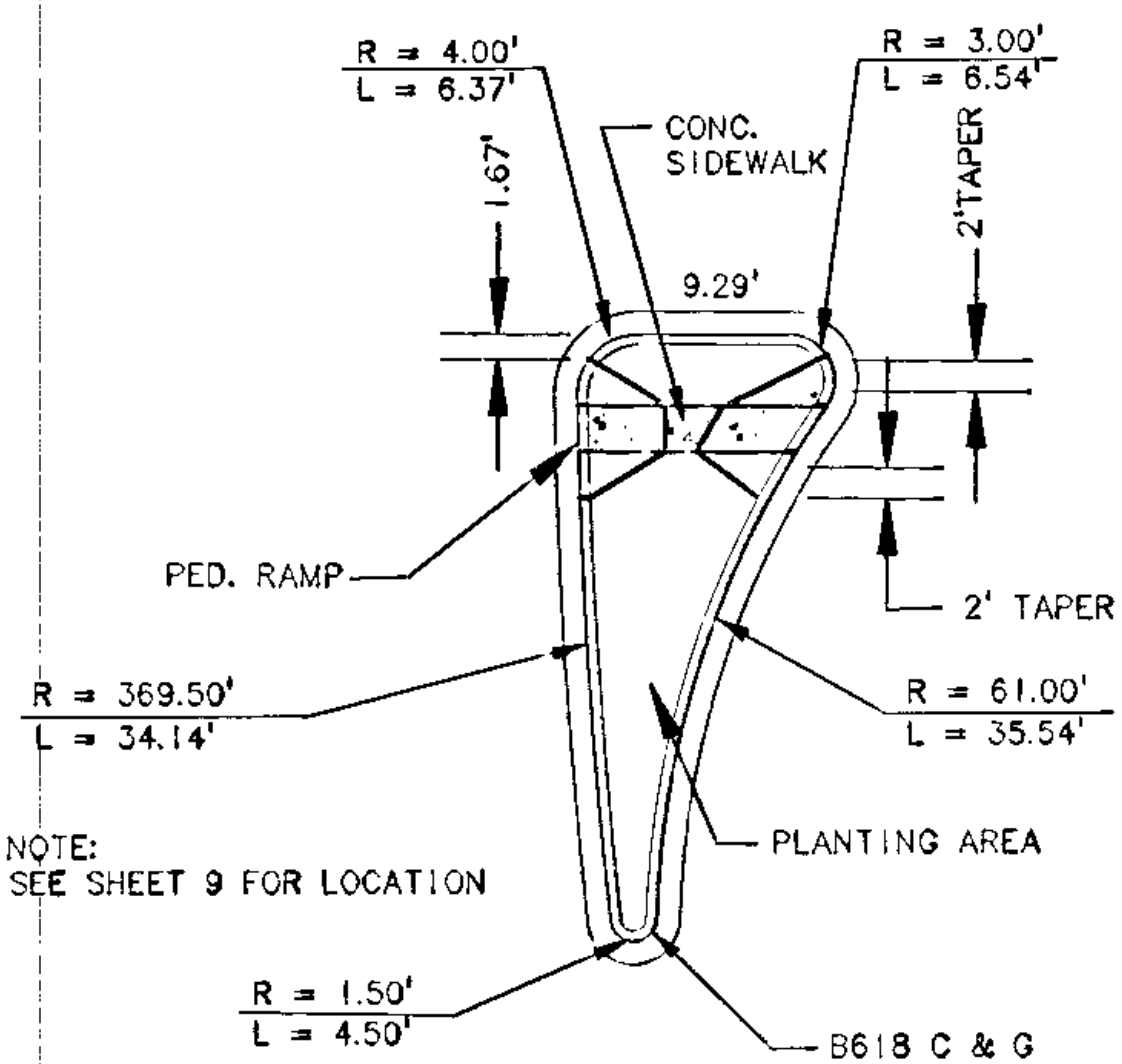
DETAIL C

(SEE SIDEWALK SECTION ON SHEET 4)

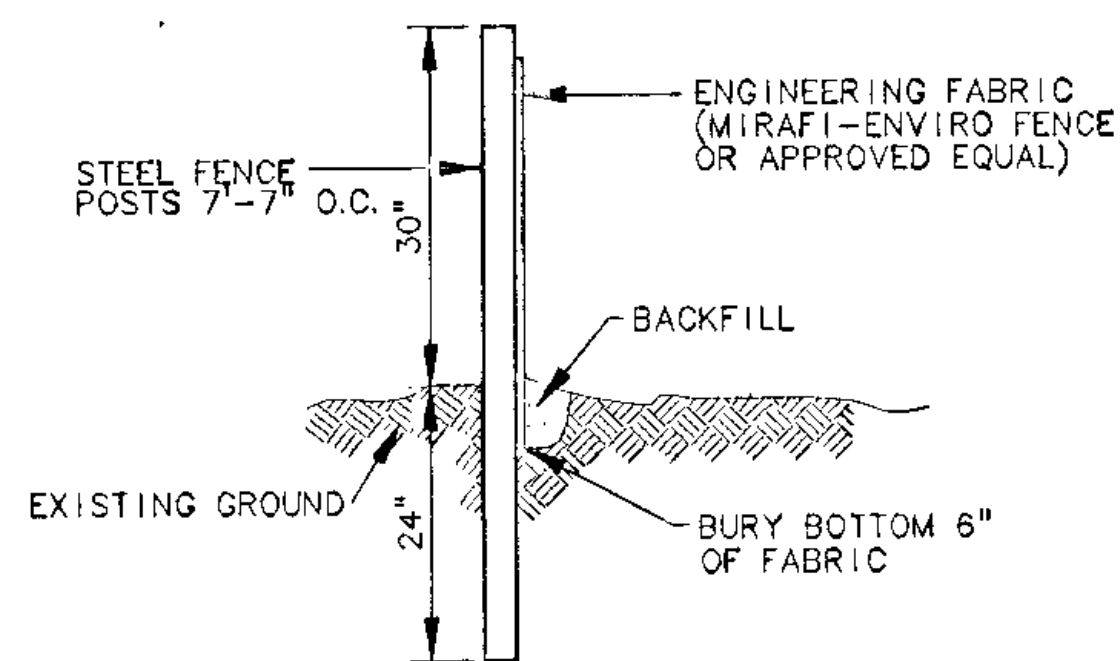


DETAIL D

NOTE:
SUBGRADE SHALL BE GRANULAR MATERIAL. AREAS
OF CLAY SHALL BE SUBCUT 3' AND REPLACED
WITH GRANULAR MATERIAL. SUBDRAINS
SHALL BE INSTALLED IN SUBCUT AREAS.



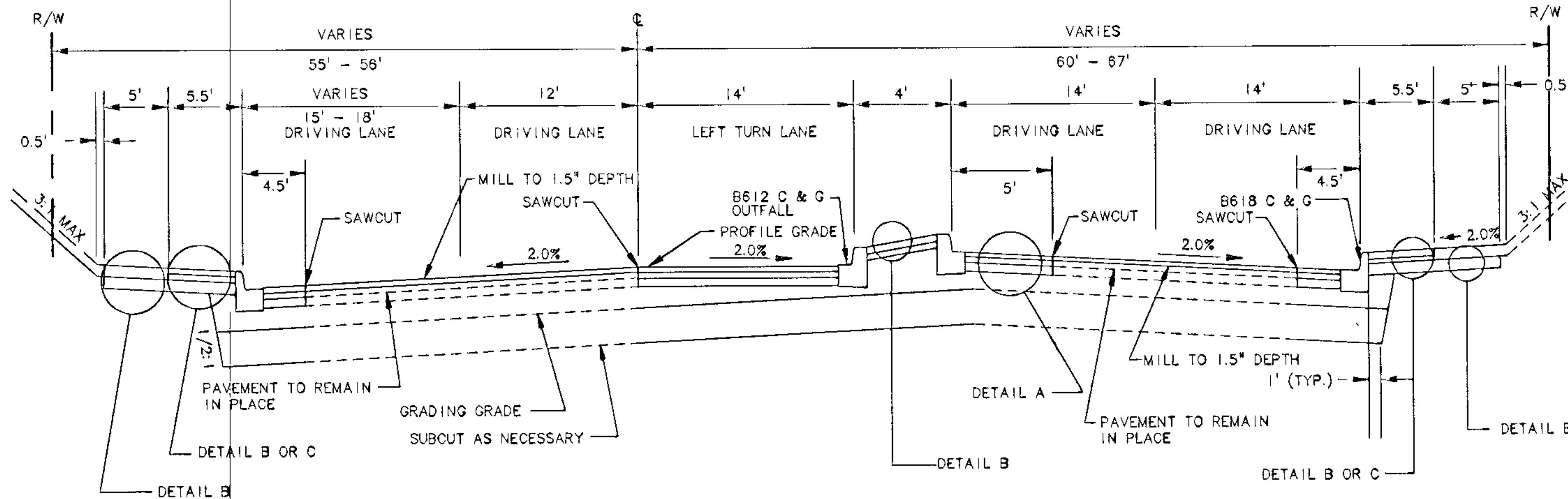
MEDIAN DETAIL



EROSION CONTROL FENCE

CONTRACTOR IS RESPONSIBLE FOR REMOVAL OF ALL
EROSION CONTROL MATERIALS FOLLOWING TURF ESTABLISHMENT

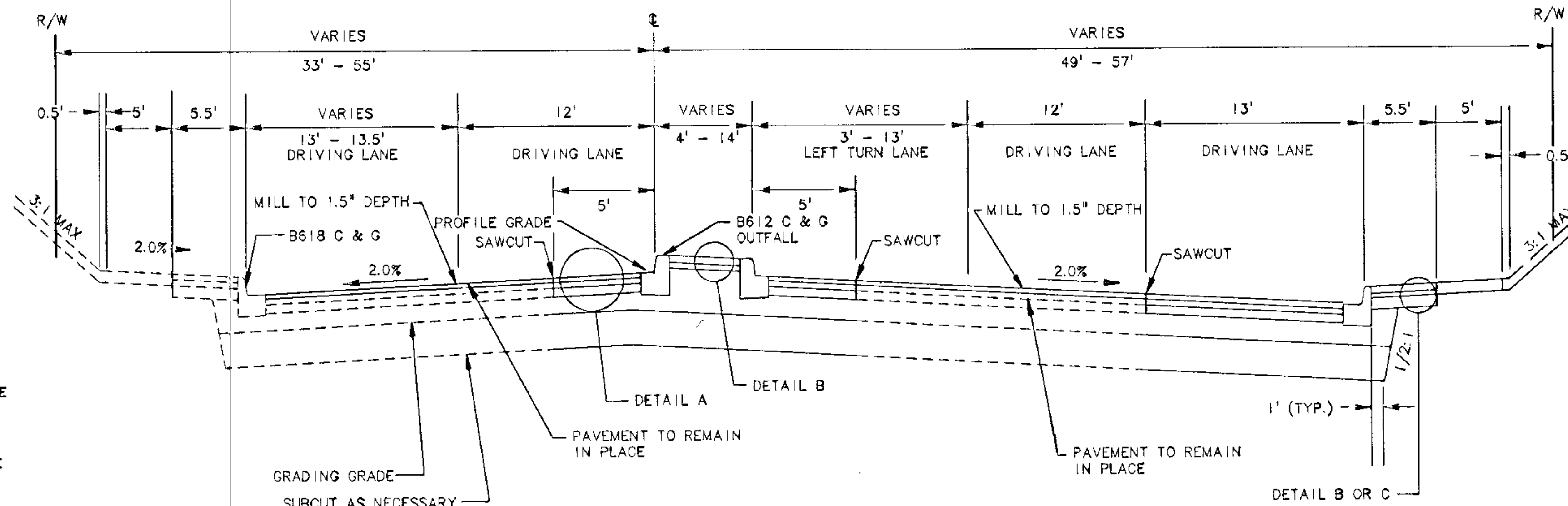
NOTE:
PLACEMENT OF SILT FENCE TO
BE DETERMINED IN THE FIELD
BY THE ENGINEER.



MISSISSIPPI STREET (C.S.A.H. 6)

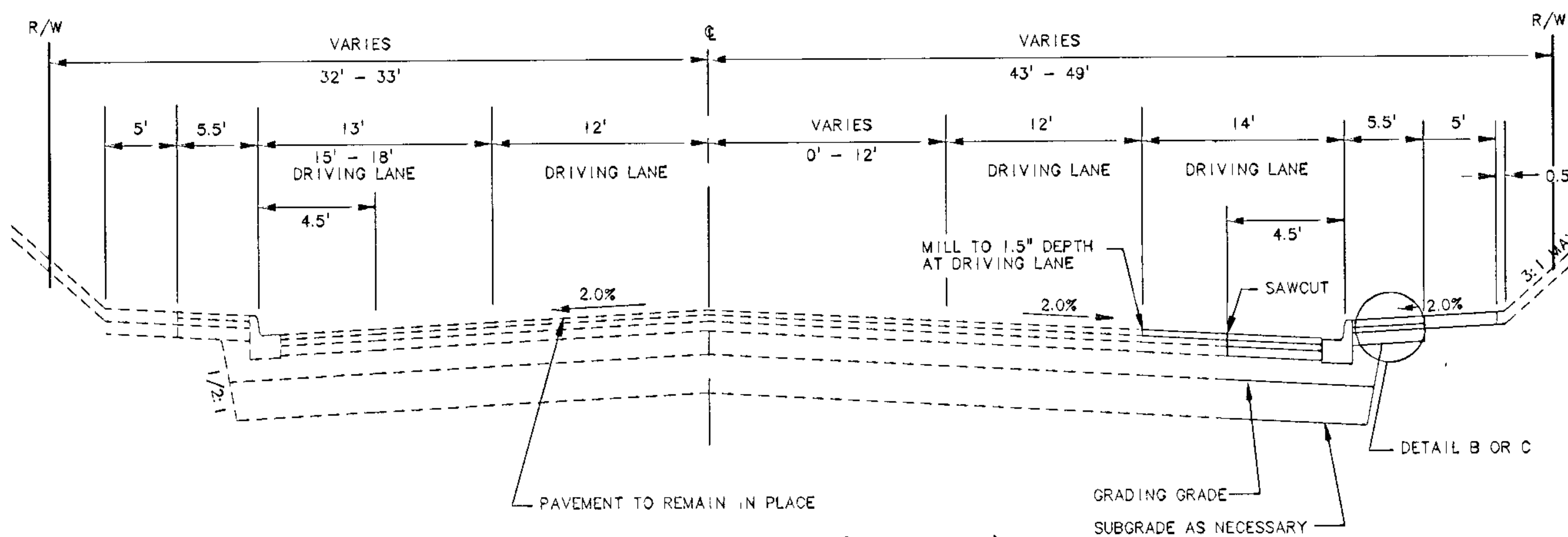
TYPICAL SECTION STA. 12+75 TO 14+42

NOTE: ALL DISTURBED AREAS NOT COVERED
WITH PAVEMENT SHALL HAVE A PERMANENT
VEGETATIVE COVER.



MISSISSIPPI STREET (C.S.A.H. 6)

TYPICAL SECTION STA. 10+40 TO 12+19



MISSISSIPPI STREET (C.S.A.H. 6)

TYPICAL SECTION STA. 6+52 TO 10+40

S.A.P. 02-606-09
S.A.P. 127-020-17

DESCRIPTION	DATE	REV. NO.
AS-BUILT	2-14-97	1

DESIGN FILE: 2881AD6	DESIGN BY: JML	DWG. NAME: 2881DET3	DATE: MAY 15, 1996
DRAWN BY: CKP	CHECKED BY: LS		

I HEREBY CERTIFY THAT THIS PLAN, SPECIFICATION OR REPORT WAS PREPARED BY ME OR UNDER MY DIRECT SUPERVISION AND THAT I AM A DULY REGISTERED PROFESSIONAL ENGINEER UNDER THE STATUTES OF MINNESOTA STATUTES SECTION 326.02 TO 326.16.

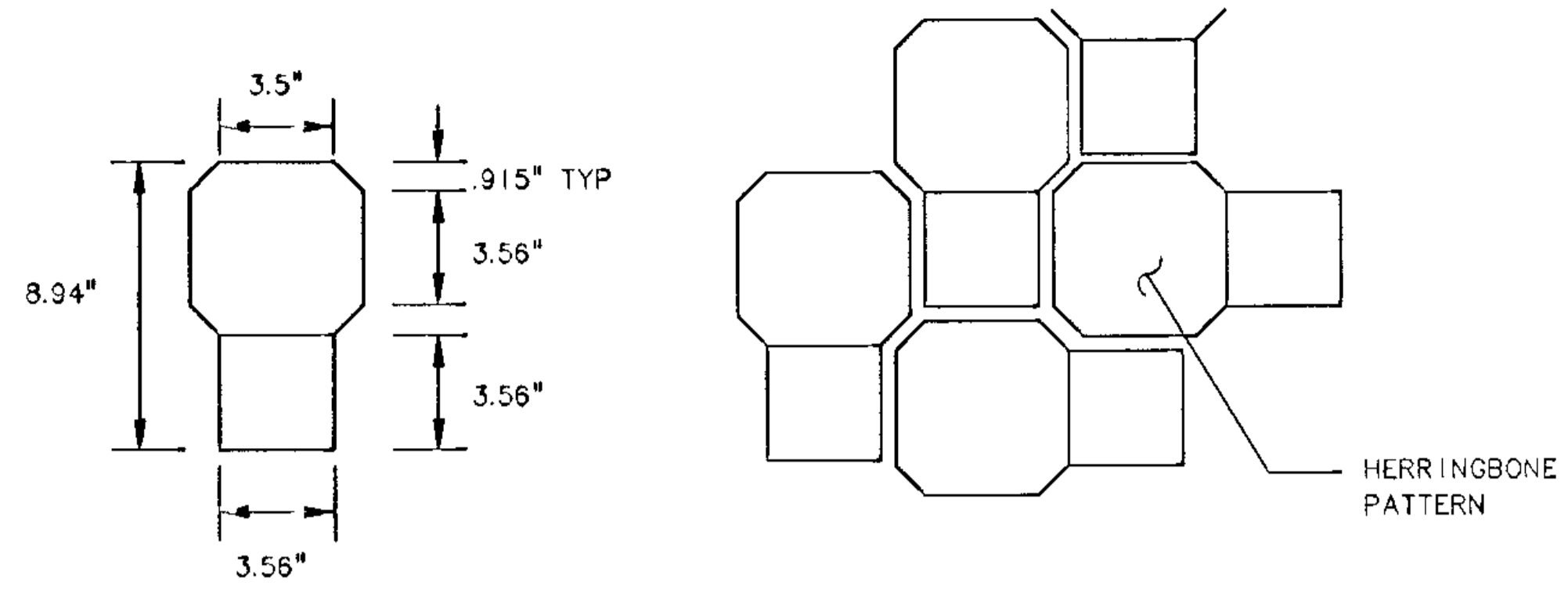
MINN. REG. NO. 23192 DATE: MAY 15, 1996

B R W INC.
Thresher Square, 700 Third Street So.
Minneapolis, MN 55415, Phone 612/770-0700, Fax 612/770-1370

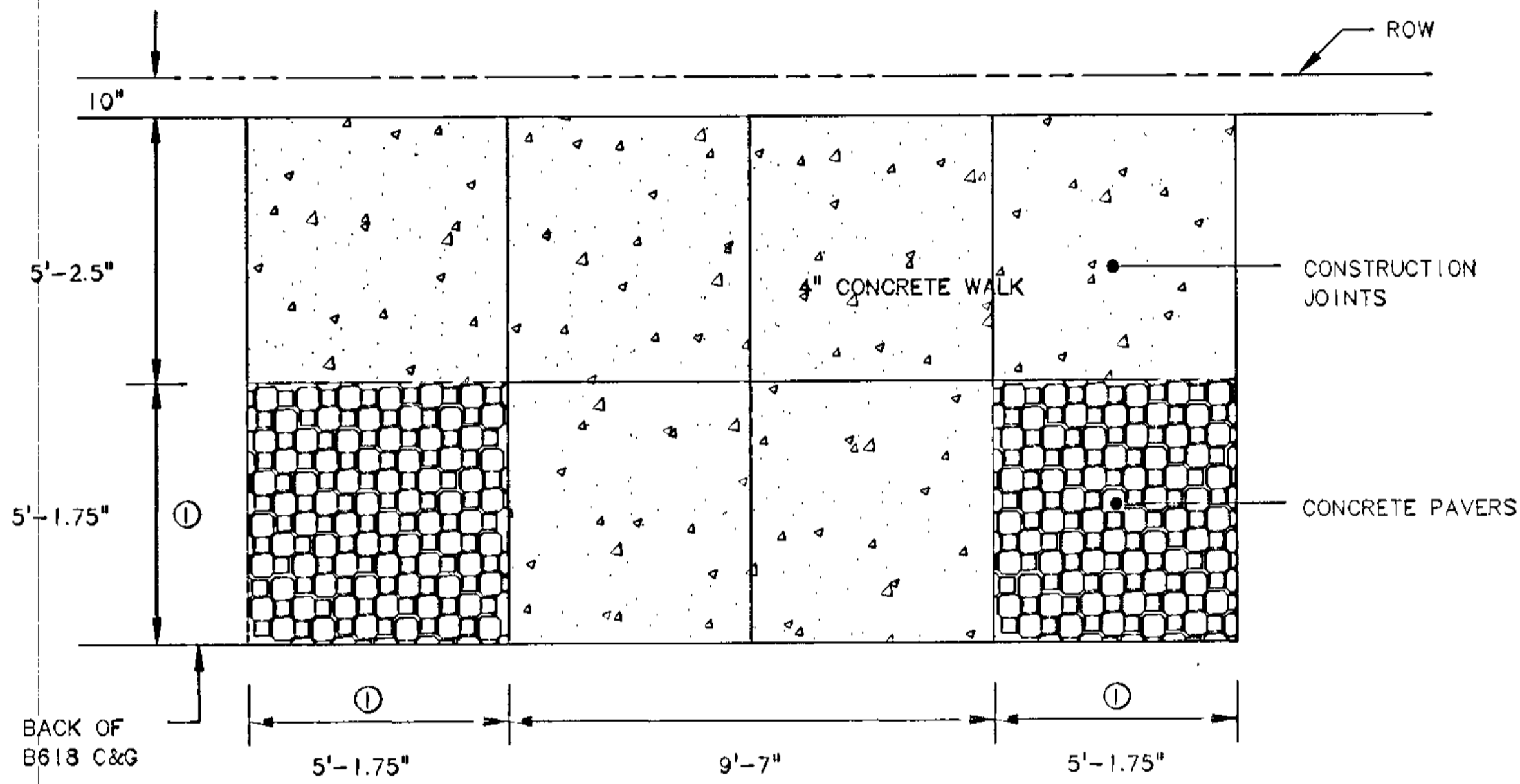
CITY OF FRIDLEY
MISSISSIPPI STREET (C.S.A.H. 6)
ST. IMPROVEMENT PROJ. ST 96-4
TYPICAL SECTIONS, AND
TYPICAL DETAILS

SHEET NO. 3

D:\SP FILE NAME R:\2881\MS-541\2881DET3.DWG
 PLOT DATE: Jul 16, 1996 7:56am

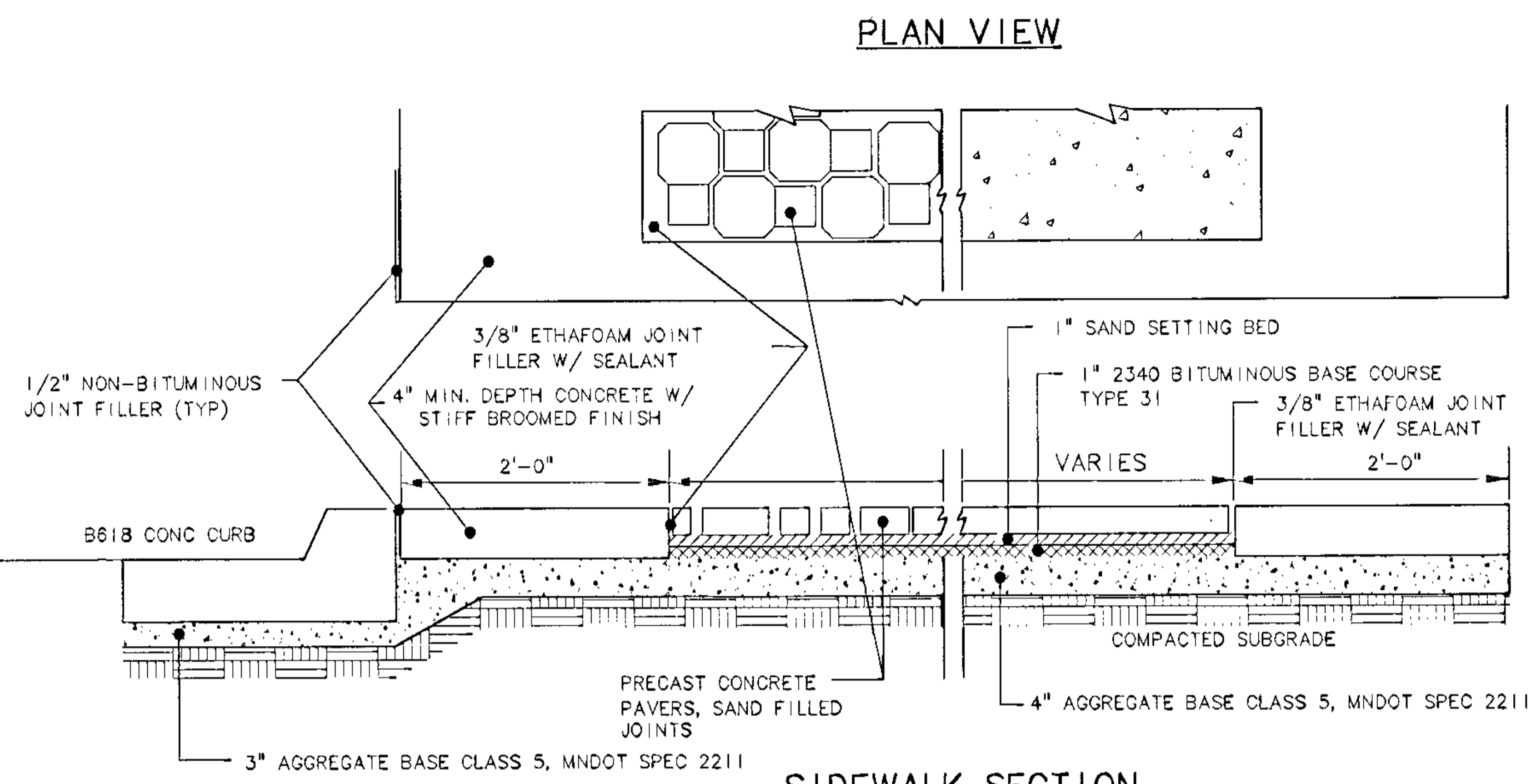


CONCRETE PAVER DETAIL



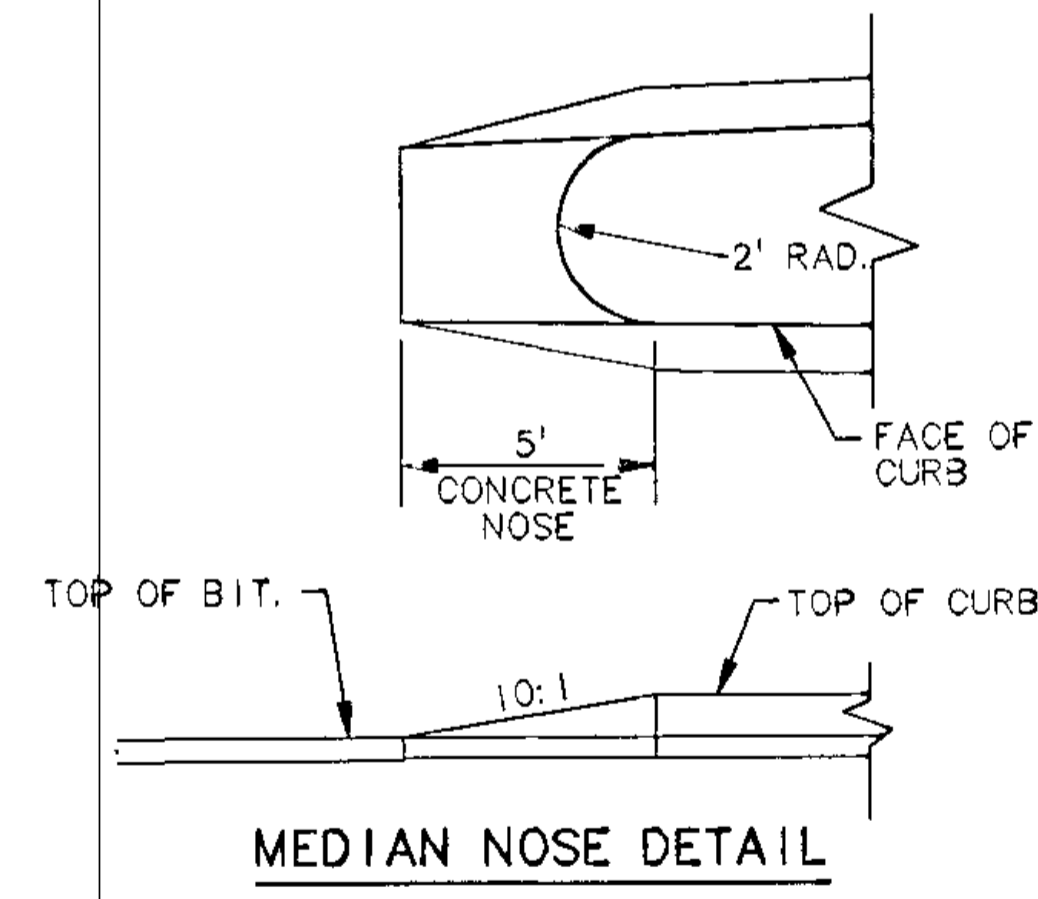
SIDEWALK PANEL LAYOUT

① NOMINAL DISTANCE, REVISE AS NECESSARY TO MATCH PAVING STONE PATTERN.

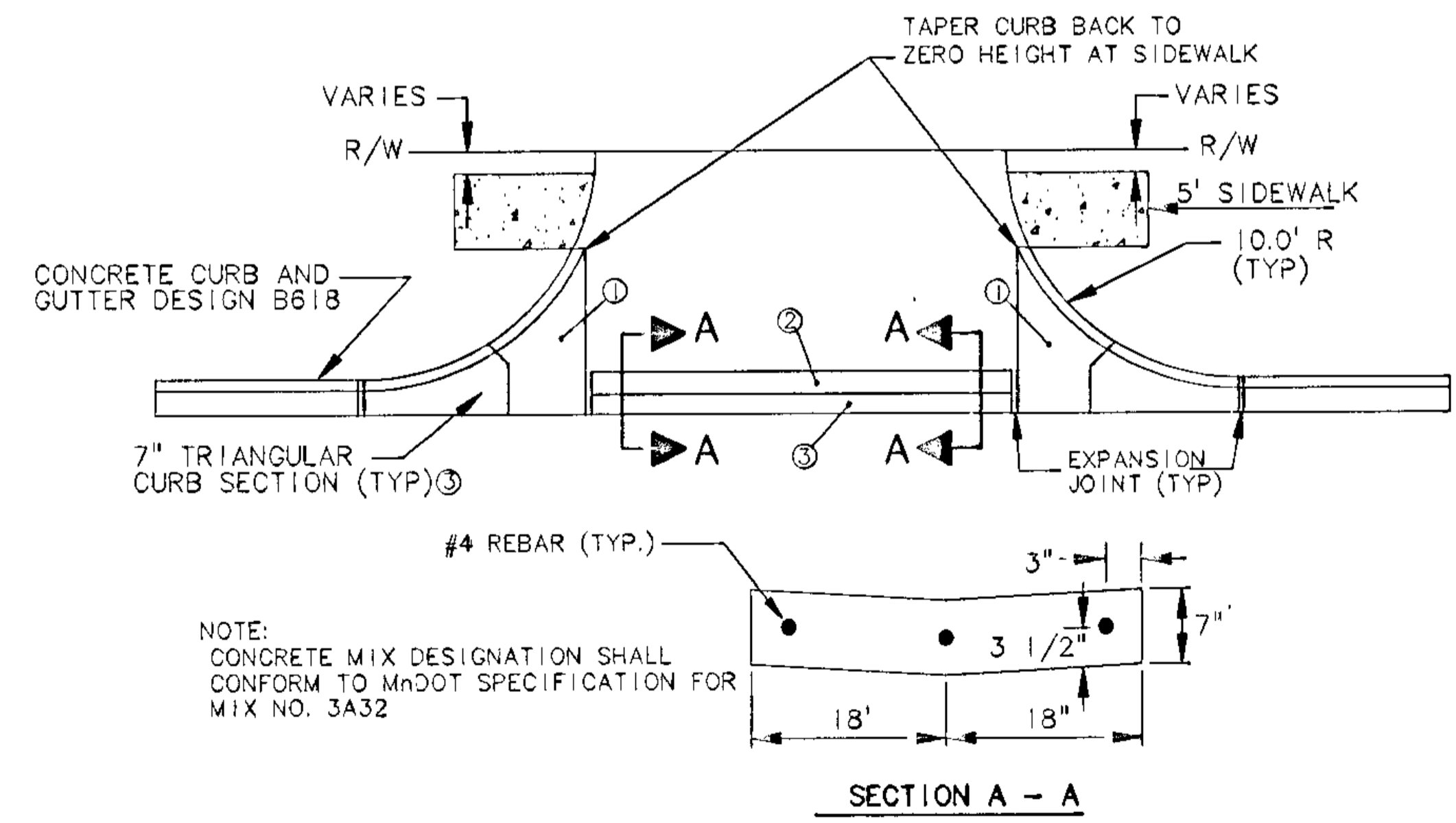


SIDEWALK SECTION

- NOTES:
1. REMOVE EXISTING WALK AS NECESSARY FOR NEW CONSTRUCTION.
 2. FIELD DETERMINE LIMITS BY STARTING AT EXIST. SIDEWALK TO REMAIN AND WORK AT REQUIRED SPACING INTERVAL.
 3. CONCRETE CURB AND GUTTER SHALL BE DESIGN B618 UNLESS OTHERWISE NOTED IN PLANS.
 4. PEDESTRIAN CURB RAMP SHALL BE CONSTRUCTED IN ACCORDANCE WITH MNDOT STANDARD PLATE NO. 7036D. RAMP THROAT WIDTH SHALL BE INCREASED TO 5' AND SURFACE FINISH SHALL BE STIFF-BROOMED CONCRETE.



MEDIAN NOSE DETAIL



SECTION A - A

- ① PAID FOR AS 7" CONCRETE DRIVEWAY PAVEMENT
- ② PAID FOR AS CONCRETE VALLEY GUTTER
- ③ PLACE ON MIN. 10" CLASS 5 AGGREGATE BASE

TYPICAL COMMERCIAL DRIVEWAY OPENING DETAIL

DISK FILE NAME: R:\2881\MISS-SHT\2881SWK.DWG
PLOT DATE: JUN 16, 1996 7:06am

REV. NO.	DATE	DESCRIPTION
1	2-14-97	AS-BUILT

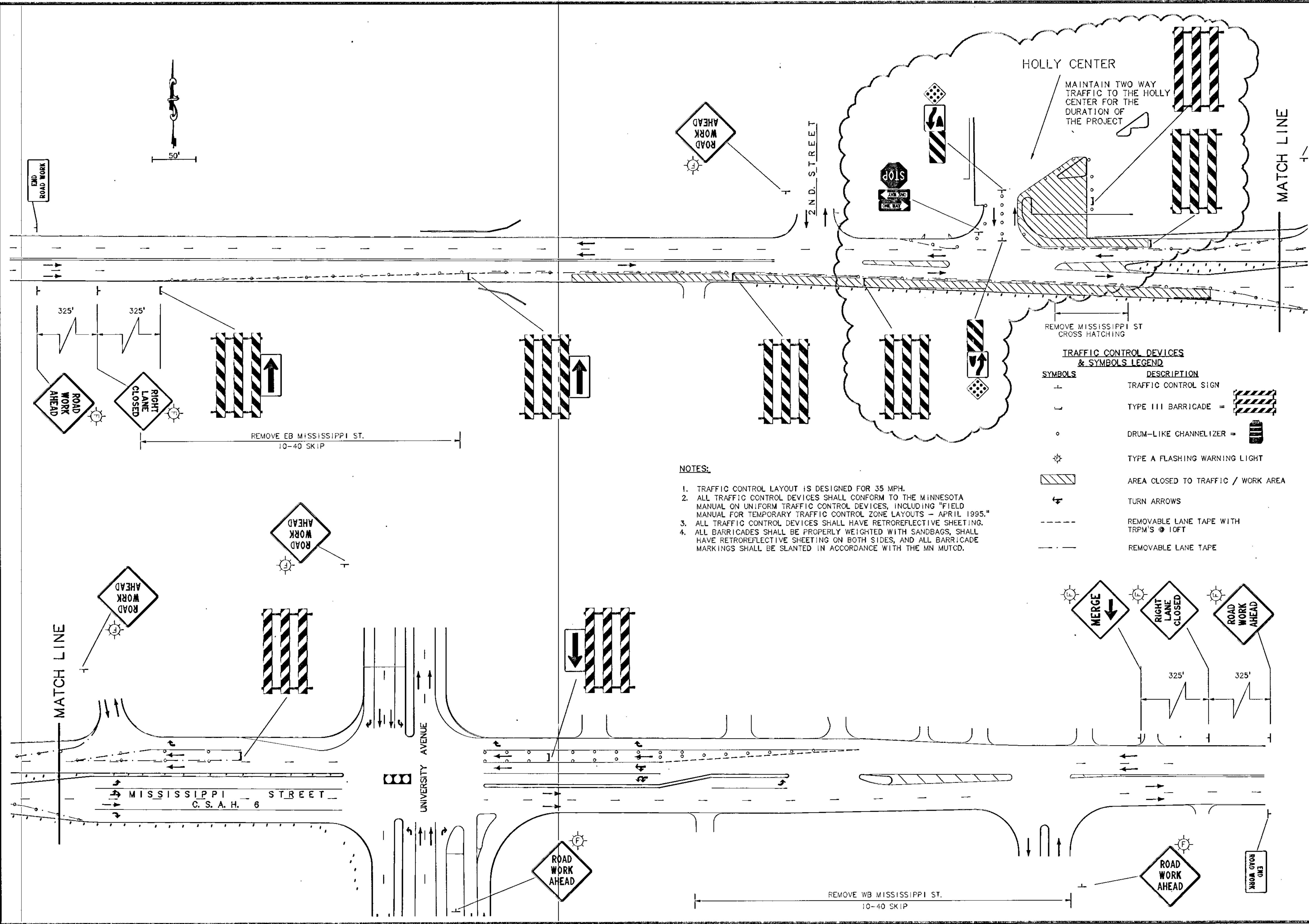
DESIGN FILE: 2881A06	DESIGN BY: JML	DWG. NAME: 2881SWK
DRAWN BY: MLS	CHECKED BY: PBD	DATE: MAY 15, 1996

I HEREBY CERTIFY THAT THIS PLAN, SPECIFICATION OR REPORT WAS PREPARED BY ME OR UNDER MY DIRECT SUPERVISION AND THAT I AM A DULY REGISTERED PROFESSIONAL ENGINEER UNDER THE STATE OF MINNESOTA STATUTES SECTION 326.02 TO 326.16.	MINN. REG. NO.: 23197	DATE: MAY 15, 1996
--	--------------------------	-----------------------

B R W	B R W INC. Thresher Square, 700 Third Street So. Minneapolis, MN 55415, Phone 612/570-0700, Fax 612/570-1378
--------------	--

CITY OF FRIDLEY MISSISSIPPI STREET (C.S.A.H. 6) ST. IMPROVEMENT PROJ. ST 96-4 SIDEWALK, MEDIAN ISLAND NOSE AND TYPICAL DRIVEWAY DETAILS	SHEET NO. 4
---	----------------

S.A.P. 02-606-09
S.A.P. 127-020-17



NOTES:

1. TRAFFIC CONTROL LAYOUT IS DESIGNED FOR 35 MPH.
2. ALL TRAFFIC CONTROL DEVICES SHALL CONFORM TO THE MINNESOTA MANUAL ON UNIFORM TRAFFIC CONTROL DEVICES, INCLUDING "FIELD MANUAL FOR TEMPORARY TRAFFIC CONTROL ZONE LAYOUTS - APRIL 1995."
3. ALL TRAFFIC CONTROL DEVICES SHALL HAVE RETROREFLECTIVE SHEETING.
4. ALL BARRICADES SHALL BE PROPERLY WEIGHTED WITH SANDBAGS, SHALL HAVE RETROREFLECTIVE SHEETING ON BOTH SIDES, AND ALL BARRICADE MARKINGS SHALL BE SLANTED IN ACCORDANCE WITH THE MN MUTCD.

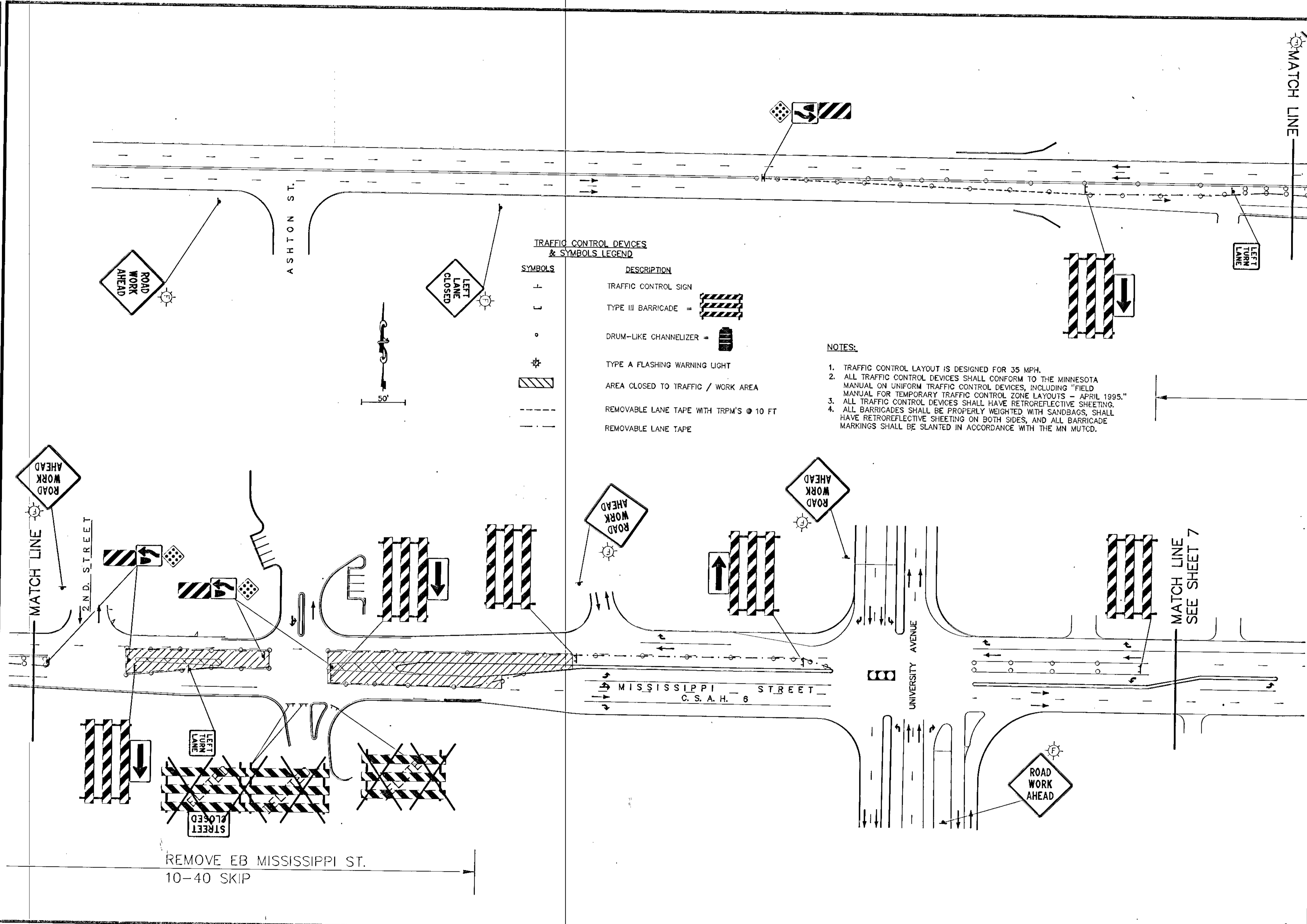
TRAFFIC CONTROL DEVICES & SYMBOLS LEGEND

SYMBOLS	DESCRIPTION
[Traffic Control Sign]	TRAFFIC CONTROL SIGN
[Type III Barricade]	TYPE III BARRICADE =
[Drum-like Channelizer]	DRUM-LIKE CHANNELIZER =
[Type A Flashing Warning Light]	TYPE A FLASHING WARNING LIGHT
[Shaded Area]	AREA CLOSED TO TRAFFIC / WORK AREA
[Turn Arrow]	TURN ARROWS
[Removable Lane Tape]	REMOVABLE LANE TAPE WITH TRPM'S @ 10FT
[Removable Lane Tape]	REMOVABLE LANE TAPE

DESIGN FILE: 2881A06 DRAWN BY: OMR/NCB CHECKED BY: JML/JRM DWG. NAME: 2881TRF4 PBD: 2881TRF4		REV. NO. 1 DATE 8/2/96 DESCRIPTION HOLLY CENTER ENTRANCE
I HEREBY CERTIFY THAT THIS PLAN, SPECIFICATION OR REPORT WAS PREPARED BY ME OR UNDER MY DIRECT SUPERVISION AND THAT I AM A DULY REGISTERED PROFESSIONAL ENGINEER IN THE STATE OF MINNESOTA UNDER SECTION 326.02 TO 326.16.		DATE: MAY 15, 1996 MINN. REG. NO. 23197
B R W INC. Thrasher Square, 700 Third Street So. Minneapolis, MN 55415, Phone 612/370-0700, Fax 612/370-1378		
CITY OF FRIDLEY MISSISSIPPI STREET (C.S.A.H. 6) ST. IMPROVEMENT PROJ. ST 96-4 TRAFFIC CONTROL PHASE 1		
SHEET NO. 5		11

DISK FILE NAME: R:\2861\MISS-SHT\2861TRF2.DWG
 PLOT DATE: Jul 10, 1996 8:06am

101-BASE



TRAFFIC CONTROL DEVICES & SYMBOLS LEGEND

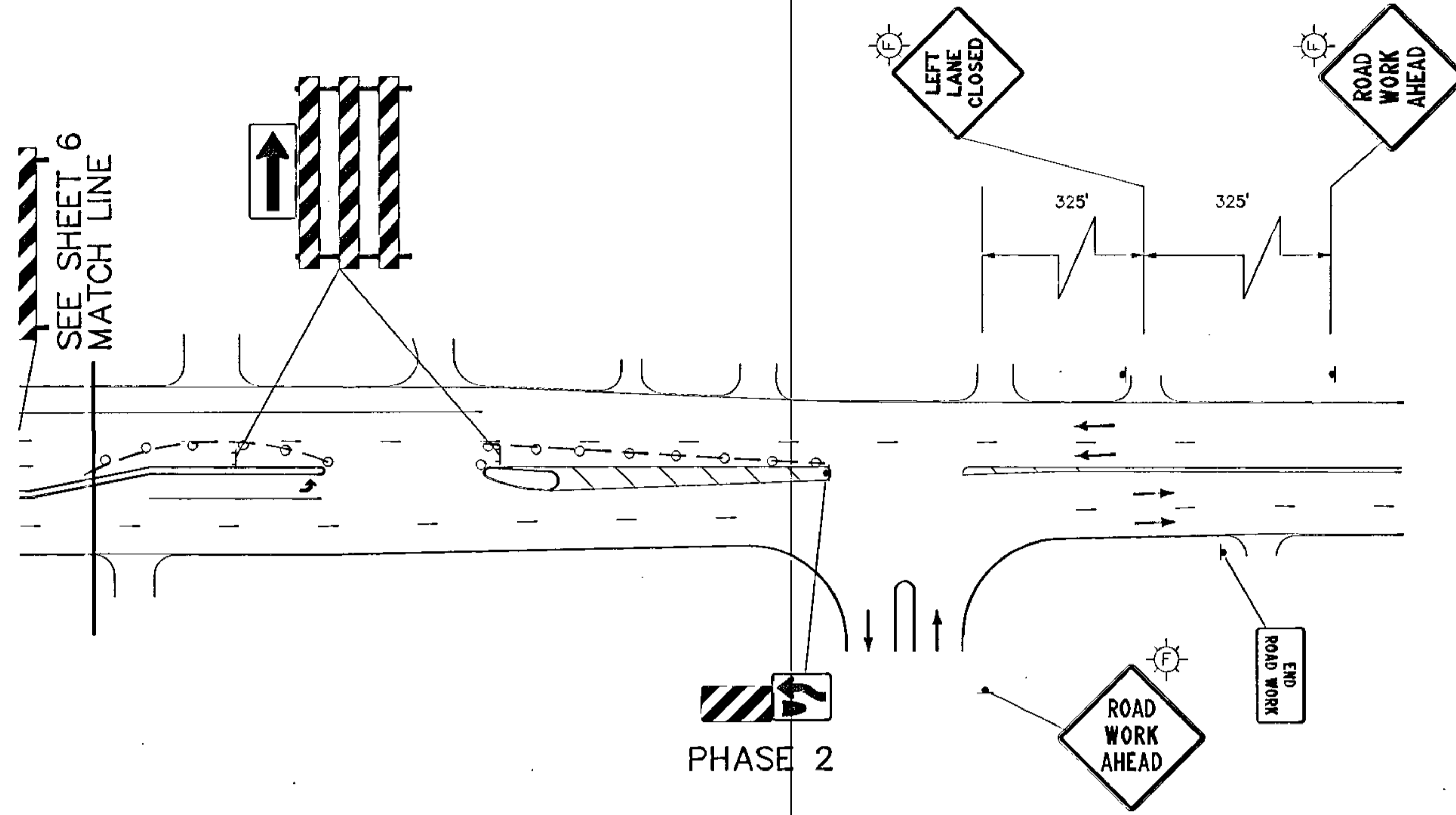
SYMBOLS	DESCRIPTION
	TRAFFIC CONTROL SIGN
	TYPE III BARRICADE
	DRUM-LIKE CHANNELIZER
	TYPE A FLASHING WARNING LIGHT
	AREA CLOSED TO TRAFFIC / WORK AREA
	REMOVABLE LANE TAPE WITH TRPM'S @ 10 FT
	REMOVABLE LANE TAPE

- NOTES:**
1. TRAFFIC CONTROL LAYOUT IS DESIGNED FOR 35 MPH.
 2. ALL TRAFFIC CONTROL DEVICES SHALL CONFORM TO THE MINNESOTA MANUAL ON UNIFORM TRAFFIC CONTROL DEVICES, INCLUDING "FIELD MANUAL FOR TEMPORARY TRAFFIC CONTROL ZONE LAYOUTS - APRIL 1995."
 3. ALL TRAFFIC CONTROL DEVICES SHALL HAVE RETROREFLECTIVE SHEETING.
 4. ALL BARRICADES SHALL BE PROPERLY WEIGHTED WITH SANDBAGS, SHALL HAVE RETROREFLECTIVE SHEETING ON BOTH SIDES, AND ALL BARRICADE MARKINGS SHALL BE SLANTED IN ACCORDANCE WITH THE MN MUTCD.

REMOVE EB MISSISSIPPI ST.
 10-40 SKIP

 B R W INC. Thresher Square, 700 Third Street So. Minneapolis, MN 55415, Phone 612/570-9700, Fax 612/570-1378	CITY OF FRIDLEY MISSISSIPPI STREET (C.S.A.H. 6) ST. IMPROVEMENT PROJ. ST96-4 TRAFFIC CONTROL PHASE 2
	SHEET NO. 6
DESIGN FILE: 2881A06	DESIGN BY: JML/JRM
DRAWN BY: MLS/NCB	CHECKED BY: PBD
DATE: 2-14-97	DATE: MAY 15, 1996
REV. NO. 1	AS-BUILT
DESCRIPTION:	DWG. NAME: 2881TRF2
I HEREBY CERTIFY THAT THIS PLAN, SPECIFICATIONS, REVISIONS, PREPARED BY ME OR UNDER MY DIRECT SUPERVISION AND THAT I AM A DULY REGISTERED PROFESSIONAL ENGINEER UNDER THE STATE OF MINNESOTA STATUTES SECTION 326.02 TO 326.16,	MINN. REG. NO. 23197

DISK FILE NAME: R:\2687\MISC-SHT\2881TRF3.DWG
 PLOT DATE: Aug 02, 1996 8:03am



**TRAFFIC CONTROL DEVICES
& SYMBOLS LEGEND**

SYMBOLS	DESCRIPTION
	TRAFFIC CONTROL SIGN
	TYPE III BARRICADE =
	DRUM-LIKE CHANNELIZER =
	TYPE A FLASHING WARNING LIGHT
	AREA CLOSED TO TRAFFIC / WORK AREA
	REMOVABLE LANE TAPE WITH TRPM'S @ 10 FT

NOTES:

1. TRAFFIC CONTROL LAYOUT IS DESIGNED FOR 35 MPH.
2. ALL TRAFFIC CONTROL DEVICES SHALL CONFORM TO THE MINNESOTA MANUAL ON UNIFORM TRAFFIC CONTROL DEVICES, INCLUDING "FIELD MANUAL FOR TEMPORARY TRAFFIC CONTROL ZONE LAYOUTS - APRIL 1995."
3. ALL TRAFFIC CONTROL DEVICES SHALL HAVE RETROREFLECTIVE SHEETING.
4. ALL BARRICADES SHALL BE PROPERLY WEIGHTED WITH SANDBAGS. SHALL HAVE RETROREFLECTIVE SHEETING ON BOTH SIDES, AND ALL BARRICADE MARKINGS SHALL BE SLANTED IN ACCORDANCE WITH THE MN MUTCD.

CITY OF FRIDLEY
 MISSISSIPPI STREET (C.S.A.H. 6)
 ST. IMPROVEMENT PROJ. ST96-4
 TRAFFIC CONTROL
 PHASE 1 / PHASE 2

SHEET NO.
 7



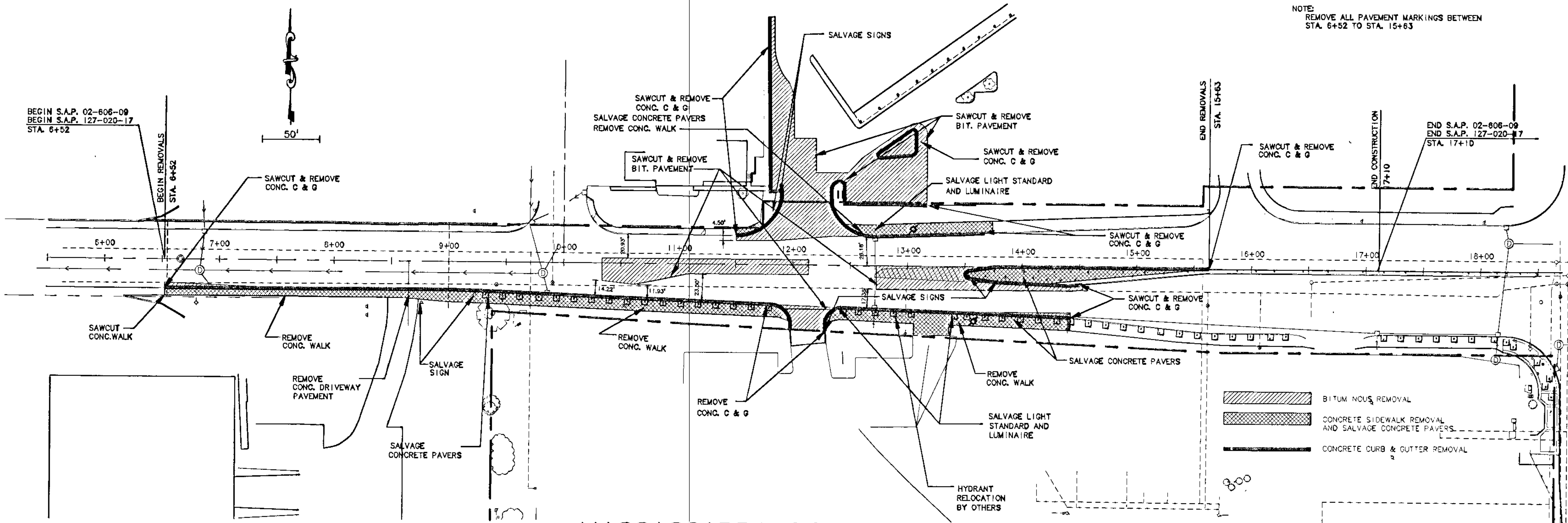
B R W INC.
 Thresher Square, 700 Third Street So.
 Minneapolis, MN 55415, Phone 612/370-0700, Fax 612/370-1378

I HEREBY CERTIFY THAT THIS PLAN, SPECIFICATION OR REPORT WAS PREPARED BY ME OR UNDER MY DIRECT SUPERVISION AND THAT I AM A DULY REGISTERED PROFESSIONAL ENGINEER UNDER THE STATUTES UNDER THE STATE OF MINNESOTA STATUTES SECTION 326.02 TO 326.16.

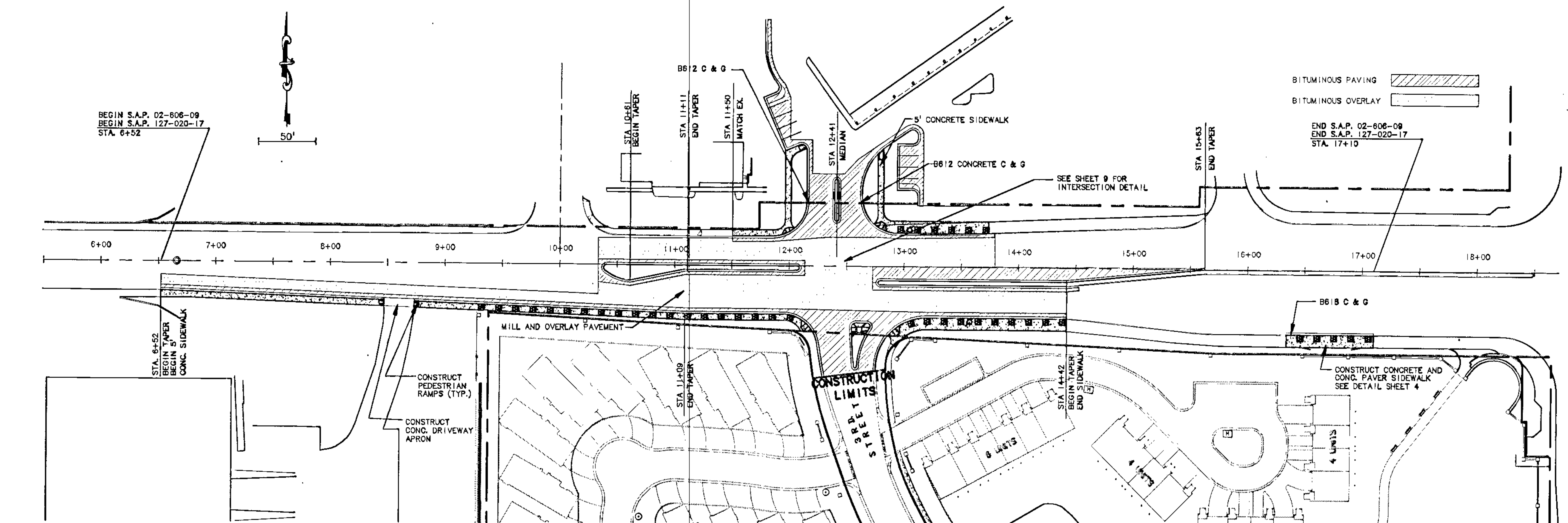
DATE: MAY 15, 1996
 MNN. REG. NO. 23197

DESIGN FILE: 2881A06	REV. NO.	DATE	DESCRIPTION
DRAWN BY: MLS/NCB	1	8/2/96	HOLLY CENTER ENTRANCE
CHECKED BY: PBD	2	8-14-97	AS-BUILT
DWG. NAME: 2881TRF3			
DATE: MAY 15, 1996			

DATE: JUN 16, 1996 8:24am



MISSISSIPPI STREET - REMOVALS



MISSISSIPPI STREET - CONSTRUCTION

S.A.P. 02-606-09
S.A.P. 127-020-17

NOTE: REMOVE ALL PAVEMENT MARKINGS BETWEEN STA. 6+52 TO STA. 15+63

DESIGN FILE: 2881A06	DESIGN BY: JML	DWG. NAME: 2881E01	DATE: MAY 15, 1996
DRAWN BY: LB, LCS	CHECKED BY: PDB	DATE: MAY 15, 1996	MINN. REG. NO. 23187
I HEREBY CERTIFY THAT THIS PLAN, SPECIFICATION OR REPORT WAS PREPARED BY ME OR UNDER MY DIRECT SUPERVISION AND THAT I AM A REGISTERED PROFESSIONAL ENGINEER UNDER THE STATE OF MINNESOTA STATUTES SECTION 326.02 TO 326.16.			
REV. NO. 1	DATE: 2-14-97	AS-BUILT	DESCRIPTION:

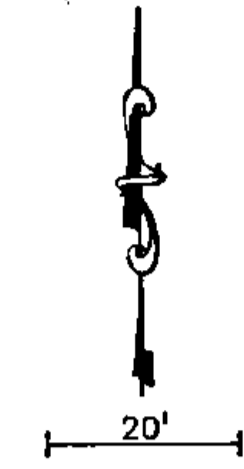
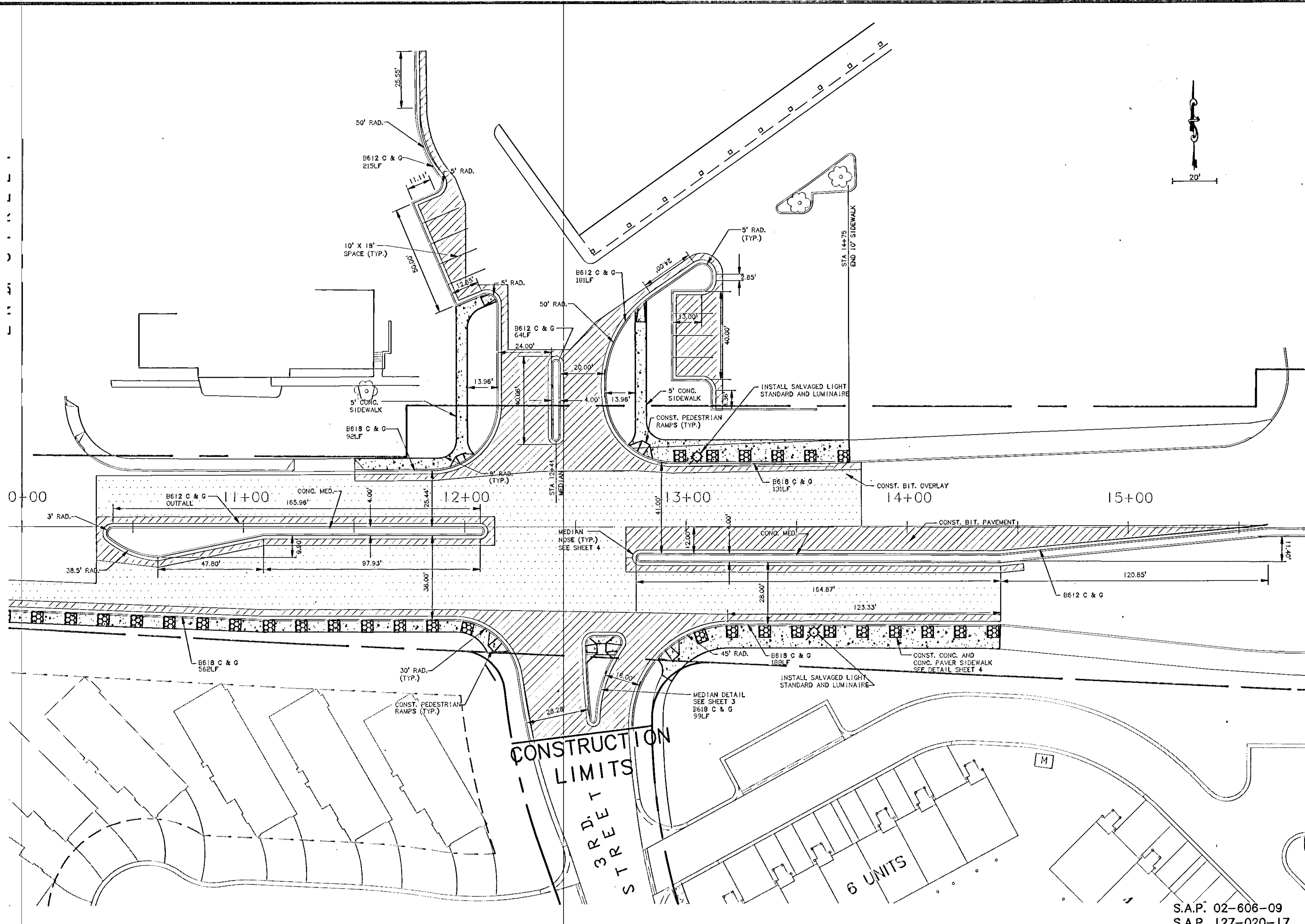
BRW
B & W INC.
Thresher Square, 700 Third Street So.
Minneapolis, MN 55415, Phone 612/570-0700, Fax 612/570-1378

CITY OF FRIDLEY
MISSISSIPPI STREET (C.S.A.H. 6)
ST. IMPROVEMENT PROJ. ST 96-4
PROPOSED REMOVAL AND CONSTRUCTION

SHEET NO. 8

DISK FILE NAME: R:\2881A\SS-SHT\2881E01.DWG
PLOT DATE: JUN 16, 1996 8:24am

MISSISSIPPI
PCORRMISS
CCORRMISS

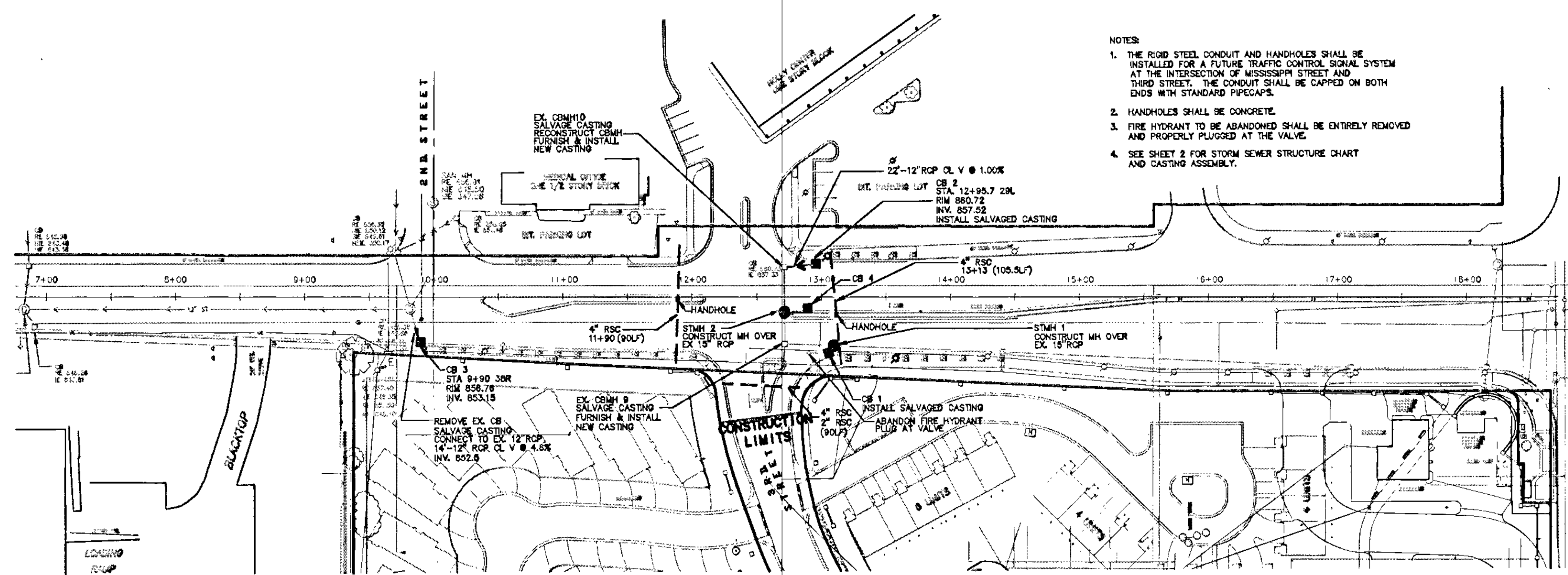


DISK FILE NAME: R:\2861\MISS-SHT\2661INTR.DWG
PLOT DATE: Jul 16, 1996 8:28am

I HEREBY CERTIFY THAT THIS PLAN, SPECIFICATIONS AND CONTRACT DOCUMENTS WERE PREPARED BY ME OR UNDER MY DIRECT SUPERVISION AND THAT I AM A DULY REGISTERED PROFESSIONAL ENGINEER UNDER THE STATUTES OF MINNESOTA STATUTES SECTION 326.02 TO 326.16.	
DESIGN FILE:	2881A06
DESIGN BY:	JML
DRAWN BY:	CKP
CHECKED BY:	LS
DWG. NAME:	2881INTR
DATE:	MAY 15, 1996
MINN. REC. NO.:	23197
DATE:	MAY 15, 1996
BRW B R W INC. Thresher Square, 700 Third Street So. Minneapolis, MN 55415, Phone 612/370-0700, Fax 612/370-1378	
CITY OF FRIDLEY MISSISSIPPI STREET (C.S.A.H. 6) ST. IMPROVEMENT PROJ. ST 96-4 INTERSECTION DETAIL	
SHEET NO.	9

S.A.P. 02-606-09
S.A.P. 127-020-17

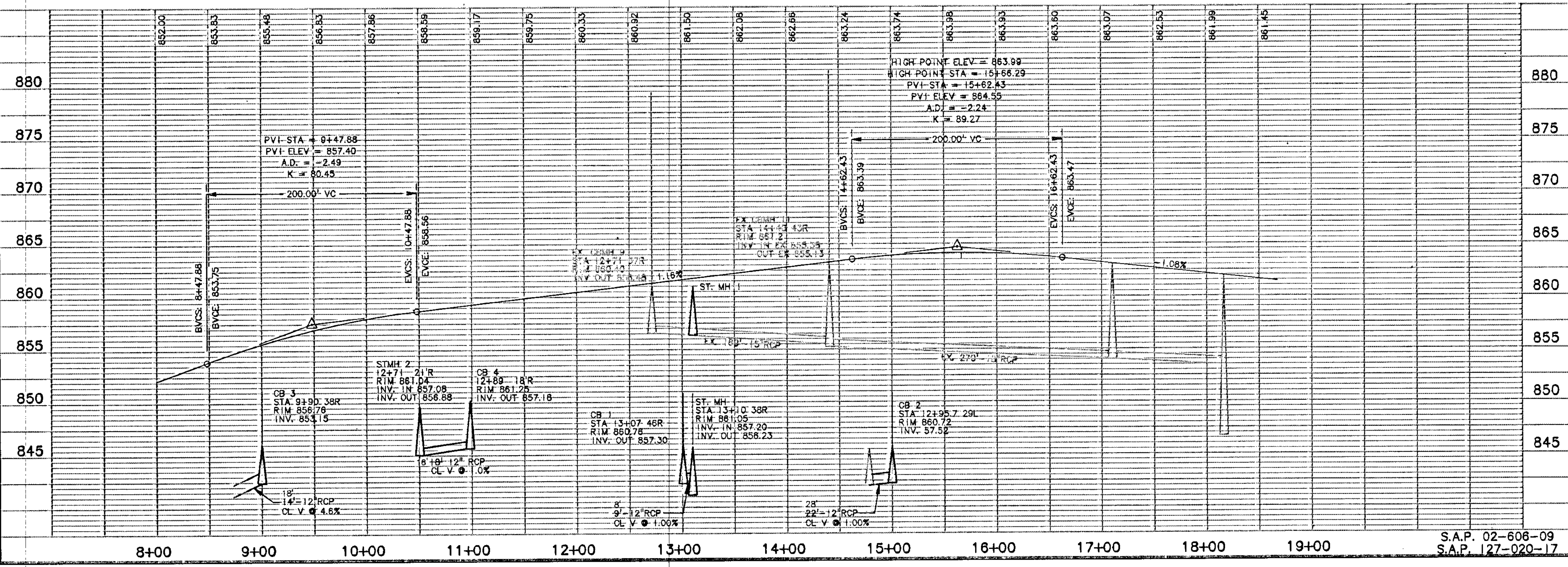
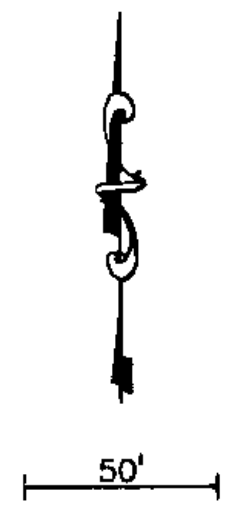
PERMISS
CONTIN
2881-STM
PROMISS



- NOTES:
1. THE RIGID STEEL CONDUIT AND HANDHOLES SHALL BE INSTALLED FOR A FUTURE TRAFFIC CONTROL SIGNAL SYSTEM AT THE INTERSECTION OF MISSISSIPPI STREET AND THIRD STREET. THE CONDUIT SHALL BE CAPPED ON BOTH ENDS WITH STANDARD PIPECAPS.
 2. HANDHOLES SHALL BE CONCRETE.
 3. FIRE HYDRANT TO BE ABANDONED SHALL BE ENTIRELY REMOVED AND PROPERLY PLUGGED AT THE VALVE.
 4. SEE SHEET 2 FOR STORM SEWER STRUCTURE CHART AND CASTING ASSEMBLY.

UNIVERSITY AVENUE
(STATE HWY. 47)

MISSISSIPPI STREET



REV. NO.	DATE	DESCRIPTION
1	2-14-97	AS-BUILT

DESIGN FILE:	2881A06
DRAWN BY:	LCS, CAP, JML
CHECKED BY:	2881-PP1
DATE:	MAY 15, 1996

I HEREBY CERTIFY THAT THIS PLAN, SPECIFICATION OR REPORT WAS PREPARED BY ME OR UNDER MY DIRECT SUPERVISION AND I AM A LICENSED PROFESSIONAL ENGINEER UNDER THE STATE OF MINNESOTA STATUTES SECTION 326.02 TO 326.16.

DATE: 2.19.97
MUNN. REG. NO. 23197

B R W

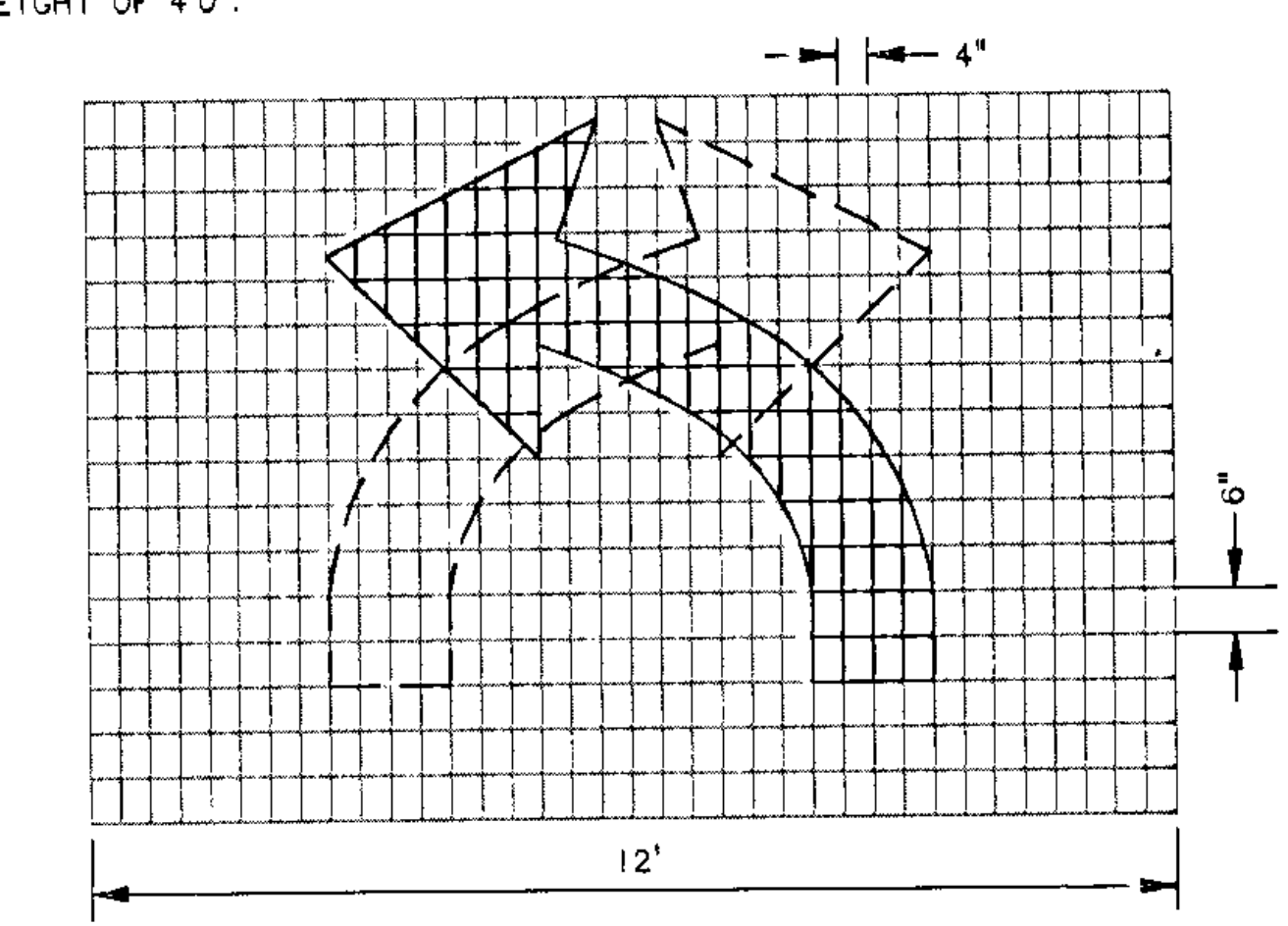
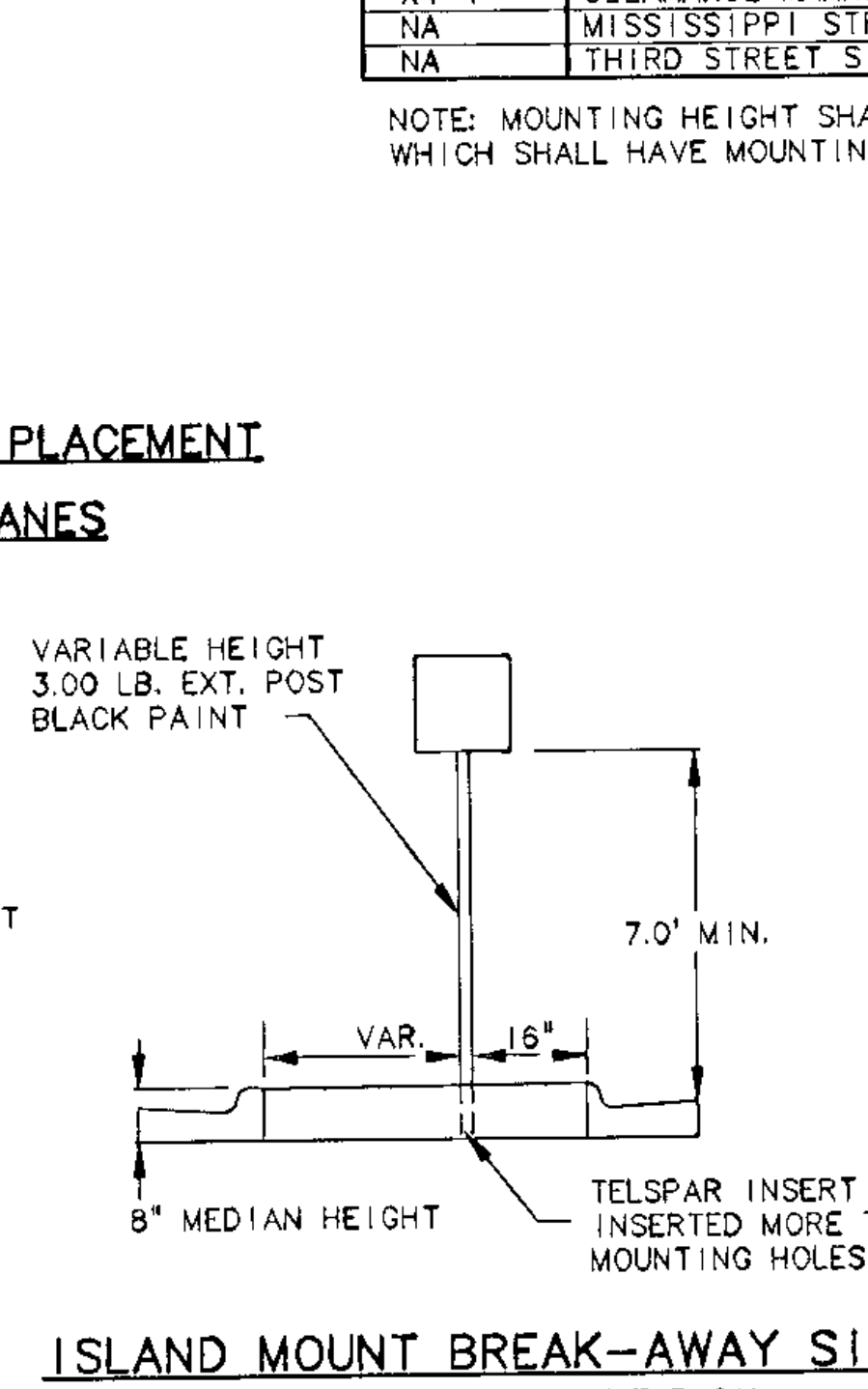
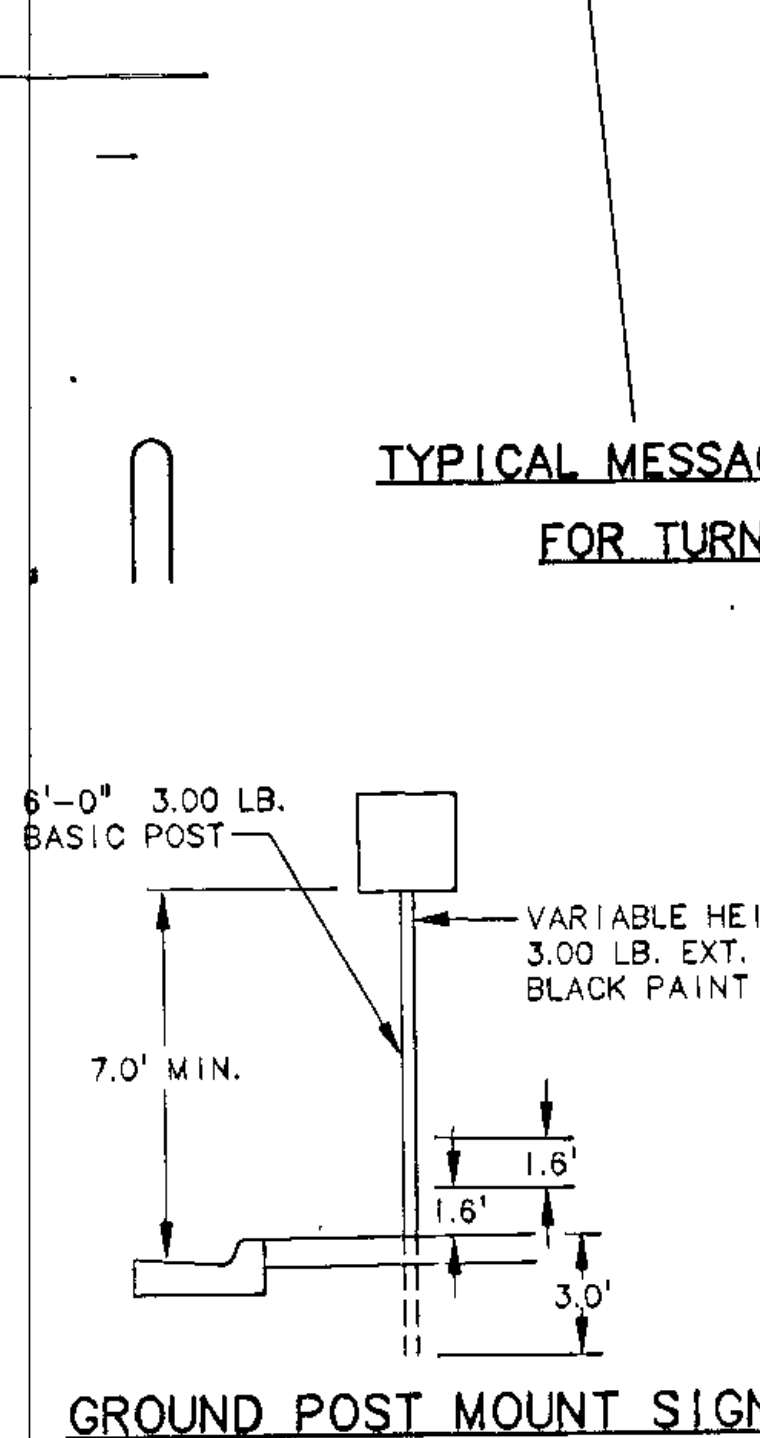
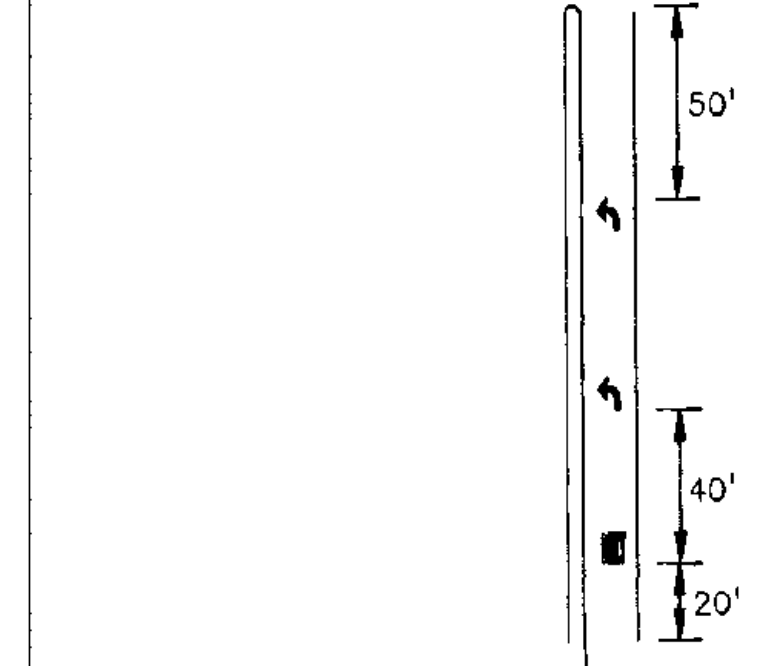
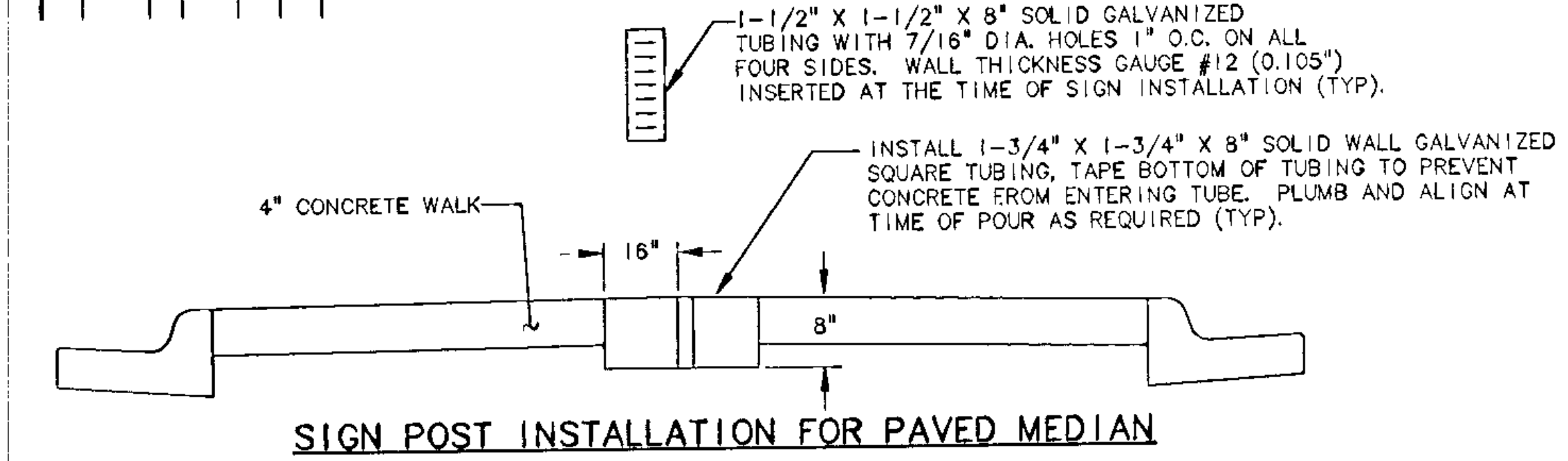
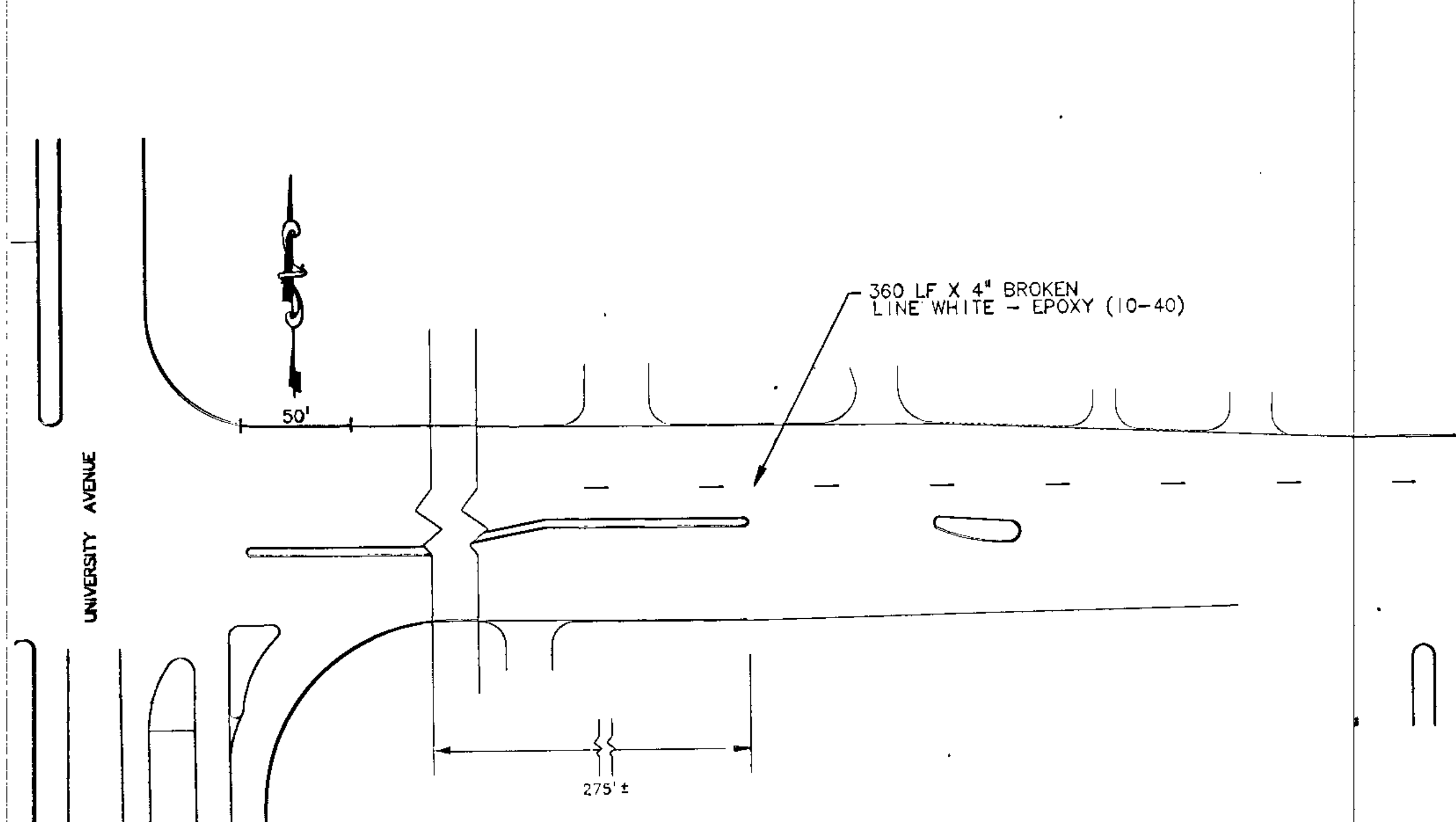
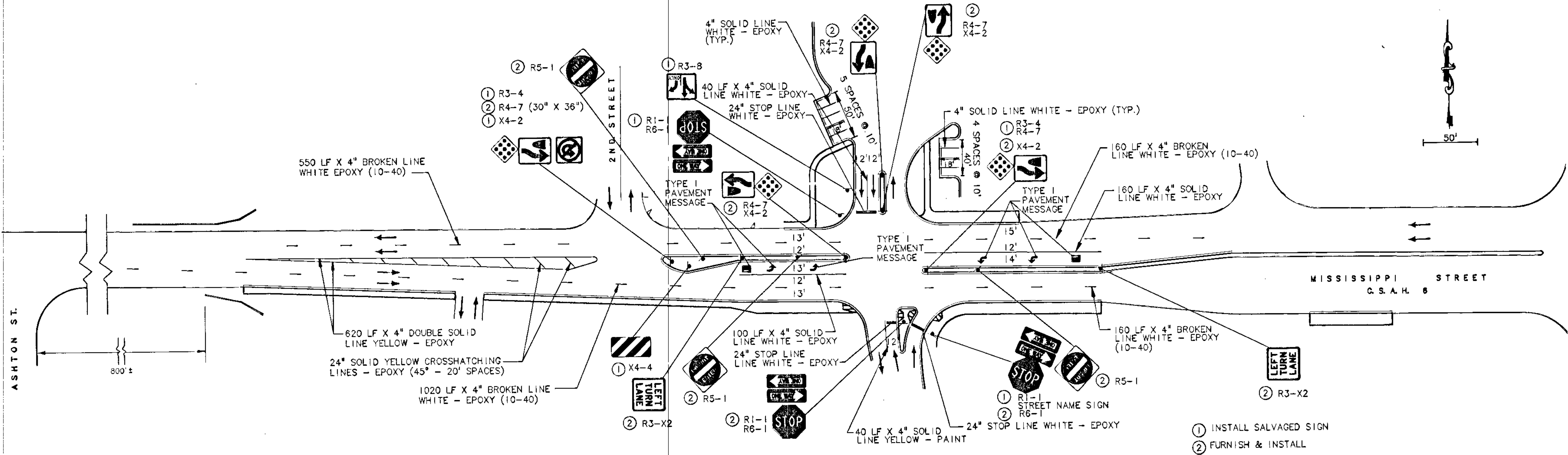
B R W INC.
Thrasher Square, 700 Third Street Se.
Minneapolis, MN 55415, Phone 612/370-0700, Fax 612/370-1378

CITY OF FRIDLEY
MISSISSIPPI STREET (C.S.A.H. 6)
ST. IMPROVEMENT PROJ. ST 96-4
PLAN & PROFILE
STA. 6+62 TO STA. 17+10
STORM SEWER

SHEET NO.
10 11

DISK FILE NAME: R:\2881\MISS-SHT\2881-PP1.DWG
PLOT DATE: Jul 16, 1996 10:31am

S.A.P. 02-606-09
S.A.P. 127-020-17



TYPE C SIGNS						
STD. SIGN NUMBER	DESCRIPTION	SIZE (INCHES)	SQ. FT.	NUMBER REQUIRED	TOTAL SQ. FT.	POSSIBLE SALVAGE
R1-1	STOP	30" x 30"	9.25	3	27.75	2
R3-X2	LEFT TURN LANE	30" x 30"	9.25	2	18.50	1
R3-4	U TURN PROHIBITION	24" x 24"	5.76	1	5.76	1
R3-8	STRAIGHT, LEFT TURN AND RIGHT TURN ONLY	38" x 30"	11.40	1	11.40	1
R4-7	KEEP RIGHT	24" x 30"	7.20	4	28.80	1
R4-7	KEEP RIGHT	30" x 38"	11.40	1	11.40	1
R5-1	DO NOT ENTER	30" x 30"	9.25	3	27.75	2
R6-1	ONE WAY	12" x 36"	4.32	6	25.92	1
X4-2	HAZARD MARKER PLATE H-1	18" x 18"	3.24	5	16.20	1
X4-4	CLEARANCE MARKER	12" x 36"	4.32	1	4.32	1
NA	MISSISSIPPI STREET SIGN	6" x 24"	1.44	1	1.44	1
NA	THIRD STREET SIGN	6" x 24"	1.44	1	1.44	1

NOTE: MOUNTING HEIGHT SHALL BE 7'0" FOR ALL SIGNS EXCEPT X4-2, AND X4-4 WHICH SHALL HAVE MOUNTING HEIGHT OF 4'0".

REV. NO.	DATE	DESCRIPTION
1	2-14-97	AS-BUILT

DESIGN FILE: 2881A06
 DESIGN BY: JML/JRM
 DRAWN BY: WLS
 CHECKED BY: 2881STGN
 PBD
 DATE: MAY 15, 1996
 MINN. REG. NO. 23197

BRW
 B R W INC.
 Thresher Square, 700 Third Street So.
 Minneapolis, MN 55415, Phone 612/370-0700, Fax 612/370-1378

CITY OF FRIDLEY
 MISSISSIPPI STREET (C.S.A.H. 6)
 ST. IMPROVEMENT PROJ. SY 96-4
 SIGNING AND STRIPING

SHEET NO. 11

DISK FILE NAME: R:\2881\MISS-SHT\2881SIGN.DWG
 PLOT DATE: Jul 17, 1996 8:08am

S.A.P. 02-606-09
 S.A.P. 127-020-17