

CONVENTIONAL SIGNS

STATE LINE	TIMBER
COUNTY LINE	BRUSH
TOWNSHIP OR RANGE LINE	ORCHARD
SECTION LINE	ROCK LEDGE
QUARTER LINE	SAND
SIXTEENTH LINE	EDGE OF CUT
RIGHT OF WAY LINE	TOE OF EMBANKMENT
PRESENT ROAD R/W LINE	CATCH BASIN
LIMITED ACCESS	MANHOLE
PROPERTY LINE (COMP. W/ W/ LINE)	TRUCK PILE
VACATED PLATTED PROPERTY	FIRE HYDRANT
CORPORATE OR CITY LIMITS	END LAMP
TOWNSHIP CENTER LINE	OTHER LAMP (BURN 4-4)
RETAINING WALL	RAILROAD CROSSING SIGN
STEAM RAILROAD	RAILROAD CROSSING BELLS
ELECTRIC RAILROAD	ELECTRIC CROSSING SIGN
RAILROAD RIGHT OF WAY LINE	CROSSING GATE
CREEK	CATTLE GUARD
RAPIDS OR WATERFALL	OVERHEAD HIGHWAY SIGN
DRY RUN	UNDERPASS (Highway Under)
DRAINAGE DITCH	ABUTMENT, WALL & PIER
HIGH TENSION LINE	BRIDGE
POWER POLE LINE	CONCRETE
TELEPHONE OR TELEGRAPH LINE	BUILDING (One Story Frame)
TELEPHONE CONDUIT	CONCRETE & STONE 11 TUB & BRICK ST. STRUCT
GUARD RAIL	EDGE
WIRE FENCE	IRON PIPE
RAILROAD SHOW FENCE	STONE MONUMENT
BOARD OR HIGHWAY SHOW FENCE	WOOD STAKE OR NAIL
STONE WALL OR FENCE	MEANDER CORNER
GRASS		
WATER PIPE		
SEWER PIPE		
DRAIN TILE		
GRAVEL PIT		
SAND PIT		
CLAY PIT		
ROCK QUARRY		
SPRINKLER		
WATER		

NOTE SECTION NUMBERS READ FROM THE SOUTH

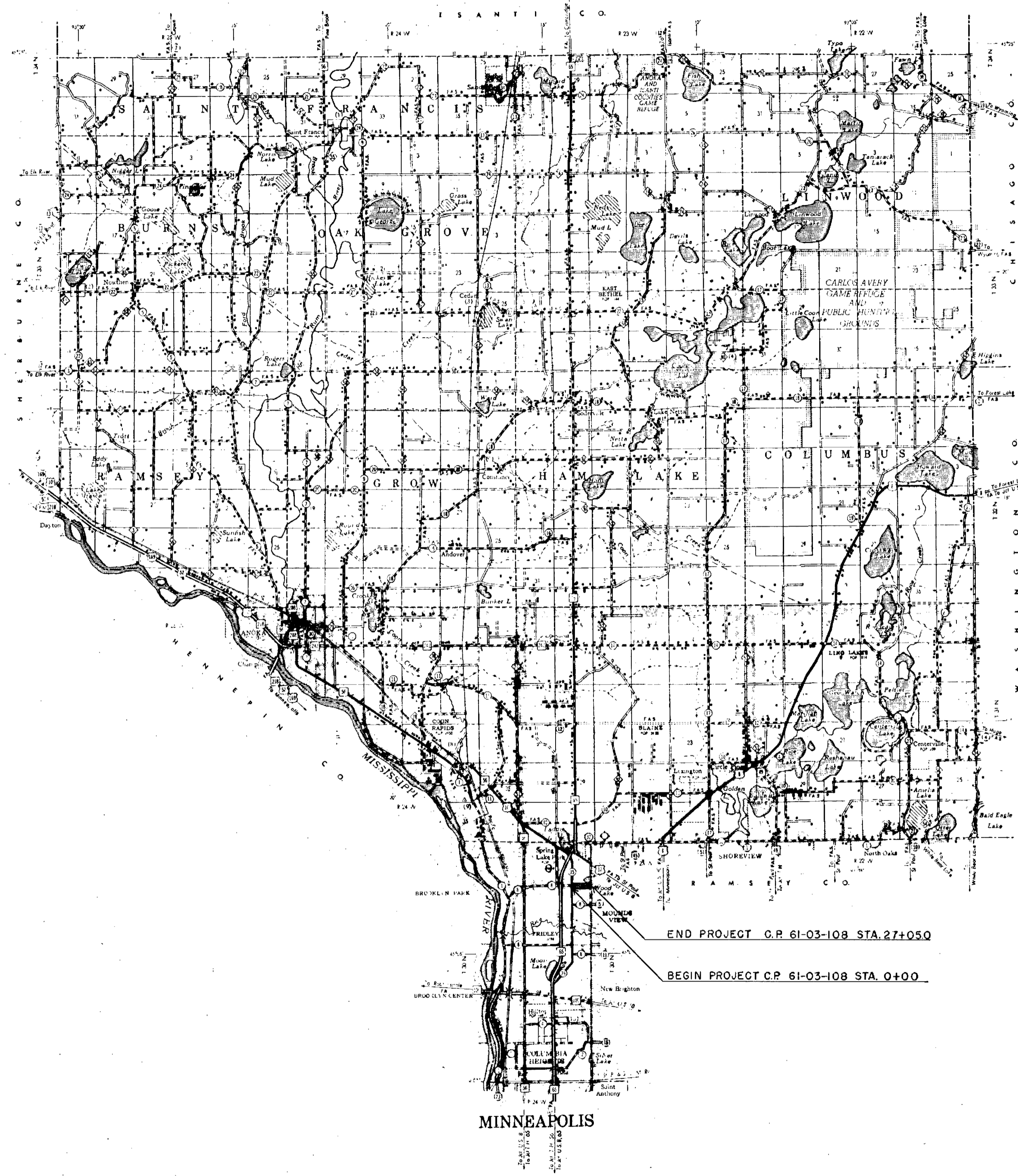


STATE OF MINNESOTA
DEPARTMENT OF HIGHWAYS
CONSTRUCTION PLAN FOR
County State Aid Highway No. 8

BETWEEN C.S.A.H. 35 AND EAST COUNTY LINE
From S 1/4 COR. SEC. 1 T-30N. R-24W To A PT. ON THE E. CO. LINE 2.40' SO. SE. COR. SEC. 1 T-30N. R-24W

GROSS LENGTH	2705.0	FEET	0.51	MILES
BRIDGES LENGTH	0.0	FEET	0.0	MILES
EXCEPTIONS LENGTH	0.0	FEET	0.0	MILES
NET LENGTH	2705.0	FEET	0.51	MILES

SCALES
Plan 1 inch = 200 Feet
PROFILE Horiz. 1 inch = 200 Feet, Vert. 1 inch = 20 Feet
WORKING PLANS Horiz. 1 inch = 100 Feet, Vert. 1 inch = 10 Feet
Cross Section 1 inch = 10 FEET
LAYOUT Scale 1 inch = Feet



MINN. PROJ. _____

INDEX OF SHEETS

Sheet No. 1	Title Sheet & Layout Map
No. 2	Est. Quantities & Typical Sec.
No. 3	Plan & Profile
No. 4 To 5	Cross Sections

DESIGN SPEED 30 M.P.H.

ALL APPLICABLE FEDERAL, STATE AND LOCAL LAWS AND ORDINANCES WILL BE COMPLIED WITH, IN THE CONSTRUCTION OF THIS PROJECT.

I HEREBY CERTIFY THAT THIS PLAN WAS PREPARED BY ME OR UNDER MY DIRECT SUPERVISION AND THAT I AM A DUTY REGISTERED PROFESSIONAL ENGINEER UNDER THE LAWS OF THE STATE OF MINNESOTA.

Earl J. Lundgren
COUNTY ENGINEER DATE 4-7-61

ANOKA COUNTY REG. NO. 2551

RECOMMENDED FOR APPROVAL _____ DISTRICT ENGINEER 19__

RECOMMENDED FOR APPROVAL _____ 19__

APPROVED _____ 19__ STATE AID ENGINEER

DEPARTMENT OF COMMERCE
BUREAU OF PUBLIC ROADS

DISTRICT ENGINEER DATE _____

Minn. Project No. _____ S.A.P. _____
State Project No. _____

— SPECIFICATIONS —
THE "SPECIFICATIONS FOR HIGHWAY CONSTRUCTION" DATED MAY 1, 1959, AND SUBMITTED FOR APPROVAL BY THE DIVISION ENGINEER OF THE BUREAU OF PUBLIC ROADS ON MARCH 26, 1959, SHALL GOVERN.

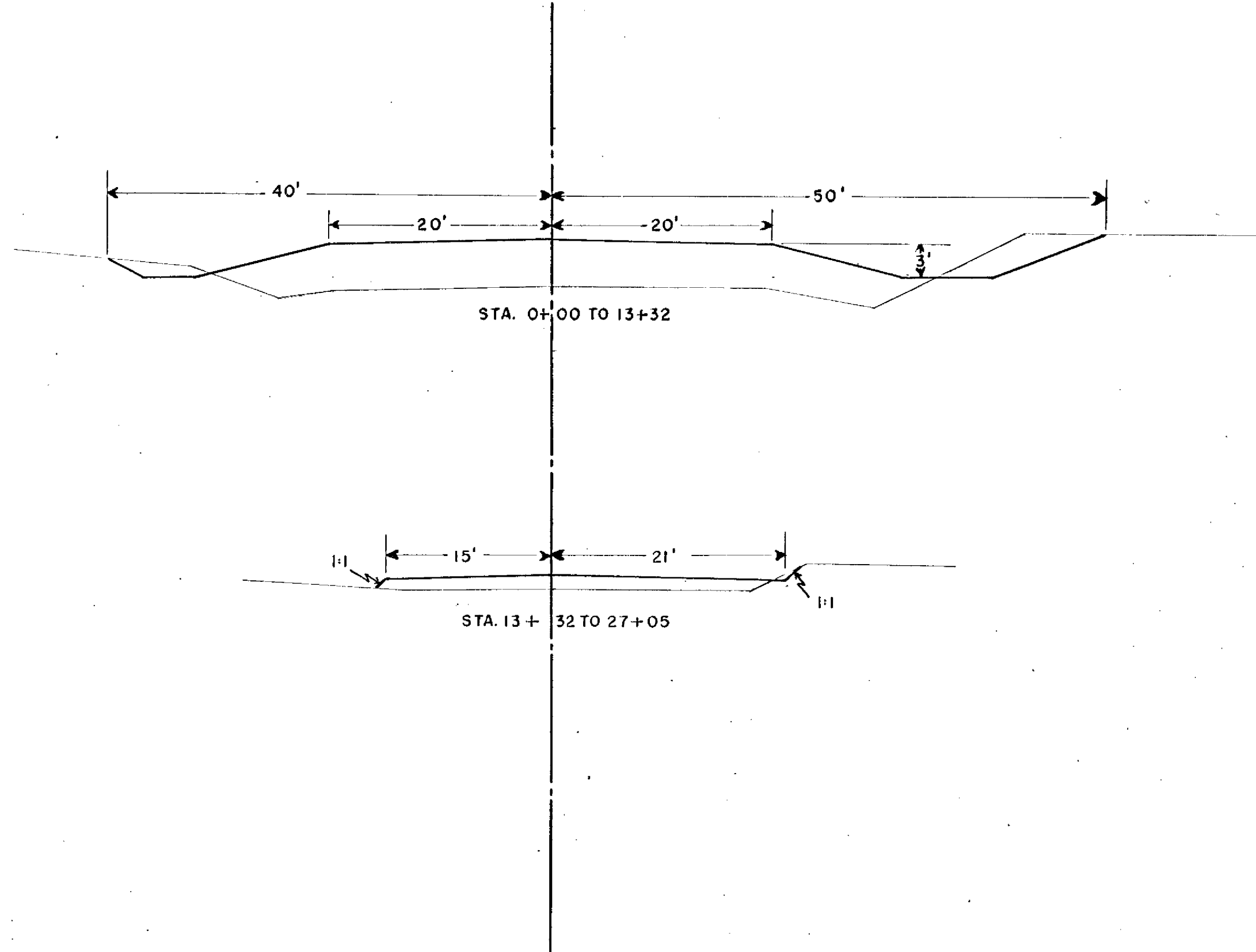
FED. ROAD DIST. NO.	STATE	FED. AID PROJ. NO.	SEC.	FISCAL YEAR	SHEET NO.	TOTAL SHEETS
4	MINN.					

ESTIMATED QUANTITIES

SPECIFICATION NO.	ITEM	UNIT	TOTAL ESTIMATED QUANTITIES
2101.501	CLEARING	ACRE	0.35
2101.502	CLEARING	TREE	31
2101.506	GRUBBING	ACRE	0.40
2101.507	GRUBBING	TREE	21
2104.501	REMOVE PORTABLE CULV.	LIN. FT.	30
2105.501	CLASS "A" EXG.	CU. YDS.	4740
2501.501	PIPE CULV. EXG.	CU. YDS.	34
2501.511-15	FBI. 15" C.M.P. CULV.	LIN. FT.	60
2501.521	FBI. 24" S.C.R. CULV. CL. II	LIN. FT.	50
2515.521	FBI. APRONS FOR 24" S.C.R.	APRON	2
501.601	SAND GRAVEL SUB FOUNDATION	CU. YDS. (V.M.)	12
* 2574.501	ROAD SIDE SEEDING	ACRE	1.55
** 2575.501	SURFACE MULCHING TYPE I (7)	TON	.9
** 2575.506	SURFACE MULCHING TYPE 6 (7)	GALLON	90
2130.501	WATER	M-GALLON	5
2576.501	SODDING	SQ. YD.	93
2207.503	BIT. MATERIAL AC-1 (200-300PEN)	GAL.	18,488
2207.503	BIT. MATERIAL FOR FOG (M.C.O.J.2)	GAL.	925
2207.512	BIT. STAB. BASE 4" THICK	SQ. YD.	9244
2356.505	BIT. MATERIAL FOR SEAL COAT AC-1 (120-150PEN)	GALLON	2310
2356.507	SEAL COAT AGG.	CU. YD. (V.M.)	83

* COUNTY WILL FURNISH SEED ON PROJECT (60 LBS. PER ACRE)
 ** 2575.501 & 2575.506 TO BE USED FOR TYPE 7 MULCHING ON INSLOPES.
 ALL AREAS TO BE SODDED WILL BE COVERED WITH MINIMUM OF 3 INCHES OF TOPSOIL OR CLAY FOUND WITHIN THE LIMITS OF THIS PROJECT. THIS WILL BE CONSIDERED INCIDENTAL TO CLASS "A" EXG.

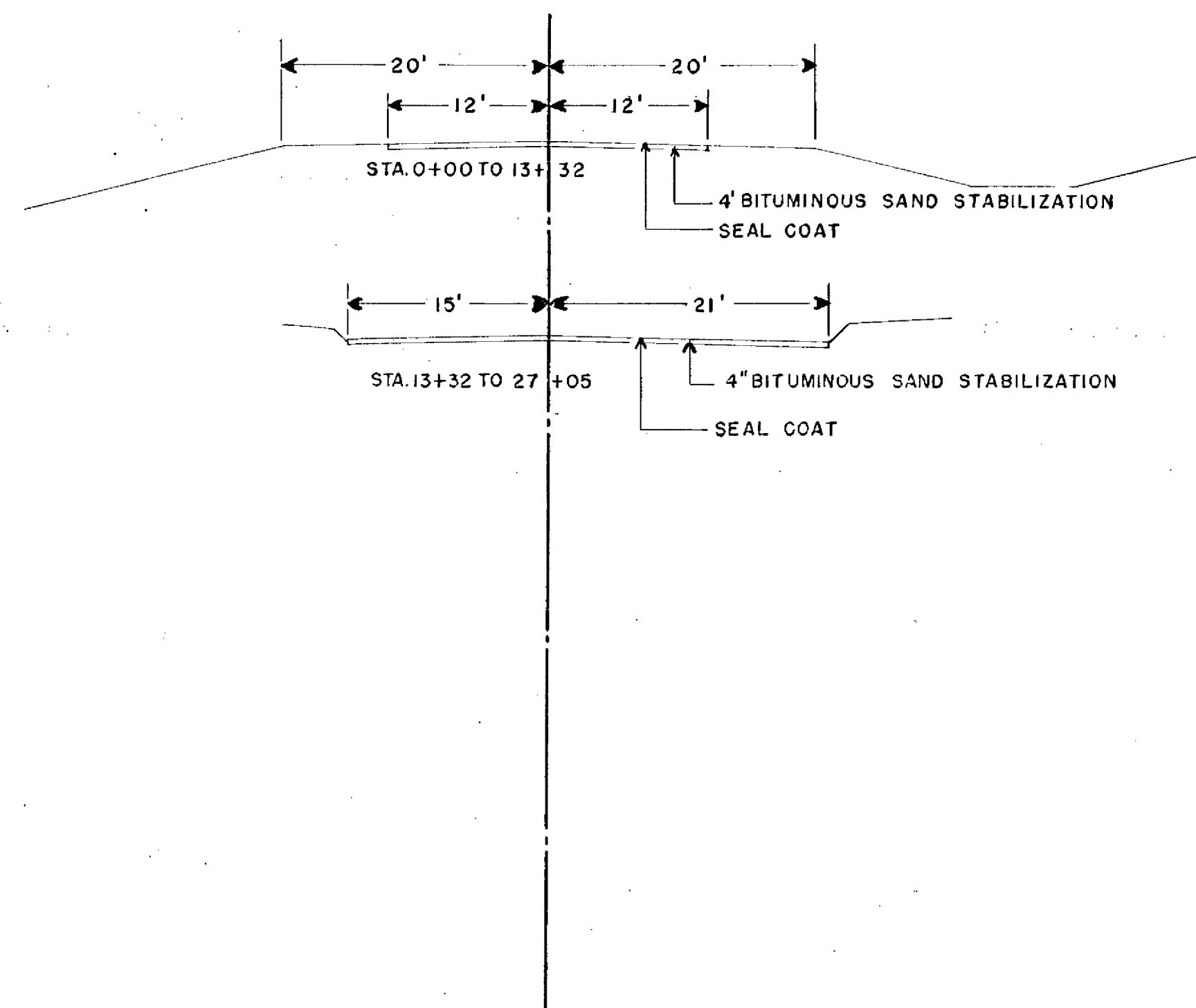
TYPICAL GRADING SECTIONS



SPECIAL DETAILS

ROAD BED TO BE BLADED TO 1/4 PER FT. PITCH DURING FINISHING OPERATIONS.
 THE UPPER 1.0' OF NATURAL SOIL IS CONSIDERED UNSUITABLE FOR USE IN THE UPPER 1.0' OF ROADWAY. THIS PORTION SHALL BE PLACED BELOW THE UPPER 1.0' OF EMBANKMENT DURING CONSTRUCTION.

TYPICAL BASE & SURFACE SECTIONS



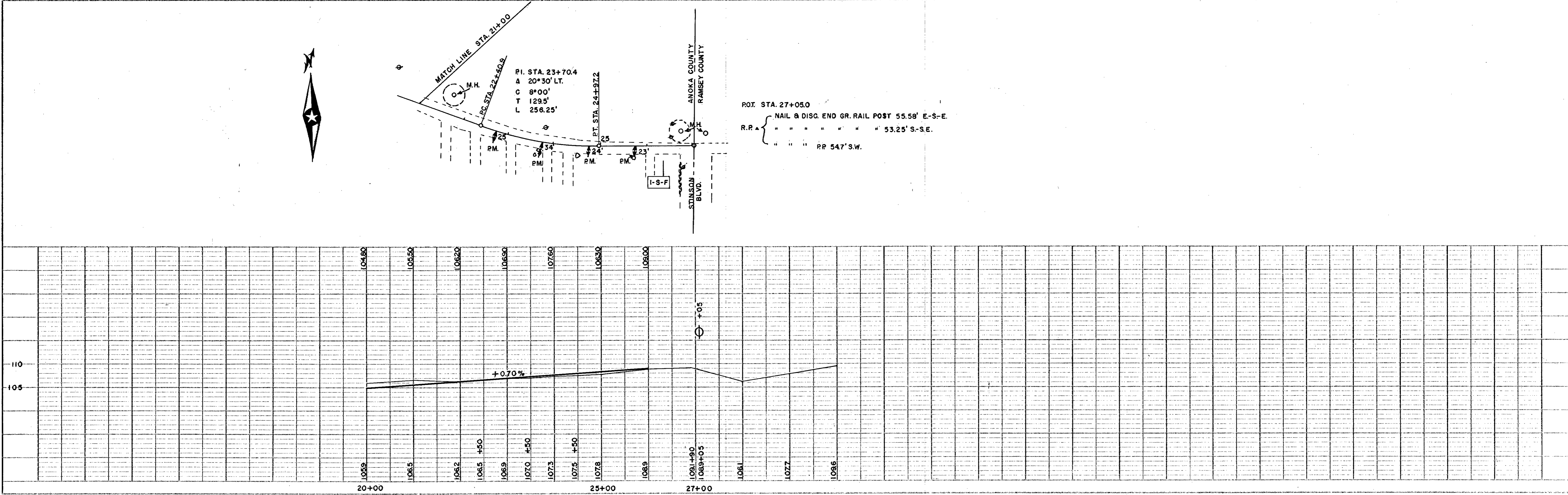
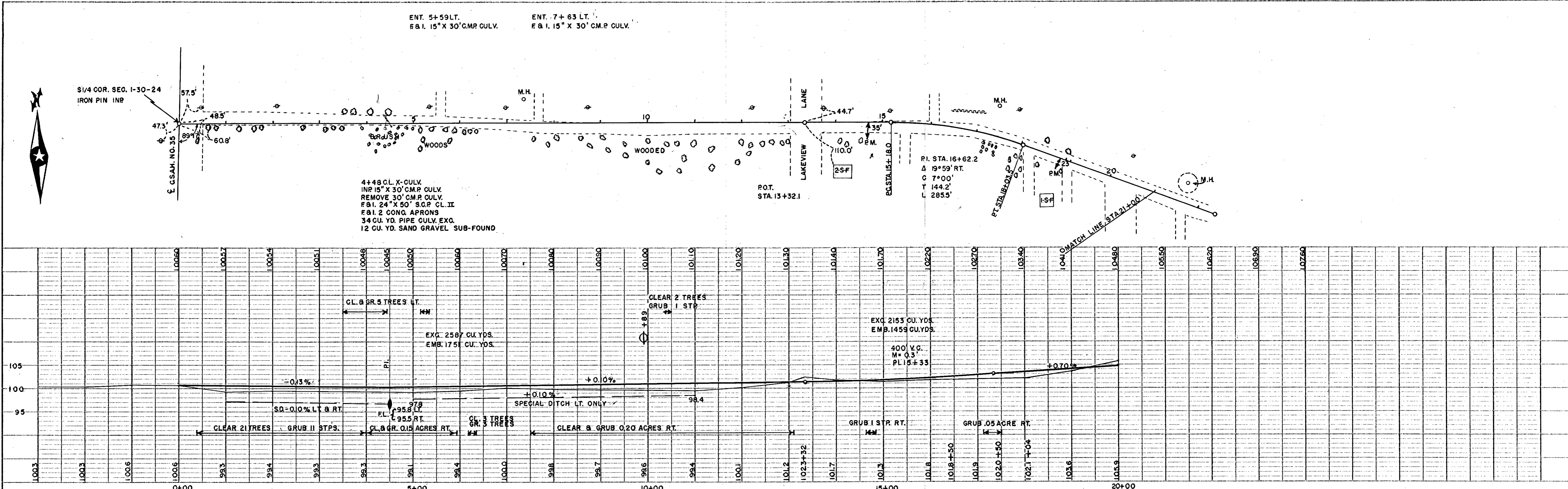
STANDARD DETAIL PLATES

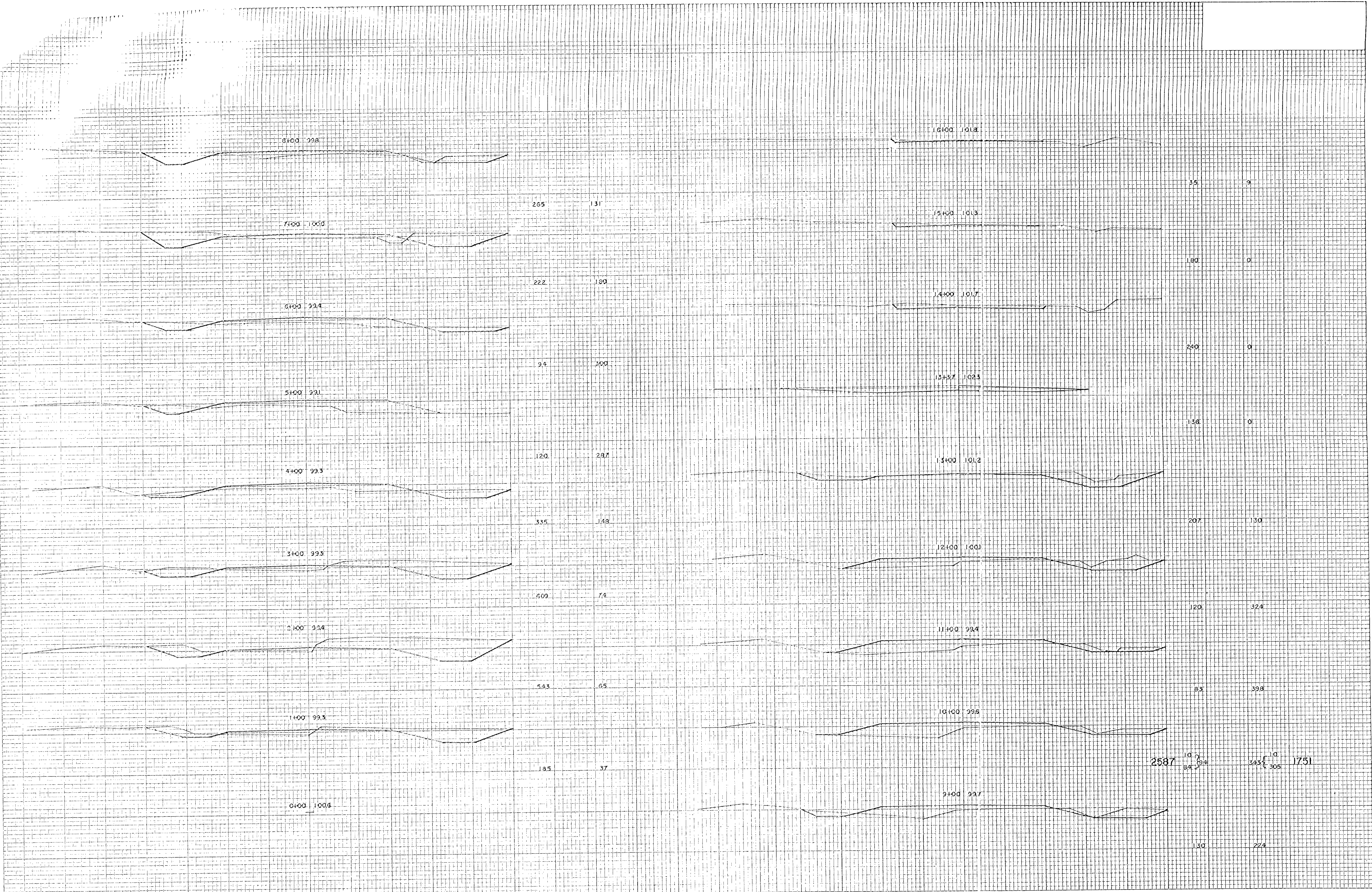
Standard Detail Plates issued October 1, 1947 and approved by the Public Roads Administration April 1, 1948, with revisions Approved Feb. 24, 1949, shall govern.

PLATE NO.	STANDARD DETAIL PLATES
8000A8001	STANDARD SIGNS AND BARRICADES
8008A	
9000	APPROACHES AND ENTRANCES

PLAN
 SURVEYED _____
 PLOTTED _____
 NOTE BOOK ALIGNMENT CHECKED _____
 RT. OF WAY CHECKED _____

PROFILE
 SURVEYED _____
 PLOTTED _____
 GRADES CHECKED _____
 STAKE PLACEMENTS CHECKED _____





8+00 998

7+00 1060

6+00 994

5+00 991

4+00 993

3+00 993

2+00 994

1+00 993

0+00 1008

265

131

222

180

94

300

120

287

335

148

609

74

543

65

185

37

16+00 1018

15+00 1013

14+00 1017

13+37 1023

13+00 1012

12+00 1001

11+00 994

10+00 996

9+00 997

35

9

180

0

240

0

136

0

207

130

120

324

83

398

2587

10
84

10
305

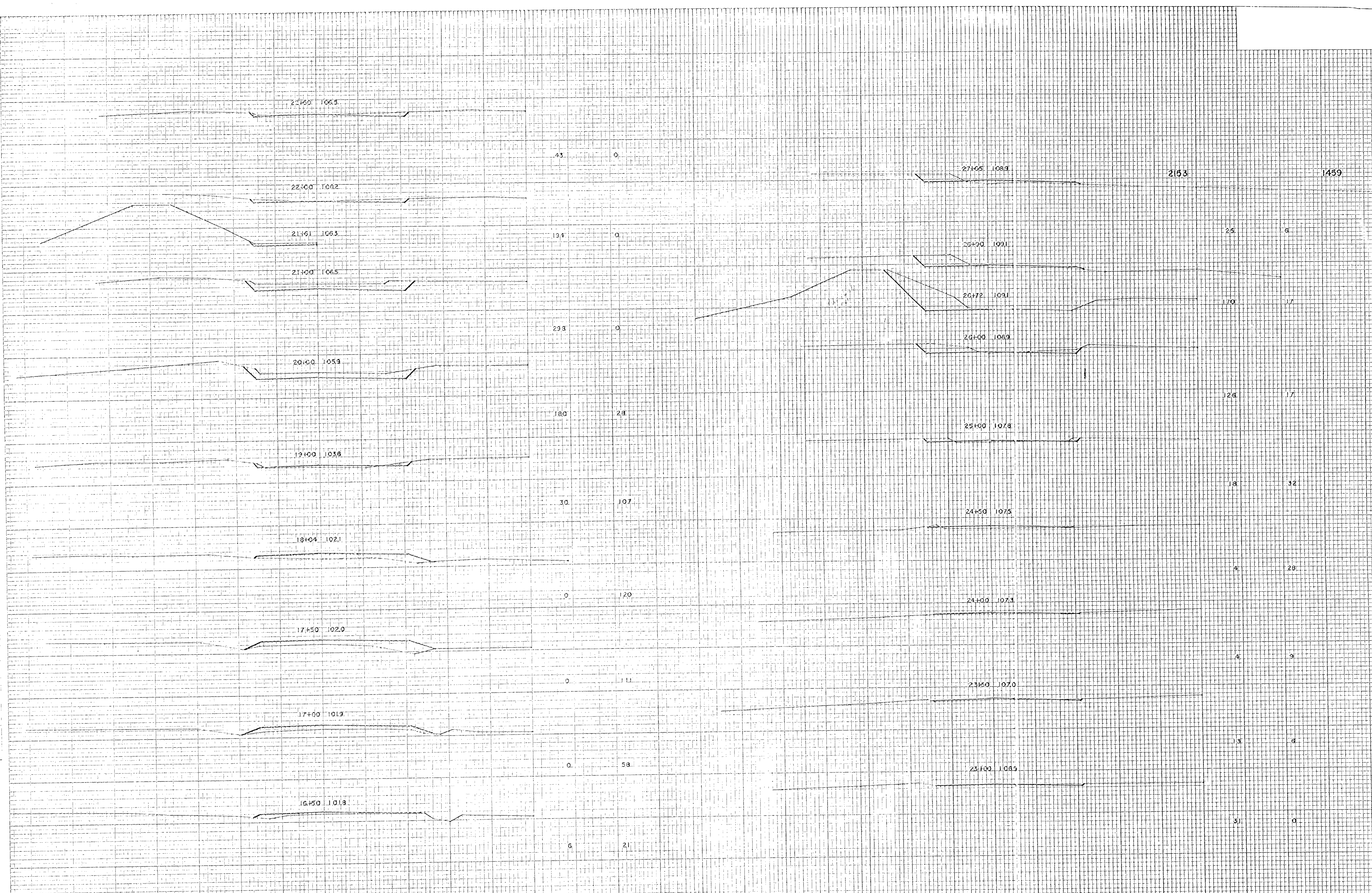
1751

130

224

PLAN
 SURVEY
 NO. 100

ORIGINAL
 SURVEY
 NO. 100



2

PLAN
 SURVEYED BY _____ DATE _____
 PLOTTED BY _____
 NOTE BOOK NO. _____
 CHECKED BY _____
 RT. OF WAY CHECKED BY _____

PROFILE
 SURVEYED BY _____ DATE _____
 PLOTTED BY _____
 NOTE BOOK NO. _____
 CHECKED BY _____
 STRUCTURE NOTATION CHECKED BY _____

