

ANOKA COUNTY, MN LINWOOD TOWNSHIP

CP 94-45-26

CONSTRUCTION PLANS FOR CSAH 26 (MARTIN LAKE ROAD) BETWEEN INDUS STREET N.E. AND CSAH 22 (VIKING BOULEVARD N.E.)

CONSTRUCTION PLANS: GRADING, AGGREGATE BASE, BITUMINOUS SURFACING,
SIGNAGE, STRIPING, & RESTORATION

MARTIN LAKE DRIVE N.E.

GROSS LENGTH = 0.926 MILES OR 4890 FEET
BRIDGE LENGTH = 0.000 MILES OR 0.00 FEET
NET LENGTH = 0.926 MILES OR 4890 FEET
REF. POINT =

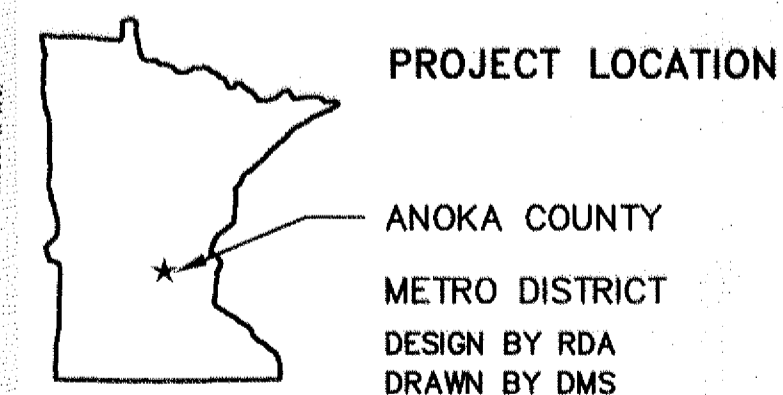
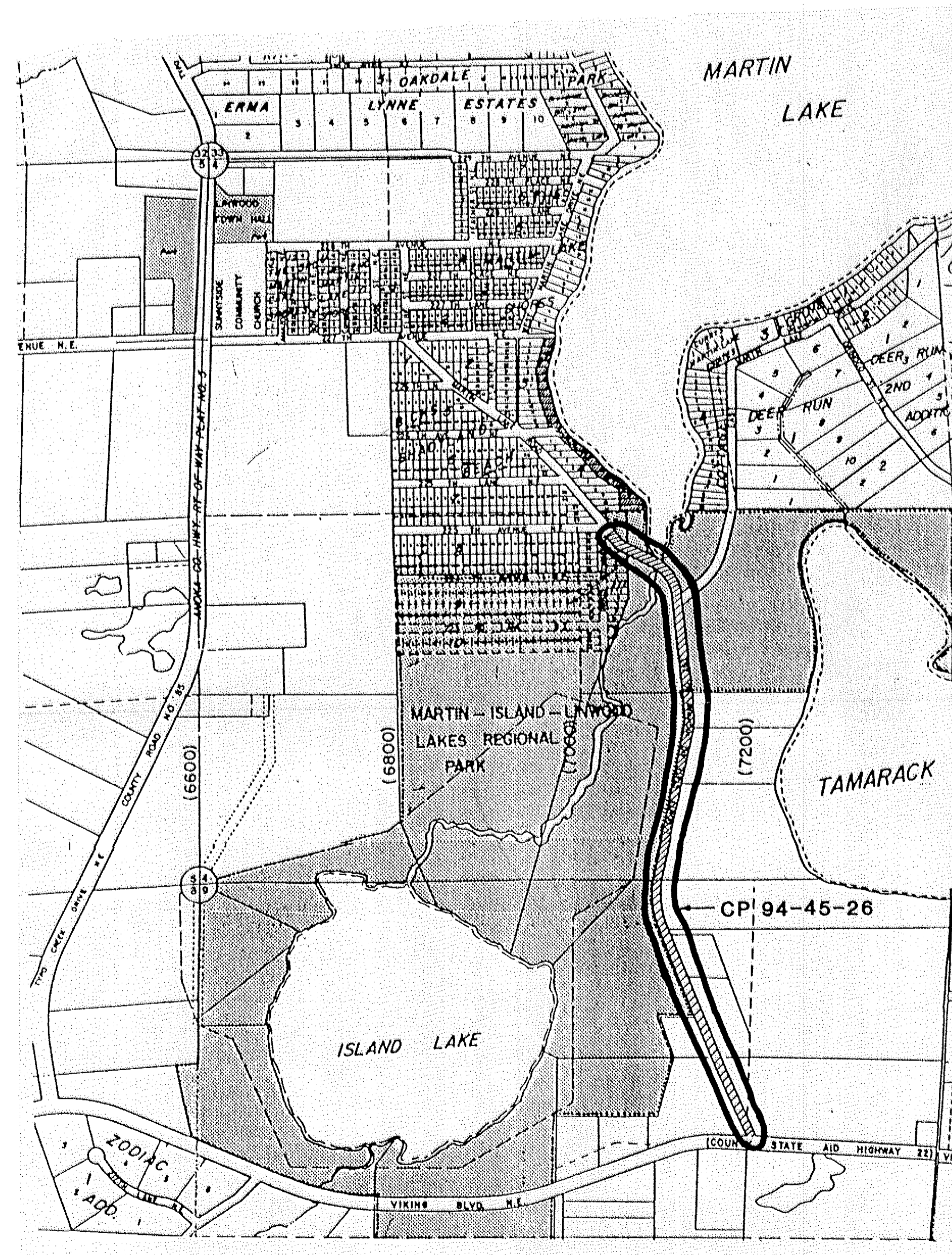
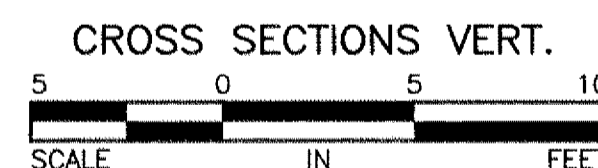
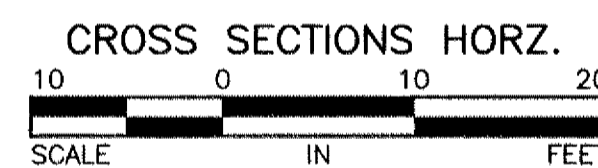
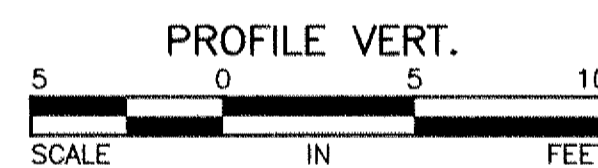
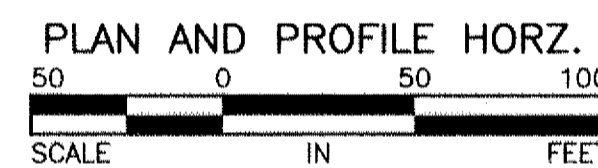
GOVERNING SPECIFICATIONS

THE 1988 EDITION OF THE MINNESOTA DEPARTMENT OF TRANSPORTATION "STANDARD SPECIFICATIONS FOR CONSTRUCTION" AS AMENDED BY "SUPPLEMENTAL SPECIFICATIONS" DATED MAY 2, 1994, SHALL APPLY.
ALL FEDERAL, STATE AND LOCAL LAWS, REGULATIONS, AND ORDINANCES SHALL BE COMPLIED WITH IN THE CONSTRUCTION OF THIS PROJECT.

SHEET INDEX

- | | |
|---|---|
| 1 | TITLE SHEET |
| 2 | ESTIMATED QUANTITIES, SCHEDULES, TYPICAL SECTION, DETAILS |
| 3 | PLAN AND PROFILE STATION 35+35 - 39+00 |
| 4 | PLAN AND PROFILE STATION 49+00 - 63+00 |
| 5 | PLAN AND PROFILE STATION 63+00 - 77+00 |
| 6 | PLAN AND PROFILE STATION 77+00 - END |

SCALES



DESIGN DESIGNATION

PROJECT	STA. TO STA.	ADT (1996)	ADT (2016)	R VALUE	TON DESIGN	DESIGN SPEED	NUMBER OF LANES	NUMBER OF PARKING LANES
CP 94-45-26		—	—	—	7	—	2	0

DESIGN SPEED BASED ON STOPPING SIGHT DISTANCE
HEIGHT OF EYE = 3.5'
HEIGHT OF OBJECT = 0.5'
EXCEPTION TO DESIGN SPEED FROM STA TO STA

DESIGN BY:
CERTIFIED BY:

Lawrence G. Koshak 11261 5/7/96
PROFESSIONAL ENGINEER Reg. No. Date
LAWRENCE G. KOSHAK
HAKANSON ANDERSON ASSOCIATES, INC.

RECOMMENDED FOR APPROVAL

Joseph E. Dillmy 5/22/96
CHAIRMAN LINWOOD TOWNSHIP Date

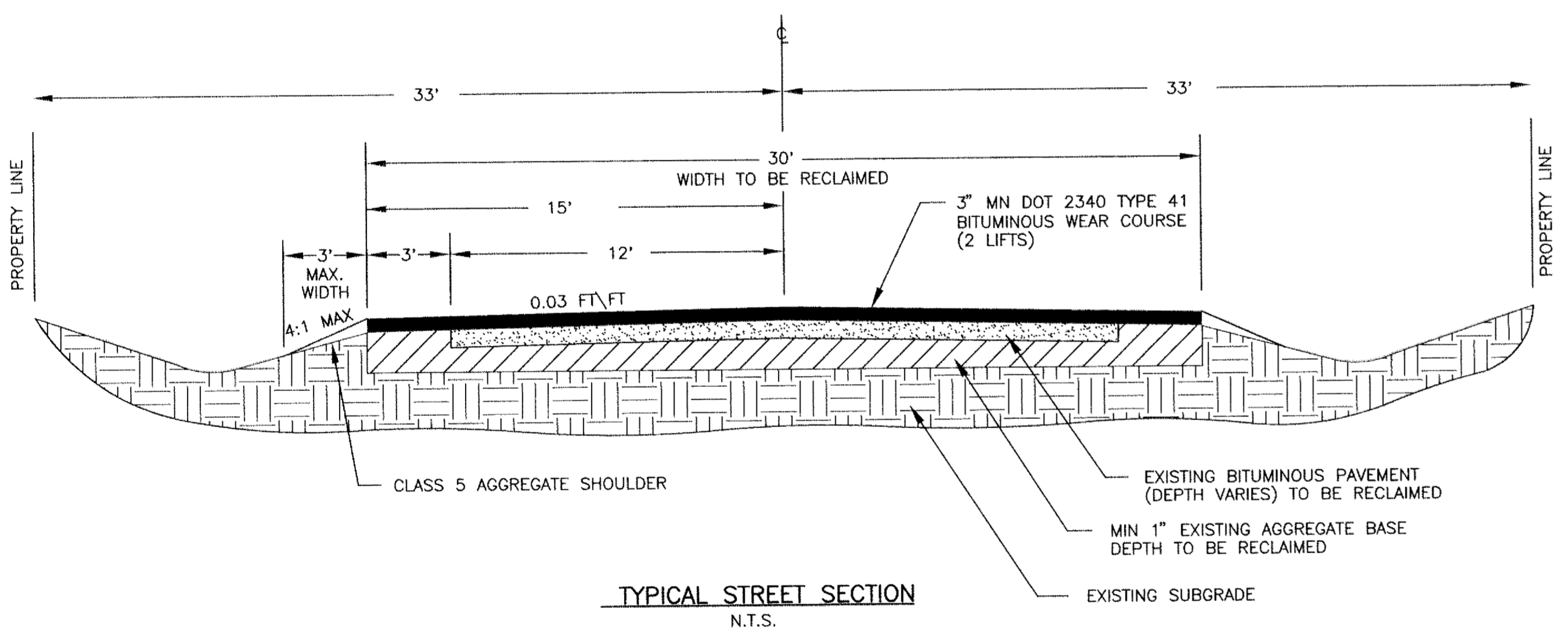
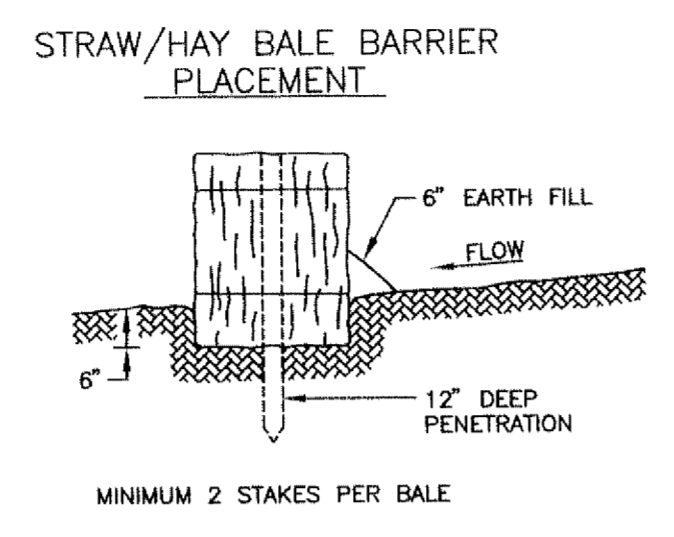
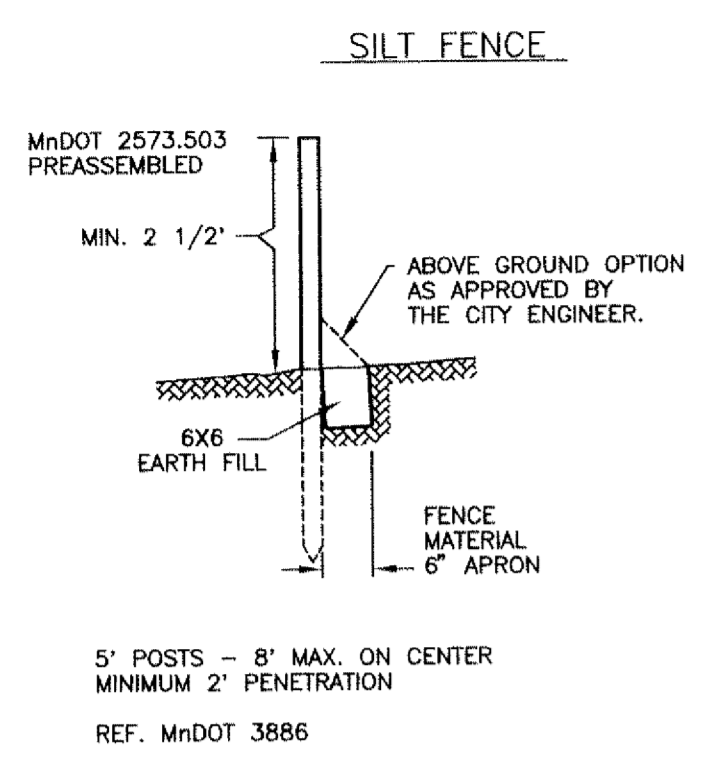
RECOMMENDED FOR APPROVAL

James Olson 12183 6/1/96
COUNTY ENGINEER, ANOKA, COUNTY Reg. No. Date

Hakanson Anderson Assoc., Inc.
Engineers, Surveyors & Landscape Architects
222 Maroon Street, Anoka, Minnesota 55303
612-427-5880 FAX 612-427-3401

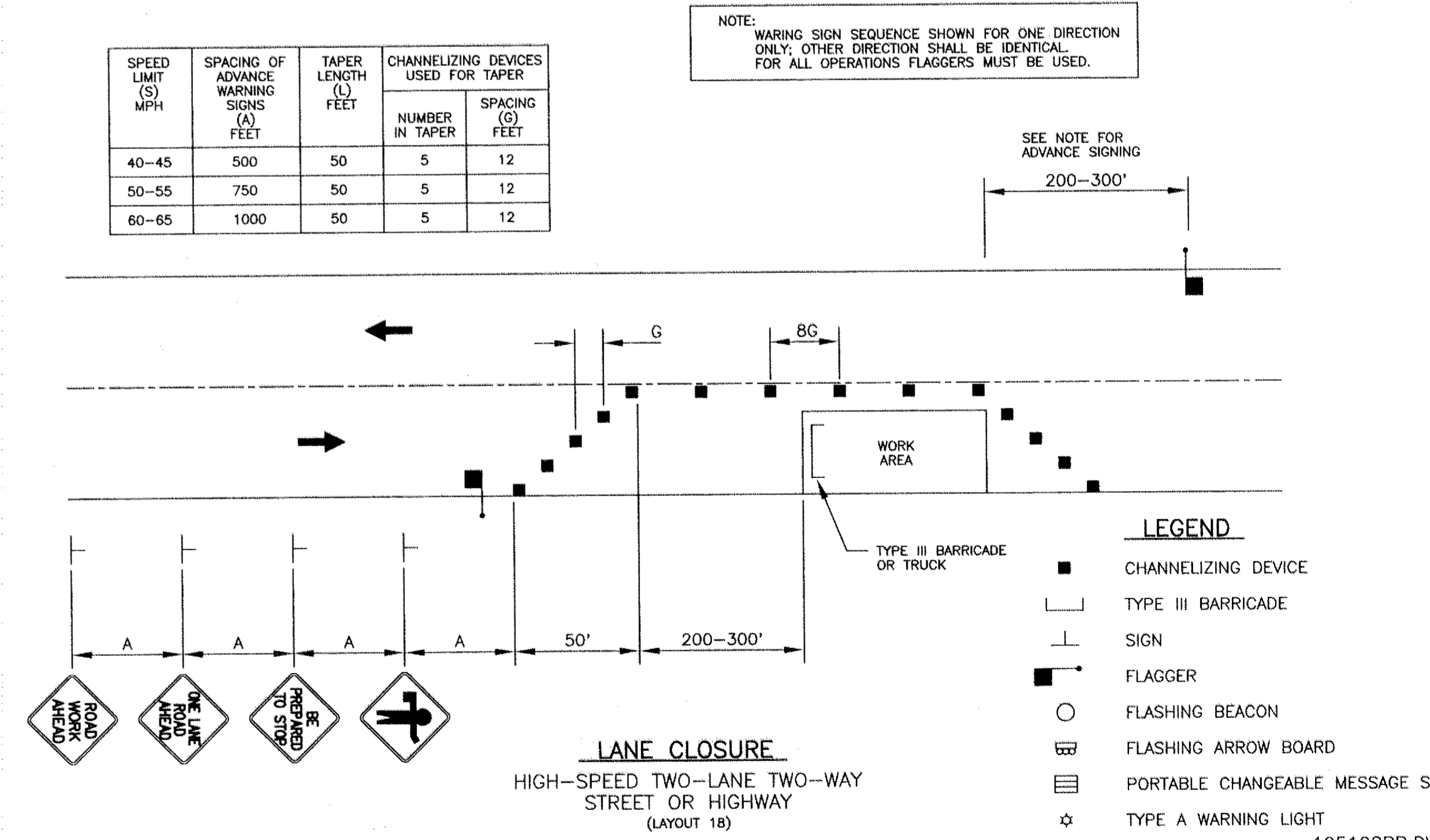
SCHEDULE OF ESTIMATED QUANTITIES

ITEM DESCRIPTION	ESTIMATED QUANTITY
1. 0105.601 COMMON EXCAVATION (ENTRANCE RECONSTRUCTION)	2 EA
2. 2112.501 SUBGRADE PREPARATION	49.3 RD ST
3. 2211.501 AGGREGATE BASE CLASS 5	2,225 T
4. 2221.501 AGGREGATE	700 T
5. 0232.600 FULL DEPTH PAVEMENT RECLAMATION	16,556 SY
6. 0331.601 2" THICK BIT. WEARING COURSE FOR DRIVEWAYS	27 SY
7. 2340.508 TYPE 41 WEARING COURSE MIXTURE	3328 T
8. 2357.502 BITUMINOUS MATERIAL FOR TACK COAT	986 GAL
9. 2501.511 18" RCP PIPE CULVERT CL 3	192 LF
10. 2501.515 18" PIPE APRON	6 EA
11. 0563.601 TRAFFIC CONTROL	1 LS
12. 0564.602 F & I SIGN PANELS	4 EA
13. 0564.603 6" SOLID LINE WHITE PAINT	9900 LF
14. 0564.603 6" DOUBLE SOLID LINE YELLOW - PAINT	4950 LF
15. 0564.603 24" SOLID LINE WHITE - PAINT	38 LF
16. 2573.501 BALE CHECK	100 EA
17. 2573.503 SILT FENCE PRE-ASSEMBLED	100 LF
18. 2575.501 SEEDING	1.1 AC
19. 2575.502 SEED, MIXTURE	55 LB
20. 2575.511 MULCH MATERIAL, TYPE 1	2.2 T
21. 2575.519 DISK ANCHORING	1.1 AC
22. 2575.531 COMMERCIAL FERTILIZER ANALYSIS 10-10-10	550 LB



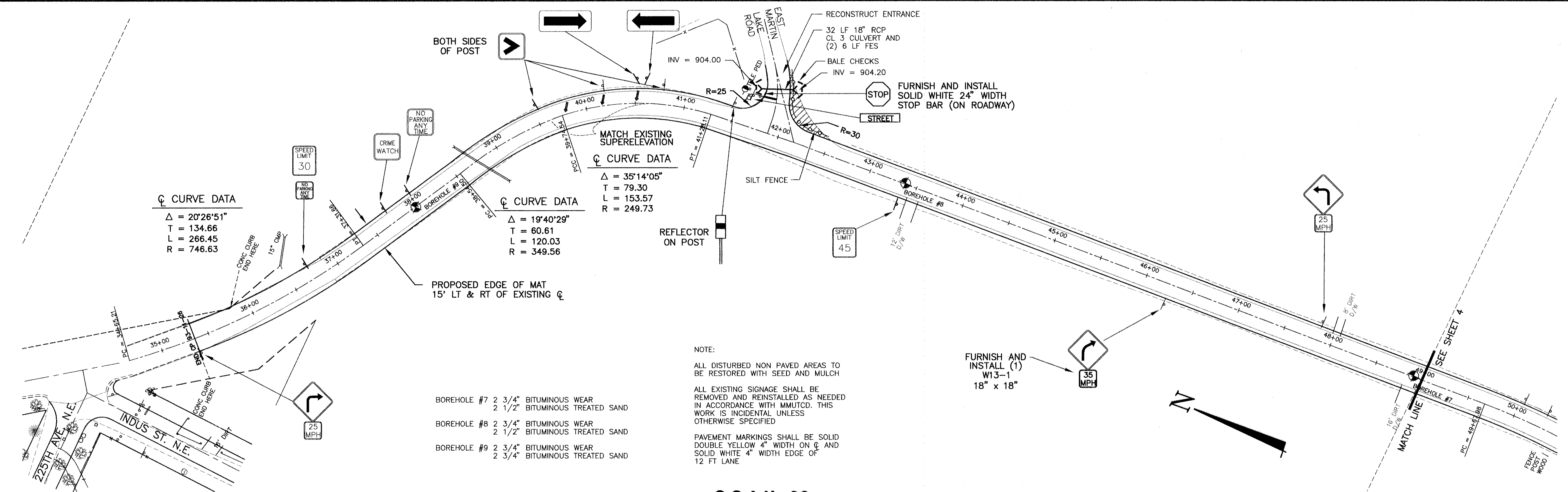
NOTES:
 TRANSVERSE SLOPE SHALL MATCH EXISTING SUPERELEVATION RATE.
 RECLAIMING DEPTH SHALL BE A MINIMUM OF 6 1/2"
 RECLAIMED MATERIAL SHALL CONFORM TO MN DOT 3138 CL 5

TYPICAL LANE CLOSURE



I hereby certify that this plan, specification, or report was prepared by me or under my direct supervision and that I am a duly Registered Professional Engineer under the laws of the State of Minnesota. <i>[Signature]</i> Date: 5/17/96 Reg. No. 11261	DATE	REVISION	DESIGNED BY:	SCALE	Hakanson Anderson Assoc., Inc. Engineers, Surveyors & Landscape Architects 222 Monroe Street, Anoka, Minnesota 55303 612-427-5860 FAX 612-427-3401	CSAH 26 (MARTIN LAKE DRIVE) LINWOOD TWP., MINNESOTA FOR ANOKA COUNTY, MINNESOTA CP-94-45-26	SHEET
	5/15/96	PER COUNTY REVIEW	RDA	HORIZ. 1" = 50'			2
			DMS	VERT. 1" = 5'			OF
			LGK	BOOK			6
			PAGE			DATE 04/04/96 FILE NO. 1251.08 SHEETS	

125108PP.DWG



☉ CURVE DATA
 $\Delta = 20^\circ 28' 51''$
 $T = 134.66$
 $L = 266.45$
 $R = 746.63$

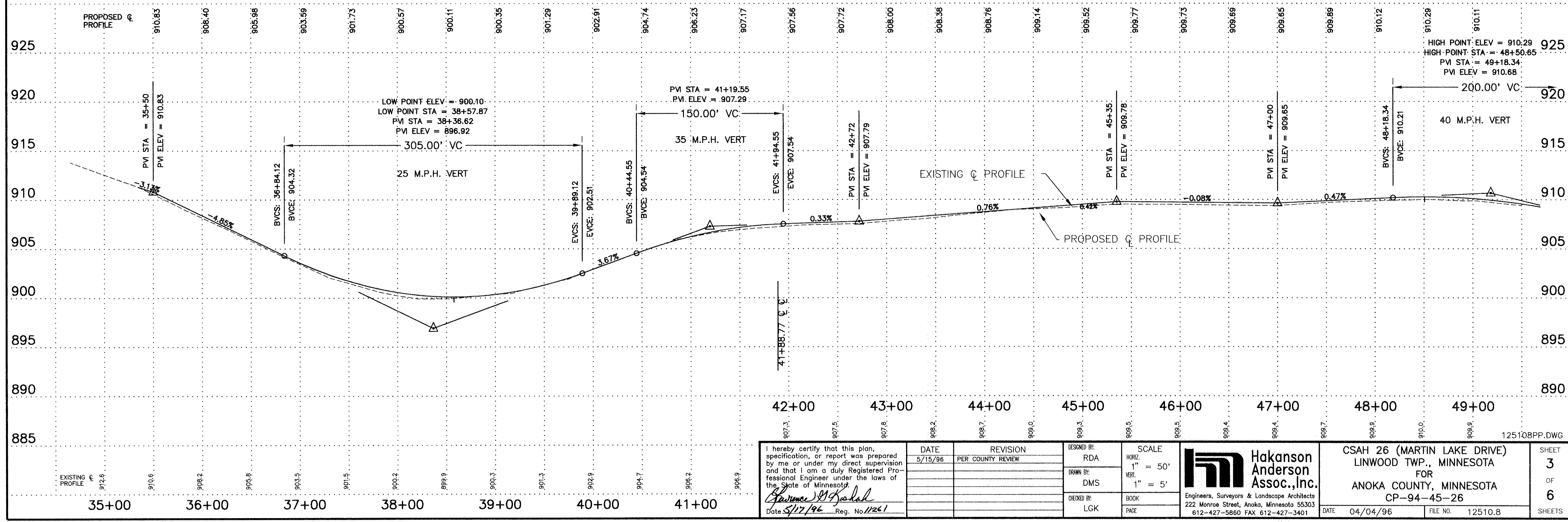
☉ CURVE DATA
 $\Delta = 19^\circ 40' 29''$
 $T = 60.61$
 $L = 120.03$
 $R = 349.56$

☉ CURVE DATA
 $\Delta = 35^\circ 14' 05''$
 $T = 79.30$
 $L = 153.57$
 $R = 249.73$

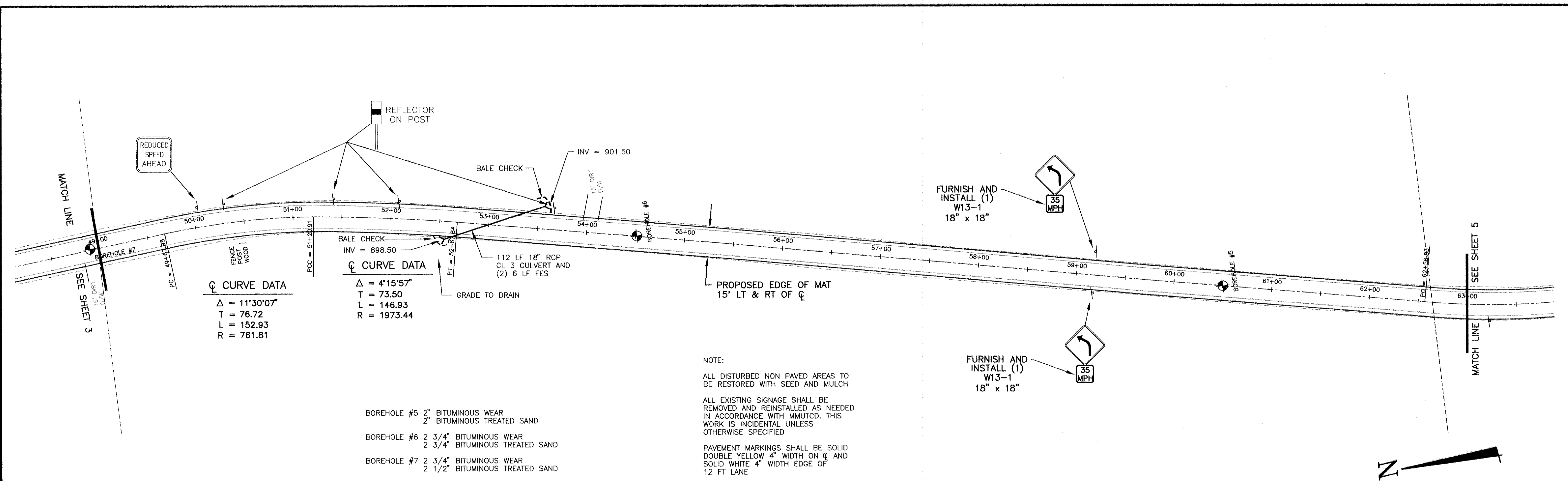
- BOREHOLE #7 2 3/4" BITUMINOUS WEAR
2 1/2" BITUMINOUS TREATED SAND
- BOREHOLE #8 2 3/4" BITUMINOUS WEAR
2 1/2" BITUMINOUS TREATED SAND
- BOREHOLE #9 2 3/4" BITUMINOUS WEAR
2 3/4" BITUMINOUS TREATED SAND

NOTE:
 ALL DISTURBED NON PAVED AREAS TO BE RESTORED WITH SEED AND MULCH
 ALL EXISTING SIGNAGE SHALL BE REMOVED AND REINSTALLED AS NEEDED IN ACCORDANCE WITH MMUTCD. THIS WORK IS INCIDENTAL UNLESS OTHERWISE SPECIFIED
 PAVEMENT MARKINGS SHALL BE SOLID DOUBLE YELLOW 4" WIDTH ON ☉ AND SOLID WHITE 4" WIDTH EDGE OF 12 FT LANE

C.S.A.H. 26

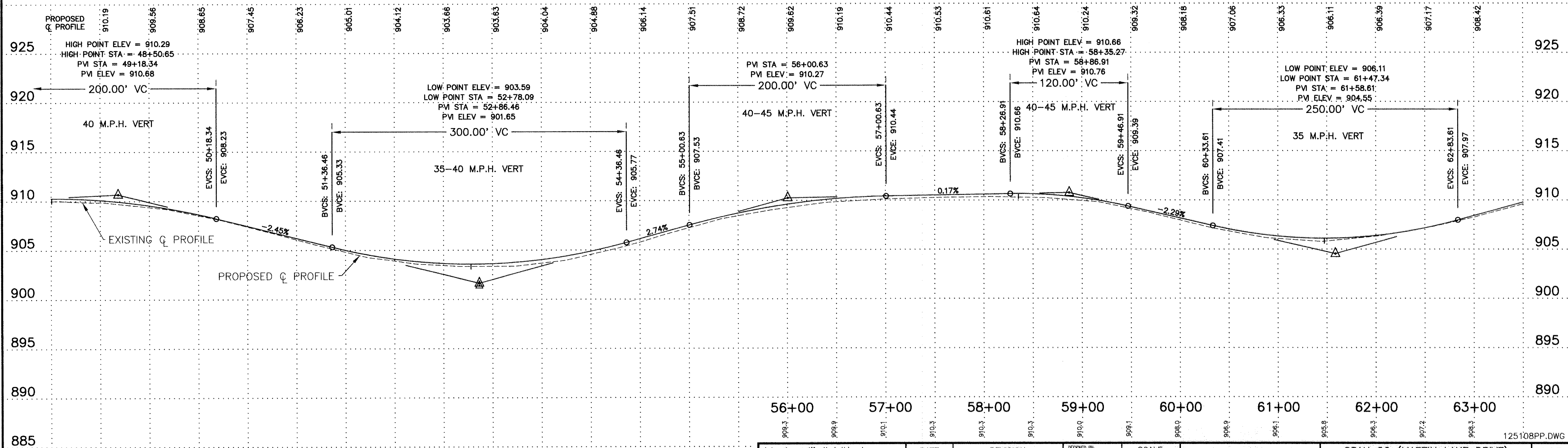


I hereby certify that this plan, specification, or report was prepared by me or under my direct supervision and that I am a duly Registered Professional Engineer under the laws of the State of Minnesota. <i>Garrett J. Padak</i> Date 5/17/96 Reg. No. 11221	DATE	REVISION	DESIGNED BY	SCALE	Hakanson Anderson Assoc., Inc. Engineers, Surveyors & Landscape Architects 222 Monroe Street, Anoka, Minnesota 55303 612-427-5860 FAX 612-427-3401	C.S.A.H. 26 (MARTIN LAKE DRIVE) LINWOOD TWP., MINNESOTA FOR ANOKA COUNTY, MINNESOTA CP-94-45-26	SHEET 3 OF 6 SHEETS
	5/15/96	PER COUNTY REVIEW	RDA	HORIZ. 1" = 50'			
			DMS	VERT. 1" = 5'			
			LCK	BOOK PAGE			
					DATE 04/04/96	FILE NO. 12510.8	



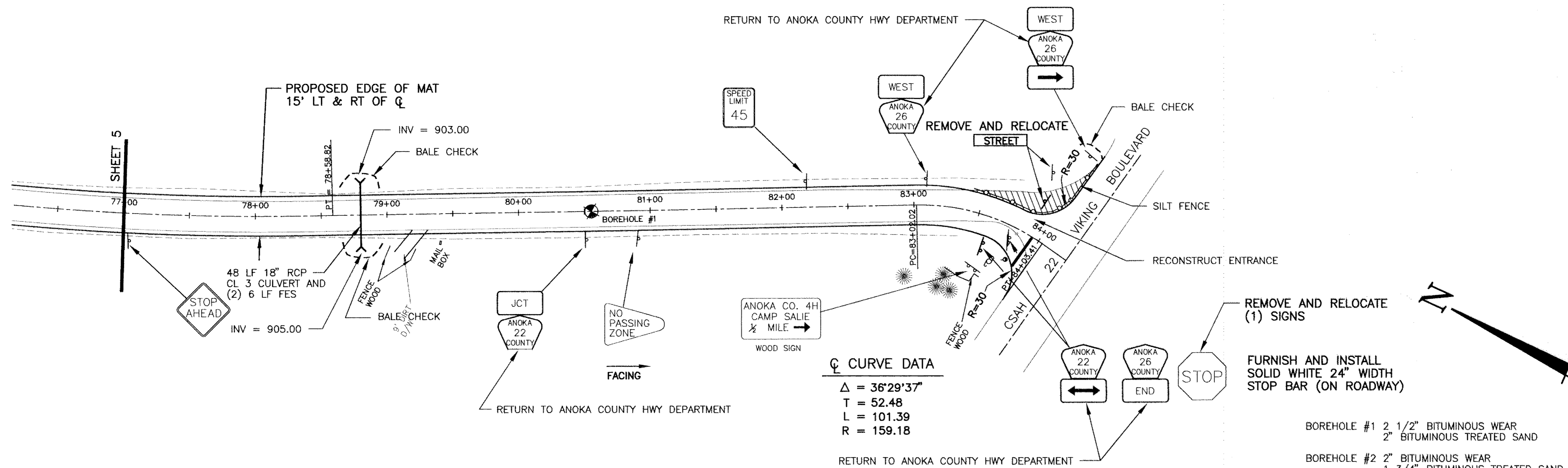
NOTE:
 ALL DISTURBED NON PAVED AREAS TO BE RESTORED WITH SEED AND MULCH
 ALL EXISTING SIGNAGE SHALL BE REMOVED AND REINSTALLED AS NEEDED IN ACCORDANCE WITH MMUTCD. THIS WORK IS INCIDENTAL UNLESS OTHERWISE SPECIFIED
 PAVEMENT MARKINGS SHALL BE SOLID DOUBLE YELLOW 4" WIDTH ON ϕ AND SOLID WHITE 4" WIDTH EDGE OF 12 FT LANE

C.S.A.H. 26



I hereby certify that this plan, specification, or report was prepared by me or under my direct supervision and that I am a duly Registered Professional Engineer under the laws of the State of Minnesota. <i>Cherene M. Kahal</i> Date: 5/17/96 Reg. No. 11221	DATE	REVISION	DESIGNED BY:	SCALE HORIZ. 1" = 50' VERT. 1" = 5'	Hakanson Anderson Assoc., Inc. Engineers, Surveyors & Landscape Architects 222 Monroe Street, Anoka, Minnesota 55303 612-427-5860 FAX 612-427-3401	CSAH 26 (MARTIN LAKE DRIVE) LINWOOD TWP., MINNESOTA FOR ANOKA COUNTY, MINNESOTA CP-94-45-26	SHEET
	5/15/96	PER COUNTY REVIEW	RDA				4
			DMS	OF			
			LGK	6			
			CHECKED BY:	BOOK	DATE	FILE NO.	SHEETS
				PAGE	04/04/96	1251.08	5

125108PP.DWG



☉ CURVE DATA

Δ = 36°29'37"
 T = 52.48
 L = 101.39
 R = 159.18

REMOVE AND RELOCATE (1) SIGNS

FURNISH AND INSTALL SOLID WHITE 24" WIDTH STOP BAR (ON ROADWAY)

BOREHOLE #1 2 1/2" BITUMINOUS WEAR
 2" BITUMINOUS TREATED SAND

BOREHOLE #2 2" BITUMINOUS WEAR
 1 3/4" BITUMINOUS TREATED SAND

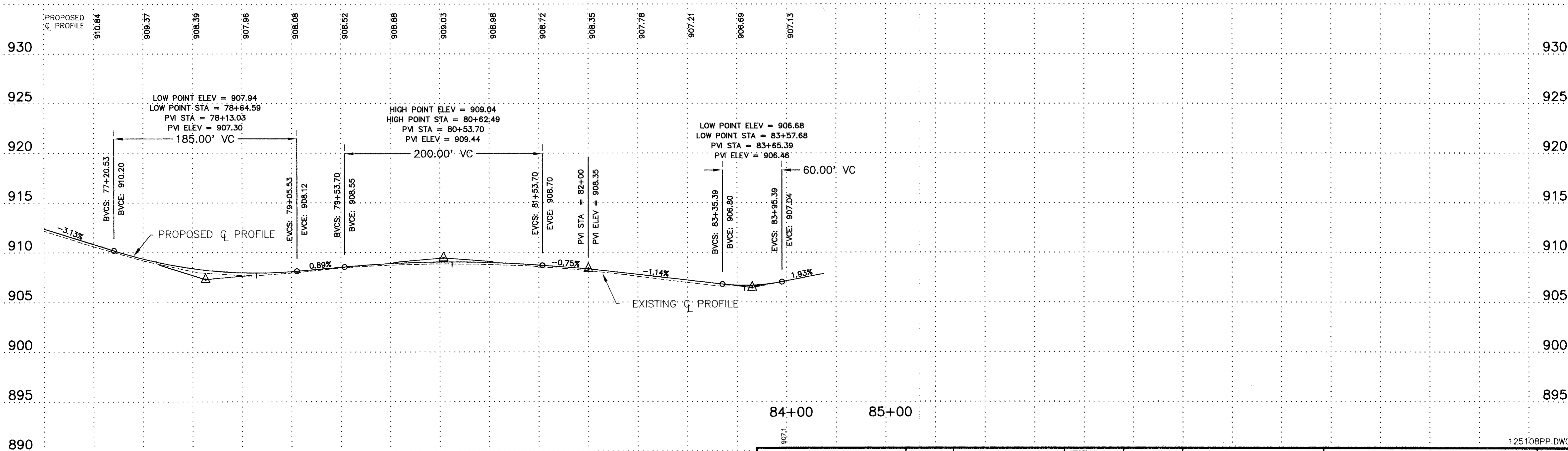
NOTE:

ALL DISTURBED NON PAVED AREAS TO BE RESTORED WITH SEED AND MULCH

ALL EXISTING SIGNAGE SHALL BE REMOVED AND REINSTALLED AS NEEDED IN ACCORDANCE WITH MMUTCD. THIS WORK IS INCIDENTAL UNLESS OTHERWISE SPECIFIED

PAVEMENT MARKINGS SHALL BE SOLID DOUBLE YELLOW 4" WIDTH ON ☉ AND SOLID WHITE 4" WIDTH EDGE OF 12 FT LANE

C.S.A.H. 26



I hereby certify that this plan, specification, or report was prepared by me or under my direct supervision and that I am a duly Registered Professional Engineer under the laws of the State of Minnesota. <i>Lawrence D. Kahal</i> Date: 5/17/96 Reg. No. 11261	DATE	5/15/96	DESIGNED BY:	RDA	SCALE	HORIZ. 1" = 50' VERT. 1" = 5'	Engineers, Surveyors & Landscape Architects 222 Monroe Street, Anoka, Minnesota 55303 612-427-5860 FAX 612-427-3401	CSAH 26 (MARTIN LAKE DRIVE) LINWOOD TWP., MINNESOTA FOR ANOKA COUNTY, MINNESOTA CP-94-45-26	SHEET	6		
	REVISION	PER COUNTY REVIEW	DRAWN BY:	DMS					OF	6		
	CHECKED BY:	LGK	BOOK		DATE	04/04/96			FILE NO.	1251.08	SHEETS	
			PAGE									

125108PP.DWG