

CONVENTIONAL SIGNS

STATE LINE	TIMBER
COUNTY LINE	BRUSH
TOWNSHIP OR RANGE LINE	ORCHARD
SECTION LINE	ROCK LEDGE
QUARTER LINE	SAND
SIXTEENTH LINE	EDGE OF CUT
EIGHTH OF WAY LINE	TOE OF EMBANKMENT
PRESENT ROAD PA. LINE	CATCH BASIN
LIMITED ACCESS	MANHOLE
PROPERTY LINE (ELEV. LOW)	WOOD PILE
DECATED PLANTED PROPERTY	FIRE HYDRANT
CORPORATE OR CITY LIMITS	ASC. LAMP
TRUNK HIGHWAY CENTER LINE	OTHER LAMP (SHOW TYPE)
RETAINING WALL	RAILROAD CROSSING SIGN
STEAM RAILROAD	ELECTRIC WARNING SIGN
ELECTRIC RAILROAD	CROSSING DATE
RAILROAD RIGHT-OF-WAY LINE	CATTLE GUARD
CREEK	OVERHEAD POWER LINE
RAFFER OR WATERFALL	UNDERPASS (SHOW TYPE)
DRY RUN	ABUTMENT, WALL & PIER
DRAINAGE DITCH	BRIDGE
HIGH TENSION LINE	CONVERT
POWER POLE LINE	BUILDING (SHOW SHY FRAME)
TELEPHONE OR TELEGRAPH LINE	CONCRETE & STONE T. PILE & BRICK BY STUCCO
TELEPHONE CONDUIT	IRON PIPE
GUARD RAIL	STONE MONUMENT
WIRE FENCE	WOOD STAKE OR CUB
RAILROAD SNOW FENCE	MEANDER CORNER
BOARD OR HIGHWAY SNOW FENCE	
STONE WALL OR FENCE	
GAS MAIN	
WATER PIPE	
SEWER PIPE	
GRAVEL PIT	
SAND PIT	
CLAY PIT	
ROCK QUARRY	
SPRINKLER	
MARSH	

NOTE: SECTION NUMBERS READ FROM THE SOUTH



**STATE OF MINNESOTA
DEPARTMENT OF HIGHWAYS**

CONSTRUCTION PLAN FOR GRADING & BITUMINOUS SURFACE.

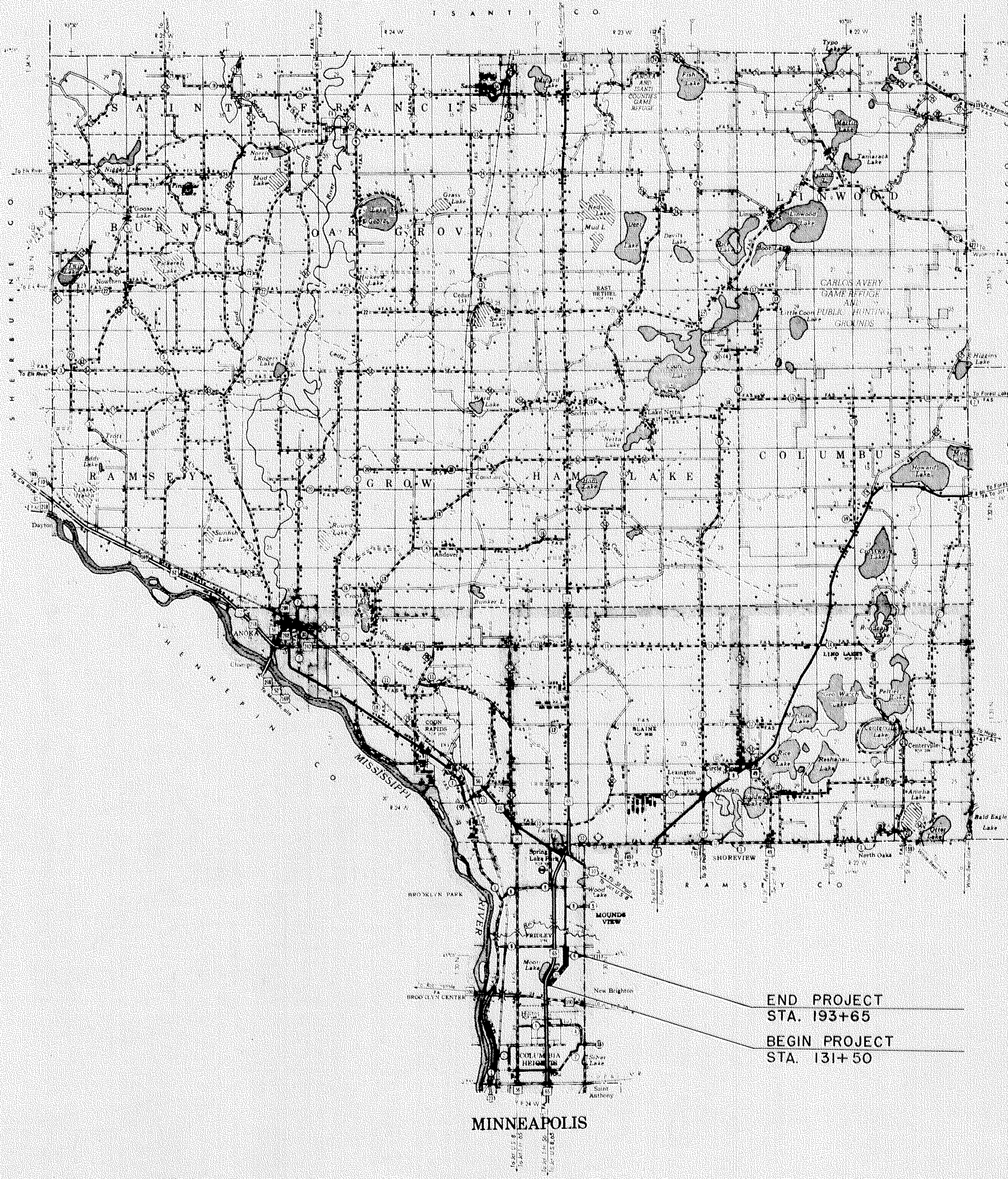
County State Aid Highway No. 35

BETWEEN JCT. T.H. #65 AND JCT. C.S.A.H. #6

From J301 E. OF W1/4 COR. SEC. 24 T.30. R-24 To CENTER SEC. 13 T-30. R-24

GROSS LENGTH	6215	FEET 1.18	MILES
BRIDGES LENGTH	0.0	FEET 0.0	MILES
EXCEPTIONS LENGTH	0.0	FEET 0.0	MILES
NET LENGTH	6215	FEET 1.18	MILES

PROFILES: Horiz. 1 inch = 100 Feet; Vert. 1 inch = 10 Feet
 WORKING PLANS: Horiz. 1 inch = 100 Feet; Vert. 1 inch = 10 Feet
 CROSS SECTION: 1 inch = 10 FEET
 LAYOUT: Scale 1 inch = Foot



INDEX OF SHEETS

Sheet No. 1	Title Sheet & Layout Map
No. 2	Est. Quantities & Typical Sec.
No. 3 To 4	Plan & Profile
No. 4 To 11	Cross Sections

DESIGN SPEED 50 M.P.H.
 LOCALLY RESTRICTED

ALL APPLICABLE FEDERAL, STATE AND LOCAL LAWS AND ORDINANCES WILL BE COMPLIED WITH, IN THE CONSTRUCTION OF THIS PROJECT.

I HEREBY CERTIFY THAT THIS PLAN WAS PREPARED BY ME OR UNDER MY DIRECT SUPERVISION AND THAT I AM A DULY REGISTERED PROFESSIONAL ENGINEER UNDER THE LAWS OF THE STATE OF MINNESOTA.

Erling J. Sundheim COUNTY ENGINEER DATE 4-17-62
 ANOKA COUNTY REG. NO. 2551
 RECOMMENDED FOR APPROVAL *Raylon R. Beck* 6-15-62 DISTRICT ENGINEER
 RECOMMENDED FOR APPROVAL *John McMillon* 6/19/62
 APPROVED 6-19-1962 *W.M. Swanson* STATE AID ENGINEER

END PROJECT
 STA. 193+65
 BEGIN PROJECT
 STA. 131+50

MINNEAPOLIS

MICRO-FILMED

S.A.P. 02-635-01

SPECIFICATIONS
 THE "SPECIFICATIONS FOR HIGHWAY CONSTRUCTION" DATED MAY 1, 1959, AND SUBMITTED FOR APPROVAL BY THE DIVISION ENGINEER OF THE BUREAU OF PUBLIC ROADS ON MARCH 26, 1959, SHALL GOVERN.

ESTIMATED QUANTITIES

SPECIFICATION NO.	ITEM	UNIT	MUNICIPAL	RURAL	TOTAL ESTIMATED QUANTITIES
2101.501	CLEARING	ACRE			0.61
2101.502	CLEARING	TREE			17
2101.506	GRUBBING	ACRE			0.56
2101.507	GRUBBING	TREE			11
2104.501	REMOVE PORTABLE CULV.	LIN. FT.			518
2104.519	REMOVE INTEGRANT CURB	LIN. FT.			1660
2104.507	REMOVE CONC. STRUCTURE	CU. YD.			15
2104.511	REMOVE CATCH BASINS	STRUCT.			1
2105.501	CLASS 'A' EXCAVATION	CU. YD.			12,350
110.621	EMBANKMENT INP	CU. YD.			11,146
(Cross Section Measure in Pit)					
2130.501	WATER	M-GAL.			325
2201.526	GRAVEL SUB-BASE INP (CL.-4)	TON			15,550
2202.526	GRAVEL BASE INP (CL.-5)	TON			5,990
2341.501	BIT. MAT. FOR PRIME	GAL.			8,940
2341.502	BIT. MAT. FOR TACK COAT	GAL.			1,490
2341.504	BIT. MAT. FOR MIX	TON			338
2341.511	BIT. MIXTURE (LEVELING)	TON			2,050
2341.511	BIT. MIXTURE (WEARING)	TON			2,460
2341.511	BIT. MIXTURE (BINDER)	TON			2,460
2501.501	PIPE CULV. EXC.	CU. YD.			427
2501.511-15	F&I C.M.P. CULV. (15")	LIN. FT.			388
2501.521-24	F&I S.C.P. CULV. (24") CL. II	LIN. FT.			204
2501.521-24	F&I S.C.P. CULV. (24") CL. III	LIN. FT.			114
2515.541	F&I CONC. APRONS FOR S.C.P. (24")	APRON			6
2501.522	F&I S.C.P.-A CULV. (SPAN 73 1/2) CL. III	LIN. FT.			62
2515.542	F&I CONC. APRONS FOR S.C.P.-A (73 1/2" SP)	APRON			2
2501.549	SAND-GRAVEL SUB FOUNDATION	CU. YD.			128
2506.507	CONSTRUCT CATCH BASINS (DESIGN CORG)	LIN. FT.			29.5
2506.516	F&I CASTING ASSEMBLIES	ASSEMBLY			8
2506.522	ADJ. FRAME & RING CASTINGS	ASSEMBLY			5
2501.531	INSTALL C.M. CULV.	LIN. FT.			60
2531.501	CONCRETE CURB & GUTTER	LIN. FT.			11,960
2574.501	ROADSIDE SEEDING	ACRE			38
2576.501	SODDING	SQ. YD.			8,528
2501.521-12	F&I SCP CULV. (12") CL. III	LIN. FT.			42
2503.512-18	F&I RCP SEWER (18") CL. II	LIN. FT.			114
2104.502	REMOVE PAVEMENT	SQ. YD.			62

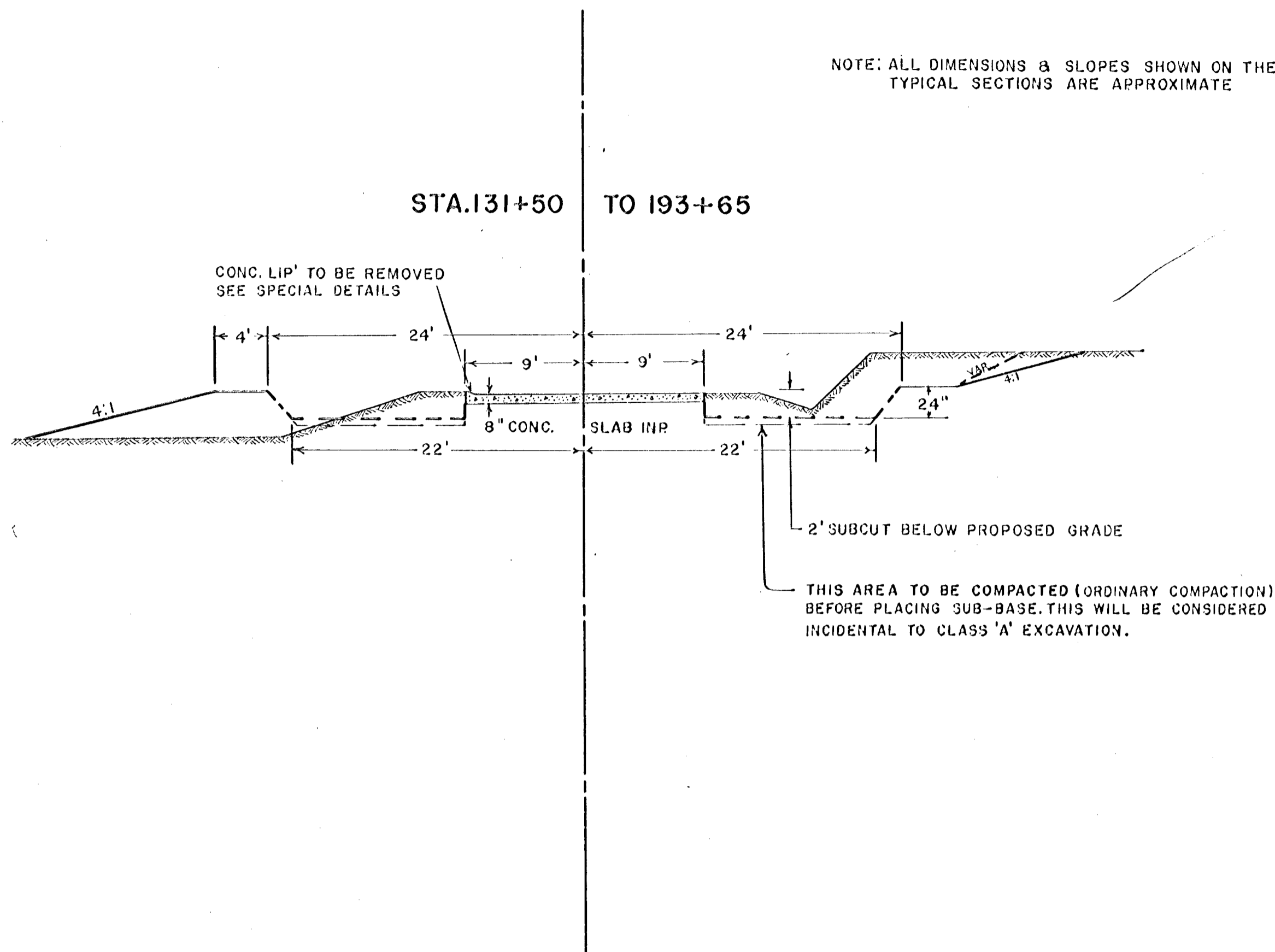
- ① FOR REMOVAL OF CONC. BOX CULVERTS
- ② COUNTY SHALL FURNISH SEED
- ③ FOR REMOVAL OF CONC. PAVEMENT TO INSTALL ϵ CROSS CULV.

STANDARD DETAIL PLATES

THE FOLLOWING STANDARD DETAIL PLATES, APPROVED BY THE BUREAU OF PUBLIC ROADS, SHALL APPLY ON THIS PROJECT.

PLATE NO.	DESCRIPTION
7035 D	CURB RETURNS AT ENTRANCES.
3000 B	REINFORCED CONCRETE PIPE
3014	REINFORCED CONCRETE PIPE - ARCH
3100 B	CONCRETE APRON FOR REINFORCED CONCRETE PIPE
3110	CONCRETE APRON FOR REINFORCED CONCRETE PIPE ARCH
4002 C	MANHOLE OR CATCH BASIN
4006 D	MANHOLE OR CATCH BASIN
4126 B	CATCH BASIN FRAME CASTING
4149 B	GRATE CASTING FOR CATCH BASIN
4162 A	CURB BOX CASTING FOR CATCH BASIN
7102 B	CONCRETE CURB & GUTTER DESIGN S512
7110 D	CURB & GUTTER CONSTRUCTION AT CATCH BASIN
7111 B	INSTALLATION OF CATCH BASIN CASTINGS
8000A,8001	
8003&8008A	SIGNS & BARRICADES

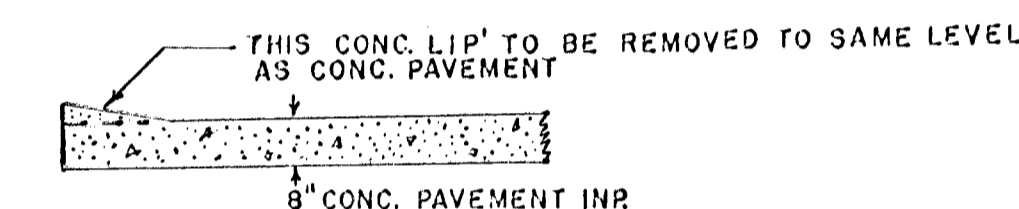
TYPICAL GRADING SECTIONS



SPECIAL DETAILS

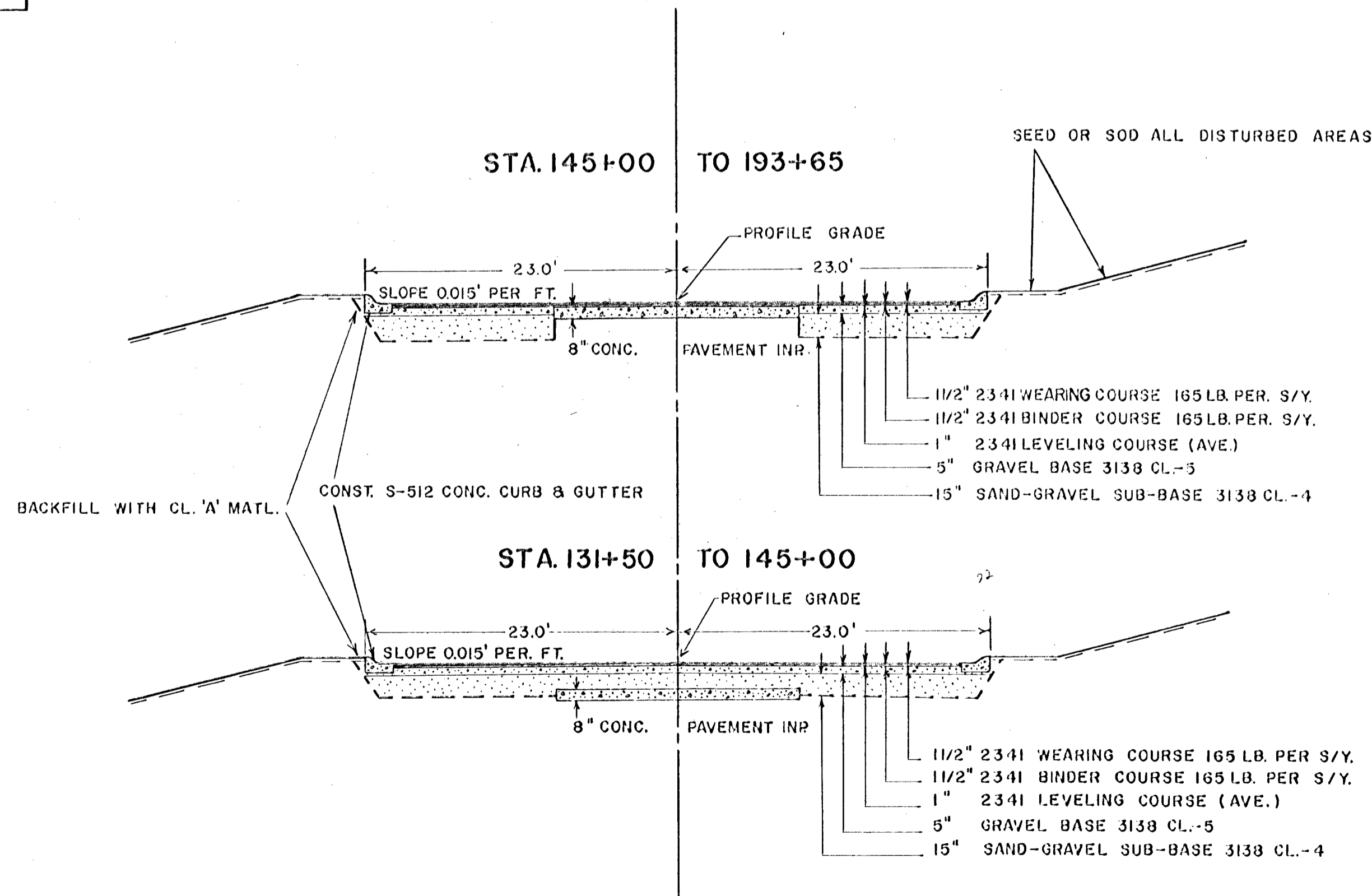
PROJECT LACKING OF CLASS "A" EXCAVATION, CONSEQUENTLY THERE ARE NO BALANCE POINTS, APPROXIMATELY 12,350 CU. YDS. AVAILABLE ON PROJECT AS CLASS "A" MATERIAL. THE REMAINDER APPROXIMATELY 11,146 CU. YDS. TO COMPLETE THE JOB WILL BE FURNISHED BY THE CONTRACTOR FROM SOURCES SELECTED BY HIM. SEE SPECIAL PROVISIONS, ITEM EMBANKMENT IN PLACE.

ITEM NO. 2104.519 REMOVE INTEGRANT CURB



LT. STA. 168+55 TO 170+50
 LT. STA. 173+00 TO 180+40
 RT. STA. 173+00 TO 180+25

TYPICAL BASE & SURFACE SECTIONS



BASE OF PLANNED QUANTITIES

SAND GRAVEL SUBBASE: 135 LBS. PER CU. FT. COMPACTED
 GRAVEL BASE: 140 LBS. PER CU. FT. COMPACTED
 WATER: 15 GAL. PER TON.
 BIT. MATL. FOR PRIME: 0.3 GAL. PER SQ. YD.
 BIT. MATL. FOR TACK COAT: 0.05 GAL. PER SQ. YD.
 BIT. MATL. FOR MIX: 4.5% OF MIXTURE BY WT. FOR BINDER & LEVELING
 5.5% OF MIXTURE BY WT. FOR WEARING.

S.A.P. 02-635-01

BM#1 ELEV. 100.0
PAINTED SPOT ON N. END
DIVIDING CURB @ SH. TH. 65

131+59 CULV.
INR 15" X 68" C.M.P.
TO REMAIN INR

136+50 CULV.
FBI 24" X 60" S.C.P. CL. III
35 CU. YD. PIPE CULV. EXC.
14 CU. YD. SAND GRAVEL SUB-FOUND
FBI 1 APRON

BM#2 ELEV. 95.22
SPIKE IN 24" WILLOW
100' RT. STA. 146+70

147+42 LT.
INR 15" X 30" C.M.P.
REMOVE 30"
FBI 15" X 30" C.M.P.

149+32 RT.
INR 60" GRATED OPEN CULV.
TO REMAIN INR

153+18 CULV.
INR 24" X 60" C.M.P. & S.C.P.
REMOVE
FBI 24" X 80" S.C.P. CULV. CL. II
FBI 2 APRONS
63 CU. YD. PIPE CULV. EXC.
18 CU. YD. SAND GRAVEL SUB-FOUND

PI = 132+89.8
Δ = 27° 15' LT.
D = 16°
T = 88.8'
L = 170.2

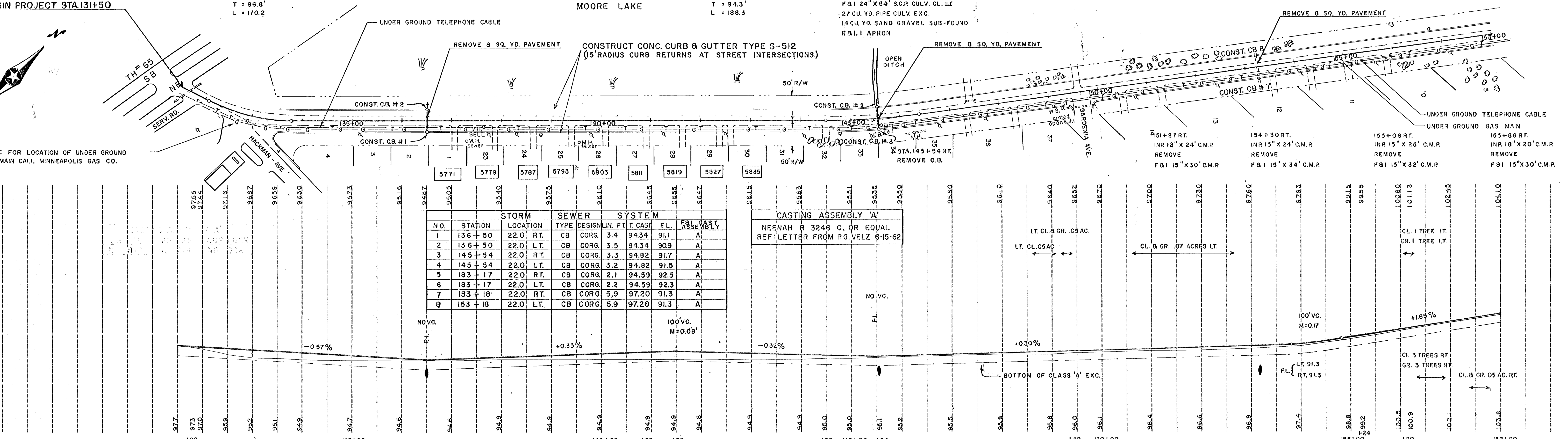
PI = 145+44.1
Δ = 7° 33' LT.
D = 4°
T = 94.3'
L = 188.3

145+54 CULV.
2' X 2' X 42' CONC. BOX CULV. INR
REMOVE 8 CU. YD. CONC.
FBI 24" X 54" S.C.P. CULV. CL. III
27 CU. YD. PIPE CULV. EXC.
14 CU. YD. SAND GRAVEL SUB-FOUND
FBI 1 APRON

PROJECT STA. 131+50

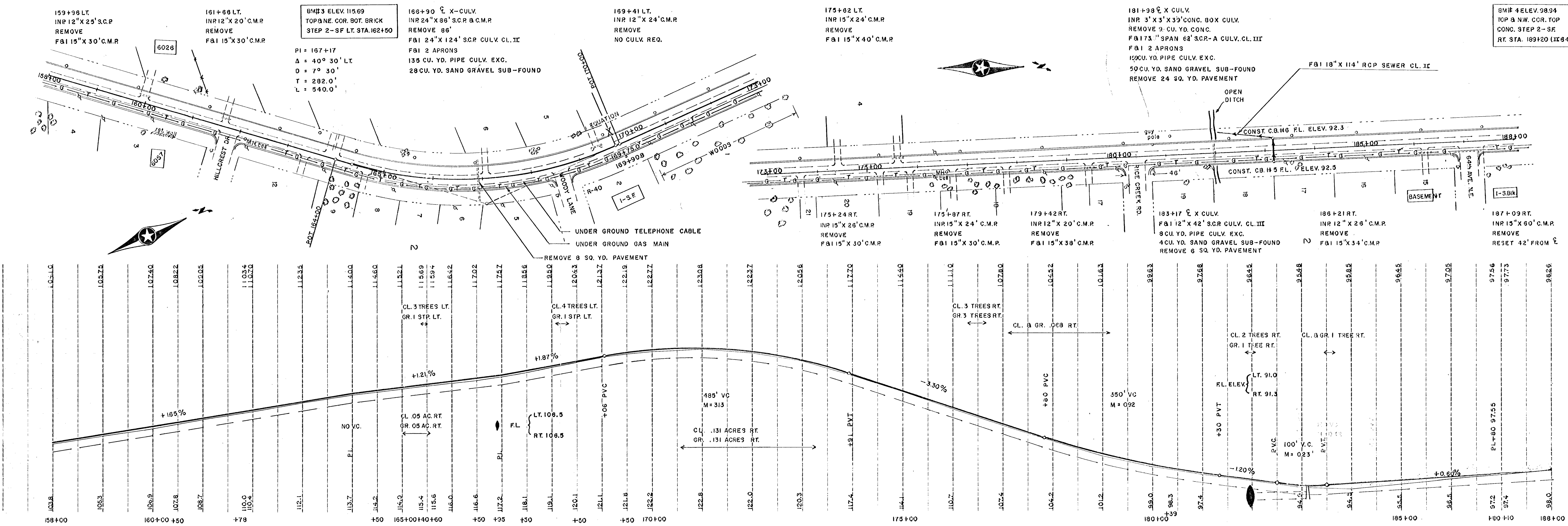
MOORE LAKE

FOR LOCATION OF UNDER GROUND
MAIN CALL MINNEAPOLIS GAS CO.



STORM		SEWER		SYSTEM		CASTING ASSEMBLY 'A'	
NO.	STATION	LOCATION	TYPE	DESIGN	LN. FT.	T. CAST	FL.
1	136+50	22.0 RT.	CB	CORG.	3.4	94.34	91.1
2	136+50	22.0 LT.	CB	CORG.	3.5	94.34	90.9
3	145+54	22.0 RT.	CB	CORG.	3.3	94.82	91.7
4	145+54	22.0 LT.	CB	CORG.	3.2	94.82	91.5
5	183+17	22.0 RT.	CB	CORG.	2.1	94.59	92.5
6	183+17	22.0 LT.	CB	CORG.	2.2	94.59	92.3
7	183+18	22.0 RT.	CB	CORG.	5.9	97.20	91.3
8	183+18	22.0 LT.	CB	CORG.	5.9	97.20	91.3

CASTING ASSEMBLY 'A'
NEENAH R 3246 C. OR EQUAL
REF. LETTER FROM P.G. VELZ 6-15-62



BM#3 ELEV. 115.69
TOP ANGLE COR. BOT. BRICK
STEP 2-SF LT. STA. 162+50

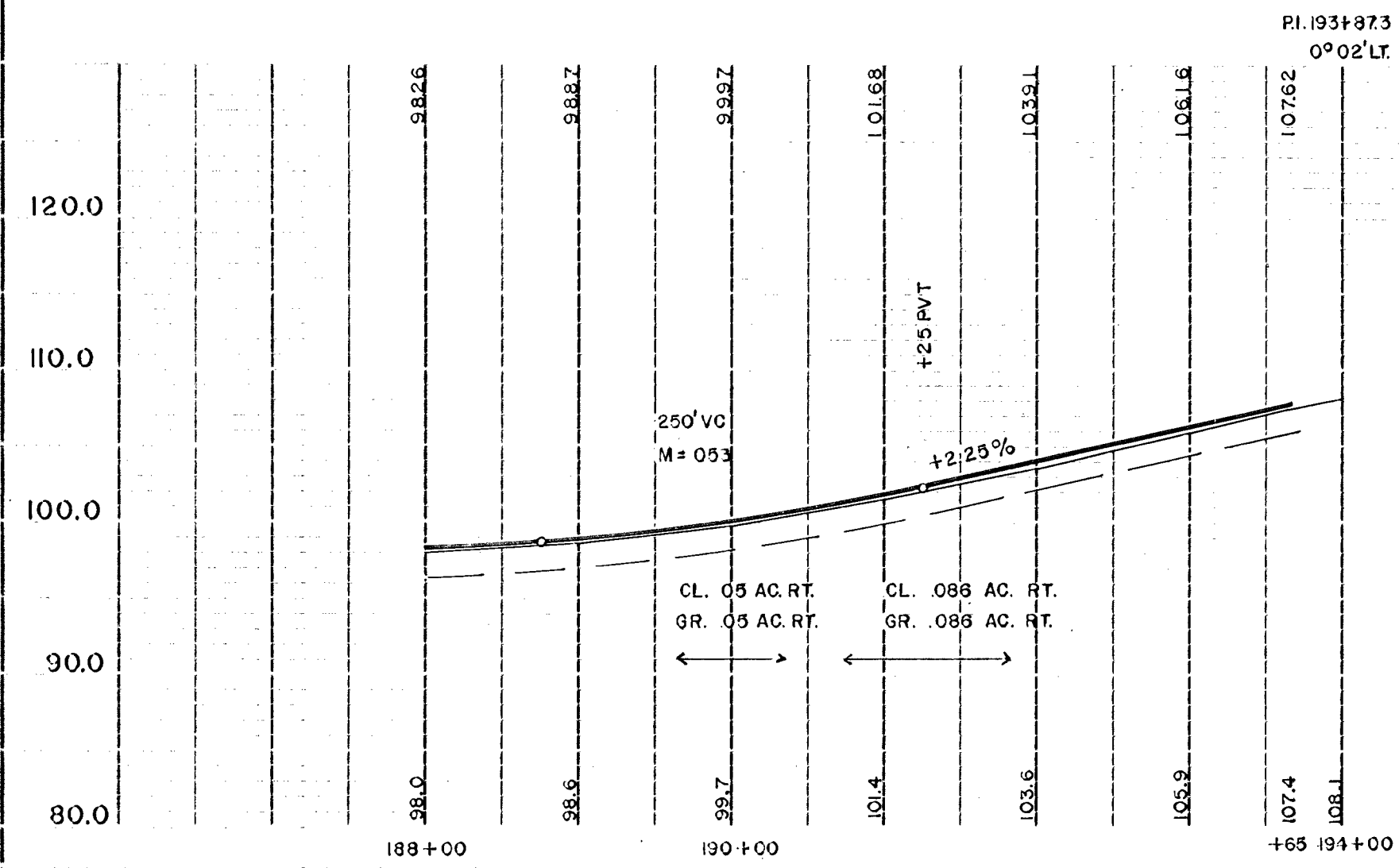
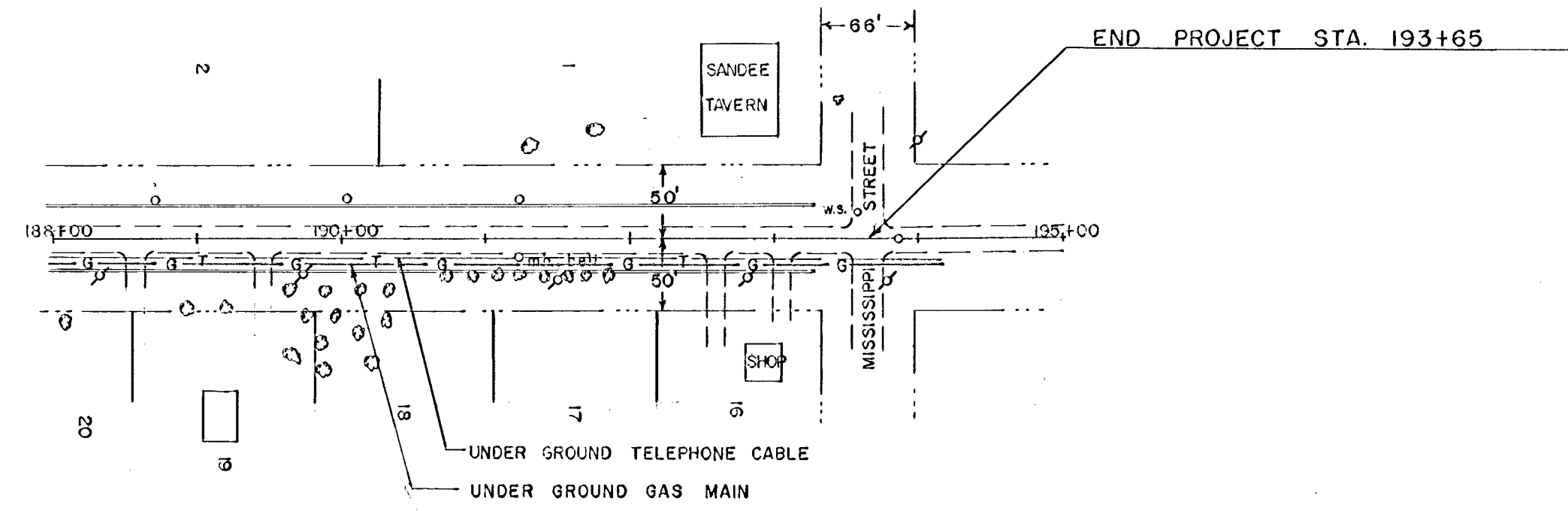
166+90 CULV.
INR 24" X 86" S.C.P. C.M.P.
REMOVE 86"
FBI 24" X 124" S.C.P. CULV. CL. II
FBI 2 APRONS
135 CU. YD. PIPE CULV. EXC.
28 CU. YD. SAND GRAVEL SUB-FOUND

169+41 LT.
INR 12" X 24" C.M.P.
REMOVE
NO CULV. REQ.

175+82 LT.
INR 15" X 24" C.M.P.
REMOVE
FBI 15" X 40" C.M.P.

181+38 CULV.
INR 3' X 3' X 39" CONC. BOX CULV.
REMOVE 3 CU. YD. CONC.
FBI 173" SPAN 62" S.C.P.-A CULV. CL. III
FBI 2 APRONS
150 CU. YD. PIPE CULV. EXC.
50 CU. YD. SAND GRAVEL SUB-FOUND
REMOVE 24 SQ. YD. PAVEMENT

BM#4 ELEV. 98.94
TOP & NW. COR. TOP
CONC. STEP 2-SF
RT. STA. 189+20 (II 8421)



MISSISSIPPI
 SANDEE TAVERN
 UNDER GROUND TELEPHONE CABLE
 UNDER GROUND GAS MAIN
 END PROJECT STA. 193+65

MISSISSIPPI
 SANDEE TAVERN
 UNDER GROUND TELEPHONE CABLE
 UNDER GROUND GAS MAIN
 END PROJECT STA. 193+65