

STATE OF MINNESOTA
DEPARTMENT OF HIGHWAYS

CONSTRUCTION PLAN FOR GRADING

County State Aid Highway No. **57**

Between CR 57 (SUNFISH LAKE BLVD) And CR 56 (RAMSEY BLVD)

A PT. 1528' E. OF THE SE. COR. OF SEC. 27, From T. 32 N., R. 25 W. To A PT. 1325.21' S. OF THE N.W. COR. OF SEC. 27, T. 32 N., R. 25 W.

Give proper reference to Sections, Township and Range

| | | | | |
|-------------------|-----------|------|-------|-------|
| GROSS LENGTH | 7,192.750 | FEET | 1,362 | MILES |
| BRIDGES LENGTH | 0 | FEET | 0 | MILES |
| EXCEPTIONS LENGTH | 0 | FEET | 0 | MILES |
| NET LENGTH | 7,192.750 | FEET | 1,362 | MILES |

INDEX OF SHEETS

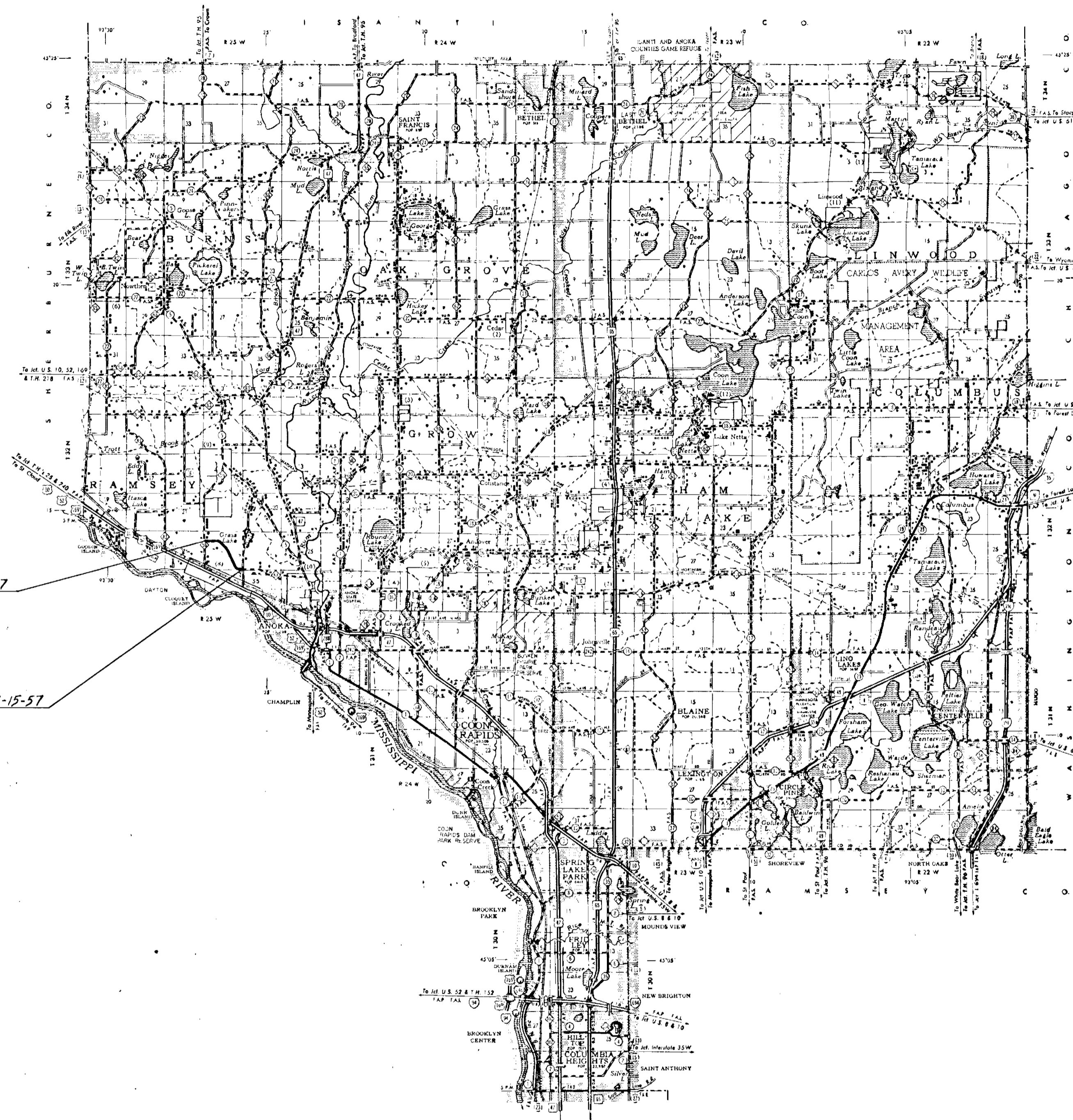
- Sheet No. 1. Title Sheet & Layout Map
- No. 2. Est. Quantities & Typical Sec.
- No. 3. To Plan & Profile
- No. To Cross Sections

SCALE

- INDEX MAP 2 MI.
- PLAN 100'
- PROFILE 100' HORIZ. 10' VERT.
- CROSS SECTION 10'

CONVENTIONAL SIGNS

- STATE LINE
- COUNTY LINE
- TOWNSHIP OR RANGE LINE
- SECTION LINE
- QUARTER LINE
- SIXTEENTH LINE
- RIGHT OF WAY LINE
- PRESENT RIGHT OF WAY LINE
- CONTROL OF ACCESS LINE
- PROPERTY LINE (EQUIP LINE LINE)
- VACATED PLATTER PROPERTY
- CORPORATE OR CITY LIMITS
- TRUNK HIGHWAY CENTER LINE
- TELEPHONE OR TELEGRAPH LINE
- RETAINING WALL
- RAILROAD
- RAILROAD RIGHT OF WAY LINE
- RIVER OR CREEK
- DRY RUN
- DRAINAGE DITCH
- ELECTRIC POWER LINE
- TELEPHONE OR TELEGRAPH LINE
- JOINT TELEPHONE AND POWER
- CONDUIT
- TELEPHONE CABLE AERIAL
- TELEPHONE CABLE UNDERGROUND
- POWER CABLE UNDERGROUND
- GAS MAIN
- CONCRETE
- GRAP INLET
- GUARD RAIL
- BARRIED WIRE FENCE
- WOVEN WIRE FENCE
- CHAIN LINK FENCE
- RAILROAD SNOW FENCE
- STONE WALL OR FENCE
- HEDGE
- WATER PIPE
- SEWER PIPE
- DRAIN TILE
- SPRING
- MARSH
- TIMBER
- ORCHARD
- BRUSH
- NURSERY
- CATCH BASIN
- MANHOLE
- FIRE HYDRANT
- STREET LIGHT
- RAILROAD CROSSING SIGN
- RAILROAD CROSSING BELL
- ELECTRIC WARNING SIGN
- CROSSING GATE
- CATTLE GUARD
- OVERPASS (Highway Over)
- UNDERPASS (Highway Under)
- BRIDGE
- BUILDING (One Story Frame)
- F. FRAME C. CONCRETE
- S. STONE S. TILE
- B. BRICK ST. STUCCO
- IRON PIPE OR ROB
- MONUMENT (STONE, CONCRETE, OR METAL)
- WOODEN PILE
- GRAVEL PIT
- SAND PIT
- BURDEN PIT
- ROCK QUARRY
- MEANDER CORNER



END PROJ. CP 77-15-57
P.O.T. STA. 71+75.35

BEGIN PROJ. CP 77-15-57
P.O.T. STA. 0+00.00

DESIGN DESIGNATION

ADT (CURRENT YEAR) _____
ADT (FUTURE YEAR) _____
T (HEAVY COMMERCIAL) _____
Ton Design _____
Design Speed 50 MPH
Design Speed not achieved at:
STA. 0+40.09 TO STA. 17+75.64 MPH 40
STA. _____ TO STA. _____ MPH _____

SPECIFICATIONS

THE "STANDARD" SPECIFICATIONS FOR HIGHWAY CONSTRUCTION, DATED JAN. 1, 19____, SHALL GOVERN.

ALL APPLICABLE FEDERAL, STATE AND LOCAL LAWS AND ORDINANCES WILL BE COMPLIED WITH, IN THE CONSTRUCTION OF THIS PROJECT.

I HEREBY CERTIFY THAT THIS PLAN WAS PREPARED BY ME OR UNDER MY DIRECT SUPERVISION AND THAT I AM A DULY REGISTERED PROFESSIONAL ENGINEER UNDER THE LAWS OF THE STATE OF MINNESOTA.

Lawrence K. Howard DATE 10/77
COUNTY ENGINEER

ANOKA COUNTY REG. NO. 6549

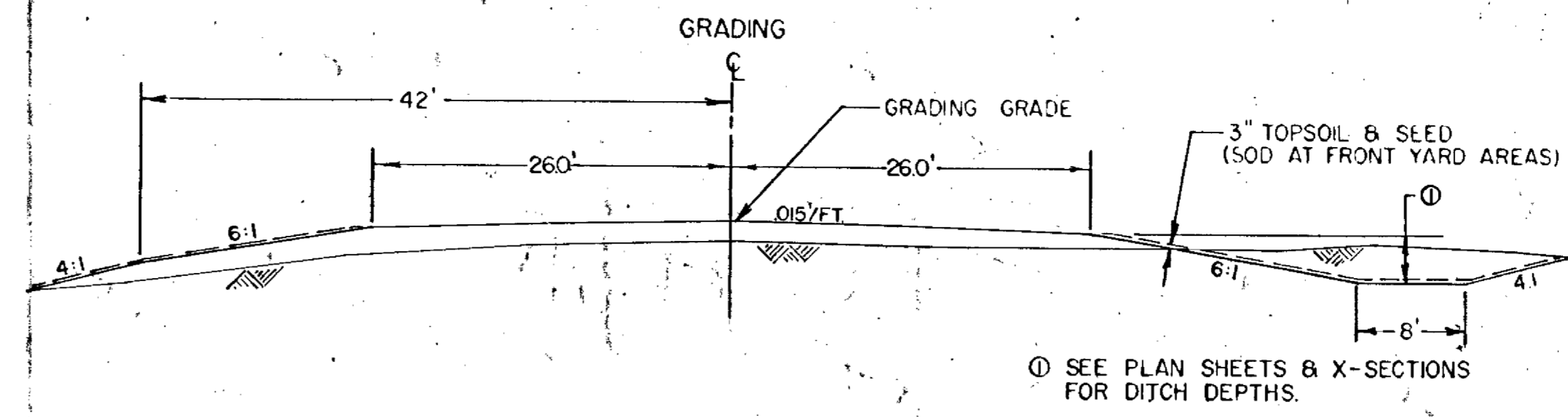
RECOMMENDED FOR APPROVAL _____ 19____
DISTRICT ENGINEER

RECOMMENDED FOR APPROVAL _____ 19____

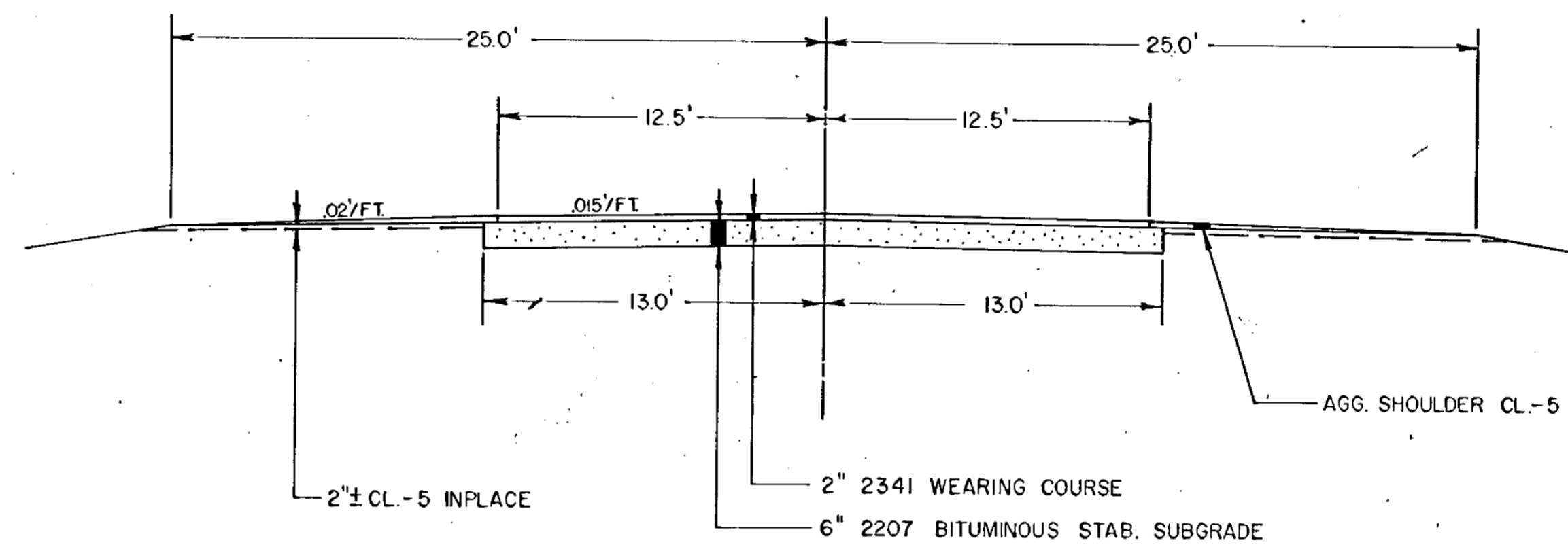
APPROVED _____ 19____
STATE AID ENGINEER

Minn. Proj. No. _____ County Proj. No. 77-15-57
State Proj. No. _____ S.A.P. _____

TYPICAL SECTIONS



FUTURE BITUMINOUS SECTION



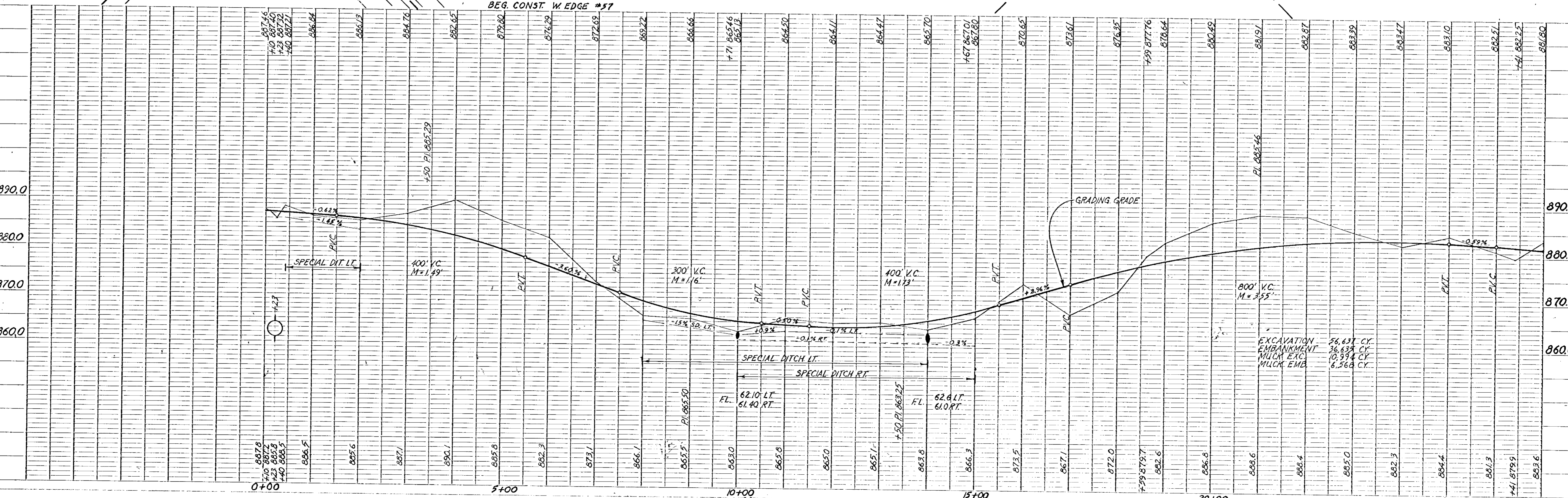
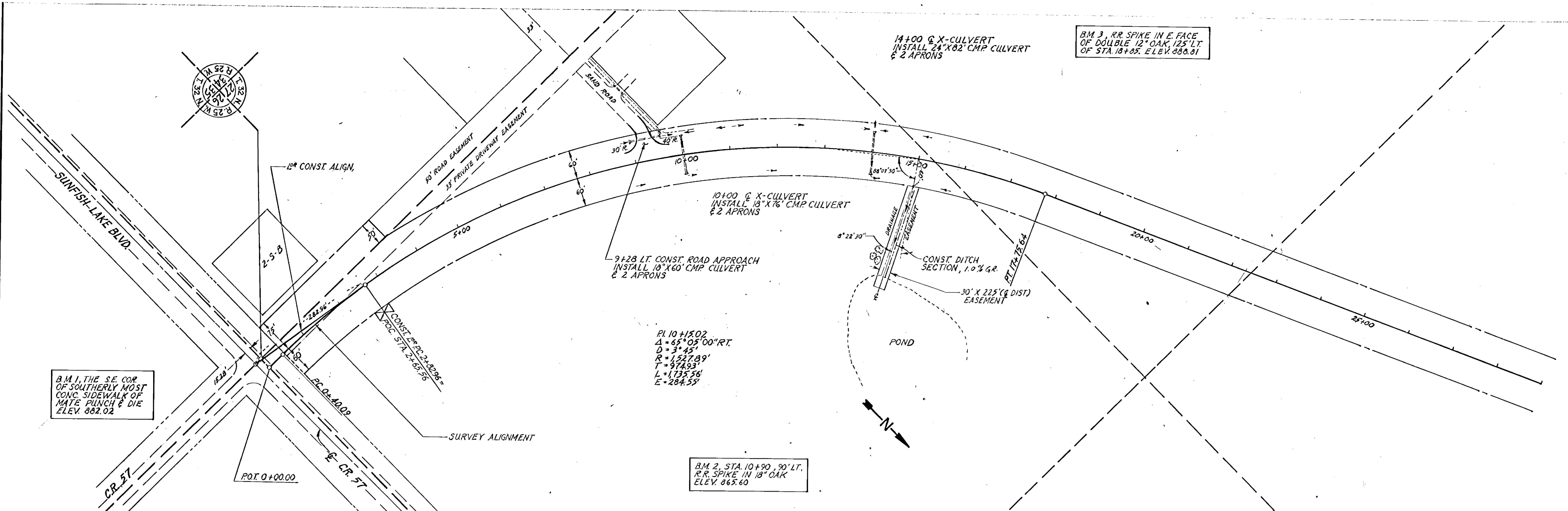


PLATE 1, PLAN PROFILE
FUGRO & ESSER CO.

BM 4, TOP OF IRON FE. POST
DRIVEN FLUSH TO GROUND
100' LT. OF STA. 33+00
ELEV. 884.17

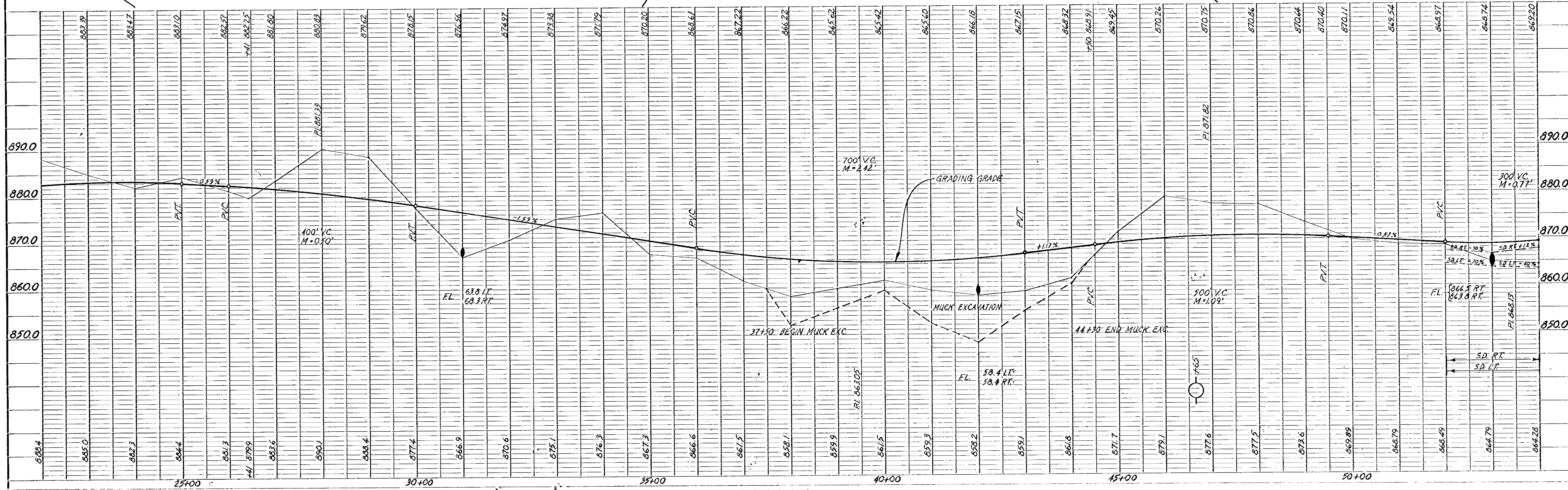
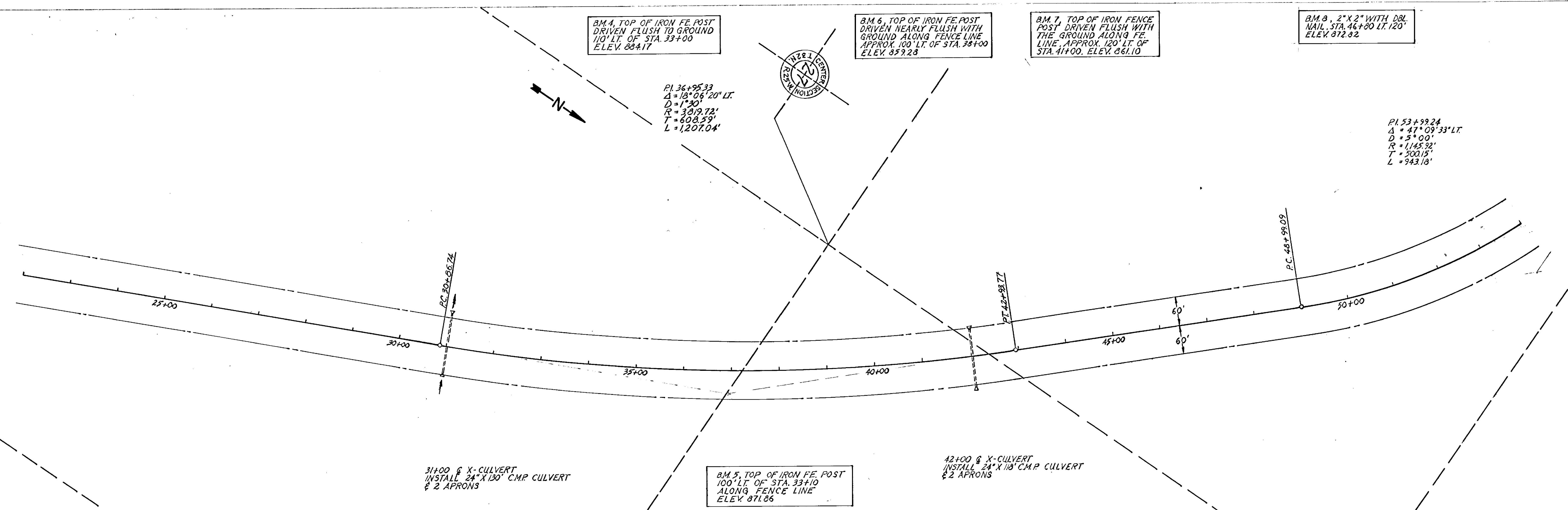
BM 6, TOP OF IRON FE. POST
DRIVEN NEARLY FLUSH WITH
GROUND ALONG FENCE LINE
APPROX. 100' LT. OF STA. 38+00
ELEV. 859.28

BM 7, TOP OF IRON FENCE
POST DRIVEN FLUSH WITH
THE GROUND ALONG FE.
LINE, APPROX. 120' LT. OF
STA. 41+00. ELEV. 861.10

BM 8, 2" X 2" WITH DBL.
NAIL, STA. 46+80 LT. 120'
ELEV. 872.82

PI. 36+95.33
 $\Delta = 18^{\circ} 06' 20''$ LT.
 $D = 1^{\circ} 30'$
 $R = 3019.72'$
 $T = 608.59'$
 $L = 1207.04'$

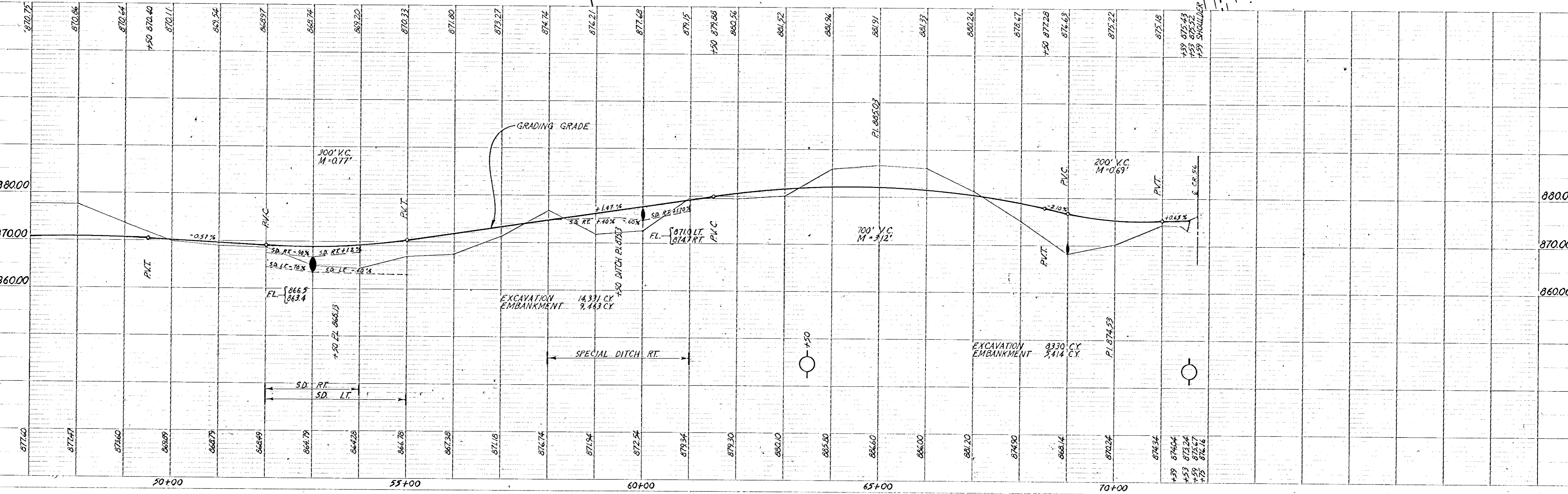
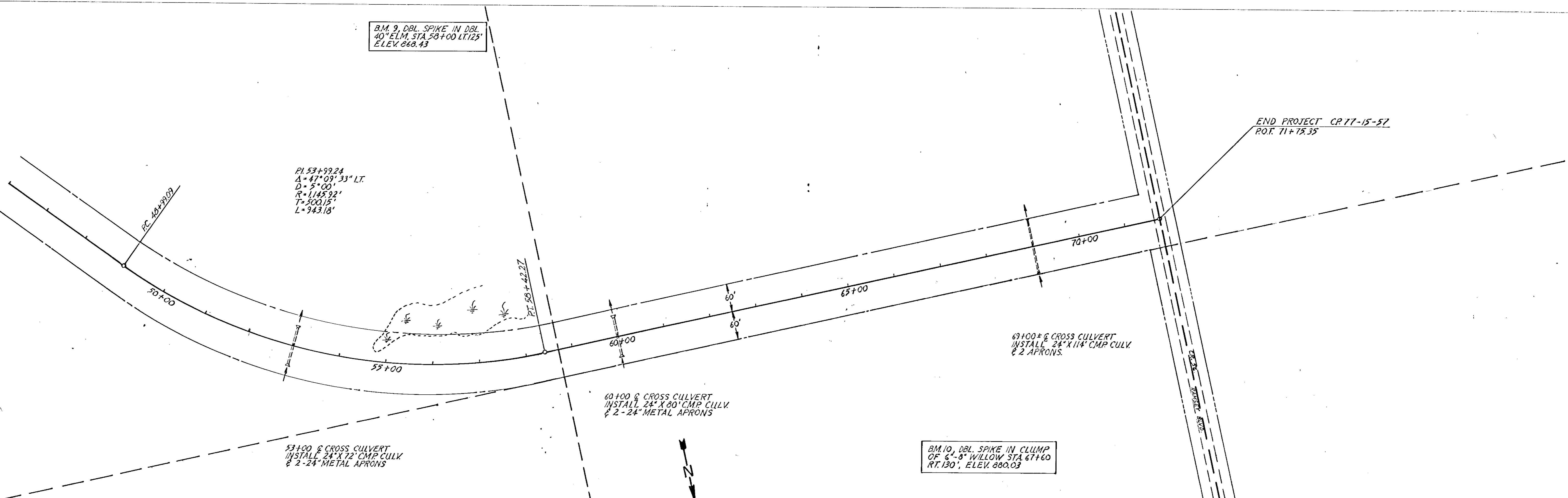
PI. 53+99.24
 $\Delta = 47^{\circ} 09' 33''$ LT.
 $D = 5^{\circ} 00'$
 $R = 1145.92'$
 $T = 500.15'$
 $L = 943.18'$



B.M. 9, DBL. SPIKE IN DBL.
40" ELM. STA. 53+00 LT. 25'
ELEV. 868.43

PI. 53+99.24
Δ = 47° 09' 33" LT.
D = 5° 00'
R = 1145.92'
T = 300.15'
L = 343.18'

END PROJECT CP 77-15-57
P.O.F. 71+75.35



HIGHWAY LOCATION AND DILET
PLATE SINGLE PLAN AND PROFILE LINE DOT
* BLS: JHE
PRINTED IN U.S.A.