

ANOKA COUNTY HIGHWAY DEPARTMENT

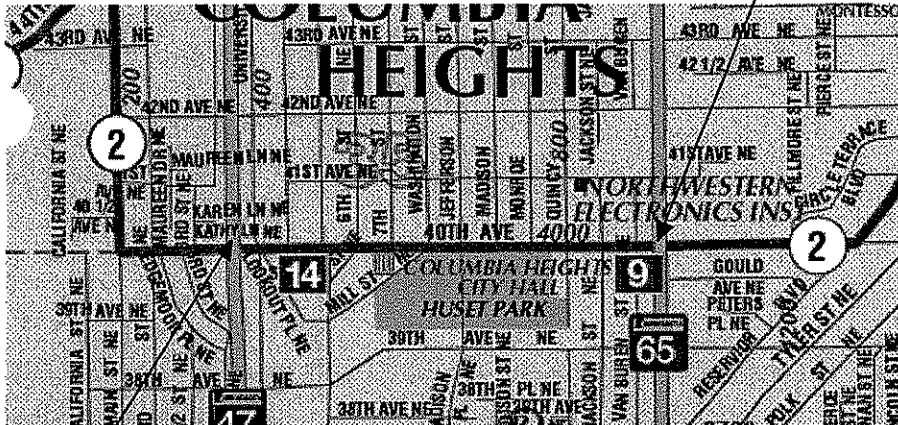
CONSTRUCTION PLAN FOR:

EDGE MILL AND OVERLAY

CSAH NO.: 2
FROM TH 47
TO TH 65
FROM
TO

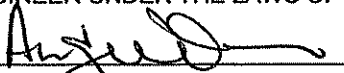
PROJECT NO: 07-18-02
GROSS LENGTH 3935 FT 0.7 MI
BRIDGES LENGTH 0 FT 0.00 MI
EXCEPTION LENGTH 0 FT 0.00 MI
NET LENGTH 3935 FT 0.7 MI

END PROJECT C.P. 07-18-02 STATION 49+35



BEGIN PROJECT C.P. 07-18-02 STATION 10+00

I HEREBY CERTIFY THAT THIS PLAN WAS PREPARED BY ME OR UNDER MY DIRECT SUPERVISION AND THAT I AM A DULY LICENSED PROFESSIONAL ENGINEER UNDER THE LAWS OF THE STATE OF MINNESOTA

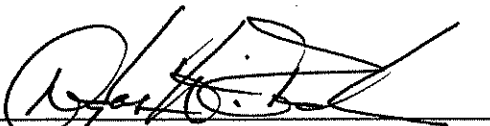

ANDREW J. WITTER, P.E.

LIC. NO. 42757 DATE 5/11/07

GOVERNING SPECIFICATIONS:

THE 2005 EDITION OF THE MINNESOTA DEPARTMENT OF TRANSPORTATION "STANDARD SPECIFICATIONS FOR CONSTRUCTION" SHALL GOVERN. ALL TRAFFIC CONTROL DEVICES SHALL CONFORM TO THE MMUTCD, INCLUDING "FIELD MANUAL FOR TEMPORARY TRAFFIC CONTROL ZONE CUTS - JANUARY 2007."

APPROVED 5/15, 2007


ANOKA COUNTY ENGINEER

STATEMENT OF ESTIMATED QUANTITIES

ITEM NO.	ITEM	NOTE NO.	UNIT	TOTAL EST. QUANT.
2021.501	MOBILIZATION		LUMP SUM	1
2232.501	MILL BITUMINOUS SURFACE (1 1/2")MAINLINE AND ST. APPROACHES		SQ YD	5247
2232.501	MILL BITUMINOUS SURFACE (1 1/2")(JOINTS)		SQ YD	76
2357.502	BITUMINOUS MATERIAL FOR TACK COAT		GALLON	1246
2360.609	TYPE MV3 WEAR MIXTURE (MAINLINE) (MVWE35035 E)		TON	2150
2504.602	ADJUST GATE VALVE AND BOX		EACH	20
2506.522	ADJUST FRAME AND RING CASTING		EACH	20
2563.601	TRAFFIC CONTROL		LUMP SUM	1
2563.610	POLICE OFFICER		HOUR	16
2564.602	PAVEMENT MESSAGE (LT/RT ARROW) HOT TAPE		EACH	4
2564.602	PAVEMENT MESSAGE (PED X-ING) HOT TAPE		EACH	4
2564.602	PAVEMENT MESSAGE (SCHOOL X-ING) HOT TAPE		EACH	4
2564.602	PAVEMENT MESSAGE (STOP) HOT TAPE		EACH	8
2564.603	4" BROKEN LINE WHITE - EPOXY		LIN FT	1574
2564.603	4" DOUBLE SOLID LINE YELLOW - EPOXY		LIN FT	3431
2564.603	24" SOLID LINE WHITE - HOT TAPE		LIN FT	450
2564.618	3' X 6' ZEBRA CROSSWALK - HOT TAPE		SQ FT	1872
2580.603	REMOVABLE LANE TAPE		LIN FT	315

BASIS OF PLANNED QUANTITIES

2211.501	AGGREGATE BASE CLASS 5	5 TONS / DRIVEWAY
2357.502	BITUMINOUS MATERIAL FOR TACK COAT	.05 GAL / SQ YD
2360.609	TYPE MV3 WEAR MIXTURE (MVWE35035 E)	115 LBS / SQYD / IN THICKNESS
2580.603	REMOVABLE LANE TAPE	4' AT 50' INTERVALS FOR SKIPS


 ANDREW J. WITTER, P.E.

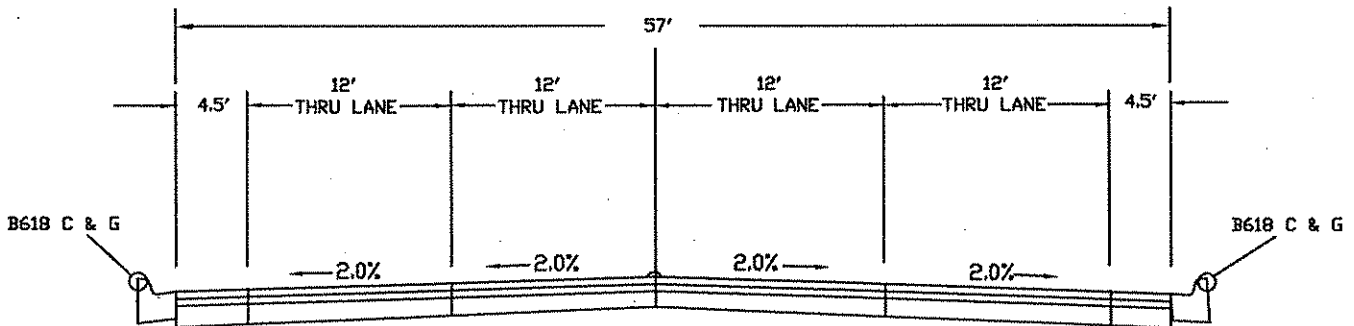
LIC. NO. 42757 DATE 5/1/07

TYPICAL SECTIONS

EXISTING SECTION

STA 10+00 TO 49+35

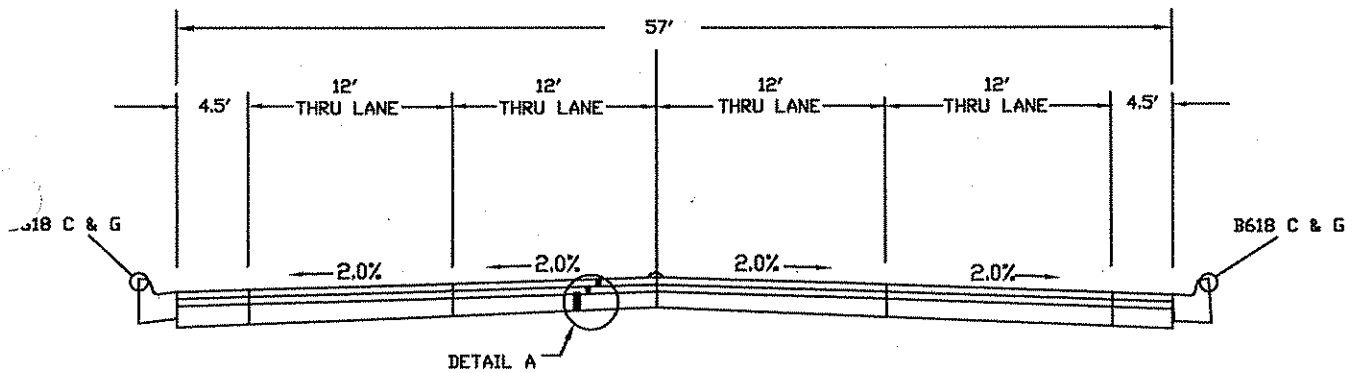
CONSTRUCTION C/L



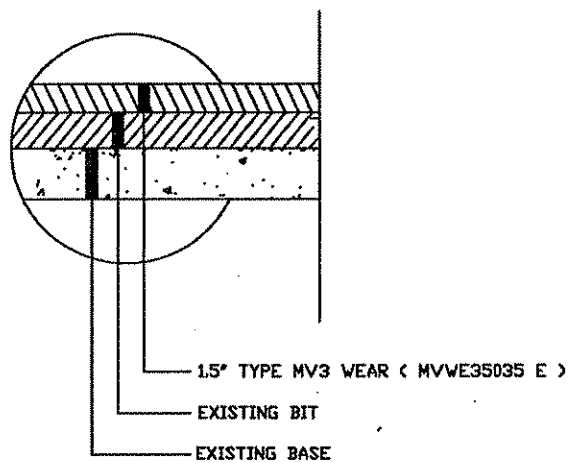
PROPOSED SECTION

STA 10+00 TO 49+35

CONSTRUCTION C/L



DETAIL A-PROPOSED MAINLINE



NOTE: NOT TO SCALE

CERTIFIED BY Andrew J. Witter

ANDREW J. WITTER, P.E.

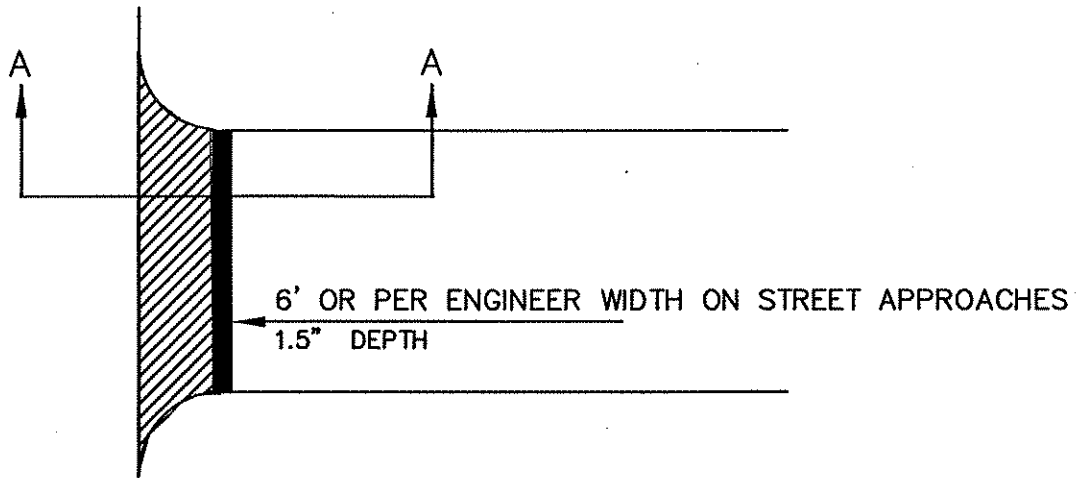
C.P. 07-18-02

LIC. NO. 42757 DATE 5/10/07

SHEET NO. 3 OF 4 SHEETS

TYPICAL SECTIONS

STREET APPROACHES



JOINT DETAILS

STREET APPROACHES/B618 C & G

STA 10+00 - 49+35 (LEB/LWB)

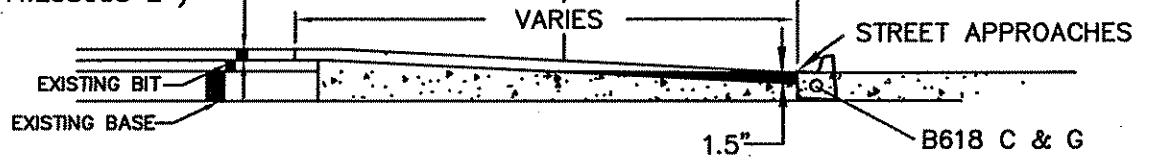
BEGINNING AND END OF PROJECT

MILL JOINT

6' ALONG B618 C & G

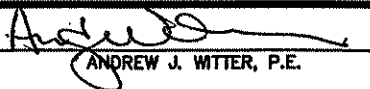
6' ON PAVED STREET APPROACHES

1.5" MV3 WEAR (MVWE35035 E)



NOTE: NOT TO SCALE

CERTIFIED BY


ANDREW J. WITTER, P.E.

C.P. 07-18-02

LIC. NO. 42757

DATE 5/11/07

SHEET NO. 4 OF 4 SHEETS