

PLAN SYMBOLS

- COUNTY LINE.....
- TOWNSHIP OR RANGE LINE.....
- SECTION LINE.....
- QUARTER LINE.....
- SIXTEENTH LINE.....
- RIGHT OF WAY LINE.....
- SLOPE EASEMENT.....
- EXISTING RIGHT OF WAY.....
- PROPERTY LINE.....
- CORPORATE OR CITY LIMITS.....
- RETAINING WALL.....
- RAILROAD.....
- RAILROAD RIGHT OF WAY.....
- RIVER OR CREEK.....
- DRAINAGE DITCH.....
- CULVERT.....
- DROP INLET.....
- GUARD RAIL.....
- BARBED WIRE FENCE.....
- WOVEN WIRE FENCE.....
- CHAIN LINK FENCE.....
- WOOD FENCE.....
- STONE WALL OR FENCE.....
- HEDGE.....

- LOWLAND.....
- TIMBER.....
- ORCHARD.....
- BRUSH.....
- NURSERY.....

- CATTLE GUARD.....

- OVERPASS (Highway Over).....

- UNDERPASS (Highway Under).....

- BRIDGE.....

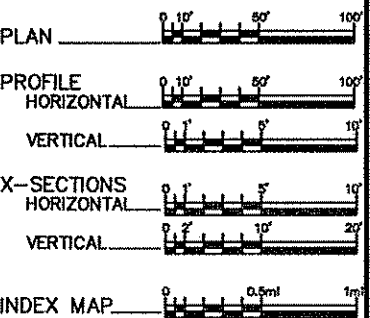
- BUILDING (One Story Frame).....
- F-FRAME C-CONCRETE.....
- S-STONE T-TILE.....
- B-BRICK ST-STUCCO.....

- RAILROAD CROSSING BELL.....
- RAILROAD CROSSING GATE.....
- MANHOLE.....
- CATCH BASIN.....
- FIRE HYDRANT.....
- CAST IRON MONUMENT.....
- IRON PIN.....
- GRAVEL PIT.....
- SAND PIT.....
- BORROW PIT.....
- ROCK QUARRY.....

UTILITY SYMBOLS

- POWER POLE LINE.....
- TELEPHONE OR TELEGRAPH POLE LINE.....
- JOINT TELEPHONE & POWER ON POWER POLES.....
- ON TELEPHONE POLES.....
- ANCHOR.....
- STEEL TOWER.....
- STREET LIGHT.....
- PEDESTAL (Cable Terminal).....
- GAS MAIN.....
- WATER MAIN.....
- TELEPHONE CABLE IN CONDUIT.....
- ELECTRIC CABLE IN CONDUIT.....
- TELEPHONE MANHOLE.....
- ELECTRIC MANHOLE.....
- BURIED TELEPHONE CABLE.....
- BURIED ELECTRIC CABLE.....
- AERIAL TELEPHONE CABLE.....
- SEWER (Sanitary or Storm).....
- SEWER MANHOLE.....

SCALES



MINNESOTA DEPARTMENT OF TRANSPORTATION

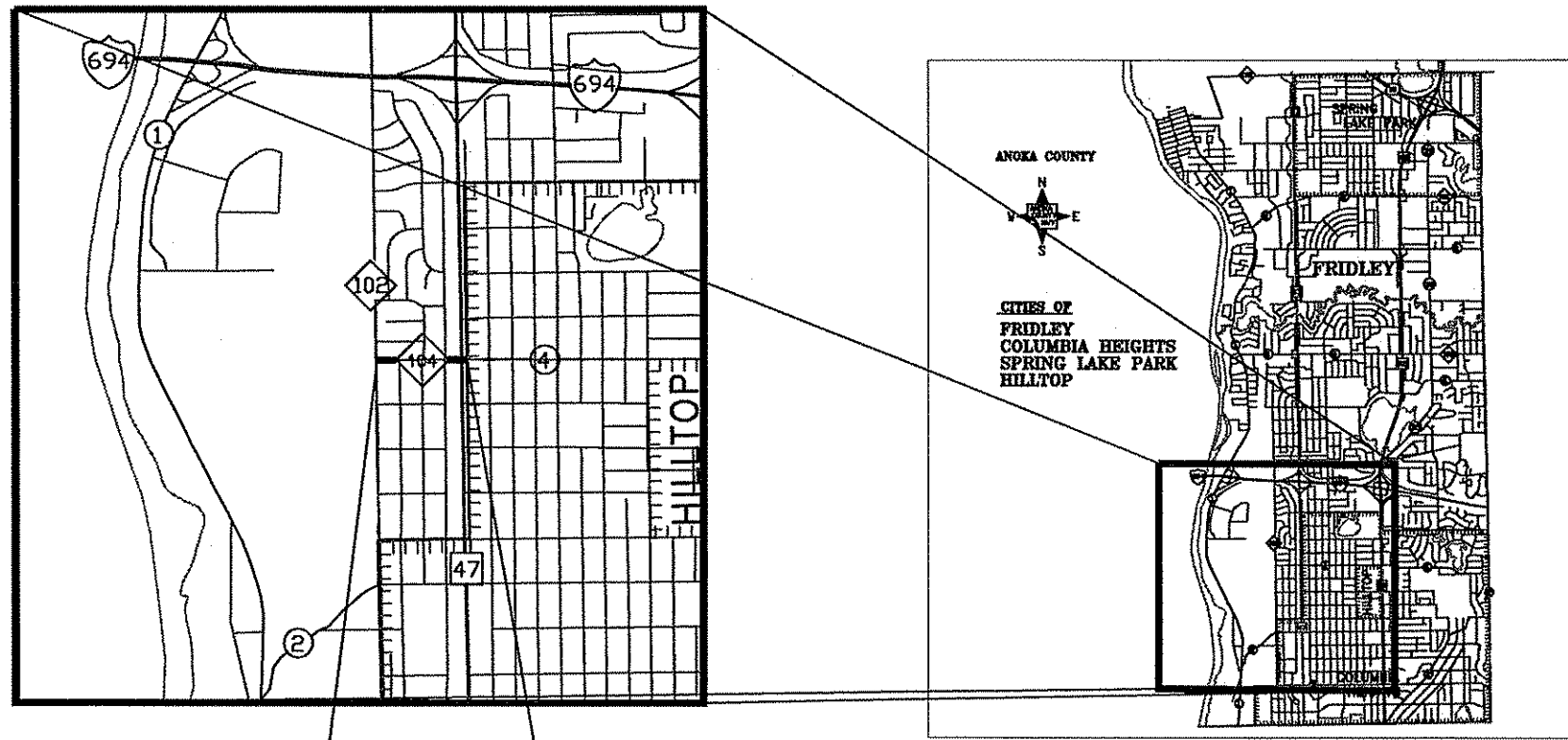
ANOKA COUNTY

CONSTRUCTION PLAN FOR BITUMINOUS EDGE MILL, & BIT SURFACING

LOCATED ON C.R. 104 FROM C.R. 102 TO T.H. 47

COUNTY PROJ. NO. 03-07-104
C.R. 104

GROSS LENGTH	1175.00 FEET	0.222 MILES
BRIDGES-LENGTH	0.00 FEET	0.000 MILES
EXCEPTIONS-LENGTH	0.00 FEET	0.000 MILES
NET LENGTH	1175.00 FEET	0.222 MILES



BEGIN C.P. 03-07-104 STA. 10+00
END C.P. 03-07-104 STA. 21+75

MINN. PROJ. NO. _____
MINN. PROJ. NO. _____

GOVERNING SPECIFICATIONS

THE 2000 EDITION OF THE MINNESOTA DEPARTMENT OF TRANSPORTATION "STANDARD SPECIFICATIONS FOR CONSTRUCTION" SHALL GOVERN. ALL TRAFFIC CONTROL DEVICES SHALL CONFORM TO THE MMUTCD, INCLUDING "FIELD MANUAL FOR TEMPORARY TRAFFIC CONTROL ZONE LAYOUTS - JANUARY, 2001."

INDEX

SHEET NO.	DESCRIPTION
1	TITLE
2	SEQ / TABULATIONS
3	TYPICAL / DETAILS
4	PLAN
5-6	SIGNAL LOOP DETAILS
7	STRIPING PLAN


THIS PLAN CONTAINS 7 SHEETS

DESIGN DESIGNATION

ESAL ₂₀	641,580
R VALUE	20
ADT (2002)	4451
Proj. ADT (2022)	6677
Proj. HCADT (2022)	394
Soil Factor	NA
TON DESIGN	

Functional Classification MINOR ARTERIAL B
 No. of Traffic Lanes 2 No. of Parking Lanes 0
 Design Speed 30 MPH
 Based on Stopping Sight Distance
 Height of eye 3.5' Height of object 0.5'
 Design Speed not achieved at:
 STA. _____ TO STA. _____ MPH _____
 STA. _____ TO STA. _____ MPH _____
 STA. _____ TO STA. _____ MPH _____

Approved 4/29/03 
ANOKA COUNTY ENGINEER

I HEREBY CERTIFY THAT THIS PLAN WAS PREPARED BY ME OR UNDER MY DIRECT SUPERVISION AND THAT I AM A DULY LICENSED PROFESSIONAL ENGINEER UNDER THE LAWS OF THE STATE OF MINNESOTA.
 PRINT NAME: MARK DALY
 SIGNATURE: 
 DATE: 4/29/03 LICENSE NO. 21763

DRAWN BY J.F. DATE 4/29/03
 DESIGN BY G.A. DATE 4/29/03
 CHECKED BY _____ DATE _____



ANOKA COUNTY
HIGHWAY DEPT.

STATE PROJECT NO. _____
 STATE AID PROJECT NO. _____
 STATE AID PROJECT NO. _____
 COUNTY PROJECT NO. 03-07-104

TITLE SHEET
 Sheet 1 of 7 Sheets

A. STATEMENT OF ESTIMATED QUANTITIES					
TAB	ITEM NO.	ITEM	NOTE NO.	UNIT	QTY.
	2021.501	MOBILIZATION		LUMP SUM	1.00
F	2232.501	MILL BITUMINOUS SURFACE (1 1/2")		SQ YD	1858.00
D	2350.609	TYPE MV 3 WEARING COURSE MIXTURE	1	TON	545.00
E	2357.502	BITUMINOUS MATERIAL FOR TACK COAT		GALLON	285.00
I	2504.602	ADJUST GATE VALVE AND BOX		EACH	6.00
J	2506.522	ADJUST FRAME AND RING CASTING		EACH	2.00
K	2506.522	ADJUST FRAME AND CASTING (SANITARY)		EACH	5.00
	2563.601	TRAFFIC CONTROL		LUMP SUM	1.00
	2563.604	CONSTRUCTION SIGN SPECIAL (DIAMOND GRADE)	2	SQ FT	112.00
L	2564.603	4" SOLID LINE WHITE-EPOXY		LIN FT	1770.00
L	2564.603	4" SOLID LINE YELLOW-EPOXY		LIN FT	729.00
	2564.603	4" BROKEN LINE YELLOW-EPOXY		LIN FT	240.00
	2564.603	24" SOLID LINE WHITE-POLYPREFORMED		LIN FT	27.00
	2564.604	ZEBRA CROSSWALK - POLYPREFORMED		SQ FT	180.00
H	2565.602	LOOP DETECTOR 6' X 6'		EACH	4.00
	2580.501	TEMPORARY LANE MARKINGS		LIN FT	301.00

B. BASIS FOR QUANTITIES	
SPEC. NO.	RATE
2350	TYPE MV 3 WEARING COURSE (MVWE35035B) (110 LBS/IN/SY)
2357	BITUMINOUS MATERIAL FOR TACK COAT 0.05 GAL. / SQ YD. / PER LIFT APPLIED

C. CONSTRUCTION NOTES	
NOTE NO.	DISCRIPTION
1	INCLUDES QUANTITY FOR ADDING 1/4" TO THE DESIGN THICKNESS.
2	2 - 8' X 7' SIGNS, SEE SPECIAL PROVISIONS.

D. TYPE MV3 WEARING CORSE MAIN LINE 1.75" (110LBS/IN/SY)					
	STA.	STA.	L'	W'	SQ. YDS.
C/L	1000	2175	1175.0	VAR.	5620.0
			(AREA FROM AUTOCAD DRAWING) SQ. YDS. = 5620.0		
					TONS = 541.0

E. BITUMINOUS MATERIAL FOR TACK			
	SQ YDS	GAL / SQ YD	GALLONS
MV3 WEAR MAIN LINE	5620.0	0.05	281.0
			TOTAL GALLONS = 281.0

F. MILL BITUMINOUS SURFACE 1 1/2"					
	STA.	STA.	W'		SQ. YDS.
C/L	1000		4.0	AREA FROM AUTOCAD	44.4
C/L	2175		4.0	AREA FROM AUTOCAD	34.7
				(ALONG C&G LIP)	
LT.	1000	2175	6.0	AREA FROM AUTOCAD	798.7
RT.	1000	2175	6.0	AREA FROM AUTOCAD	798.7
					SQ. YDS = 1858.0

G. TEMPORARY LANE MARKING (4'/50'/LIFT)						
STA.	STA.	LOC.	LENGTH	TAPE LENGTH	LIFTS	LIN. FT.
1000	2175	C/L	1175	94.0	1	94.0
						LIN. FT. = 94.0

H. LOOP DETECTOR 6' X 6'		
		EACH
		TOTAL = 4

I. ADJUST GATE VALVE & BOX			
	STA.	OFFSET	EACH
	10+06.42	12.56 RT.	1
	12+98.90	14.97 RT.	1
	16+30.36	13.13 RT.	1
	16+30.49	5.1 RT.	1
	19+55.07	7.46 RT.	1
	19+57.57	9.95 RT.	1
			TOTAL = 6

J. ADJUST FRAME & RING CASTING (STORM)			
	STA.	OFFSET	EACH
	16+59.14	24.15 LT.	1
	19+56.84	8.32 LT.	1
			TOTAL = 2

K. ADJUST FRAME & RING CASTING (SAN.)			
	STA.	OFFSET	EACH
	10+52.99	1.34 RT.	1
	13+10.31	0.90 RT.	1
	16+41.96	1.10 RT.	1
	19+66.99	0.84 LT.	1
	19+74.24	0.30 LT.	1
			TOTAL = 5

L. STRIPING & PAVEMENT MARKINGS	
	LIN. FT.
4" SOLID LINE WHITE-EPOXY	1770
4" SOLID LINE YELLOW-EPOXY	729
4" BROKEN LINE YELLOW-EPOXY	240
24" SOLID LINE WHITE-POLYPREFORMED	27
	SQ. FT.
ZEBRA CROSSWALK-POLYPREFORMED	180

NO	DATE	BY	CHKD	APPR	REVISION

I HEREBY CERTIFY THAT THIS PLAN WAS PREPARED BY ME OR UNDER MY DIRECT SUPERVISION AND THAT I AM A DULY LICENSED PROFESSIONAL ENGINEER UNDER THE LAWS OF THE STATE OF MINNESOTA.

PRINT NAME: MARK DALY

SIGNATURE: [Signature]

DATE: 4/29/2003 LICENSE NO. 21763

DRAWN BY: J.E. DATE: 4/29/03

DESIGN BY: G.A. DATE: 4/29/03

CHECKED BY: _____ DATE: _____



ANOKA COUNTY
HIGHWAY DEPT.

STATE PROJECT NO. _____

STATE AID PROJECT NO. _____

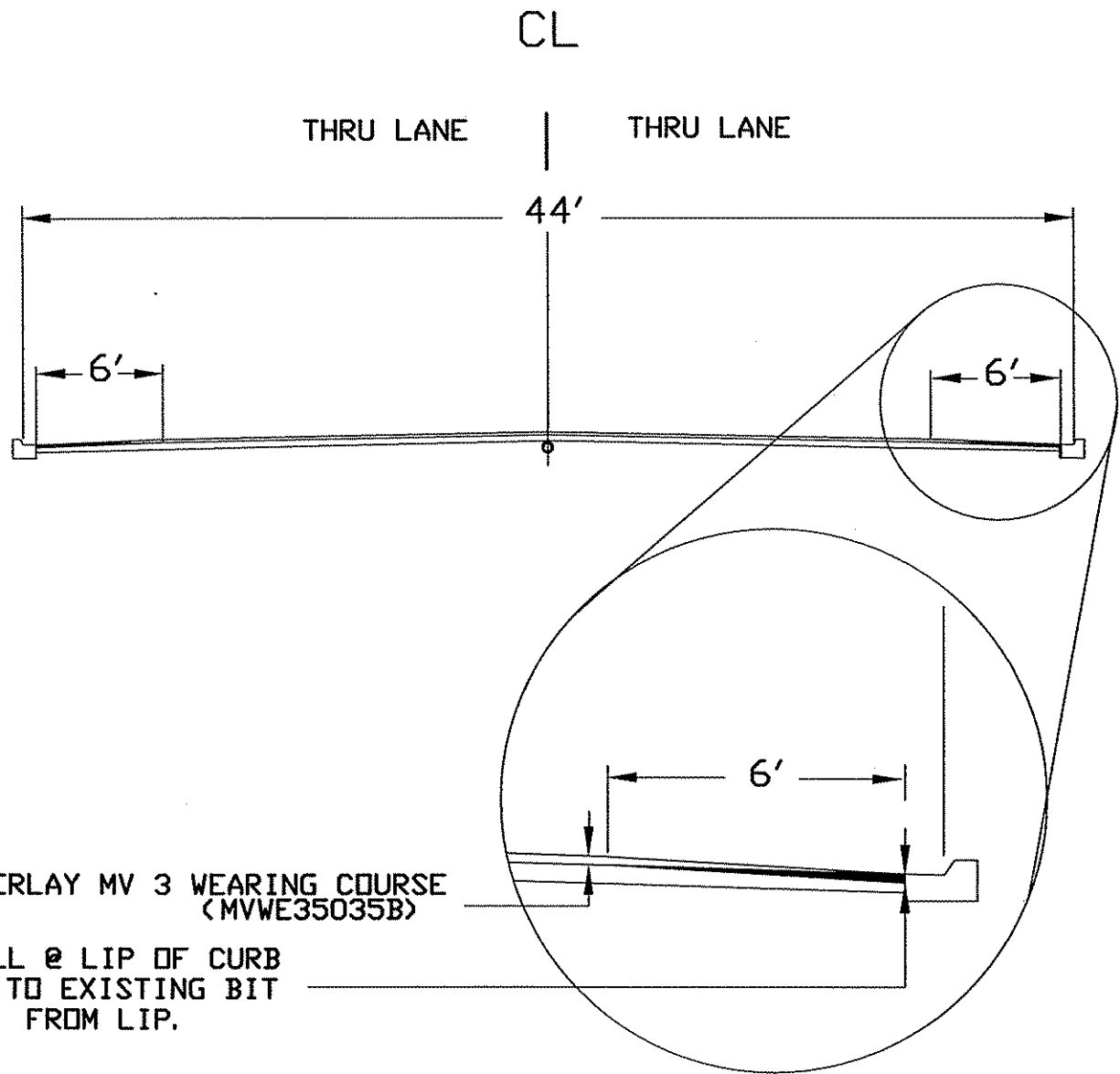
STATE AID PROJECT NO. _____

COUNTY PROJECT NO. 03-07-104

SEQ / TABULATIONS

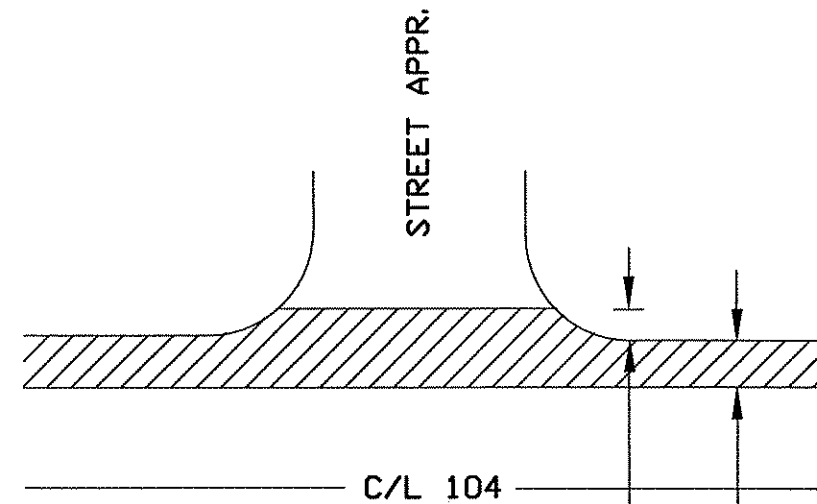
Sheet 2 of 7 Sheets

TYPICAL & DETAILS

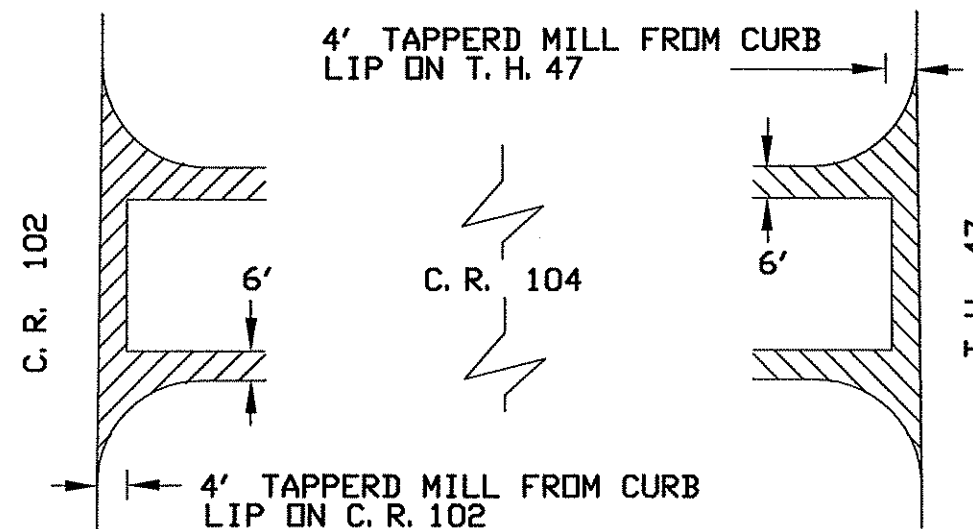


1 1/2" OVERLAY MV 3 WEARING COURSE
(MVWE35035B)

1 1/2" MILL @ LIP OF CURB
TAPERING TO EXISTING BIT
SURFACE 6' FROM LIP.



MILL 4' INTO RAD. @ STREET APPROACHES
6' TAPERED MILL FROM LIP OF CURB



NO	DATE	BY	CHKD	APPR	REVISION

I HEREBY CERTIFY THAT THIS PLAN WAS PREPARED BY ME OR UNDER MY DIRECT SUPERVISION AND THAT I AM A DULY LICENSED PROFESSIONAL ENGINEER UNDER THE LAWS OF THE STATE OF MINNESOTA.

PRINT NAME: **MARK DALY**

SIGNATURE: *[Signature]*

DATE: **4/29/2003** LICENSE NO. **21763**

DRAWN BY: **J.F.** DATE: **4/29/03**

DESIGN BY: **G.A.** DATE: **4/29/03**

CHECKED BY: _____ DATE: _____



ANOKA COUNTY
HIGHWAY DEPT.

STATE PROJECT NO. _____

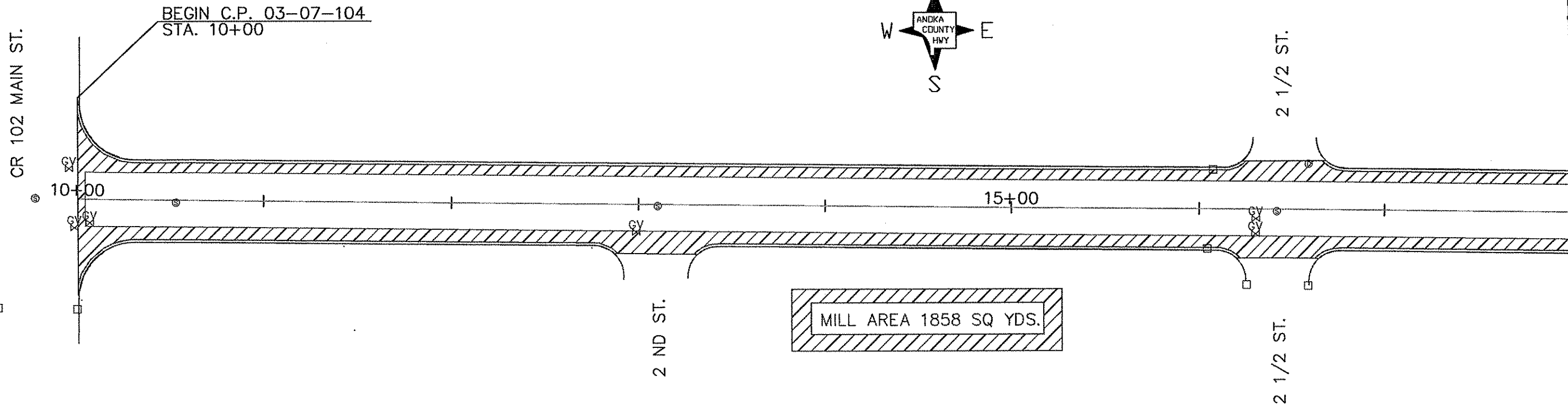
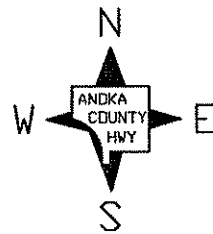
STATE AID PROJECT NO. _____

STATE AID PROJECT NO. _____

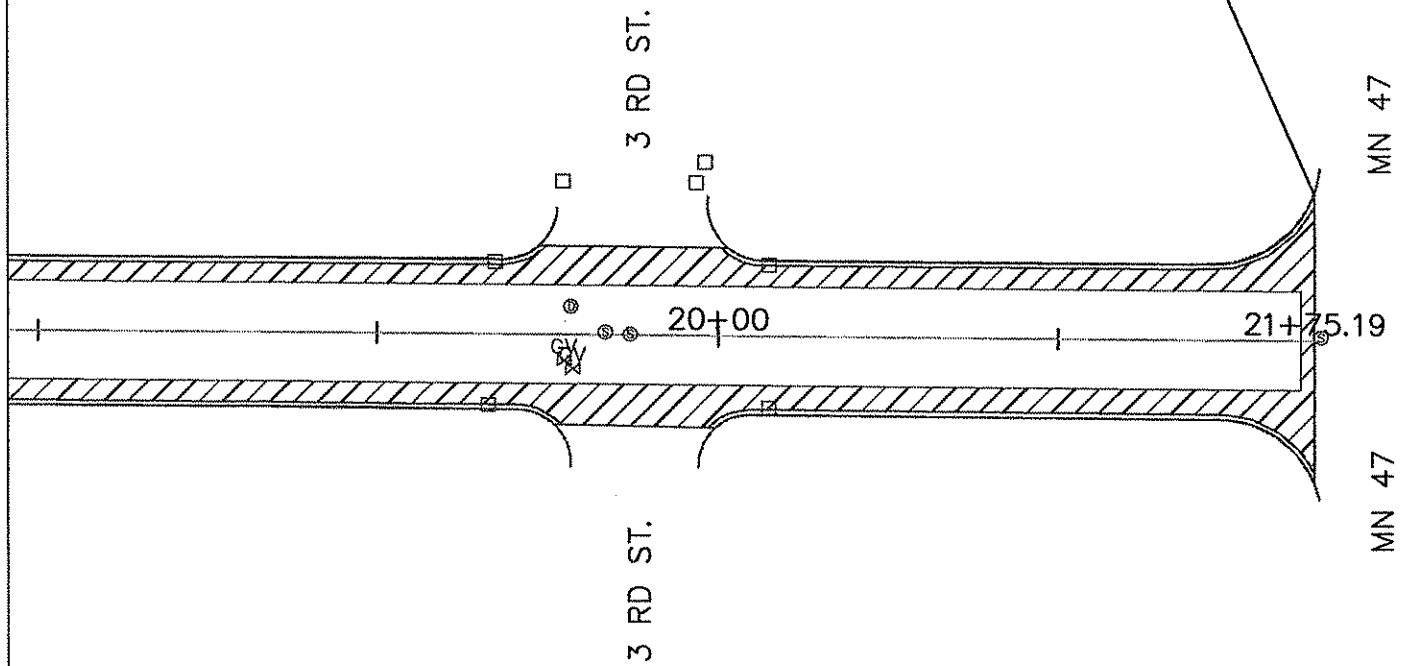
COUNTY PROJECT NO. **03-07-104**

TYPICAL & DETAILS

Sheet **3** of **7** Sheets



END C.P. 03-07-104
STA. 21+75



ADJUST M.H.'S & GATE VALVES

GATE VALVES		
	STA.	OFFSET
1)	10+06.42	12.56 RT.
2)	12+98.90	14.97 RT.
3)	16+30.36	13.13 RT.
4)	16+30.49	5.10 RT.
5)	19+55.07	7.46 RT.
6)	19+57.57	9.95 RT.

SAN. MH'S		
	STA.	OFFSET
1)	10+52.99	1.34 RT.
2)	13+10.31	0.90 RT.
3)	16+41.96	1.10 RT.
4)	19+66.99	0.84 LT.
5)	19+74.24	0.30 LT.

STORM MH'S		
	STA.	OFFSET
1)	16+59.14	24.15 LT.
2)	19+56.84	8.32 LT.

NO	DATE	BY	CHKD	APPR	REVISION

I HEREBY CERTIFY THAT THIS PLAN WAS PREPARED BY ME OR UNDER MY DIRECT SUPERVISION AND THAT I AM A DULY LICENSED PROFESSIONAL ENGINEER UNDER THE LAWS OF THE STATE OF MINNESOTA.
 PRINT NAME: **MARK DALY**
 SIGNATURE: *Mark Daly*
 DATE: **4/17/2003** LICENSE NO. **21763**

DRAWN BY: **J.F.** DATE: **4/1/03**
 DESIGN BY: **G.A.** DATE: **4/1/03**
 CHECKED BY: _____ DATE: _____

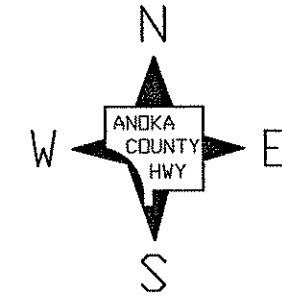
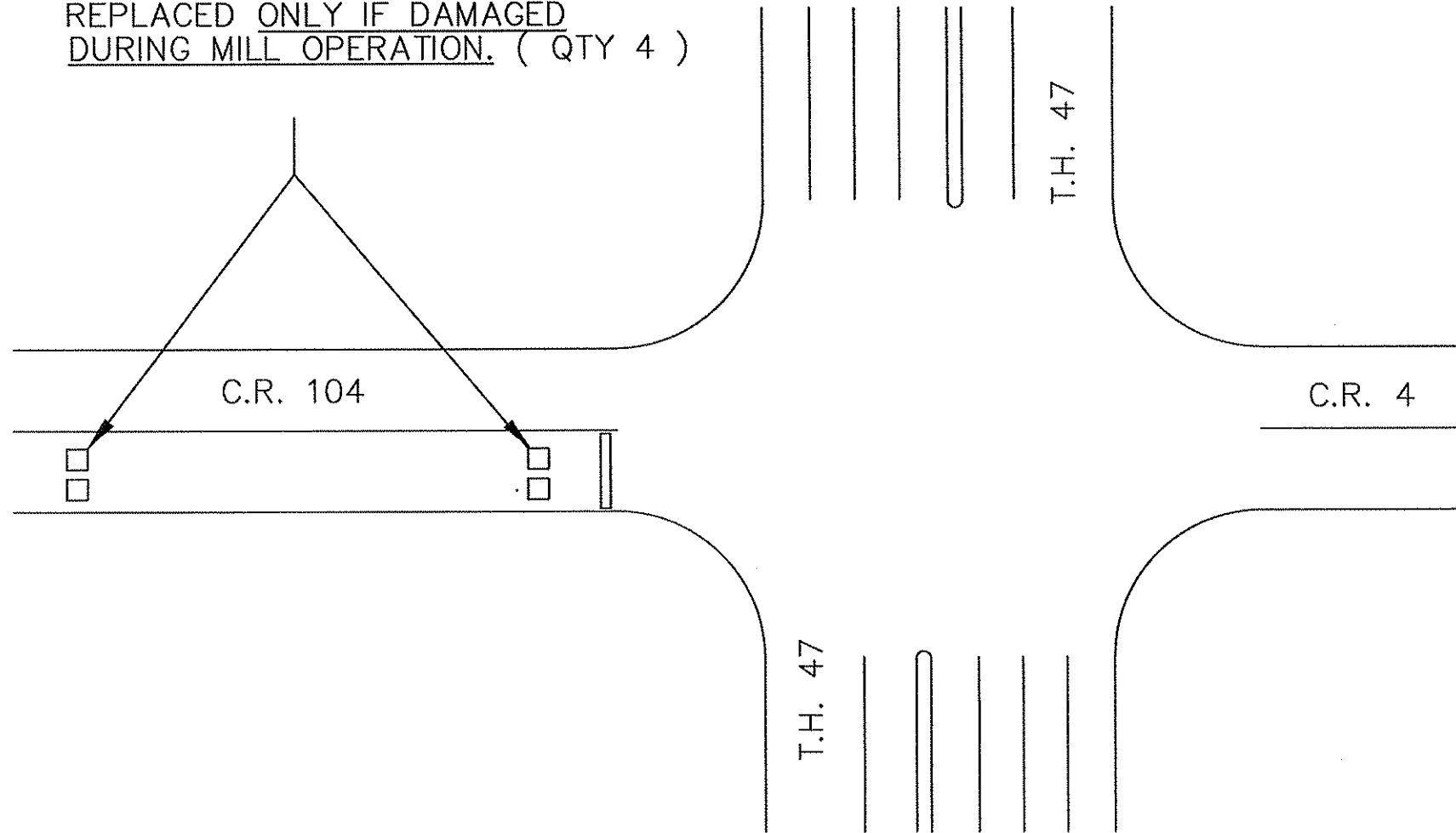


ANOKA COUNTY
HIGHWAY DEPT.

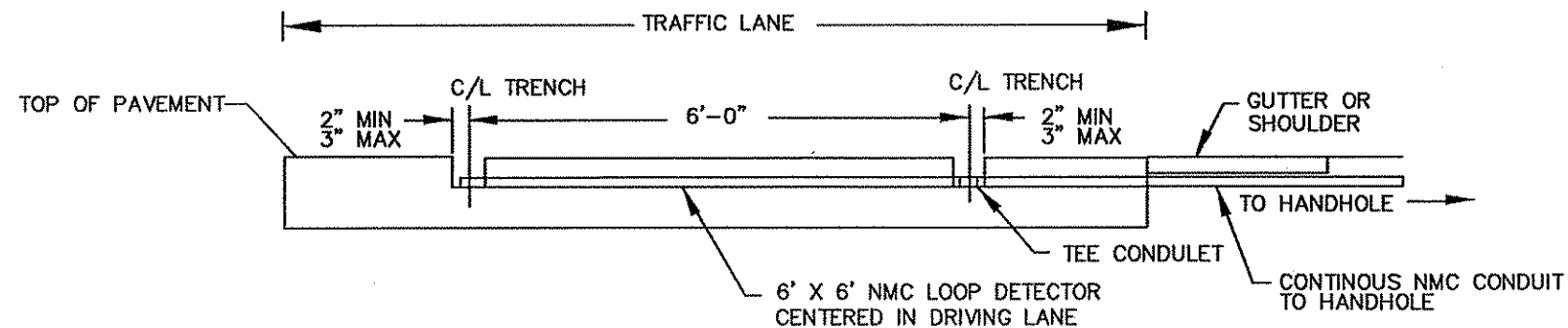
STATE PROJECT NO. _____
 STATE AID PROJECT NO. _____
 STATE AID PROJECT NO. _____
 COUNTY PROJECT NO. **03-07-104**

PLAN
 Sheet **4** of **7** Sheets

EXISTING LOOP DETECTORS TO BE
REPLACED ONLY IF DAMAGED
DURING MILL OPERATION. (QTY 4)



TYPICAL NMC LOOP DETECTOR INSTALLATION,
NOTE - SPEC NO. 2565.602
INSTALLED IN-INPLACE BITUMINOUS PAVEMENT



NO	DATE	BY	CHKD	APPR	REVISION

I HEREBY CERTIFY THAT THIS PLAN WAS PREPARED BY ME OR UNDER MY DIRECT SUPERVISION AND THAT I AM A DULY LICENSED PROFESSIONAL ENGINEER UNDER THE LAWS OF THE STATE OF MINNESOTA.
PRINT NAME: **MARK DALY**
SIGNATURE: *Mark Daly*
DATE: **4/17/2003** LICENSE NO. **21763**

DRAWN BY **J.F.** DATE **4/1/03**
DESIGN BY **G.A.** DATE **4/1/03**
CHECKED BY _____ DATE _____

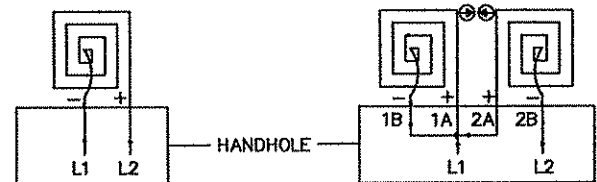
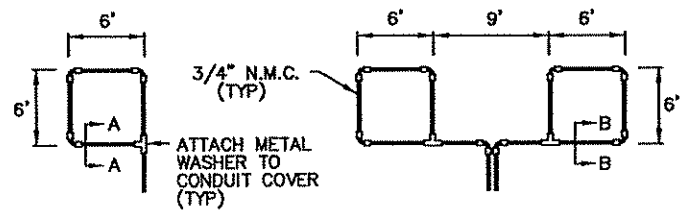


**ANOKA COUNTY
HIGHWAY DEPT.**

STATE PROJECT NO. _____
STATE AID PROJECT NO. _____
STATE AID PROJECT NO. _____
COUNTY PROJECT NO. **03-07-104**

SIGNAL LOOP DETAILS

Sheet **5** of **7** Sheets

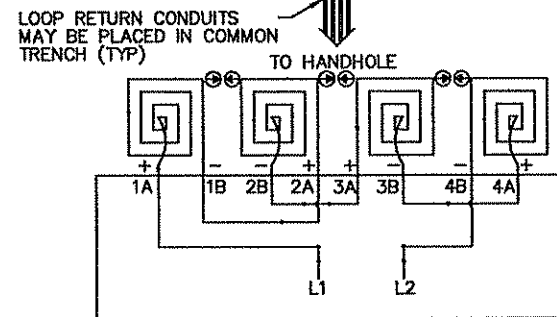
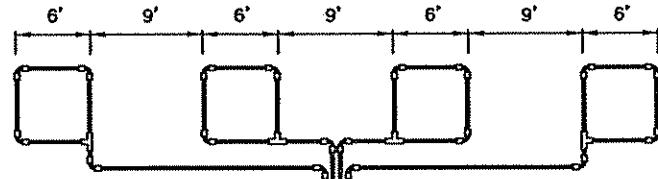


LOOP DETECTOR
DETAIL 'A'
(LOOP PHASING FOR
SINGLE CONNECTION)

LOOP CONNECTIONS SHALL BE
LABELED AND SPLICED IN THE
HANDHOLE AS FOLLOWS:

L1 TO 1A
1B TO 2A
2B TO L2

LOOP DETECTOR
DETAIL 'B'
(LOOP PHASING FOR
SERIES CONNECTION)

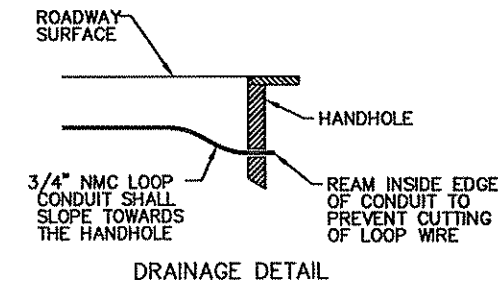
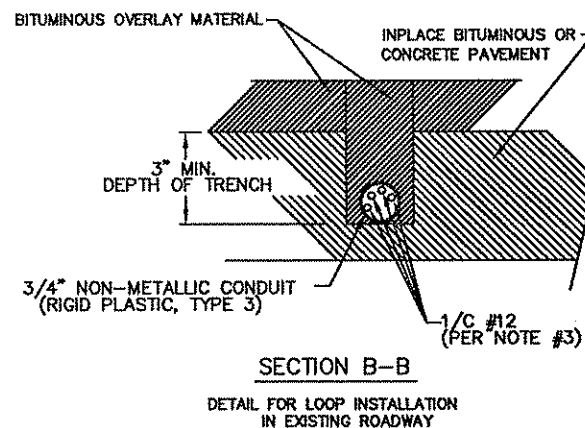
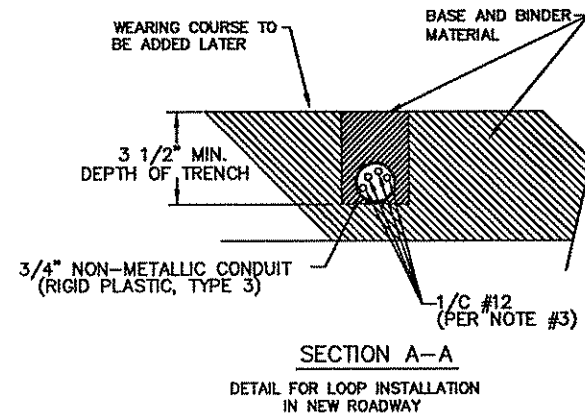


LOOP CONNECTIONS SHALL BE LABELED AND SPLICED
IN THE HANDHOLE AS FOLLOWS:

L1 TO 1A 3B TO 4A
1B TO 2A 4B TO L2
2B TO 3A

SPLICE CONTROL CABLE TO L1 & L2 IN HANDHOLE.
ALL CONDUCTORS SHALL BE TAGGED IN HANDHOLE
(1A, 1B, ECT)

LOOP DETECTOR
DETAIL 'C'
(LOOP PHASING FOR
SERIES CONNECTION)



LOOP DETECTOR WIRING

- 1) ALL CORNERS SHALL BE 90° CONDUIT BENDS.
- 2) CONNECT WIRES IN HANDHOLES USING SPLICE KIT METHOD DESCRIBED IN THE SPECIAL PROVISIONS.
- 3) LOOP DETECTOR WIRES SHALL BE #12 AWG CROSSED LINKED POLYETHYLENE (XLP). SEE SPECIAL PROVISIONS.
- 4) LOOP LEAD IN WIRES SHALL BE TWISTED A MIN. OF (5) TURNS PER FOOT THROUGH THE CONDUIT TO THE HANDHOLE.
- 5) NMC DESIGNATES NON-METALLIC CONDUIT (SPEC. 3803)
- 6) LOOPS 6' x 6' THRU 8' x 14' SHALL HAVE (4) TURNS.
- 7) LOOPS 6' x 15' AND LARGER SHALL HAVE (2) TURNS.

STANDARD PLATES	
THESE STANDARD PLATES AS APPROVED BY FHWA SHALL APPLY:	
PLATE NO.	DESCRIPTION
7035 L	CONCRETE WALK AND CURB RETURNS AT ENTRANCES
7036 E	PEDESTRIAN CURB RAMP
7100 G	CONCRETE CURB AND GUTTER (DESIGN B)
8110 D	TRAFFIC SIGNAL BRACKETING - POLE MOUNTED
8111 C	TRAFFIC SIGNAL BRACKETING - PEDESTAL MOUNTED
8112 C	PEDESTAL FOUNDATION
8114 A	PVC HANDHOLE/PULLBOX
8115 D	PEDESTRIAN PUSH BUTTON INSTALLATION
8118 C	SERVICE EQUIPMENT AND POLE-TRAFFIC CONTROL SIGNALS
8119 C	GROUND MOUNTED CABINET FOUNDATION
8120 K	PAB5 POLE FOUNDATION
8121 D	TRANSFORMER BASE AND POLE BASE PLATE
8122 C	PEDESTAL AND PEDESTAL BASE
8123 E	POLE AND MAST ARM
8124 E	MAST ARM SIGNAL HEAD MOUNTS
8126 F	PA90 AND PA100 POLE FOUNDATION

* - APPLIES TO THIS PROJECT

CONDUCTOR COLOR CODE

R	RED
O	ORANGE
BL	BLUE
WH	WHITE
R/BLK	RED WITH BLACK TRACER
O/BLK	ORANGE WITH BLACK TRACER
BL/BLK	BLUE WITH BLACK TRACER
WH/BLK	WHITE WITH BLACK TRACER
BLK	BLACK
BLK/WH	BLACK WITH WHITE TRACER
G/BLK	GREEN WITH BLACK TRACER
G	GREEN

LEGEND OF SYMBOLS

CONTROLLER AND SERVICE EQUIP. NO's	Ⓐ
SIGNAL BASE NO.	Ⓢ
SIGNAL FACE NO.	Ⓣ
LUMINAIRE NO.	Ⓛ
CONTROLLER AND CABINET	Ⓜ
CONTROLLER AND CABINET - IN PLACE	Ⓜ
HANDHOLE	Ⓜ
HANDHOLE - IN PLACE	Ⓜ
RIGID STEEL CONDUIT (RSC)	— — — — —
RIGID STEEL CONDUIT (RSC) - IN PLACE	— — — — —
SIGNAL FACE WITH BACKGROUND SHIELD	→
SIGNAL FACE W/O BACKGROUND SHIELD	→
SIGNAL FACE - IN PLACE	→
PEDESTRIAN INDICATORS	→
PEDESTRIAN INDICATORS - IN PLACE	→
PEDESTRIAN PUSH BUTTONS ON PEDESTAL OR POLE	→
PEDESTRIAN PUSH BUTTON STATION	→
TRAFFIC SIGNAL PEDESTAL	→
TRAFFIC SIGNAL PEDESTAL - INPLACE	→
TRAFFIC SIGNAL POLE AND MAST ARM	→
TRAFFIC SIGNAL POLE AND MAST ARM - IN PLACE	→
STREET LIGHT POLE AND LUMINAIRE	→
STREET LIGHT POLE AND LUMINAIRE - IN PLACE	→
MAST ARM AND LUMINAIRE	→
MAST ARM AND LUMINAIRE - INPLACE	→
WOOD POLE	→
WOOD POLE - IN PLACE	→
SOURCE OF POWER	→
RAILROAD SIGNAL - IN PLACE	→
RIGHT OF WAY LINE	→
CENTERLINE	→
EDGE OF ROADWAY	→
SHOULDERLINE	→
CURB LINE	→
STOP BAR	→
EMERGENCY VEHICLE PREEMPTION DETECTOR	→

ABBREVIATIONS

3-1(EG)	SIGNAL HEAD PHASE "3" - NO "1"	P2-1(EG)	PED INDICATION PHASE "2" - NO. "1"
BR. GR.	BARE GROUND	PB	PUSH BUTTON
CH. SW.	CHECK SWITCH	PB2-1(EG)	PUSH BUTTON PHASE "2" - NO. "1"
CLR	CLEAR	PEC	PHOTOELECTRIC CELL
D2-1(EG)	DETECTOR PHASE "2" - NO. "1"	PED	PEDESTRIAN
DWK	DON'T WALK	R	RED
EGG	EQUIPMENT GROUND	R&S	REMOVE AND SALVAGE
EVP	EMERGENCY VEHICLE PRE-EMPTION	RLTA	RED LEFT TURN ARROW
F&I	FURNISH AND INSTALL	RRTA	RED RIGHT TURN ARROW
FL	FLASH/FLASHING	RSC	RIGID STEEL CONDUIT
G	GREEN	SOP	SOURCE OF POWER
GLTA	GREEN LEFT TURN ARROW	SPR	SPARE
GRN	GREEN	ST. LHT	STREET LIGHT
GR. R	GROUND ROD	STA	STATION
GRTA	GREEN RIGHT TURN ARROW	SW	SWITCH
GTHA	GREEN THRU ARROW	SWD	SWITCHED
HH	HANDHOLE	S&R	SALVAGE AND REINSTALL
HPS	HIGH PRESSURE SODIUM	TDW	TELEPHONE DROP WIRE
JB	JUNCTION BOX	WLK	WALK
LUM	LUMINAIRE	YEL	YELLOW
NEU	NEUTRAL	YLTA	YELLOW LEFT TURN ARROW
NMC	NONMETALLIC CONDUIT	YRTA	YELLOW RIGHT TURN ARROW
		YTHA	YELLOW THRU ARROW

I HEREBY CERTIFY THAT THIS PLAN WAS PREPARED BY ME
OR UNDER MY DIRECT SUPERVISION AND THAT I AM A
DULY LICENSED PROFESSIONAL ENGINEER UNDER
THE LAWS OF THE STATE OF MINNESOTA.
PRINT NAME: MARK DALY
SIGNATURE: *Mark Daly*
DATE: 4/17/2003 LICENSE NO. 21763

DRAWN BY: J.E. DATE: 4/1/03
DESIGN BY: G.A. DATE: 4/1/03
CHECKED BY: _____ DATE: _____

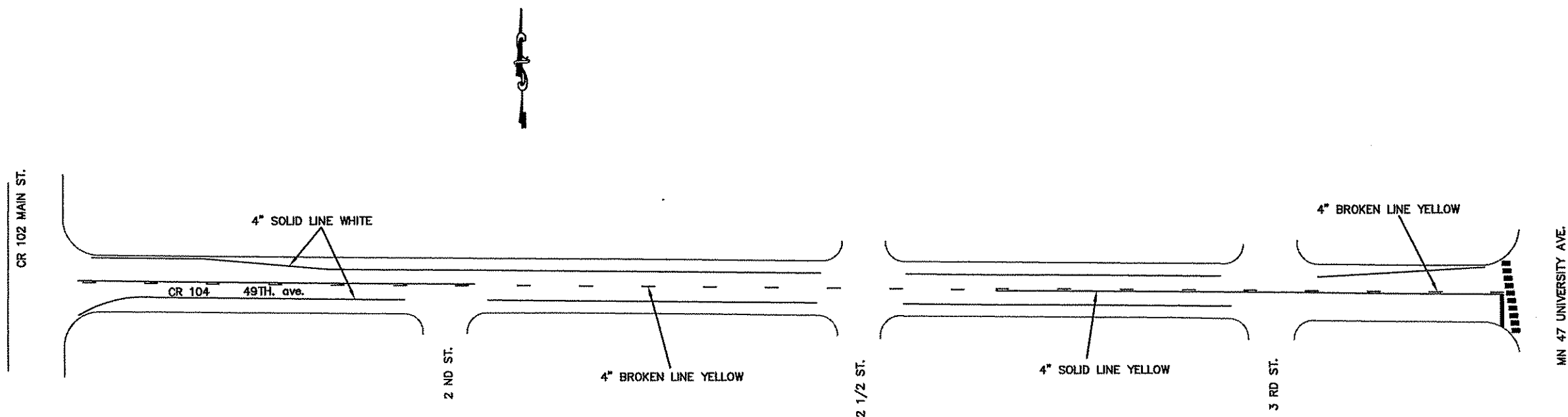


ANOKA COUNTY
HIGHWAY DEPT.

STATE PROJECT NO. _____
STATE AID PROJECT NO. _____
CITY PROJECT NO. _____
COUNTY PROJECT NO. 03-07-104

TRAFFIC SIGNAL SYSTEMS
DETAILS & STANDARD PLATES
Sheet 6 of 7 Sheets

NO	DATE	BY	CKD	APPR	REVISION



729' 4" SOLID LINE YELLOW – EPOXY
 1770' 4" SOLID LINE WHITE – EPOXY
 240' 4" BROKEN LINE YELLOW – EPOXY

C.R. 104 49th. AVE.
 FROM C.R. 102 MAIN ST. to T.H. 47

NO	DATE	BY	CKD	APPR	REVISION

I HEREBY CERTIFY THAT THIS PLAN WAS PREPARED BY ME OR UNDER MY DIRECT SUPERVISION AND THAT I AM A DULY LICENSED PROFESSIONAL ENGINEER UNDER THE LAWS OF THE STATE OF MINNESOTA.
 PRINT NAME: MARK DALY
 SIGNATURE: *MD*
 DATE: 4/17/2003 LICENSE NO. 21763

DRAWN BY: ST DATE: 04/24/03
 DESIGN BY: DATE: _____
 CHECKED BY: DATE: _____



ANOKA COUNTY
 HIGHWAY DEPT.

STATE PROJECT NO. _____
 STATE AID PROJECT NO. _____
 STATE AID PROJECT NO. _____
 COUNTY PROJECT NO. 03-07-104

PERMANENT STRIPING
 Sheet 7 of 7 Sheets