

STATE OF MINNESOTA
DEPARTMENT OF HIGHWAYS

CONSTRUCTION PLAN FOR CONC. CURB & GUTTER, CONC.
SIDEWALK, BIT. WEAR & STORM SEWER

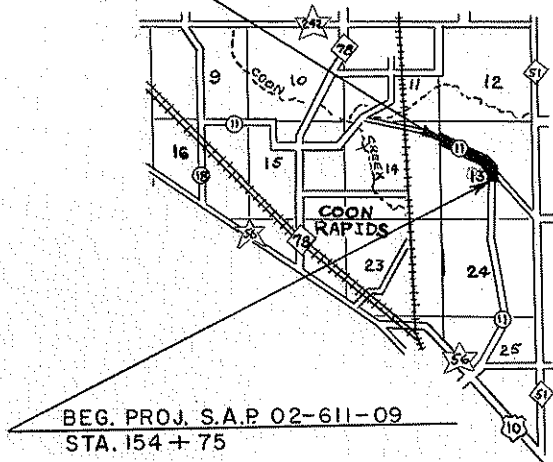
COUNTY STATE AID HIGHWAY NO. 11

From INTER. FOLEY BLVD. & NORTH DALE BLVD.
To INTER. QUINCE ST. & NORTHDALE BLVD. IN COON RAPIDS.
From STA. 154+75
To STA. 191+50

STATE AID PROJECT NO. 02-611-09

GROSS LENGTH 3675 FEET .696 MILES
BRIDGES LENGTH 0 FEET 0 MILES
EXCEPTIONS LENGTH 0 FEET 0 MILES
NET LENGTH 3675 FEET .696 MILES

END PROJ. S.A.P. 02-611-09
STA. 191+50



BEG. PROJ. S.A.P. 02-611-09
STA. 154+75

S.F. 50
PROJ. TRAFFIC 4529 (A.D.T.)

DESIGN SPEED
50 M.P.H.
LOCALLY ZONED

SPECIFICATIONS

THE "SPECIFICATIONS FOR HIGHWAY CONSTRUCTION"
DATED JANUARY 1, 1964

SHALL GOVERN.

ALL APPLICABLE FEDERAL, STATE AND LOCAL LAWS AND ORDINANCES WILL BE COMPLIED WITH
IN THE CONSTRUCTION OF THIS PROJECT.
I HEREBY CERTIFY THAT THIS PLAN WAS PREPARED BY ME OR UNDER MY DIRECT SUPERVISION
AND THAT I AM A DULY REGISTERED PROFESSIONAL ENGINEER UNDER THE LAWS OF THE STATE
OF MINNESOTA.

Erling J. Lundheim COUNTY ENGINEER DATE 1-12-66

Araka COUNTY REG. NO. 2551

RECOMMENDED FOR APPROVAL Edgar C. Pearson 1-12-66
DISTRICT ENGINEER

RECOMMENDED FOR APPROVAL C.E. Weichselbaum 1-13, 1966

APPROVED 1-20 1966 J.M. Edward
STATE AID ENGINEER

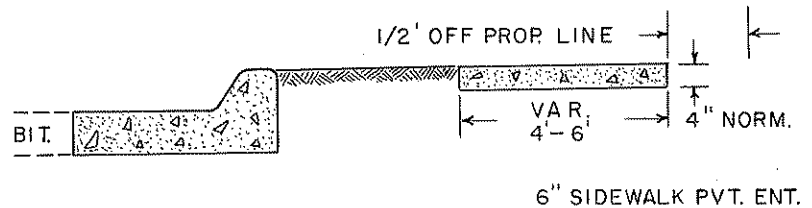
STATE PROJECT _____
STATE AID PROJECT 02-611-09

	ITEM No	ITEM	UNIT	PARTICIPATION	NON PARTICIPATION	TOTAL EST. QUANT.
	2105.501	CLASS "A" EXC.	CU. YD.	194		194
	2105.510	TOP SOIL COVER	CU. YD.(VM)	246	11	257
	2341.504	BIT. MATERIAL FOR MIX	TON	117	17	134
	2341.509	WEARING COURSE MIXTURE + FILLER	TON	1762	248	2010
	2341.512	LEVELING COURSE MIXTURE	TON	411	62	473
	2341.518	BIT. MIXTURE FOR (MISC. DRIVEWAYS)	TON	16		16
	2503.512	F&I. 15" R.C.P SEWER CLASS II	LIN. FT.	198		198
	2503.512	F&I. 18" R.C.P SEWER CLASS II	LIN. FT.	106	100	206
	2506.507	CONST. CATCH BASINS DESIGN-C	LIN. FT.	24	3	27
①	2506.509	CONST. CATCH BASINS (DRY WELLS)	STRUCT.	5	1	6
	2506.516	F&I. CASTING ASSEM. 4126-C	ASSEM.	6	1	7
	2506.516	F&I. CASTING ASSEM. NEENAH R-3246 TYPE 3-C	ASSEM.	1		1
	2506.522	ADJ. FRAME & RING CASTINGS	ASSEM.	12	1	13
	504.685	ADJ. WATER GATE HOUSING	ASSEM.	9		9
	2521.501	CONC. WALK 4" THICK	SQ. FT.		13,872	13,872
	2521.501	CONC. WALK 6" THICK	SQ. FT.		1996	1996
②	2531.501	CONC. CURB & GUTTER DESIGN B 618	LIN.FT.	6586	590	7176
	2531.502	CONC. CURB SPECIAL	LIN.FT.	530		530
③	2531.507	CONC. DRIVEWAY PAVEMENT 6" THICK	SQ. YD.	1584		1584
	2531.507	CONC. DRIVEWAY PAVEMENT 8" THICK	SQ. YD.	195		195
	2576.501	SODDING	SQ. YD.	2945	131	3076
	2515.541	F&I. CONC. APRON FOR 18" R.C.P.	APRON	2		2

- ① SEE SPECIAL DESIGN SHEET #5
- ② SEE SPECIAL DESIGN SHEET #3
- ③ TO BE USED IN ENT.S OF SPECIAL CURB (SHOPPING CENTER)

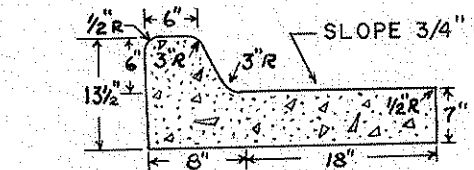
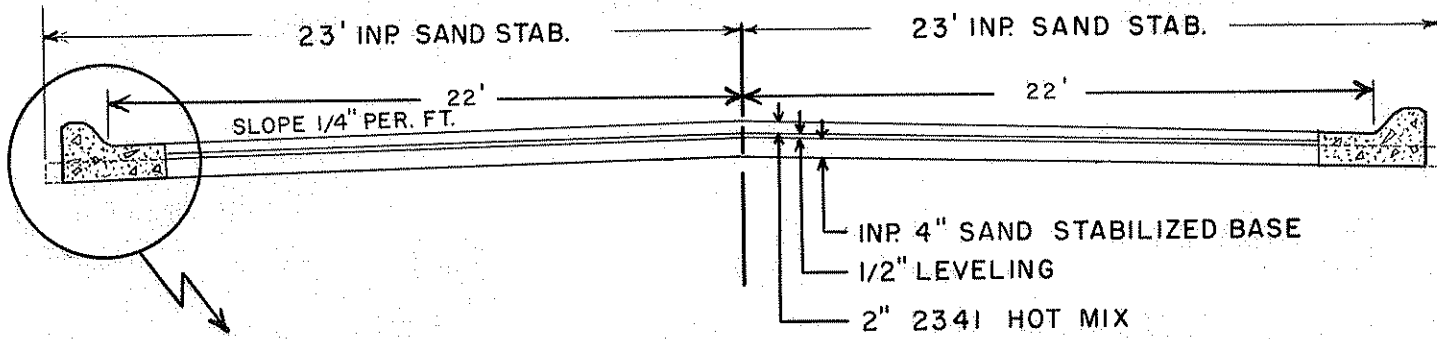
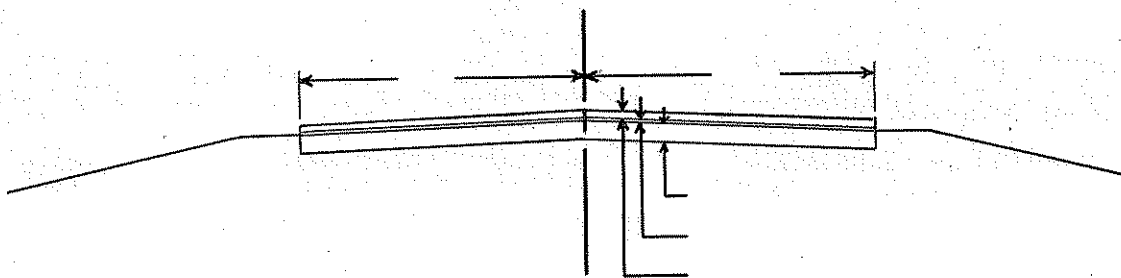
CONC. SIDEWALK LOCATION

6' WIDE STA. 161+05 TO 167+28 RT.
 6' WIDE STA. 167+39 TO 180+18 RT.
 4' WIDE STA. 180+27 TO 187+08 LT.
 4' WIDE STA. 187+25 TO 190+78 LT.



STANDARD DETAIL PLATES	
PLATE No	DESCRIPTION
4002-C	MANHOLE OR CATCH BASIN
4126-C	CATCH BASIN FRAME CASTING. # 801 # 810 # 821-B

TYPICAL SECTION



STA. 155+00 TO 191+00

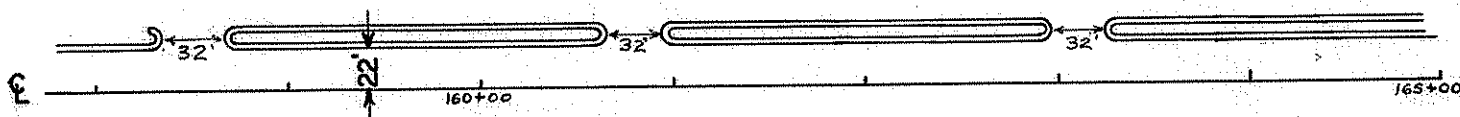
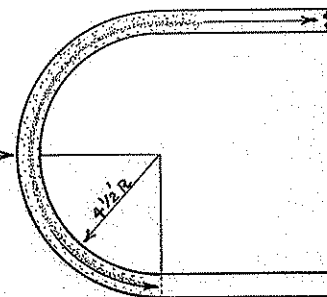
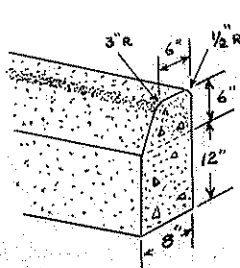
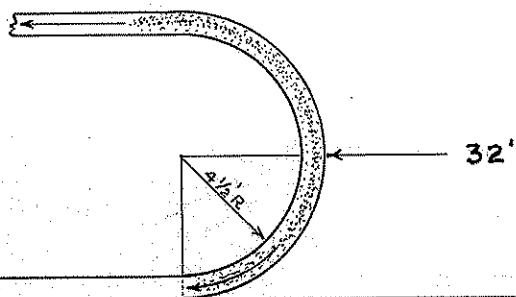
DESIGN B618

NOTE: 15' CURB RAD. ON STREET ENT.
UNLESS OTHERWISE NOTED ON PLAN.

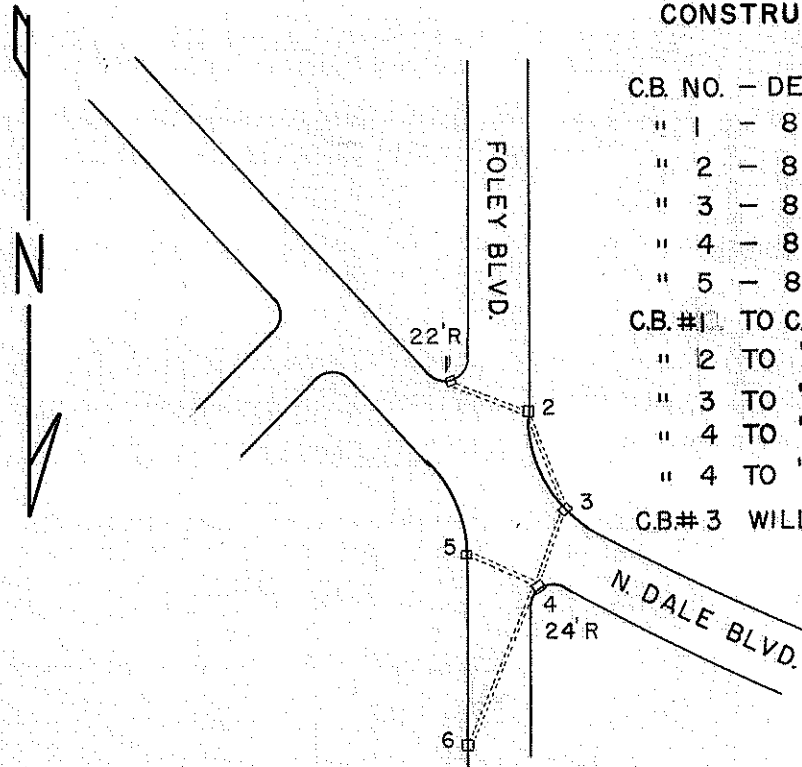
SPECIAL CURB SHOPPING CENTER

NOTE:

SPECIAL CURB FOR RAD. TO SHOPPING CENTER ENT'S. & BACK OF ISLANDS ONLY



DRY WELL & CATCH BASIN LOCATIONS



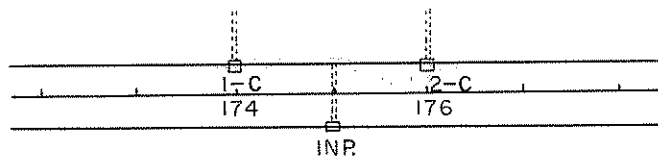
CONSTRUCT

- C.B. NO. - DEP
- " 1 - 8' D.W. & 3.0' BLOCK CONE
 - " 2 - 8' D.W. & 3.5' BLOCK CONE
 - " 3 - 8' D.W. & 4.0' BLOCK CONE
 - " 4 - 8' D.W. & 4.5' BLOCK CONE
 - " 5 - 8' D.W. & 3.0' BLOCK CONE
- C.B.#1 TO C.B.#2 F&I. 15" X 60' RCP
- " 2 TO " 3 F&I. 15" X 84' RCP
 - " 3 TO " 4 F&I. 18" X 70' RCP
 - " 4 TO " 5 F&I. 15" X 54' RCP
 - " 4 TO " 6 F&I. 18" X 100' RCP
- CB#3 WILL HAVE NEENAH CASTING.

NOTE:

INTERSECTION NORTHDAL BLVD. & FOLEY BLVD.
 BLOCK CATCH BASINS OVER DRY WELLS WILL NOT
 REQUIRE CONC. BASE'S.
 BLOCK CATCH BASINS AT STA. 174+00 & 176+00
 WILL REQUIRE CONC. BASE'S.

SCHOOL AREA



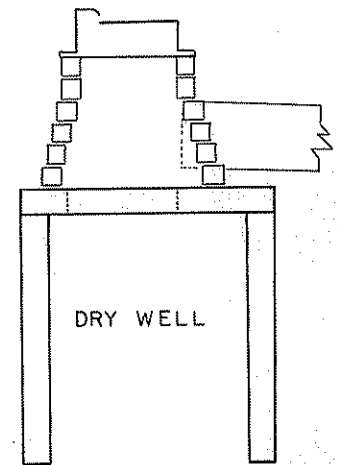
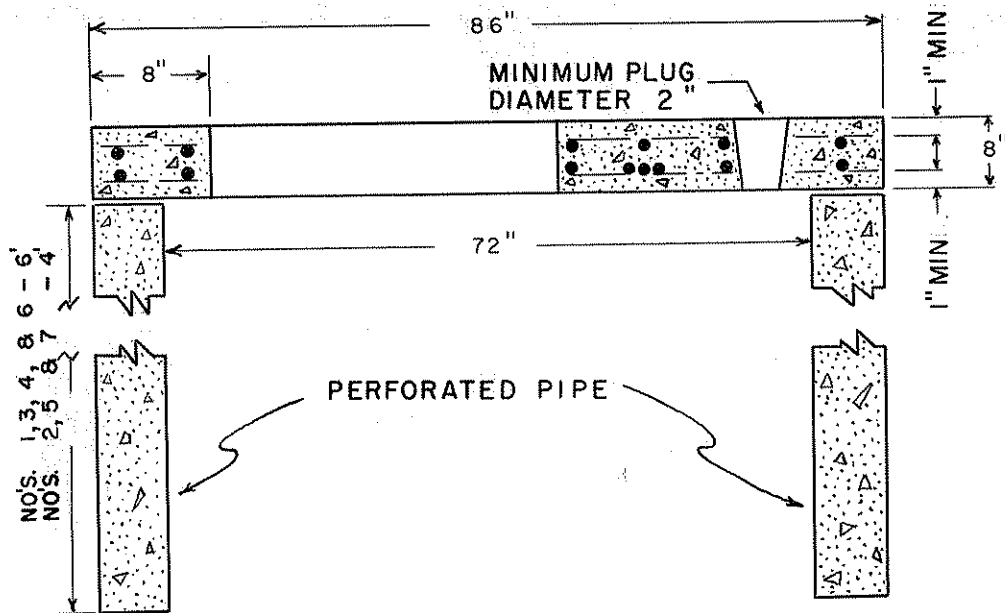
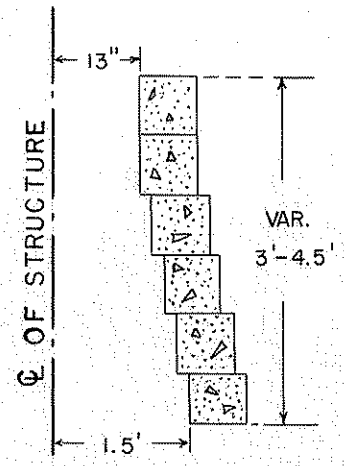
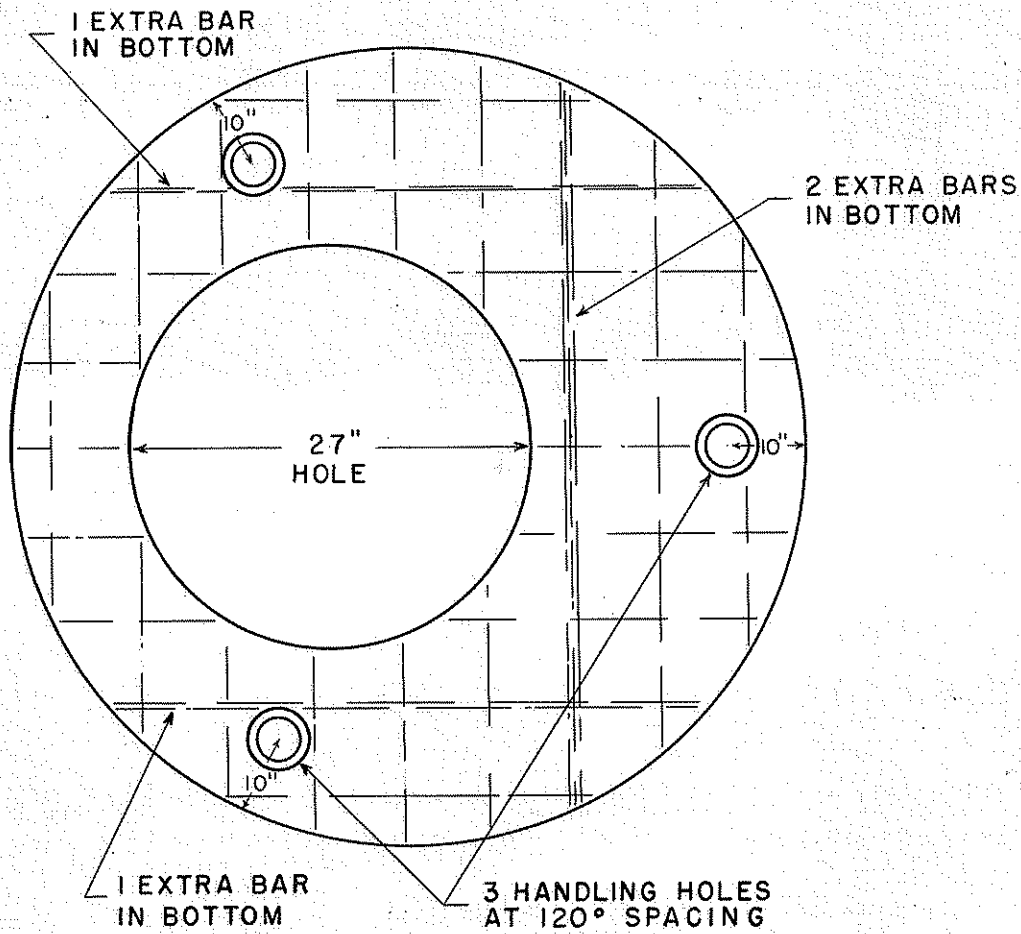
STA. 174+00 & 176+00 LT.

CONSTRUCT

C.B. N.O. - DEP

- " 1-C - 3' - 100' EAST INP. STRUC. & SO. SIDE
- " 2-C - 3' - 100' WEST INP. STRUC. & SO. SIDE
- " 1-C-F & I. 15" X 18" R. C. P
- " 2-C-F & I. 15" X 18" R. C. P

DRY WELL & CATCH BASIN CONSTRUCTION



PVT. ENT. CONC. CURB DESIGN

SIDE VIEW

