

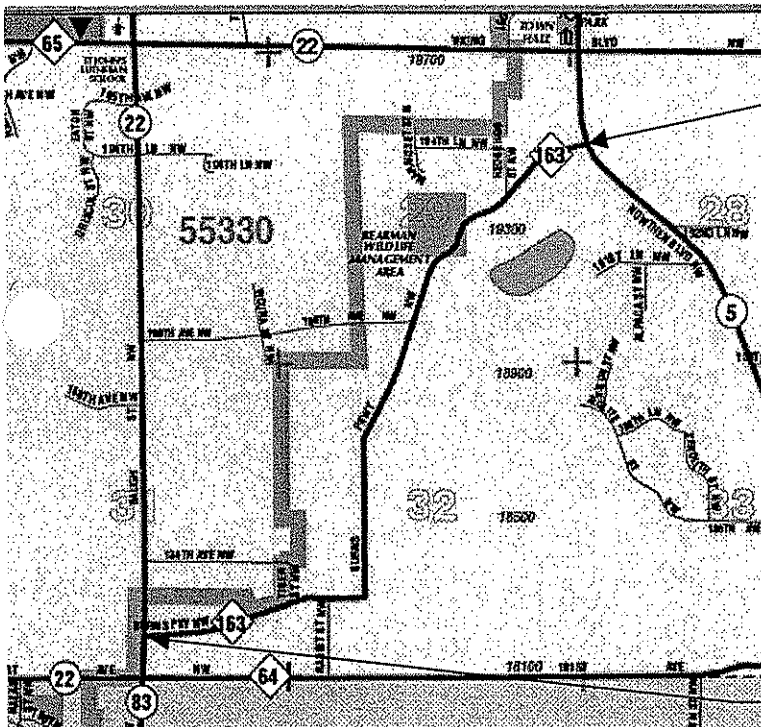
# ANOKA COUNTY HIGHWAY DEPARTMENT

CONSTRUCTION PLAN FOR:

BIT. RECLAIM, BIT. OVERLAY

CR NO: 163  
FROM CSAH 22  
TO CSAH 5  
FROM  
TO

COUNTY PROJECT NO: 07-21-163  
GROSS LENGTH 13300 FT 2.5 MI  
BRIDGES LENGTH 0 FT 0.00 MI  
EXCEPTION LENGTH 0 FT 0.00 MI  
NET LENGTH 13300 FT 2.5 MI



END PROJECT C.P. 07-21-163 STATION 143+00

BEGIN PROJECT C.P. 07-21-163 STATION 10+00

I HEREBY CERTIFY THAT THIS PLAN WAS PREPARED BY ME OR UNDER MY DIRECT SUPERVISION AND THAT I AM A DULY LICENSED PROFESSIONAL ENGINEER UNDER THE LAWS OF THE STATE OF MINNESOTA

*Andrew J. Witter*  
ANDREW J. WITTER, P.E.

LIC. NO. 42757 DATE 5/11/07

### GOVERNING SPECIFICATIONS:

THE 2005 EDITION OF THE MINNESOTA DEPARTMENT OF TRANSPORTATION "STANDARD SPECIFICATIONS FOR CONSTRUCTION" SHALL GOVERN. ALL TRAFFIC CONTROL DEVICES SHALL CONFORM TO THE MMUTCD, INCLUDING "FIELD MANUAL FOR TEMPORARY TRAFFIC CONTROL ZONE LAYOUTS - JANUARY 2007."

APPROVED 5/15, 2007

*Robert J. ...*  
ANOKA COUNTY ENGINEER

**STATEMENT OF ESTIMATED QUANTITIES**

ITEM NO.	ITEM	NOTE NO.	UNIT	TOTAL EST. QUANT.
2021.501	MOBILIZATION		LUMP SUM	1
2104.513	SAWCUT BITUMINOUS FULL DEPTH		LIN FT	100
2105.525	TOPSOIL BORROW (LV)		CU YD	246
2123.503	MOTOR GRADER		HOUR	25
2123.521	PNEUMATIC-TIRED ROLLER		HOUR	25
2130.501	WATER		M-GAL	176
2211.501	AGGREGATE BASE CLASS 5		TON	170
2232.501	MILL BITUMINOUS SURFACE (2" JOINTS)		SQ YD	84
2331.604	BITUMINOUS PAVEMENT RECLAMATION		SQ YD	32346
2357.502	BITUMINOUS MATERIAL FOR TACK COAT		GALLON	4
2360.609	TYPE LV3 WEAR MIXTURE ( MAINLINE / RTL / SHLDR ) ( LVWE35030 B )		TON	4782
2540.602	INSTALL MAIL BOX SUPPORT		EACH	40
2563.601	TRAFFIC CONTROL		LUMP SUM	1
2564.603	4" SOLID LINE WHITE - EPOXY		LIN FT	26450
2564.603	4" BROKEN LINE YELLOW-EPOXY		LIN FT	2270
2564.603	4" SOLID LINE YELLOW - EPOXY		LIN FT	8500
2564.603	4" DOUBLE SOLID LINE YELLOW - EPOXY		LIN FT	1950
2575.571	RAPID STABILIZATION METHOD 3		M-GAL	5.5

**BASIS OF PLANNED QUANTITIES**

2211.501	AGGREGATE BASE CLASS 5	CU YDS * 1.8 = TONS
2360.609	TYPE LV3 WEAR MIXTURE ( LVWE35030 B )	115 LBS/SQYD/IN THICKNESS
2575.571	RAPID STABILIZATION METHOD 3	6000 GALLONS PER ACRE

CERTIFIED BY

  
ANDREW J. WITTER, P.E.

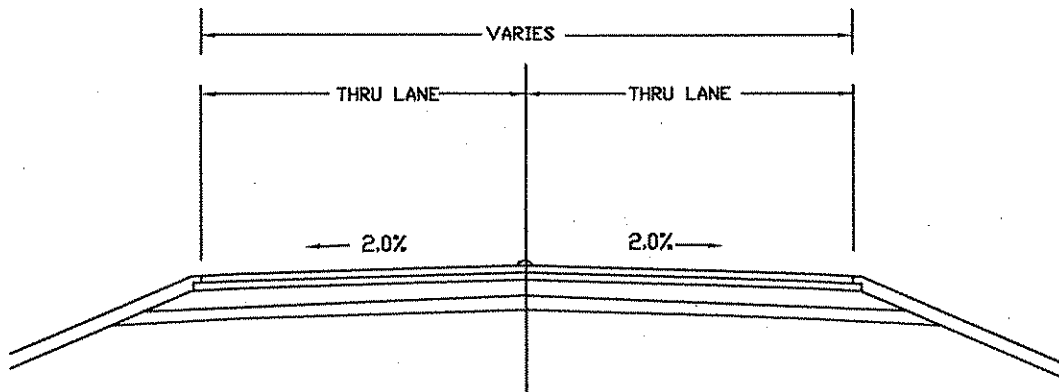
LIC. NO. 42757 DATE 5/11/07

PROJ. 07-21-163

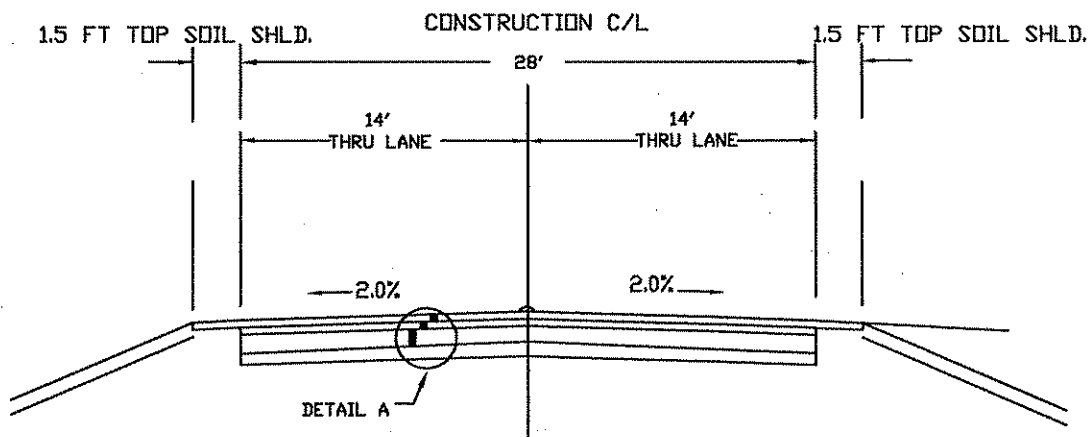
SHEET NO. 2 OF 5 SHEETS

# TYPICAL SECTIONS

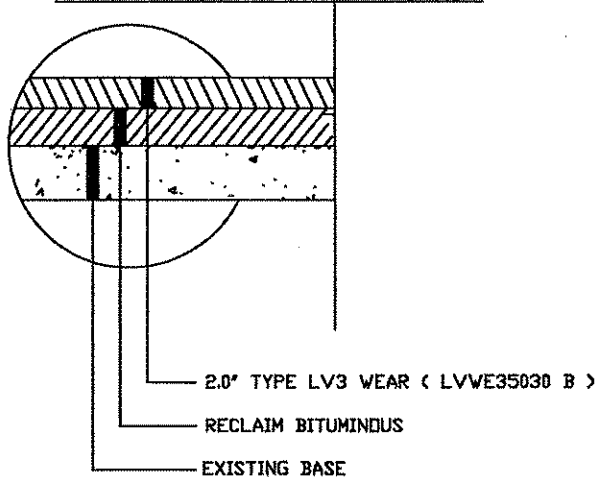
## EXISTING SECTION TYPICAL CONSTRUCTION C/L



## STANDARD SECTION PROPOSED



### DETAIL A-PROPOSED MAINLINE



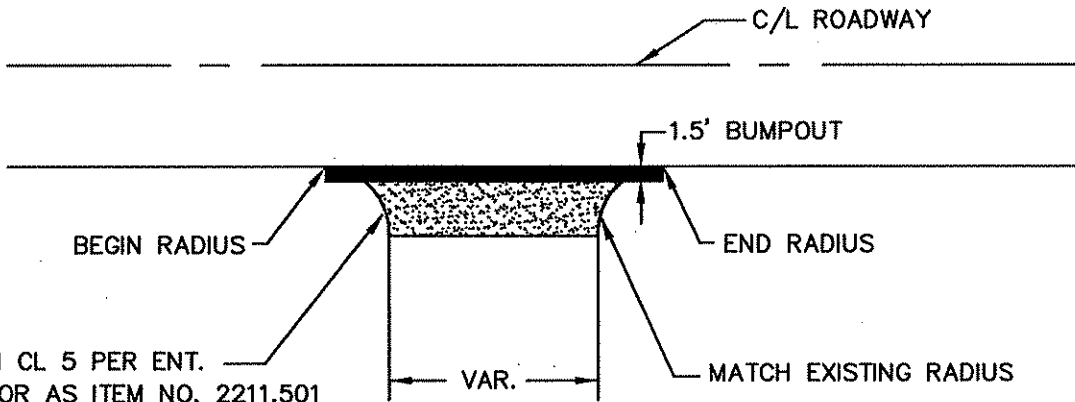
NOTE: NOT TO SCALE

CERTIFIED BY Andrew J. Witter  
ANDREW J. WITTER, P.E.  
C.P. 07-21-163

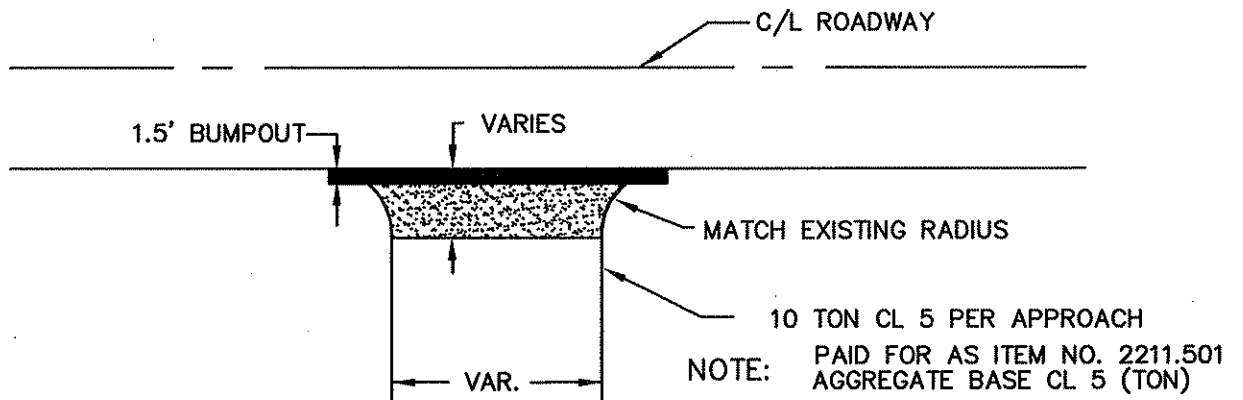
LIC. NO. 42757 DATE 8/10/07  
SHEET NO. 3 OF 5 SHEETS

# TYPICAL SECTIONS

## FIELD AND UNPAVED ENTRANCES



## UNPAVED STREET APPROACHES



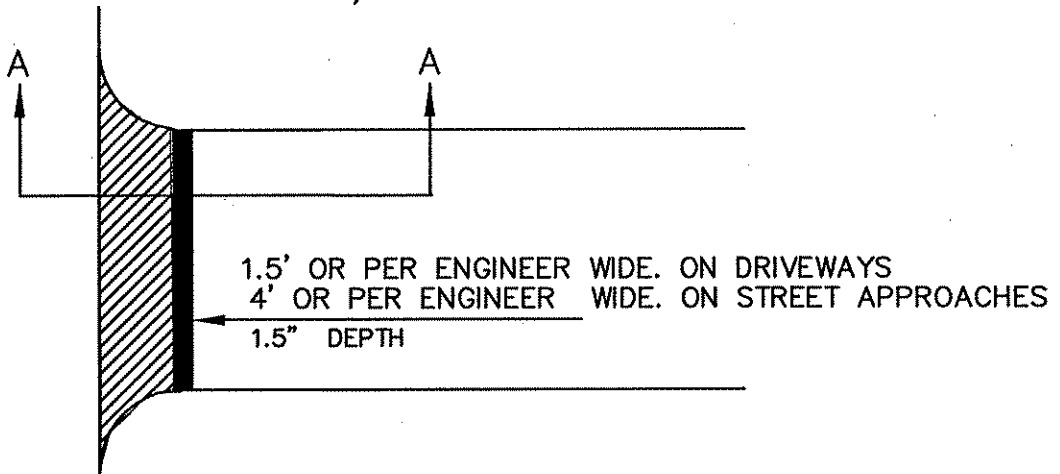
NOTE: NOT TO SCALE

CERTIFIED BY Andrew J. Witter  
ANDREW J. WITTER, P.E.  
C.P. 07-21-163

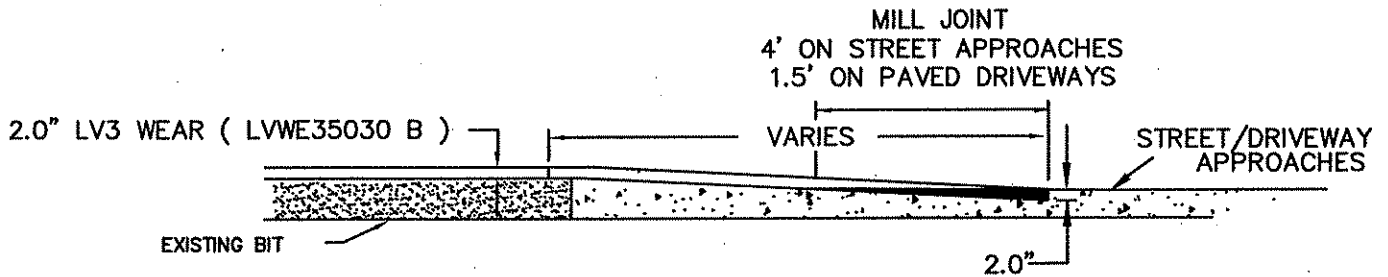
LIC. NO. 42757 DATE 2/16/07  
SHEET NO. 4 OF 5 SHEETS

# TYPICAL SECTIONS

## JOINT DETAILS DRIVEWAYS/STREET APPROACHES



## JOINT DETAILS DRIVEWAYS/STREET APPROACHES BEGINNING AND END OF PROJECT



NOTE: NOT TO SCALE

CERTIFIED BY

*Andrew J. Witter*  
ANDREW J. WITTER, P.E.

C.P. 07-21-163

LIC. NO. 42757 DATE *8/11/07*

SHEET NO. 5 OF 5 SHEETS

# ANOKA COUNTY HIGHWAY DEPARTMENT

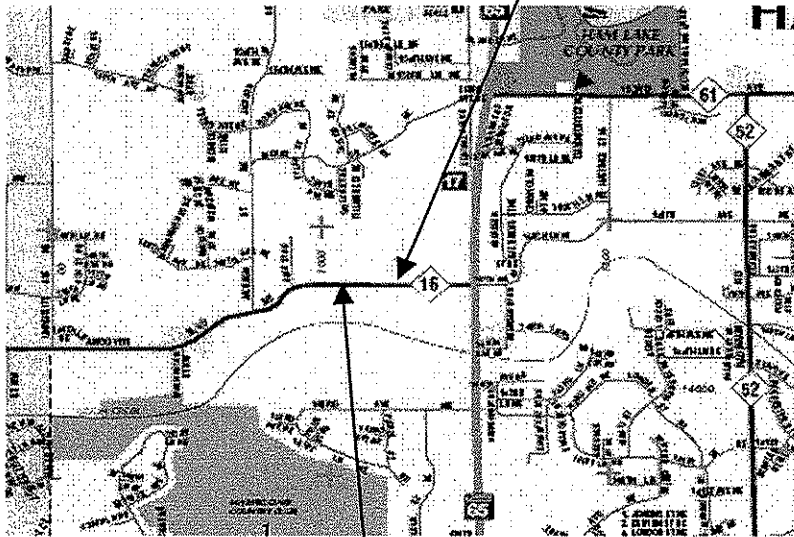
CONSTRUCTION PLAN FOR:

STORM SEWER CONSTRUCTION

CSAH NO.: 16  
FROM 1/2 MILE WEST OF TH65  
TO 1/4 MILE WEST OF TH 65  
FROM  
TO

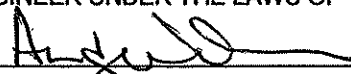
PROJECT NO: 07-22-16  
GROSS LENGTH 1050 FT 0.2 MI  
BRIDGES LENGTH 0 FT 0.00 MI  
EXCEPTION LENGTH 0 FT 0.00 MI  
NET LENGTH 1050 FT 0.2 MI

END PROJECT C.P. 07-22-16 STATION 25+75



BEGIN PROJECT C.P. 07-22-16 STATION 15+25

I HEREBY CERTIFY THAT THIS PLAN WAS PREPARED BY ME OR UNDER MY DIRECT SUPERVISION AND THAT I AM A DULY LICENSED PROFESSIONAL ENGINEER UNDER THE LAWS OF THE STATE OF MINNESOTA

  
ANDREW J. WITTER, P.E.

LIC. NO. 42757 DATE 5/11/07

### GOVERNING SPECIFICATIONS:

THE 2005 EDITION OF THE MINNESOTA DEPARTMENT OF TRANSPORTATION "STANDARD SPECIFICATIONS FOR CONSTRUCTION" SHALL GOVERN. ALL TRAFFIC CONTROL DEVICES SHALL CONFORM TO THE MMUTCD, INCLUDING "FIELD MANUAL FOR TEMPORARY TRAFFIC CONTROL ZONE LAYOUTS - JANUARY 2007."

APPROVED 5/15, 2007

  
ANOKA COUNTY ENGINEER