

ANOKA COUNTY HIGHWAY DEPARTMENT

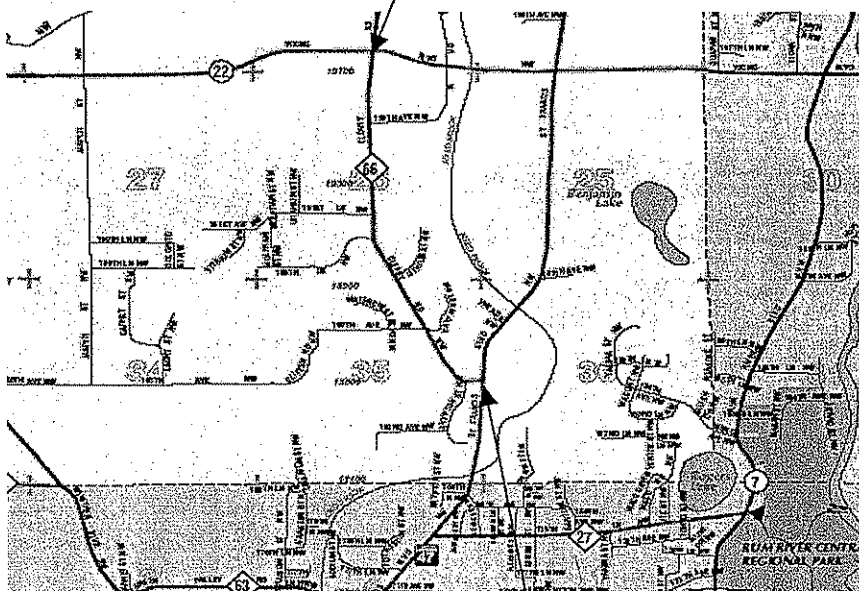
CONSTRUCTION PLAN FOR:

BIT.RECLAIM, FLYASH, BIT.
OVERLAY

C.R NO: 66
FROM MN 47
TO CSAH 22
FROM
TO

COUNTY PROJECT NO: 05-11-66
GROSS LENGTH 9533 FT 1.8 MI
BRIDGES LENGTH 0 FT 0 MI
EXCEPTION LENGTH 0 FT 0 MI
NET LENGTH 9533 FT 1.8 MI

--END PROJECT C.P. 05-11-66 STATION 10+00



--BEGIN PROJECT C.P. 05-11-66 STATION 10+00

I HEREBY CERTIFY THAT THIS PLAN WAS PREPARED BY ME OR UNDER MY DIRECT SUPERVISION AND THAT I AM A DULY LICENSED PROFESSIONAL ENGINEER UNDER THE LAWS OF THE STATE OF MINNESOTA

Andrew J. Witter
ANDREW J. WITTER, P.E.

LIC. NO. 42757 DATE 4/14/05

GOVERNING SPECIFICATIONS:

THE 2000 EDITION OF THE MINNESOTA DEPARTMENT OF TRANSPORTATION "STANDARD SPECIFICATIONS FOR CONSTRUCTION" SHALL GOVERN. ALL TRAFFIC CONTROL DEVICES SHALL CONFORM TO THE MMUTCD, INCLUDING "FIELD MANUAL FOR TEMPORARY TRAFFIC CONTROL ZONE LAYOUTS - JANUARY 2004."

APPROVED 4/15, 20 05

[Signature]
ANOKA COUNTY ENGINEER

STATEMENT OF ESTIMATED QUANTITIES

ITEM NO.	ITEM	NOTE NO.	UNIT	TOTAL EST. QUANT.
2021.501	MOBILIZATION		LUMP SUM	1
2123.503	MOTOR GRADER		HOUR	18
2123.521	PNEUMATIC-TIRED ROLLER		HOUR	18
2130.501	WATER		M-GAL	126
2211.501	AGGREGATE BASE CLASS-5		TON	129
2221.609	AGGREGATE SHOULDERING CLASS-7		TON	763
2232.501	MILL BITUMINOUS SURFACE (2")		SQ YD	213
2331.604	BITUMINOUS PAVEMENT RECLAMATION		SQ YD	26481
2331.604	MIX RECYCLED BITUMINOUS AND FLYASH		SQ YD	26481
2331.609	TYPE C FLYASH		TON	1258
2357.502	BITUMINOUS MATERIAL FOR TACK COAT		GALLON	2648
2360.609	TYPE LV3 WEAR MIXTURE (LVWE35030 B)		TON	2112
2360.609	TYPE LV3 NON-WEAR MIXTURE (LVNW35030 B)		TON	2932
2360.609	TYPE LV3 WEARING COURSE MIXTURE ST. APP. (LVWE35030 B)		TON	29
2360.609	TYPE LV3 NON-WEAR MIXTURE ST. APP. (LVNW35030 B)		TON	39
2540.602	INSTALL MAIL BOX SUPPORT		EACH	24
2563.601	TRAFFIC CONTROL		LUMP SUM	1
2563.602	PORTABLE CHANGEABLE MESSAGE SIGN		UNIT DAY	10
2564.603	4" SOLID LINE WHITE - EPOXY		LIN FT	18366
2564.603	4" SOLID LINE YELLOW - EPOXY		LIN FT	1000
2564.603	4" DOUBLE SOLID LINE YELLOW - EPOXY		LIN FT	800
2564.603	4" BROKEN LINE YELLOW - EPOXY		LIN FT	9533
2580.501	REMOVABLE LANE TAPE		LIN FT	763

BASIS OF PLANNED QUANTITIES

2211.501	AGGREGATE BASE CLASS 5	CU YDS * 1.8 = TONS
2221.609	AGGREGATE SHOULDERING CLASS 7 B	CU YDS * 1.8 = TONS
2331.609	TYPE C FLYASH (12% BY WEIGHT INJECTED)	SQ FT * 8" / 27 * 1.8 * 12%
2357.502	BITUMINOUS MATERIAL FOR TACK COAT	.05 GAL / SQ YD
2360.609	TYPE LV3 WEAR MIXTURE (LVWE35030 B)	110 LBS/SQYD/IN THICKNESS
2360.609	TYPE LV3 NON-WEAR MIXTURE (LVNW35030 B)	110 LBS/SQYD/IN THICKNESS
2580.501	REMOVABLE LANE TAPE	4' AT 50' INTERVALS FOR SKIPS

STANDARD DETAIL PLATES

PLATE NO.	DESCRIPTION
80001	STANDARD BARRICADES

CERTIFIED BY
PROJ. 05-11-66

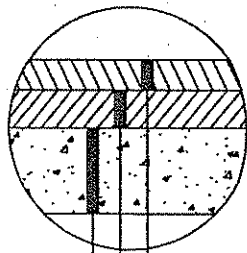
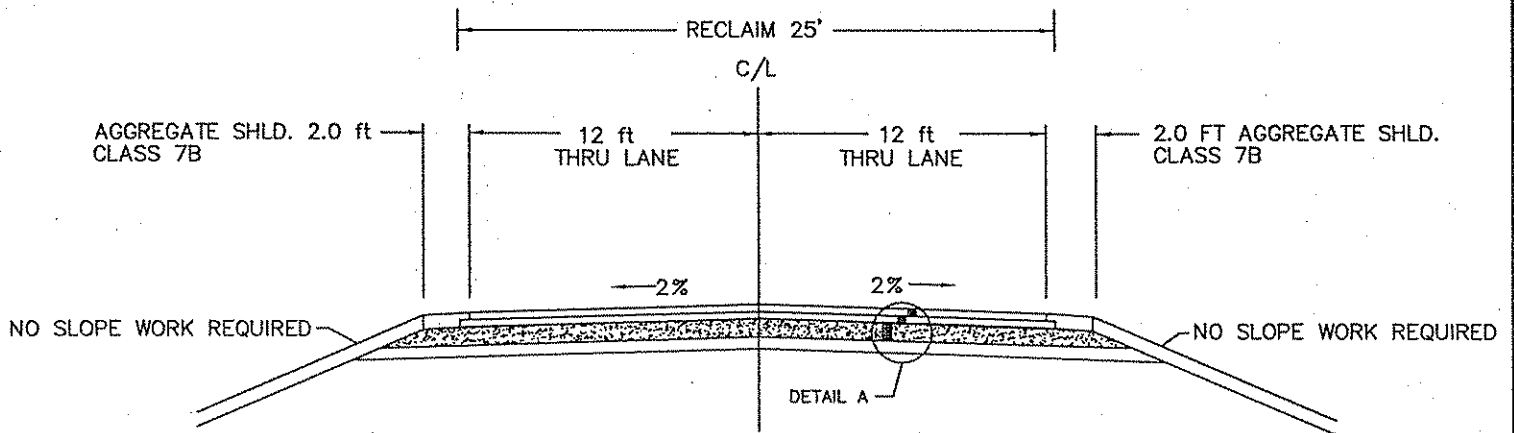
Andrew J. Witter

ANDREW J. WITTER, P.E.

LIC. NO. 42757 DATE 4/14/05
SHEET NO. 2 OF 6 SHEETS

TYPICAL SECTIONS

CR 66
PROPOSED SECTION



DETAIL A-PROPOSED MAINLINE

- 1.5" TYPE LV3 WEAR MIXTURE (LVWE35030 B)
- 2" TYPE LV3 NON-WEAR MIXTURE (LVNW35030 B)
- 8" RECLAIM INPLACE BITUMINOUS BASE MIX IN FLYASH

NOTE: NOT TO SCALE

CERTIFIED BY Andrew J. Witter

ANDREW J. WITTER, P.E.

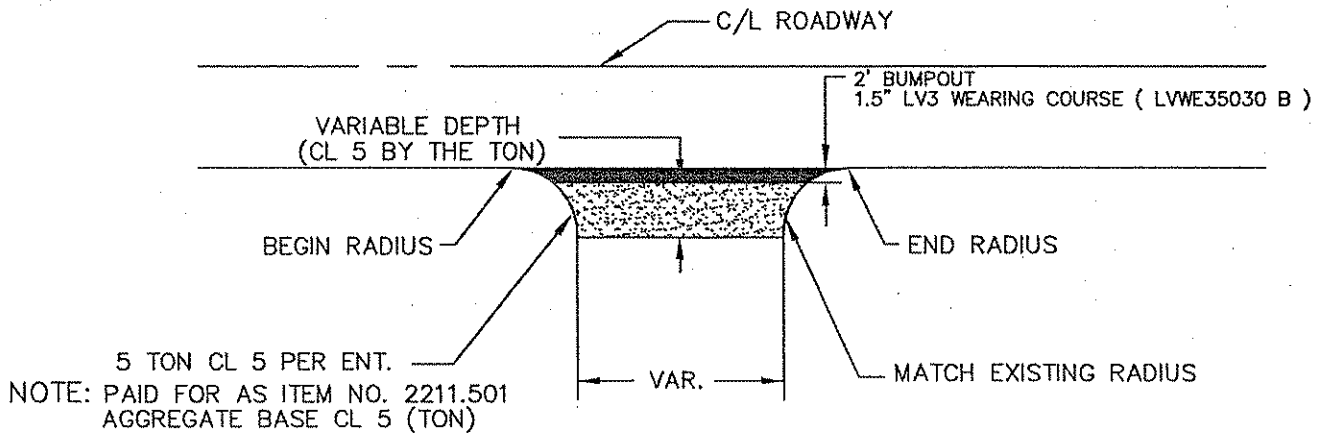
C.P. 05-11-66

LIC. NO. 42757 DATE 4/14/08

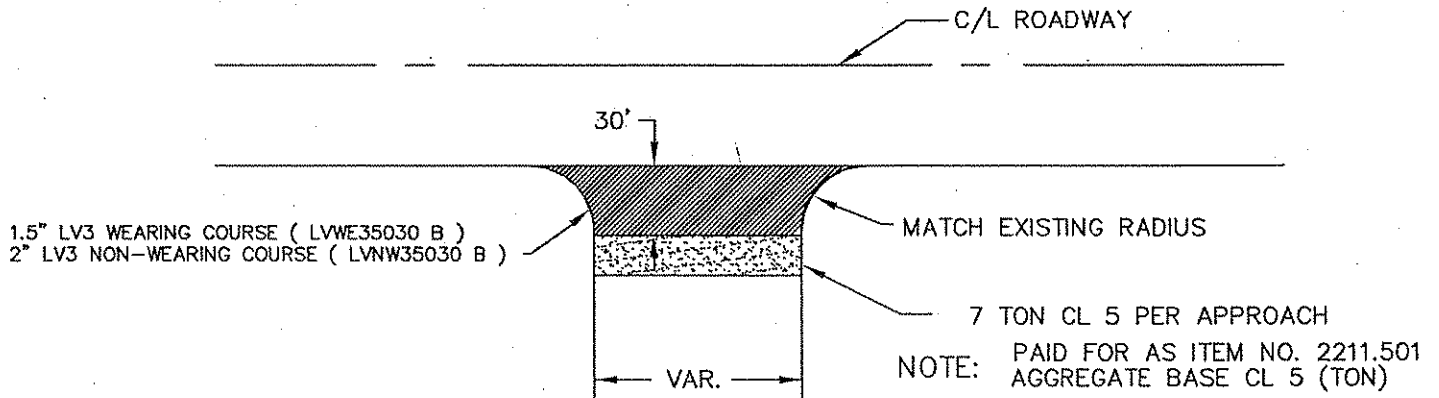
SHEET NO. 3 OF 6 SHEETS

TYPICAL SECTIONS

FIELD AND UNPAVED ENTRANCES



UNPAVED STREET APPROACHES



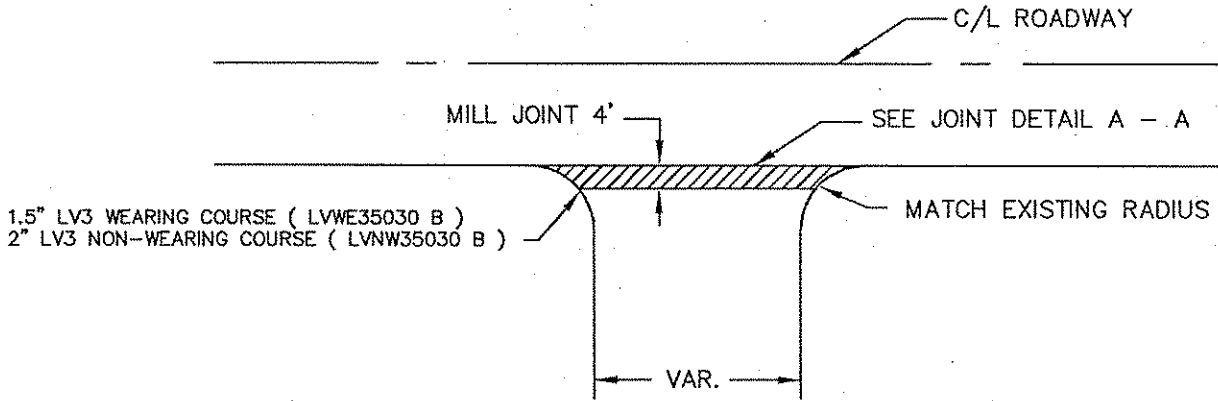
NOTE: NOT TO SCALE

CERTIFIED BY Andrew J. Witter
ANDREW J. WITTER, P.E.
C.P. 05-11-66

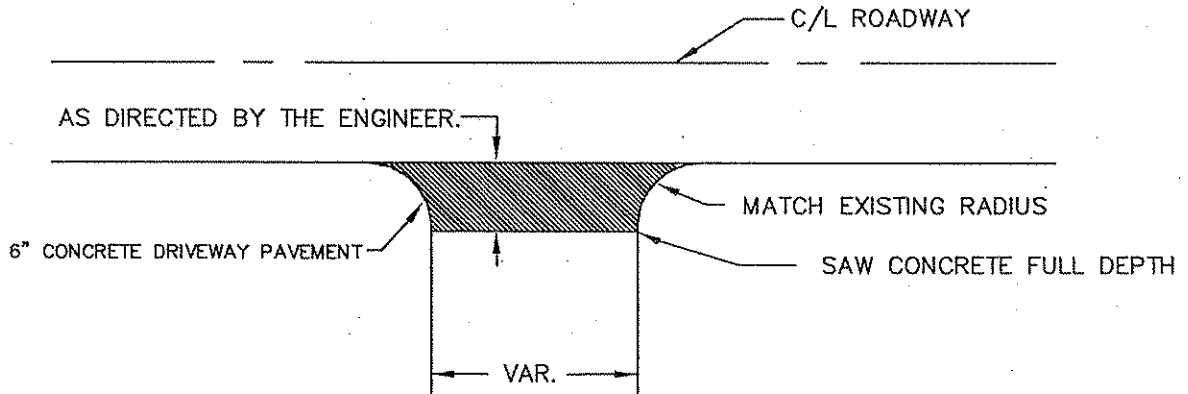
LIC. NO. 42757 DATE 4/14/05
SHEET NO. 4 OF 6 SHEETS

TYPICAL SECTIONS

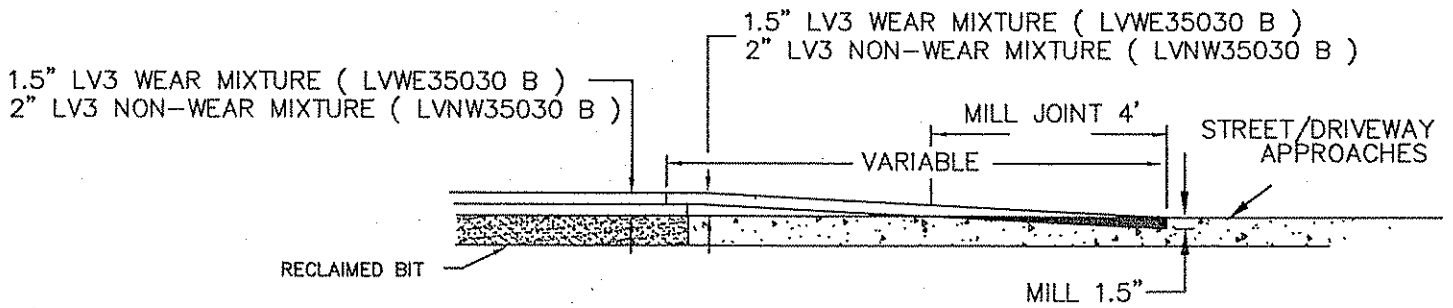
PAVED DRIVEWAYS/PAVED STREET APPROACHES



CONCRETE DRIVEWAYS



JOINT DETAIL A - A DRIVEWAYS/STREET APPROACHES



NOTE: NOT TO SCALE

CERTIFIED BY Andrew J. Witter
ANDREW J. WITTER, P.E.
C.P. 05-11-66

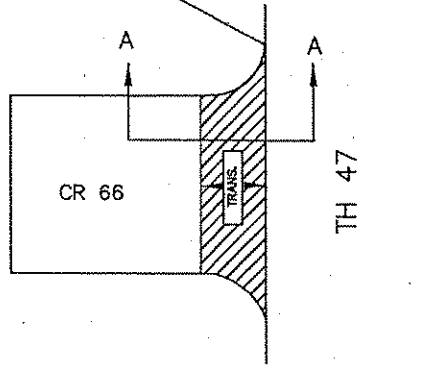
LIC. NO. 42757 DATE 4/14/05
SHEET NO. 5 OF 6 SHEETS

TYPICAL SECTIONS

JOINT TRANSITION DETAILS

(PLAN VIEW)

BEGIN C.P. 05-11-66
STN 10+00

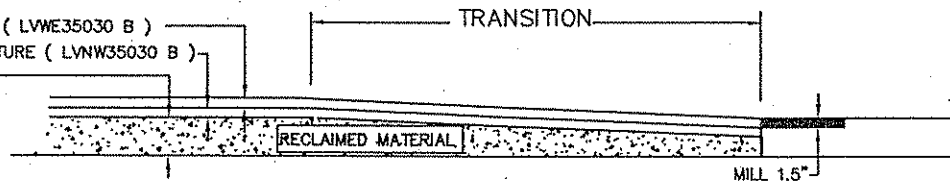


END C.P. 05-11-66
STN 105+33

TRANSITION DETAIL

TRANSITION LENGTH TO BE DETERMIND BY ENGINEER.

- 1.5" TYPE LV3 WEAR MIXTURE (LVWE35030 B)
- 2" TYPE LV3 NON-WEAR MIXTURE (LVNW35030 B)
- 8" RECLAIMED BITUMINOUS



* NOTE- TRANSITION TO BE PAID AS EQUIP. HRS
FOR MOTOR GRADER & ROLLER TO MOVE AND COMPACT
RECLAIMED MATERIAL FOR JOINT.

NOTE: NOT TO SCALE

CERTIFIED BY

Andrew J. Witter
ANDREW J. WITTER, P.E.

LIC. NO. 42757

DATE 4/14/05

C.P. 05-11-66

SHEET NO. 6 OF 6 SHEETS