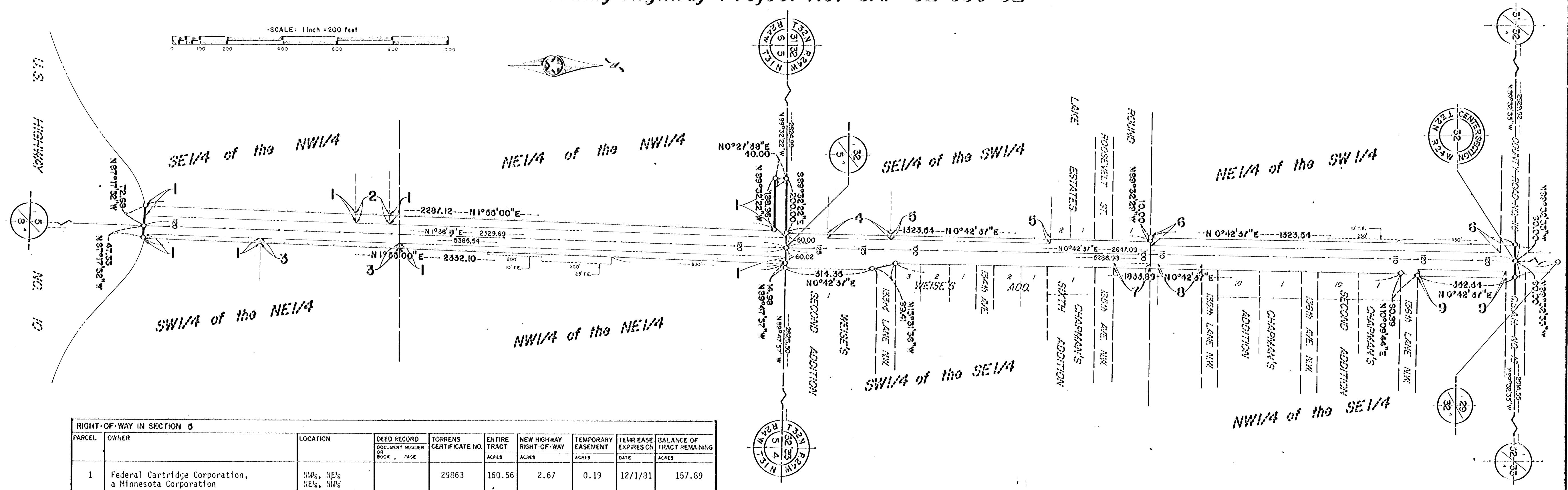
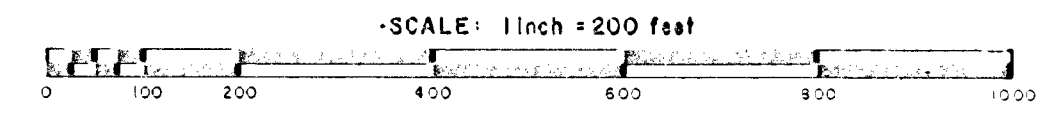


# ANOKA COUNTY HIGHWAY RIGHT-OF-WAY PLAT NO. 10

## County Highway Project No. SAP 02-609-02



**RIGHT-OF-WAY IN SECTION 5**

PARCEL	OWNER	LOCATION	DEED RECORD DOCUMENT NUMBER OR BOOK, PAGE	TORRENS CERTIFICATE NO.	ENTIRE TRACT ACRES	NEW HIGHWAY RIGHT-OF-WAY ACRES	TEMPORARY EASEMENT ACRES	TEMP EASE EXPIRES ON DATE	BALANCE OF TRACT REMAINING ACRES
1	Federal Cartridge Corporation, a Minnesota Corporation	NW¼, NE¼, NW¼, NE¼, SW¼, NE¼, SW¼, NE¼		29863	160.56	2.67	0.19	12/1/81	157.89
2	Ervin L. Dryden and Marilyn Dryden, husband and wife	Pt. SE¼, NW¼	330, 37		1.00	0.07			0.93
3	William Enmans and Mabel Enmans, husband and wife	Pt. SW¼, NE¼	252, 507		9.00	0.32			8.68

**RIGHT-OF-WAY IN SECTION 32**

PARCEL	OWNER	LOCATION	DEED RECORD DOCUMENT NUMBER OR BOOK, PAGE	TORRENS CERTIFICATE NO.	ENTIRE TRACT ACRES	NEW HIGHWAY RIGHT-OF-WAY ACRES	TEMPORARY EASEMENT ACRES	TEMP EASE EXPIRES ON DATE	BALANCE OF TRACT REMAINING ACRES
4	Mitchell J. Despen and Nila J. Despen, husband and wife	Pt. SE¼, SW¼	1126, 549		1.03	0.09			0.94
5	Stone Enterprizes, Inc., a Minnesota Corporation	Pt. SE¼, SW¼	469, 189		28.47	0.36			28.11
6	Hutton and Rowe, Inc., a Minnesota Corporation	Pt. NE¼, SW¼	447947		22.25	0.79	0.06	12/1/81	21.46
7	John Arthur Quick and Janice R. Quick, husband and wife	Pt. W¼, SE¼	980, 556		0.83	0.06			0.77
8	Eugene Brown	Pt. NW¼, SE¼	1020, 176		0.92	0.06			0.86
9	Grace Lutheran Church of Anoka, Minnesota	Pt. NW¼, SE¼	780, 449		3.60	0.20			3.40

**CONVENTIONAL SYMBOLS**

Section Line ————  
 Quarter Line ————  
 Quarter-quarter line ————  
 Property Line ————  
 R/W Boundary Line ————  
 Old Road R/W Line ————  
 R/W Parcel No. ?  
 Right-of-Way Monument ————  
 Temporary Easement ————

- PROCEDURAL STATEMENTS**
- The methods and equipment used in the control surveys for this plat and the checks made on monument location were accomplished with electronic distance measuring devices.
  - Certificates of location are on file in the Office of the County Surveyor for the section corner monuments shown on this plat.
  - For the details of the control survey and land survey, contact the County Surveyor's Office for survey of R/N Plat No. 10, Project No. SAP 02-609-02
  - Bearings shown are assumed.

THE BOARD OF COUNTY COMMISSIONERS OF ANOKA COUNTY, MINNESOTA, PURSUANT TO A BOARD RESOLUTION DATED, MAY 22, 1978, IS HEREBY DESIGNATING THE DEFINITE LOCATION OF THE RIGHT-OF-WAY OF COUNTY STATE AID HIGHWAY NO. 9, LYING IN THE CITY OF COON RAPIDS, THE CITY OF ANOKA AND THE CITY OF ANDOVER.

THAT PORTION OF SAID HIGHWAY LOCATED IN THE NORTH HALF OF SECTION 5, TOWNSHIP 31, RANGE 24, AND IN THE SOUTH HALF OF SECTION 32, TOWNSHIP 32, RANGE 24, ALL IN ANOKA COUNTY, MINNESOTA, AS SHOWN ON THIS PLAT EFFECTED BY THE COUNTY OF ANOKA, DEPARTMENT OF HIGHWAYS, IS HEREBY CERTIFIED TO BE THE OFFICIAL PLAT OF THE PORTION OF SAID COUNTY STATE AID HIGHWAY WITHIN SAID SECTIONS PURSUANT TO MINNESOTA STATUTES 160.085.

CERTIFIED BY: Paul K. Ruud, REGISTRATION NO. 6549  
 PAUL K. RUUD  
 COUNTY HIGHWAY ENGINEER

DATE: July 13, 1978

I HEREBY CERTIFY THAT THIS IS A TRUE AND CORRECT REPRESENTATION OF A SURVEY OF THE BOUNDARIES AS SHOWN, AND THAT SAID SURVEY WAS MADE UNDER MY DIRECT SUPERVISION, THAT ALL DISTANCES ARE CORRECTLY SHOWN IN FEET AND DECIMALS OF A FOOT, THAT THE MONUMENTS FOR THE GUIDANCE OF FUTURE SURVEYS WILL BE CORRECTLY PLACED IN THE GROUND AS SHOWN AFTER THE COMPLETION OF CONSTRUCTION, AND THAT THERE ARE NO WET LANDS OR PUBLIC HIGHWAYS TO BE DESIGNATED ON SAID PLAT OTHER THAN AS SHOWN THEREON.

Roland W. Anderson, REGISTRATION NO. 5715  
 ROLAND W. ANDERSON  
 ANOKA COUNTY SURVEYOR

DATE: July 12, 1978

CHIEF OF DIVISION OF LAND SURVEY  
 COUNTY OF ANOKA  
 STATE OF MINNESOTA