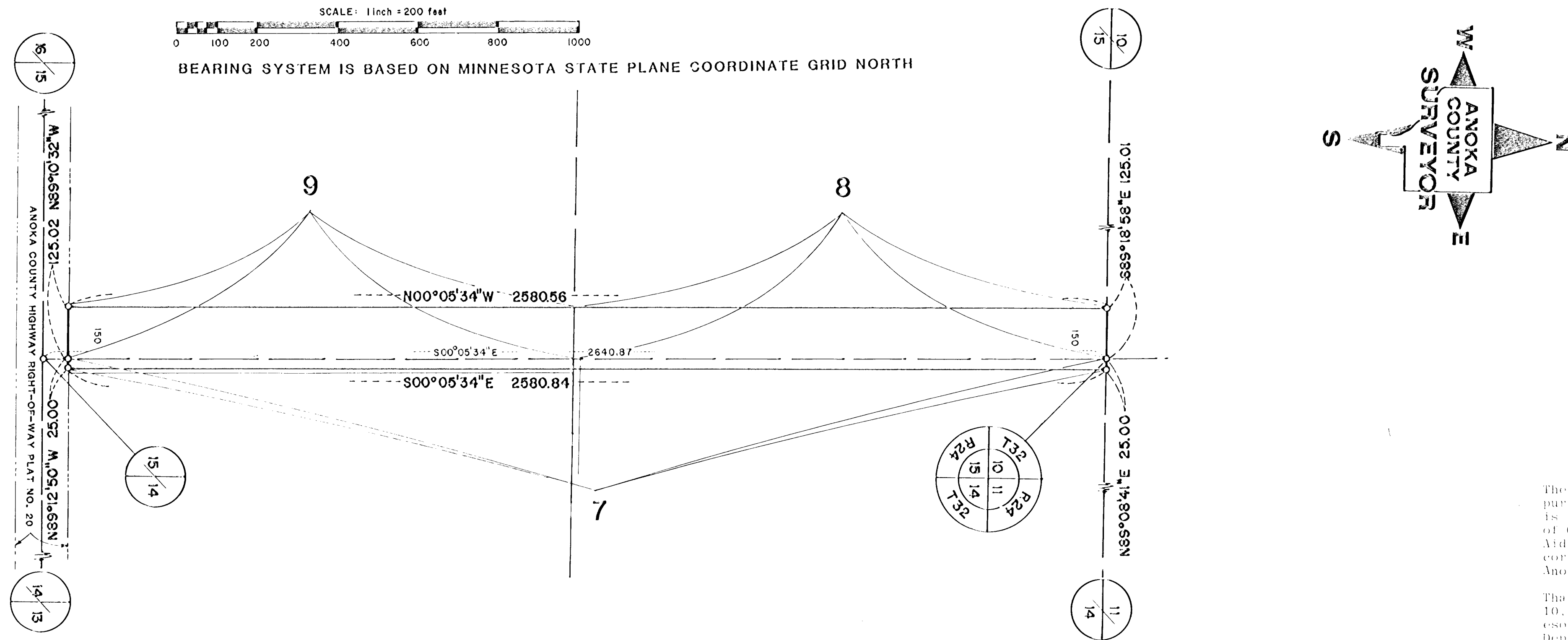


ANOKA COUNTY HIGHWAY RIGHT-OF-WAY PLAT NO. 27

County Highway Project No. CP-02-678-05



CONVENTIONAL SYMBOLS

- Section Line
- Quarter Line
- Quarter Quarter Line
- Property Line
- R/W Boundary Line
- Old Road R/W Line
- R/W Parcel Number 77
- Temporary Easement
- Right-of-Way Monument

The Board of County Commissioners for Anoka County, Minnesota, pursuant to Board Resolution Number 86-16, dated May 13, 1986, is hereby designating the definite location of the Right-of-way of County Road Number 78 from its junction with County State Aid Highway Number 20 to 1 1/2 miles North to a point common to the corners of Sections 2, 3, 10 and 11 all in Township 32, Range 24, Anoka County, Minnesota, in the City of Andover.

That portion of said County Road Number 78 located in Sections 10, 11, 14 and 15, Township 32, Range 24, Anoka County, Minnesota, as shown on this plat effected by the County of Anoka, Department of Highways is hereby certified to be the official plat of that portion of said County Road within said Sections pursuant to Minnesota Statutes 160.085.

Certified by: Paul K. Ruud, County Highway Engineer
Registration No. 6549

Dated 6/4, 1986

RIGHT-OF-WAY IN SECTIONS 14 and 15, T32, R24									
PARCEL	OWNER	LOCATION BY PARCEL IDENTIFICATION NUMBER (P.I.N.)	DEED RECORD DOCUMENT NUMBER OR BOOK & PAGE	TORRENS CERTIFICATE NO.	ENTIRE TRACT ACRES	NEW HIGHWAY RIGHT-OF-WAY ACRES	TEMPORARY EASEMENT ACRES	TEMP EASE EXPIRES ON DATE	BALANCE OF TRACT REMAINING ACRES
7	Orville G. and Dorothy E. Aasness	143224220001	176445		35.41	1.481			33.933
8	Orville G. and Dorothy E. Aasness	153224110001	176445		39.64	3.789			35.856
9	Edward J. and Mabel L. Bayers	153224140001	350025		37.91	3.617			34.297

PROCEDURAL STATEMENTS

- The methods and equipment used in the control surveys for this plat and the checks made on monument location were accomplished with electronic distance measuring devices.
- Parcel areas and entire tract areas shown hereon are computed from legal descriptions and not from actual surveys.
- Certificates of location are on file in the Office of the County Surveyor for the section corner monuments shown on this plat.
- For the details of the control survey and land survey, contact the County Surveyor's Office for survey of R/W Plat No. 27, County Project No. CP-02-678-05
- Bearings shown are based on Anoka County Coordinate Project System.

*Journal # 712228
Filed June 4, 1986
Book 2, Page 15
Highway - Right of Way
Plat*

*Traverse #
151555
Filed June 4, 1986*

I hereby certify that this is a true and correct representation of a survey of the boundaries as shown, and that said survey was made under my direct supervision, that all distances are correctly shown in feet and hundredths of a foot, that the monuments for the guidance of future surveys will be correctly placed in the ground as shown after the completion of construction, and that there are no wetlands or public highways to be designated on said plat other than as shown thereon.

Roland W. Anderson, Registration No. 5715
Roland W. Anderson
Anoka County Surveyor

Date June 4, 1986

