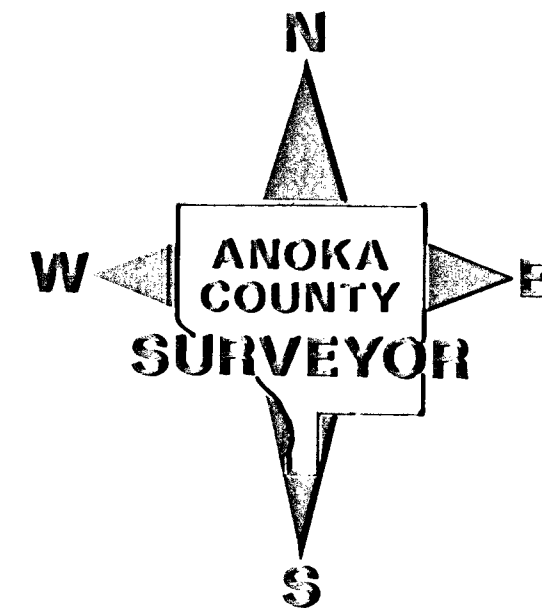
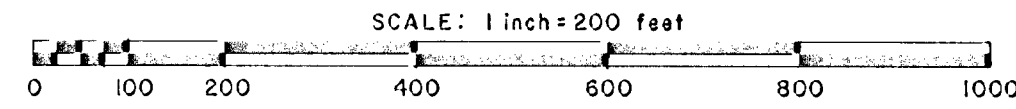


REVISED ANOKA COUNTY HIGHWAY RIGHT-OF-WAY PLAT NO. 34

County Highway Project No. S.A.P. 02-601-32

Doc. No. 936158
JUNE 17, 1991
Book 3 of Right-of-Way Plats
PAGE 8
(Doc. # 209479)



CONVENTIONAL SYMBOLS

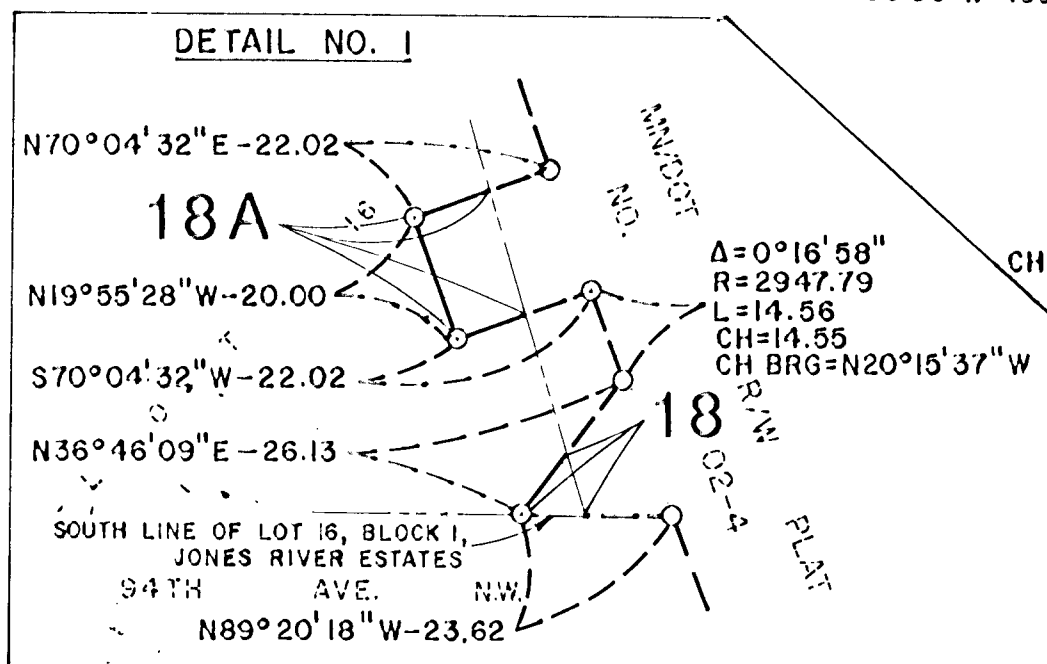
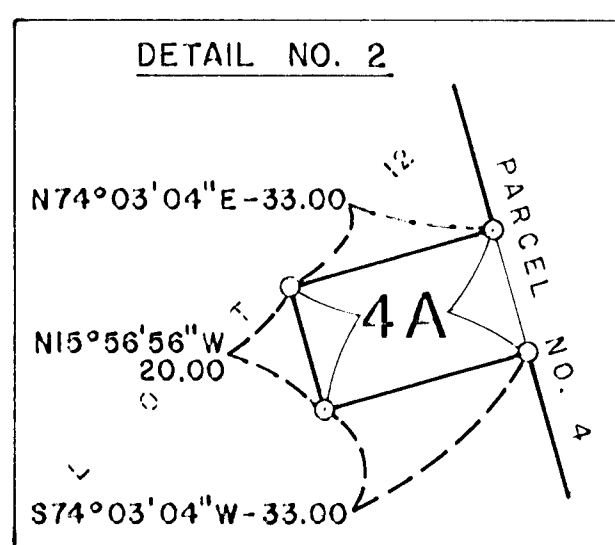
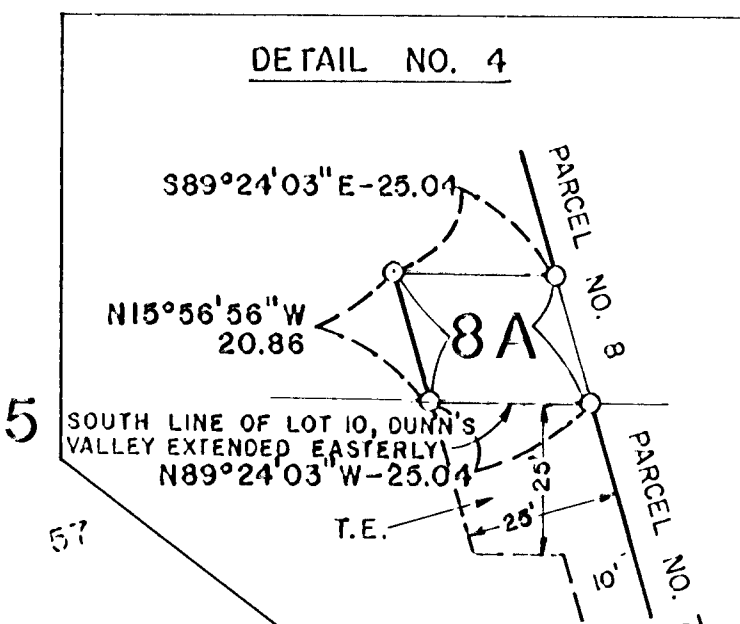
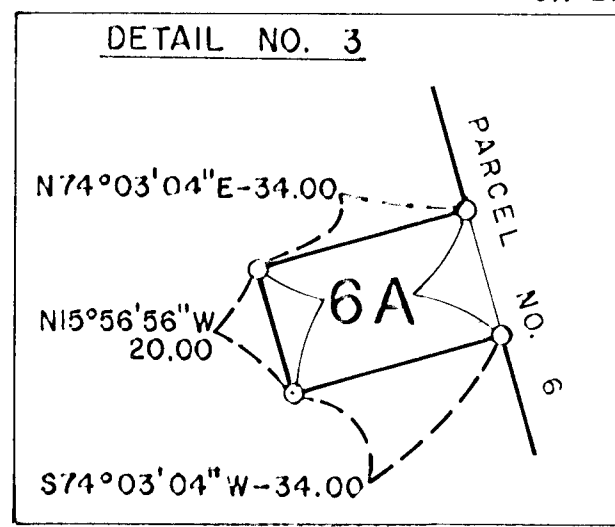
- Section Line _____
- Quarter Line _____
- Quarter Quarter Line _____
- Property Line _____
- Plat Boundary Line _____
- Existing R/W Line _____
- R/W Parcel Number 77
- Temporary Easement T.E. 7
- Right-of-Way Monument
- Plat Boundary Closure Line _____

PROCEDURAL STATEMENTS

1. The methods and equipment used in the control surveys for this plat and the checks made on monument locations were accomplished with electronic distance measuring devices.
2. Parcel areas and entire tract areas shown hereon are computed from legal descriptions and not from actual surveys.
3. Certificates of location are on file in the Office of the County Surveyor for the section corner monuments shown on this plat.
4. For the details of the control survey and land survey, contact the County Surveyor's Office for the survey of Revised Anoka County Highway R/W Plat No. 34, County Project No. S.A.P. 02-601-32.
5. Bearings shown are based on Anoka County Project Coordinate System.

DATA CONTAINED WITHIN THIS BOX FOR INSTRUCTIVE AND INFORMAL PURPOSES ONLY

PARCEL	OWNER	LOCATION: BY PARCEL IDENTIFICATION NUMBER (P.I.N.)	DEED RECORD DOCUMENT NUMBER OR BOOK PAGE	TORRENS CERTIFICATE NUMBER	ENTIRE TRACT		NEW HIGHWAY RIGHT-OF-WAY	TEMPORARY EASEMENT	TEMP. EASE. EXPIRES ON	BALANCE OF TRACT REMAINING
					ACRES	ACRES				
1	Chris Steven and LuAnn R. Jensen	263124440010	710496		0.284	0.012				0.272
2	Mark A. Yanta	263124430025		60736	0.890	0.024	0.056	12-31-92		0.866
3	Gary J. and Lucille P. Thomas	263124430035	594633		0.353	0.002	0.063	12-31-92		0.351
4	Roger A. and Vivian M. Hokanson, d/b/a Hokanson Investments	263124430075	871254		0.465	0.004				0.461
4A	Roger A. and Vivian M. Hokanson, d/b/a Hokanson Investments	263124430075	871254		0.465	0.015				0.450
4&4A					0.465	0.019	0.075	12-31-92		0.446
5	Roger A. and Vivian M. Hokanson, d/b/a Hokanson Investments	263124420018	871254		0.329	0.010	0.069	12-31-92		0.319
6	Arnold and Sharon St. Hilaire	263124420005	821094		4.552	0.137				4.415
6A	Arnold and Sharon St. Hilaire	263124420005	821094		4.552	0.016				4.536
6&6A					4.552	0.153	0.117	12-31-92		4.399
7	Anthony T. and Mary S. March	263124420006	364252		4.616	0.152	0.055	12-31-92		4.464
8	John and Joyce Mykulak	263124420007	886277 886278 886279		3.700	0.167				3.533
8A	John and Joyce Mykulak	263124420007	886277 886278 886279		3.700	0.011				3.689
8&8A					3.700	0.178	0.087	12-31-92		3.522
9	Ralph Walter and Grace Ruth Strike	263124420015		65799	4.260	0.046	0.071	12-31-92		4.214
10	Nelstone, Inc.	263124420014		65798	5.924	0.007	0.007	12-31-92		5.917
11	Nelstone, Inc.	263124420016		65798	0.885	0.029	0.069	12-31-92		0.856
12	Nelstone, Inc.	263124130020		65798	7.743	0.026	0.223	12-31-92		7.717
13	Bartley-Lindsay Properties	263124440027	731420		11.132	0.032	0.166	12-31-92		11.100
14	BTL Enterprises, Inc.	263124410007	831789		8.351	0.106	0.195	12-31-92		8.245
15	The John Roberts Company	263124410006	481299 481300		7.999	0.047				7.952
16	The John Roberts Company	263124410009		63976	1.561	0.004	0.022	12-31-92		1.557
17	The City of Coon Rapids	263124410008		63977	4.480	0.003	0.098	12-31-92		4.477
18	TCF Mortgage Corporation	263124430050	916038		0.693	0.001				0.692
18A	TCF Mortgage Corporation	263124430050	916038		0.693	0.006				0.687
18&18A					0.693	0.007	0.072	12-31-92		0.686
19	Nicholas Cenaiko	263124420003		62959	3.702	0.000	0.010	12-31-92		3.702



The Board of County Commissioners for Anoka County, Minnesota, pursuant to Board Resolution Number 87-95, dated September 8, 1987 is hereby designating the definite location of the right-of-way of County State Aid Highway Number 1 lying between its junction with County State Aid Highway Numbers 1 and 3 and southerly to its junction with Minnesota Trunk Highway Number 610.

That portion of said County State Aid Highway Number 1 located in Section 26, Township 31, Range 24, Anoka County, Minnesota, as shown on this plat effected by the County of Anoka, Department of Highways is hereby certified to be the official plat of that portion of said County State Aid Highway within said Sections pursuant to Minnesota Statutes 160.085.

Certified by *Paul K. Ruud*
Paul K. Ruud, County Highway Engineer
Registration No. 6549

Date June 17, 1991

I hereby certify that this is a true and correct representation of a survey of the boundaries as shown, and that said survey was made under my direct supervision, that all distances are correctly shown in feet and hundredths of a foot, that the monuments for the guidance of future surveys will be correctly placed in the ground as shown after the completion of construction, and that there are no wetlands or public highways to be designated on said plat other than as shown thereon.

M. D. Anderson Registration No. 13596
Merlyn D. Anderson
Anoka County Surveyor

Date June 17, 1991