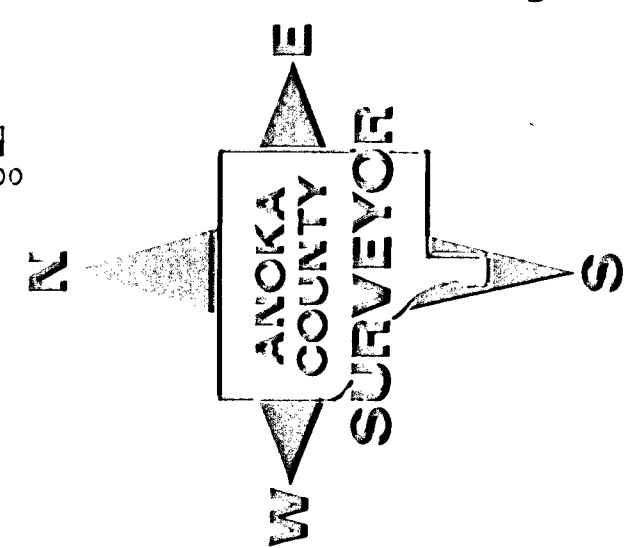
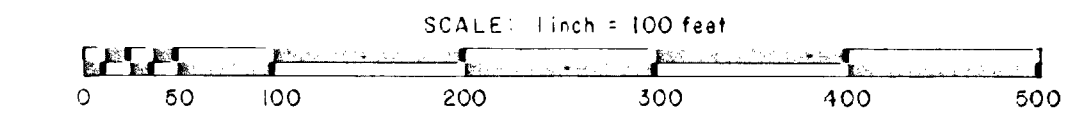
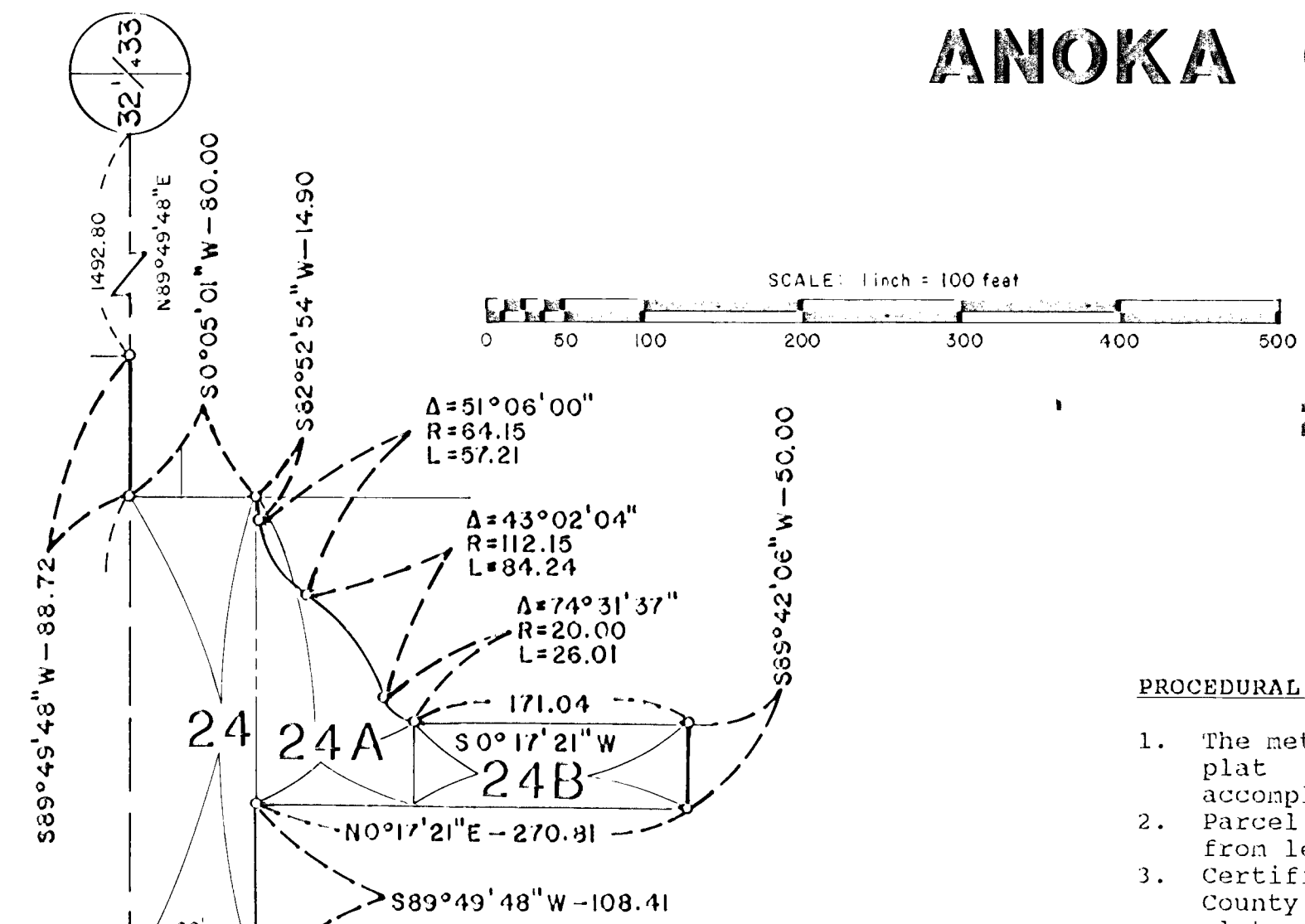


ANOKA COUNTY HIGHWAY RIGHT-OF-WAY PLAT NO. 47

County Highway Project No. S.A.P 02-609-10



CONVENTIONAL SYMBOLS

- Section Line
- Quarter Line
- Quarter Quarter Line
- Property Line
- Plat Boundary Line
- Existing R/W Line
- R/W Parcel Number
- Temporary Easement
- Right-of-Way Monument

PROCEDURAL STATEMENTS

1. The methods and equipment used in the control surveys for this plat and the checks made on monument locations were accomplished with electronic distance measuring devices.
2. Parcel areas and entire tract areas shown hereon are computed from legal descriptions and not from actual surveys.
3. Certificates of location are on file in the Office of the County Surveyor for the section corner monuments shown on this plat.
4. For the details of the control survey and land survey, contact the County Surveyor's Office for the survey of Anoka County Highway R/W Plat No. 47, County Project No. S.A.P. 02-609-10
5. Bearings shown are based on Anoka County Project Coordinate System.

The Board of County Commissioners for Anoka County, Minnesota, pursuant to Board Resolution Number 91-133, dated November 22, 1991 is hereby designating the definite location of the right-of-way of County State Aid Highway Number 9 from the south Andover city limits northerly to 139th Avenue NW; County State Aid Highway Number 16 from County State Aid Highway Number 9 easterly to Quay Street; County Road Number 116 from Undercliff Street NW easterly to County State Aid Highway No. 9.

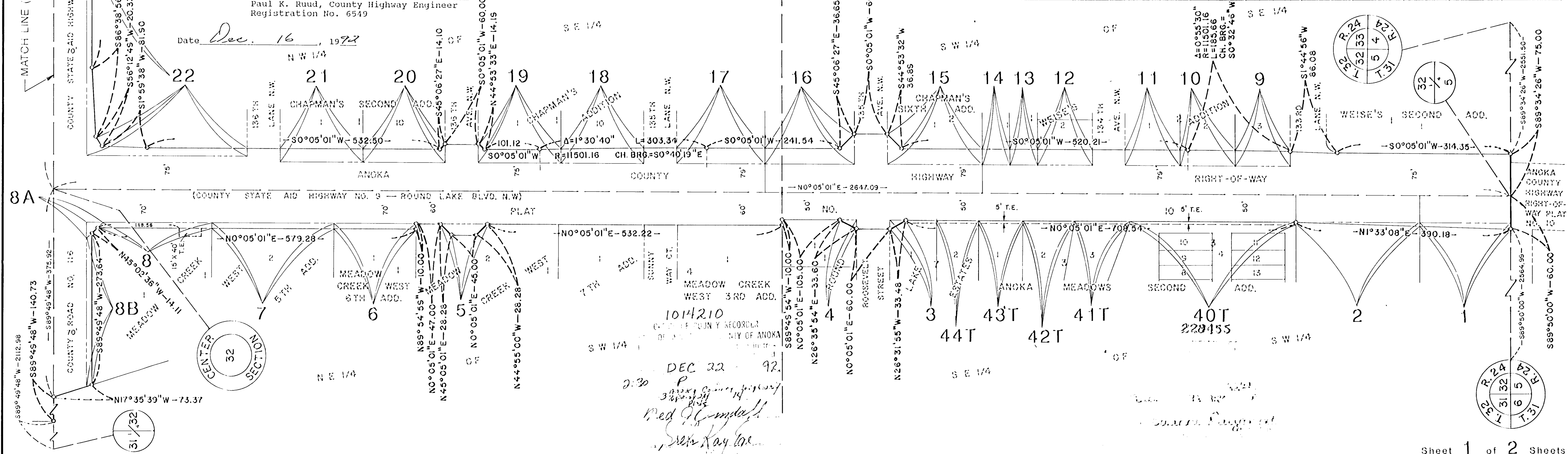
That portion of said County State Aid Highway Number 9 located in Section 32, Township 32, Range 24, Anoka County, Minnesota, as shown on this plat effected by the County of Anoka, Department of Highways is hereby certified to be the official plat of that portion of said County State Aid Highways and County Road within said Section pursuant to Minnesota Statutes 160.085.

I hereby certify that this is a true and correct representation of a survey of the boundaries as shown, and that said survey was made under my direct supervision, that all distances are correctly shown in feet and hundredths of a foot, that the monuments for the guidance of future surveys will be correctly placed in the ground as shown after the completion of construction, and that there are no wetlands or public highways to be designated on said plat other than as shown thereon.

Merlyn D. Anderson
 Merlyn D. Anderson
 Anoka County Surveyor
 Date Dec. 16 1992

Certified by *Paul K. Ruud*
 Paul K. Ruud, County Highway Engineer
 Registration No. 6549
 Date Dec. 16 1992

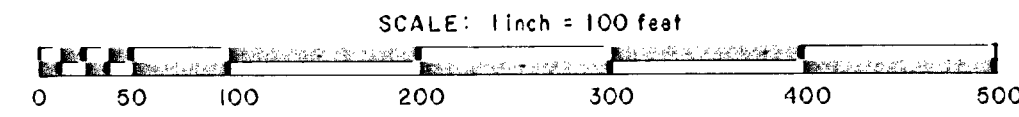
DATA CONTAINED WITHIN THIS BOX FOR INSTRUCTIVE AND INFORMAL PURPOSES ONLY										
RIGHT-OF-WAY IN SECTION 32, T. 32, R. 24										
PARCEL	OWNER	LOCATION: BY PARCEL IDENTIFICATION NUMBER (P.I.N.)	DEED RECORD DOCUMENT NO. OR BOOK, PAGE	TOWNSHIP CERTIFICATE NUMBER	ENTIRE TRACT ACRES	NEW HIGHWAY RIGHT OF WAY ACRES	TEMPORARY EASEMENT ACRES	TEMP. EASE. EXPIRES ON DATE	BALANCE OF TRACT REMAINING	
									ACRES	ACRES
1	Barbara A. Zimmerman	323224340004	923766 923787		0.568	0.030				0.538
2	Kuhn Properties, Inc.	323224340003	688053		0.775	0.015				0.760
3	Lan Krost and Jodi Josephson	323224340035		66665	0.257	0.005	0.007	12-31-94		0.252
4	The Evangelical Free Church of America	323224340007	681185		0.263	0.005				0.258
5	Boulevard Mall	323224310135	520166		1.363	0.030				1.333
6	Kenneth J. and Darlene L. Jindra	323224310132	751504		0.732	0.034				0.758
7	Meadow Creek I	323224310130	675664		1.127	0.051				1.076
8	Meadow Creek I	323224310129	675663		1.403	0.046	0.014	12-31-94		1.357
8A	Meadow Creek I	323224310129	675663		1.403	0.010				1.393
8B	Meadow Creek I	323224310129	675663		1.403	0.062				1.341
8A,8B					1.403	0.118				1.285
9	Lowell and Nora Lindgran	323224430028	287855		0.314	0.064				0.290
10	Lowell and Nora Lindgran	323224430027	297538		0.314	0.066				0.278
11	Lowell and Marie D. Howind	323224430026	330665		0.314	0.066				0.278
12	Loretta R. Mason and Stephen C. Bya	323224430026	444666		0.314	0.066				0.278
13	James V. and Mary Perunovich	323224430024	522775		0.176	0.033				0.143
14	Allan D. and Pamela J. Hathaway	323224430024	354900		0.168	0.033				0.135
15	Brian Keith and Toni Ann Dahl	323224430019	644959		0.391	0.122				0.272
16	John Arthur and Janice R. Quick	323224430001	371300		0.744	0.116				0.628
17	Eugene E. and Julia G. Brown	323224420055	383084		0.367	0.106				0.261
18	Blake J. and Celia J. Fleisher	323224420024	718222		0.314	0.034				0.250
19	Edward R. and Debra K. Sutherland	323224420015	538200		0.314	0.088				0.256
20	Patrick Joseph, Jr. and Susan L. Philben	323224420034	415307		0.344	0.087				0.257
21	Ray R. and Carol A. Jones	323224420025	429406		0.314	0.066				0.258
22	Grace Lutheran Church of Anoka, Minnesota	323224420009	307606		2.582	0.204				2.378
23	Grace Lutheran Church of Anoka, Minnesota	323224420007	307400		1.926	0.066	0.016	12-31-94		1.860
24	City of Andover	323224420003	UNRECORDED		0.551	0.551				0.000
24A	Meadow Creek Associates	323224420002	558939		1.864	0.250				1.614
24B	Meadow Creek Associates	323224420002	558939		1.864	0.197				1.667
24A, 24B					1.864	0.447				1.417
40T	Anoka Meadows Townhome Association, Inc.	323224340107		59753	1.527	0.000	0.035	12-31-94		1.527
41T	Scott and Janelle Gustafson	323224340106		72178	0.292	0.000	0.012	12-31-94		0.292
42T	Thao M. Vu, Thanh Nguyen and Nhi Y. Vu	323224340105		68742	0.254	0.000	0.011	12-31-94		0.254
43T	Randall J. and Vicki K. Weber	323224340104		68131	0.242	0.000	0.009	12-31-94		0.242
44T	Walker Scott and Heidi Marie Franz	323224340036		62160	0.230	0.000	0.009	12-31-94		0.230



1014210
 COUNTY RECORDS
 DEPT. OF COUNTY CLERK
 ANOKA COUNTY
 DEC 22 1992
Med J. ...
...

ANOKA COUNTY HIGHWAY RIGHT-OF-WAY PLAT NO. 47

County Highway Project No. S.A.P 02-609-10



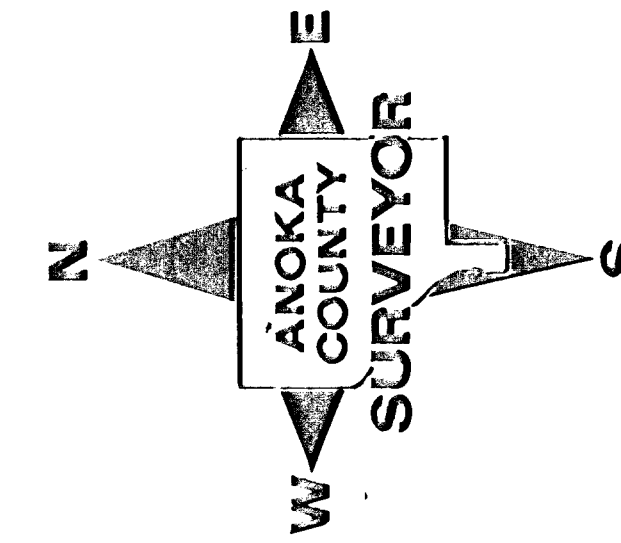
DATA CONTAINED WITHIN THIS BOX FOR INSTRUCTIVE AND INFORMAL PURPOSES ONLY

RIGHT-OF-WAY IN SECTION 32, T. 32, R. 24

PARCEL	OWNER	LOCATION: BY PARCEL IDENTIFICATION NUMBER (P.I.N.)	DEED RECORD DOCUMENT NO. OR BOOK PAGE	TORRENS CERTIFICATE NUMBER	ENTIRE TRACT ACRES	NEW HIGHWAY RIGHT OF WAY ACRES	TEMPORARY EASEMENT ACRES	TEMP. EASE. EXPIRES ON DATE	BALANCE OF TRACT REMAINING ACRES
25	Local Oil Company of Anoka, Inc.	323224240072		60389	1.536	0.008			1.528
25A	Local Oil Company of Anoka, Inc.	323224240072		60389	1.536	0.045			1.491
25B	Local Oil Company of Anoka, Inc.	323224240072		60389	1.536	0.063			1.473
25, 25A, 25B					1.536	0.116			1.420
26	Joseph D. and Marlys M. Chutich, Trustees Under Declaration of Trust Dated August 7, 1991	323224240071		69697	1.405	0.045			1.360
27	Doris L. Boie	323224240070		61825	0.527	0.012			0.515
27A	Doris L. Boie	323224240070		61825	0.527	0.028			0.499
27, 27A					0.527	0.040			0.487
28	Doris L. Boie	323224240069		69658	0.527	0.012			0.515
28A	Doris L. Boie	323224240069		69658	0.527	0.025			0.502
28, 28A					0.527	0.037			0.490
29	Donald A. and Marcia L. Schmidt	323224240011		64410	0.528	0.012			0.516
29A	Donald A. and Marcia L. Schmidt	323224240011		64410	0.528	0.025			0.503
29, 29A					0.528	0.037			0.491
30	Jay W. and Lola L. Fortner	323224240010		34496	0.529	0.012			0.517
30A	Jay W. and Lola L. Fortner	323224240010		34496	0.529	0.025			0.504
30, 30A					0.529	0.037			0.492
31	Alan B. and Linda M. Christiansen and Jeffrey A. Christiansen	323224240002		71276	0.521	0.012			0.509
32	Scott Allen and Gale Suzan Chambers	323224240031		64583	0.531	0.012			0.519
33	Gregory J. Spah	323224240004		70602	0.518	0.013			0.535

CONVENTIONAL SYMBOLS

- Section Line
- Quarter Line
- Quarter Quarter Line
- Property Line
- Plat Boundary Line
- Existing R/W Line
- R/W Parcel Number
- Temporary Easement
- Right-of-Way Monument



DATA CONTAINED WITHIN THIS BOX FOR INSTRUCTIVE AND INFORMAL PURPOSES ONLY

RIGHT-OF-WAY IN SECTION 32, T. 32, R. 24

PARCEL	OWNER	LOCATION: BY PARCEL IDENTIFICATION NUMBER (P.I.N.)	DEED RECORD DOCUMENT NO. OR BOOK PAGE	TORRENS CERTIFICATE NUMBER	ENTIRE TRACT ACRES	NEW HIGHWAY RIGHT OF WAY ACRES	TEMPORARY EASEMENT ACRES	TEMP. EASE. EXPIRES ON DATE	BALANCE OF TRACT REMAINING ACRES
34	Daniel G. Melander	323224240026		62965	0.548	0.013			0.535
35	Daniel G. Melander	323224240026		62966	0.159	0.003			0.156
36	Andover Limited Partnership	323224130080	759400		10.673	0.016			10.657
36A	Andover Limited Partnership	323224130080	759400		10.673	0.271	0.012	12-31-94	10.402
36B	Andover Limited Partnership	323224130080	759400		10.673	0.228	0.021	12-31-94	10.445
36, 36A, 36B					10.673	0.515			10.158
37	St. Anthony National Bank	323224130081	736367		1.676	0.071			1.605
38	Andover Limited Partnership	323224130079	604376		1.962	0.116	0.058	12-31-94	1.846
39	Andover Limited Partnership	323224130078	604376		1.196	0.066			1.130

