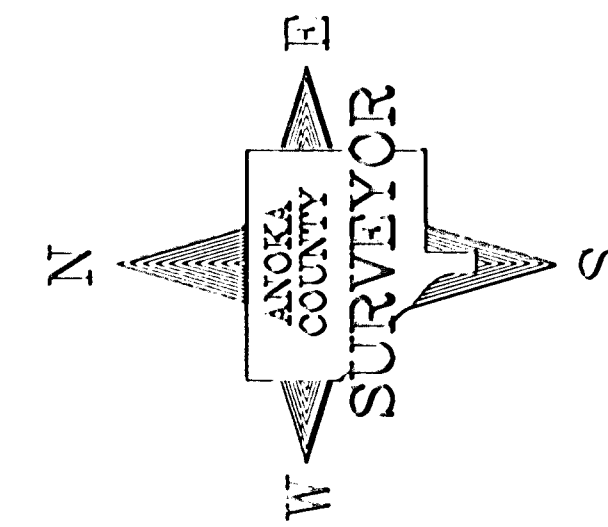
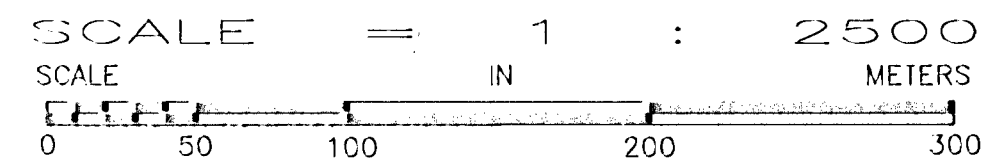


ANOKA COUNTY HIGHWAY RIGHT-OF-WAY PLAT NO. 54

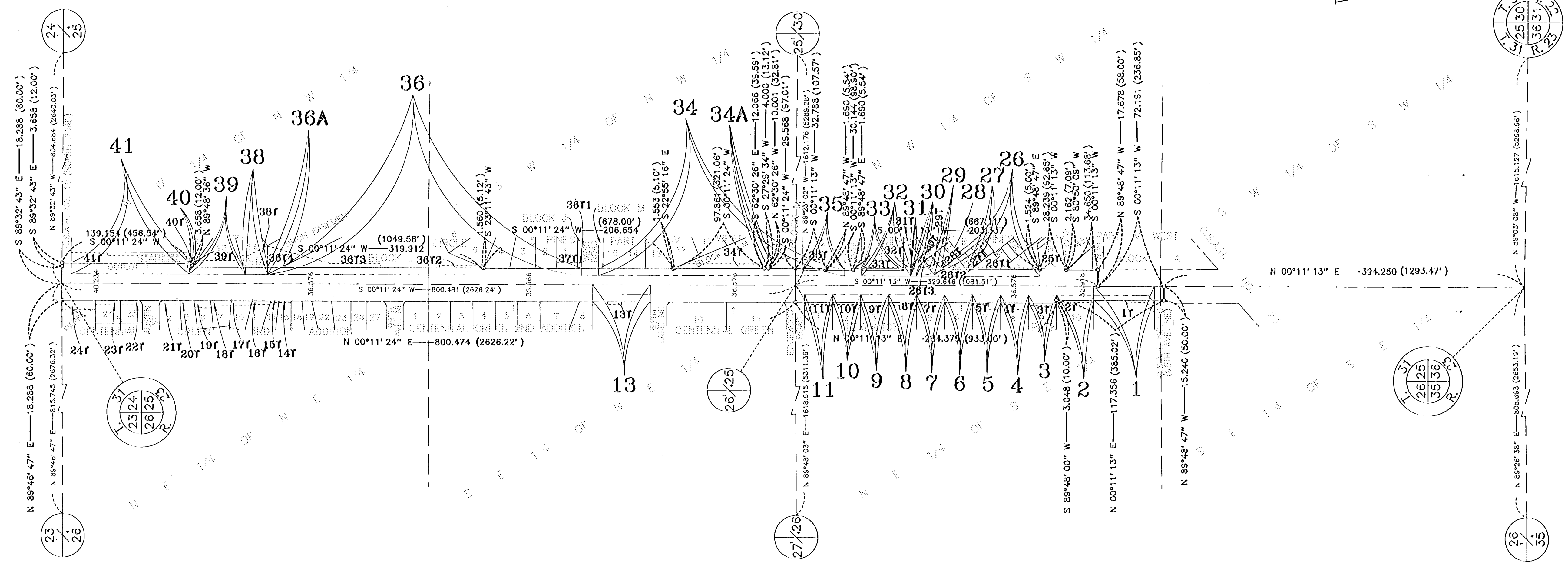
County Highway Project No. S.A.P. 02-617-11



294551

OFFICE OF REGISTERED PROFESSIONAL SURVEYORS
STATE OF MINNESOTA

Kelly A. Malin



CONVENTIONAL SYMBOLS

- Section Line ————
- Quarter Line ————
- Quarter Quarter Line ————
- Property Line ————
- Plat Boundary Line ————
- Existing R/W Line ————
- R/W Parcel Number 77
- Temporary Easement ————
- Right-of-Way Monument ————

PROCEDURAL STATEMENTS

1. The methods and equipment used in the control surveys for this plat and the checks made on monument locations were accomplished with electronic distance measuring devices.
2. Parcel areas and entire tract areas shown hereon are computed from legal descriptions and not from actual surveys.
3. Certificates of location are on file in the Office of the County Surveyor for the section corner monuments shown on this plat.
4. For the details of the control survey and land survey, contact the County Surveyor's Office for the survey of Anoka County Highway R/W Plat No. 54, County Project No. S.A.P. 02-617-11.
5. Bearings shown are based on Anoka County Project Coordinate System.
6. Distances shown are in meters unless denoted as feet (xxx.xx).

I hereby certify that this is a true and correct representation of a survey of the boundaries as shown, and that said survey was made under my direct supervision, that all distances are correctly shown in meters and thousands of a meter, that the monuments for the guidance of future surveys will be correctly placed in the ground as shown after the completion of construction, and that there are no public highways to be designated on said plat other than as shown thereon.

Merlyr D. Anderson Registration No. 13596
 Merlyr D. Anderson
 Anoka County Surveyor
 Date Apr. 3 1991

Doc # 1270313

3rd of April 91

300

300

300

Edward M. Tresha

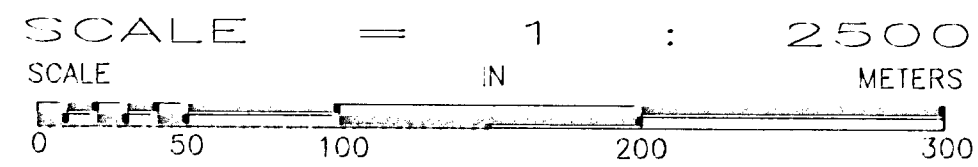
The Board of County Commissioners for Anoka County, Minnesota, pursuant to Board Resolution Number 96-172, dated December 17, 1996, is hereby designating the definite location of the right-of-way of County State Aid Highway Number 17 from its intersection with County State Aid Highway No. 23 northerly to its intersection with Pheasant Ridge Drive

That portion of said County State Aid Highway Number 17 located in Sections 23, 24, 25, 26, Township 31, Range 23, Anoka County, Minnesota, as shown on this plat effected by the County of Anoka, Department of Highways is hereby certified to be the official plat of that portion of said County State Aid Highway within said Section Pursuant to Minnesota Statutes 160.085.

Certified by Jon G. Olson
 Jon G. Olson, County Highway Engineer
 Registration No. 12183
 Date 4/3 1991

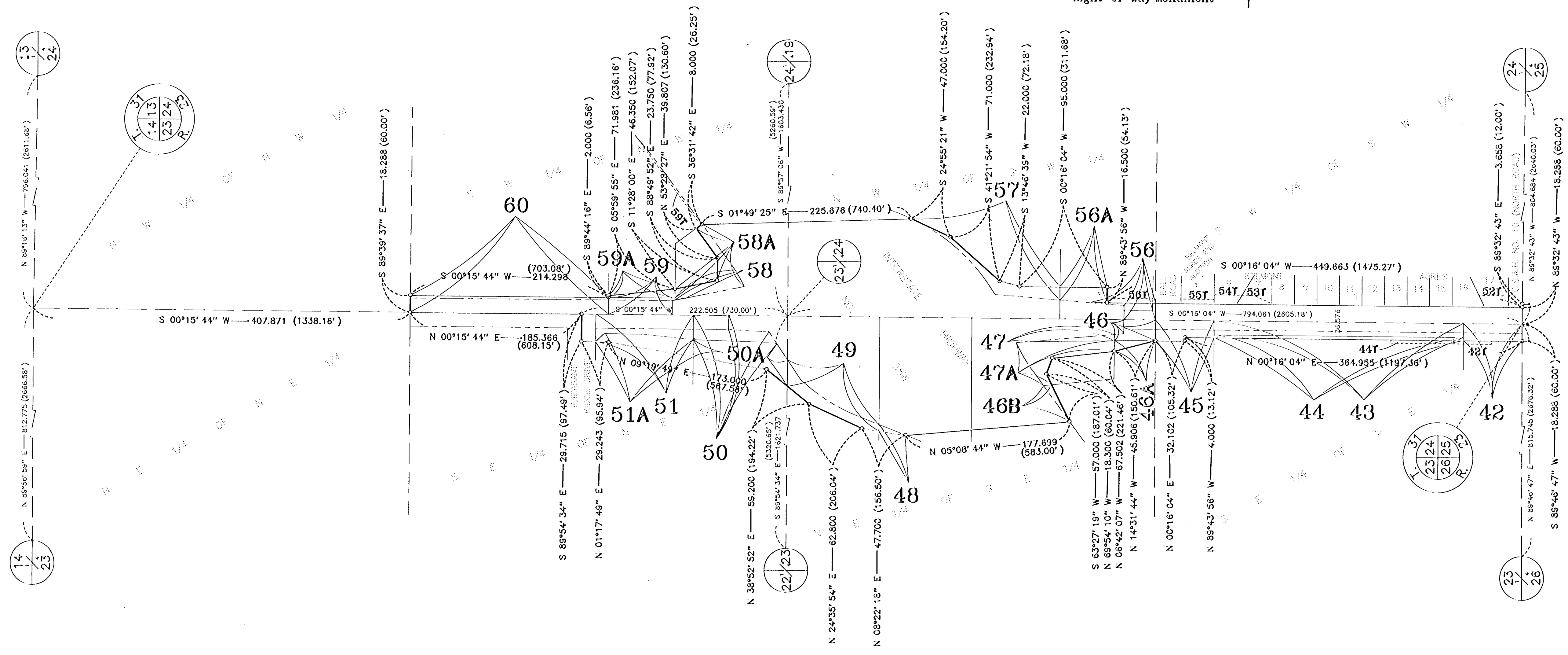
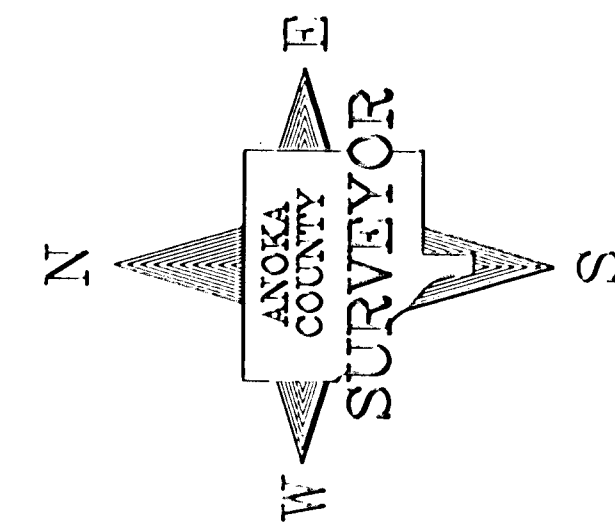
ANOKA COUNTY HIGHWAY RIGHT-OF-WAY PLAT NO. 54

County Highway Project No. S.A.P. 02-617-11



CONVENTIONAL SYMBOLS

- Section Line ————
- Quarter Line ————
- Quarter Quarter Line ————
- Property Line ————
- Plat Boundary Line ————
- Existing R/W Line ————
- R/W Parcel Number 77
- Temporary Easement 77
- Right-of-Way Monument ————



ANOKA COUNTY HIGHWAY RIGHT-OF-WAY PLAT NO. 54

County Highway Project No. S.A.P. 02-617-11

DATA CONTAINED WITHIN THIS BOX FOR INSTRUCTIVE AND INFORMAL PURPOSES ONLY										
RIGHT-OF-WAY IN SECTIONS 25 & 26, T. 31, R. 23										
PARCEL	OWNER	LOCATION: BY PARCEL IDENTIFICATION NUMBER (P.I.N.)	DEED RECORD	TORRENS	ENTIRE	EXISTING	NEW	TEMPORARY	TEMP. EASE.	BALANCE OF TRACT REMAINING
				CERTIFICATE NUMBER	TRACT	RIGHT-OF-WAY	HIGHWAY RIGHT-OF-WAY	EASEMENT	EXPIRES ON	
			DOCUMENT NO. OR BOOK, PAGE		HECTARES	HECTARES	HECTARES	HECTARES	DATE	HECTARES
1, 1T	City of Lexington	263123410001		75347	0.4050	0.0698	0.0320	0.0157	12-31-98	0.3032
2, 2T	City of Lexington	263123410011		75347	0.3730		0.0212	0.0098	12-31-98	0.3518
3, 3T	City of Lexington	263123410010		75347	0.2784		0.0251	0.0091	12-31-98	0.2533
4, 4T	Duane A. and Margaret Otte	263123410009		20605	0.2784		0.0251	0.0112	12-31-98	0.2533
5, 5T	Robert M. and Christine K. Otosen	263123410008		36470	0.2785		0.0251	0.0093	12-31-98	0.2534
6	Joseph E. and LaVonne G. Heifort	263123410007		63870	0.2785		0.0251			0.2534
7, 7T	Wayne W. Sauner	263123410006		54709	0.2786		0.0251	0.0028	12-31-98	0.2535
8, 8T	Terrence M. and Carole K. Aho	263123410005		56994	0.2786		0.0251	0.0172	12-31-98	0.2535
9, 9T	Richard and Mary Madelene Torgerson	263123410004		50856	0.2787		0.0251	0.0101	12-31-98	0.2536
10, 10T	Julie A. Listrom	263123410058		68547	0.1858		0.0251	0.0067	12-31-98	0.1607
11, 11T	Ralph J. and Kathleen M. Hudella	263123410056		66735	0.1858		0.0251	0.0110	12-31-98	0.1607
12	Parcel not used.									
13, 13T	Northern Natural Gas Company	263123140001	203744		0.4985	0.0637	0.0522	0.0046	12-31-98	0.3826
14T	Carolyn Marie Rengo	263123110097	780672		0.0670			0.0027	12-31-98	0.0670
15T	Gerald J. and Joyce A. Gannucci	263123110096	599461		0.0532			0.0018	12-31-98	0.0532
16T	David E. and Victoria L. Jackson	263123110093	1082423		0.0679			0.0080	12-31-98	0.0679
17T	Sharon Kay Schroeder	263123110092	785001		0.0639			0.0114	12-31-98	0.0639
18T	Charles E. and Wendy J. Ruper	263123110089	621743		0.0575			0.0111	12-31-98	0.0575
19T	Centennial Green 3rd Addition Owner's Association, Inc.	263123110088	1244638		0.0543			0.0145	12-31-98	0.0543
20T	Michael D. and Julie M. Johansen, FKA Julie M. Bangert	263123110085	1187171		0.0562			0.0077	12-31-98	0.0562
21T	Helen M. Claypool	263123110084	1016470		0.0838			0.0107	12-31-98	0.0838
22T	Richard L. and Elizabeth H. Henke	263123110133	603097		0.0594			0.0113	12-31-98	0.0594
23T	Bankers Trust Company of California	263123110134	1194204		0.0689			0.0137	12-31-98	0.0689
24T	City of Blaine	263123110136	577945		3.7215			0.0366	12-31-98	3.7215
25T	Bruce T. and Judith Helin Romie	253123320090		71537	0.0811			0.0043	12-31-98	0.0811
26, 26T1, 26T2, 26T3	City of Circle Pines	253123320081	14415	48319	0.2685		0.1042	0.0226	12-31-98	0.1643
27, 27T	Circle Court, Inc.	253123320068		81776	0.0183		0.0011	0.0013	12-31-98	0.0172
28, 28T	Circle Court, Inc.	253123320065		81776	0.0156		0.0001	0.0022	12-31-98	0.0155
29, 29T	Circle Court, Inc.	253123320064		81776	0.0184		0.0049	0.0082	12-31-98	0.0135
30, 30T	Circle Court, Inc.	253123320080		81776	0.3139		0.0052	0.0090	12-31-98	0.3087
31, 31T	Circle Court, Inc.	253123320085		81776	0.9578		0.0005	0.0020	12-31-98	0.9573
32, 32T	City of Circle Pines	253123320084	14415	43037	3.4230		0.0341	0.0030	12-31-98	3.3889
33, 33T	Randall C. Kall, Candice L. and Robert Bishop, and Bonnie and Kenneth T. Potthoff	253123320001		80159	0.1115		0.0098	0.0069	12-31-98	0.1017
34, 34T	City of Circle Pines	253123230059	14415	43037	1.2566		0.2060	0.1026	12-31-98	1.0506
34A	City of Circle Pines	253123230059	14415	43037	1.2566		0.0044			1.2522
35, 35T	Raymond L. and Mary Lou Bergren	253123320023		21996	0.1115		0.0062	0.0260	12-31-98	0.1053
36, 36T1, 36T2, 36T3	City of Circle Pines	253123220005	14415	43037	1.5588		0.2688	0.0709	12-31-98	1.2900
36A, 36T4	City of Circle Pines	253123220005	14415	43037	2.9116		0.0068	0.0565	12-31-98	2.9048
37T	Donald A. Stule	253123230035		50215	0.0975			0.0151	12-31-98	0.0975
38, 38T	Laurell A. Hanover	253123220092		52106	0.1503		0.0210	0.0465	12-31-98	0.1293
39, 39T	Linda Lou Peterson	253123220091		49240	0.1900		0.0485	0.0390	12-31-98	0.1415
40, 40T	Richard A. and Dee Lynne M. Speltstoeszer	253123220090		41081	0.1215		0.0011	0.0045	12-31-98	0.1204
41, 41T	Galilee Baptist Church of Circle Pines, Minnesota	253123220102		53151	0.3029		0.1535	0.1153	12-31-98	0.1494

DATA CONTAINED WITHIN THIS BOX FOR INSTRUCTIVE AND INFORMAL PURPOSES ONLY										
RIGHT-OF-WAY IN SECTIONS 23 & 24, T. 31, R. 23										
PARCEL	OWNER	LOCATION: BY PARCEL IDENTIFICATION NUMBER (P.I.N.)	DEED RECORD	TORRENS	ENTIRE	EXISTING	NEW	TEMPORARY	TEMP. EASE.	BALANCE OF TRACT REMAINING
				CERTIFICATE NUMBER	TRACT	RIGHT-OF-WAY	HIGHWAY RIGHT-OF-WAY	EASEMENT	EXPIRES ON	
			DOCUMENT NO. OR BOOK, PAGE		HECTARES	HECTARES	HECTARES	HECTARES	DATE	HECTARES
42, 42T	Mills Properties, Inc.	233123440003	1201629		0.4047	0.0840	0.0524	0.0146	12-31-98	0.2883
43	Adela D. Flor	233123440038	159238		0.4112	0.2714	0.1398			0.0000
44, 44T	Mills Properties, Inc.	233123440001	1201630		13.0540		0.0823	0.0351	12-31-98	12.9717
45	Mills Properties, Inc.	233123440004	1201631		0.4047	0.0840	0.0652			0.2755
46	Holiday Stationstores, Inc.	233123410004	1228563		1.2902	0.0344	0.0490			1.2068
46A	Holiday Stationstores, Inc.	233123410004	1228563		1.2902	0.0344	0.0256			1.2302
46B	Holiday Stationstores, Inc.	233123410004	1228563		1.2902	0.0344	0.0183			1.2375
47	Amoco Oil Company	233123410005	772167		0.4459		0.0310			0.4149
47A	Amoco Oil Company	233123410005	772167		0.4459		0.2092			0.2367
48	NCR Corporation	233123410003	931733		0.6684		0.0101			0.6583
49	NCR Corporation	233123410002	931733		1.1240		0.1416			0.9824
50	NCR Corporation	233123140002	931733		4.0122	0.0580	0.1004			3.8538
50A	NCR Corporation	233123140002	931733		4.0122	0.0580	0.2615			3.6927
51	NCR Corporation	233123140003	931733		4.2882	0.1605	0.0802			4.0475
51A	NCR Corporation	233123140003	931733		4.2882	0.1605	0.1442			3.9835
52T	John M. and Diana L. Kommer	243123330019	766367		0.1484			0.0331	12-31-98	0.1484
53T	Stephen M. Klein	243123330009	933649		0.0938			0.0230	12-31-98	0.0938
54T	Allen S. and Denyce L. Weyker	243123330008	762693		0.1361			0.0246	12-31-98	0.1361
55T	Keith T. and Diane N. Harstad	243123330110	662713		0.1929			0.0144	12-31-98	0.1929
56, 56T	Blaine Convenience Center Partnership	243123320002	958613		1.4555	0.0369	0.0319	0.0198	12-31-98	1.3667
56A	Blaine Convenience Center Partnership	243123320002	958613		1.4555	0.0369	0.0812			1.3374
57	Keith T. and Diane N. Harstad	243123320003	662714		11.5344		0.1433			11.3911
58	Douglas C. Anderson	243123230003	861707 861706		0.3792		0.0014			0.3778
58A	Douglas C. Anderson	243123230003	861707 861706		0.3792		0.1583			0.2209
59, 59T	Douglas C. Anderson	243123230002	861701 861702		1.3705	0.1047	0.0217	0.0211	12-31-98	1.2441
59A	Douglas C. Anderson	243123230002	861701 861702		1.3705	0.1047	0.0424			1.2234
60	Blaine Economic Development Authority	243123230001	864373 864374		6.8707	0.3266	0.0653			6.4788