

# 2022 STREET SURFACE IMPROVEMENT PROJECT

## EAST BETHEL, MINNESOTA

### GOVERNING SPECIFICATIONS

THE 2020 EDITION OF THE MINNESOTA DEPARTMENT OF TRANSPORTATION "STANDARD SPECIFICATIONS FOR CONSTRUCTION" SHALL APPLY.

ALL FEDERAL, STATE AND LOCAL LAWS, REGULATIONS, AND ORDINANCES SHALL BE COMPLIED WITH IN THE CONSTRUCTION OF THIS PROJECT.

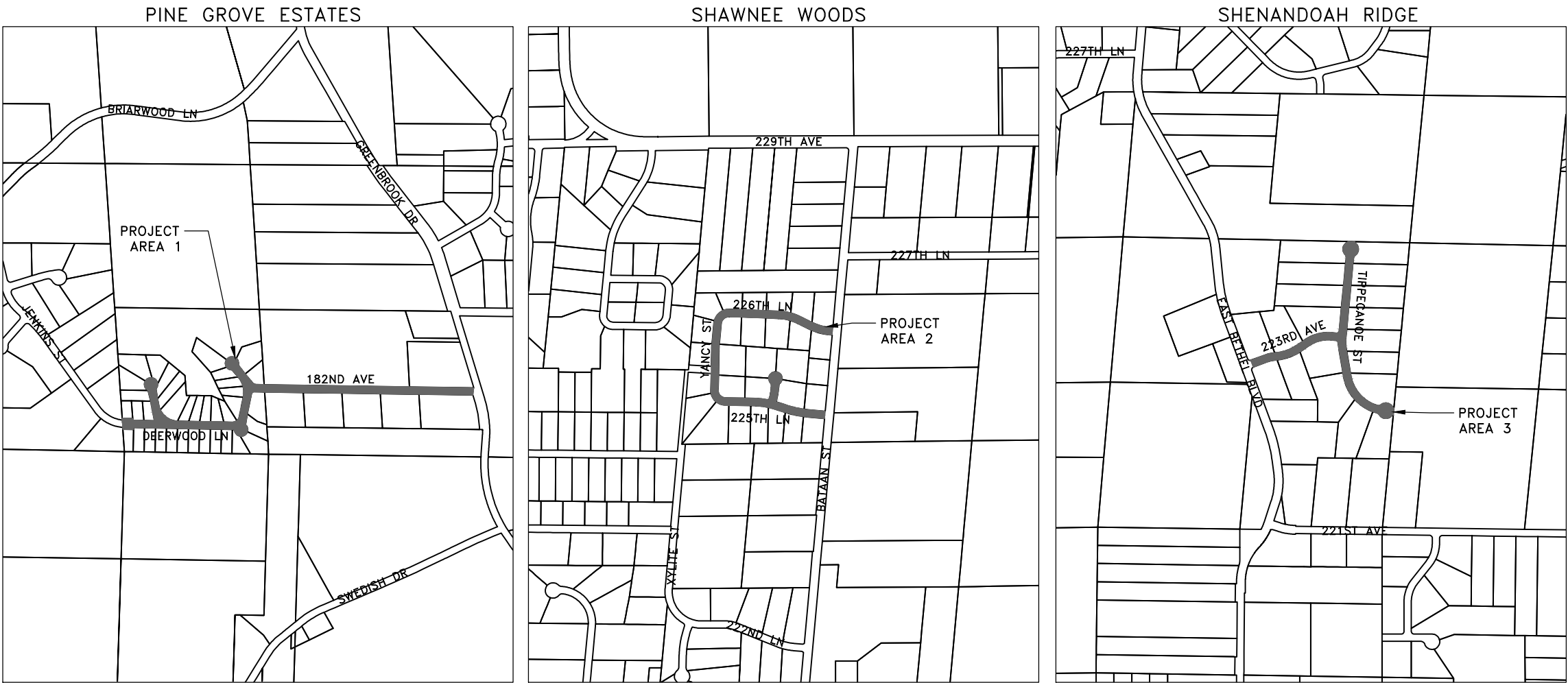
ALL TRAFFIC CONTROL DEVICES AND SIGNING SHALL CONFORM TO THE LATEST EDITION OF THE MINNESOTA MANUAL ON UNIFORM TRAFFIC CONTROL DEVICES, INCLUDING THE LATEST FIELD MANUAL FOR TEMPORARY TRAFFIC CONTROL ZONE LAYOUTS.

ALL REQUIREMENTS OF THE PROJECT MANUAL FOR THE 2022 STREET SURFACE IMPROVEMENT PROJECT.

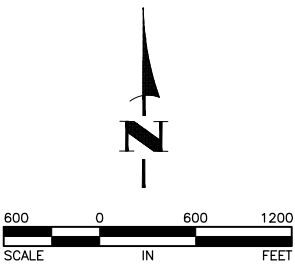
### SHEET INDEX

THIS PLAN CONTAINS 19 SHEETS

SHEET NO.	DESCRIPTION
1	TITLE SHEET
2	ESTIMATED QUANTITIES, TABULATIONS, AND CONSTRUCTION NOTES
3	TYPICAL SECTIONS AND DETAILS
4	DETAILS
5-10	PROJECT AREA 1 CONSTRUCTION PLANS
11-14	PROJECT AREA 2 CONSTRUCTION PLANS
15-17	PROJECT AREA 3 CONSTRUCTION PLANS
18	DEERWOOD LANE STORM SEWER REMOVAL PLAN
19	DEERWOOD LANE STORM SEWER CONSTRUCTION PLAN

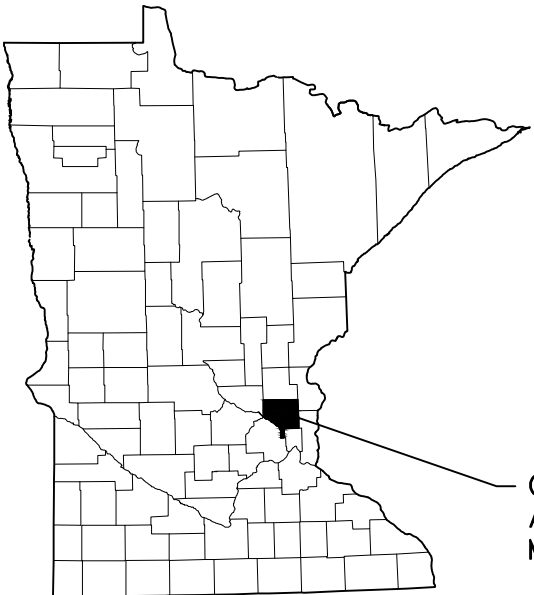


PROJECT LOCATION



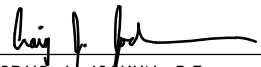
**Hakanson Anderson**  
Civil Engineers and Land Surveyors  
3601 Thurston Ave., Anoka, Minnesota 55303  
763-427-5860 FAX 763-427-0520

THE SUBSURFACE UTILITY INFORMATION IN THIS PLAN IS UTILITY QUALITY LEVEL D. THIS QUALITY LEVEL WAS DETERMINED ACCORDING TO THE GUIDELINES OF CI/ASCE 38-2, ENTITLED "STANDARD GUIDELINES FOR THE COLLECTION AND DEPICTION OF EXISTING SUBSURFACE UTILITY DATA."



CITY OF EAST BETHEL,  
ANOKA COUNTY,  
MINNESOTA

I hereby certify that this plan, specification, or report was prepared by me or under my direct supervision and that I am a duly Licensed Professional Engineer under the laws of the State of Minnesota.

  
CRAIG J. JOCHUM, P.E.  
HAKANSON ANDERSON  
DESIGN ENGINEER

23461 DATE 5/23/22  
LIC. NO.

DATE	REVISION

Jun 03, 2022 -- 2:32pm  
K:\MUNICIPAL\EB358\ENGINEERING\PLAN DWG\EB358\_DETAILS.dwg

ESTIMATED QUANTITIES								
ITEM NO.	REF. NOTES	Mn/DOT SPEC. NO.	ITEM DESCRIPTION	UNIT	TOTAL ESTIMATED QUANTITY	PINE GROVE ESTATES - PROJECT AREA 1	SHAWNEE WOODS - PROJECT AREA 2	SHENANDOAH RIDGE - PROJECT AREA 3
		2021.501	MOBILIZATION	LUMP SUM				
		2104.503	SAWING CONCRETE PAVEMENT - FULL DEPTH	LIN FT	23			23
		2104.503	SAWING BITUMINOUS PAVEMENT - FULL DEPTH	LIN FT	733	90		643
		2104.503	REMOVE PIPE CULVERT	LIN FT	156	156		
		2104.504	REMOVE BITUMINOUS PAVEMENT	SQ YD	433	222		211
		2104.504	REMOVE CONCRETE PAVEMENT	SQ YD	18			18
		2211.509	AGGREGATE BASE CLASS 5	TON	132	79	2	51
		2232.604	MILL BITUMINOUS SURFACE (SPECIAL)	SQ YD	7335	3197	4138	
		2232.604	MILL BITUMINOUS SURFACE 1.5"	SQ YD	257	85	38	134
		2357.506	BITUMINOUS MATERIAL FOR TACK COAT	GALLONS	2313	992	734	587
		2360.504	TYPE SP 9.5 WEARING COURSE MIXTURE (2,B) 2.5" THICK	SQ YD	221	10		211
		2360.509	TYPE SP 9.5 WEARING COURSE MIXTURE (2,B)	TON	3160	1,370	994	796
		2411.502	CONCRETE FLUME	EACH	2		2	
		2501.502	15" RC PIPE APRON	EACH	2	2		
		2503.503	15" RC PIPE SEWER DESIGN 3006 CLASS V	LIN FT	83	83		
		2506.502	CASTING ASSEMBLY	EACH	2	2		
		2506.503	CONSTRUCT DRAINAGE STRUCTURE DESIGN 48-4020	LIN FT	11	11.1		
		2511.504	GEOTEXTILE FILTER TYPE 7	SQ YD	150	140	10	
		2511.507	RANDOM RIPRAP CLASS III	CU YD	60	50	10	
		2531.504	6" CONCRETE DRIVEWAY PAVEMENT	SQ YD	12	2		10
		2535.503	BITUMINOUS CURB	LIN FT	383		383	
		2540.618	SALVAGE RETAINING WALL	SQ FT	160	160		
		2563.601	TRAFFIC CONTROL	LUMP SUM				
		2573.502	STORM DRAIN INLET PROTECTION	EACH	2	2		
		2573.503	SILT FENCE; TYPE MS	LIN FT	30		30	
		2574.507	COMMON TOPSOIL BORROW	CU YD	200	60	10	130
		2574.508	FERTILIZER TYPE 1	POUND	150	30	30	90
		2575.504	ROLLED EROSION PREVENTION CATEGORY 25	SQ YD	160			160
		2575.505	SEEDING	ACRE	0.50	0.10	0.1	0.30
		2575.508	HYDRAULIC BONDED FIBER MATRIX	POUND	1750	350	350	1050
		2575.508	SEED, MIXTURE 25-121	POUND	74	15	15	44

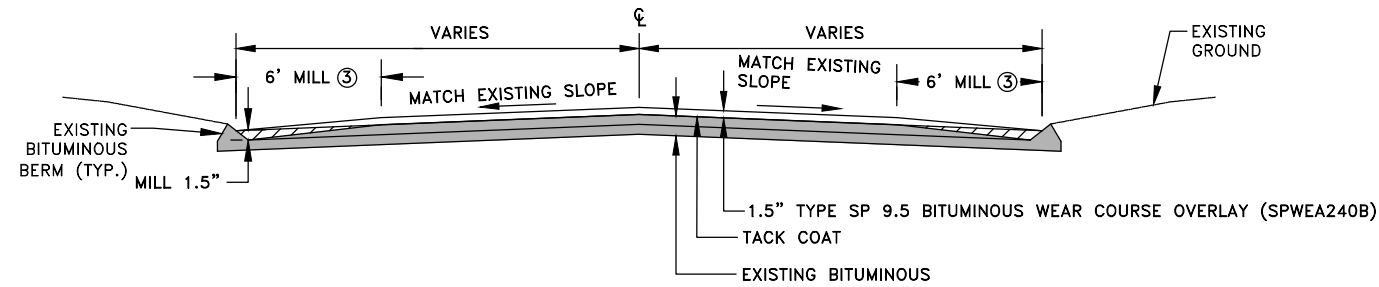
STANDARD PLATES	
THESE STANDARD PLATES AS APPROVED BY THE FHWA SHALL APPLY	
PLATE NO.	DESCRIPTION
3000M	REINFORCED CONCRETE PIPE (6 SHEETS)
3006H	GASKET JOINT FOR R.C. PIPE (2 SHEETS)
3007F	SHEAR REINFORCEMENT FOR PRECAST DRAINAGE STRUCTURES
3100G	CONCRETE APRON FOR REINFORCED CONCRETE PIPE
3133D	RIPRAP AT RCP OUTLETS
3145G	CONCRETE PIPE OR PRECAST CULVERT TIES
4011E	PRECAST CONCRETE BASE
4020J	MANHOLE OR CATCH BASIN (FOR USE WITH OR WITHOUT TRAFFIC LOADS) (2 SHEETS)
4026A	CONCRETE ENCASED CONCRETE ADJUSTING RINGS
4108F	ADJUSTING RINGS FOR CATCH BASINS AND MANHOLES
4149C	GRATE CASTING FOR CATCH BASIN - CASTING NO. 810
4160D	CURB BOX CASTING FOR CATCH BASIN - CASTING NO. 823A AND 833A
4180J	MANHOLE OR CATCH BASIN STEP
7100H	CONCRETE CURB AND GUTTER (DESIGN B AND DESIGN V)
7111J	INSTALLATION OF CATCH BASIN CASTINGS (CONCRETE CURB AND GUTTER)
8000K	TEMPORARY CHANNELIZERS (3 SHEETS)

BASIS OF ESTIMATED QUAN TITIES	
AGGREGATE BASE CLASS 5	100 lbs/yd <sup>2</sup> /in
NON WEARING BITUMINOUS COURSE MIXTURE	110 lbs/yd <sup>2</sup> /in
WEARING COURSE BITUMINOUS MIXTURE	110 lbs/yd <sup>2</sup> /in
BITUMINOUS MATERIAL FOR TACK COAT - NEW ASPHALT	0.06 gal/yd <sup>2</sup>
BITUMINOUS MATERIAL FOR TACK COAT - OLD ASPHALT	0.07 gal/yd <sup>2</sup>
BITUMINOUS MATERIAL FOR TACK COAT - MILLED ASPHALT	0.08 gal/yd <sup>2</sup>
HYDRAULIC FIBER BONDED MATRIX	3500 lbs/acre
SEED MIX 25-121	122 lbs/acre
TYPE 1, COMMERCIAL FERTILIZER	300 lbs/acre

GENERAL CONSTRUCTION NOTES:

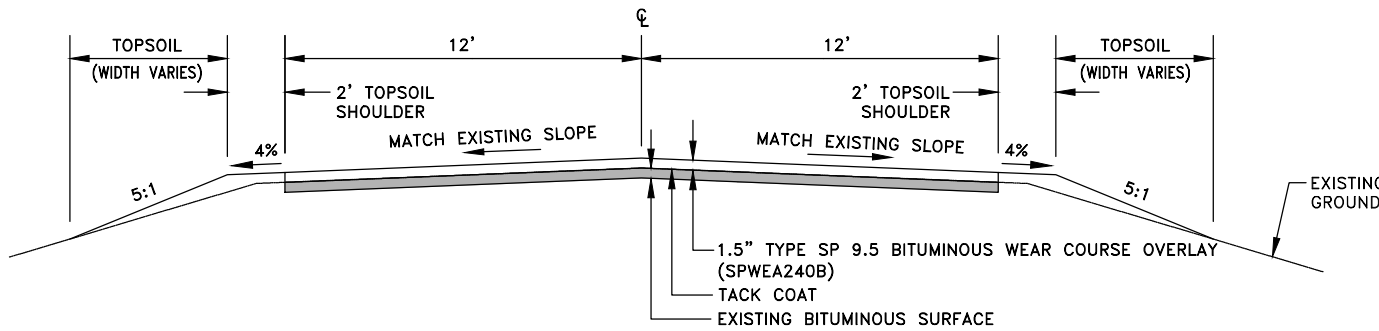
1. SALVAGING AND INSTALLING MAILBOXES OR SIGNS IF REQUIRED FOR CONSTRUCTION SHALL BE INCIDENTAL.
2. CONTRACTOR SHALL TAPER/RAMP THE MILL AT ALL MATCH POINTS. ON THE DAY THE PAVEMENT WILL BE CONSTRUCTED AT EACH MATCH POINT THE CONTRACTOR SHALL PROVIDE A STRAIGHT PERPENDICULAR MILL AND REMOVE THE TAPER/RAMP. TAPERING/RAMPING AND PROVIDING A PERPENDICULAR MILL AT ALL MATCH POINTS SHALL BE INCIDENTAL.
3. ALL DISTURBED AREAS AT REMOVAL LOCATIONS AND DRIVEWAYS SHALL BE SEEDED, FERTILIZED AND MULCHED WITH HYDRAULIC BONDED FIBER MATRIX AT THE RATES SHOWN ON THE BASIS OF ESTIMATED QUANTITIES. CONTRACTOR SHALL SALVAGE AND REPLACE ALL EXISTING TOPSOIL. REMOVAL AND DISPOSAL OF EXISTING MATERIALS AND SOIL SHALL BE INCIDENTAL. ALL LABOR, MATERIAL AND EQUIPMENT REQUIRED TO ESTABLISHING TURF SHALL BE INCLUDED IN THE ITEMS PROVIDED ON THE BID FORM. SALVAGING TOPSOIL SHALL BE INCIDENTAL.
4. BITUMINOUS AND CONCRETE ITEMS DISTURBED BY CONSTRUCTION SHALL BECOME THE PROPERTY OF THE CONTRACTOR AND SHALL BE DISPOSED OF IN ACCORDANCE WITH MN/DOT SPEC. 2104.
5. PERFORMANCE GRADE (PG) ASPHALT BINDER PG 58S-28, SPEC. 3151, SHALL BE USED FOR ALL BITUMINOUS MIXES IN THIS PROJECT, SPECIFIC PG GRADES SHALL BE STATED IN THE SPECIAL PROVISIONS AND AT THE END OF THE MIX DESIGNATION NUMBER SHOWN ON THE TYPICAL SECTION.
6. THE BITUMINOUS MIXTURES SHALL MEET THE REQUIREMENTS OF SPECIFICATIONS 2360 AND 3139.
7. CONTRACTOR SHALL SWEEP STREETS PRIOR TO PLACING THE WEARING COURSE. THIS WORK SHALL BE INCIDENTAL.
8. CONTRACTOR SHALL TAPER THE BITUMINOUS OVERLAYS TO MATCH THE EXISTING BITUMINOUS FLUMES UNLESS SHOWN ON THE PLANS FOR REMOVAL. THIS WORK SHALL BE INCIDENTAL. REMOVAL OF FLUMES SHALL BE PAID PER ITEM 2104 REMOVE BITUMINOUS PAVEMENT.
9. ANY DEWATERING REQUIRED TO COMPLETE THE WORK SHALL BE INCIDENTAL.
10. THE CONTRACTOR SHALL BE RESPONSIBLE TO CALL IN LOCATES AND COORDINATE WITH THE SMALL UTILITIES (GAS, PHONE, ELECTRIC, ETC.) AS REQUIRED TO COMPLETE THE WORK.

DATE	REVISION	I hereby certify that this plan, specification, or report was prepared by me or under my direct supervision and that I am a duly Licensed Professional Engineer under the laws of the State of Minnesota.   CRAIG J. JOCHUM, P.E. Date 5/23/22 Lic. No. 23461	DESIGNED BY: CJJ		Hakanson Anderson Civil Engineers and Land Surveyors 3601 Thurston Ave., Anoka, Minnesota 55303 763-427-5860 FAX 763-427-0520 www.hakanson-anderson.com	2022 STREET SURFACE IMPROVEMENT PROJECT	ESTIMATED QUANTITIES, TABULATIONS, AND CONSTRUCTION NOTES  EAST BETHEL, MINNESOTA	SHEET 2 OF 19 SHEETS
			DRAWN BY: SGJ					
			CHECKED BY: TAE					



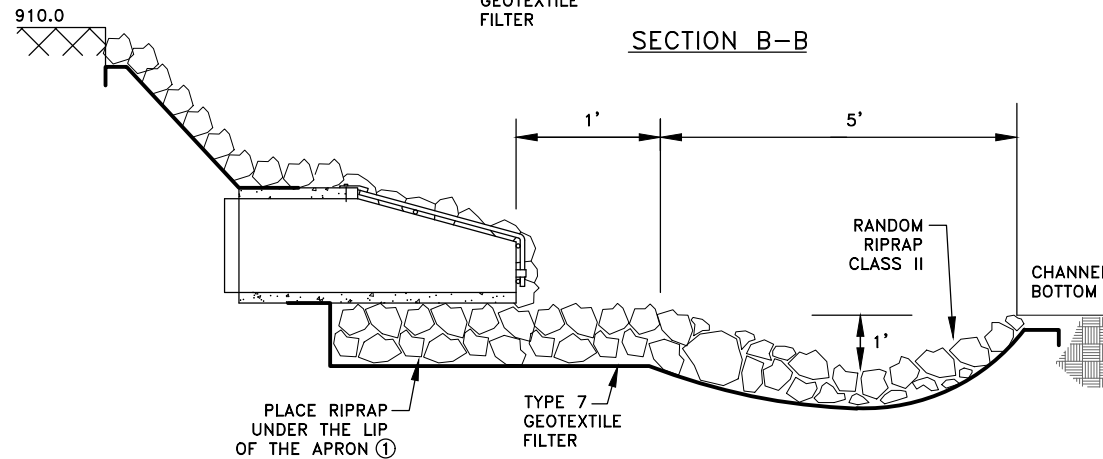
**TYPICAL URBAN OVERLAY SECTION**  
DEERWOOD LANE, ANTLER CIRCLE, 225TH LANE, 226TH LANE, YANCY STREET, AND ALAMO STREET

1  
3

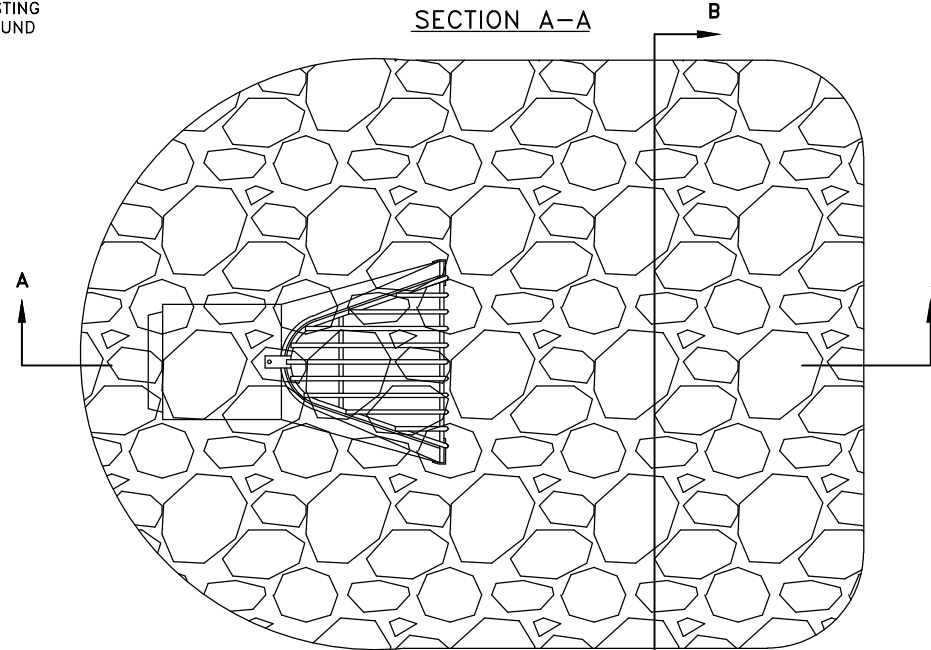


**TYPICAL RURAL OVERLAY SECTION**  
182ND AVENUE, 223RD AVENUE, TIPPECANOE STREET ④

2  
3

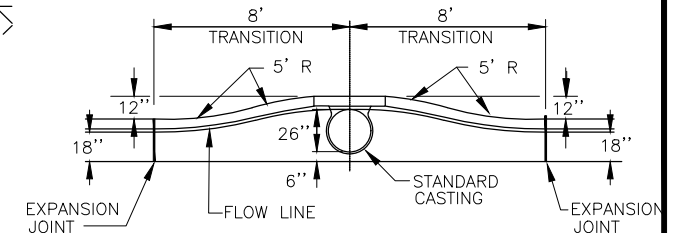


**SECTION A-A**

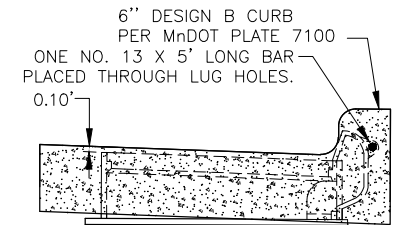


**3 RIPRAP PLACEMENT AT RCP OUTLETS**  
N.T.S.

3  
3



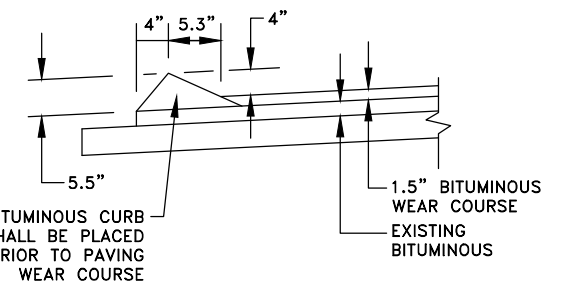
**PLAN**



**CURB REINFORCING (DESIGN B CURB)**

**CURB & GUTTER CONSTRUCTION AT CATCH BASIN ②**  
NO SCALE

4  
3



**5 MODIFIED BITUMINOUS CURB ⑤**  
N.T.S.

5  
3

**REFERENCE NOTES:**

- ① RIPRAP AND GEOTEXTILE FILTER MUST BE PLACED PRIOR TO APRON INSTALLATION.
- ② PERIMETER GROUT NOT SHOWN. SEE MN/DOT STANDARD PLATE 4026.
- ③ FEATHER MILL SHALL BE PAID PER ITEM 2232 MILL BITUMINOUS SURFACE. IN AREAS WHERE THE EXISTING BITUMINOUS CURB HAS ADEQUATE HEIGHT, AS DIRECTED BY THE ENGINEER, THE FEATHER MILL WILL NOT BE USED. THE ENGINEER WILL FIELD MARK THESE LOCATIONS.
- ④ SEE ① FOR DRIVEWAY CONSTRUCTION.
- ⑤ BITUMINOUS CURB SHALL BE PAID PER ITEM 2535-BITUMINOUS CURB (MODIFIED).

DATE	REVISION
6/3/22	ADDENDUM NO. 1 ADDED DETAIL 5

I hereby certify that this plan, specification, or report was prepared by me or under my direct supervision and that I am a duly Licensed Professional Engineer under the laws of the State of Minnesota.

*Craig J. Jochum*  
CRAIG J. JOCHUM, P.E.  
Date 5/23/22 Lic. No. 23461

DESIGNED BY:  
CJJ

DRAWN BY:  
SGJ

CHECKED BY:  
TAE



**Hakanson Anderson**  
Civil Engineers and Land Surveyors  
3601 Thurston Ave., Anoka, Minnesota 55303  
763-427-5860 FAX 763-427-0520  
www.hakanson-anderson.com

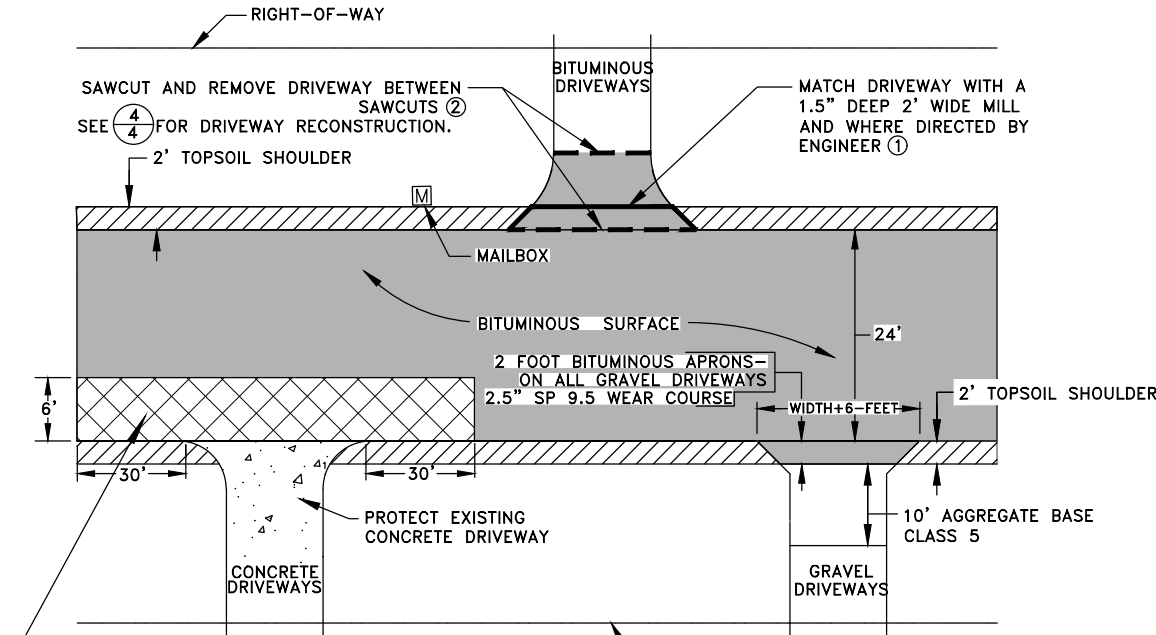
**2022 STREET SURFACE IMPROVEMENT PROJECT**

**TYPICAL SECTIONS AND DETAILS**

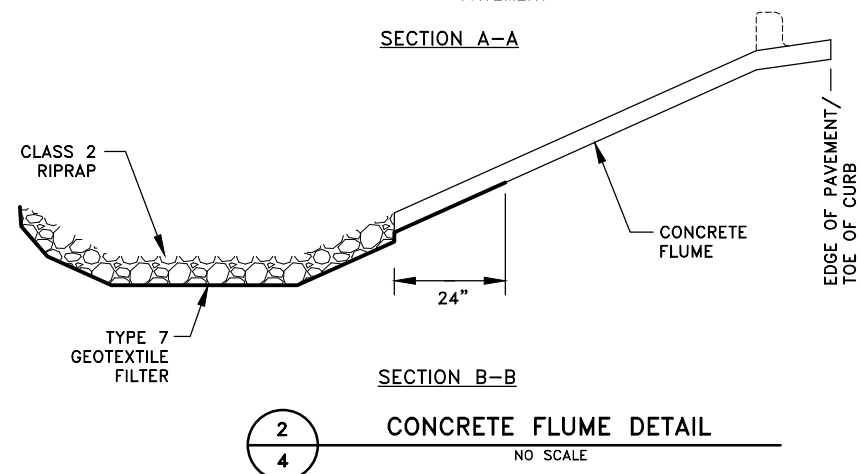
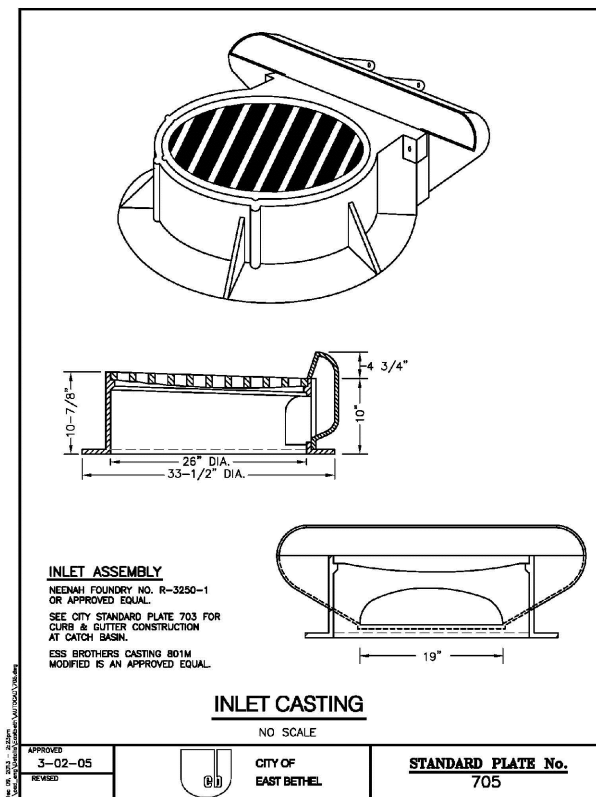
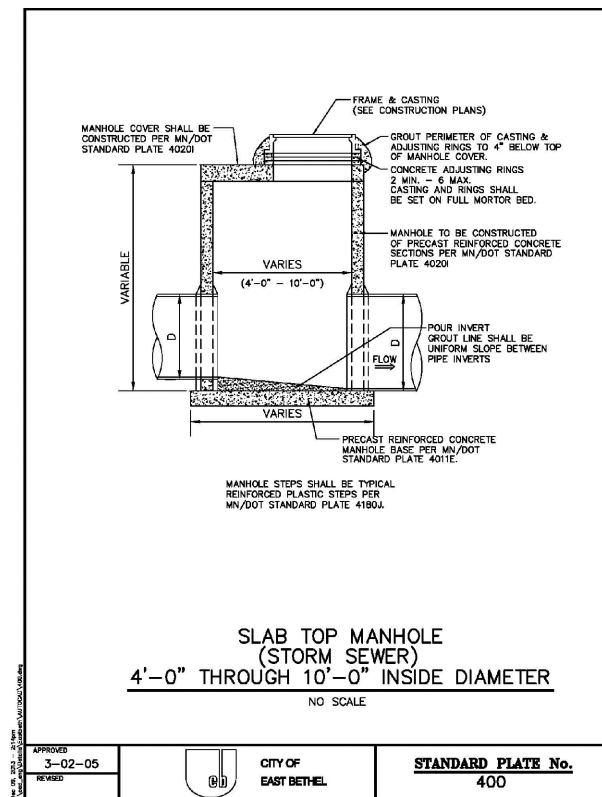
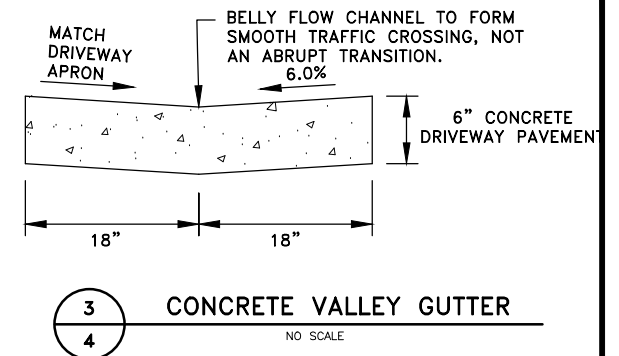
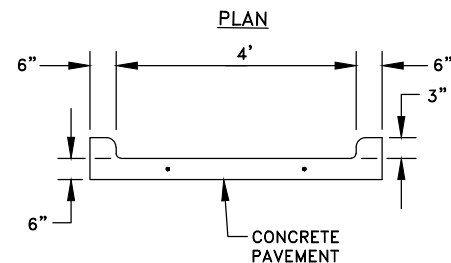
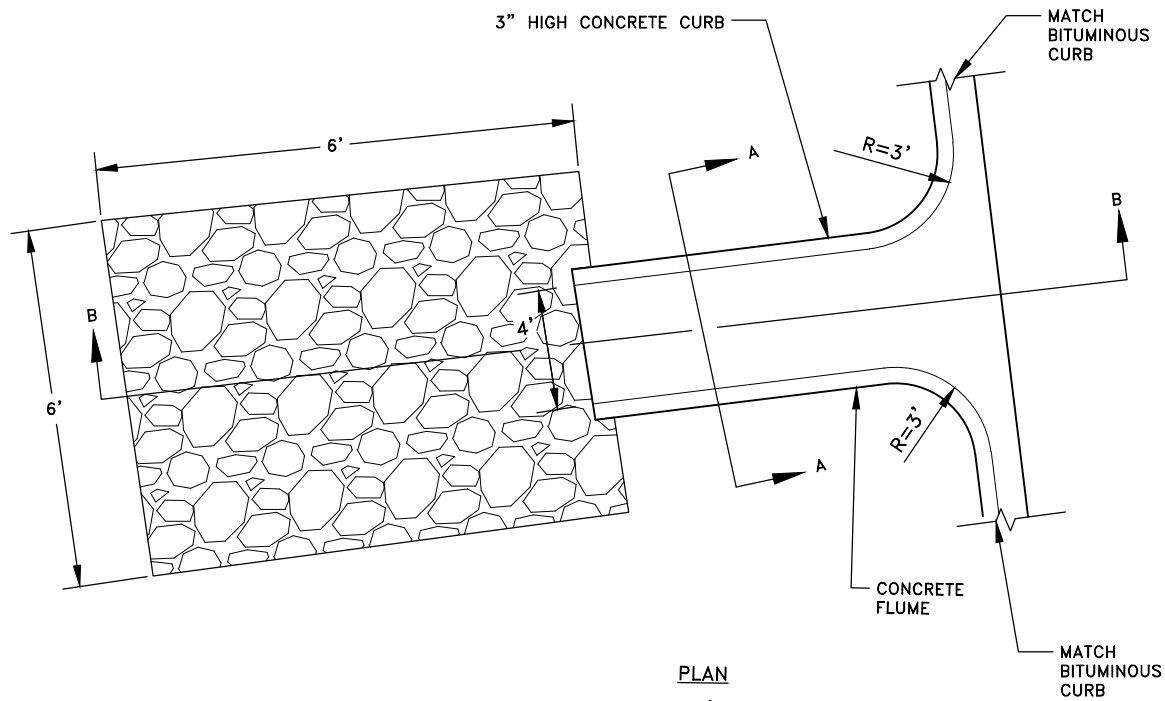
**EAST BETHEL, MINNESOTA**

SHEET  
3  
OF  
19  
SHEETS





1 TYPICAL OVERLAY DRIVEWAY RURAL SECTION CONSTRUCTION  
NO SCALE



#### REFERENCE NOTES:

- IN THESE LOCATIONS CONTRACTOR WILL BE PAID ITEM 2232 MILL BITUMINOUS SURFACE 1.5\".
- IN THESE LOCATIONS THE CONTRACTOR WILL BE PAID FOR THE SAWCUT AND BITUMINOUS REMOVAL.
- REMOVAL AND DISPOSAL OF EXISTING SOIL TO CONSTRUCT PAVEMENT SECTION AS SHOWN SHALL BE INCIDENTAL. THE BITUMINOUS AND CLASS 5 WILL BE PAID PER THE ITEMS ON THE BID FORM.

Jun 03, 2022 - 2:32pm  
K:\MUNICIPAL\EB358\ENGINEERING\PLAN DWG\EB358\_DETAILS.dwg

DATE	REVISION

I hereby certify that this plan, specification, or report was prepared by me or under my direct supervision and that I am a duly Licensed Professional Engineer under the laws of the State of Minnesota.

CRAIG J. JOCHUM, P.E.  
Date 5/23/22 Lic. No. 23461

DESIGNED BY:  
CJJ

DRAWN BY:  
SGJ

CHECKED BY:  
TAE



**Hakanson Anderson**  
Civil Engineers and Land Surveyors  
3601 Thurston Ave., Anoka, Minnesota 55303  
763-427-5860 FAX 763-427-0520  
www.hakanson-anderson.com

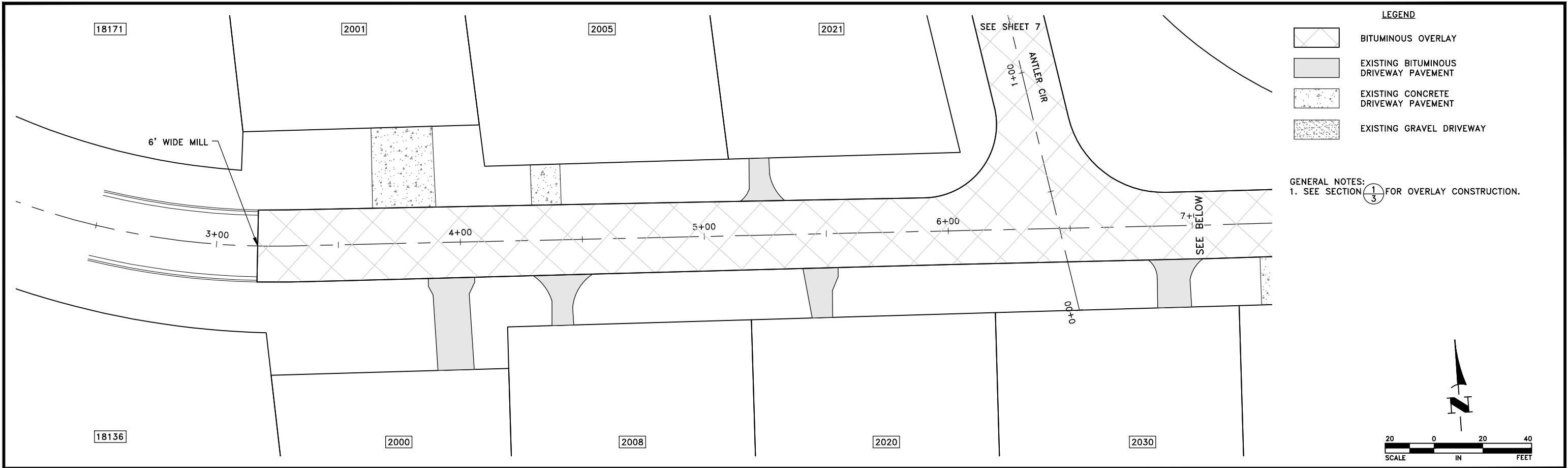
2022 STREET SURFACE IMPROVEMENT  
PROJECT

DETAILS  
EAST BETHEL, MINNESOTA

SHEET  
4  
OF  
19  
SHEETS

EB358

Jun 03, 2022 - 2:33pm  
K:\MUNICIPAL\EB358\ENGINEERING\PLAN DWG\EB358\_PINE GROVE ESTATES PP.dwg

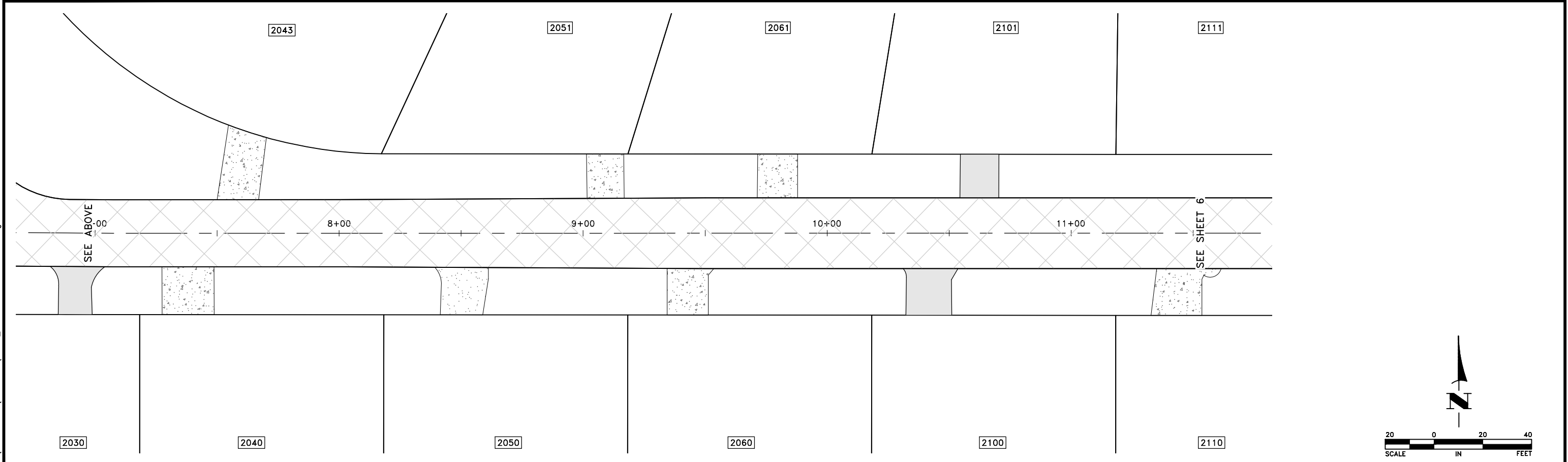


**LEGEND**

- BITUMINOUS OVERLAY
- EXISTING BITUMINOUS DRIVEWAY PAVEMENT
- EXISTING CONCRETE DRIVEWAY PAVEMENT
- EXISTING GRAVEL DRIVEWAY

**GENERAL NOTES:**  
1. SEE SECTION  $\frac{1}{3}$  FOR OVERLAY CONSTRUCTION.

SCALE: 0 20 40  
IN FEET



SCALE: 0 20 40  
IN FEET

DATE	REVISION

I hereby certify that this plan, specification, or report was prepared by me or under my direct supervision and that I am a duly Licensed Professional Engineer under the laws of the State of Minnesota.

CRAIG U. JOCHEM, P.E.  
Date 5/23/22 Lic. No. 23461

DESIGNED BY:  
CJJ

DRAWN BY:  
SGJ

CHECKED BY:  
TAE

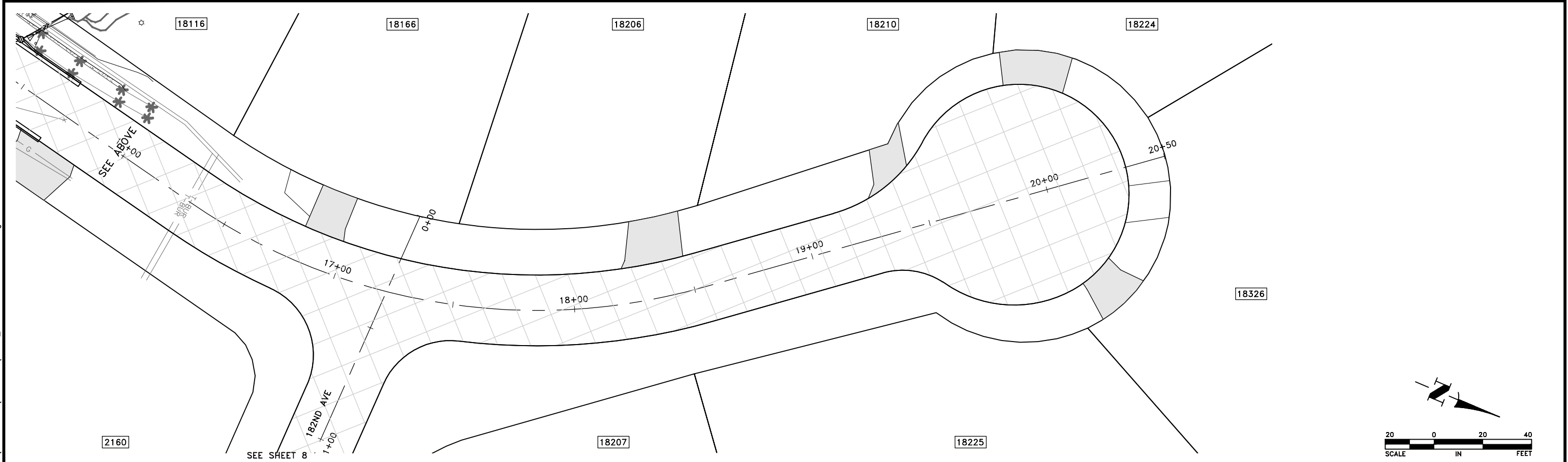
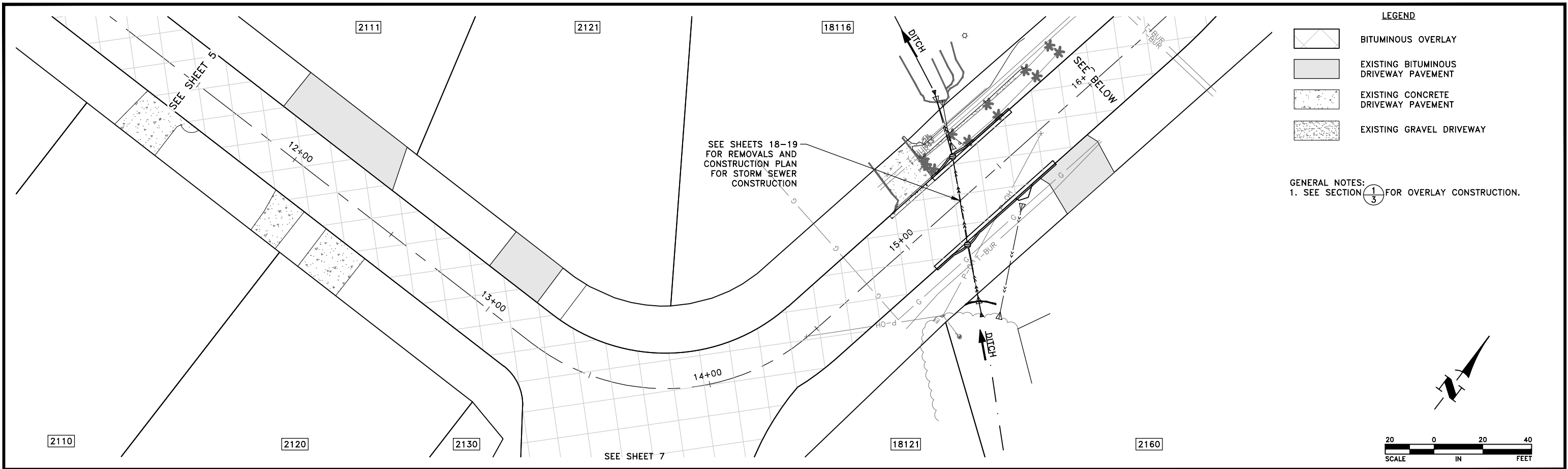
**Hakanson Anderson**  
Civil Engineers and Land Surveyors  
3601 Thurston Ave., Anoka, Minnesota 55303  
763-427-5860 FAX 763-427-0520  
www.hakanson-anderson.com

**2022 STREET SURFACE IMPROVEMENT  
PROJECT**

**CONSTRUCTION PLANS**  
  
DEERWOOD LANE  
EAST BETHEL, MINNESOTA

SHEET  
5  
OF  
19  
SHEETS

Jun 03, 2022 - 2:33pm  
K:\MUNICIPAL\EB358\ENGINEERING\PLAN DWG\EB358\_PINE GROVE ESTATES PP.dwg



DATE	REVISION

I hereby certify that this plan, specification, or report was prepared by me or under my direct supervision and that I am a duly Licensed Professional Engineer under the laws of the State of Minnesota.  
  
CRAIG U. JOCHUM, P.E.  
Date 5/23/22 Lic. No. 23461

DESIGNED BY:  
CJJ  
DRAWN BY:  
SGJ  
CHECKED BY:  
TAE



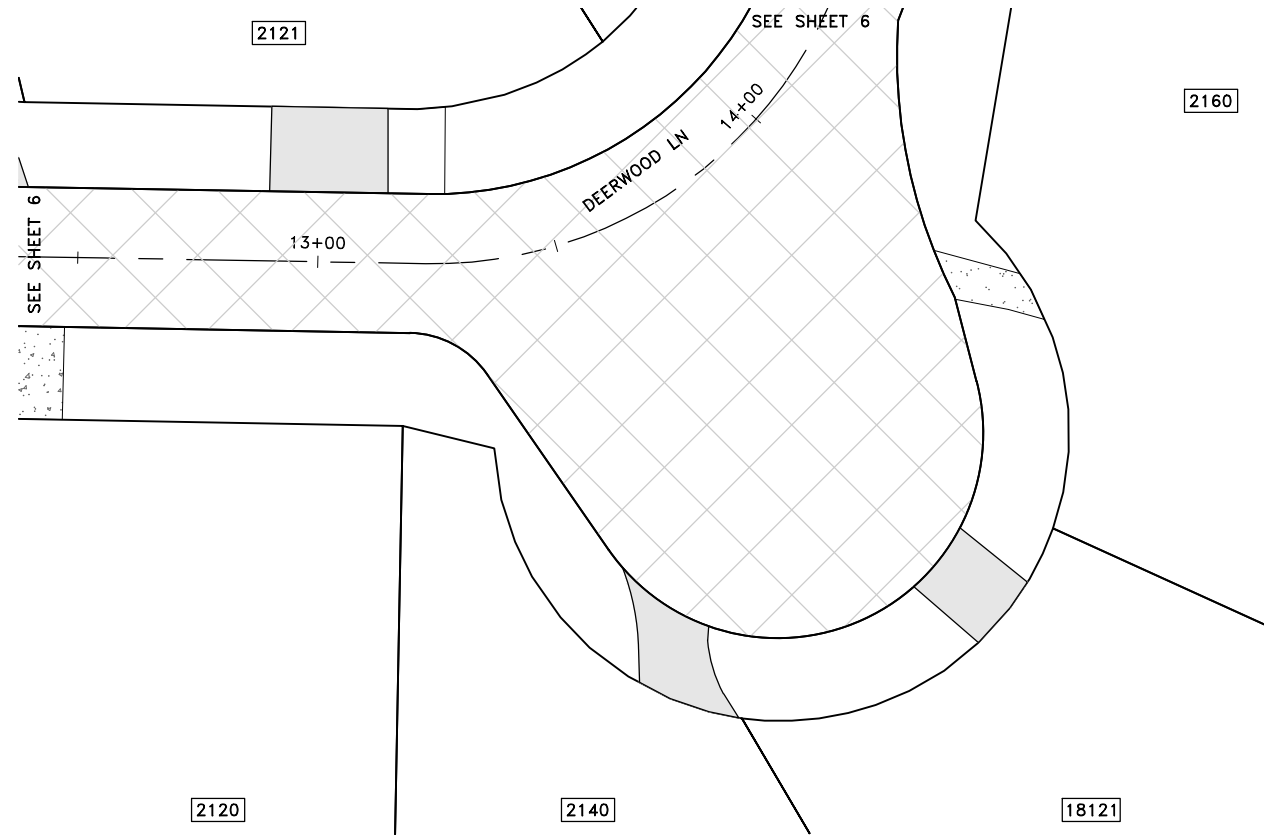
**Hakanson Anderson**  
Civil Engineers and Land Surveyors  
3601 Thurston Ave., Anoka, Minnesota 55303  
763-427-5860 FAX 763-427-0520  
www.hakanson-anderson.com

2022 STREET SURFACE IMPROVEMENT  
PROJECT

CONSTRUCTION PLANS  
DEERWOOD LANE  
EAST BETHEL, MINNESOTA

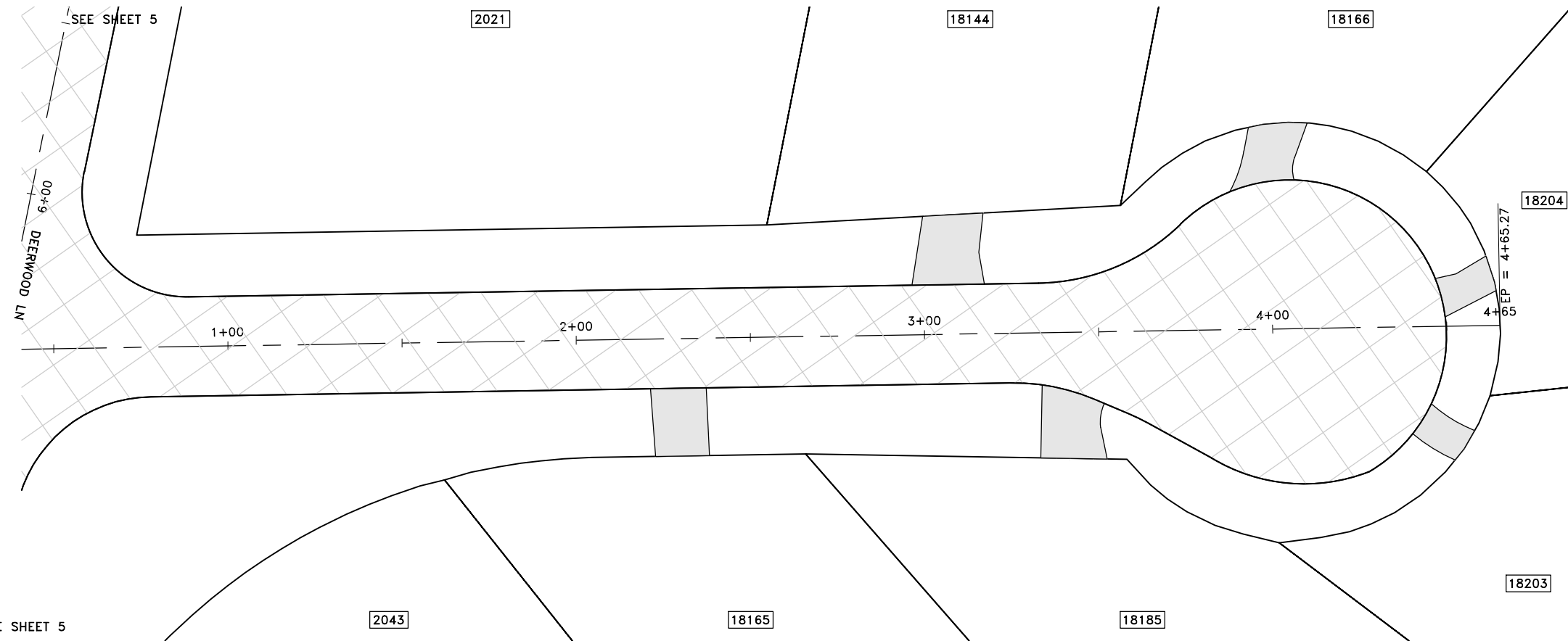
SHEET  
6  
OF  
19  
SHEETS

Jun 03, 2022 - 2:33pm  
K:\MUNICIPAL\EB358\ENGINEERING\PLAN DWG\EB358\_PINE GROVE ESTATES PP.dwg



LEGEND	
	BITUMINOUS OVERLAY
	EXISTING BITUMINOUS DRIVEWAY PAVEMENT
	EXISTING CONCRETE DRIVEWAY PAVEMENT
	EXISTING GRAVEL DRIVEWAY

GENERAL NOTES:  
1. SEE SECTION  $\frac{1}{3}$  FOR OVERLAY CONSTRUCTION.



DATE	REVISION

I hereby certify that this plan, specification, or report was prepared by me or under my direct supervision and that I am a duly Licensed Professional Engineer under the laws of the State of Minnesota.  
  
CRAIG V. JOCHEM, P.E.  
Date 5/23/22 Lic. No. 23461

DESIGNED BY:  
CJJ  
DRAWN BY:  
SGJ  
CHECKED BY:  
TAE



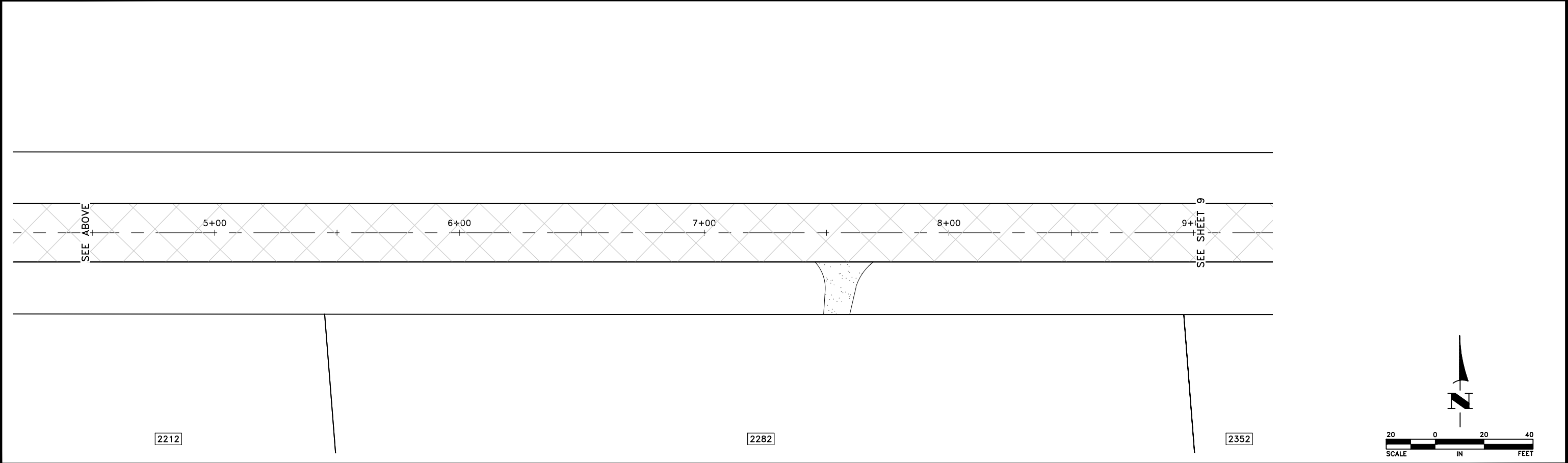
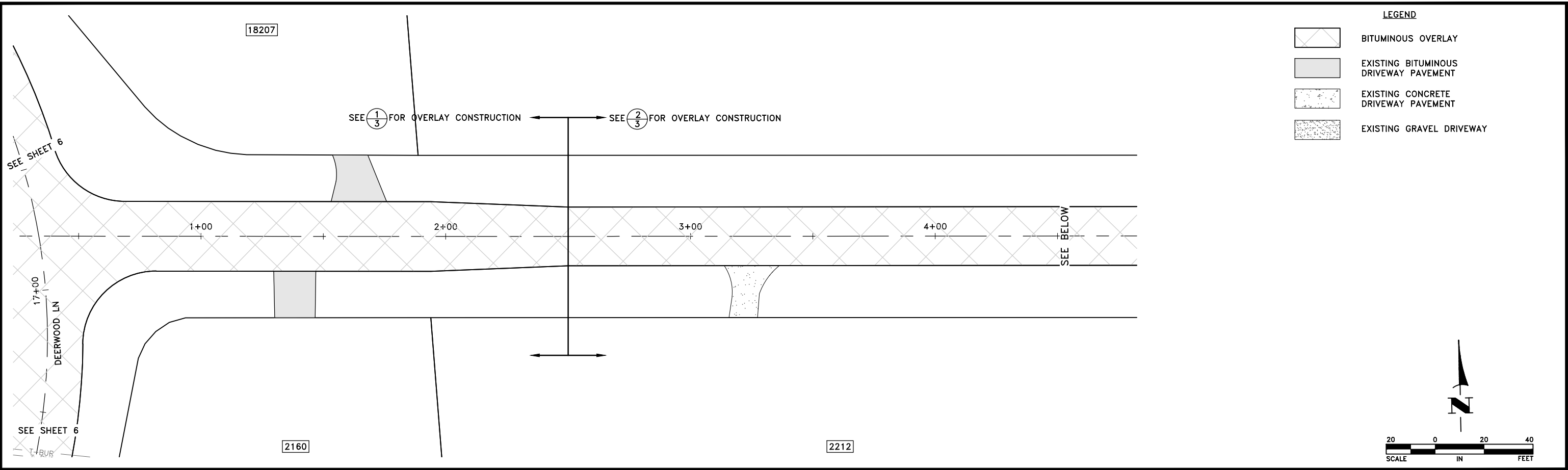
**Hakanson Anderson**  
Civil Engineers and Land Surveyors  
3601 Thurston Ave., Anoka, Minnesota 55303  
763-427-5860 FAX 763-427-0520  
www.hakanson-anderson.com

2022 STREET SURFACE IMPROVEMENT  
PROJECT

CONSTRUCTION PLANS  
DEERWOOD CUL-DE-SAC, 182ND AVE,  
AND ANTLER CIR  
EAST BETHEL, MINNESOTA

SHEET  
7  
OF  
19  
SHEETS

Jun 03, 2022 - 2:33pm  
K:\MUNICIPAL\EB358\ENGINEERING\PLAN DWG\EB358\_PINE GROVE ESTATES PP.dwg



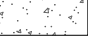
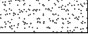


DATE	REVISION	I hereby certify that this plan, specification, or report was prepared by me or under my direct supervision and that I am a duly Licensed Professional Engineer under the laws of the State of Minnesota.  CRAIG U. JOCHUM, P.E. Date 5/23/22 Lic. No. 23461		DESIGNED BY: CJJ DRAWN BY: SGJ CHECKED BY: TAE		Hakanson Anderson Civil Engineers and Land Surveyors 3601 Thurston Ave., Anoka, Minnesota 55303 763-427-5860 FAX 763-427-0520 www.hakanson-anderson.com	2022 STREET SURFACE IMPROVEMENT PROJECT	CONSTRUCTION PLANS  182ND AVENUE EAST BETHEL, MINNESOTA	SHEET 8 OF 19 SHEETS

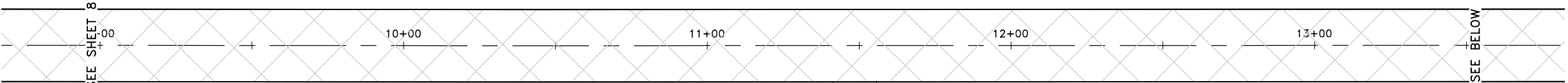
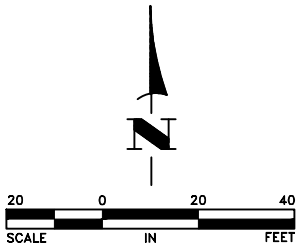
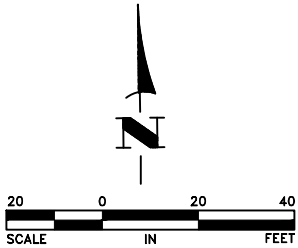


Jun 03, 2022 - 2:33pm  
K:\MUNICIPAL\EB358\ENGINEERING\PLAN DWG\EB358\_PINE GROVE ESTATES PP.dwg

LEGEND

-  BITUMINOUS OVERLAY
-  EXISTING BITUMINOUS DRIVEWAY PAVEMENT
-  EXISTING CONCRETE DRIVEWAY PAVEMENT
-  EXISTING GRAVEL DRIVEWAY

GENERAL NOTES:  
1. SEE SECTION  $\frac{2}{3}$  FOR OVERLAY CONSTRUCTION.

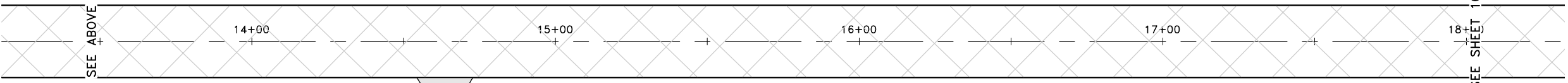


2282

2352

2362

18226

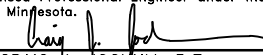


2362

2454

DATE	REVISION

I hereby certify that this plan, specification, or report was prepared by me or under my direct supervision and that I am a duly Licensed Professional Engineer under the laws of the State of Minnesota.

  
CRAIG U. JOCHUM, P.E.  
Date 5/23/22 Lic. No. 23461

DESIGNED BY:  
CJJ

DRAWN BY:  
SGJ

CHECKED BY:  
TAE



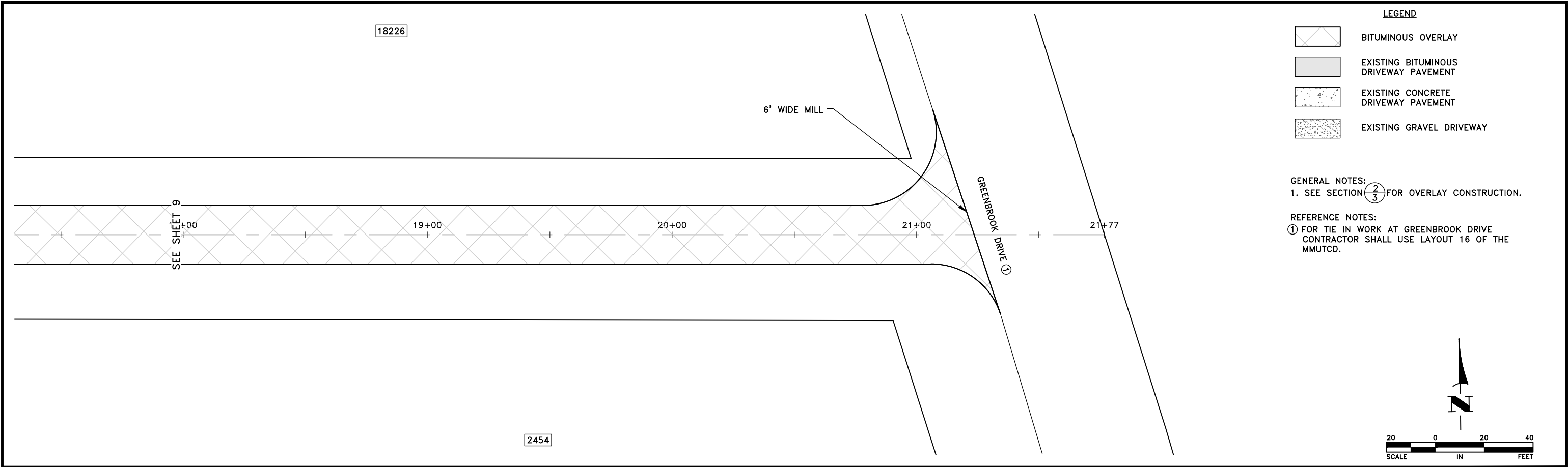
**Hakanson Anderson**  
Civil Engineers and Land Surveyors  
3601 Thurston Ave., Anoka, Minnesota 55303  
763-427-5860 FAX 763-427-0520  
www.hakanson-anderson.com

2022 STREET SURFACE IMPROVEMENT  
PROJECT

CONSTRUCTION PLANS  
  
182ND AVENUE  
EAST BETHEL, MINNESOTA

SHEET  
9  
OF  
19  
SHEETS

K:\MUNICIPAL\EB358\ENGINEERING\PLAN DWG\EB358\_PINE GROVE ESTATES PP.dwg Jun 06, 2022 - 10:48am

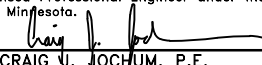


- LEGEND
- BITUMINOUS OVERLAY
  - EXISTING BITUMINOUS DRIVEWAY PAVEMENT
  - EXISTING CONCRETE DRIVEWAY PAVEMENT
  - EXISTING GRAVEL DRIVEWAY

- GENERAL NOTES:
1. SEE SECTION  $\frac{2}{3}$  FOR OVERLAY CONSTRUCTION.
- REFERENCE NOTES:
- ① FOR TIE IN WORK AT GREENBROOK DRIVE CONTRACTOR SHALL USE LAYOUT 16 OF THE MMUTCD.

DATE	REVISION
6/3/22	ADDENDUM NO. 1 ADD REF NOTE 1

I hereby certify that this plan, specification, or report was prepared by me or under my direct supervision and that I am a duly Licensed Professional Engineer under the laws of the State of Minnesota.

  
CRAIG U. JOCHUM, P.E.  
Date 5/23/22 Lic. No. 23461

DESIGNED BY: CJJ
DRAWN BY: SGJ
CHECKED BY: TAE



**Hakanson Anderson**  
Civil Engineers and Land Surveyors  
3601 Thurston Ave., Anoka, Minnesota 55303  
763-427-5860 FAX 763-427-0520  
www.hakanson-anderson.com

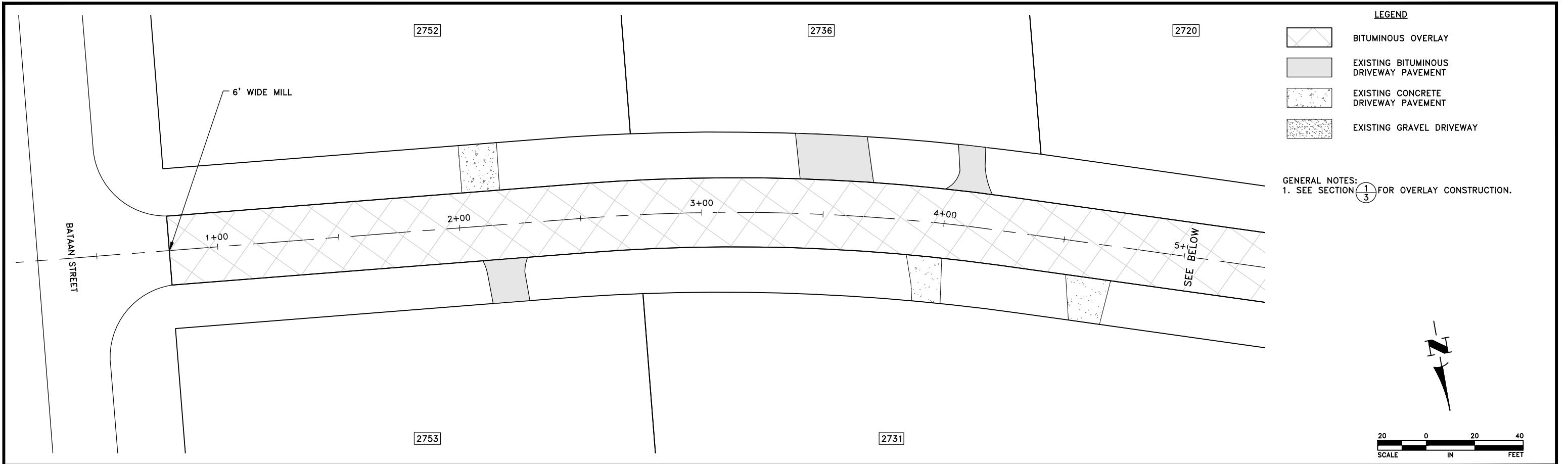
2022 STREET SURFACE IMPROVEMENT PROJECT

CONSTRUCTION PLANS

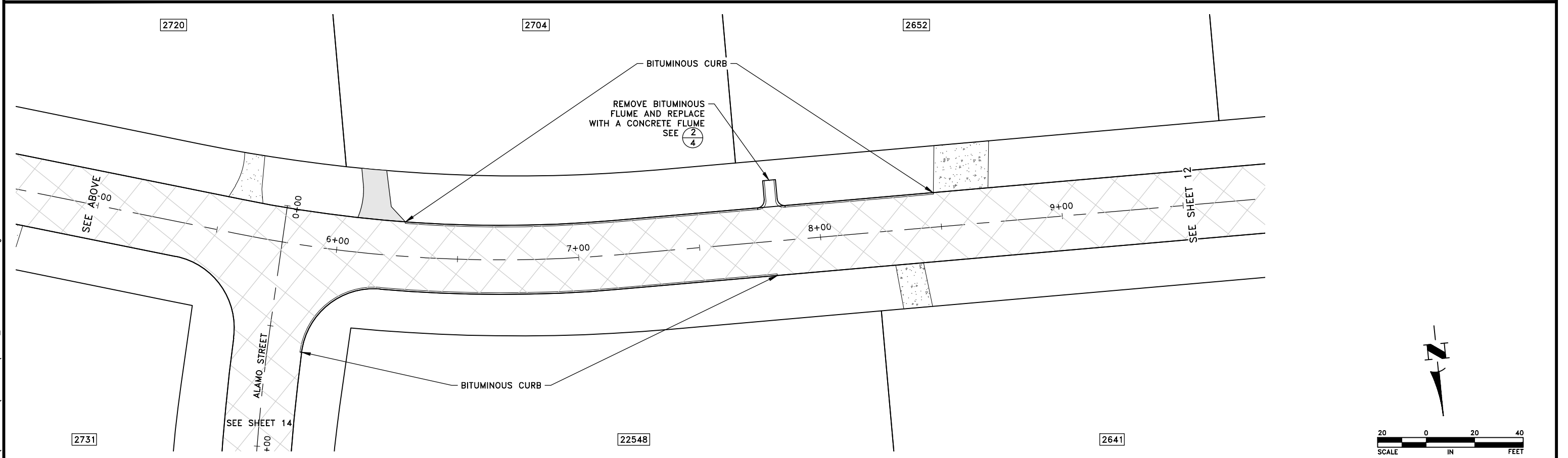
182ND AVENUE  
EAST BETHEL, MINNESOTA

SHEET 10 OF 19 SHEETS

Jun 03, 2022 - 2:34pm  
K:\MUNICIPAL\EB358\ENGINEERING\PLAN DWG\EB358\_SHAWNEE\_WOODS\_PP.dwg



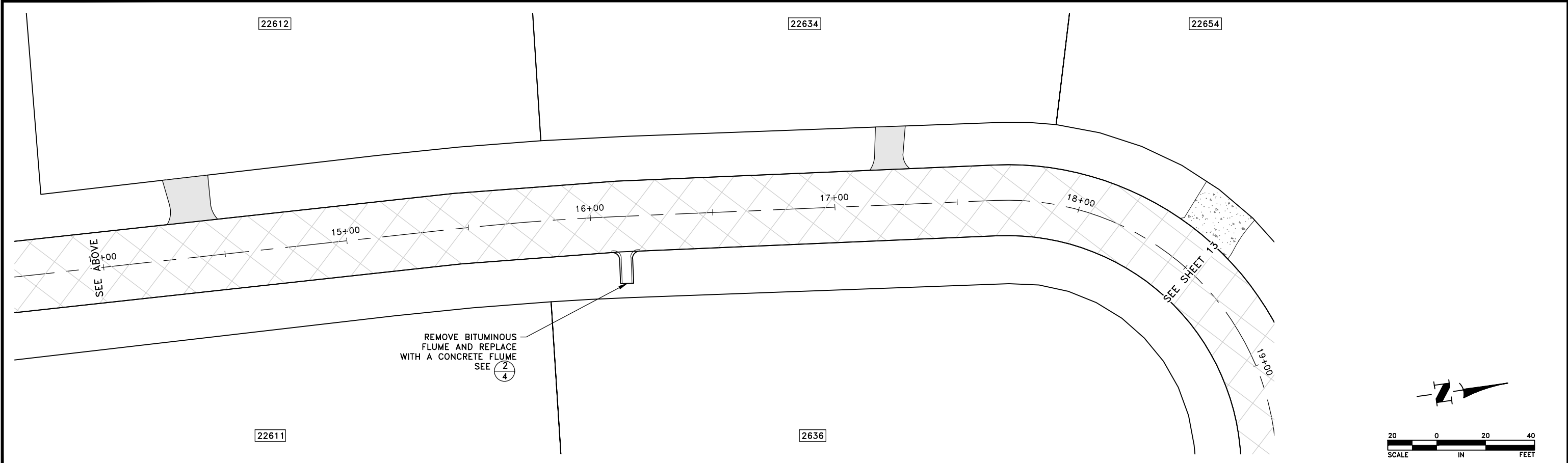
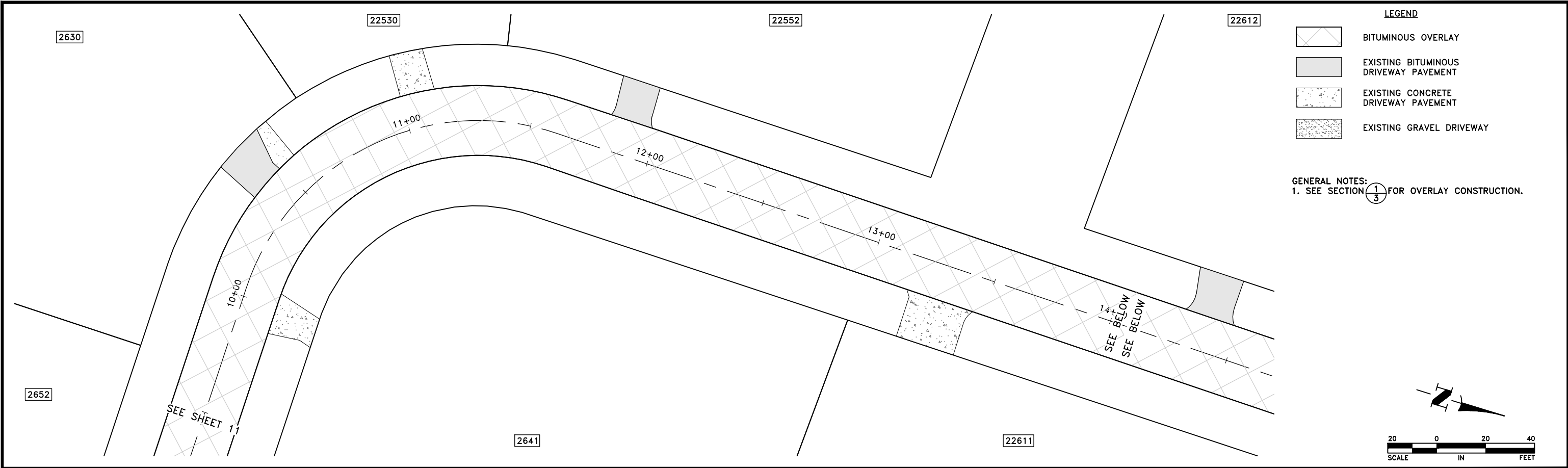
- LEGEND**
- BITUMINOUS OVERLAY
  - EXISTING BITUMINOUS DRIVEWAY PAVEMENT
  - EXISTING CONCRETE DRIVEWAY PAVEMENT
  - EXISTING GRAVEL DRIVEWAY
- GENERAL NOTES:**  
1. SEE SECTION  $\frac{1}{3}$  FOR OVERLAY CONSTRUCTION.



DATE	REVISION	I hereby certify that this plan, specification, or report was prepared by me or under my direct supervision and that I am a duly Licensed Professional Engineer under the laws of the State of Minnesota.		DESIGNED BY: CJJ		<b>Hakanson Anderson</b> Civil Engineers and Land Surveyors 3601 Thurston Ave., Anoka, Minnesota 55303 763-427-5860 FAX 763-427-0520 www.hakanson-anderson.com	2022 STREET SURFACE IMPROVEMENT PROJECT	CONSTRUCTION PLANS  225TH LANE EAST BETHEL, MINNESOTA	SHEET 11 OF 19 SHEETS
				DRAWN BY: SGJ					
				CHECKED BY: TAE					

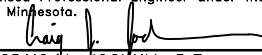
Date 5/23/22 CRAIG U. JOCHUM, P.E. Lic. No. 23461

Jun 03, 2022 - 2:34pm  
K:\MUNICIPAL\EB358\ENGINEERING\PLAN DWG\EB358\_SHAWNEE\_WOODS\_PP.dwg



DATE	REVISION

I hereby certify that this plan, specification, or report was prepared by me or under my direct supervision and that I am a duly Licensed Professional Engineer under the laws of the State of Minnesota.

  
CRAIG U. JOCHUM, P.E.  
Date 5/23/22 Lic. No. 23461

DESIGNED BY:  
CJJ

DRAWN BY:  
SGJ

CHECKED BY:  
TAE



**Hakanson Anderson**  
Civil Engineers and Land Surveyors  
3601 Thurston Ave., Anoka, Minnesota 55303  
763-427-5860 FAX 763-427-0520  
www.hakanson-anderson.com

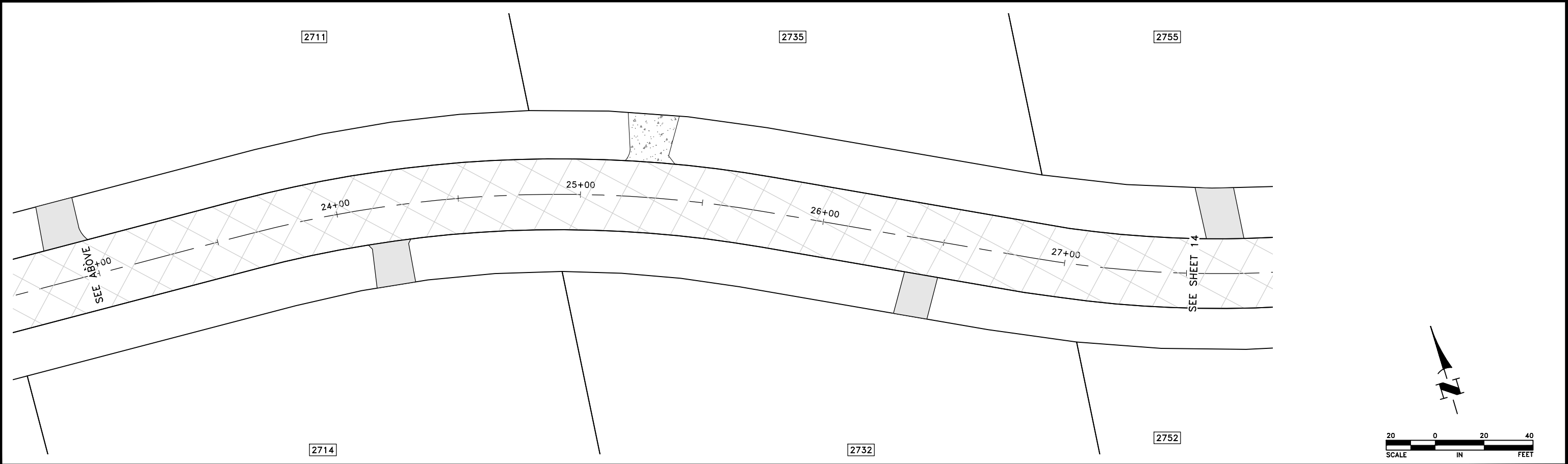
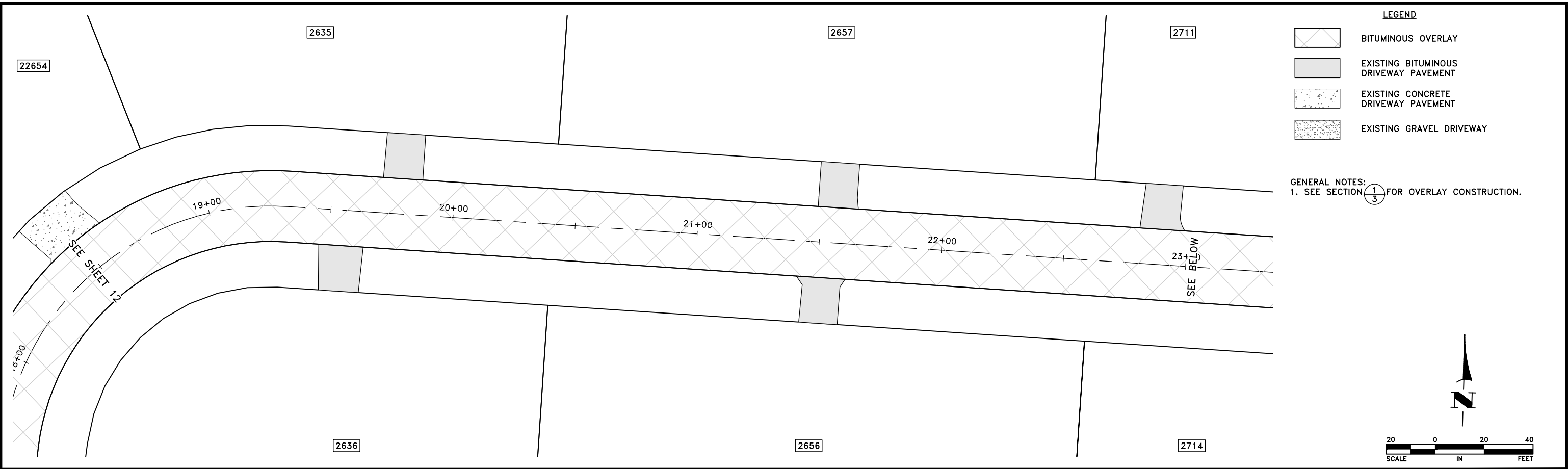
2022 STREET SURFACE IMPROVEMENT  
PROJECT

CONSTRUCTION PLANS  
225TH LANE AND YANCY STREET  
EAST BETHEL, MINNESOTA

SHEET  
12  
OF  
19  
SHEETS

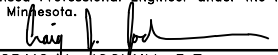


Jun 03, 2022 - 2:34pm  
K:\MUNICIPAL\EB358\ENGINEERING\PLAN DWG\EB358\_SHAWNEE\_WOODS\_PP.dwg



DATE	REVISION

I hereby certify that this plan, specification, or report was prepared by me or under my direct supervision and that I am a duly Licensed Professional Engineer under the laws of the State of Minnesota.

  
CRAIG U. JOCHUM, P.E.  
Date 5/23/22 Lic. No. 23461

DESIGNED BY:  
CJJ  
DRAWN BY:  
SGJ  
CHECKED BY:  
TAE



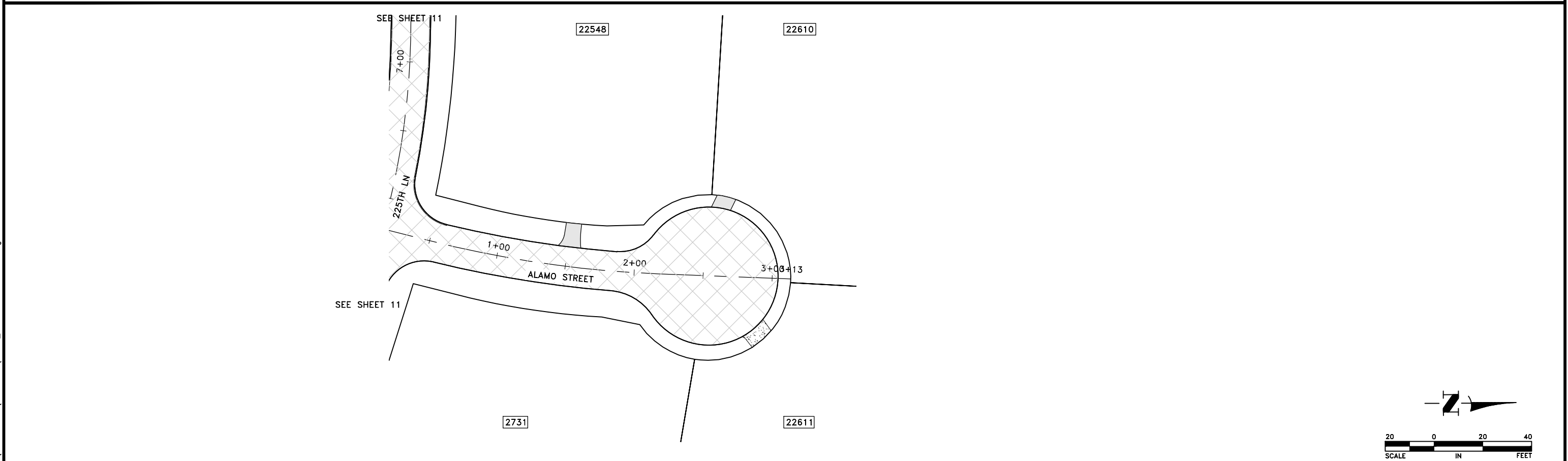
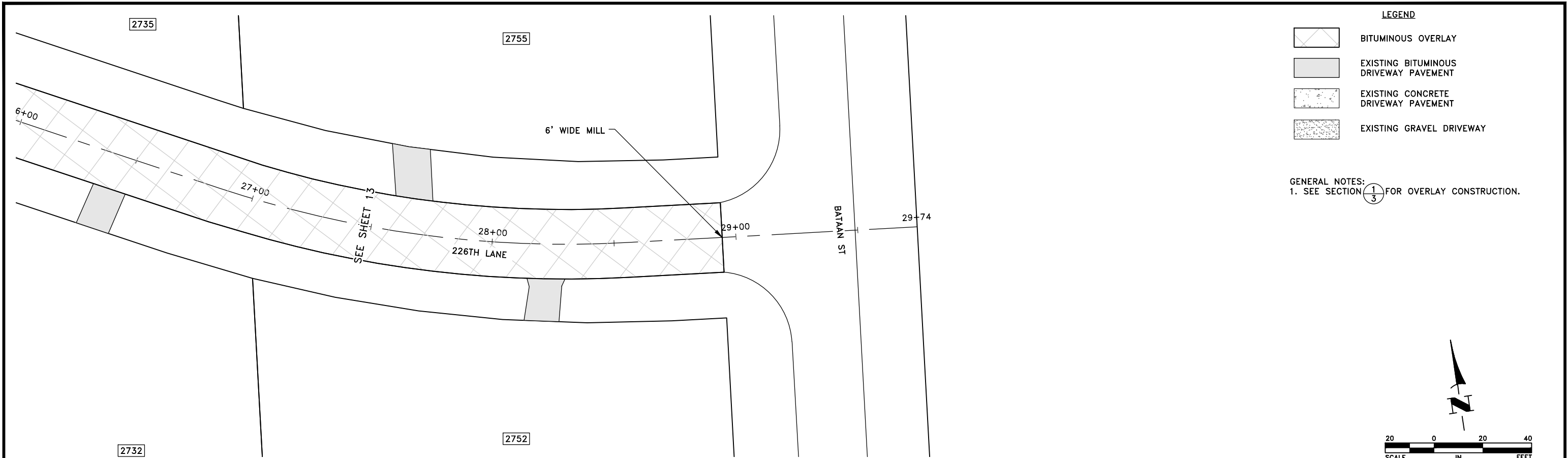
**Hakanson Anderson**  
Civil Engineers and Land Surveyors  
3601 Thurston Ave., Anoka, Minnesota 55303  
763-427-5860 FAX 763-427-0520  
www.hakanson-anderson.com

2022 STREET SURFACE IMPROVEMENT  
PROJECT

CONSTRUCTION PLANS  
YANCY STREET AND 226TH LANE  
EAST BETHEL, MINNESOTA

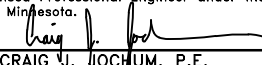
SHEET  
13  
OF  
19  
SHEETS

Jun 03, 2022 - 2:34pm  
K:\MUNICIPAL\EB358\ENGINEERING\PLAN DWG\EB358\_SHAWNEE\_WOODS\_PP.dwg



DATE	REVISION

I hereby certify that this plan, specification, or report was prepared by me or under my direct supervision and that I am a duly Licensed Professional Engineer under the laws of the State of Minnesota.

  
CRAIG U. JOCHUM, P.E.  
Date 5/23/22 Lic. No. 23461

DESIGNED BY:  
CJJ  
DRAWN BY:  
SGJ  
CHECKED BY:  
TAE



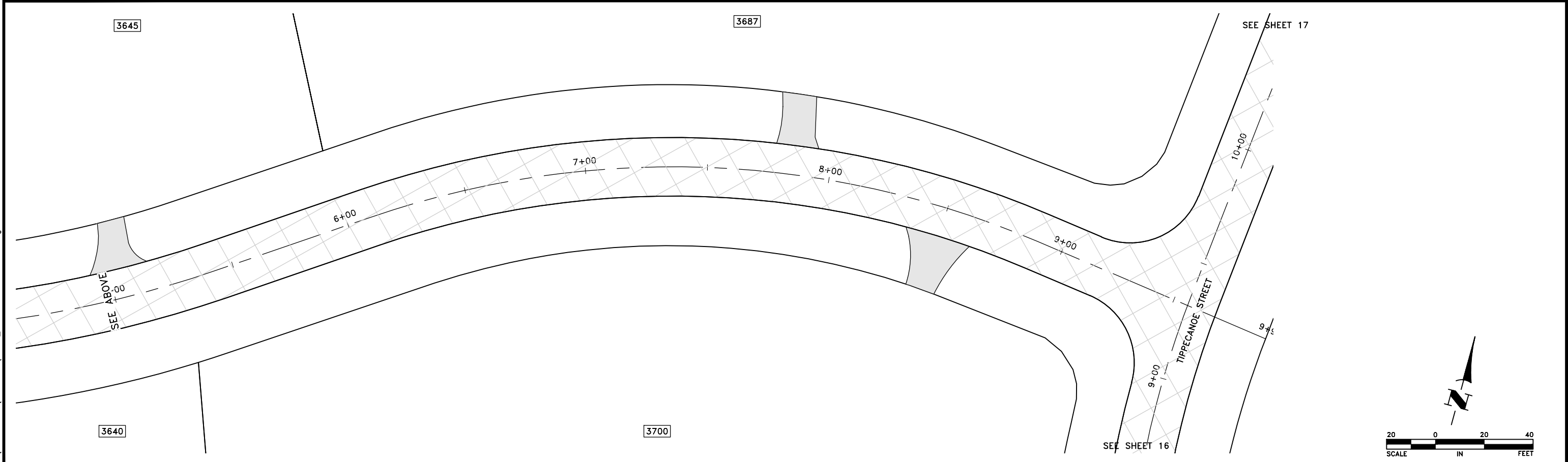
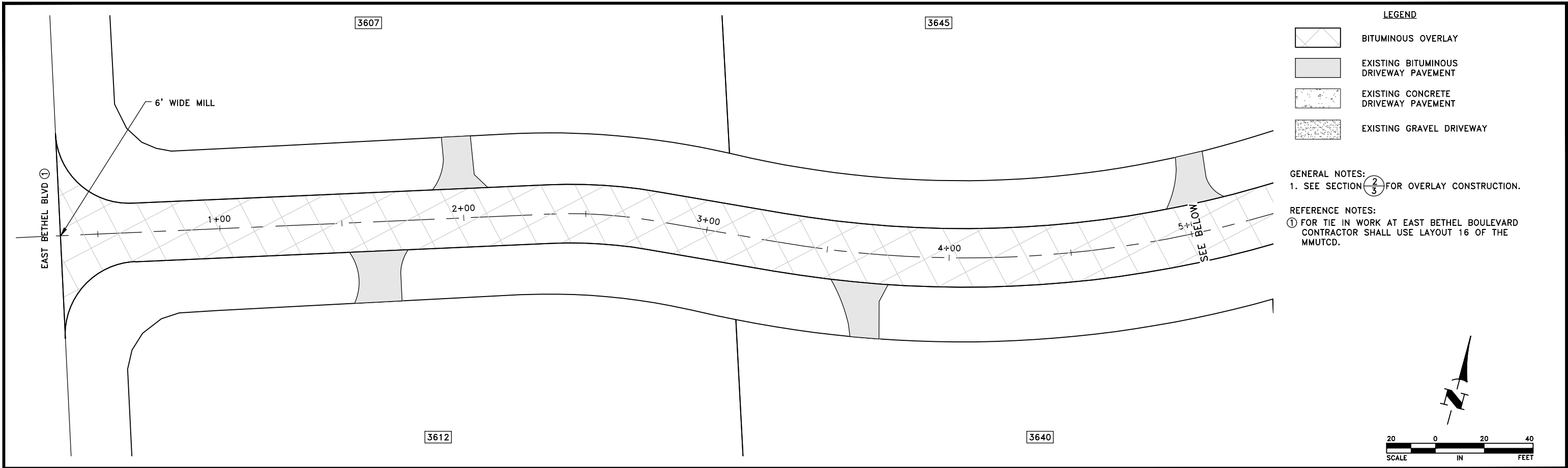
**Hakanson Anderson**  
Civil Engineers and Land Surveyors  
3601 Thurston Ave., Anoka, Minnesota 55303  
763-427-5860 FAX 763-427-0520  
www.hakanson-anderson.com

2022 STREET SURFACE IMPROVEMENT  
PROJECT

CONSTRUCTION PLANS  
226TH LANE AND ALAMO STREET  
EAST BETHEL, MINNESOTA

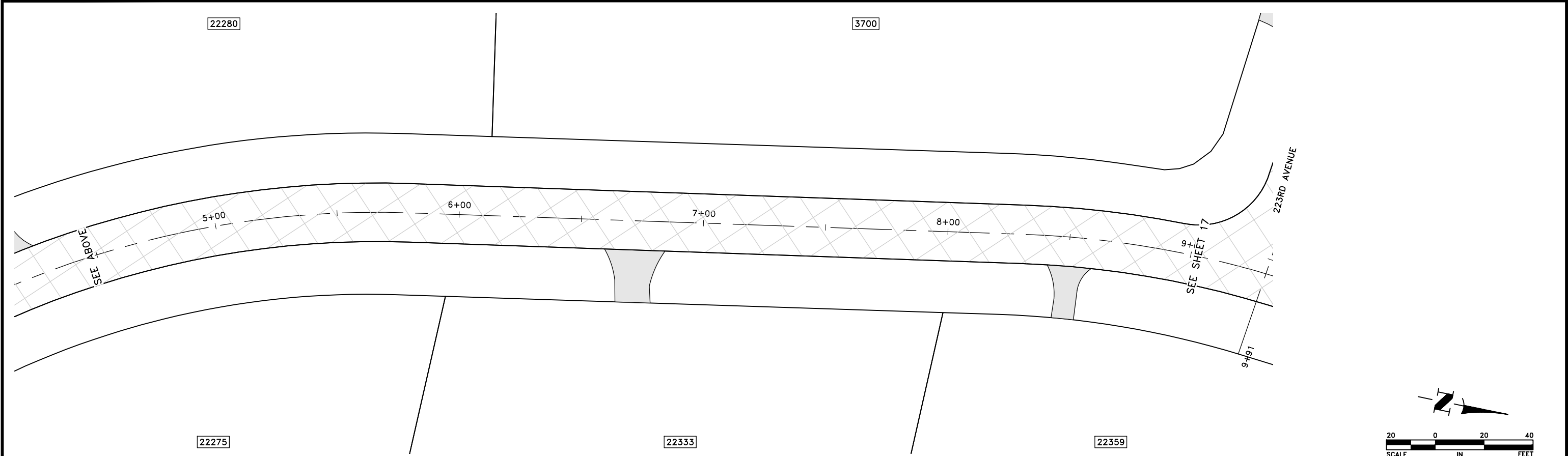
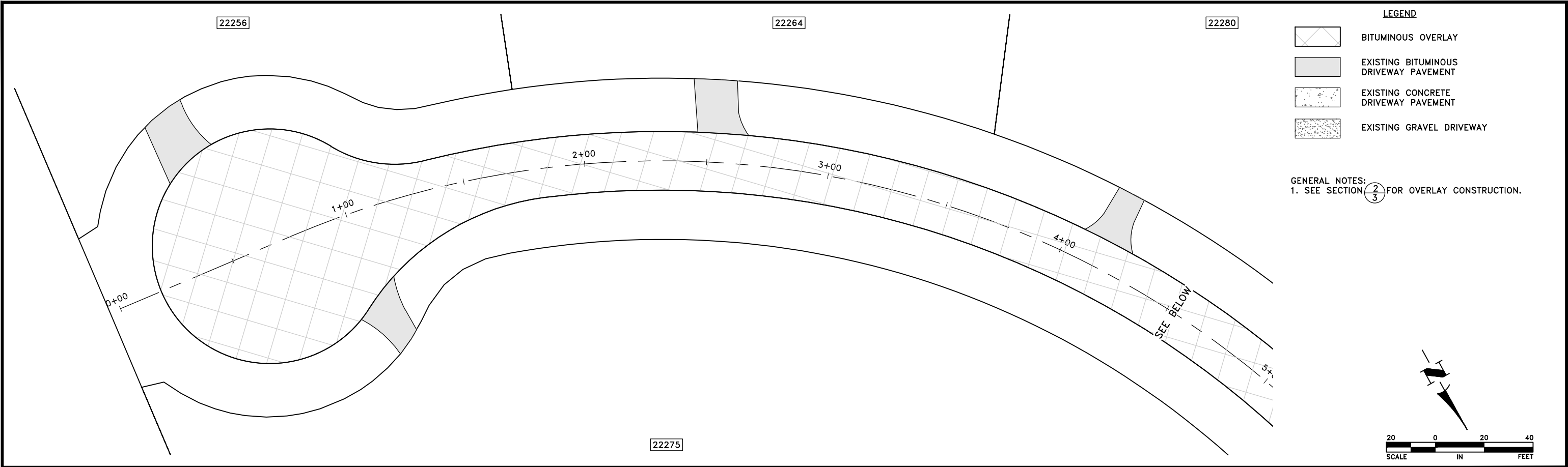
SHEET  
14  
OF  
19  
SHEETS

K:\MUNICIPAL\EB358\ENGINEERING\PLAN DWG\EB358\_SHENANDOAH RIDGE PP.dwg  
Jun 06, 2022 - 10:52am



DATE	REVISION	I hereby certify that this plan, specification, or report was prepared by me or under my direct supervision and that I am a duly Licensed Professional Engineer under the laws of the State of Minnesota.  CRAIG J. JOCHUM, P.E. Date 5/23/22 Lic. No. 23461		DESIGNED BY: CJJ DRAWN BY: SGJ CHECKED BY: TAE		Hakanson Anderson Civil Engineers and Land Surveyors 3601 Thurston Ave., Anoka, Minnesota 55303 763-427-5860 FAX 763-427-0520 www.hakanson-anderson.com	2022 STREET SURFACE IMPROVEMENT PROJECT	CONSTRUCTION PLANS  223RD AVENUE EAST BETHEL, MINNESOTA	SHEET 15 OF 19 SHEETS
6/3/22	ADDENDUM NO. 1 ADD REF NOTE 1								

Jun 03, 2022 - 2:35pm  
K:\MUNICIPAL\EB358\ENGINEERING\PLAN DWG\EB358\_SHENANDOAH RIDGE PP.dwg



DATE	REVISION

I hereby certify that this plan, specification, or report was prepared by me or under my direct supervision and that I am a duly Licensed Professional Engineer under the laws of the State of Minnesota.

*Craig J. Jochum*  
CRAIG J. JOCHUM, P.E.  
Date 5/23/22 Lic. No. 23461

DESIGNED BY:  
CJJ  
DRAWN BY:  
SGJ  
CHECKED BY:  
TAE



**Hakanson Anderson**  
Civil Engineers and Land Surveyors  
3601 Thurston Ave., Anoka, Minnesota 55303  
763-427-5860 FAX 763-427-0520  
www.hakanson-anderson.com

2022 STREET SURFACE IMPROVEMENT  
PROJECT

CONSTRUCTION PLANS  
TIPPECANOE STREET  
EAST BETHEL, MINNESOTA

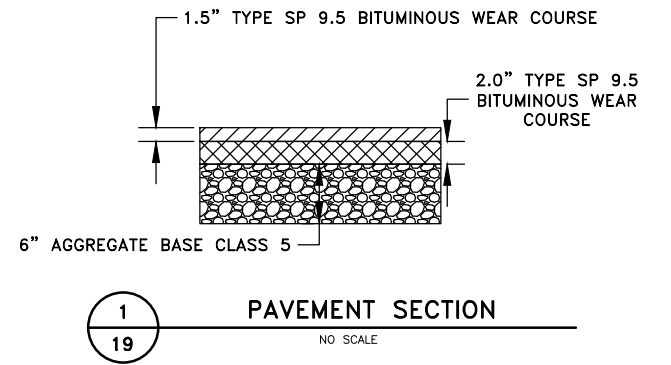
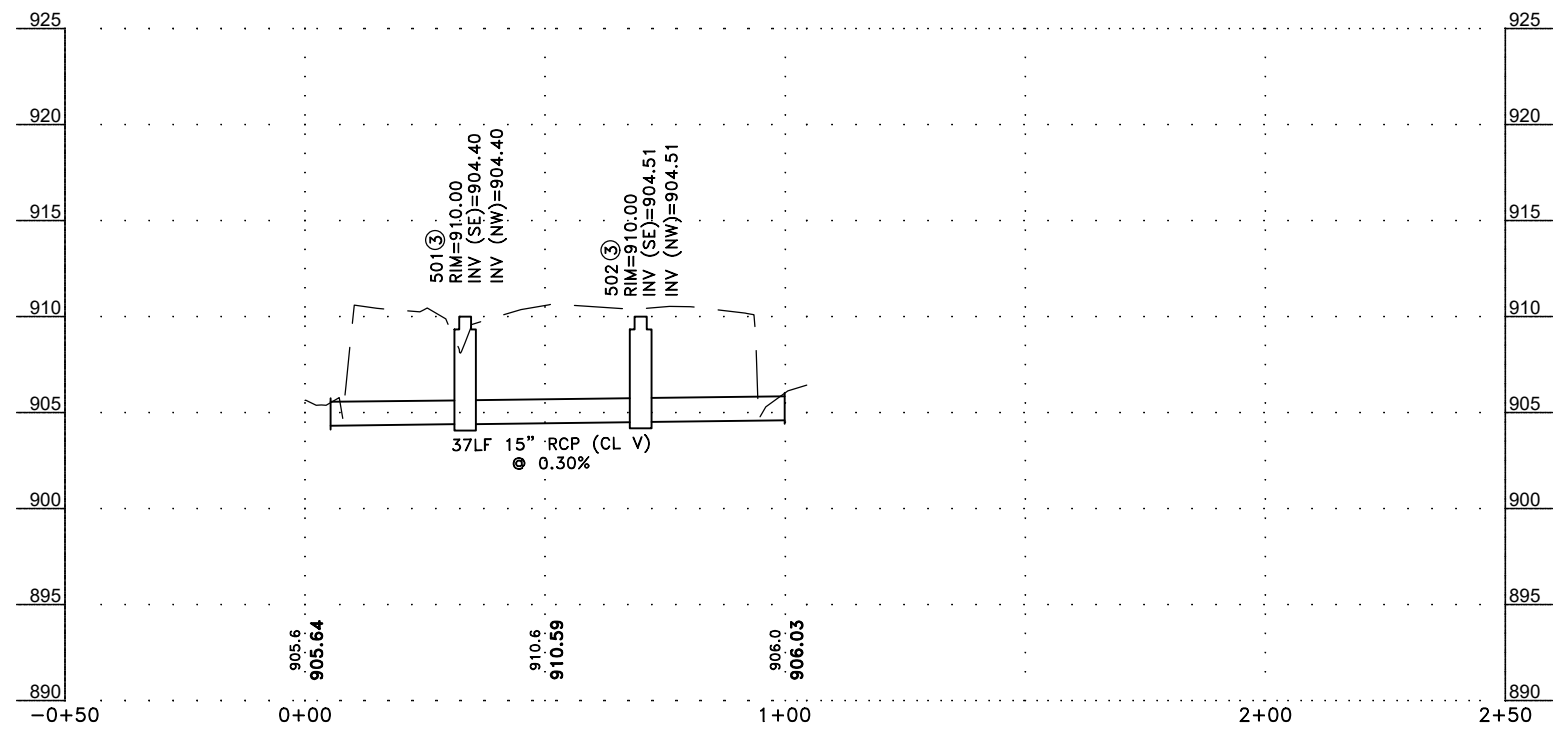
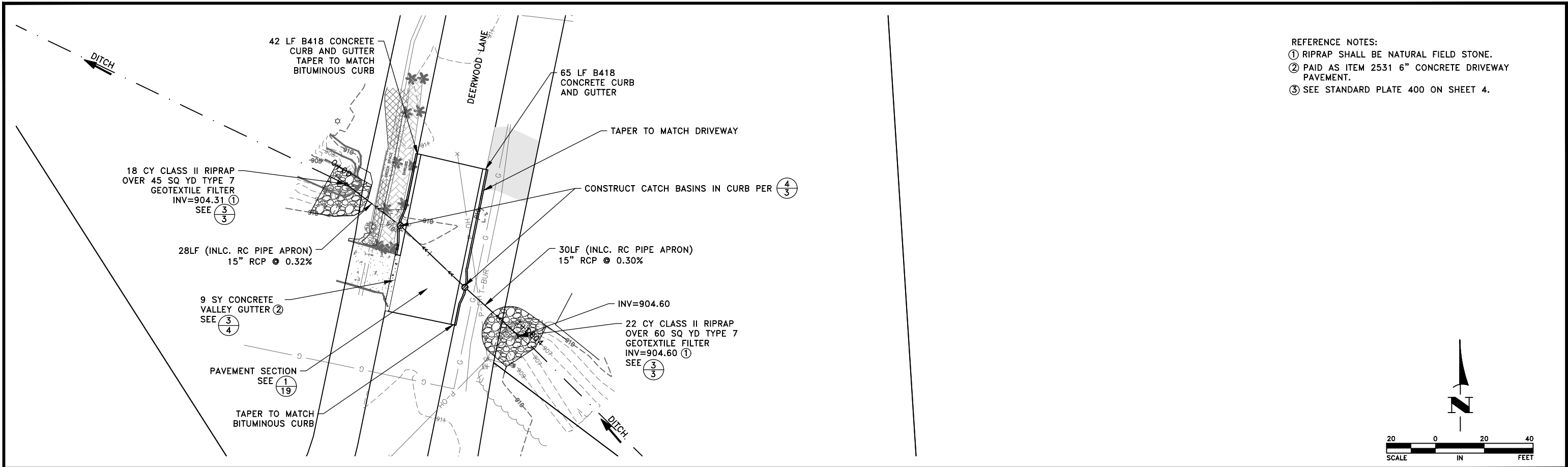
SHEET  
16  
OF  
19  
SHEETS







Jun 03, 2022 - 2:35pm  
K:\MUNICIPAL\EB358\ENGINEERING\PLAN DWG\EB358\_DEERWOOD DITCH PROPOSED.dwg



DATE	REVISION
6/3/22	ADDENDUM NO. 1 ADDED UTILITIES

I hereby certify that this plan, specification, or report was prepared by me or under my direct supervision and that I am a duly Licensed Professional Engineer under the laws of the State of Minnesota.

CRAIG J. JOGHUM, P.E.  
Date 5/23/22 Lic. No. 23461

DESIGNED BY:  
CJJ

DRAWN BY:  
SGJ

CHECKED BY:  
TAE



**Hakanson Anderson**  
Civil Engineers and Land Surveyors  
3601 Thurston Ave., Anoka, Minnesota 55303  
763-427-5860 FAX 763-427-0520  
www.hakanson-anderson.com

2022 STREET SURFACE IMPROVEMENT  
PROJECT

DEERWOOD LANE STORM SEWER  
CONSTRUCTION PLAN  
EAST BETHEL, MINNESOTA

SHEET  
19  
OF  
19  
SHEETS

EB358