

WATERMARK - 6TH ADDITION

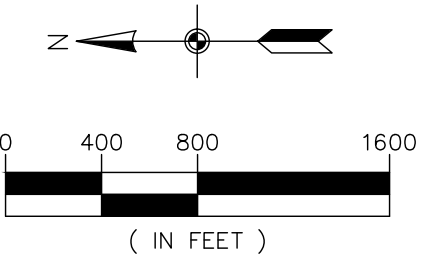
CONSTRUCTION PLANS FOR TURN LANES INCLUDING; GRADING, STORM SEWER, STREETS, SIGNING AND STRIPING LINO LAKES, MINNESOTA



APPROVED: ANOKA COUNTY ENGINEER DATE

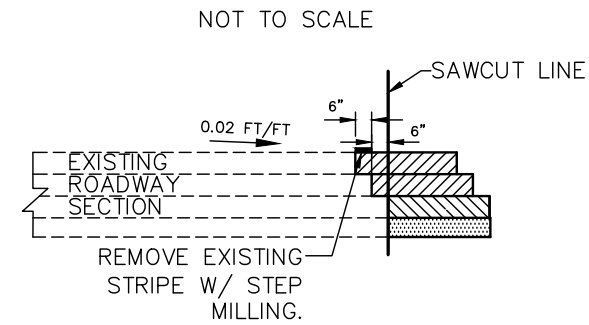
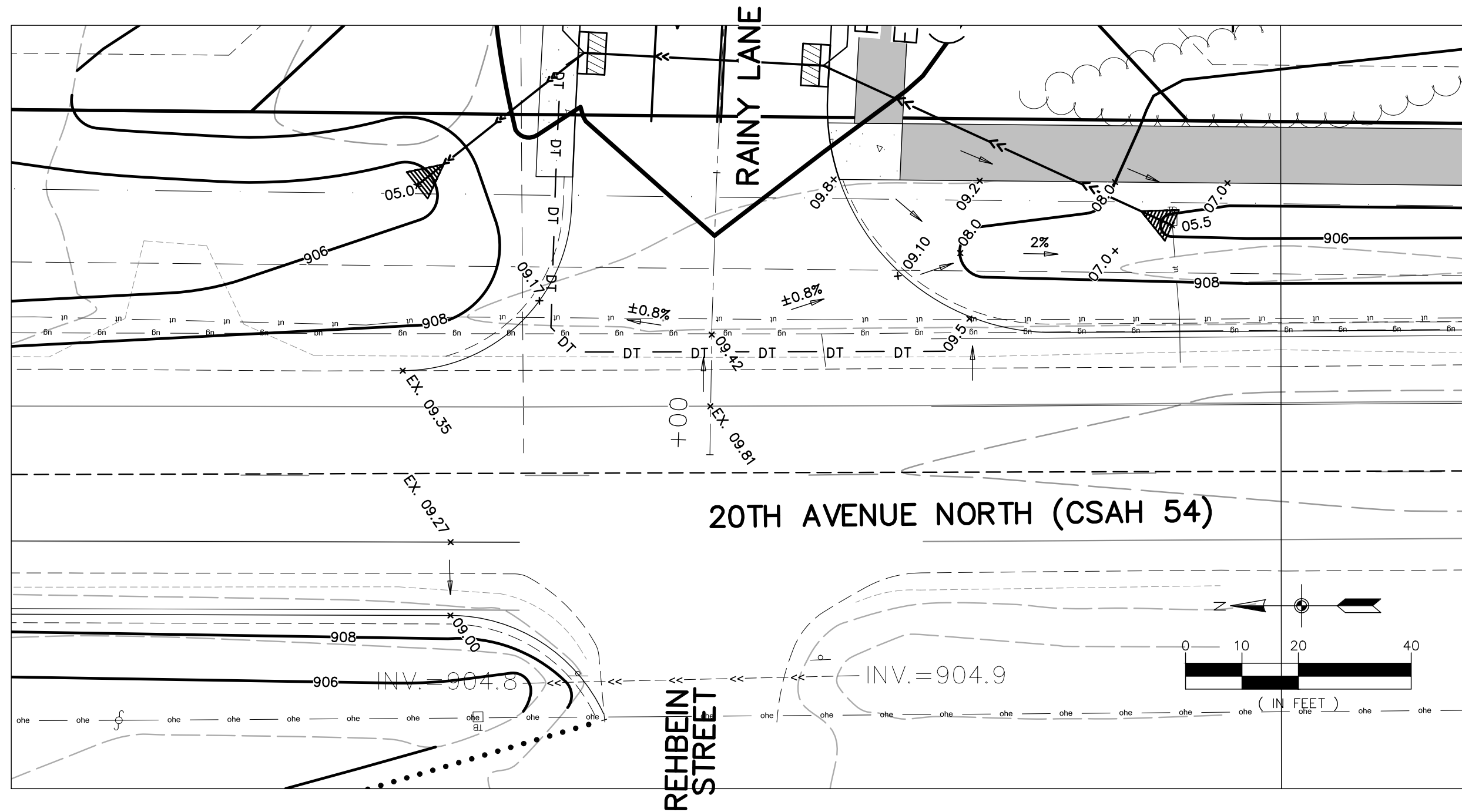
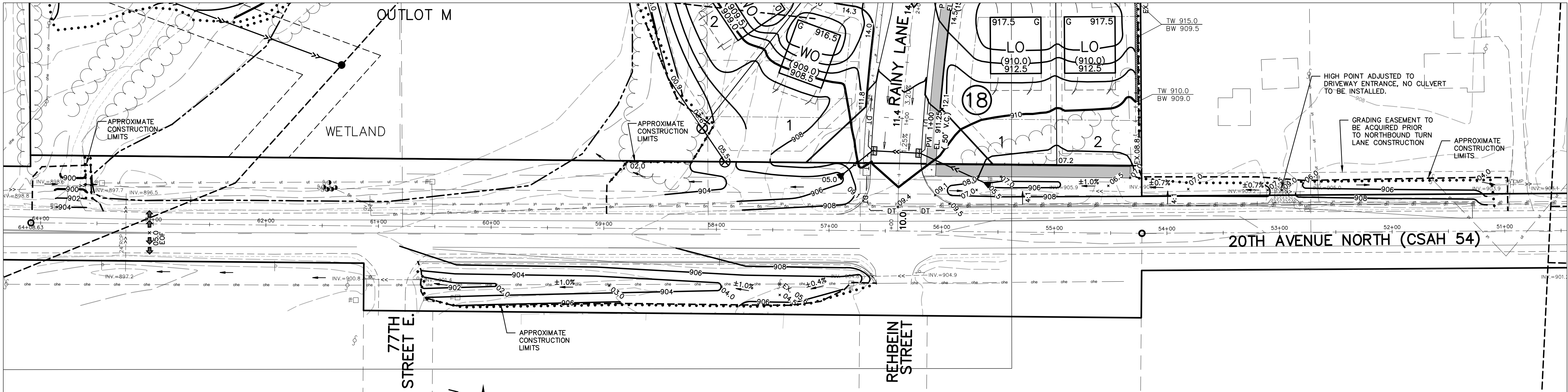
SHEET INDEX

- T1. COVER
- T2. REMOVALS
- T3. GRADING, DRAINAGE & EROSION CONTROL PLAN
- T4. SITE & UTILITY PLAN
- T5. SIGNING & STRIPING PLAN
- T6. PEDESTRIAN RAMP DETAILS
- T7. CROSS SECTIONS
- T8. TRAFFIC CONTROL PLAN



CALL BEFORE YOU DIG

Know what's below.
Call before you dig.



GRADING LEGEND

	EXISTING	PROPOSED
PROPERTY LINE	---	---
EASEMENT LINE	---	---
CURB LINE	---	---
BITUMINOUS	---	---
CONCRETE	---	---
SANITARY SEWER	---	---
STORM SEWER	---	---
WATER MAIN	---	---
OVERHEAD UTILITY	---	---
UNDERGROUND TELEPHONE	---	---
UNDERGROUND FIBEROPTIC	---	---
UNDERGROUND GAS	---	---
STORM CATCH BASIN	---	---
STORM MANHOLE	---	---
HYDRANT	---	---
GATE VALVE	---	---
TELEPHONE BOX	---	---
UTILITY POLE	---	---
FENCE	---	---
GRAVEL EDGE	---	---
5' CONTOUR	---	---
1' CONTOUR	---	---
WETLAND LINE	---	---
SPOT ELEVATION	---	---
SIGN	---	---
TREELINE	---	---
SOIL BORING	---	---

TURF ESTABLISHMENT

TURF ESTABLISHMENT SHALL APPLY TO ALL DISTURBED AREAS AND SHALL BE ACCORDING TO MNDOT STANDARD SPECIFICATIONS FOR CONSTRUCTION (LATEST EDITION) EXCEPT AS MODIFIED BELOW.

TURF ESTABLISHMENT SHALL OCCUR AS SOON AS POSSIBLE BUT IN NO CASE MORE THAN 7 DAYS.

SEED: MNDOT MIXTURE 33-261 AT 35 POUNDS PER ACRE.

DORMANT SEED: SHALL BE APPLIED AT TWICE THE NORMAL RATE AFTER NOVEMBER 1ST.

MULCH: TYPE 1 AT 2 TONS PER ACRE (DISK ANCHORED).

FERTILIZER: TYPE 1 10-10-10 AT 200 POUNDS PER ACRE.

CALL BEFORE YOU DIG



811

Know what's below.
Call before you dig.

The subsurface utility information shown on this plan is utility Quality Level D. This quality level was determined according to the guidelines of OI/ASCE 38-02, entitled "Standard Guideline for the Collection and Depiction of Existing Subsurface Utility Data."



ENGINEERING
SURVEYING
ENVIRONMENTAL

3890 PHEASANT RIDGE DR NE
SUITE 100
BLAINE, MN 55449
TEL 763.489.7900
FAX 763.489.7959
CARLSONMCCAIN.COM

I hereby certify that this plan, specification or report was prepared by me or under my direct supervision and that I am a duly Licensed Professional Engineer under the laws of the State of Minnesota

Print Name: Justin J Olson

Signature: *Justin J Olson*

Date: 12/09/22 License #: 54231

Drawn: NJP

Designed: JJO

Date: 12/09/22

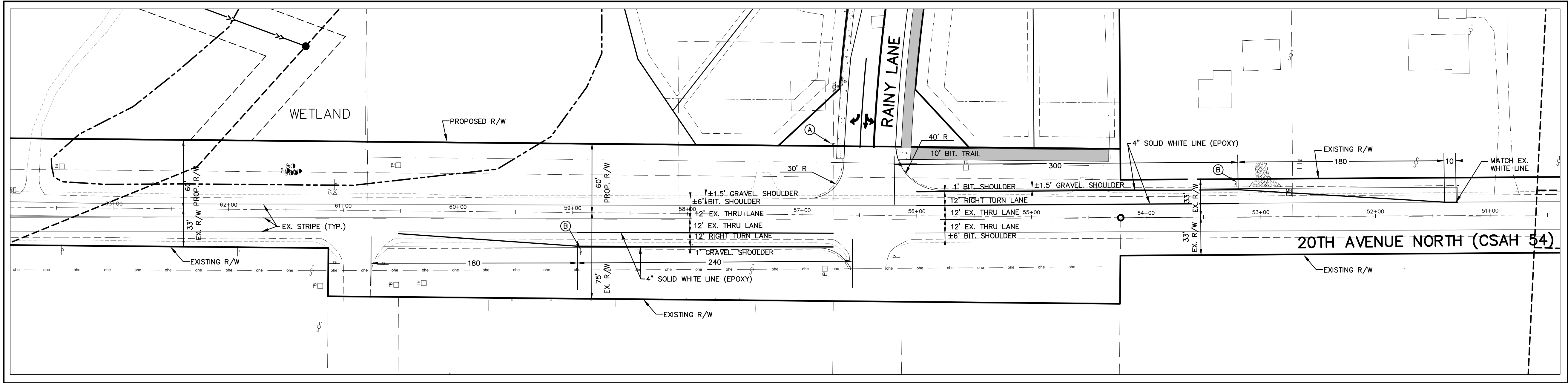
Revisions:
1. 08/17/2023 Per City & County Comments
2. 10/05/2023 Per County Comments
3. 3/04/2024 Adjust eastern ditch

LENNAR
16305 36th Avenue N. - Suite 600
Plymouth, MN 55446

WATERMARK 6TH ADDITION
Lino Lakes, MN

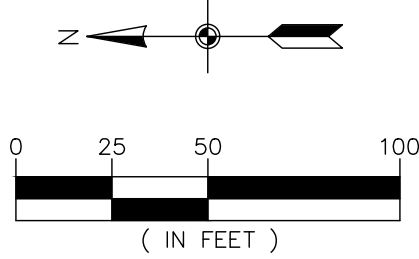
**GRADING, DRAINAGE &
EROSION CONTROL PLAN**

T3
of
8



LEGEND		
	EXISTING	PROPOSED
PROPERTY LINE	---	---
EASEMENT LINE	---	---
CURB LINE	==	==
BITUMINOUS	----	----
GRAVEL	----	----
CONCRETE	----	----
SANITARY SEWER	---	---
STORM SEWER	---	---
WATER MAIN	---	---
OVERHEAD UTILITY	---	---
UNDERGROUND TELEPHONE	---	---
UNDERGROUND FIBEROPTIC	---	---
UNDERGROUND GAS	---	---
STORM CATCH BASIN	▲	▲
STORM MANHOLE	●	●
HYDRANT	●	●
GATE VALVE	●	●
TELEPHONE BOX	□	□
UTILITY POLE	○	○
FENCE	---	---
GRAVEL EDGE	---	---
STRIPING	---	---
SIGN	---	---

SIGN SCHEDULE			
SIGN	SIGN NO.	SIZE	QUANTITY
(A) STOP	R1-1	36" X 36" (WHITE ON RED)	(INCLUDED IN SITE PLANS)
(B) RIGHT TURN LANE	R3-7R	30" X 30" (BLACK ON WHITE)	2

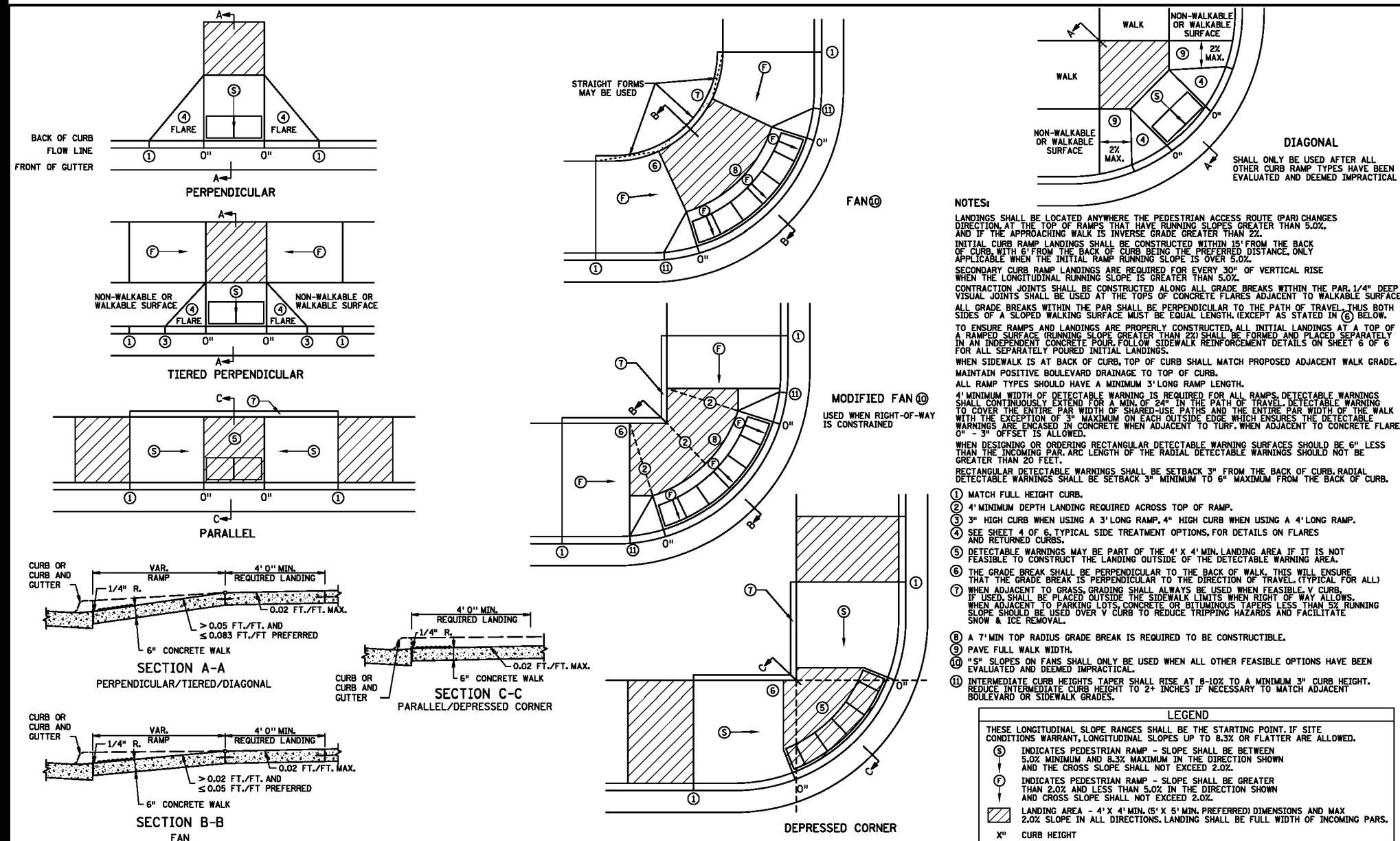


CALL BEFORE YOU DIG

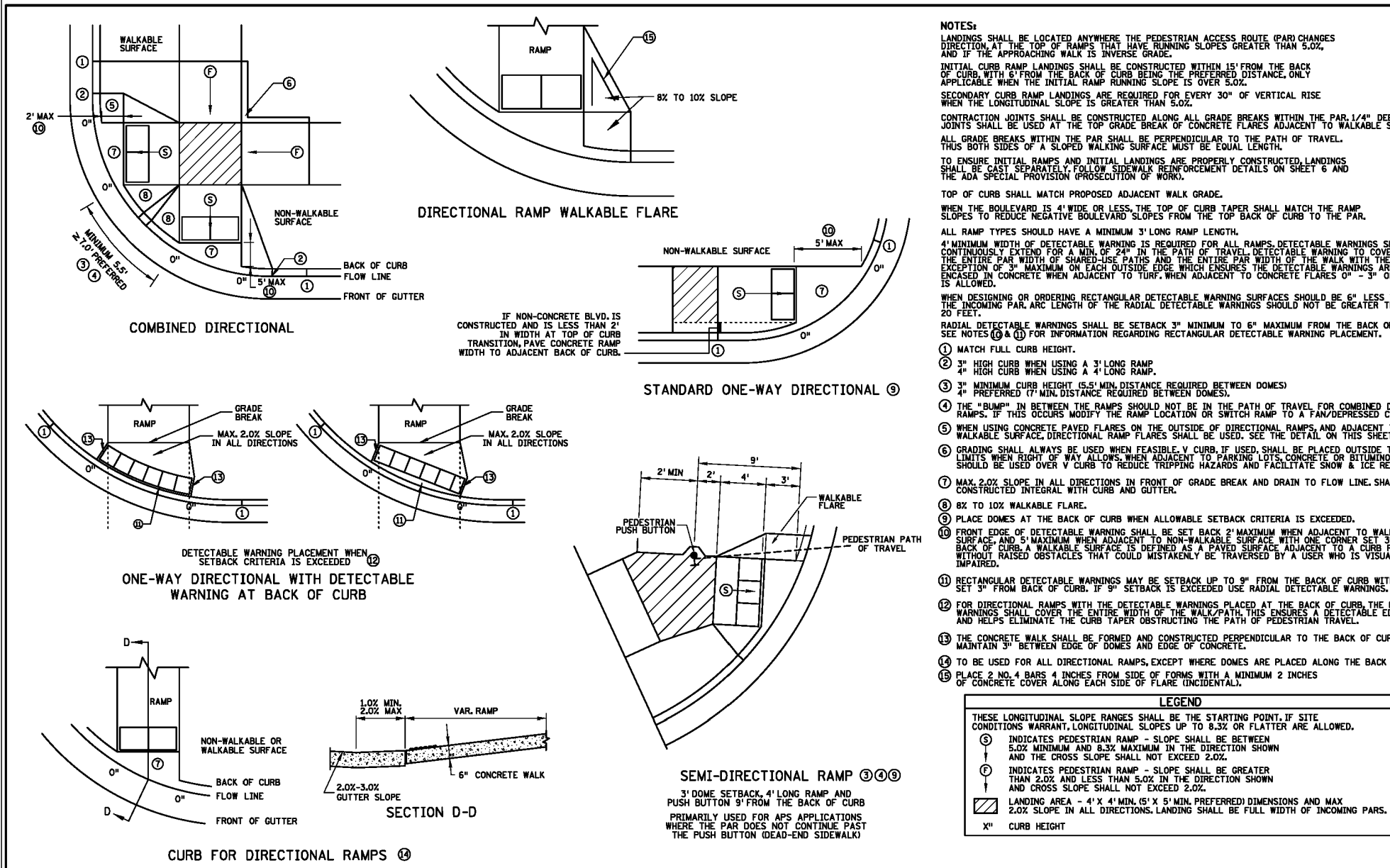
811

Know what's below.
Call before you dig.

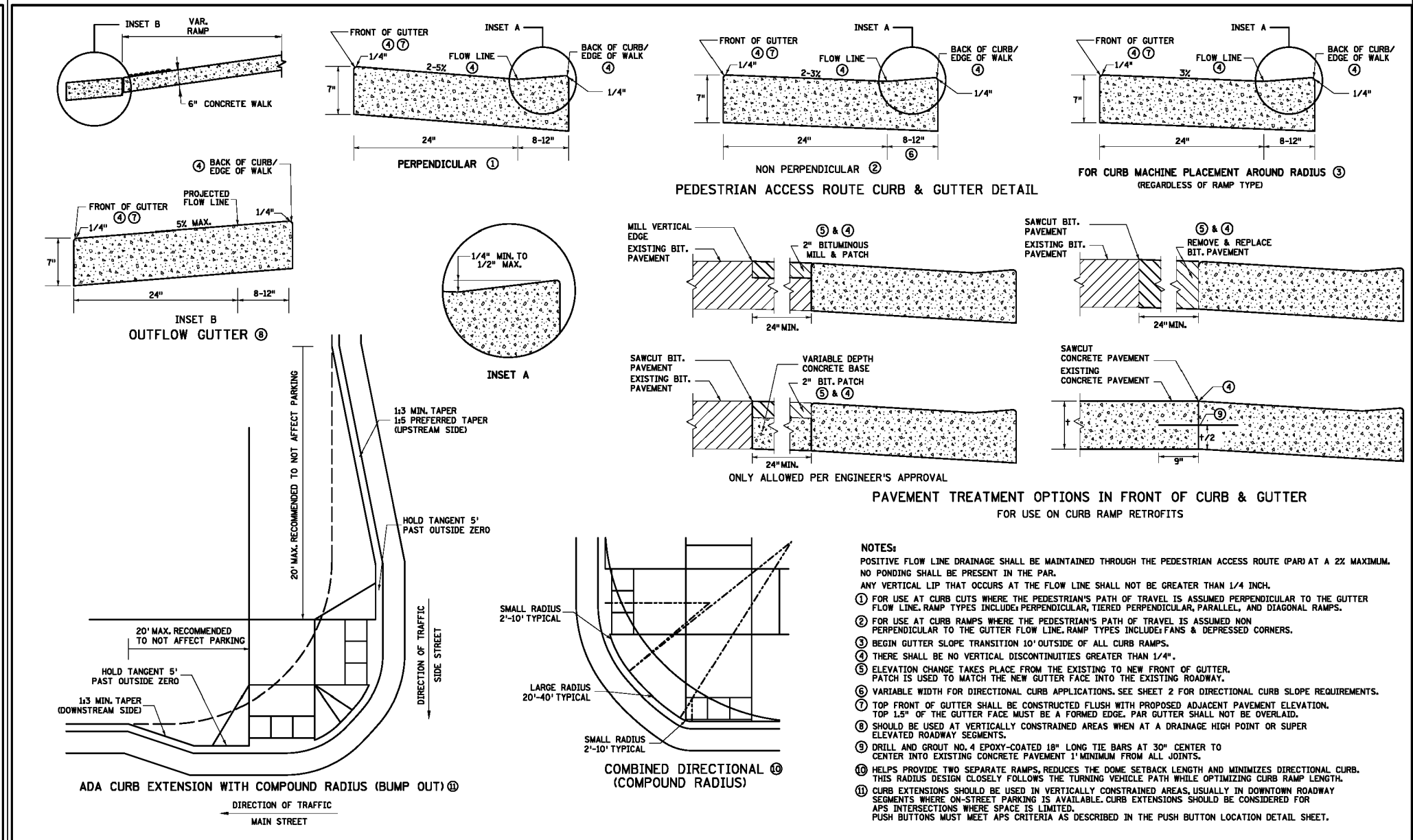
The subsurface utility information shown on this plan is utility Quality Level D. This quality level was determined according to the guidelines of CI/ASCE 38-02, entitled "Standard Guideline for the Collection and Depiction of Existing Subsurface Utility Data."



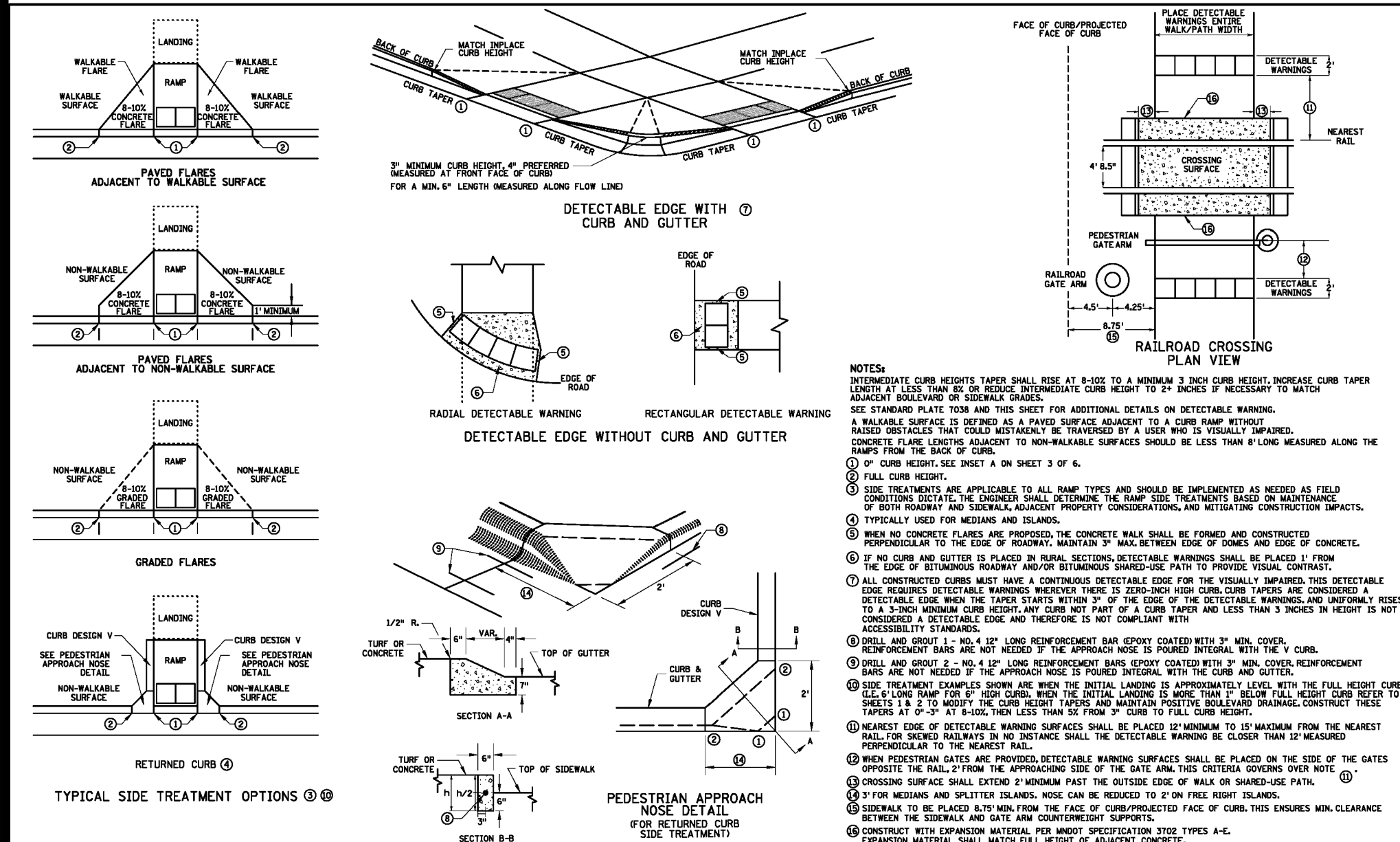
STANDARD PLAN 5-297.250 1 OF 6
MINNESOTA DEPARTMENT OF TRANSPORTATION
STATE PROJ. NO. (TH) SHEET NO. OF SHEETS



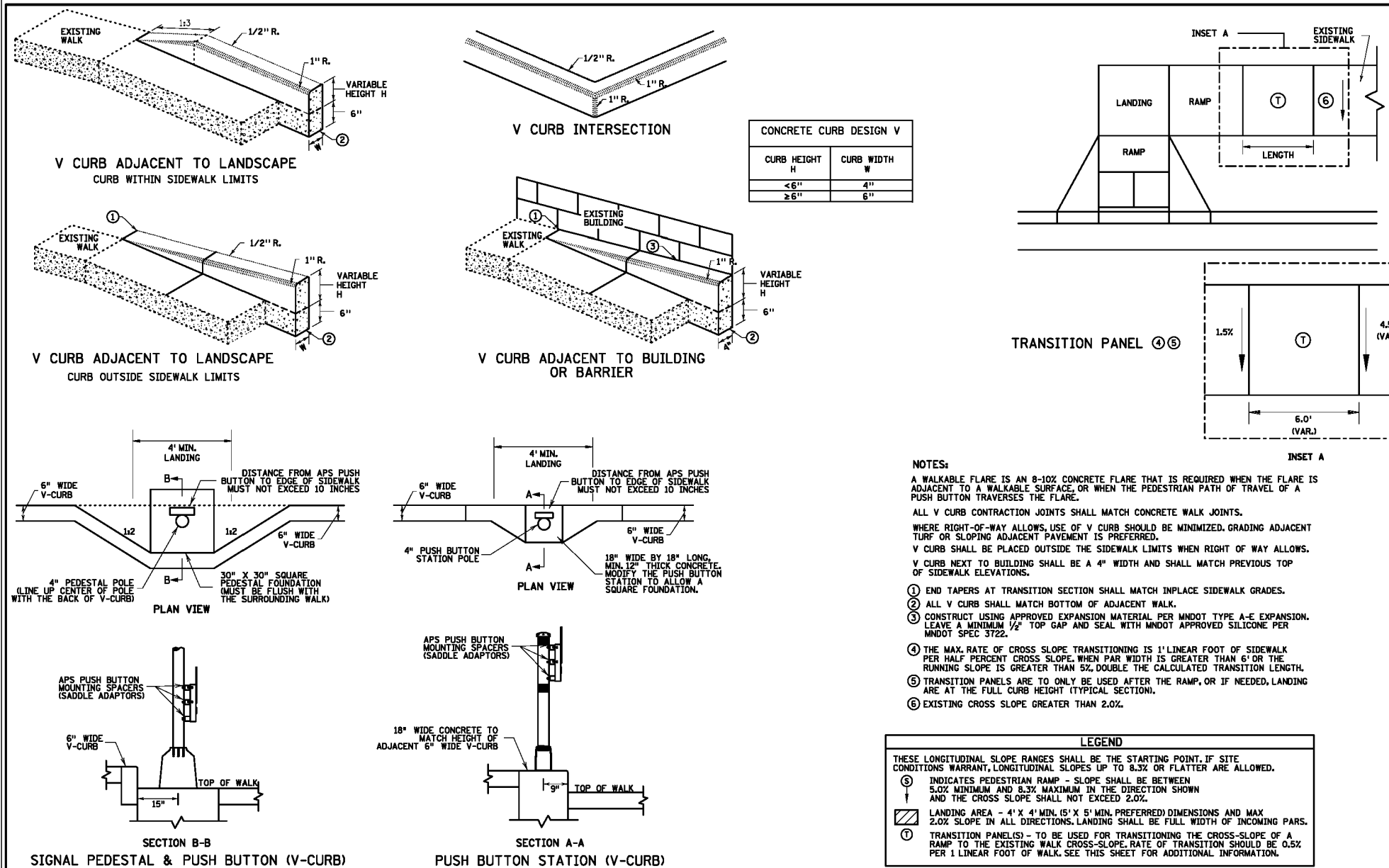
STANDARD PLAN 5-297.250 2 OF 6
MINNESOTA DEPARTMENT OF TRANSPORTATION
STATE PROJ. NO. (TH) SHEET NO. OF SHEETS



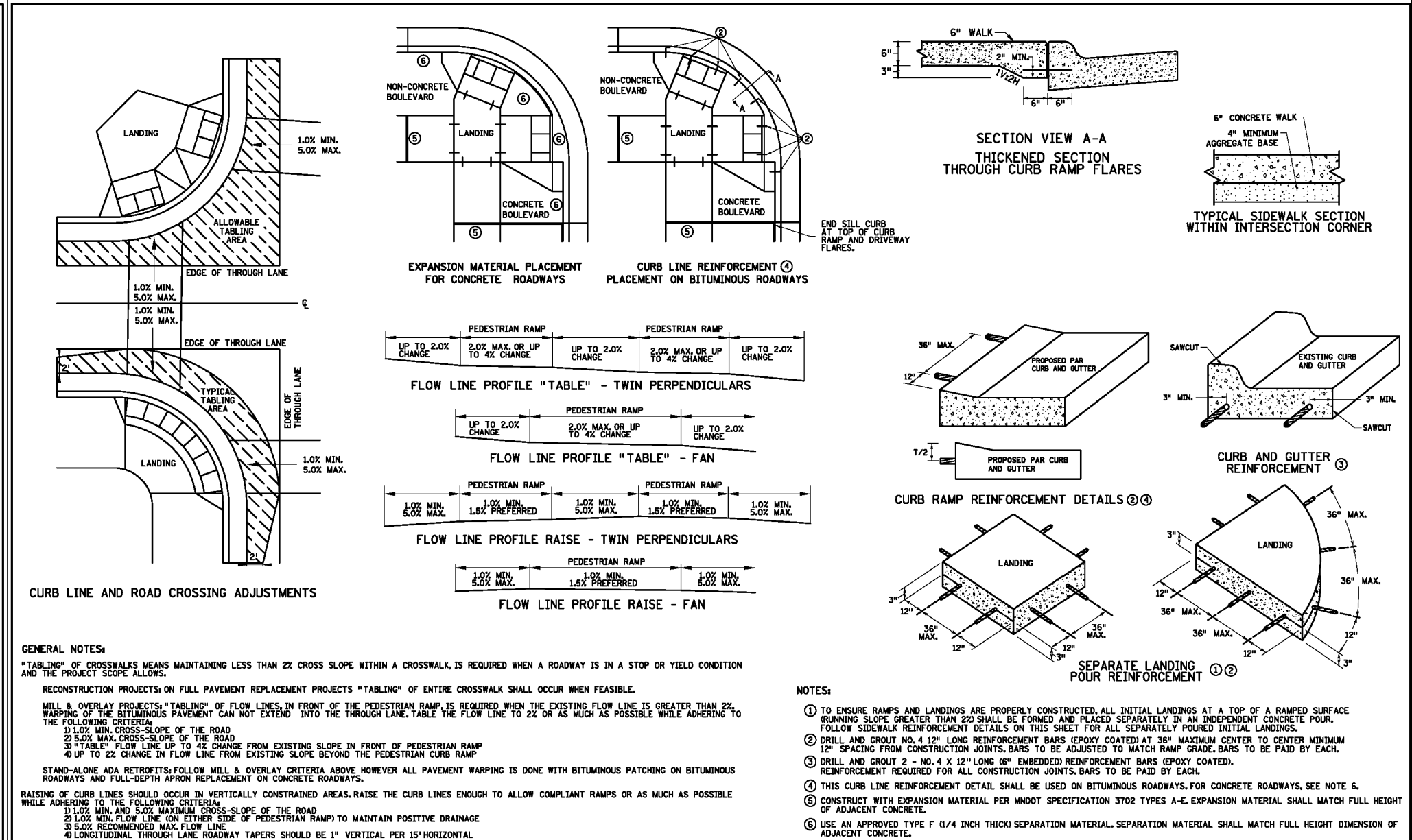
STANDARD PLAN 5-297.250 3 OF 6
MINNESOTA DEPARTMENT OF TRANSPORTATION
STATE PROJ. NO. (TH) SHEET NO. OF SHEETS



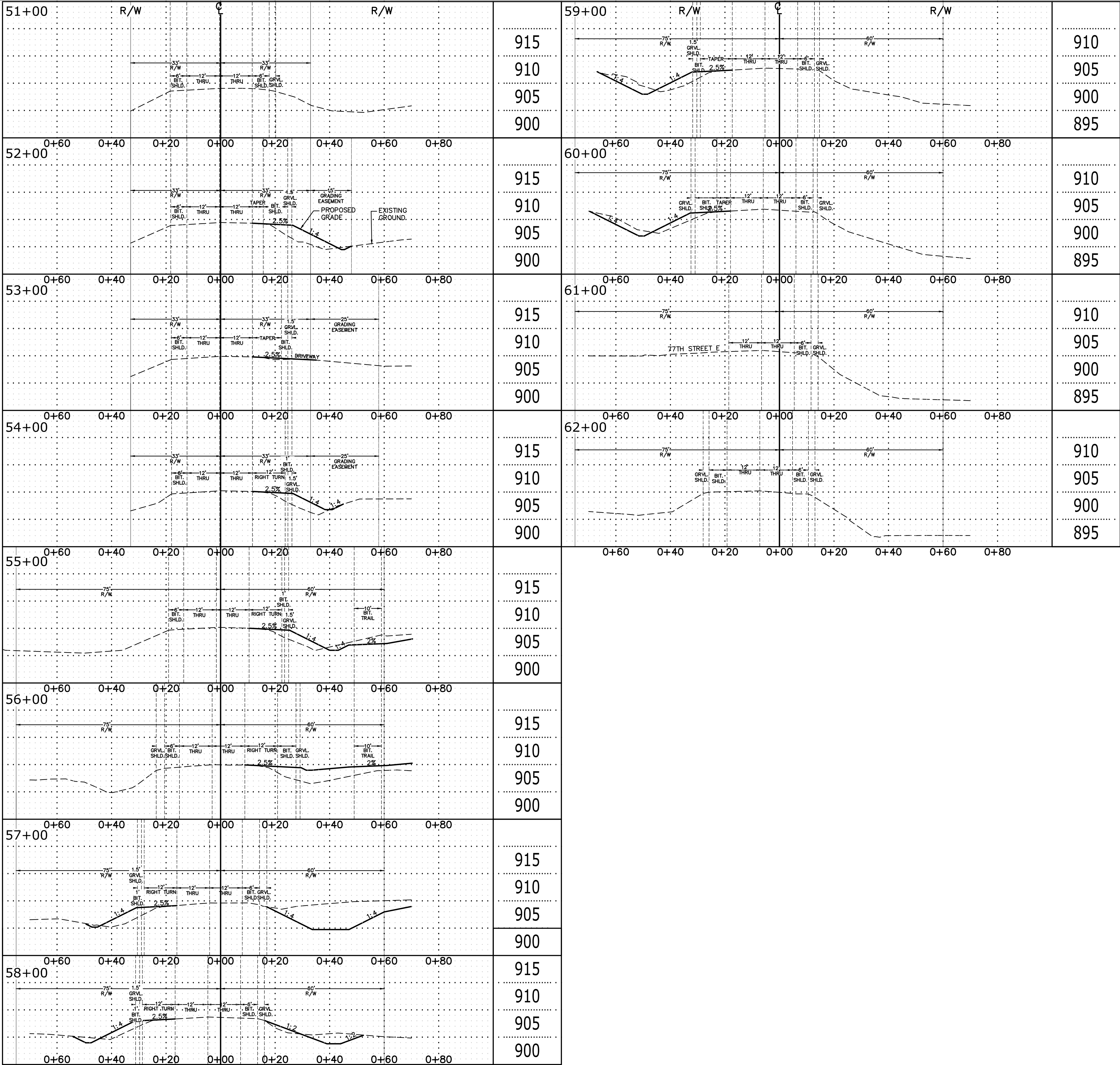
STANDARD PLAN 5-297.250 4 OF 6
MINNESOTA DEPARTMENT OF TRANSPORTATION
STATE PROJ. NO. (TH) SHEET NO. OF SHEETS

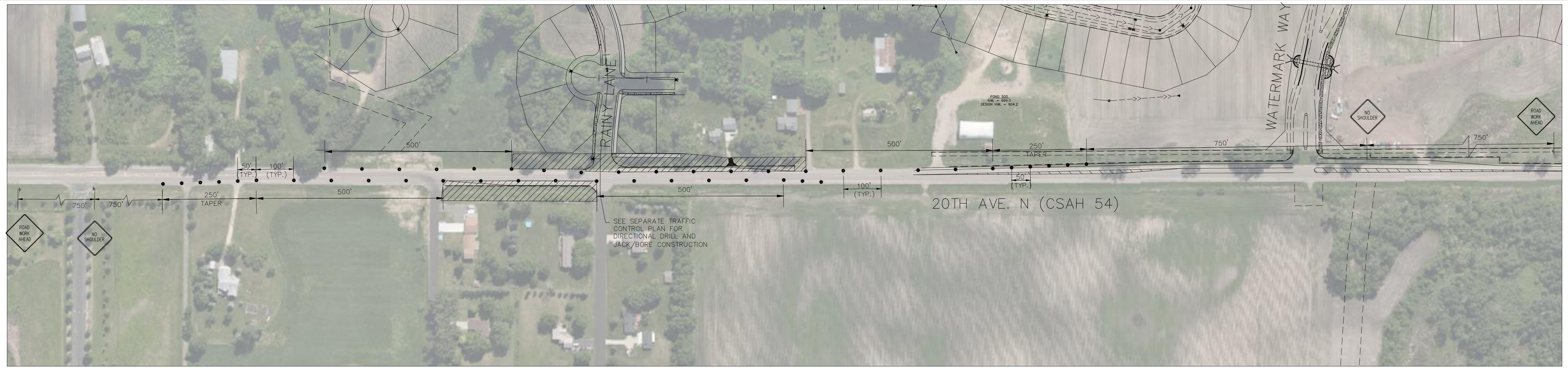


STANDARD PLAN 5-297.250 5 OF 6
MINNESOTA DEPARTMENT OF TRANSPORTATION
STATE PROJ. NO. (TH) SHEET NO. OF SHEETS



STANDARD PLAN 5-297.250 6 OF 6
MINNESOTA DEPARTMENT OF TRANSPORTATION
STATE PROJ. NO. (TH) SHEET NO. OF SHEETS





LEGEND		
	EXISTING	PROPOSED
PROPERTY LINE	---	---
EASEMENT LINE	---	---
CURB LINE	---	---
BITUMINOUS	□	□
CONCRETE	□	□
CONSTRUCTION AREA		▨
TRAFFIC DRUMS	●	●
SIGN	—	—

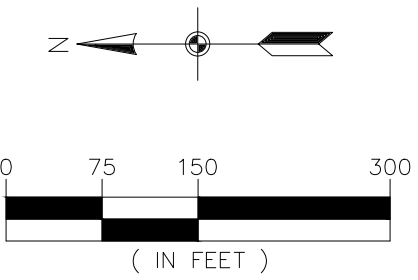
SIGN SCHEDULE	
SIGN	QUANTITY
	2
	4

NOTES:

INTERMITTENT SIGNS SHALL BE USED FOR LOOSE GRAVEL, UNEVEN LANES, BUMP, ETC.

ALL EDGE DROP OFFS MUST BE BACKFILLED OR RAMPED MEETING LONITUDINAL DROP-OFF GUIDLINES MNDOT FIELD MANUAL FIGURE 6K-7 WHEN FLAGGERS ARE NOT PRESENT.

IF THE LONGITUDINAL DROP-OFF REACHES MORE THAN 1 FOOT, A J-BARRIER MAY BE NEEDED AND A SEPARATE TRAFFIC CONTROL PLAN MUST BE SUBMITTED BY THE CONTRACTOR. FOLLOW MNDOT TEMPORARY BARRIER GUIDANCE MANUAL.



The subsurface utility information shown on this plan is utility Quality Level D. This quality level was determined according to the guidelines of CI/ASCE 38-02, entitled "Standard Guideline for the Collection and Depiction of Existing Subsurface Utility Data."