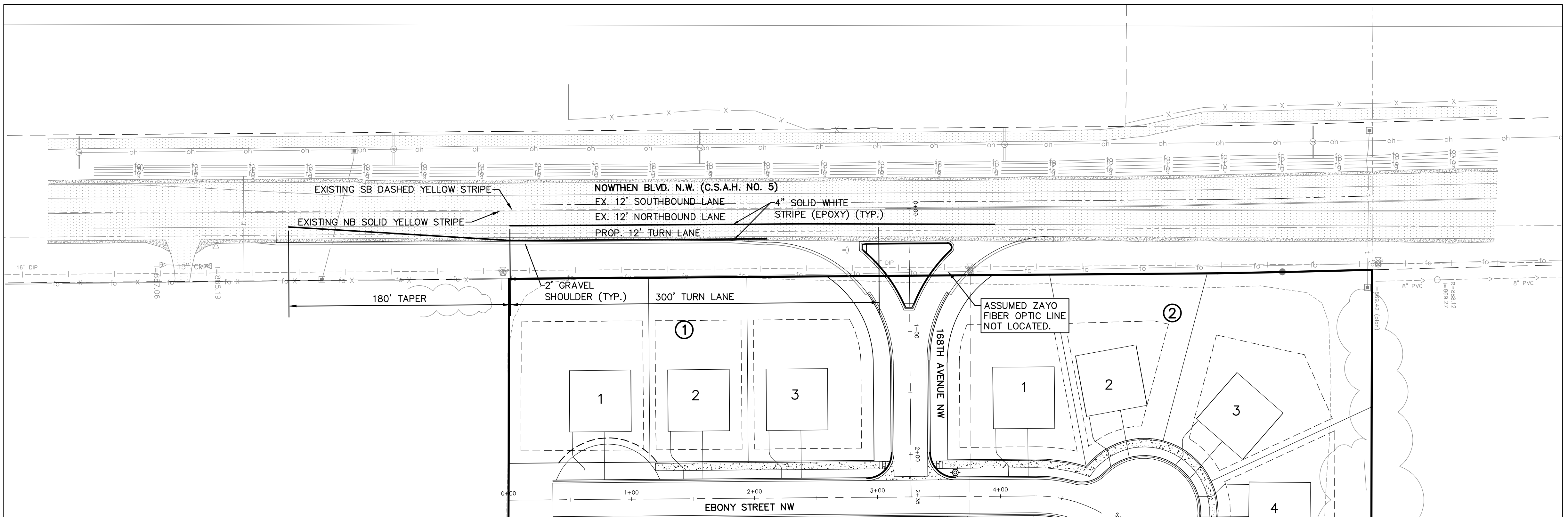


EXISTING CONDITIONS

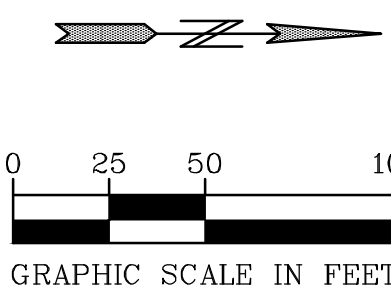


PROPOSED LANE ADJUSTMENT

APPROVED FOR COUNTY TURN LANE ITEMS ONLY

ANOKA COUNTY ENGINEER

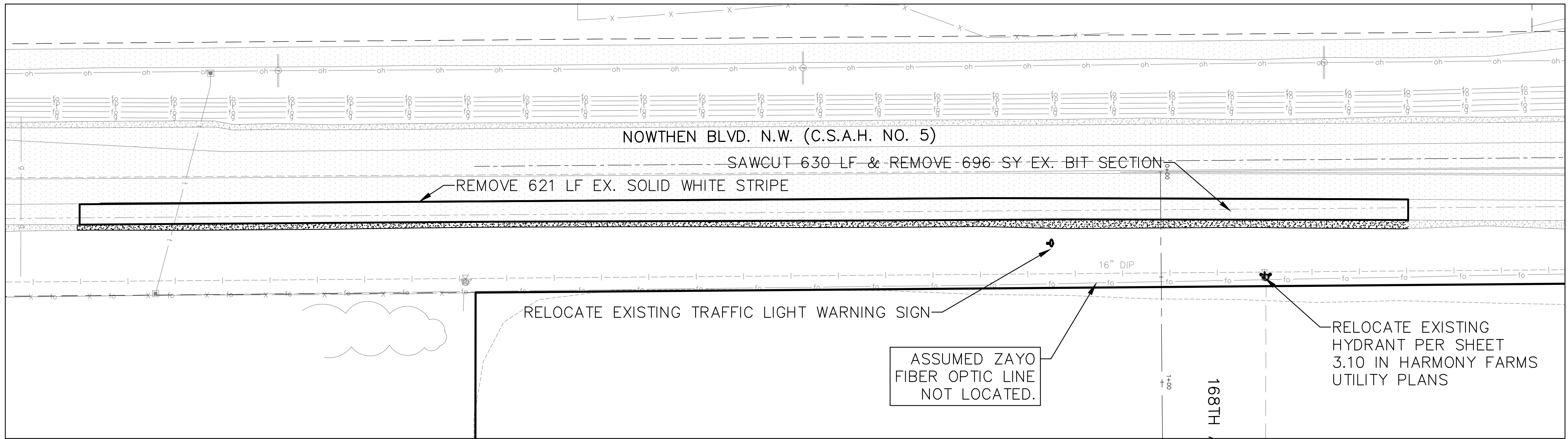
DATE: 10/10/2024



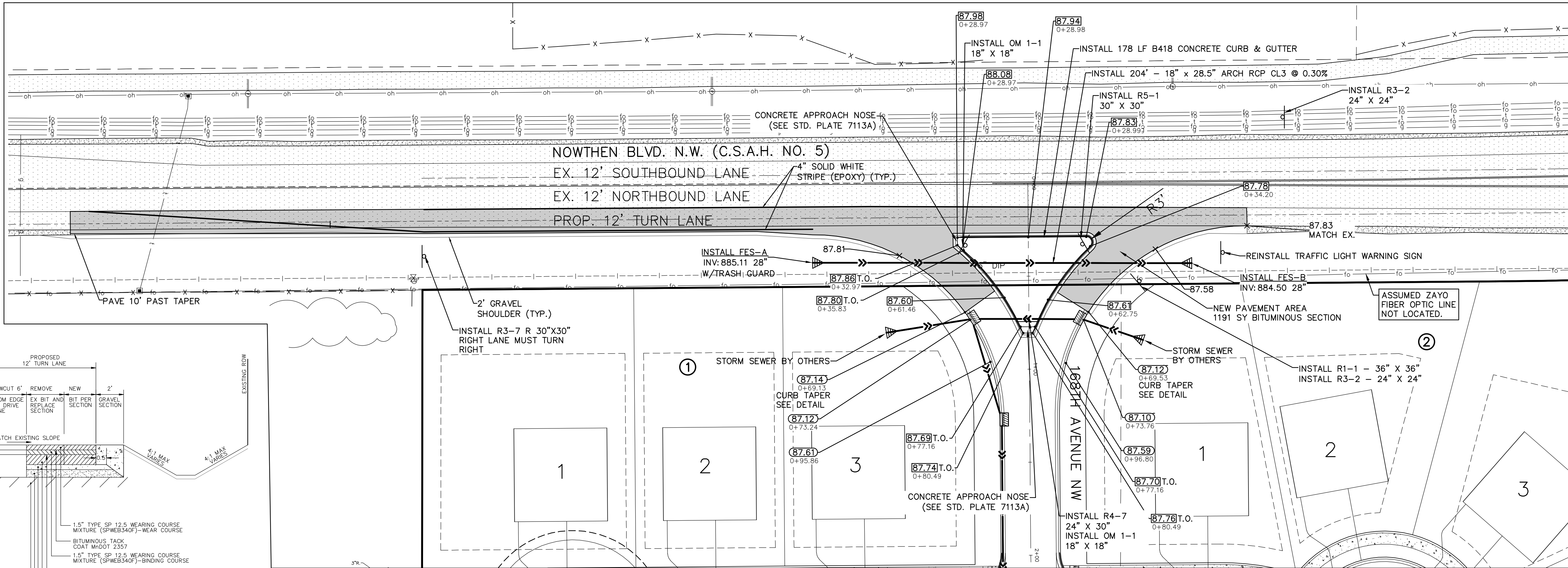
BENCH MARK
 TOP NUT OF HYDRANT AT NE QUAD
 OF INTERSECTION OF NOWTHEN
 BLVD. N.W. AND 167TH AVE. N.W.
 EL=890.48
 TOP NUT OF HYDRANT DIRECTLY
 NORTH OF INTERSECTION OF 167TH
 AVE. N.W. AND COQUINA ST. N.W.
 EL=901.06

CURB LEGEND

- 08.15 = GUTTER ELEVATION FOR SURMOUNTABLE CURB
- 08.32 = GUTTER ELEVATION FOR B418 CURB (ISLAND)
- 08.32]T.O. = GUTTER ELEVATION FOR B418 CURB WITH TIP OUT GUTTER (ISLAND)
- 07.82 = BITUMINOUS ELEVATION
- ===== = SURMOUNTABLE CURB & GUTTER (CITY PLATE STR-1)
- ===== = B418 CURB & GUTTER (ISLAND) (MNDOT STD. PLATE 7100H)
- ===== = BITUMINOUS EDGE

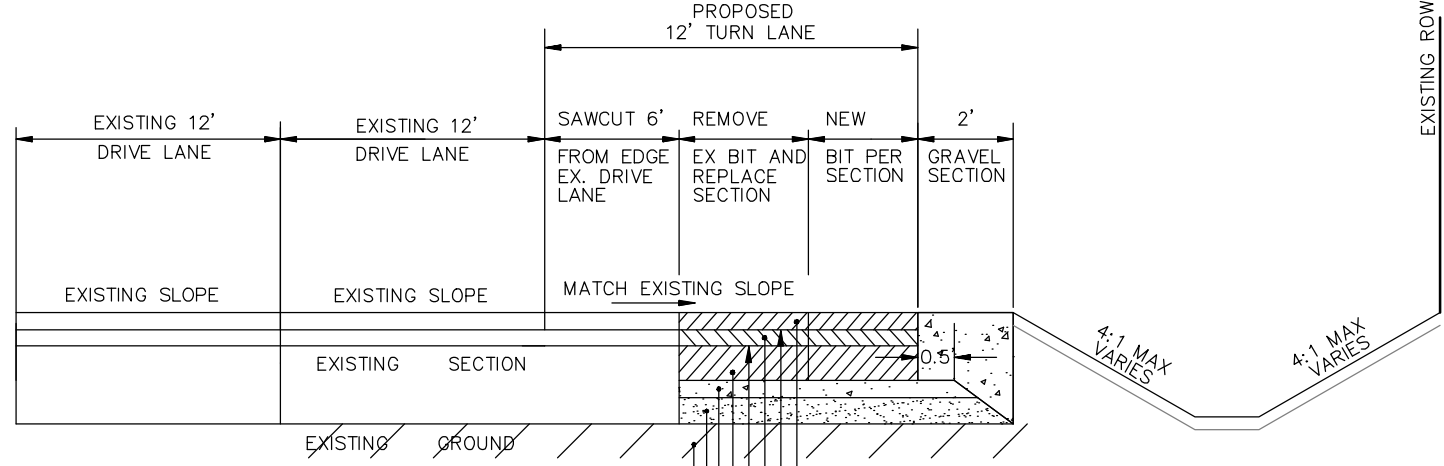


DEMOLITION PLAN

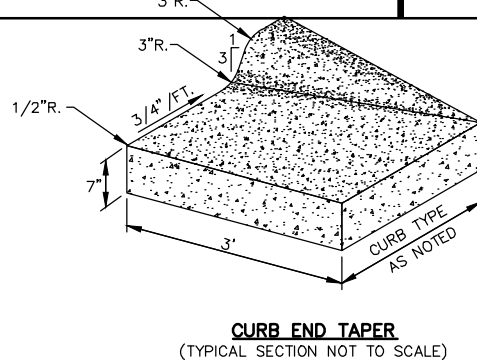


CONSTRUCTION PLAN

NOTE:
CONTRACTOR SHALL SUBMIT A TRAFFIC CONTROL PLAN ACCEPTABLE TO THE CITY OF RAMSEY AND ANOKA COUNTY.



NORTHEN BLVD N.W. (C.S.A.H.) TURN LANE TYPICAL SECTION
(MATCH EXISTING SECTION)



PIONEERengineering
CIVIL ENGINEERS LAND PLANNERS LAND SURVEYORS LANDSCAPE ARCHITECTS

2422 Enterprise Drive
Mendota Heights, MN 55120

(651) 681-1914
Fax: 681-9488
www.pioneereng.com

I hereby certify that this plan was prepared by me or under my direct supervision and that I am a duly Licensed Professional Engineer under the laws of the State of Minnesota

Name

Brian N. Molinaro
Brian N. Molinaro

Reg. No. 47504

Date 04-12-2024

Revisions

1. 04-30-2024 Sign Count
2. 05-06-2024 County Comments
3. 06-05-2024 City Comments
4. 06-21-2024 County Comments

Date

04-12-2024

Designed

NAP

Drawn

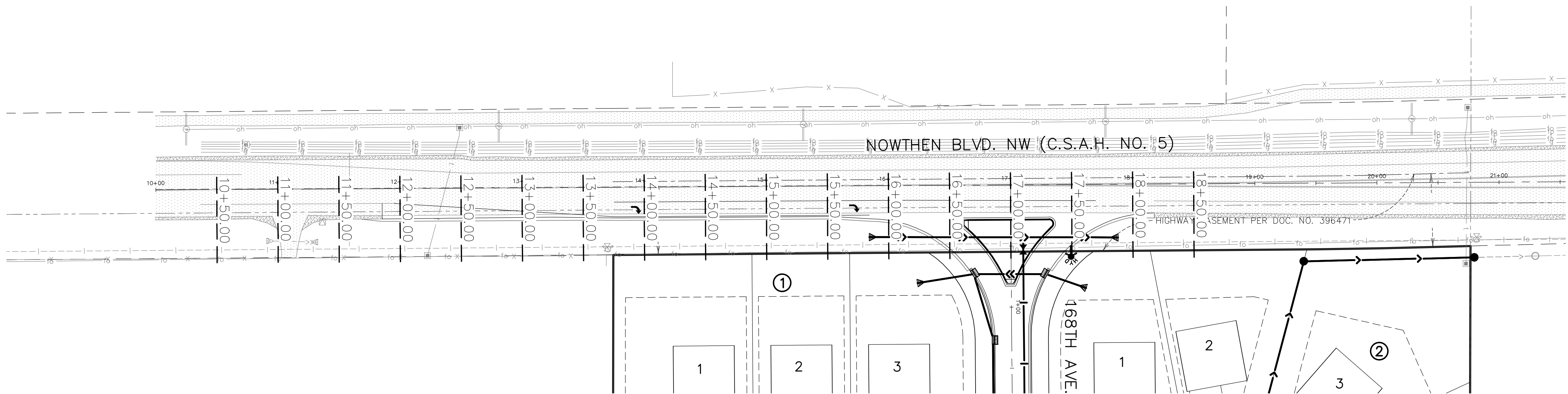
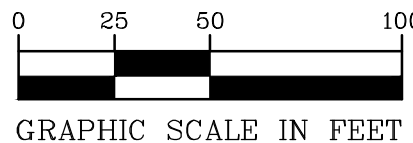
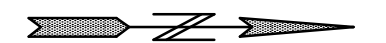
BNM

C.S.A.H. NO. 5 TURN LANE
CONSTRUCTION

DRP MN 1, LLC.
16305 36TH AVE. N, SUITE 600
PLYMOUTH, MINNESOTA 55446

HARMONY FARMS 2ND ADDITION
RAMSEY, MINNESOTA

TL2 OF 5



BENCH MARK
TOP NUT OF HYDRANT AT NE QUAD
OF INTERSECTION OF NOWTHEN
BLVD. N.W. AND 167TH AVE. N.W.
EL=890.48
TOP NUT OF HYDRANT DIRECTLY
NORTH OF INTERSECTION OF 167TH
AVE. N.W. AND COQUINA ST. N.W.
EL=901.06

01-ENG-123074-SHEET-TURN-SECTIONS

PIONEERengineering
CIVIL ENGINEERS LAND PLANNERS LAND SURVEYORS LANDSCAPE ARCHITECTS

2422 Enterprise Drive
Mendota Heights, MN 55120

(651) 681-1914
Fax: 681-9488
www.pioneereng.com

I hereby certify that this plan was prepared by
me or under my direct supervision and that I
am a duly Licensed Professional Engineer
under the laws of the State of Minnesota

Name

Brian N. Molinaro
Brian N. Molinaro

Reg. No.

47504

Date

04-12-2024

Revisions

1. 04-30-2024 Sign Count
2. 05-06-2024 County Comments
3. 06-05-2024 City Comments
4. 06-21-2024 County Comments

Date

04-12-2024

Designed

NAP

Drawn

BNM

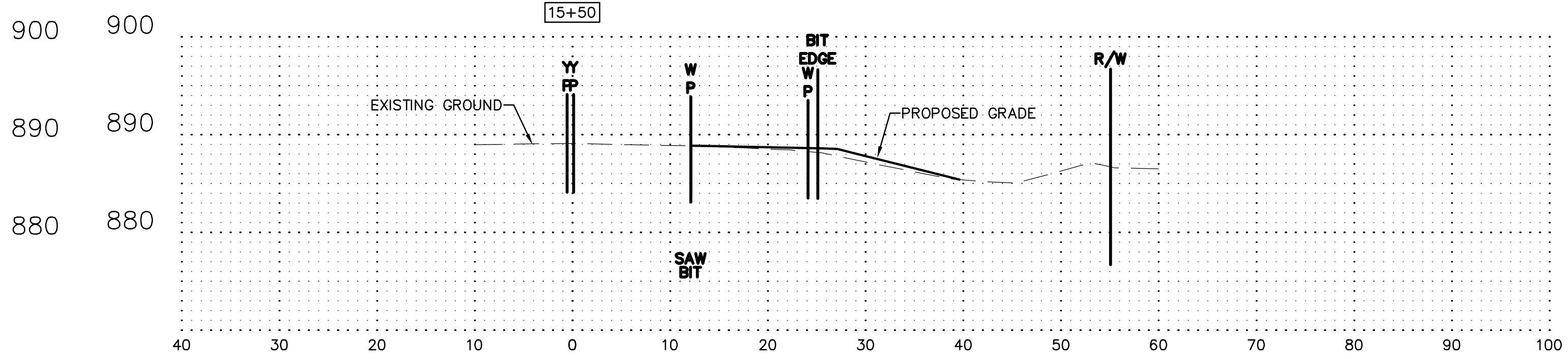
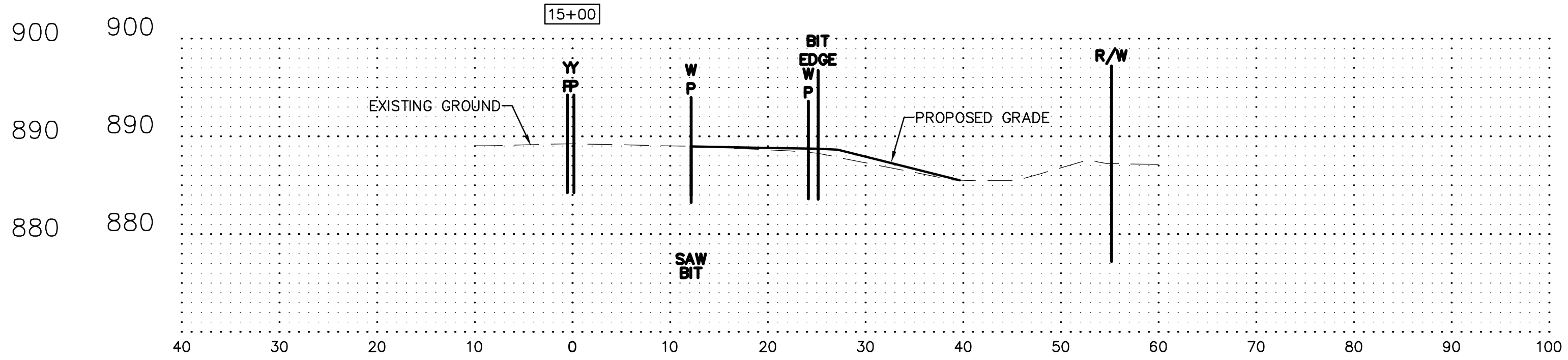
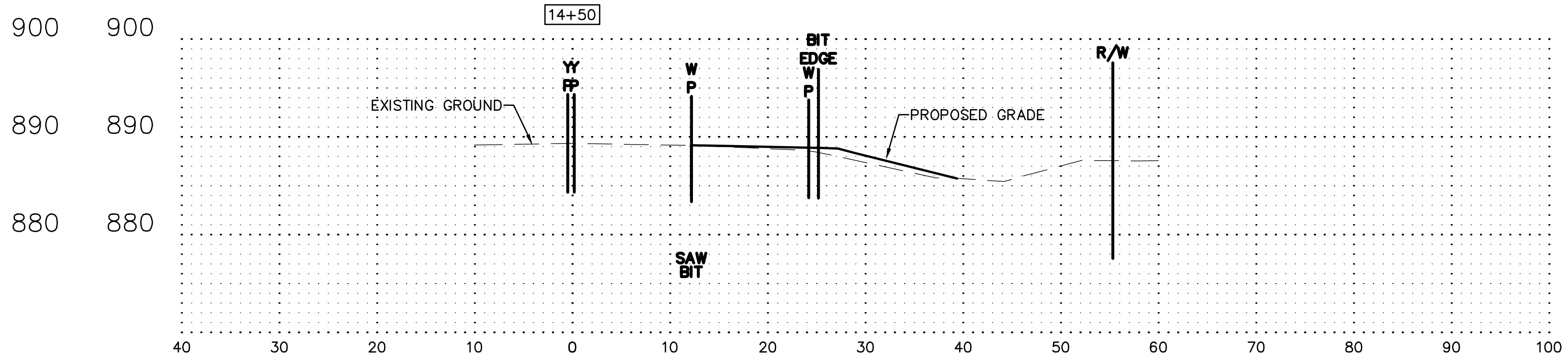
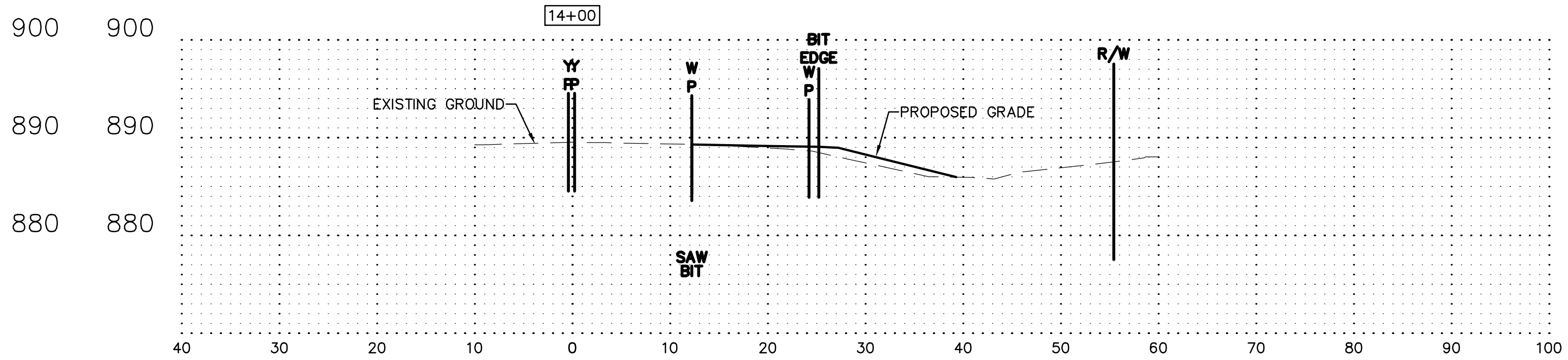
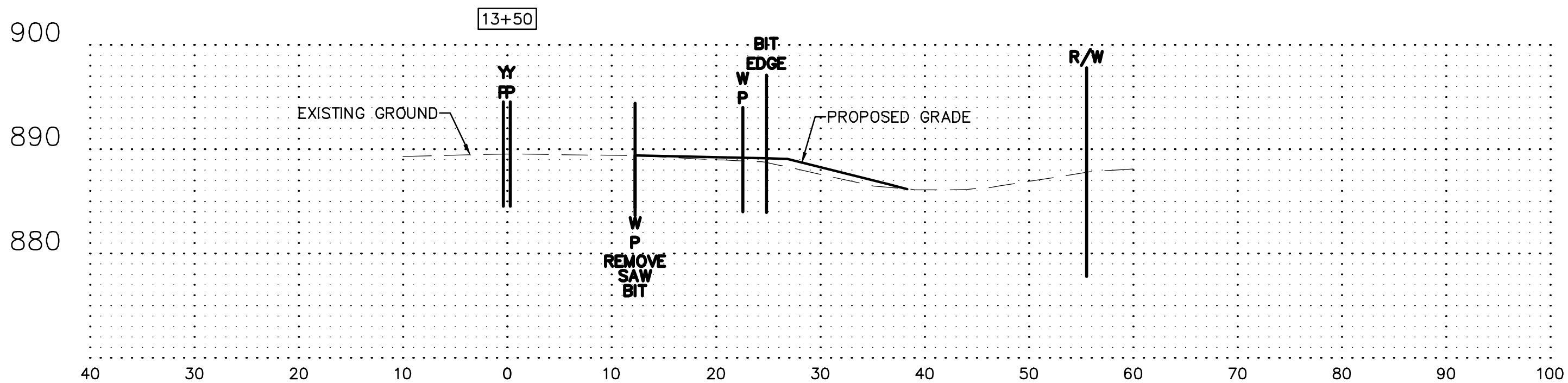
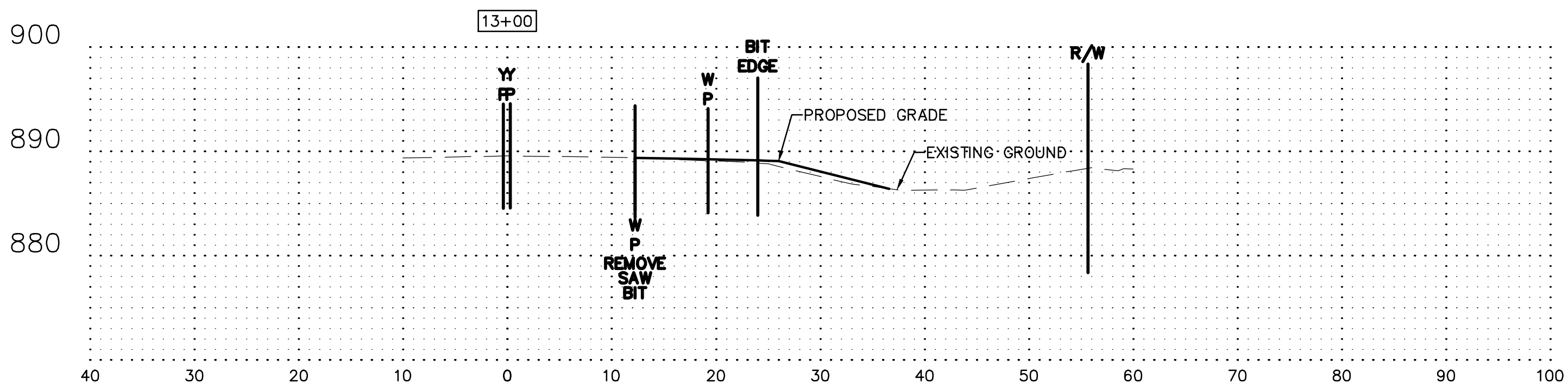
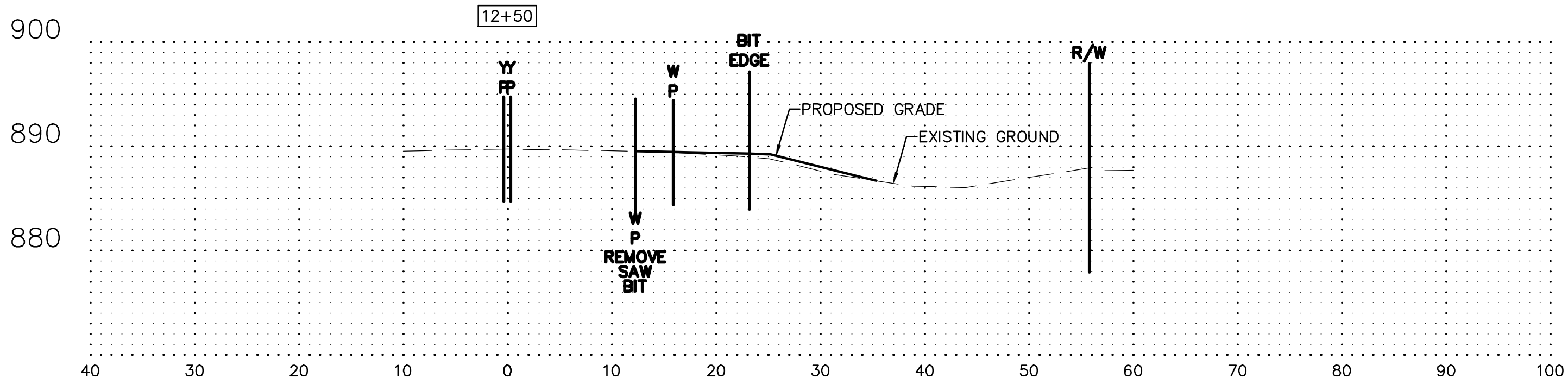
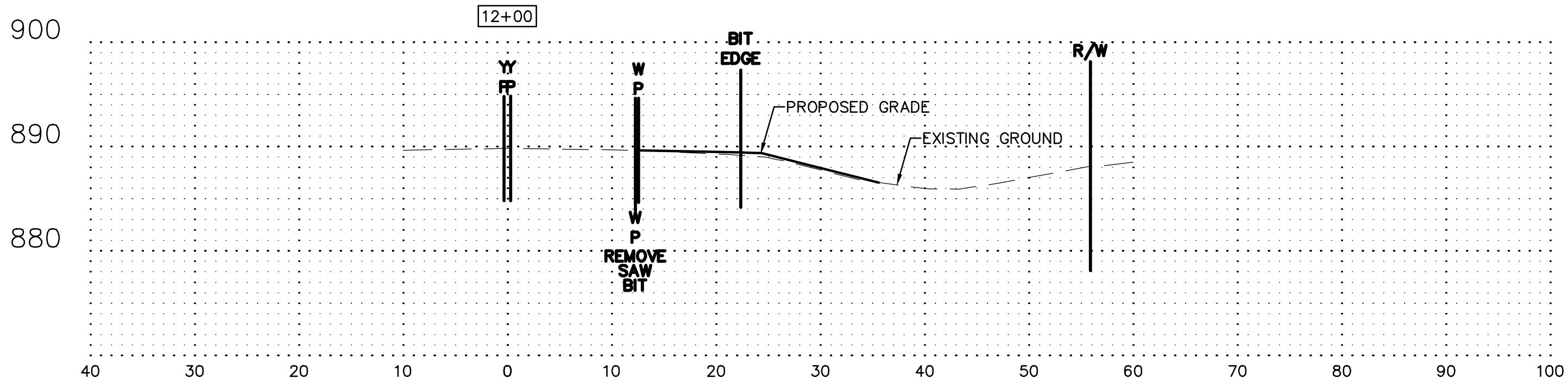
TURN LANE SECTIONS

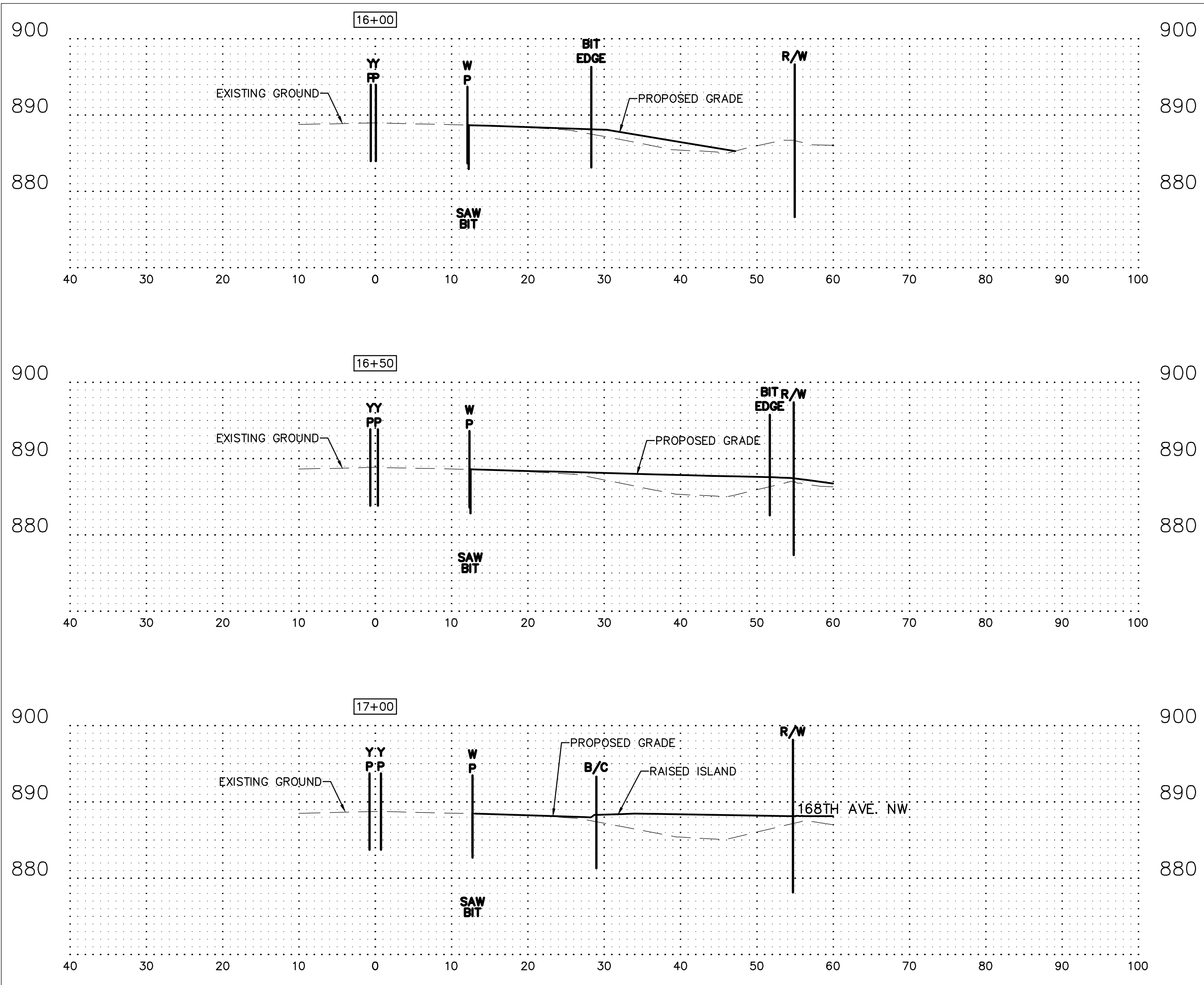
DRP MN 1, LLC.
16305 36TH AVE. N, SUITE 600
PLYMOUTH, MINNESOTA 55446

HARMONY FARMS 2ND ADDITION
RAMSEY, MINNESOTA

TL3 OF

5





BENCH MARK
TOP NUT OF HYDRANT AT NE QUAD
OF INTERSECTION OF NOWTHEN
BLVD. N.W. AND 167TH AVE. N.W.
EL=890.48
TOP NUT OF HYDRANT DIRECTLY
NORTH OF INTERSECTION OF 167TH
AVE. N.W. AND COQUINA ST. N.W.
EL=901.06



2422 Enterprise Drive
Mendota Heights, MN 55120

(651) 681-1914
Fax: 681-9488
www.pioneereng.com

I hereby certify that this plan was prepared by
me or under my direct supervision and that I
am a duly Licensed Professional Engineer
under the laws of the State of Minnesota

Name

Brian N. Molinaro
Brian N. Molinaro

Reg. No.

47504

Date

04-12-2024

Revisions

1. 04-30-2024 Sign Count
2. 05-08-2024 County Comments
3. 06-05-2024 City Comments
4. 06-21-2024 County Comments

Date

04-12-2024

Designed

NAP

Drawn

BNM

TURN LANE SECTIONS

DRP MN 1, LLC.
16305 36TH AVE. N, SUITE 600
PLYMOUTH, MINNESOTA 55446

HARMONY FARMS 2ND ADDITION
RAMSEY, MINNESOTA

TL5 OF

5