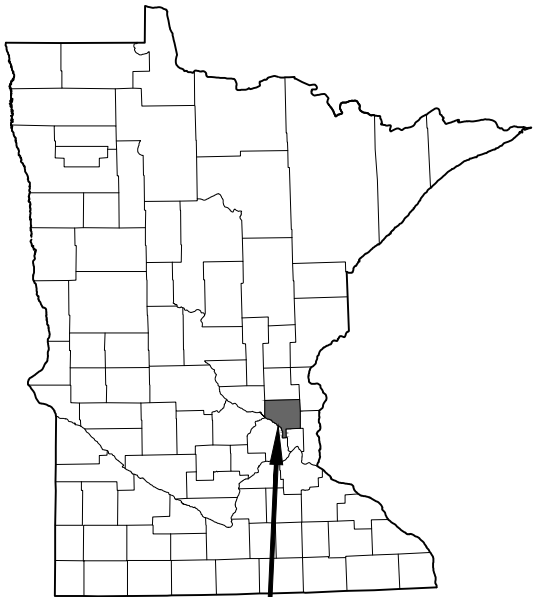
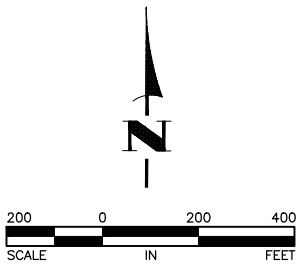
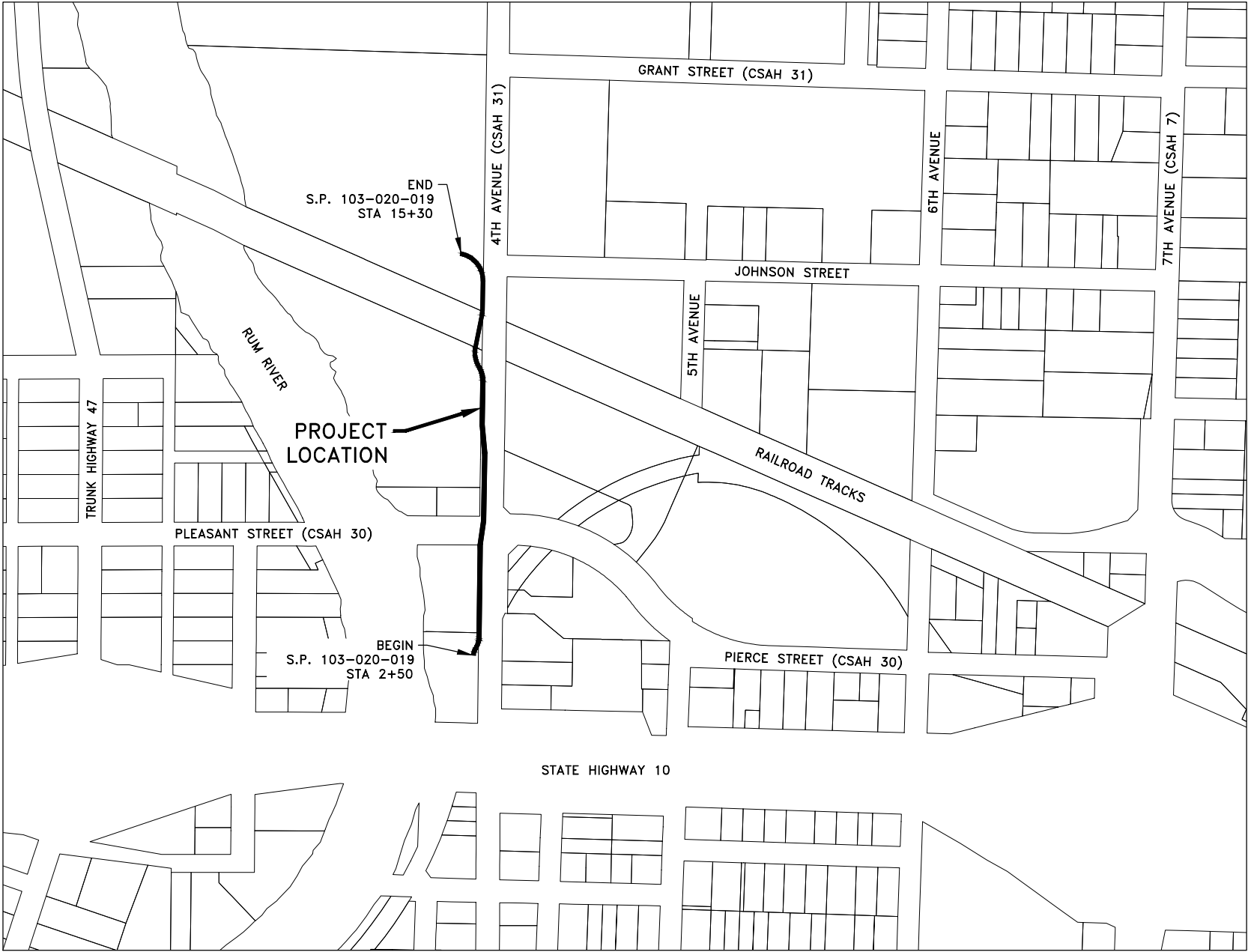


MINNESOTA DEPARTMENT OF TRANSPORTATION
CITY OF ANOKA

CONSTRUCTION PLANS FOR GRADING, AGGREGATE BASE, BITUMINOUS SURFACING,
CURB & GUTTER, SIGNING, STRIPING AND MISCELLANEOUS CONSTRUCTION
4TH AVENUE TRAIL CONSTRUCTION PROJECT

S.P. 103-020-019 LOCATED ON CSAH 31 (4TH AVENUE) FROM JOHNSON STREET TO 300-FEET SOUTH OF CSAH 30 (PIERCE STREET)
SETION 6, TOWNSHIP 31, RANGE 24



CITY OF ANOKA,
ANOKA COUNTY,
MINNESOTA

THE SUBSURFACE UTILITY INFORMATION
IN THIS PLAN IS UTILITY QUALITY LEVEL
D. THIS QUALITY LEVEL WAS DETERMINED
ACCORDING TO THE GUIDELINES OF
CI/ASCE 38-22, ENTITLED "STANDARD
GUIDELINES FOR THE COLLECTION AND
DEPICTION OF EXISTING SUBSURFACE
UTILITY DATA."

MINN. PROJ. NO. CRP 0225 (277)

GOVERNING SPECIFICATIONS

THE 2025 EDITION OF THE MINNESOTA DEPARTMENT OF TRANSPORTATION
"STANDARD SPECIFICATIONS FOR CONSTRUCTION" SHALL GOVERN.

ALL TRAFFIC CONTROL DEVICES SHALL CONFORM TO THE LATEST
MINNESOTA MANUAL ON UNIFORM TRAFFIC CONTROL DEVICES, INCLUDING
THE LATEST "FIELD MANUAL FOR TEMPORARY TRAFFIC CONTROL ZONE
LAYOUTS".

SEE SHEET 3 FOR THE PROJECT LEGEND.

SHEET INDEX

THIS PLAN CONTAINS 49 SHEETS

SHEET NO.	DESCRIPTION
1	TITLE SHEET
2	ESTIMATED QUANTITIES AND TABULATIONS
3	CONSTRUCTION NOTES AND PROJECT LEGEND
4-7	DETAILS
8	EARTHWORK SUMMARY AND TABULATIONS
9-14	PEDESTRIAN CURB RAMP DETAILS
15-18	DRIVEWAY AND SIDEWALK DETAILS
19-20	SQUARE-TUBE SIGN MOUNTING DETAILS
21	SHEAR BOLT BASE DETAIL
22	SIGN INSTALLATION AND PLACEMENT DETAIL
23	PAVEMENT MARKING PLACEMENT DETAILS
24	STRIPING NOTES AND DETAILS
25-26	TRAFFIC CONTROL PLAN-PHASE 1
27	TRAFFIC CONTROL PLAN-PHASE 2
28	PEDESTRIAN DETOUR PLAN
29	ALIGNMENT PLAN AND TABULATION
30-31	EXISTING TOPOGRAPHY AND REMOVALS PLAN
32-34	CONSTRUCTION PLAN
35-36	RAILROAD CROSSING CONSTRUCTION PLAN
37	PEDESTRIAN RAMP CONSTRUCTION PLAN
38-40	DRIVEWAY APPROACH CONSTRUCTION PLAN
41-42	SIGNAGE AND STRIPING PLAN
43	ELECTRICAL CONDUIT PLAN
X1-X6	CROSS SECTIONS

09/04/2025

APPROVED: ANOKA COUNTY ENGINEER

DATE

DISTRICT STATE AID ENGINEER: REVIEWED FOR COMPLIANCE WITH STATE AID
AND/OR FEDERAL AID RULES/POLICY

DATE

STATE AID ENGINEER: APPROVED FOR STATE AID AND/OR FEDERAL AID FUNDING

9/2/25

APPROVED: GREG LEE
ANOKA CITY MANAGER

I hereby certify that this plan, specification, or report was prepared
by me or under my direct supervision and that I am a duly Licensed
Professional Engineer under the laws of the State of Minnesota.

23461
LIC. NO.

DATE 9/2/25

CRAIG J. JOCHUM, P.E.
HAKANSON ANDERSON
DESIGN ENGINEER

DATE	REVISION
------	----------

S.P. 103-020-019

SHEET 1 OF 43 SHEETS

AN723



Civil Engineers and Land Surveyors
3601 Thurston Ave., Anoka, Minnesota 55303
763-427-5860 FAX 763-427-0520

PROJECT	STA. TO STA.	GROSS LENGTH (FEET)	BRIDGE LENGTH (FEET)	EXCEPTION LENGTH (FEET)	NET LENGTH (FEET)	NET LENGTH (MILES)	DESIGN SPEED	CLASSIFICATION
S.P. 103-020-019 4TH AVENUE TRAIL	2+50 TO 15+30	1280	0	0	1280	0.242	20	SHARED USE PATH

STOPPING SIGHT DISTANCE BASED ON:
4.5 FT - HEIGHT OF EYE
0.0 FT - HEIGHT OF OBJECT