

DISTURBED AREA  
= 1.4 ACRES

AFTER INITIAL GRADING, COMPLETELY  
SURROUND THE INFILTRATION BASIN  
WITH PERIMETER CONTROL TO PREVENT  
COMPACTION DURING CONSTRUCTION.

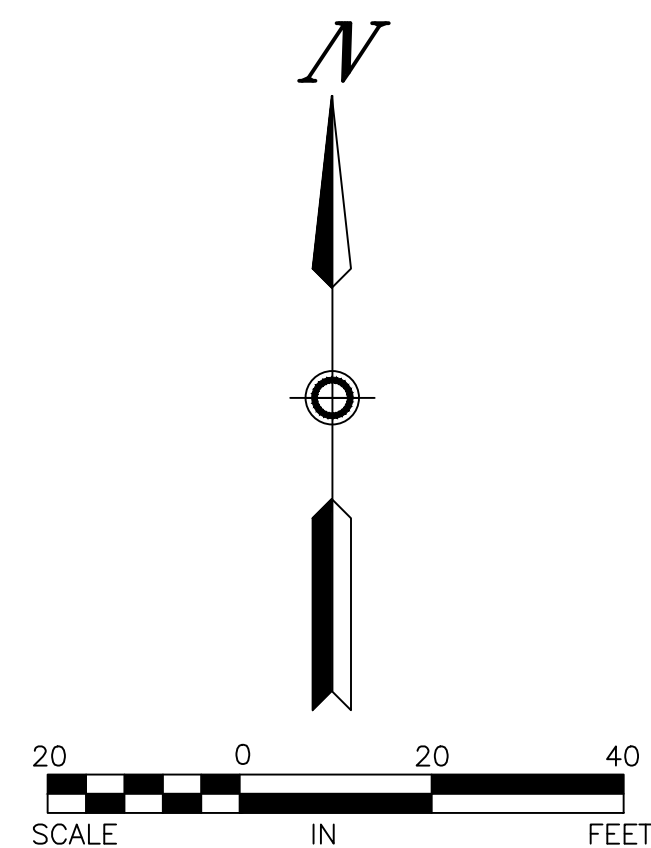
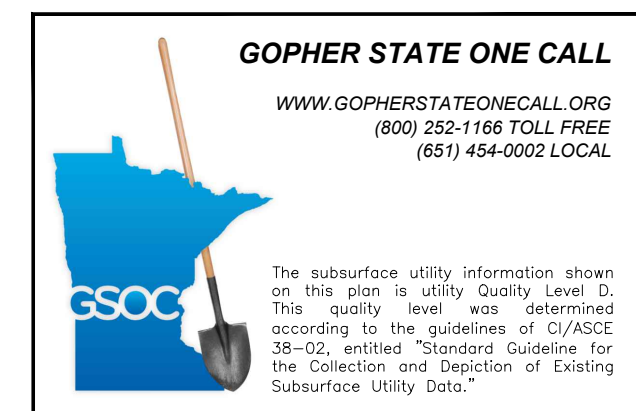
THE OWNER SHALL SUBMIT AS-BUILTS  
FOR THE STORMWATER MANAGEMENT  
PRACTICES AND ASSOCIATED  
STRUCTURES OF THE SITE TO THE  
WATERSHED DISTRICT UPON COMPLETION  
OF THE PROJECT AS A CONDITION OF  
THEIR PERMIT.

ADDITIONALLY, THE OWNER SHALL  
COMPLETE A POST CONSTRUCTION  
INFILTRATION TEST ON THE INFILTRATION  
BASIN TO A MINIMUM DEPTH OF 6  
INCHES WITH WATER AND BY  
MONITORING THE TIME NECESSARY TO  
DRAIN, OR MULTIPLE DOUBLE RING  
INFILTRATION TESTS TO ASTM  
STANDARDS. THE COON CREEK  
WATERSHED DISTRICT SHALL BE  
NOTIFIED PRIOR TO THE TEST TO  
WITNESS THE RESULTS.

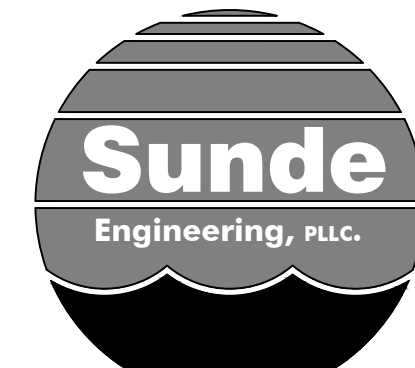
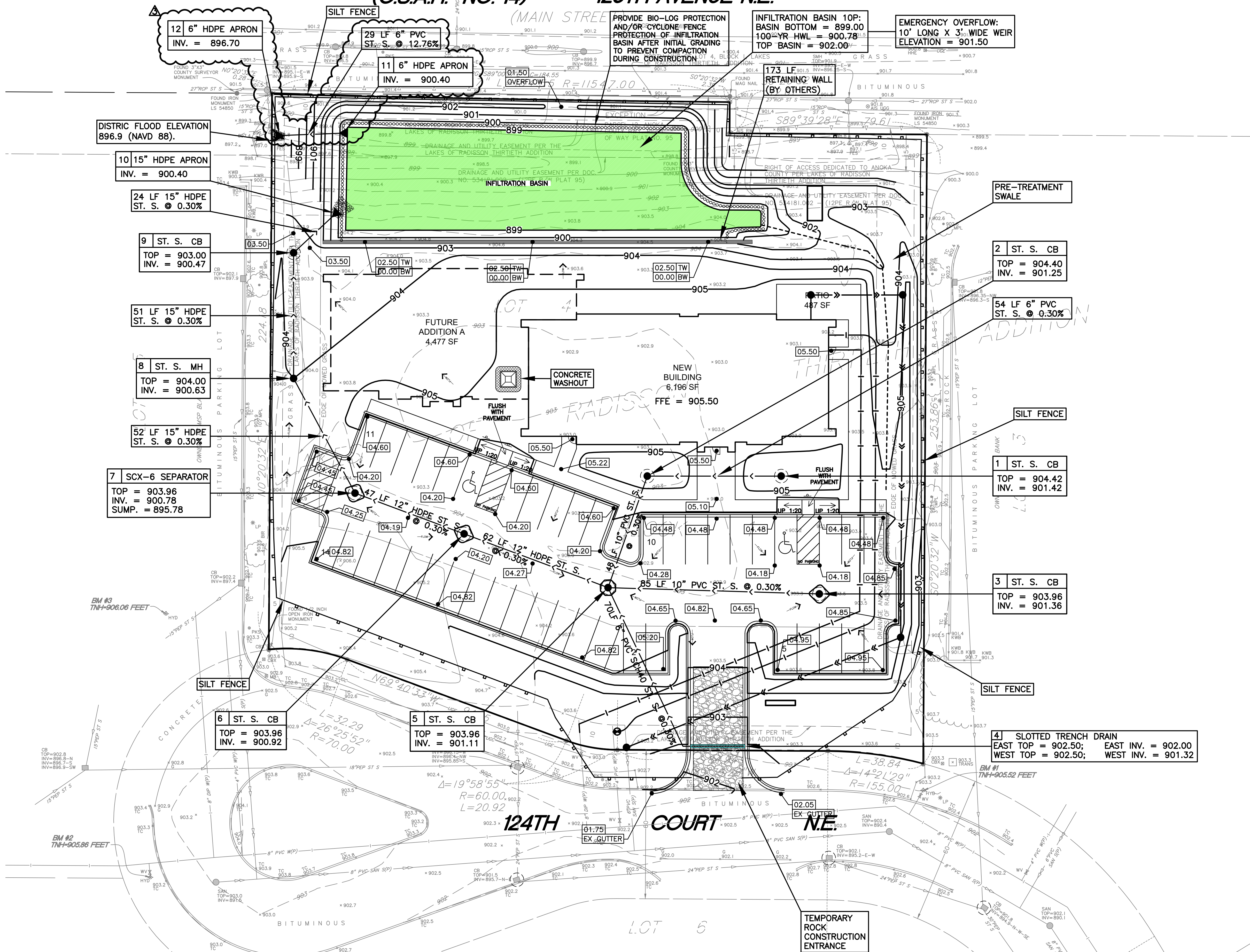
NO ROOF DRAINS SHALL DISCHARGE  
OVER SIDEWALKS.

SOUTH BUILDING ELEVATION SHALL  
DAYLIGHT ON GRADE AND RUNOFF TO  
BE DIRECTED TO CATCH BASINS #1  
AND #2 PRIOR TO FLOW OVER  
SIDEWALK BETWEEN PARKING LOT AND  
BUILDING.

SILT SACK INLET  
PROTECTION



ANOKA COUNTY HIGHWAY RIGHT OF WAY PLAT NO. 46  
(C.S.A.H. NO. 14) 125TH AVENUE N.E.  
(MAIN STREET)



CIVIL AND ENVIRONMENTAL  
ENGINEERING SERVICES  
10830 NESBITT AVENUE SOUTH  
BLOOMINGTON, MINNESOTA 55437  
(952) 881-3344 TELEPHONE  
(952) 881-1913 FAX  
www.sundecivil.com

STONE ARCH  
DENTAL

BLAINE, MN

DATE	REVISION
3/28/25	ORIGINAL PLAN DATE
4/18/25	WATERSHED APPLIC.
5/14/25	WATERSHED COMMENTS
5/29/25	WATERSHED RE-SUBMITTAL
8/8/25	REVISION 1
8/15/25	REVISION 2
8/26/25	REVISION 3

I HEREBY CERTIFY THAT THIS PLAN,  
SPECIFICATION, OR REPORT WAS PREPARED  
BY ME OR UNDER MY DIRECT SUPERVISION  
AND THAT I AM A DULY LICENSED  
PROFESSIONAL ENGINEER UNDER THE LAWS  
OF THE STATE OF MINNESOTA.

Mike R. Kettler  
DATE: 3/28/25 REG. NO.: 40425

INFORMATION:  
PROJECT NO.: 24-546  
DRAWN BY:  
CHECKED BY: MK  
APPROVED BY: MK  
SCALE:  
DATE:

DESCRIPTION:  
GRADING,  
DRAINAGE, AND  
EROSION CONTROL  
PLAN

SHEET NO:

C2

20F6