

VIKING MEADOWS

CONSTRUCTION PLANS FOR TURN LANES INCLUDING; GRADING, STORM SEWER, STREETS, SIGNING AND STRIPING EAST BETHEL, MINNESOTA

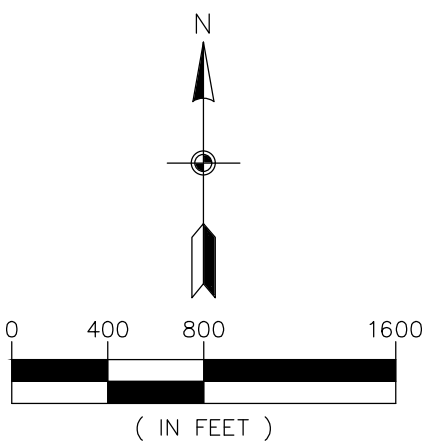


APPROVED: ANOKA COUNTY ENGINEER DATE

SHEET INDEX

- T1. COVER
- T2. REMOVALS & GRADING, DRAINAGE & EROSION CONTROL PLAN
- T3. SITE & UTILITY PLAN
- T4. SIGNING & STRIPING PLAN
- T5. CROSS SECTIONS
- T6. TRAFFIC CONTROL PLAN

BENCHMARK
1. Minnesota Department of Transportation Geodetic GSD Station No. 769 (MnDot Name DENN MND1) - Elevation = 899.19 ft. (NAVD88)
2. Anoka County Benchmark No. 2041 Elevation = 909.39 ft. (NAVD88)



CALL BEFORE YOU DIG

Know what's below.
Call before you dig.

The subsurface utility information shown on this plan is utility Quality Level D. This quality level was determined according to the guidelines of CI/ASCE 38-02, entitled "Standard Guideline for the Collection and Depiction of Existing Subsurface Utility Data."

CARLSON ENGINEERING

ENGINEERING
SURVEYING
PLANNING

3890 PHEASANT RIDGE DR NE
SUITE 100
BLAINE, MN 55449
TEL 763.489.7900
FAX 763.489.7959
CARLSON-ENGINEERING.COM

I hereby certify that this plan, specification or report was prepared by me or under my direct supervision and that I am a duly Licensed Professional Engineer under the laws of the State of Minnesota

Print Name: Aaron D. Briski, P.E.
Signature: *Aaron Briski*
Date: 4/26/24 License #: 57811

Drawn: GJS
Designed: ADB
Date: 4/26/24

Revisions:
1. 5/10/24 Per ACHD Comments
2. 7/10/24 Per ACHD Comments
3. 8/25/25 Per Second Addition
4. 12/4/25 Per ACHD Comments

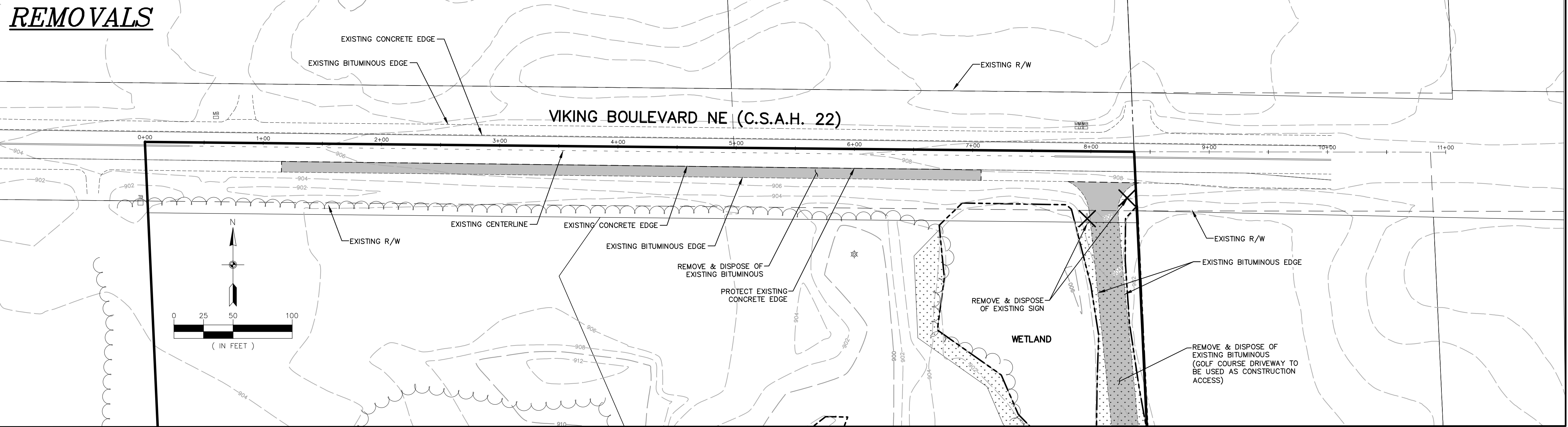
EAST BETHEL 648-1 LAND, LLC
14015 Sunfish Lake Blvd. NW, Suite 400
Ramsey, MN 55303

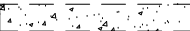

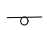




VIKING MEADOWS
East Bethel, MN

COVER SHEET

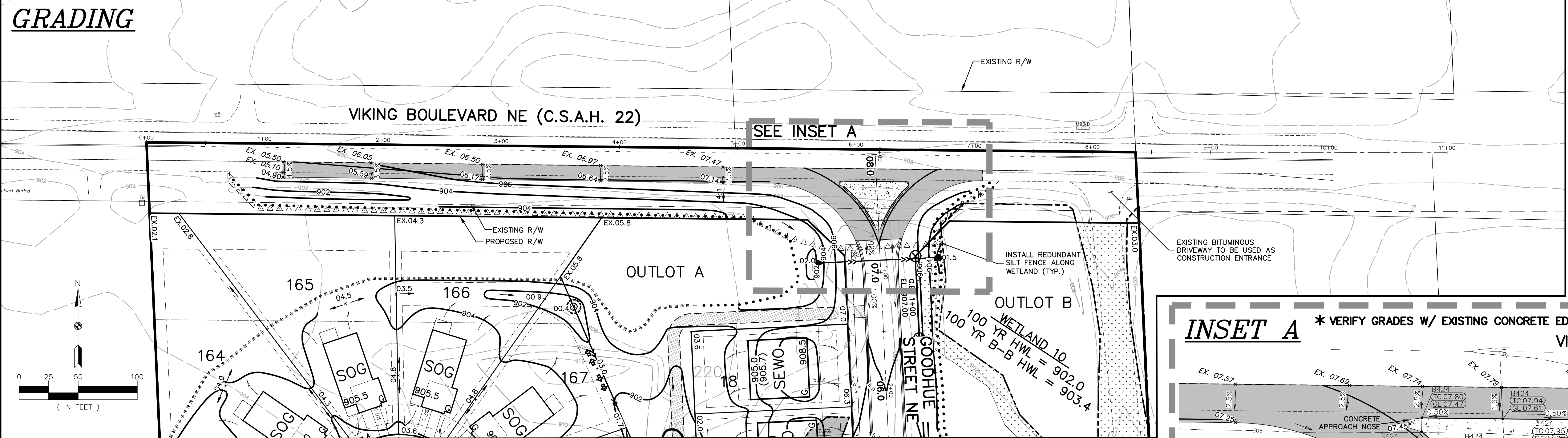
T1
of
T6

REMOVALS



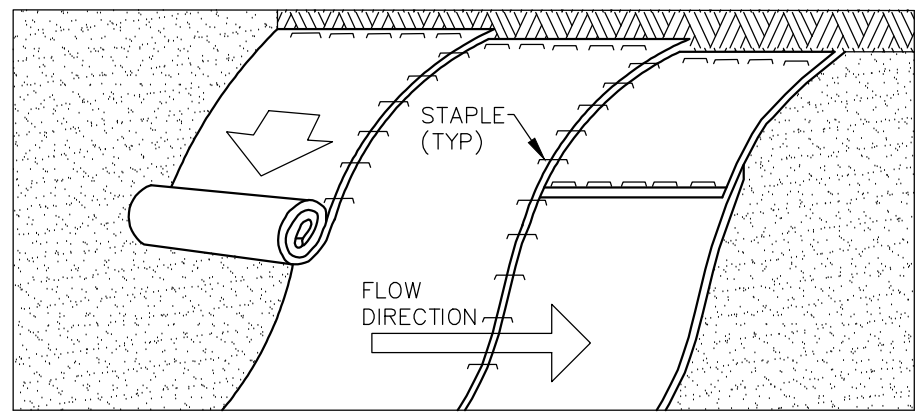
	EXISTING	REMOVALS
PROPERTY LINE	_____	_____
EASEMENT LINE	_____	_____
SAWCUT	_____	_____
BITUMINOUS	_____	_____
CONCRETE CURB & GUTTER	_____	_____
CONCRETE		_____
SANITARY SEWER	_____>_____	_____
STORM SEWER	_____>>_____	_____
WATER MAIN	_____— _____	_____
OVERHEAD UTILITY	_____ohw_____	_____
UNDERGROUND TELEPHONE	—ut——ut——	_____
UNDERGROUND FIBEROPTIC	_____ufw_____	_____
UNDERGROUND GAS	—ug——ug——	_____
STORM CATCH BASIN		_____
SIGN		✕
HYDRANT		_____
GATE VALVE		_____
TELEPHONE BOX		_____
UTILITY POLE	_____U _{PO} _____	_____
FENCE	—x——x——	_____
GRAVEL EDGE	_____	_____
STRIPING	_____	_____
5' CONTOUR	_____	_____
1' CONTOUR	_____	_____
WETLAND LINE		_____
SPOT ELEVATION	—+2.2—+— X —+2.2—+—	_____

GRADING



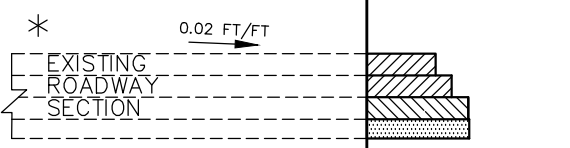
	EXISTING	PROPOSED
PROPERTY LINE	_____	_____
EASEMENT LINE	=====	=====
CURB LINE	=====	=====
GRADING LIMITS	_____	△△△△△△△△
BITUMINOUS	[]	[]
CONCRETE	[]	[]
SANITARY SEWER	—>—>—>—>—>—	—>—
STORM SEWER	—>>—	—>>—
WATER MAIN	— —	— —
OVERHEAD UTILITY	—○—	—○—
UNDERGROUND TELEPHONE	—ut—	—ut—
UNDERGROUND FIBEROPTIC	—ufo—	—ufo—
UNDERGROUND GAS	—ug—	—ug—
STORM CATCH BASIN		
STORM MANHOLE		
HYDRANT		
GATE VALVE		
TELEPHONE BOX		
UTILITY POLE		
FENCE	— x — x —	— x — x —
GRAVEL EDGE	_____	_____
5' CONTOUR	_____	_____
1' CONTOUR	_____	_____
WETLAND LINE	_____	_____
SPOT ELEVATION		
SIGN		

EROSION CONTROL BLANKET



SAWCUT & MILLING DETAIL

NOT TO SCALE



* CONCRETE OVERLAY
FOR EX. THRU LANES

NOTES:

1. PREPARE SOIL BEFORE INSTALLING BLANKETS, INCLUDING APPLICATION OF LIME, FERTILIZER AND/OR SEED.
2. BEGIN AT THE TOP OF THE SLOPE (OR CHANNEL) BY ANCHORING THE BLANKET IN A 6" DEEP X 6" WIDE TRENCH. BACKFILL AND COMPACT THE TRENCH AFTER STAPLING.
3. ROLL THE BLANKETS DOWN (STARTING DOWNSTREAM PROCEEDING UPSTREAM) HORIZONTALLY ACROSS THE SLOPE.
4. THE EDGES OF PARALLEL BLANKETS MUST BE STAPLED WITH A MINIMUM 4" OVERLAP.
5. WHEN BLANKETS MUST BE SPICED DOWN THE SLOPE, PLACE BLANKETS END OVER END (SHINGLE STYLE) WITH MINIMUM 6" OVERLAP. USE A DOUBLE ROW OF STAGGERED STAPLES 4" APART TO SECURE BLANKETS.
6. IN HIGH FLOW CHANNEL APPLICATIONS, A STAPLE CHECK SLOT IS RECOMMENDED AT 30 TO 40 FOOT INTERVALS. USE A ROW OF STAPLES 4" APART OVER ENTIRE WIDTH OF THE CHANNEL. PLACE A SECOND ROW 4" BELOW THE FIRST ROW IN A STAGGERED PATTERN.
7. THE TERMINAL ENDS OF THE BLANKETS MUST BE ANCHORED IN A 6" DEEP X 6" WIDE TRENCH. BACKFILL AND COMPACT THE TRENCH AFTER STAPLING.
8. CONTRACTOR TO CONTACT ANOKA COUNTY HIGHWAY DEPARTMENT 3 BUSINESS DAYS PRIOR TO ANY WORK WITHIN THE RIGHT-OF-WAY.

*** CONTRACTOR TO VERIFY UNDERGROUND UTILITIES PRIOR TO COMMENCEMENT OF ANY EXCAVATION.**

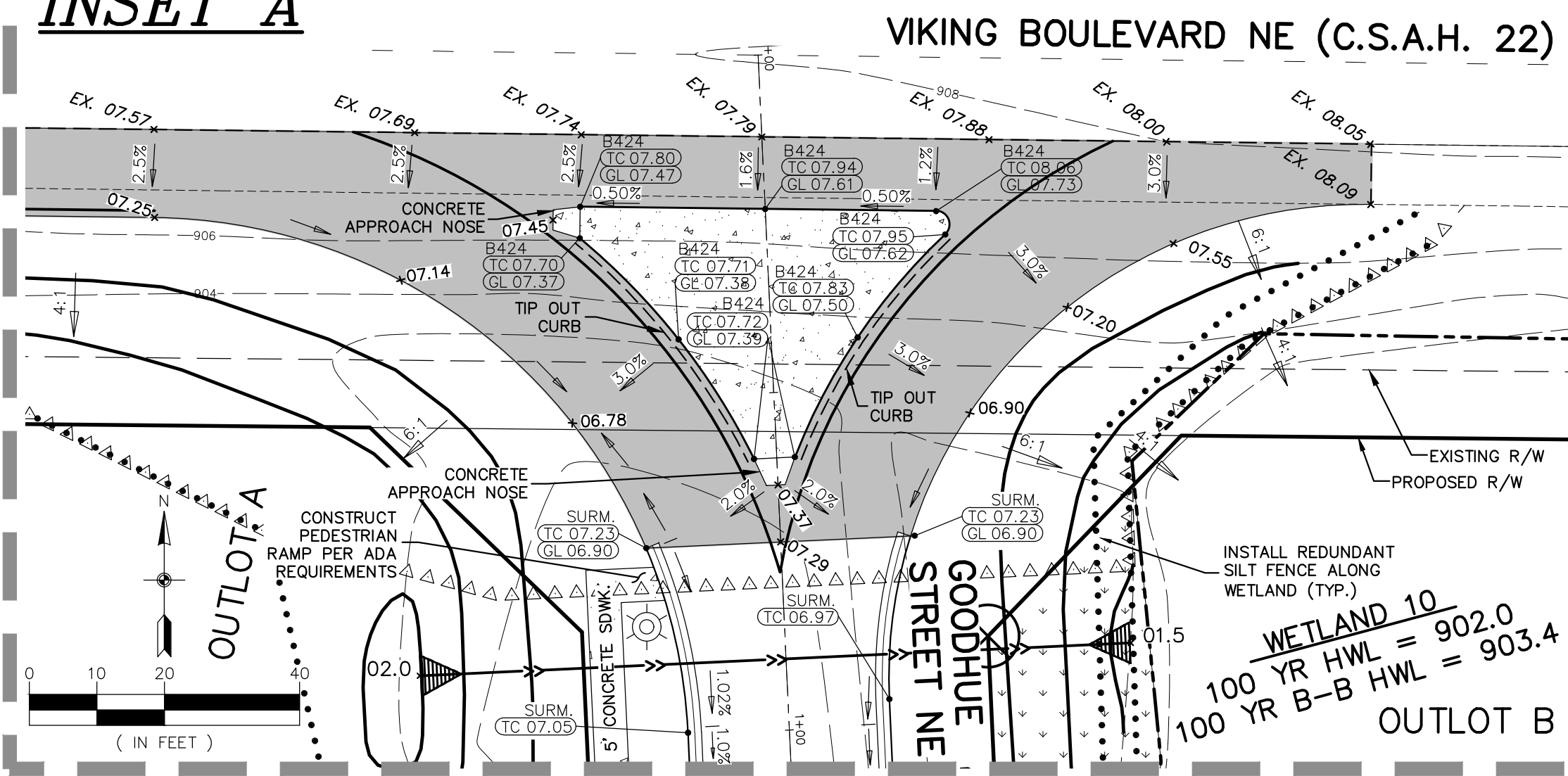
COORDINATE WITH UTILITY COMPANIES
FOR RELOCATION OF ANY UNDERGROUND
UTILITIES UNDER PROPOSED ROAD.

BENCHMARK

1. Minnesota Department of Transportation
Geodetic GSID Station No. 769
(MnDot Name DENN MNDT) –
Elevation = 899.19 ft. (NAVD88)
2. Anoka County Benchmark No. 2041
Elevation = 909.39 ft. (NAVD88)

INSET A

* VERIFY GRADES W/ EXISTING CONCRETE EDGE



**3890 PHEASANT RIDGE DR NE
SUITE 100
BLAINE, MN 55449
TEL 763.489.7900
FAX 763.489.7959
CARLSON-ENGINEERING.COM**

I hereby certify that this plan, specification or report was prepared by me or under my direct supervision and that I am a duly Licensed Professional Engineer under the laws of the State of Minnesota

Print Name: Aaron D. Briski, P.E.

Signature: Aaron Benz

Date: 4/26/24 License #: 5781

Drawn: GJS

Designed: ADE

Date: 4/26/2018

Revisions:

1. 5/10/24 Per ACHD Comments
2. 7/10/24 Per ACHD Comments
3. 8/25/25 Per Second Addition
4. 12/4/25 Per ACHD Comments

EAST BETHEL 648-1 LAND, LLC

14015 Sunfish Lake Blvd. NW, Suite 400
Ramsey, MN 55303

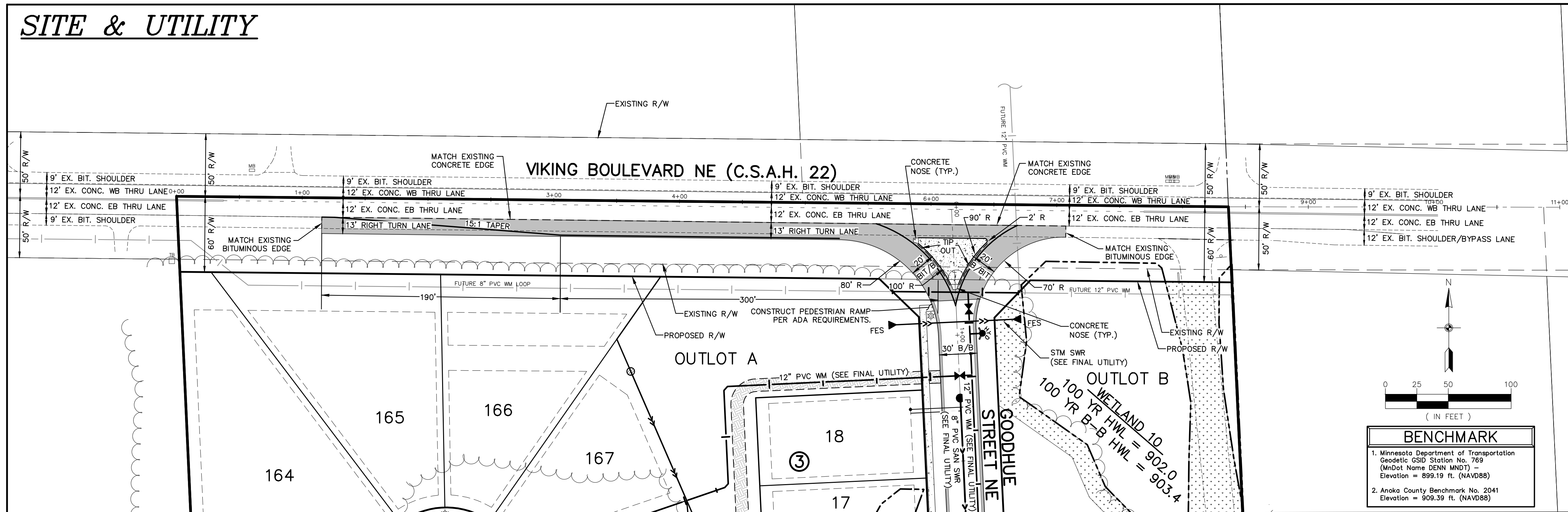
VIKING MEADOWS

East Bethel, MN

REMOVALS & GRADING, DRAINAGE & EROSION CONTROL PLAN

T2 of T6

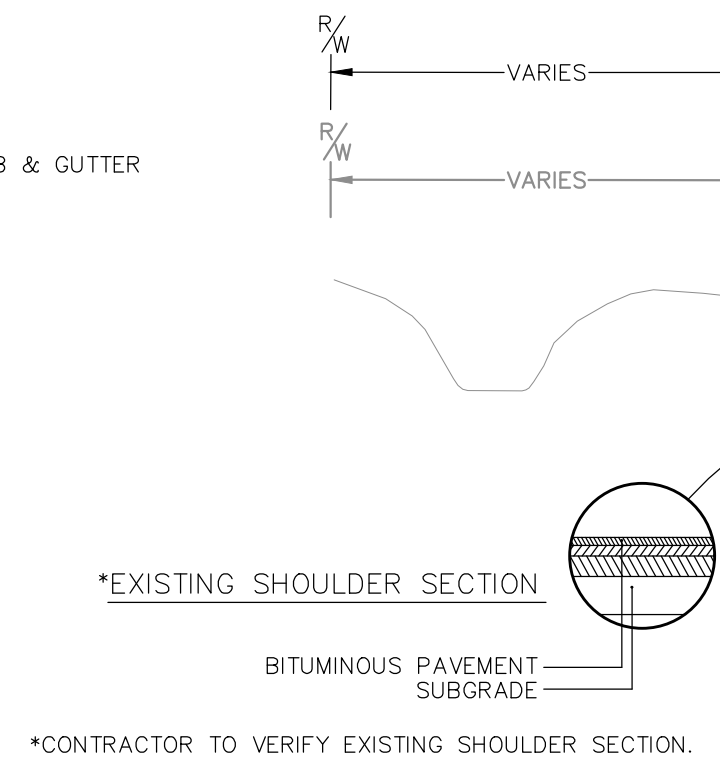
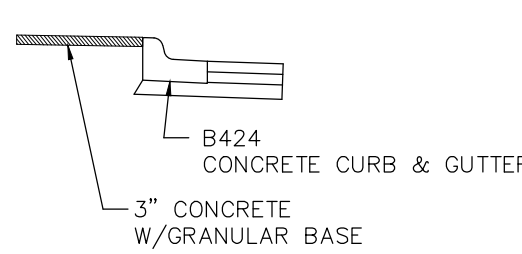
SITE & UTILITY



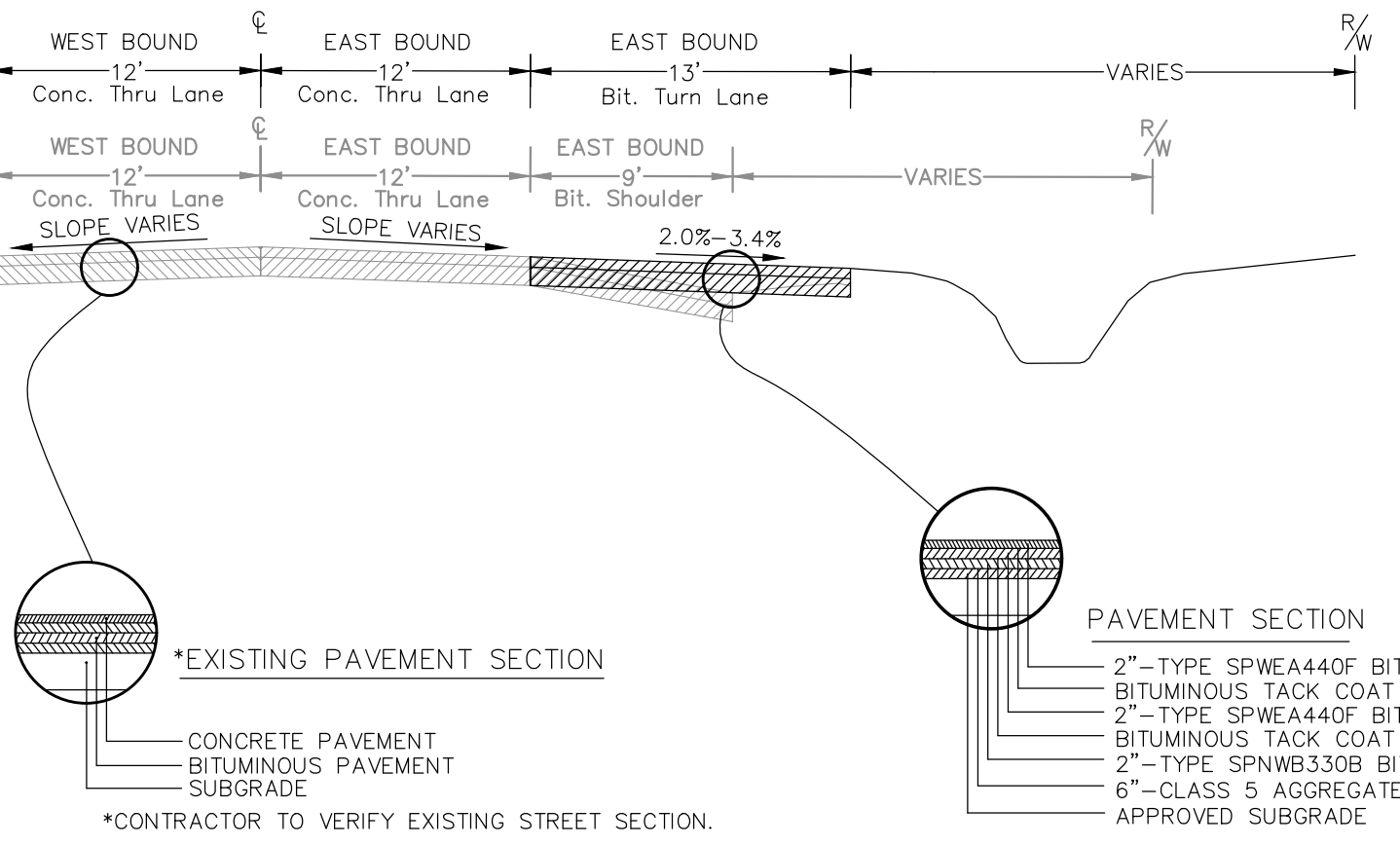
CURB TYPES LEGEND	
	BITUMINOUS EDGE
	B424 CONCRETE CURB & GUTTER
	B424 CONCRETE CURB & GUTTER (TIP OUT)
	B618 CONCRETE CURB & GUTTER
	SURMOUNTABLE CONCRETE CURB & GUTTER

LEGEND	
EXISTING	PROPOSED
PROPERTY LINE	PROPERTY LINE
EASEMENT LINE	EASEMENT LINE
CURB LINE	CURB LINE
BITUMINOUS	BITUMINOUS
GRAVEL	GRAVEL
CONCRETE	CONCRETE
SANITARY SEWER	SANITARY SEWER
FORCEMAIN	FORCEMAIN
STORM SEWER	STORM SEWER
WATER MAIN	WATER MAIN
OVERHEAD UTILITY	OVERHEAD UTILITY
UNDERGROUND TELEPHONE	UNDERGROUND TELEPHONE
UNDERGROUND FIBEROPTIC	UNDERGROUND FIBEROPTIC
UNDERGROUND GAS	UNDERGROUND GAS
STORM CATCH BASIN	STORM CATCH BASIN
STORM MANHOLE	STORM MANHOLE
HYDRANT	HYDRANT
GATE VALVE	GATE VALVE
TELEPHONE BOX	TELEPHONE BOX
UTILITY POLE	UTILITY POLE
FENCE	FENCE
GRAVEL EDGE	GRAVEL EDGE
STRIPING	STRIPING
WETLAND LINE	WETLAND LINE
SIGN	SIGN
TREELINE	TREELINE

MEDIAN SECTION



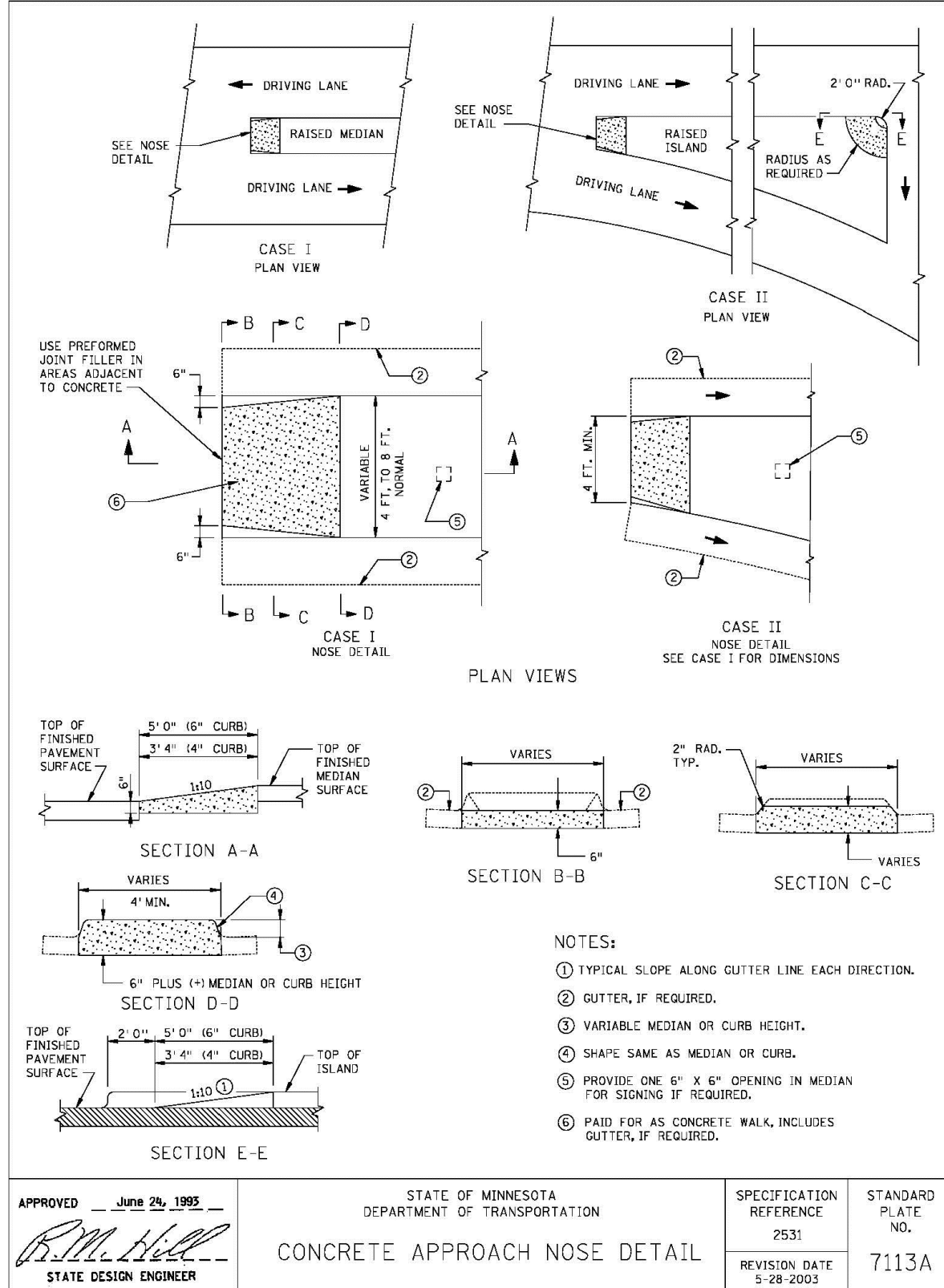
TURN LANE SECTION



TURN LANE NOTES

- ALL GRADES ARE TO FINISHED PAVEMENT UNLESS OTHERWISE NOTED.
- GOVERNING SPECIFICATIONS SHALL BE THE LATEST EDITION OF THE MINNESOTA DEPARTMENT OF TRANSPORTATION "STANDARD SPECIFICATIONS FOR CONSTRUCTION".
- ALL TEMPORARY TRAFFIC CONTROL DEVICES AND ALL PERMANENT SIGNING & MARKINGS SHALL CONFORM TO THE MUTCD, INCLUDING "FIELD MANUAL FOR TEMPORARY TRAFFIC CONTROL ZONE LAYOUTS, 2018".
- CONTRACTOR SHALL NOTIFY ANOKA COUNTY HIGHWAY DEPARTMENT AND SUBMIT A TRAFFIC CONTROL PLAN FOR APPROVAL PRIOR TO PERFORMING ANY WORK WITHIN THE COUNTY RIGHT-OF-WAY.
- CONTRACTOR SHALL REMOVE ALL CONFLICTING PAVEMENT MARKINGS.
- ALL TURN LANE STRIPING SHALL BE COMPLETED USING EPOXY PAINT.
- CONTRACTOR SHALL COORDINATE WORK AROUND AND RELOCATION OF SMALL UTILITIES.
- CONTRACTOR TO CONTACT ANOKA COUNTY HIGHWAY DEPARTMENT 3 BUSINESS DAYS PRIOR TO ANY WORK WITHIN THE RIGHT-OF-WAY.

DESIGN B		DESIGN V	
DIMENSIONS	CONCRETE	DIMENSIONS	CONCRETE
H 1' 0" 1' 0" 1' 0" 1' 0" 1' 0"	0.0401 0.0401 0.0401 0.0401 0.0401	H 1' 0" 1' 0" 1' 0" 1' 0" 1' 0"	0.0401 0.0401 0.0401 0.0401 0.0401
A 1' 0" 1' 0" 1' 0" 1' 0" 1' 0"	0.0401 0.0401 0.0401 0.0401 0.0401	A 1' 0" 1' 0" 1' 0" 1' 0" 1' 0"	0.0401 0.0401 0.0401 0.0401 0.0401
B 1' 0" 1' 0" 1' 0" 1' 0" 1' 0"	0.0401 0.0401 0.0401 0.0401 0.0401	B 1' 0" 1' 0" 1' 0" 1' 0" 1' 0"	0.0401 0.0401 0.0401 0.0401 0.0401
C 1' 0" 1' 0" 1' 0" 1' 0" 1' 0"	0.0401 0.0401 0.0401 0.0401 0.0401	C 1' 0" 1' 0" 1' 0" 1' 0" 1' 0"	0.0401 0.0401 0.0401 0.0401 0.0401
D 1' 0" 1' 0" 1' 0" 1' 0" 1' 0"	0.0401 0.0401 0.0401 0.0401 0.0401	D 1' 0" 1' 0" 1' 0" 1' 0" 1' 0"	0.0401 0.0401 0.0401 0.0401 0.0401
E 1' 0" 1' 0" 1' 0" 1' 0" 1' 0"	0.0401 0.0401 0.0401 0.0401 0.0401	E 1' 0" 1' 0" 1' 0" 1' 0" 1' 0"	0.0401 0.0401 0.0401 0.0401 0.0401
F 1' 0" 1' 0" 1' 0" 1' 0" 1' 0"	0.0401 0.0401 0.0401 0.0401 0.0401	F 1' 0" 1' 0" 1' 0" 1' 0" 1' 0"	0.0401 0.0401 0.0401 0.0401 0.0401
G 1' 0" 1' 0" 1' 0" 1' 0" 1' 0"	0.0401 0.0401 0.0401 0.0401 0.0401	G 1' 0" 1' 0" 1' 0" 1' 0" 1' 0"	0.0401 0.0401 0.0401 0.0401 0.0401
H 1' 0" 1' 0" 1' 0" 1' 0" 1' 0"	0.0401 0.0401 0.0401 0.0401 0.0401	H 1' 0" 1' 0" 1' 0" 1' 0" 1' 0"	0.0401 0.0401 0.0401 0.0401 0.0401
I 1' 0" 1' 0" 1' 0" 1' 0" 1' 0"	0.0401 0.0401 0.0401 0.0401 0.0401	I 1' 0" 1' 0" 1' 0" 1' 0" 1' 0"	0.0401 0.0401 0.0401 0.0401 0.0401
J 1' 0" 1' 0" 1' 0" 1' 0" 1' 0"	0.0401 0.0401 0.0401 0.0401 0.0401	J 1' 0" 1' 0" 1' 0" 1' 0" 1' 0"	0.0401 0.0401 0.0401 0.0401 0.0401
K 1' 0" 1' 0" 1' 0" 1' 0" 1' 0"	0.0401 0.0401 0.0401 0.0401 0.0401	K 1' 0" 1' 0" 1' 0" 1' 0" 1' 0"	0.0401 0.0401 0.0401 0.0401 0.0401
L 1' 0" 1' 0" 1' 0" 1' 0" 1' 0"	0.0401 0.0401 0.0401 0.0401 0.0401	L 1' 0" 1' 0" 1' 0" 1' 0" 1' 0"	0.0401 0.0401 0.0401 0.0401 0.0401
M 1' 0" 1' 0" 1' 0" 1' 0" 1' 0"	0.0401 0.0401 0.0401 0.0401 0.0401	M 1' 0" 1' 0" 1' 0" 1' 0" 1' 0"	0.0401 0.0401 0.0401 0.0401 0.0401
N 1' 0" 1' 0" 1' 0" 1' 0" 1' 0"	0.0401 0.0401 0.0401 0.0401 0.0401	N 1' 0" 1' 0" 1' 0" 1' 0" 1' 0"	0.0401 0.0401 0.0401 0.0401 0.0401
O 1' 0" 1' 0" 1' 0" 1' 0" 1' 0"	0.0401 0.0401 0.0401 0.0401 0.0401	O 1' 0" 1' 0" 1' 0" 1' 0" 1' 0"	0.0401 0.0401 0.0401 0.0401 0.0401
P 1' 0" 1' 0" 1' 0" 1' 0" 1' 0"	0.0401 0.0401 0.0401 0.0401 0.0401	P 1' 0" 1' 0" 1' 0" 1' 0" 1' 0"	0.0401 0.0401 0.0401 0.0401 0.0401
Q 1' 0" 1' 0" 1' 0" 1' 0" 1' 0"	0.0401 0.0401 0.0401 0.0401 0.0401	Q 1' 0" 1' 0" 1' 0" 1' 0" 1' 0"	0.0401 0.0401 0.0401 0.0401 0.0401
R 1' 0" 1' 0" 1' 0" 1' 0" 1' 0"	0.0401 0.0401 0.0401 0.0401 0.0401	R 1' 0" 1' 0" 1' 0" 1' 0" 1' 0"	0.0401 0.0401 0.0401 0.0401 0.0401
S 1' 0" 1' 0" 1' 0" 1' 0" 1' 0"	0.0401 0.0401 0.0401 0.0401 0.0401	S 1' 0" 1' 0" 1' 0" 1' 0" 1' 0"	0.0401 0.0401 0.0401 0.0401 0.0401
T 1' 0" 1' 0" 1' 0" 1' 0" 1' 0"	0.0401 0.0401 0.0401 0.0401 0.0401	T 1' 0" 1' 0" 1' 0" 1' 0" 1' 0"	0.0401 0.0401 0.0401 0.0401 0.0401
U 1' 0" 1' 0" 1' 0" 1' 0" 1' 0"	0.0401 0.0401 0.0401 0.0401 0.0401	U 1' 0" 1' 0" 1' 0" 1' 0" 1' 0"	0.0401 0.0401 0.0401 0.0401 0.0401
V 1' 0" 1' 0" 1' 0" 1' 0" 1' 0"	0.0401 0.0401 0.0401 0.0401 0.0401	V 1' 0" 1' 0" 1' 0" 1' 0" 1' 0"	0.0401 0.0401 0.0401 0.0401 0.0401
W 1' 0" 1' 0" 1' 0" 1' 0" 1' 0"	0.0401 0.0401 0.0401 0.0401 0.0401	W 1' 0" 1' 0" 1' 0" 1' 0" 1' 0"	0.0401 0.0401 0.0401 0.0401 0.0401
X 1' 0" 1' 0" 1' 0" 1' 0" 1' 0"	0.0401 0.0401 0.0401 0.0401 0.0401	X 1' 0" 1' 0" 1' 0" 1' 0" 1' 0"	0.0401 0.0401 0.0401 0.0401 0.0401
Y 1' 0" 1' 0" 1' 0" 1' 0" 1' 0"	0.0401 0.0401 0.0401 0.0401 0.0401	Y 1' 0" 1' 0" 1' 0" 1' 0" 1' 0"	0.0401 0.0401 0.0401 0.0401 0.0401
Z 1' 0" 1' 0" 1' 0" 1' 0" 1' 0"	0.0401 0.0401 0.0401 0.0401 0.0401	Z 1' 0" 1' 0" 1' 0" 1' 0" 1' 0"	0.0401 0.0401 0.0401 0.0401 0.0401



CALL BEFORE YOU DIG

811

Know what's below.
Call before you dig.

The subsurface utility information shown on this plan is utility Quality Level D. This quality level was determined according to the guidelines of C/ASCE 38-02, entitled "Standard Guideline for the Collection and Depiction of Existing Subsurface Utility Data."

CARLSON
ENGINEERING
SURVEYING
PLANNING

3890 PHEASANT RIDGE DR NE
SUITE 100
BLAINE, MN 55449
TEL 763.489.7900
FAX 763.489.7959
CARLSON-ENGINEERING.COM

I hereby certify that this plan, specification or report was prepared by me or under my direct supervision and that I am a duly Licensed Professional Engineer under the laws of the State of Minnesota

Print Name: Aaron D. Briski, P.E.
Signature:
Date: 4/26/24 License #: 57811

Drawn: GJS
Designed: ADB
Date: 4/26/24

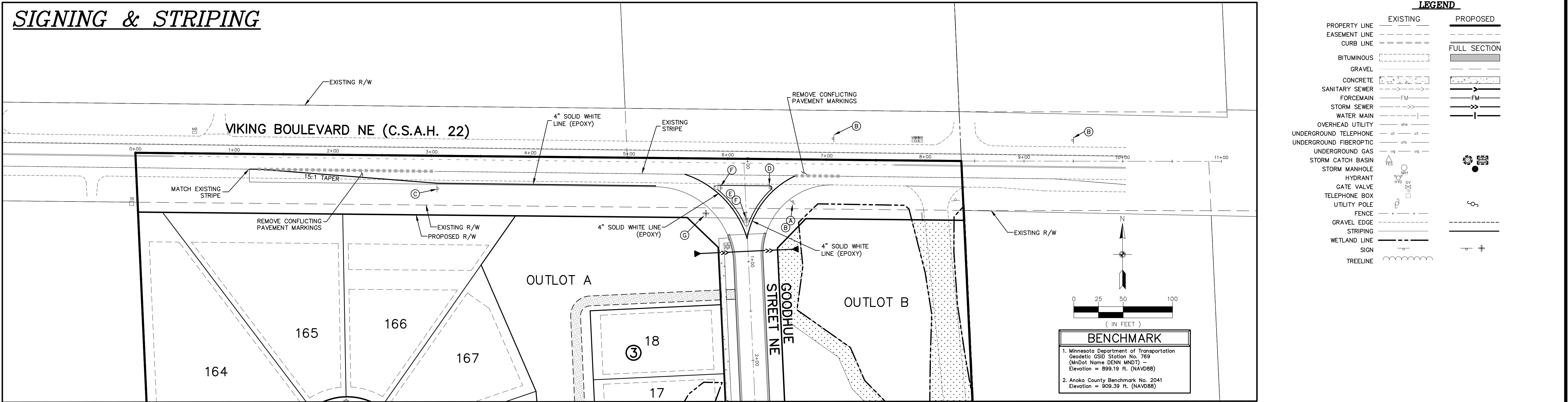
Revisions:
1. 5/10/24 Per ACHD Comments
2. 7/10/24 Per ACHD Comments
3. 8/25/25 Per Second Addition
4. 12/4/25 Per ACHD Comments

EAST BETHEL 648-1 LAND, LLC
14015 Sunfish Lake Blvd. NW, Suite 400
Ramsey, MN 55303

VIKING MEADOWS
East Bethel, MN

SITE & UTILITY PLAN

T3
of
T6



TURN LANE NOTES

- ALL GRADES ARE TO FINISHED PAVEMENT UNLESS OTHERWISE NOTED.
- THE 2018 EDITION OF THE MINNESOTA DEPARTMENT OF TRANSPORTATION "STANDARD SPECIFICATIONS FOR CONSTRUCTION" SHALL GOVERN AS WELL AS THE CITY OF BLAINE SPECIFICATIONS.
- ALL TEMPORARY TRAFFIC CONTROL DEVICES AND SIGNING SHALL CONFORM TO THE MMUTCD, INCLUDING "FIELD MANUAL FOR TEMPORARY TRAFFIC CONTROL ZONE LAYOUTS, 2018"
- CONTRACTOR TO OBTAIN A PERMIT FROM ANOKA COUNTY HIGHWAY DEPARTMENT PRIOR TO PERFORMING ANY WORK WITHIN THE COUNTY RIGHT-OF-WAY.
- ALL TURN LANE STRIPING SHALL BE COMPLETED USING EPOXY PAINT.
- CONTRACTOR SHALL REMOVE ALL CONFLICTING PAVEMENT MARKINGS.
- CONTRACTOR SHALL COORDINATE WORK AROUND AND RELOCATION OF SMALL UTILITIES.
- CONTRACTOR SHALL COORDINATE RELOCATION OF FIBER INTERCONNECT/CONDUIT & HAND HOLES W/ ANOKA COUNTY HIGHWAY DEPARTMENT.
- CONTRACTOR TO CONTACT ANOKA COUNTY HIGHWAY DEPARTMENT 3 BUSINESS DAYS PRIOR TO ANY WORK WITHIN THE RIGHT-OF-WAY.
- APPLICABLE MNDOT STANDARD PLATES: 3022C, 4006L, 9000E, 4129G, 4154B, 4160D, 9102E

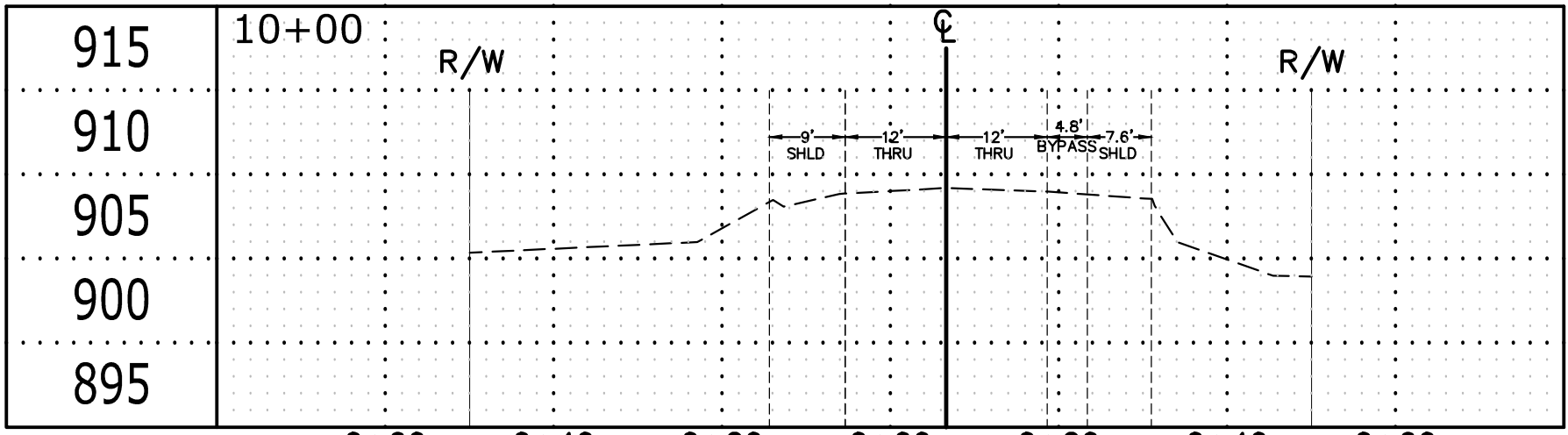
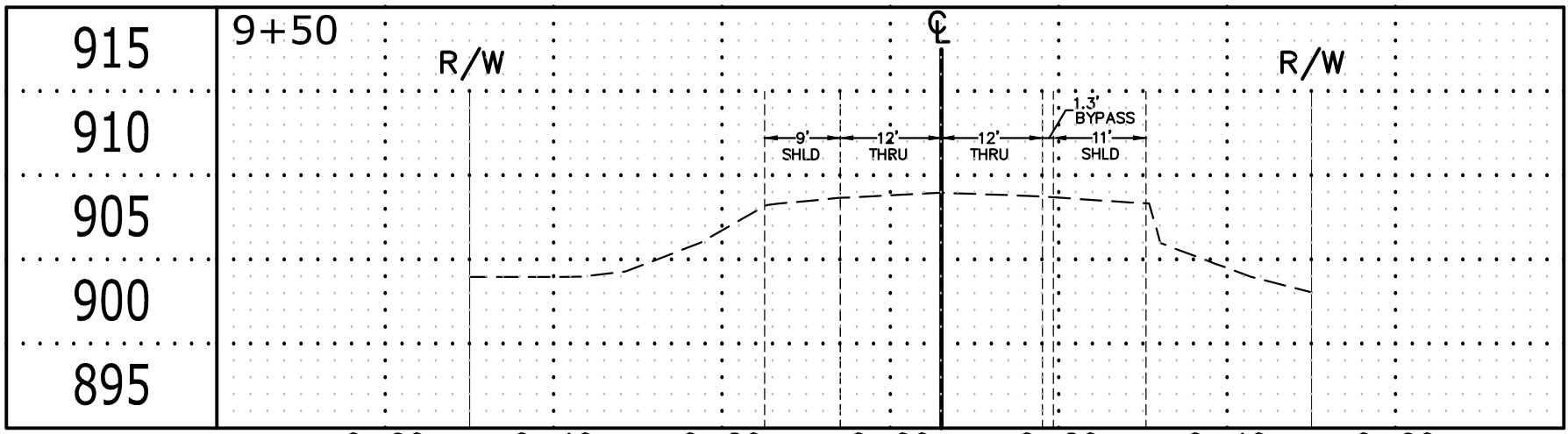
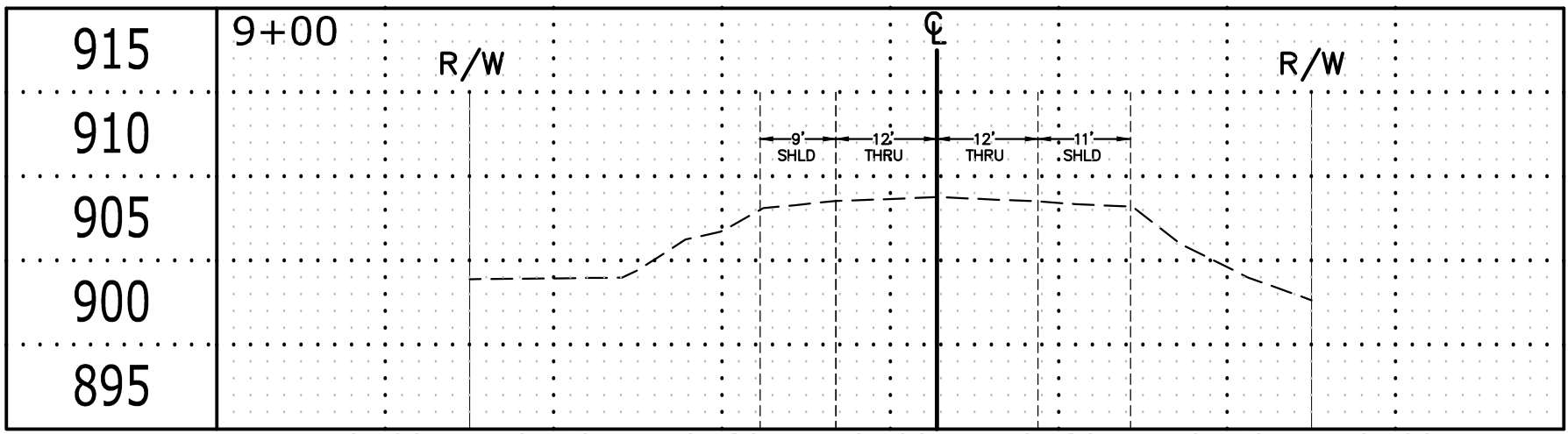
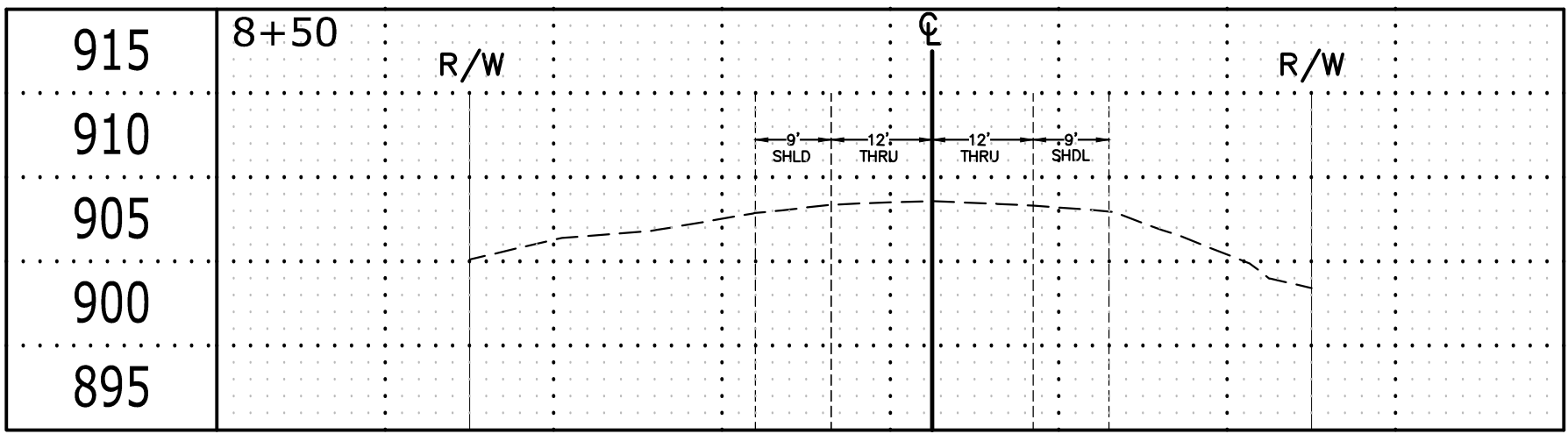
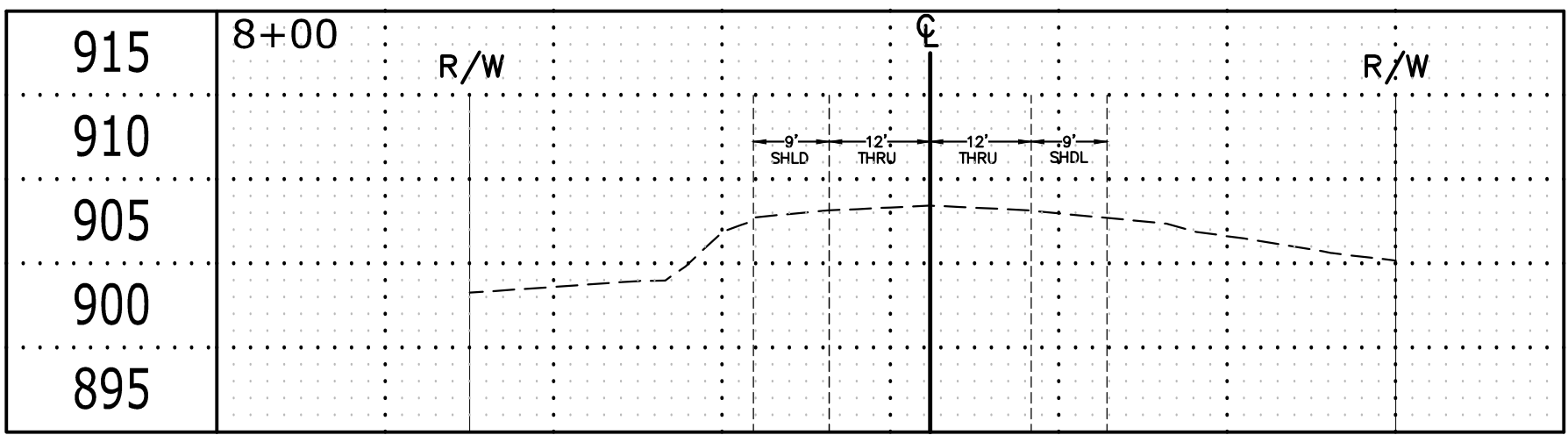
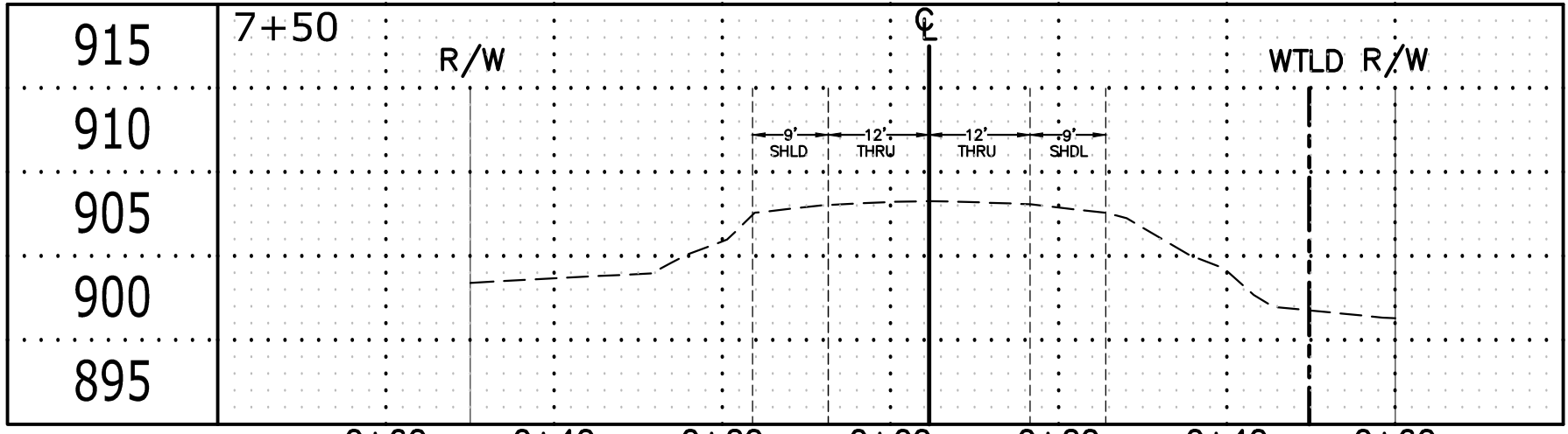
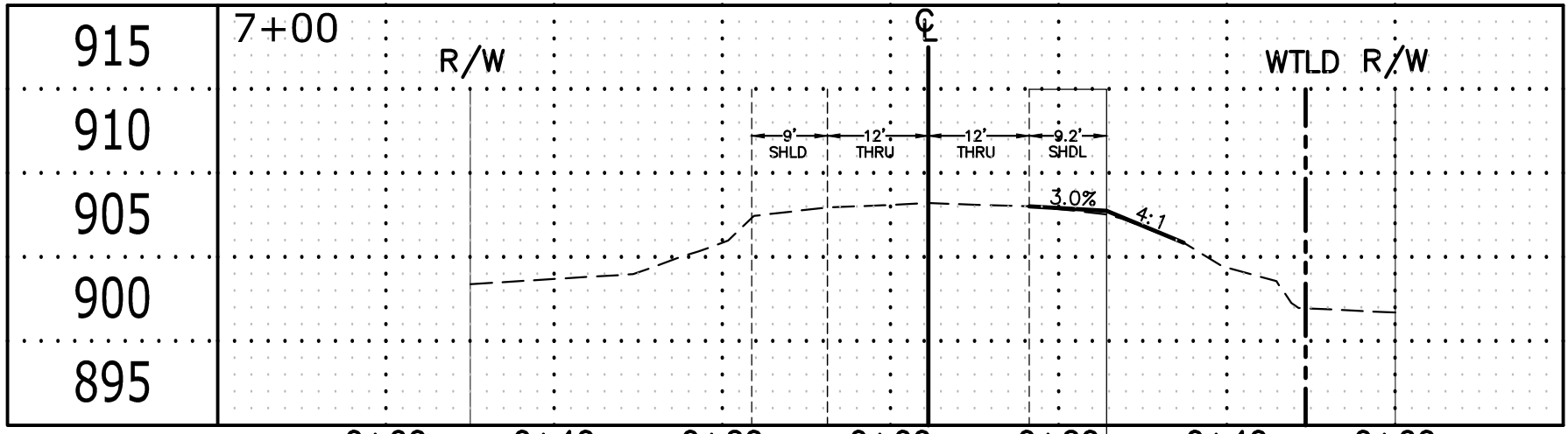
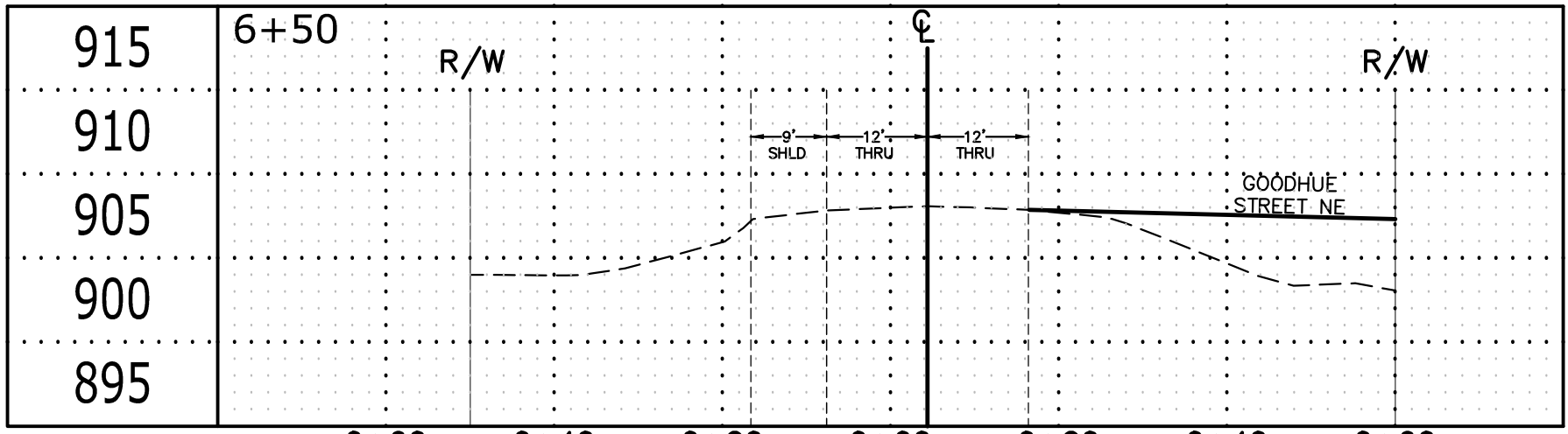
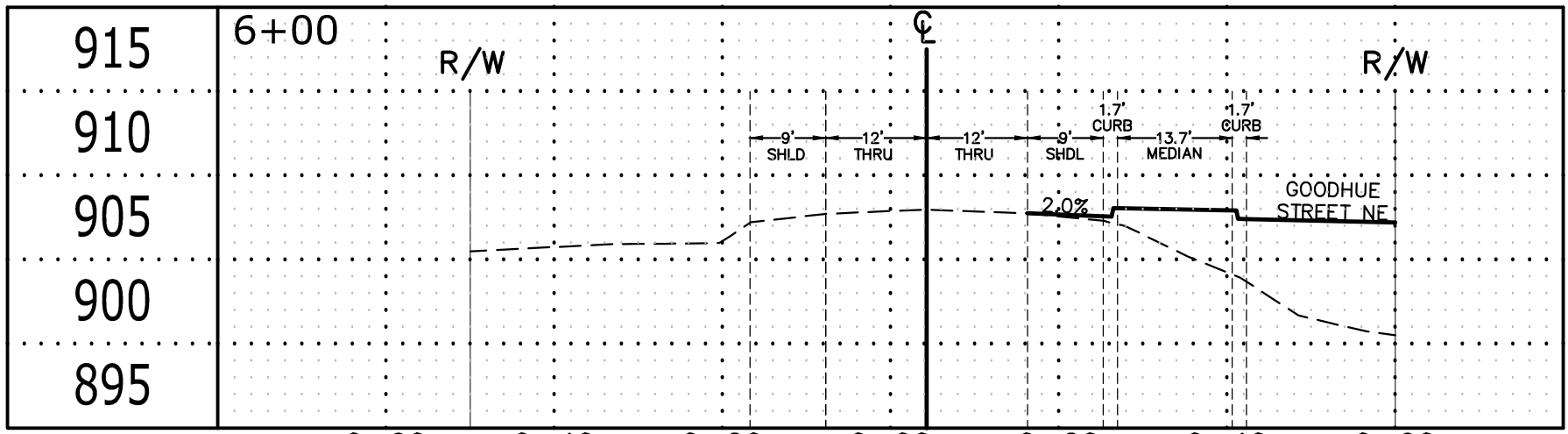
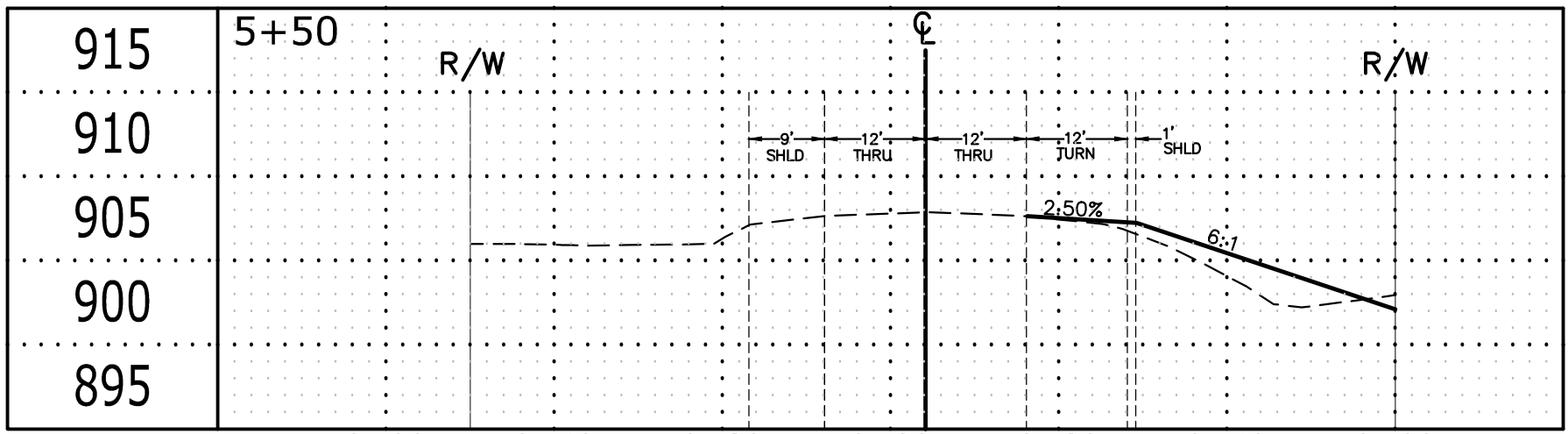
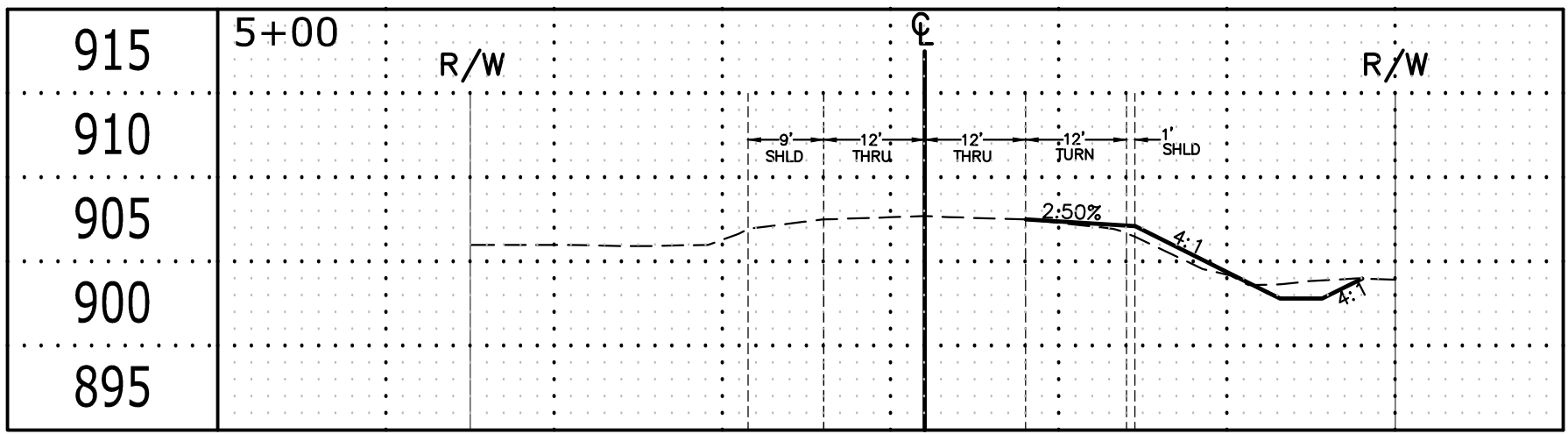
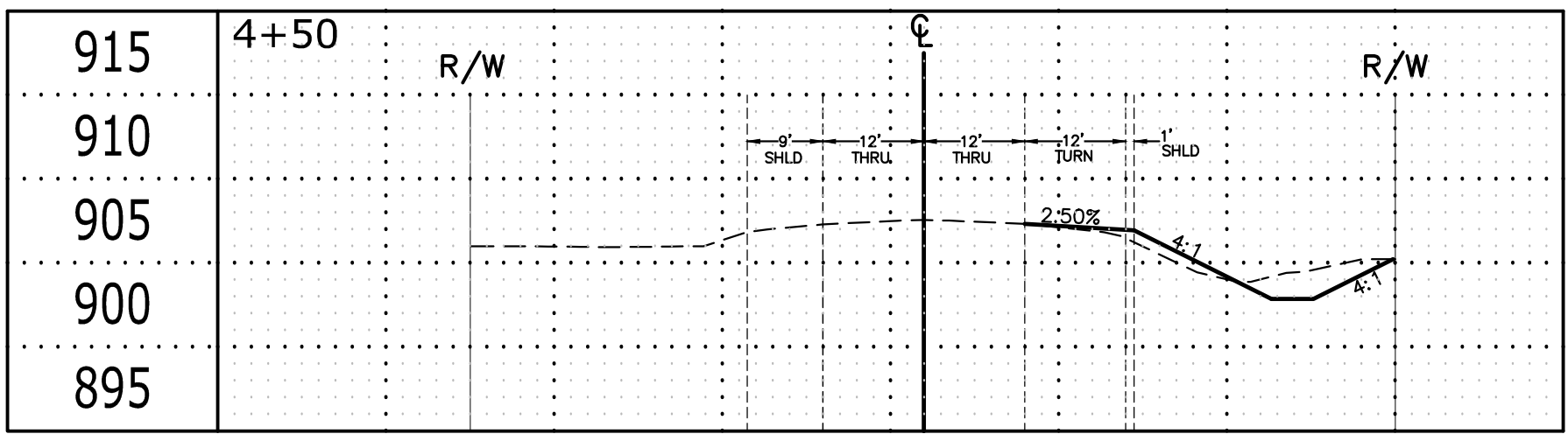
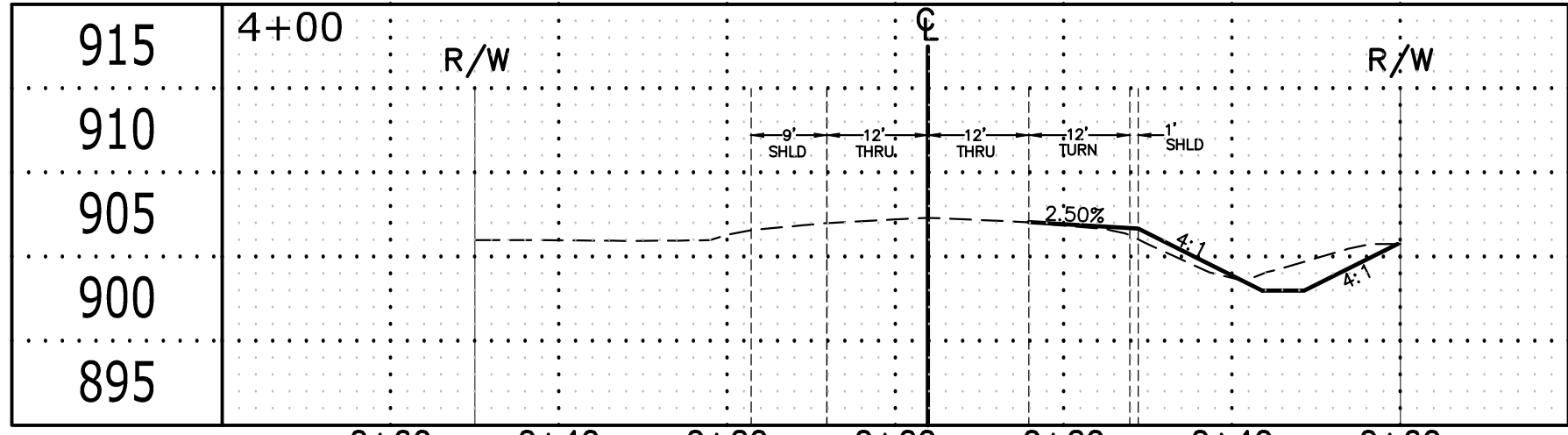
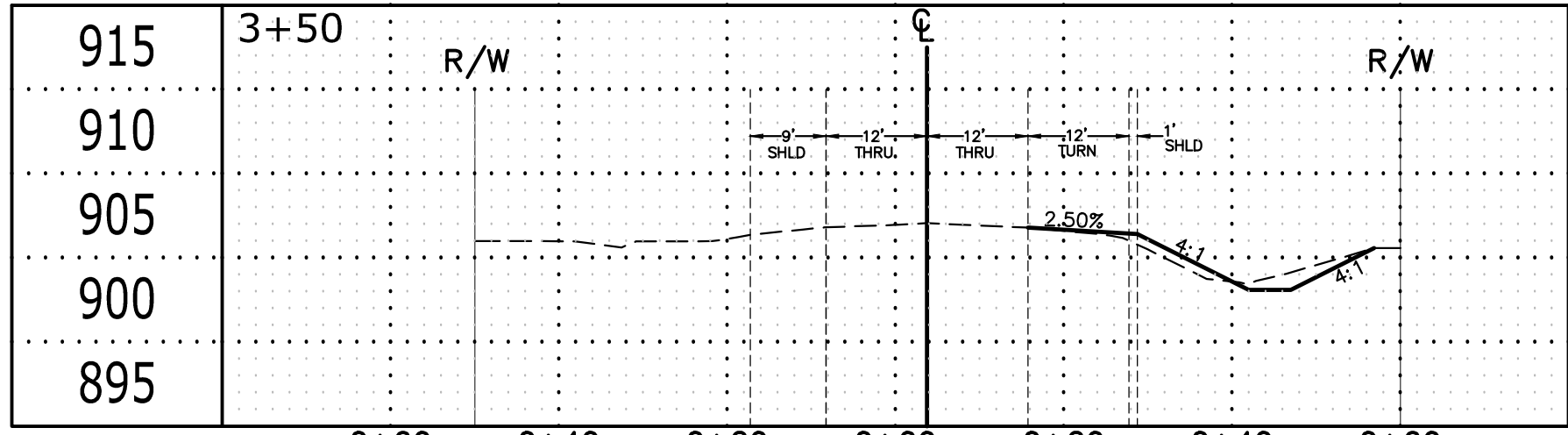
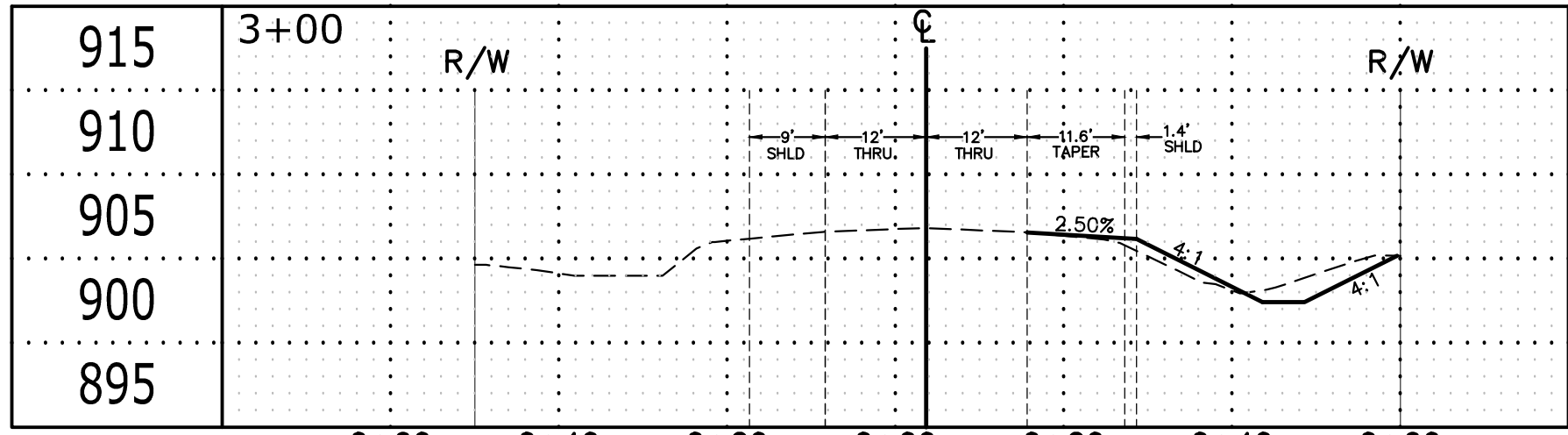
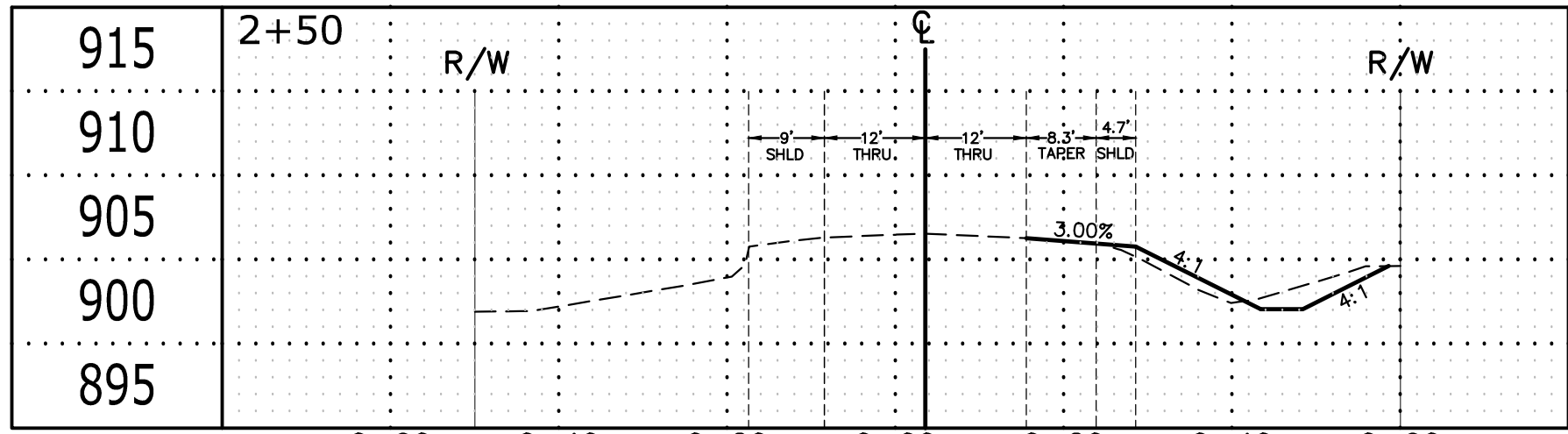
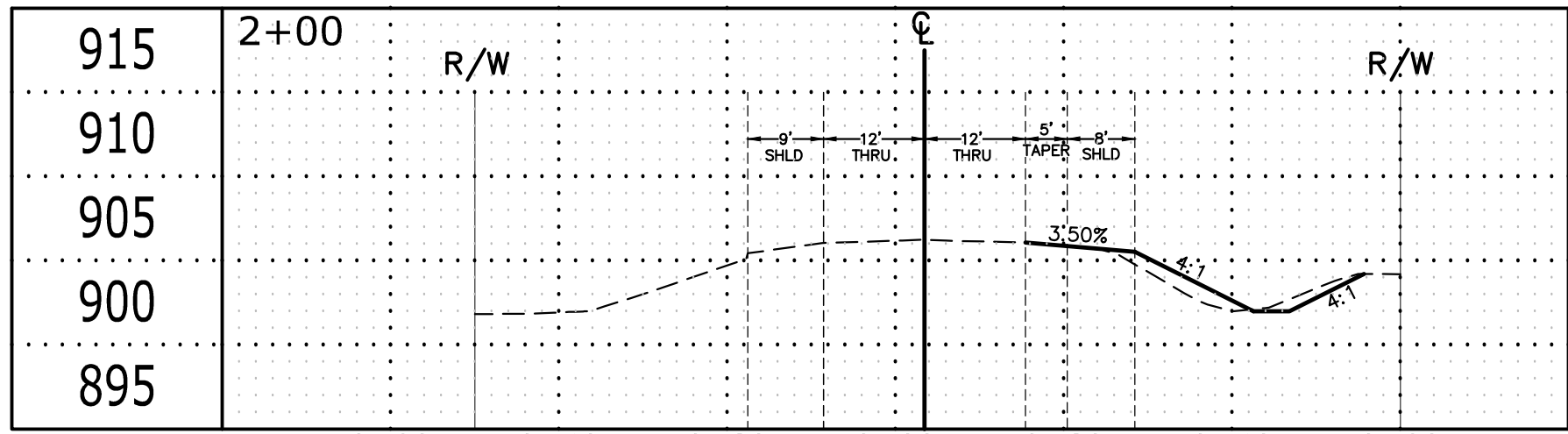
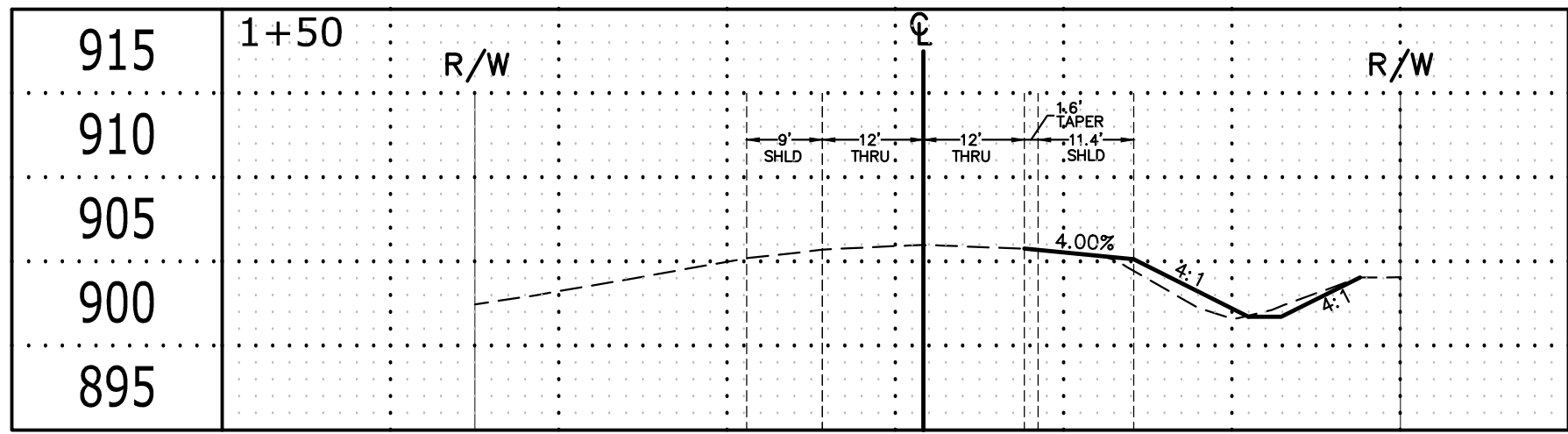
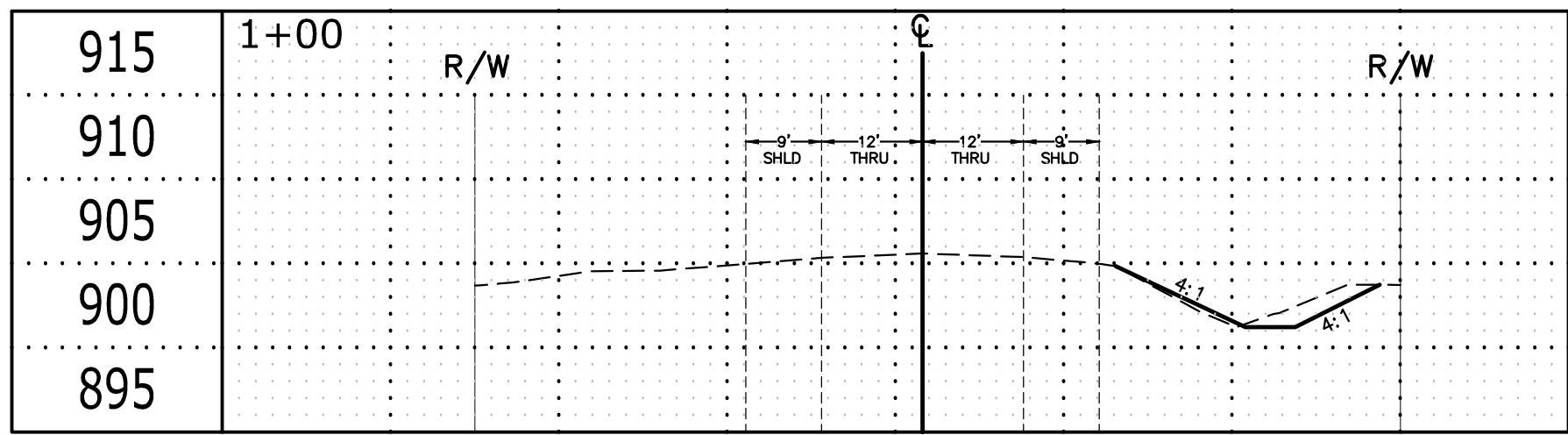
SIGN SCHEDULE				
SIGN	SIGN NO.	SIZE	QUANTITY	
(A)	R1-1	30" X 30" (WHITE ON RED)	SEE FINAL UTILITY PLAN	
(B)	R3-2	24" X 24" (BLACK AND RED ON WHITE)	3	
(C)	R3-7R	30" X 30" (BLACK ON WHITE)	1	
(D)	R5-1	30" X 30" (RED ON WHITE)	1	
(E)	R4-7	24" X 30" (BLACK ON WHITE)	1	
(F)	OM1-2	18" X 18" (YELLOW ON BLACK)	2	
(G)	STREET SIGN		SEE FINAL UTILITY PLAN	

CALL BEFORE YOU DIG

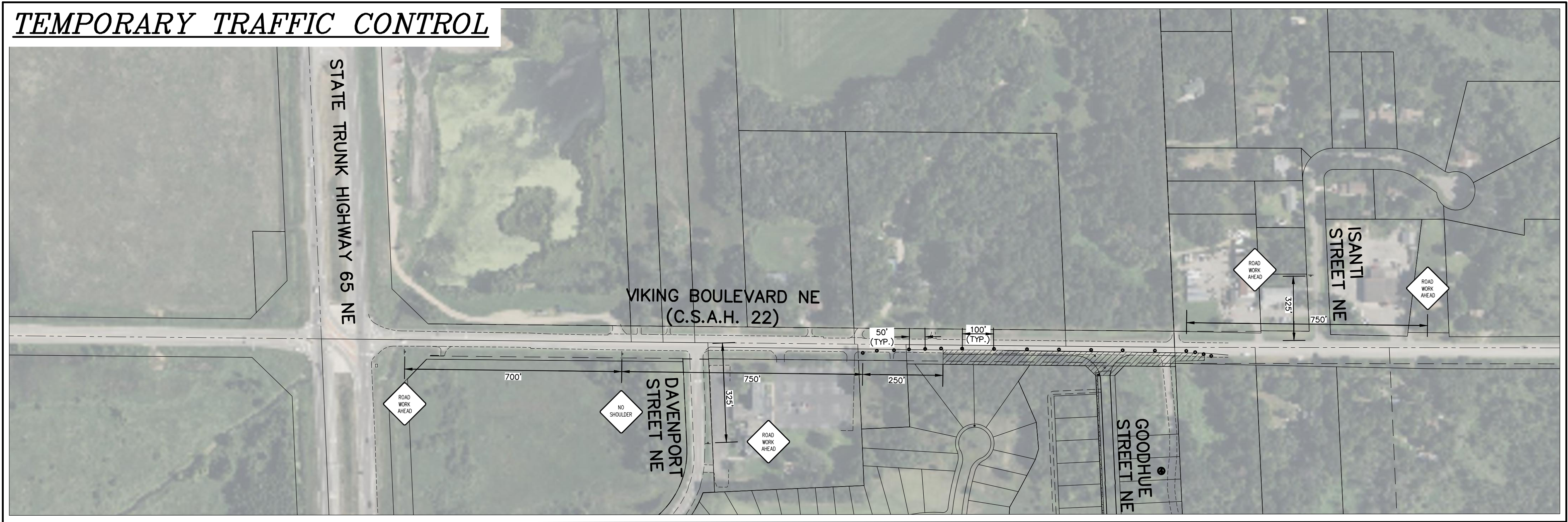
811

Know what's below.
Call before you dig.

The subsurface utility information shown on this plan is Utility Quality Level D. This quality level was determined according to the guidelines of CI/ASCE 38-02, entitled "Standard Guideline for the Collection and Depiction of Existing Subsurface Utility Data."



TEMPORARY TRAFFIC CONTROL

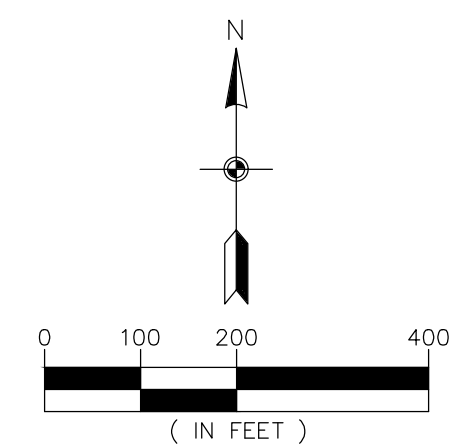


LEGEND		
	EXISTING	PROPOSED
PROPERTY LINE	---	---
EASEMENT LINE	---	---
CURB LINE	---	---
BITUMINOUS	[Pattern]	[Pattern]
CONCRETE	[Pattern]	[Pattern]
CONSTRUCTION AREA		[Pattern]
TRAFFIC BARRELS	[Symbol]	[Symbol]
SIGN	[Symbol]	[Symbol]

SIGN SCHEDULE	
SIGN	QUANTITY
[Road Work Ahead Sign]	4
[No Shoulder Sign]	1

NOTES:

- INTERMITTENT SIGNS SHALL BE USED FOR LOOSE GRAVEL, UNEVEN LANES, BUMP, ETC.
- LANE WIDTHS MINIMUM OF 10'. IF MINIMUM LANE WIDTH CANNOT BE MAINTAINED A TWO PERSON FLAGGING OPERATION SHALL BE USED.
- CONTRACTOR TO COMPLY WITH MnDOT LONGITUDINAL DROP OFF GUIDELINES (J-BARRIER MIGHT BE NEEDED)
- THE ACCESS IS TO REMAIN CLOSED TO THE PUBLIC UNTIL CONSTRUCTION IS COMPLETED FOR RIGHT IN RIGHT OUT PORK CHOP AND RIGHT TURN LANE.



BENCHMARK
1. Minnesota Department of Transportation Geodetic GSD Station No. 769 (MnDot Name DENN MNDT) - Elevation = 899.19 ft. (NAVD88)
2. Anoka County Benchmark No. 2041 Elevation = 909.39 ft. (NAVD88)

CALL BEFORE YOU DIG

811

Know what's below.
Call before you dig.

The subsurface utility information shown on this plan is utility Quality Level D. This quality level was determined according to the guidelines of CI/ASCE 38-02, entitled "Standard Guideline for the Collection and Depiction of Existing Subsurface Utility Data."



ENGINEERING
SURVEYING
PLANNING

3890 PHEASANT RIDGE DR NE
SUITE 100
BLAINE, MN 55449
TEL 763.489.7900
FAX 763.489.7959
CARLSON-ENGINEERING.COM

I hereby certify that this plan, specification or report was prepared by me or under my direct supervision and that I am a duly Licensed Professional Engineer under the laws of the State of Minnesota

Print Name: Aaron D. Briski, P.E.
Signature: *Aaron Briski*
Date: 4/26/24 License #: 57811

Drawn: GJS
Designed: ADB
Date: 4/26/24

Revisions:
1. 5/10/24 Per ACHD Comments
2. 7/10/24 Per ACHD Comments
3. 8/25/25 Per Second Addition
4. 12/4/25 Per ACHD Comments

EAST BETHEL 648-1 LAND, LLC
14015 Sunfish Lake Blvd. NW, Suite 400
Ramsey, MN 55303

VIKING MEADOWS
East Bethel, MN

TRAFFIC CONTROL PLAN

T6
of
T6