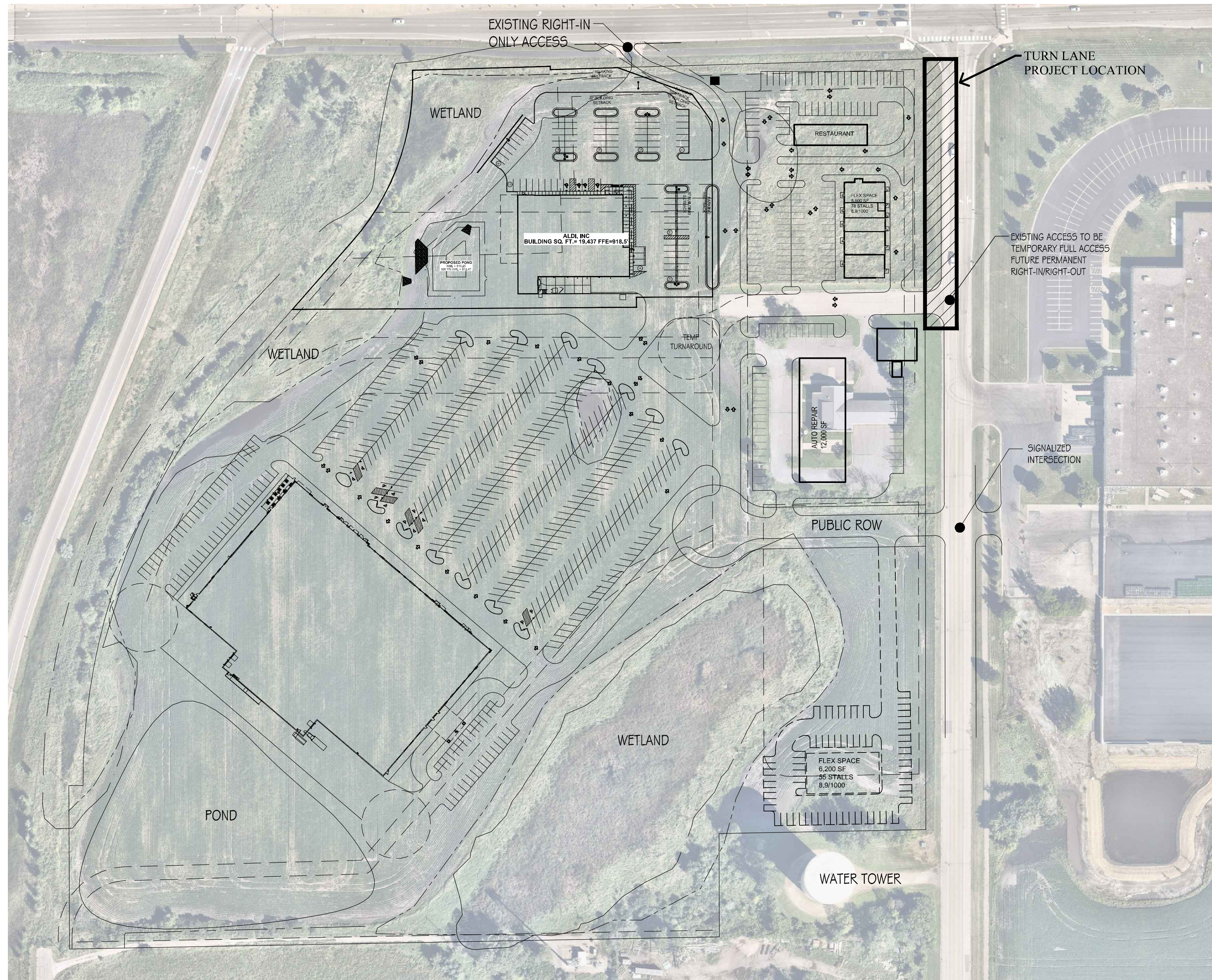


LEGEND

| EXISTING | PROPOSED | FUTURE | DESCRIPTION |
|----------|----------|--------|---|
| | | | SANITARY MANHOLE |
| | | | EXISTING SANITARY SEWER PROPOSED SANITARY SEWER FUTURE SANITARY SEWER |
| | | | HYDRANT |
| | | | GATE VALVE |
| | | | REDUCER |
| | | | EXISTING WATERMAIN PROPOSED WATERMAIN FUTURE WATERMAIN |
| | | | CATCH BASIN |
| | | | BEEHIVE |
| | | | STORM MANHOLE |
| | | | FLARED END SECTION |
| | | | CONTROL STRUCTURE |
| | | | EXISTING STORM SEWER PROPOSED STORM SEWER FUTURE STORM SEWER |
| | | | SURMOUNTABLE CURB & GUTTER |
| | | | B-STYLE CURB & GUTTER |
| | | | RIBBON CURB & GUTTER |
| | | | PHASE LINE |
| | | | EASEMENT LINE |
| | | | EXISTING 2' CONTOUR LINE |
| | | | EXISTING 10' CONTOUR LINE |
| | | | PROPOSED 2' CONTOUR LINE |
| | | | PROPOSED 10' CONTOUR LINE |
| | | | POND OUTLET LINE |
| | | | POND HIGH WATER LINE |
| | | | PROPOSED SPOT ELEVATION |
| | | | EMERGENCY OVERFLOW |
| | | | DELINEATED WETLAND LINE |
| | | | FEMA FLOODPLAIN BOUNDARY |
| | | | STANDARD EROSION CONTROL |
| | | | HEAVY-DUTY EROSION CONTROL |
| | | | TREE FENCE |
| | | | RETAINING WALL |
| | | | CONSERVATION AREA SIGN |
| | | | WETLAND BUFFER SIGN |
| | | | EX. CULVERT |
| | | | EX. OVERHEAD UTILITY LINES |
| | | | EX. UNDERGROUND TELEVISION LINE |
| | | | EX. UNDERGROUND TELEPHONE LINE |
| | | | EX. UNDERGROUND FIBER OPTIC LINE |
| | | | EX. UNDERGROUND ELECTRIC LINE |
| | | | EX. UNDERGROUND GAS LINE |
| | | | EX. FENCE (BARBED WIRE) |
| | | | EX. FENCE (CHAIN LINK) |
| | | | EX. FENCE (WOOD) |
| | | | EX. CAST IRON MONUMENT |
| | | | EX. ELECTRIC BOX |
| | | | EX. FLAG POLE |
| | | | EX. NATURAL GAS METER |
| | | | EX. HAND HOLE |
| | | | EX. FOUND IRON PIPE |
| | | | EX. JUDICIAL LAND MARK |
| | | | EX. LIGHT POLE |
| | | | EX. PK NAIL |
| | | | EX. UTILITY POLE |
| | | | EX. LAWN SPRINKLER VALVE |
| | | | EX. LAWN SPRINKLER HEAD |
| | | | EX. SEMAPHORE |
| | | | EX. SERVICE |
| | | | EX. TELEPHONE BOX |
| | | | EX. TEST HOLE |
| | | | EX. TELEVISION BOX |
| | | | EX. WATER WELL |
| | | | EX. MONITORING WELL |
| | | | EX. MAILBOX |
| | | | EX. CONTROL POINT |
| | | | EX. SPIKE |
| | | | EX. SIGN |
| | | | EX. CLEANOUT |
| | | | EX. SIGNIFICANT TREE |
| | | | EX. TREE LINE |
| | | | EX. GRAVEL SURFACE |
| | | | EX. BITUMINOUS SURFACE |
| | | | EX. CONCRETE SURFACE |
| | | | SELECT BACKFILL MATERIAL |
| | | | GRAVEL CONST. ENTRANCE |

OTTER CROSSING SOUTH OTTER LAKE ROAD TURN LANE CONSTRUCTION LINO LAKES, MINNESOTA

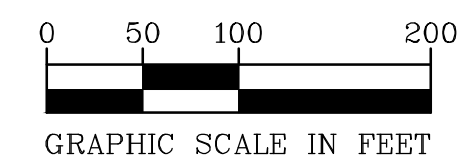
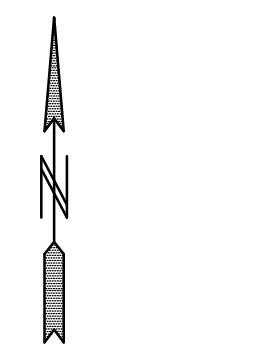


SHEET INDEX

1. COVER SHEET
2. TRAFFIC CONTROL PLAN
3. EXISTING CONDITIONS & REMOVAL PLAN
4. TURN LANE CONSTRUCTION PLAN
5. SECTIONS
6. SECTIONS

DEVELOPER

PAUL SCHREIER
TYME PROPERTIES
651-307-2123
3435 LABORE ROAD SUITE 150
VADNAIS HEIGHTS, MN 55110



Know what's below.
Call before you dig.

BENCH MARK
TOP NUT HYDRANT IN N.W. QUAD. OF
OTTER LAKE ROAD & PRIVATE DRIVE
370 FT. NORTH OF MAIN STREET
EL=920.47 NVGD88(DATUM)
01-ENG-119015-SHEET-COV9

PIONEERengineering
CIVIL ENGINEERS LAND PLANNERS LAND SURVEYORS LANDSCAPE ARCHITECTS

2422 Enterprise Drive
Mendota Heights, MN 55120

(651) 681-1914
Fax: 681-9488
www.pioneereng.com

APPROVED ANOKA COUNTY ENGINEER _____ Date _____

I hereby certify that this plan was prepared by me or under my direct supervision and that I am a duly Licensed Professional Engineer under the laws of the State of Minnesota

Name Paul J. Schreier
Reg. No. 19860 Date 04-14-2025

| DESIGN DESIGNATION | |
|----------------------------------|----------------------|
| ESAL ₂₀ | 1,183,000 |
| R VALUE | 70 |
| ADT (2022)= | 4,031 |
| Proj. ADT (2029)= | 9,696 (project only) |
| Proj. HCADT (2029)= | 390 |
| Soil Factor | NA |
| 10 TON DESIGN | |
| Functional Classification | Major Collector |
| No. of Traffic Lanes | NA |
| No. of Parking Lanes | 0 |
| Design Speed | 55 |
| Based on Stopping Sight Distance | |
| Height of eye | 3.5 |
| Height of object | 2.0 |

NOTE:
ALL WORK WITHIN THE COUNTY RIGHT OF WAY
SHALL USE MNDOT 2020 SPECIFICATIONS.

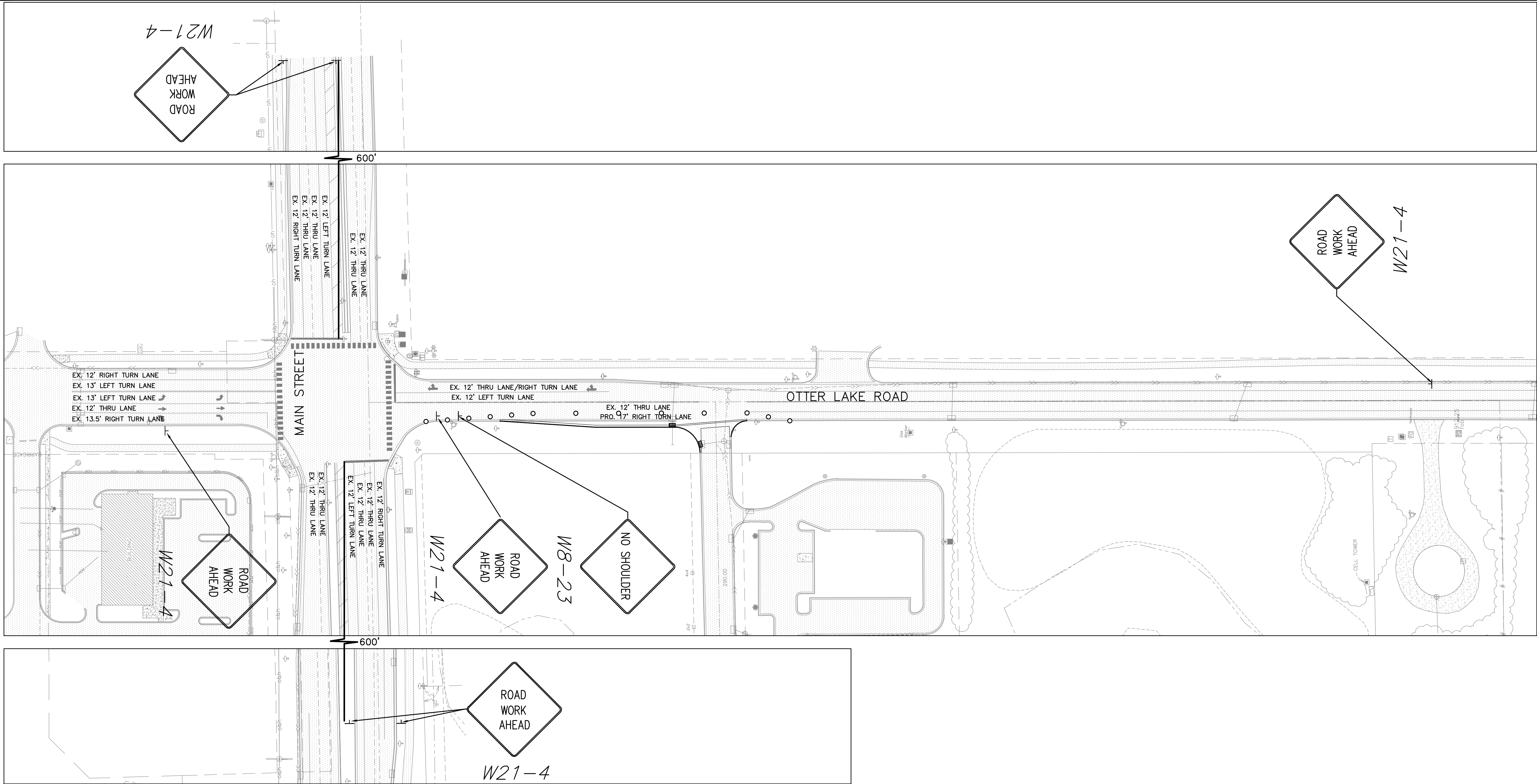
Date 04-14-2025
Designed PJCBNM
Drawn BNM

COVER SHEET

TYME PROPERTIES
3435 LABORE ROAD SUITE 150
VADNAIS HEIGHTS, MN 55110

OTTER CROSSING SOUTH
LINO LAKES, MINNESOTA

1 OF 6

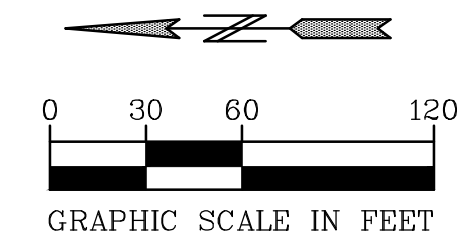


GENERAL INFORMATION:

1. THE CONTRACTOR SHALL FURNISH, INSTALL AND MAINTAIN THE DEVICES IN THIS TRAFFIC CONTROL PLAN UNLESS OTHERWISE NOTED.
2. FIELD CONDITIONS MAY REQUIRE MODIFICATIONS OF THIS LAYOUT AS DEEMED NECESSARY BY THE ENGINEER.
3. ALL DISTANCES ARE APPROXIMATE.
4. THE CONTRACTOR IS RESPONSIBLE FOR PROTECTING ANY WORK AREAS NEAR TRAFFIC IN ACCORDANCE WITH THE MN MUTCD.
5. IF THE CONTRACTOR DECIDES TO PERFORM THE CONSTRUCTION WORK IN A SEQUENCE OTHER THAN SHOWN IN THIS TRAFFIC CONTROL PLAN, THE CONTRACTOR SHALL PROVIDE COMPLETED REVISED TRAFFIC CONTROL PLANS TO BE APPROVED BY THE ENGINEER.
6. ALL TRAFFIC CONTROL DEVICES SHALL CONFORM AND BE INSTALLED IN ACCORDANCE TO THE MINNESOTA MANUAL ON UNIFORM TRAFFIC CONTROL DEVICES (MN MUTCD) AND PART VI, FIELD MANUAL FOR TEMPORARY TRAFFIC CONTROL ZONE LAYOUTS.

TRAFFIC CONTROL DEVICES & SYMBOLS LEGEND

| SYMBOL | DESCRIPTION |
|--------|-----------------------------|
| | TRAFFIC CONTROL SIGN |
| | CHANNELIZING DEVICE / CONES |



PIONEERengineering
CIVIL ENGINEERS LAND PLANNERS LAND SURVEYORS LANDSCAPE ARCHITECTS

2422 Enterprise Drive
Mendota Heights, MN 55120

(651) 681-1914
Fax: 681-9488
www.pioneereng.com

I hereby certify that this plan was prepared by me or under my direct supervision and that I am a duly Licensed Professional Engineer under the laws of the State of Minnesota

Name *Paul J. Chernie*

Reg. No. 19860

Date 04-14-2025

Revisions
1. 06-11-2025 County Comments
2. 06-16-2025 Traffic Control Plan
3. 07-14-2025 County Comments
4. 07-18-2025 City Comments

5. 07-25-2025 County Comments
6. 08-13-2025 County Comments

Date 04-14-2025
Designed PJC:BNM
Drawn BNM

TRAFFIC CONTROL PLAN

APPROVED ANOKA COUNTY ENGINEER

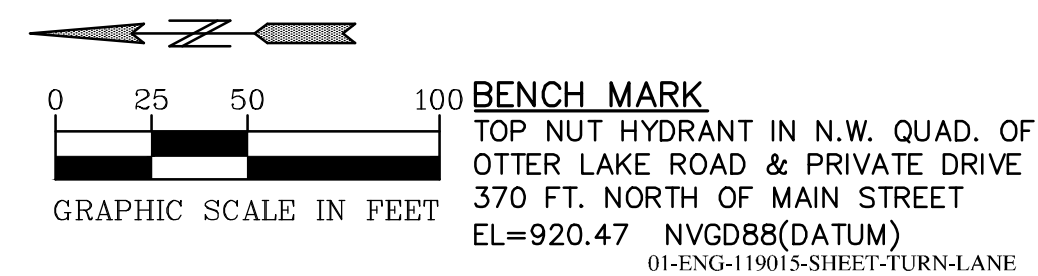
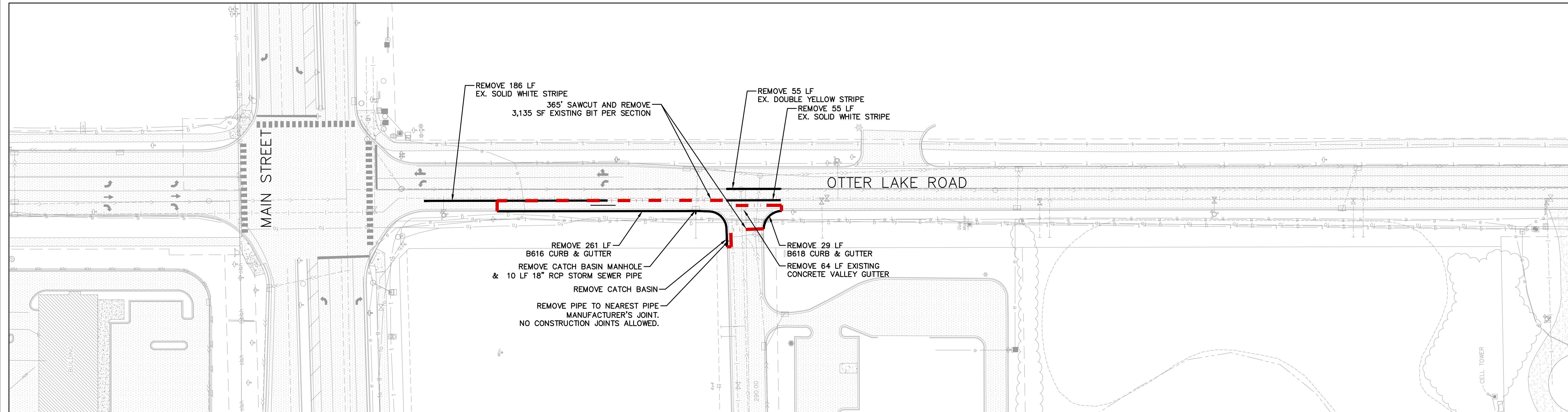
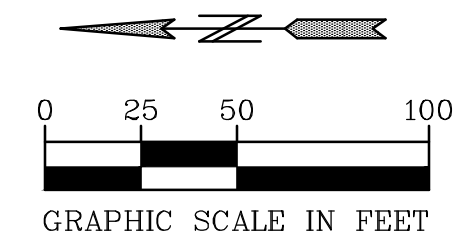
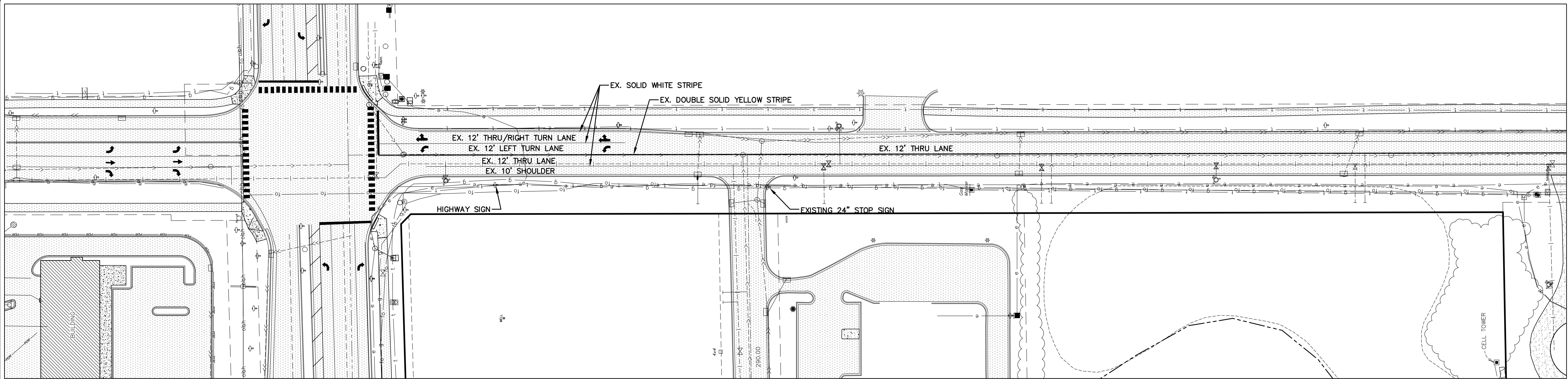
Date

TYME PROPERTIES
3435 LABORE ROAD SUITE 150
VADNAIS HEIGHTS, MN 55110

OTTER CROSSING SOUTH
LINO LAKES, MINNESOTA

2 OF 6

BENCH MARK
TOP NUT HYDRANT IN N.W. QUAD. OF
OTTER LAKE ROAD & PRIVATE DRIVE
370 FT. NORTH OF MAIN STREET
EL=920.47 NVGD88(DATUM)
01-ENG-119015-SHEET-TURN-CONTROL



PIONEERengineering

CIVIL ENGINEERS LAND PLANNERS LAND SURVEYORS LANDSCAPE ARCHITECTS

2422 Enterprise Drive
Mendota Heights, MN 55120

(651) 681-1914
Fax: 681-9488
www.pioneereng.com

I hereby certify that this plan was prepared by me or under my direct supervision and that I am a duly Licensed Professional Engineer under the laws of the State of Minnesota

Name Paul J. Chernie
Reg. No. 19860 Date 04-14-2025

Revisions
1. 06-11-2025 County Comments
2. 06-16-2025 Traffic Control Plan
3. 07-14-2025 County Comments
4. 07-18-2025 City Comments
5. 07-25-2025 County Comments
6. 08-13-2025 County Comments

Date 04-14-2025
Designed PJC.BNM
Drawn BNM

**OTTER LAKE ROAD TURN LANE
EXISTING CONDITIONS & DEMOLITION**

TYME PROPERTIES
3435 LABORE ROAD SUITE 150
VADNAIS HEIGHTS, MN 55110

OTTER CROSSING SOUTH
LINO LAKES, MINNESOTA

3 OF 6

