

| LEGEND | |
|--------|---------------------------------|
| | PROPOSED BOUNDARY LINE |
| | EXISTING BOUNDARY LINE |
| | PROPOSED CONCRETE CURB |
| | EXISTING CONCRETE CURB |
| | PROPOSED EASEMENT LINE |
| | EXISTING EASEMENT LINE |
| | PROPOSED BUILDING LINE |
| | EXISTING BUILDING LINE |
| | PROPOSED RETAINING WALL |
| | EXISTING RETAINING WALL |
| | PROPOSED WETLAND |
| | EXISTING WETLAND |
| | PROPOSED TREE LINE |
| | EXISTING TREE LINE |
| | PROPOSED SAW CUT LINE |
| | EXISTING SAW CUT LINE |
| | PROPOSED SIGN |
| | EXISTING SIGN |
| | PROPOSED BOLLARD |
| | EXISTING BOLLARD |
| | PROPOSED PARKING STALL COUNT |
| | EXISTING PARKING STALL COUNT |
| | PROPOSED KEY NOTE |
| | EXISTING KEY NOTE |
| | PROPOSED LIGHT POLE (BY OTHERS) |
| | EXISTING LIGHT POLE (BY OTHERS) |

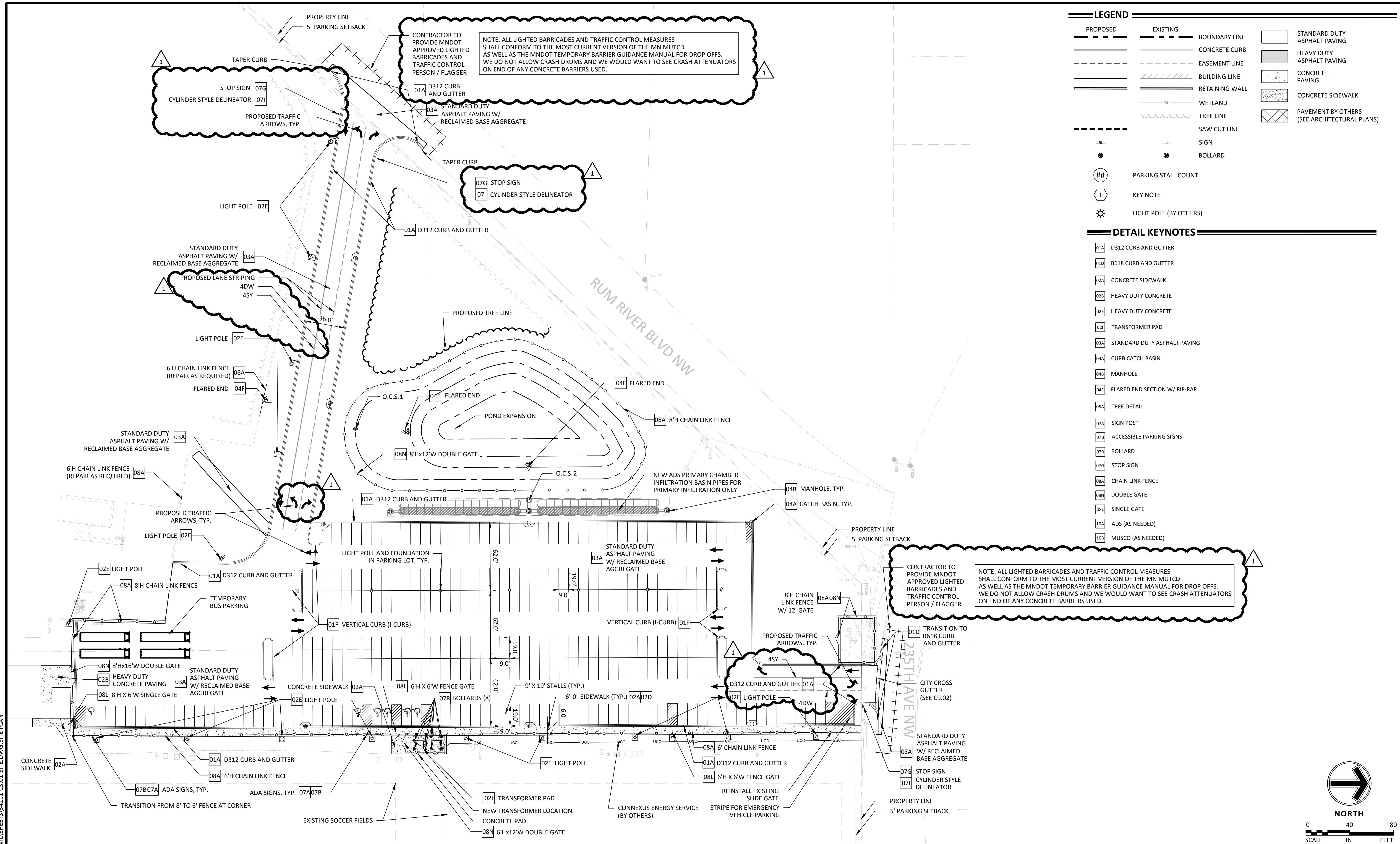
| DETAIL KEYNOTES | |
|-----------------|-----------------------------------|
| | 01A D312 CURB AND GUTTER |
| | 01D B618 CURB AND GUTTER |
| | 02A CONCRETE SIDEWALK |
| | 02B HEAVY DUTY CONCRETE |
| | 02E HEAVY DUTY CONCRETE |
| | 02I TRANSFORMER PAD |
| | 03A STANDARD DUTY ASPHALT PAVING |
| | 04A CURB CATCH BASIN |
| | 04B MANHOLE |
| | 04F FLARED END SECTION W/ RIP-RAP |
| | 05A TREE DETAIL |
| | 07A SIGN POST |
| | 07B ACCESSIBLE PARKING SIGNS |
| | 07R BOLLARD |
| | 07G STOP SIGN |
| | 08A CHAIN LINK FENCE |
| | 08N DOUBLE GATE |
| | 08L SINGLE GATE |
| | 10A ADS (AS NEEDED) |
| | 10B MUSCO (AS NEEDED) |

CONTRACTOR TO PROVIDE MNDOT APPROVED LIGHTED BARRICADES AND TRAFFIC CONTROL PERSON / FLAGGER

NOTE: ALL LIGHTED BARRICADES AND TRAFFIC CONTROL MEASURES SHALL CONFORM TO THE MOST CURRENT VERSION OF THE MN MUTCD AS WELL AS THE MNDOT TEMPORARY BARRIER GUIDANCE MANUAL FOR DROP OFFS. WE DO NOT ALLOW CRASH DRUMS AND WE WOULD WANT TO SEE CRASH ATTENUATORS ON END OF ANY CONCRETE BARRIERS USED.

CONTRACTOR TO PROVIDE MNDOT APPROVED LIGHTED BARRICADES AND TRAFFIC CONTROL PERSON / FLAGGER

NOTE: ALL LIGHTED BARRICADES AND TRAFFIC CONTROL MEASURES SHALL CONFORM TO THE MOST CURRENT VERSION OF THE MN MUTCD AS WELL AS THE MNDOT TEMPORARY BARRIER GUIDANCE MANUAL FOR DROP OFFS. WE DO NOT ALLOW CRASH DRUMS AND WE WOULD WANT TO SEE CRASH ATTENUATORS ON END OF ANY CONCRETE BARRIERS USED.



24.15 (LWS TECH) | DAN REBOK | 6/1/2026 4:22:07 PM | L:\PROJECTS\54211\CAD\CIVIL\SHEETS\54211-C3.01-SITE.DWG-SITE PLAN

| NO | DATE | BY | CKD | APPR | COMMENT |
|----|------------|-----|-----|------|---|
| 1 | 06/02/2026 | DCR | NRT | | ANOKA COUNTY HIGHWAY DEPARTMENT PLAN REVIEW MODIFICATIONS |

I hereby certify that this plan, specification, or report was prepared by me or under my direct supervision and that I am a duly licensed Professional Engineer under the laws of the State of Minnesota.

Print Name: NEIL TESSIER

Neil Tessier

Date: 05/06/2026 License #: 26364

PRELIMINARY
4/7/2026
DESIGN REVIEW

DESIGNED BY
NT

CHECKED BY
NT

PROJECT NO.
54211

DRAWN BY
DCR

DESIGNED BY
NT

CHECKED BY
NT

PROJECT NO.
54211

www.sambatek.com
Engineering | Surveying | Planning | Environmental

SITE PLAN

ST. FRANCIS AREA SCHOOLS
SPORTS COMPLEX
PARKING LOT IMPROVEMENTS
23397 RUM RIVER BOULEVARD NW, ST FRANCIS, MN

SHEET
C3.01
OF
REV.