



wsb

WSB PROJECT NO.: 028333-000

SCALE: AS SHOWN DESIGN BY: MS

PLAN BY: MS CHECK BY: SD

REVISIONS

NO.	DATE	DESCRIPTION

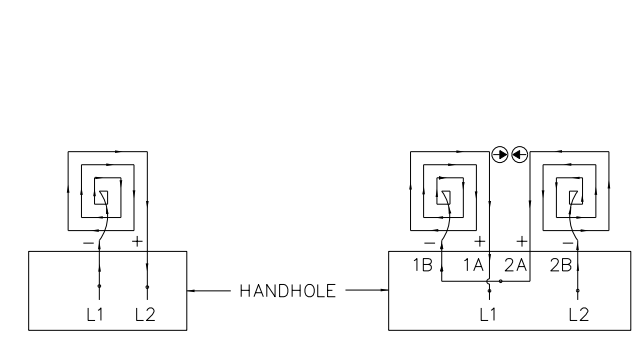
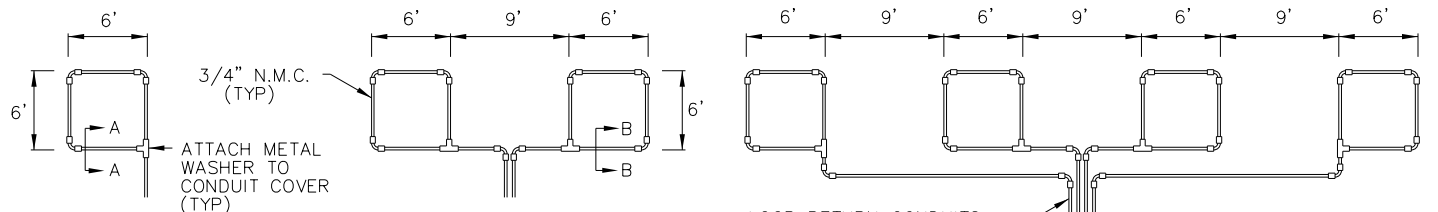
I HEREBY CERTIFY THAT THIS PLAN, SPECIFICATION, OR REPORT WAS PREPARED BY ME OR UNDER MY DIRECT SUPERVISION AND THAT I AM A DULY LICENSED PROFESSIONAL ENGINEER UNDER THE LAWS OF THE STATE OF MINNESOTA.

*Sean Delmore*  
SEAN DELMORE, PE, PTOE  
DATE: 7/7/2025 LIC. NO.: 40845

CITY OF BLAINE, MN  
LAKES PARKWAY AND  
ZEST STREET  
CONSTRUCTION  
SAP 106-143-003  
SAP 106-144-001

REVISE SIGNAL SYSTEM

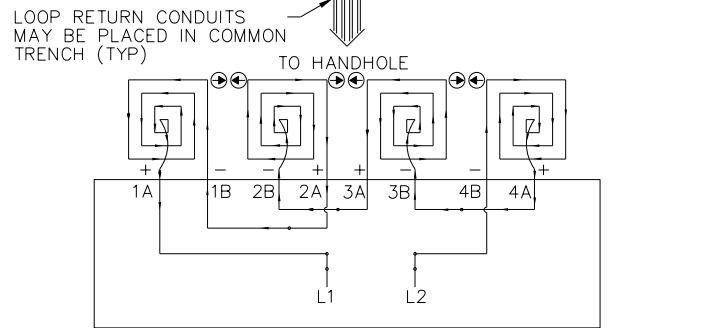
CITY PROJECT 25-04 SHEET 64 OF 72 SHEETS



LOOP DETECTOR DETAIL 'A' (LOOP PHASING FOR SINGLE CONNECTION)

- L1 TO 1A
- 1B TO 2A
- 2B TO L2

LOOP DETECTOR DETAIL 'B' (LOOP PHASING FOR SERIES CONNECTION)

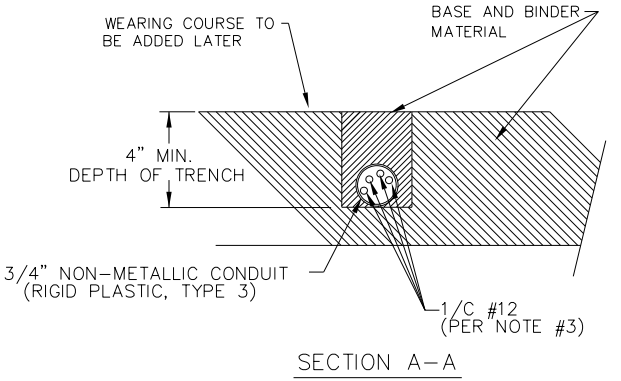


LOOP CONNECTIONS SHALL BE LABELED AND SPLICED IN THE HANDHOLE AS FOLLOWS:

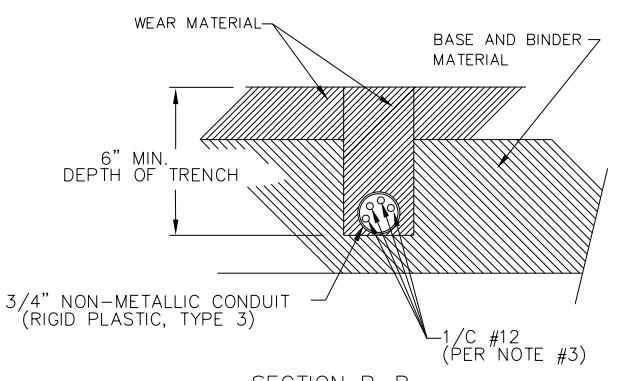
- L1 TO 1A
- 1B TO 2A
- 2B TO 3A
- 3B TO 4A
- 4B TO L2

SPLICE CONTROL CABLE TO L1 & L2 IN HANDHOLE. ALL CONDUCTORS SHALL BE TAGGED IN HANDHOLE (1A, 1B, ECT)

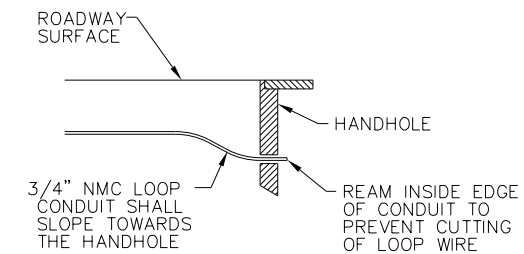
LOOP DETECTOR DETAIL 'C' (LOOP PHASING FOR SERIES CONNECTION)



SECTION A-A  
DETAIL FOR LOOP INSTALLATION IN NEW ROADWAY



SECTION B-B  
DETAIL FOR LOOP INSTALLATION IN EXISTING ROADWAY



DRAINAGE DETAIL

LOOP DETECTOR WIRING

- 1) ALL CORNERS SHALL BE 90° CONDUIT BENDS.
- 2) CONNECT WIRES IN HANDHOLES USING SPLICE KIT METHOD DESCRIBED IN THE SPECIAL PROVISIONS.
- 3) LOOP DETECTOR WIRES SHALL BE #12 AWG CROSSED LINKED POLYETHYLENE (XLP). SEE SPECIAL PROVISIONS.
- 4) LOOP LEAD IN WIRES SHALL BE TWISTED A MIN. OF (5) TURNS PER FOOT THROUGH THE CONDUIT TO THE HANDHOLE.
- 5) NMC DESIGNATES NON-METALLIC CONDUIT (SPEC. 3803)
- 6) LOOPS 6' x 6' THRU 6' x 14' SHALL HAVE (4) TURNS.
- 7) LOOPS 6' x 15' AND LARGER SHALL HAVE (2) TURNS.

LEGEND OF SYMBOLS

CONTROLLER AND SERVICE EQUIP. NO's	(A)
SIGNAL BASE NO.	(B)
SIGNAL FACE NO.	(C)
LUMINAIRE NO.	(D)
CONTROLLER AND CABINET	(E)
CONTROLLER AND CABINET - IN PLACE	(F)
HANDHOLE	(G)
HANDHOLE - IN PLACE	(H)
RIGID STEEL CONDUIT (RSC)	(I)
RIGID STEEL CONDUIT (RSC) - IN PLACE	(J)
SIGNAL FACE WITH BACKGROUND SHIELD	(K)
SIGNAL FACE W/O BACKGROUND SHIELD	(L)
SIGNAL FACE - IN PLACE	(M)
PEDESTRIAN INDICATORS	(N)
PEDESTRIAN INDICATORS - IN PLACE	(O)
PEDESTRIAN PUSH BUTTONS ON PEDESTAL OR POLE	(P)
PEDESTRIAN PUSH BUTTON STATION	(Q)
TRAFFIC SIGNAL PEDESTAL	(R)
TRAFFIC SIGNAL PEDESTAL - INPLACE	(S)
TRAFFIC SIGNAL POLE AND MAST ARM	(T)
TRAFFIC SIGNAL POLE AND MAST ARM - IN PLACE	(U)
STREET LIGHT POLE AND LUMINAIRE	(V)
STREET LIGHT POLE AND LUMINAIRE - IN PLACE	(W)
MAST ARM AND LUMINAIRE	(X)
MAST ARM AND LUMINAIRE - INPLACE	(Y)
WOOD POLE	(Z)
WOOD POLE - IN PLACE	(AA)
SOURCE OF POWER	(AB)
RAILROAD SIGNAL - IN PLACE	(AC)
RIGHT OF WAY LINE	(AD)
CENTERLINE	(AE)
EDGE OF ROADWAY	(AF)
SHOULDERLINE	(AG)
CURB LINE	(AH)
STOP BAR	(AI)
EMERGENCY VEHICLE PREEMPTION DETECTOR	(AJ)

ABBREVIATIONS

3-1(EG)	SIGNAL HEAD PHASE "3" - NO. "1"	P2-1(EG)	PED INDICATION PHASE "2" - NO. "1"
BR. GR.	BARE GROUND	PB	PUSH BUTTON
CH. SW.	CHECK SWITCH	PB2-1(EG)	PUSH BUTTON PHASE "2" - NO. "1"
CLR	CLEAR	PEC	PHOTOELECTRIC CELL
D2-1(EG)	DETECTOR PHASE "2" - NO. "1"	PED	PEDESTRIAN
DWK	DON'T WALK	R	RED
EQQ	EQUIPMENT GROUND	R&S	REMOVE AND SALVAGE
EVP	EMERGENCY VEHICLE PRE-EMPTION	RLTA	RED LEFT TURN ARROW
F&I	FURNISH AND INSTALL	RRTA	RED RIGHT TURN ARROW
FL	FLASH/FLASHING	RSC	RIGID STEEL CONDUIT
G	GREEN	SOP	SOURCE OF POWER
GLTA	GREEN LEFT TURN ARROW	SPR	SPARE
GRN	GREEN	ST. LHT	STREET LIGHT
GR. R	GROUND ROD	STA	STATION
GRTA	GREEN RIGHT TURN ARROW	SW	SWITCH
GTHA	GREEN THRU ARROW	SWD	SWITCHED
HH	HANDHOLE	S&R	SALVAGE AND REINSTALL
HPS	HIGH PRESSURE SODIUM	TDW	TELEPHONE DROP WIRE
JB	JUNCTION BOX	WLK	WALK
LUM	LUMINAIRE	YEL	YELLOW
NEU	NEUTRAL	YLTA	YELLOW LEFT TURN ARROW
NMC	NONMETALLIC CONDUIT	YRTA	YELLOW RIGHT TURN ARROW
		YTHA	YELLOW THRU ARROW

CONDUCTOR COLOR CODE

R	RED
O	ORANGE
BL	BLUE
WH	WHITE
R/BLK	RED WITH BLACK TRACER
O/BLK	ORANGE WITH BLACK TRACER
BL/BLK	BLUE WITH BLACK TRACER
WH/BLK	WHITE WITH BLACK TRACER
BLK	BLACK
BLK/WH	BLACK WITH WHITE TRACER
G/BLK	GREEN WITH BLACK TRACER
G	GREEN

TABULATION OF SIGNAL QUANTITIES					
ITEM NO	ITEM	UNIT	TOTAL ESTIMATED QUANTITY	PARTICIPATION	
				SAP 106-143-003	LOCAL FUNDS
2565	REVISE SIGNAL SYSTEM	SYSTEM	1	1	

4:13:23 PM PLOTTED/REVISED: 7/7/2025

PATH & FILENAME: Projects\Minnesota\026198-000\05\_Discipline\Roadway\03\_Sheets\026198-000-445sgp-defl-001



wsb

WSB PROJECT NO.: 028333-000

SCALE: AS SHOWN DESIGN BY: MS  
PLAN BY: MS CHECK BY: SD

NO.	DATE	DESCRIPTION

I HEREBY CERTIFY THAT THIS PLAN, SPECIFICATION, OR REPORT WAS PREPARED BY ME OR UNDER MY DIRECT SUPERVISION AND THAT I AM A DULY LICENSED PROFESSIONAL ENGINEER UNDER THE LAWS OF THE STATE OF MINNESOTA.

*Sean Delmore*  
SEAN DELMORE, PE, PTOE  
DATE: 7/7/2025 LIC. NO.: 40845

CITY OF BLAINE, MN  
LAKES PARKWAY AND  
ZEST STREET  
CONSTRUCTION  
SAP 106-143-003  
SAP 106-144-001

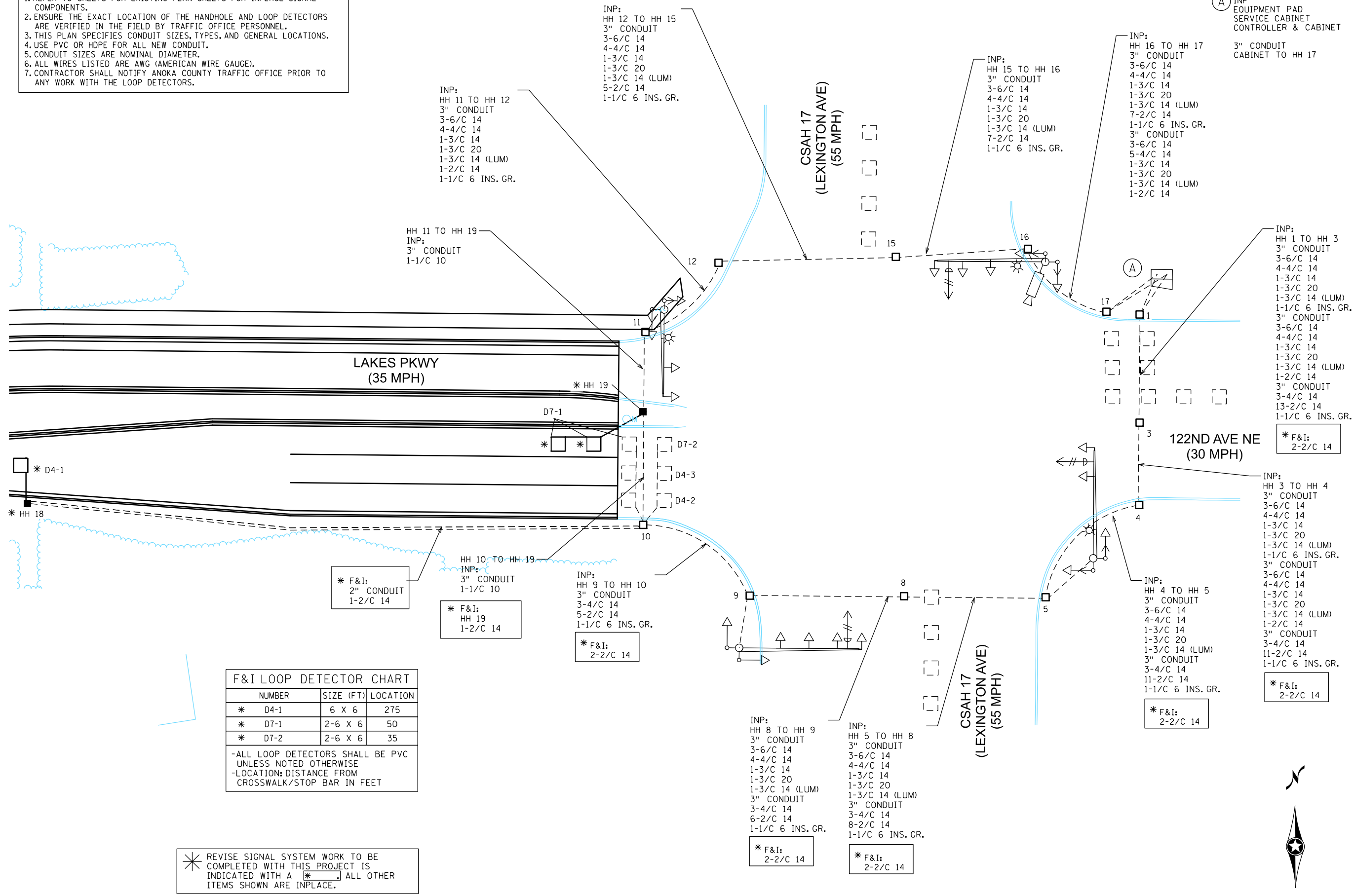
REVISE SIGNAL SYSTEM

CITY PROJECT 25-04 SHEET 65 OF 72 SHEETS

NOTES: \*

- REFER TO SHEETS FOR EXISTING PLAN SHEETS FOR INPLACE SIGNAL COMPONENTS.
- ENSURE THE EXACT LOCATION OF THE HANDHOLE AND LOOP DETECTORS ARE VERIFIED IN THE FIELD BY TRAFFIC OFFICE PERSONNEL.
- THIS PLAN SPECIFIES CONDUIT SIZES, TYPES, AND GENERAL LOCATIONS.
- USE PVC OR HDPE FOR ALL NEW CONDUIT.
- CONDUIT SIZES ARE NOMINAL DIAMETER.
- ALL WIRES LISTED ARE AWG (AMERICAN WIRE GAUGE).
- CONTRACTOR SHALL NOTIFY ANOKA COUNTY TRAFFIC OFFICE PRIOR TO ANY WORK WITH THE LOOP DETECTORS.

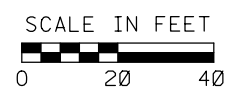
PATH & FILENAME: Projects\Minnesota\026198-000\05\_Discipline\Roadway\03\_Sheets\026198-000-445sgp-plan-001 PLOTTED/REVISED: 7/7/2025 4:13:25 PM



NUMBER	SIZE (FT)	LOCATION
* D4-1	6 X 6	275
* D7-1	2-6 X 6	50
* D7-2	2-6 X 6	35

-ALL LOOP DETECTORS SHALL BE PVC UNLESS NOTED OTHERWISE  
-LOCATION: DISTANCE FROM CROSSWALK/STOP BAR IN FEET

\* REVISE SIGNAL SYSTEM WORK TO BE COMPLETED WITH THIS PROJECT IS INDICATED WITH A \* ALL OTHER ITEMS SHOWN ARE INPLACE.







WSB PROJECT NO.:  
028333-000

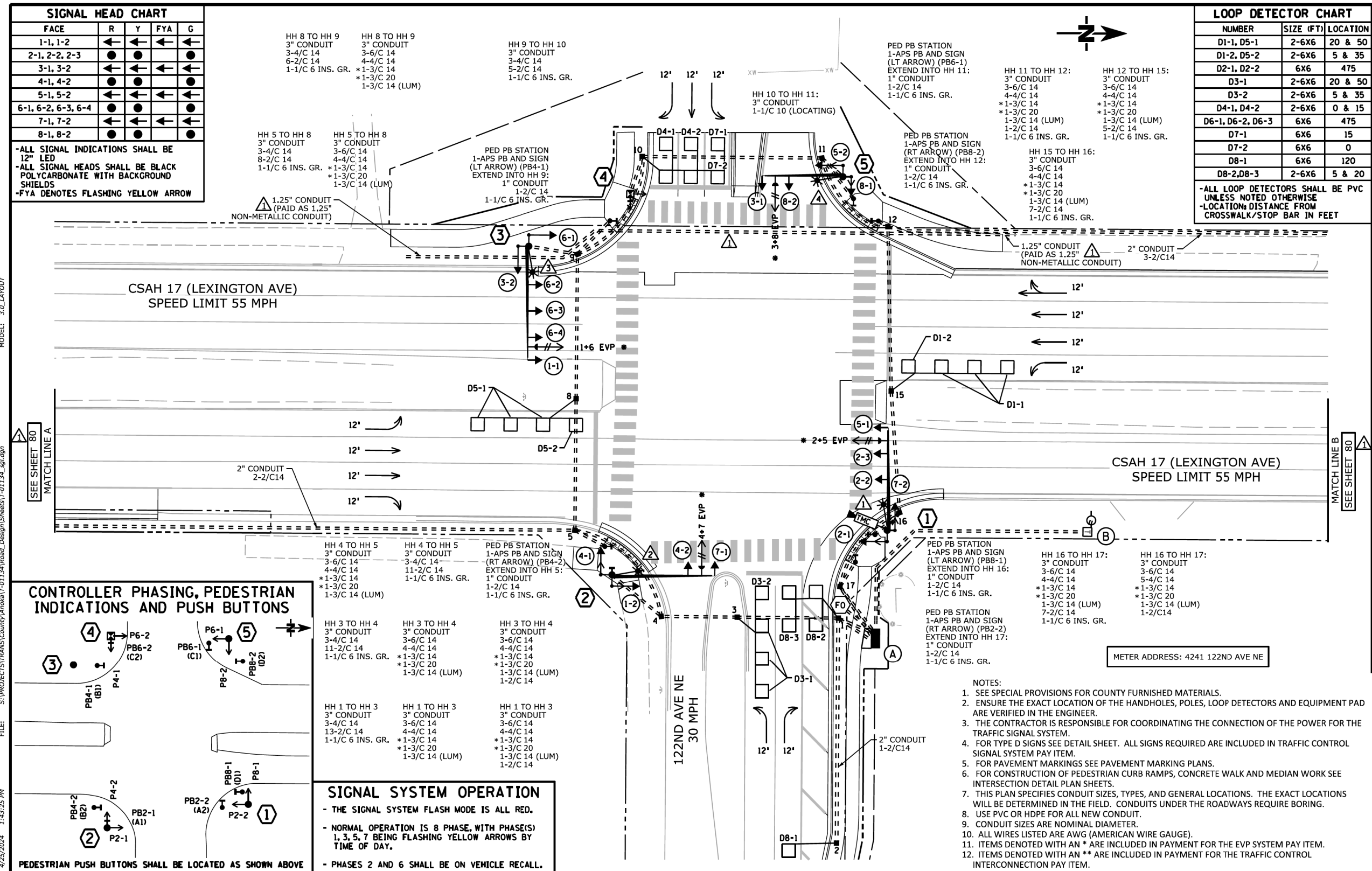
SCALE: AS SHOWN  
DESIGN BY:  
CHECK BY:

NO.	DATE	DESCRIPTION

CITY OF BLAINE, MN  
LAKES PARKWAY AND  
ZEST STREET  
CONSTRUCTION  
SAP 106-143-003  
SAP 106-144-001

REVISE SIGNAL SYSTEM

CITY PROJECT 25-04  
SHEET 67 OF 72 SHEETS

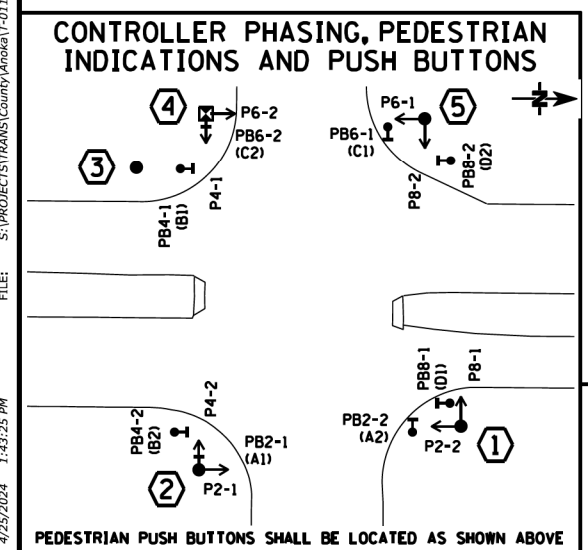


FACE	R	Y	FYA	G
1-1, 1-2	←	←	←	←
2-1, 2-2, 2-3	●	●	●	●
3-1, 3-2	←	←	←	←
4-1, 4-2	●	●	●	●
5-1, 5-2	←	←	←	←
6-1, 6-2, 6-3, 6-4	●	●	●	●
7-1, 7-2	←	←	←	←
8-1, 8-2	●	●	●	●

-ALL SIGNAL INDICATIONS SHALL BE 12" LED  
-ALL SIGNAL HEADS SHALL BE BLACK POLYCARBONATE WITH BACKGROUND SHIELDS  
-FYA DENOTES FLASHING YELLOW ARROW

NUMBER	SIZE (FT)	LOCATION
D1-1, D5-1	2-6X6	20 & 50
D1-2, D5-2	2-6X6	5 & 35
D2-1, D2-2	6X6	475
D3-1	2-6X6	20 & 50
D3-2	2-6X6	5 & 35
D4-1, D4-2	2-6X6	0 & 15
D6-1, D6-2, D6-3	6X6	475
D7-1	6X6	15
D7-2	6X6	0
D8-1	6X6	120
D8-2, D8-3	2-6X6	5 & 20

-ALL LOOP DETECTORS SHALL BE PVC UNLESS NOTED OTHERWISE  
-LOCATION & DISTANCE FROM CROSSWALK/STOP BAR IN FEET



**SIGNAL SYSTEM OPERATION**

- THE SIGNAL SYSTEM FLASH MODE IS ALL RED.
- NORMAL OPERATION IS 8 PHASE, WITH PHASE(S) 1, 3, 5, 7 BEING FLASHING YELLOW ARROWS BY TIME OF DAY.
- PHASES 2 AND 6 SHALL BE ON VEHICLE RECALL.

- NOTES:
- SEE SPECIAL PROVISIONS FOR COUNTY FURNISHED MATERIALS.
  - ENSURE THE EXACT LOCATION OF THE HANDHOLES, POLES, LOOP DETECTORS AND EQUIPMENT PAD ARE VERIFIED IN THE ENGINEER.
  - THE CONTRACTOR IS RESPONSIBLE FOR COORDINATING THE CONNECTION OF THE POWER FOR THE TRAFFIC SIGNAL SYSTEM.
  - FOR TYPE D SIGNS SEE DETAIL SHEET. ALL SIGNS REQUIRED ARE INCLUDED IN TRAFFIC CONTROL SIGNAL SYSTEM PAY ITEM.
  - FOR PAVEMENT MARKINGS SEE PAVEMENT MARKING PLANS.
  - FOR CONSTRUCTION OF PEDESTRIAN CURB RAMP, CONCRETE WALK AND MEDIAN WORK SEE INTERSECTION DETAIL PLAN SHEETS.
  - THIS PLAN SPECIFIES CONDUIT SIZES, TYPES, AND GENERAL LOCATIONS. THE EXACT LOCATIONS WILL BE DETERMINED IN THE FIELD. CONDUITS UNDER THE ROADWAYS REQUIRE BORING.
  - USE PVC OR HDPE FOR ALL NEW CONDUIT.
  - CONDUIT SIZES ARE NOMINAL DIAMETER.
  - ALL WIRES LISTED ARE AWG (AMERICAN WIRE GAUGE).
  - ITEMS DENOTED WITH AN \* ARE INCLUDED IN PAYMENT FOR THE EVP SYSTEM PAY ITEM.
  - ITEMS DENOTED WITH AN \*\* ARE INCLUDED IN PAYMENT FOR THE TRAFFIC CONTROL INTERCONNECTION PAY ITEM.

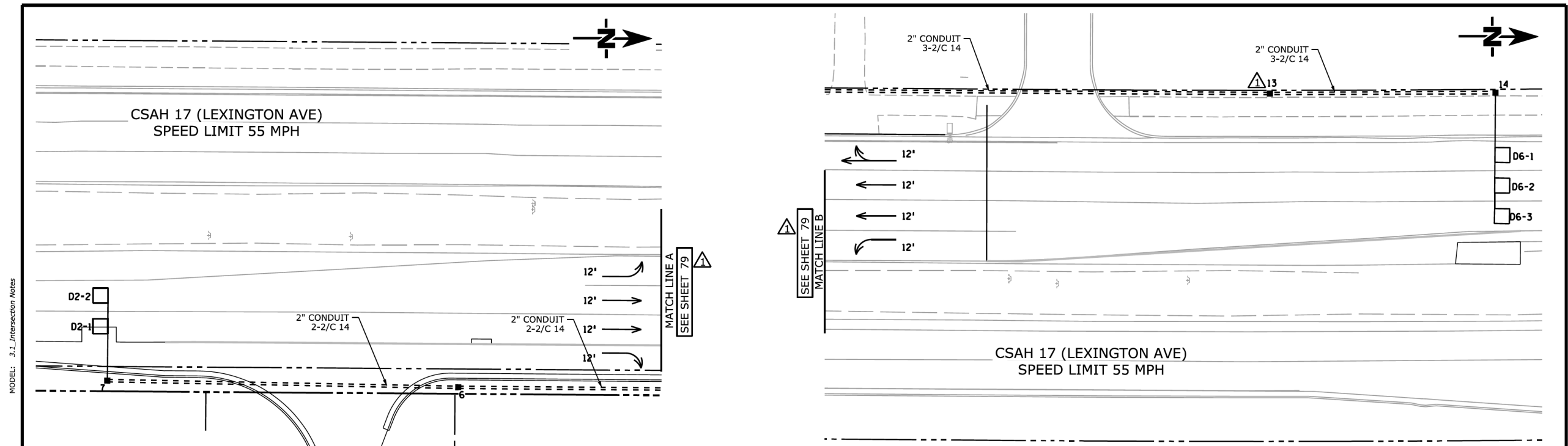
EXISTING SIGNAL PLAN SHEET



WSB PROJECT NO.: 028333-000

SCALE: AS SHOWN DESIGN BY: PLAN BY: CHECK BY:

NO.	DATE	DESCRIPTION



**4** X: 526704.73  
Y: 156974.26  
PEDESTAL POLE FOUNDATION  
10' PEDESTAL POLE PLUS BASE  
2-STRAIGHT MOUNT C.D. PED HEADS AT 0 AND 90 DEG  
1-APS PB AND SIGN (RT ARROW) (PB6-2)  
AND APS PB MOUNTING SPACERS  
3" CONDUIT TO HH 10:  
3-4/C 14  
1-2/C 14  
1-1/2" 6 INS. GR.

**3** X: 526728.49  
Y: 156928.07  
PA100 POLE FOUNDATION  
TYPE PA100-A50-D30-9 (DAVIT AT 350 DEG)  
1-ANGLE MOUNT SIGNAL AT 0'  
3-STRAIGHT MOUNT SIGNALS AT 11', 23' AND 35'  
2-ANGLE MOUNT SIGNALS AT 90 AND 180 DEG  
1-ONE WAY EVP DETECTOR AND CONFIRMATORY LIGHT (PHASES 1+6)  
LUMINAIRE-LED (FOR 30' MOUNTING HEIGHT)  
1-R10-X12 SIGN ADJACENT TO HEAD (5-1)  
1-SIGN (122ND AVE NE) (SEE SIGN DETAILS)  
3" CONDUIT TO HH 4:  
3-6/C 14  
4-4/C 14  
\* 1-3/C 14  
\* 1-3/C 20  
1-3/C 14 (LUM)  
1-1/2" 6 INS. GR.

**2** X: 526878.02  
Y: 156965.91  
PA100 POLE FOUNDATION  
TYPE PA100-A45-D30-9 (DAVIT AT 350 DEG)  
1-ANGLE MOUNT SIGNAL AT 0'  
1-STRAIGHT MOUNT SIGNAL AT 12'  
2-ANGLE MOUNT SIGNALS AT 90 AND 180 DEG  
2-ANGLE MOUNT C.D. PED HEADS AT 90 AND 180 DEG  
1-ONE WAY EVP DETECTOR AND CONFIRMATORY LIGHT (PHASES 4+7)  
LUMINAIRE-LED (FOR 30' MOUNTING HEIGHT)  
1-APS PB AND SIGN (LT ARROW) (PB2-1)  
AND APS POLE MOUNT ADAPTOR  
1-R10-X12 SIGN ADJACENT TO HEAD (7-1)  
1-SIGN (LEXINGTON AVE) (SEE SIGN DETAILS)  
1-R6-1L SIGN AT 90 DEG  
1-R6-1R SIGN AT 270 DEG  
3" CONDUIT TO HH 4:  
3-6/C 14  
4-4/C 14  
\* 1-3/C 14  
\* 1-3/C 20  
1-3/C 14 (LUM)  
1-2/C 14  
1-1/2" 6 INS. GR.

**5** X: 526696.85  
Y: 157071.01  
PA90 POLE FOUNDATION  
TYPE PA90-A35-D30-9 (DAVIT AT 350 DEG)  
1-ANGLE MOUNT SIGNAL AT 0'  
1-STRAIGHT MOUNT SIGNAL AT 12'  
2-ANGLE MOUNT SIGNALS AT 90 AND 180 DEG  
2-ANGLE MOUNT C.D. PED HEADS AT 90 AND 180 DEG  
1-ONE WAY EVP DETECTOR AND CONFIRMATORY LIGHT (PHASES 3+8)  
LUMINAIRE-LED (FOR 30' MOUNTING HEIGHT)  
1-R10-X12 SIGN ADJACENT TO HEAD (3-1)  
1-SIGN (LEXINGTON AVE) (SEE SIGN DETAILS)  
1-R6-1L SIGN AT 90 DEG  
1-R6-1R SIGN AT 270 DEG  
3" CONDUIT TO HH 6:  
3-6/C 14  
4-4/C 14  
\* 1-3/C 14  
\* 1-3/C 20  
1-3/C 14 (LUM)  
1-1/2" 6 INS. GR.

**1** X: 526857.78  
Y: 157091.13  
PA100 POLE FOUNDATION  
TYPE PA100-A45-X6-300/CAM 350 (DAVIT AT 350 DEG)  
(INCLUDES LIGHTNING ROD, 7/16" GROUND BRAID AND GROUND ROD)  
1-TRAFFIC MANAGEMENT CAMERA (COUNTY FURNISHED)  
1-ANGLE MOUNT SIGNAL AT 0'  
2-STRAIGHT MOUNT SIGNAL AT 12' AND 24'  
2-ANGLE MOUNT SIGNALS AT 90 AND 180 DEG  
2-ANGLE MOUNT C.D. PED HEADS AT 90 AND 180 DEG  
1-ONE WAY EVP DETECTOR AND CONFIRMATORY LIGHT (PHASES 2+5)  
LUMINAIRE-LED (FOR 30' MOUNTING HEIGHT)  
1-R10-X12 SIGN ADJACENT TO HEAD (5-1)  
1-SIGN (122ND AVE NE) (SEE SIGN DETAILS)  
3" CONDUIT TO HH 8:  
3-6/C 14  
5-4/C 14  
\* 1-3/C 14  
\* 1-3/C 20  
1-3/C 14 (LUM)  
1-1/2" 6 INS. GR.  
1-7/16" GROUNDING BRAID TO GROUND ROD IN HH 8  
1-CAT 5E (TRA MGMT CAM)

**A** EQUIPMENT PAD (SEE DETAIL SHEET)  
SERVICE CABINET (SSB) WITH BATTERY BACKUP SYSTEM AND BATTERIES  
CONTROLLER AND CABINET (COUNTY FURNISHED)  
3" CONDUIT TO HH 1: 3-6/C 14  
3-6/C 14  
4-4/C 14  
\* 1-3/C 14  
\* 1-3/C 20  
3" CONDUIT TO HH 1: 3-4/C 14  
16-2/C 14  
1-1/2" 6 INS. GR.  
3" CONDUIT TO HH 17: 3-6/C 14  
5-4/C 14  
\* 1-3/C 14  
\* 1-3/C 20  
1-2/C 14

3" CONDUIT TO HH 1: 3-6/C 14  
4-4/C 14  
\* 1-3/C 14  
\* 1-3/C 20  
1-2/C 14  
3" CONDUIT TO HH 17: 3-6/C 14  
4-4/C 14  
1-3/C 14  
\* 1-3/C 20  
\* 3-2/C 14  
1-1/2" 6 INS. GR.

GROUND WIRE AND GROUND ROD - MIN. 8' OUT FROM PAD  
2-2" AND 1-3" CONDUIT STUBBED OUT (CAPPED BOTH ENDS)

\*\* 1.5" CONDUIT TO FO VAULT:  
\*\* 2-12 SM FO CABLE

CONTROLLER CABINET TO SERVICE CABINET:  
2" CONDUIT  
3-1/2" 6

CONTROLLER CABINET TO SERVICE CABINET (COMMS):  
2" CONDUIT  
1-CAT5E (600V RATED)  
1-4/C 14

SERVICE CABINET TO SGP:  
2" CONDUIT AND LONG SWEEP ELBOW STUBBED OUT 5' FROM EDGE OF EQUIPMENT PAD (BY CONTRACTOR)  
SERVICE CONDUCTORS (BY CONNEXUS)

SERVICE CABINET TO HH 1:  
2" CONDUIT  
2-3/C 14 (LUM)  
SERVICE CABINET TO HH 17:  
2" CONDUIT  
2-3/C 14 (LUM)  
SERVICE CABINET TO EXTERNAL GR. RD.:  
1" CONDUIT  
1-1/2" 6 INS. GR.  
(SEE EQUIPMENT PAD LAYOUT)

**B** SGP - GROUND MOUNTED TRANSFORMER (CONNEXUS ENERGY)  
2" CONDUIT & SERVICE CONDUCTORS TO SERVICE CABINET (BY CONNEXUS ENERGY)

METER ADDRESS: 4241 122ND AVE NE

**NOTES:**  
1. ITEMS DENOTED WITH AN \* ARE INCLUDED IN PAYMENT FOR THE EVP SYSTEM PAY ITEM.  
2. ITEMS DENOTED WITH AN \*\* ARE INCLUDED IN PAYMENT FOR THE TRAFFIC CONTROL INTERCONNECTION PAY ITEM.

EXISTING SIGNAL PLAN SHEET

REVISE SIGNAL SYSTEM





WSB PROJECT NO.: 028333-000

SCALE: AS SHOWN  
DESIGN BY:  
PLAN BY: CHECK BY:

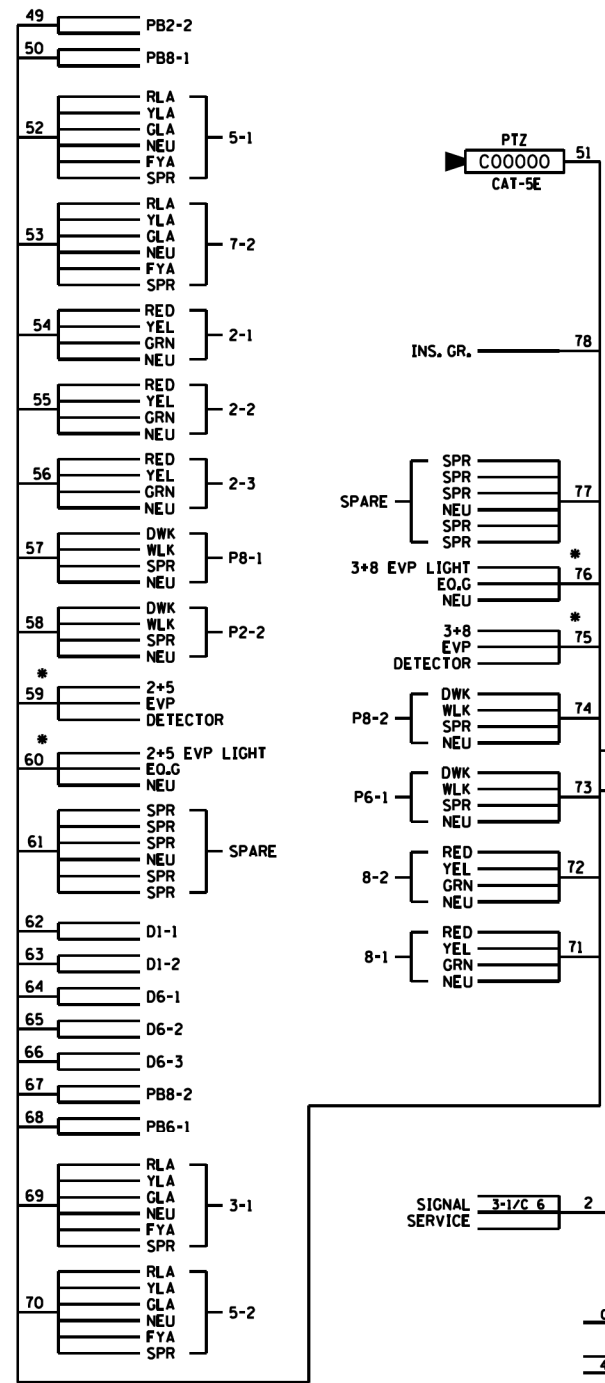
NO.	DATE	DESCRIPTION

CITY OF BLAINE, MN  
LAKES PARKWAY AND  
ZEST STREET  
CONSTRUCTION  
SAP 106-143-003  
SAP 106-144-001

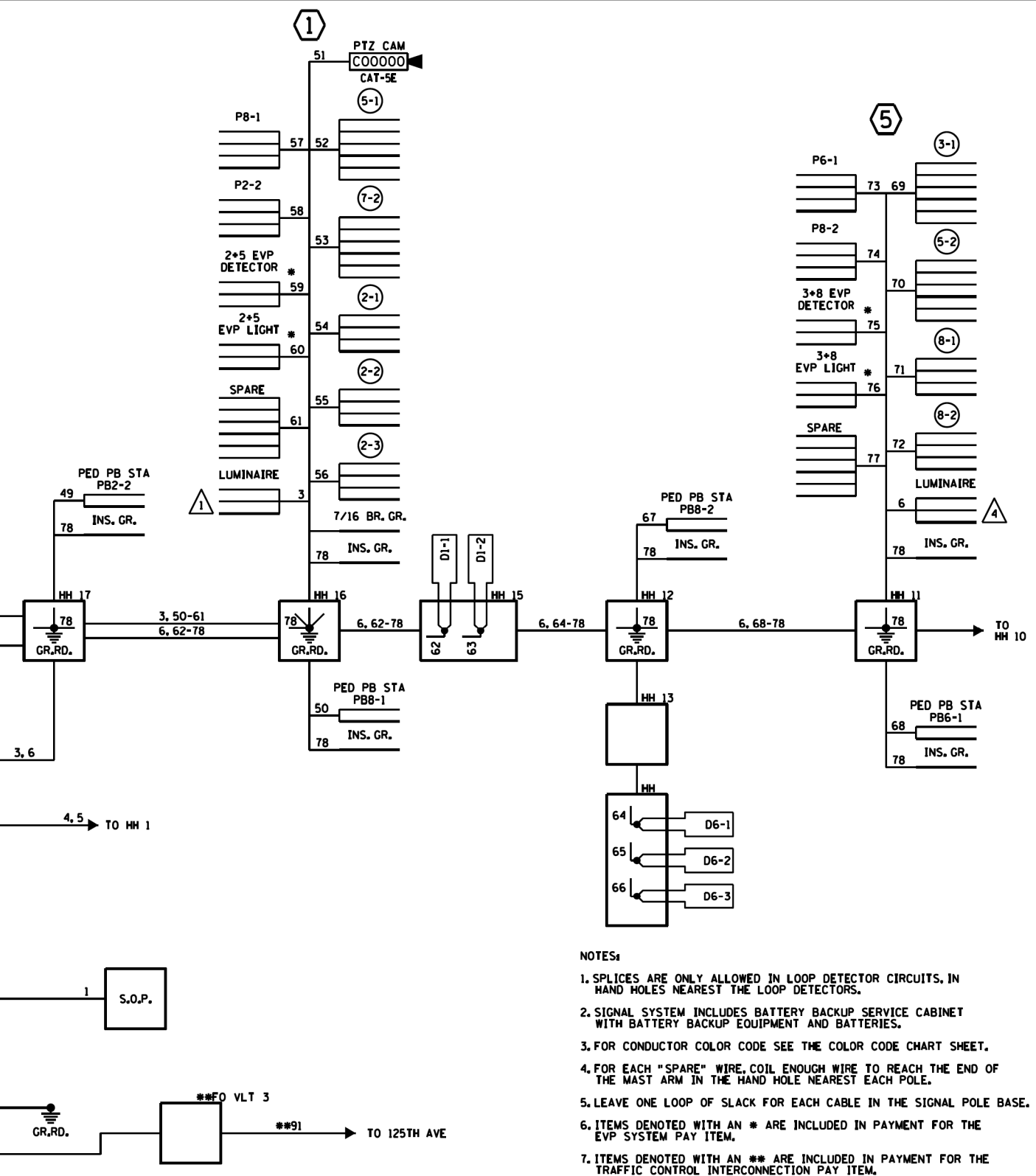
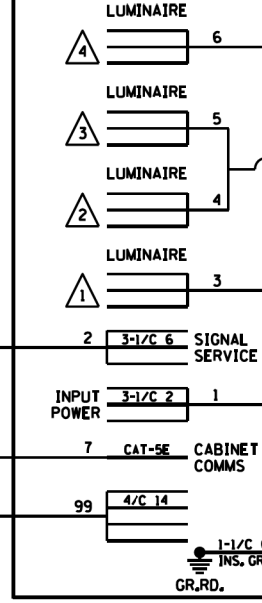
REVISE SIGNAL SYSTEM

CITY PROJECT 25-04  
SHEET 70 OF 72 SHEETS

# CONTROLLER CABINET



# SERVICE CABINET



- NOTES:
- SPLICES ARE ONLY ALLOWED IN LOOP DETECTOR CIRCUITS, IN HAND HOLES NEAREST THE LOOP DETECTORS.
  - SIGNAL SYSTEM INCLUDES BATTERY BACKUP SERVICE CABINET WITH BATTERY BACKUP EQUIPMENT AND BATTERIES.
  - FOR CONDUCTOR COLOR CODE SEE THE COLOR CODE CHART SHEET.
  - FOR EACH "SPARE" WIRE, COIL ENOUGH WIRE TO REACH THE END OF THE MAST ARM IN THE HAND HOLE NEAREST EACH POLE.
  - LEAVE ONE LOOP OF SLACK FOR EACH CABLE IN THE SIGNAL POLE BASE.
  - ITEMS DENOTED WITH AN \* ARE INCLUDED IN PAYMENT FOR THE EVP SYSTEM PAY ITEM.
  - ITEMS DENOTED WITH AN \*\* ARE INCLUDED IN PAYMENT FOR THE TRAFFIC CONTROL INTERCONNECTION PAY ITEM.

## EXISTING SIGNAL PLAN SHEET