

BIU 1 (P1) ADDRESS=01

SIDE A		SIDE B		
PIN	FUNCTION	TERM	FUNCTION	TERM
1	+24 VDC	*	+24 VDC	E12
2	LS1 RED	LS1-6	LS1 YEL	LS1-8
3	LS1 GRN	LS1-10	LS2 RED	LS1-6
4	LS2 YEL	LS2-8	LS2 GRN	LS2-10
5	LS3 RED	LS3-6	LS3 YEL	LS3-8
6	LS3 GRN	LS3-10	LS4 RED	LS4-6
7	LS4 YEL	LS4-8	LS4 GRN	LS4-10
8	LS5 RED	LS5-6	LS5 YEL	LS5-8
9	LS5 GRN	LS5-10	LS6 RED	LS6-6
10	LS6 YEL	LS6-8	LS6 GRN	LS6-10
11	LS7 RED	LS7-6	LS7 YEL	LS7-8
12	LS7 GRN	LS7-10	LS8 RED	LS8-6
13	LS8 YEL	LS8-8	LS8 GRN	LS8-10
14	TBC AUX 1	D7	TBC AUX 2	D8
15	PREEMPT 1 OUT	B5	PREEMPT 2 OUT	B6
16	PREEMPT 1 CALL	A5	PREEMPT 2 IN	A6
17	TEST A	C7	TEST B	C8
18	FLASH IN	C12	DIM ENABLE	C13
19	MAN CONT.	C1	INT ADV	C2
20	EXT MIN RECALL	C3	EXT RESTART	C9
21	TBC ON LINE	C10	STOP TIME R1	C16
22	STOP TIME R2	D16	MAX IIR	C5
23	MAX IIR	D5	FORCE OFF R1	C6
24	FORCE OFF R2	D6	CALL NON-ACT1	D1
25	WALK REST MOD	D3	Ø1 PED ISO	A1
26	Ø2 PED ISO	A2	Ø3 PED ISO	A3
27	Ø4 PED ISO	A4	PED ISO COMM	E11
28	ADD SELECT 0	-----	ADD SELECT 1	-----
29	ADD SELECT 2	-----	ADD SELECT 3	-----
30	RESERVED	-----	RESERVED	-----
31	EQUIP GND	E19	LINE FREQ REF	E18
32	LOGIC GND	E16	LOGIC GND	*

BIU 2 (P2) ADDRESS=11

SIDE A		SIDE B		
PIN	FUNCTION	TERM	FUNCTION	TERM
1	+24 VDC	*	+24 VDC	E12
2	LS9 GRN	LS9-6	LS9 YEL	A11
3	LS9 RED	LS9-10	LS10 YEL	LS10-6
4	LS10 YEL	A12	LS10 GRN	LS10-10
5	LS11 RED	LS11-6	LS11 YEL	B11
6	LS11 GRN	LS11-10	LS12 RED	LS12-6
7	LS12 YEL	B12	LS12 GRN	LS12-10
8	LS13 RED	LS13-6	LS13 YEL	LS13-8
9	LS13 GRN	LS13-10	LS14 RED	LS14-6
10	LS14 YEL	LS14-8	LS14 GRN	LS14-10
11	LS15 RED	B16	LS15 YEL	B15
12	LS15 GRN	LS15-10	LS16 RED	B17
13	LS16 YEL	B18	LS16 GRN	LS16-10
14	TBC AUX 3 OUT	D9	COORD STATUS	C11
15	PREEMPT 3 OUT	B7	PREEMPT 4 OUT	B8
16	PREEMPT 5 OUT	B9	PREEMPT 6 OUT	B10
17	PREEMPT 3 CALL	A7	PREEMPT 4 CALL	A8
18	PREEMPT 5 CALL	A9	PREEMPT 6 CALL	A10
19	CALL NON-ACT 2	D2	SPARE 1	D10
20	SPARE 2	D11	SPARE 3	D12
21	SPARE 4	D13	INHIBIT MAX 1	C4
22	INHIBIT MAX 2	D4	LOCAL FLASH	C19
23	MMU FLASH	C20	ALARM 1	C14
24	ALARM 2	C15	RESERVED	-----
25	RESERVED	-----	Ø5 PED ISO	B1
26	Ø6 PED ISO	B2	Ø7 PED ISO	B3
27	Ø8 PED ISO	B4	PED ISO COMM	E11
28	ADD SELECT 0	P2-32B	ADD SELECT 1	-----
29	ADD SELECT 2	-----	ADD SELECT 3	-----
30	RESERVED	-----	RESERVED	-----
31	EQUIP GND	E19	LINE FREQ REF	E18
32	LOGIC GND	E16	LOGIC GND	P2-28A

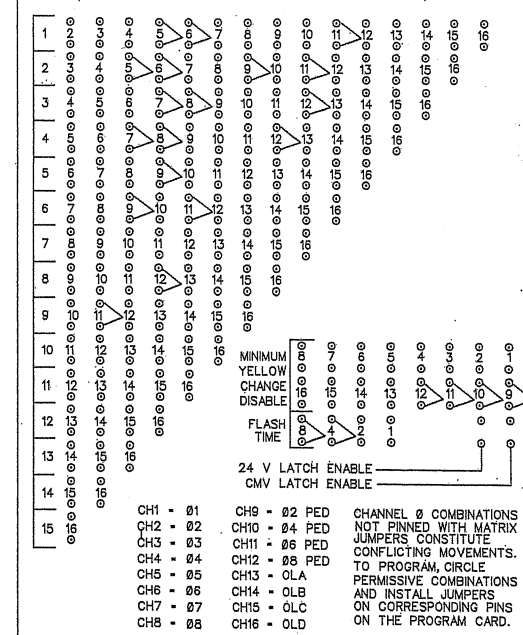
A		B		
PIN	FUNCTION	TERM	FUNCTION	TERM
Ø1	PED IN	P1-25B	Ø5 PED IN	P1-24B
Ø2	PED IN	P1-26A, DH2.2-22	Ø6 PED IN	P1-25A
Ø3	PED IN	P1-26B	Ø7 PED IN	P1-25A
Ø4	PED IN	P1-27A, DH2.2-23	Ø8 PED IN	P1-25A
PMT 1 IN	P1-16A	5	P1-15A	Ø8 PMT 1 OUT
PMT 2 IN	P1-16B	6	P1-15B	Ø8 PMT 2 OUT
PMT 3 IN	P2-17A, DH2.1-22	7	P2-15A, LS9-8	Ø8 PMT 3 OUT
PMT 4 IN	P2-17B, DH2.1-23	8	P2-15B, LS10-8	Ø8 PMT 4 OUT
PMT 5 IN	P2-18A, DH2.1-24	9	P2-16A, LS11-8	Ø8 PMT 5 OUT
PMT 6 IN	P1-18B, DH2.1-25	10	P2-16B, LS12-8	Ø8 PMT 6 OUT
LS9 YEL	P2-2B	11	P2-5B	Ø8
LS10 YEL	P2-4A	12	P2-7A	LS12 YEL

C		D		
PIN	FUNCTION	TERM	FUNCTION	TERM
MAN. CONT. ENB	P1-19A	1	P1-24B	NON ACT 1
INT. ADV	P1-19B	2	P1-24B	NON ACT 11
MIN. RECALL	P1-20A	3	P1-25A	WK RST MOD
INH. MAX R1	P1-21B	4	P2-22A	INH MAX R2
MAX 2 R1	P1-22B	5	P1-23A	MAX 2 R2
F.O. R1	P1-23B	6	P1-24A	F.O. R2
TEST A	P1-17A	7	P1-14A	TBC *1
TEST B	P1-17B	8	P1-14B	TBC *2
EXT RESTART	P1-20B	9	P2-14A	TBC *3
TBC ON LINE	P1-21A	10	P2-19B	SPARE 1
CRD STAT	P1-14B	11	P2-20A	SPARE 2
FLASH	702B, P1-18A	12	P2-20B	SPARE 3
ALARM 1	P1-18B	13	P2-21A	SPARE 4
ALARM 2	P2-23B	14	-----	-----
STOP TMR R1	P1-21B, S6-3	15	P1-22A	STOP TMR R2
LOC FLASH	P2-22B, S1-7	16	-----	-----
MMU FLASH	P2-23A, MU1-1	17	-----	-----

E		F		
PIN	FUNCTION	TERM	FUNCTION	TERM
MU1-B	1	MU1-CC	1	MU1-CC
MU1-C	2	MU1-DD	2	MU1-DD
MU1-D	3	MU1-GG	3	MU1-GG
MU1-E	4	MU2-C	4	MU2-C
MU1-F	5	MU2-P	5	MU2-P
MU1-G	6	MU2-S	6	MU2-S
MU1-H	7	MU2-B	7	MU2-B
MU1-AA	8	MU2-C	8	MU2-C
MU1-BB	9	-----	-----	-----
MU1-CA	10	-----	-----	-----
MU1-DB	11	MU2-R	11	MU2-R
MU1-EB	12	-----	-----	-----
MU1-FA	13	400B	13	+24 VDC
MU1-GA	14	S1-B	14	-----
MU1-HA	15	-----	-----	-----
MU1-IA	16	398A	16	LG GND
MU1-JA	17	393B	17	12 VAC
MU1-KA	18	397B	18	FREQ REF
MU1-LA	19	MU1-SH 412B	19	EQUIP GND
MU1-MA	20	414B, MU1-V	20	AC-
MU1-NA	21	419A	21	AC FAIL
MU1-PA	22	421A	22	FLASH CONT
MU1-QA	23	422A	23	RED ENABLE
MU1-RA	24	423A, MU2-U	24	CONTROLLER
MU1-SA	25	AC-	25	AC-
MU1-TA	26	420A	26	FLASH AC-

MALFUNCTION MANAGEMENT UNIT

MU1		MU2			
PIN	FUNCTION	TERM	PIN	FUNCTION	TERM
SH1	SHELL GROUND	MU1-U, F19	SH1	SHELL GROUND	F19
A	AC LINE	E25	A	AC LINE	E25
B	RELAY 1 N/O	E1	B	DELAY RELAY COMM	E24
C	RELAY 2 N/C	E2	C	DELAY RELAY N/O	F4
D	CH 12 GRN	270A	D	CH 11 RED	274A
E	CH 11 GRN	284A	E	CH 9 RED	268A
F	CH 10 GRN	258A	F	CH 8 RED	256A
G	CH 9 GRN	252A	G	CH 7 RED	248A
H	CH 8 GRN	244A	H	CH 6 RED	242A
I	CH 7 GRN	238A	I	CH 5 RED	236A
J	CH 6 GRN	232A	J	CH 4 RED	230A
K	CH 5 GRN	226A	K	CH 2 RED	224A
L	CH 4 GRN	220A	L	CH 1 RED	212A
M	CH 3 GRN	214A	M	PL SPARE 1	208A
N	CH 2 GRN	208A	N	RL +24V MONITOR I	F8
O	EQUIP GND	202A	O	SL SPARE 2	F6
P	SH +24V MONITOR II	E13	P	TL LOGIC GROUND	F11
Q	LOGIC GROUND	E14	Q	TL CH 13 RED	280
R	EQUIP GND	SHELL	R	UL DELAY RELAY N/C	F24
S	AC-(NEUTRAL)	F20	S	VL CH 10 RED	262A
T	RELAY 1 COMMON	E26	T	WL CH 14 RED	286A
U	RELAY 2 COMMON	E14	U	XL CH 15 RED	292A
V	CH 11 YEL	272A	V	YL CH 16 RED	298A
W	CH 10 YEL	266A	W	ZL CH 3 YEL	218A
X	CH 9 YEL	E3	X	CH 10 YEL	260A
Y	CH 8 YEL	254A	Y	CH 9 YEL	246A
Z	CH 7 YEL	246A	Z	CH 8 YEL	240A
AA	CH 6 YEL	238A	AA	CH 7 YEL	234A
AB	CH 5 YEL	230A	AB	CH 6 YEL	228A
AC	CH 4 YEL	224A	AC	CH 5 YEL	218A
AD	CH 3 YEL	216A	AD	CH 4 YEL	208A
AE	CH 2 YEL	208A	AE	CH 3 YEL	202A
AF	CH 1 YEL	204A	AF	CH 2 YEL	200A
AG	CONT. VOLT. MON.	E10	AG	CH 1 YEL	200A
AH	+24V MONITOR INHIBIT	E11	AH	CONT. VOLT. MON.	E10
AI	RELAY 1 N/O	E21	AI	+24V MONITOR INHIBIT	E11
AJ	RELAY 2 N/O	C20	AJ	RELAY 1 N/O	E21
AK	CH 12 WK	E5	AK	RELAY 2 N/O	C20
AL	CH 11 WK	E6	AL	CH 12 WK	E5
AM	CH 10 WK	E7	AM	CH 11 WK	E6
AN	CH 9 WK	E8	AN	CH 10 WK	E7
AO	CH 8 YEL	296A	AO	CH 9 WK	E8
AP	CH 7 YEL	290A	AP	CH 8 YEL	296A
AQ	CH 6 YEL	278A	AQ	CH 7 YEL	290A
AR	CH 5 YEL	222A	AR	CH 6 YEL	278A
AS	CH 4 YEL	282A	AS	CH 5 YEL	222A
AT	CH 3 GRN	276A	AT	CH 4 YEL	282A
AA	SPARE 1	E8	AT	CH 3 GRN	276A
AB	RESET	E9	AA	SPARE 1	E8
AC	CAB INTERLOCK A	F1	AB	RESET	E9
AD	CAB INTERLOCK B	F2	AC	CAB INTERLOCK A	F1
AE	CH 14 YEL	284A	AD	CAB INTERLOCK B	F2
AF	CH 16 WK	294A	AE	CH 14 YEL	284A
AG	SPARE 2	F3	AF	CH 16 WK	294A
AH	TYPE SELECT	E15	AG	SPARE 2	F3

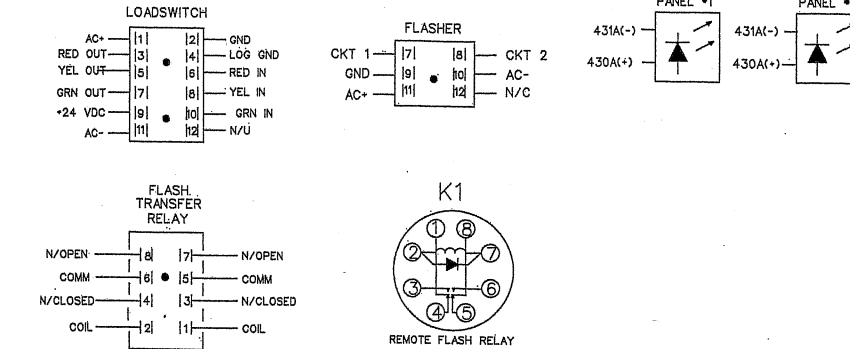


LOADSWITCH RACK 1 (BIU 2) ADDRESS = #01

LS	1	2	3	4	5	6	7	8
CONT Ø	1	2	3	4	5	6	7	8
PLAN Ø	1	2	3	4	5	6	7	8
GREEN / WALK	10	P1-3A	P1-4B	P1-6A	P1-7B	P1-9A	P1-10B	P1-12A
YELLOW/PED CLR	8	P1-2B	P1-4A	P1-5B	P1-7A	P1-8B	P1-10A	P1-11B
RED/DON'T WALK	6	P1-2A	P1-3B	P1-5A	P1-6B	P1-8A	P1-9B	P1-11A
GREEN / WALK	7	201A	207A	213A	219A	225A	231A	243A
YELLOW	5	FP1-13	FP2-13	FP3-13	FP4-13	FP5-13	FP6-13	FP7-13
RED/DON'T WALK	3	FP1-1	FP2-1	FP3-1	FP4-1	FP5-1	FP6-1	FP7-1
+24 VDC	9	LS2-9	LS1-9	LS2-9	LS3-9	LS4-9	LS5-9	LS7-9
CHASSIS GROUND	2	GB1	GB1	GB1	GB1	GB1	GB1	GB1
AC COMMON	11	NB1	NB1	NB1	NB1	NB1	NB1	NB1
115 VAC	1	SB1	SB1	SB2	SB2	SB1	SB1	SB2

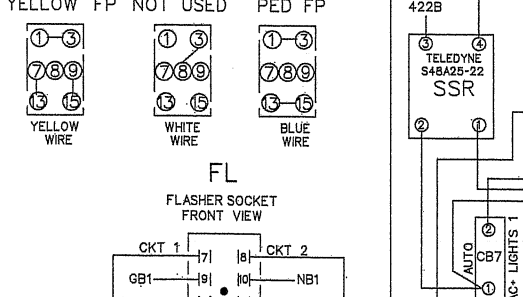
LOADSWITCH RACK 1 (BIU 1) ADDRESS = #11

LS	9	10	11	12	13	14	15	16
CONT Ø	2P	4P	6P	8P	OLA	OLB	OLC	OLD
PLAN Ø	2P	EVP	6P	8P	*	*	*	*
GREEN / WALK	10	P2-3A	P2-4B	P2-6A	P2-7B	P2-9A	P2-10B	P2-12A
YELLOW/PED CLR	8	B7	B8	B9	B10	P2-6B	P2-10A	P2-11B
RED/DON'T WALK	6	P2-2A	P2-3B	P2-5A	P2-6B	P2-8A	P2-9B	A16
GREEN / WALK	7	251A	255A	261A	267A	275A	281A	287A
YELLOW	5	FP9-13	FP10-13	FP11-13	FP12-13	FP13-13	FP14-13	FP15-13
RED/DON'T WALK	3	FP9-1	FP10-1	FP11-1	FP12-1	FP13-1	FP14-1	FP15-1
+24 VDC	9	LS1-9	LS9-9	LS10-9	LS11-9	LS14-9	LS15-9	E13
CHASSIS GROUND	2	GB1	GB1	GB1	GB1	GB1	GB1	GB1
AC	11	NB1	NB1	NB1	NB1	NB1	NB1	NB1
AC+	1	SB1	SB2	SB1	SB2	SB1	SB1	SB2

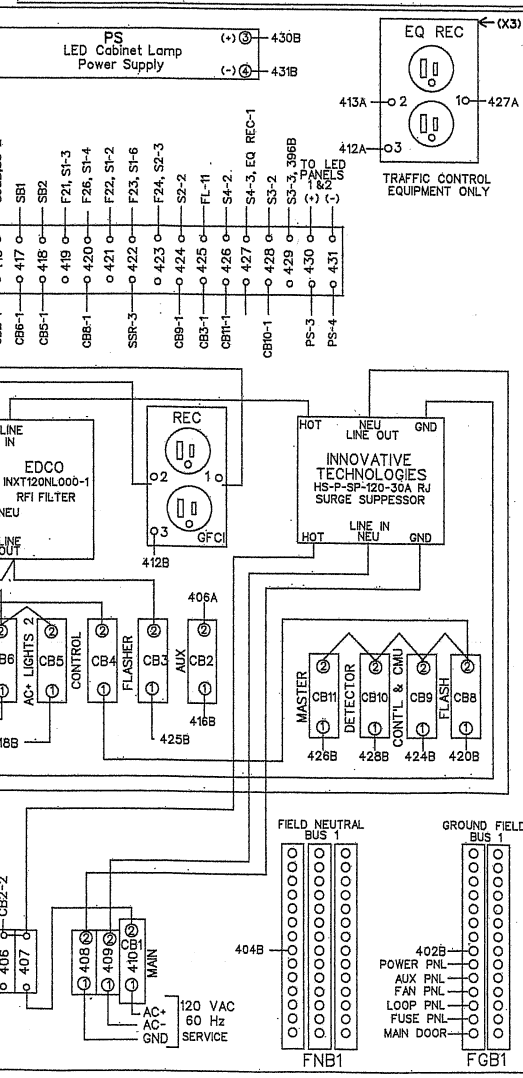
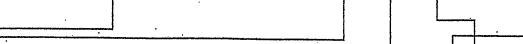


ALL SOCKETS ARE SHOWN FROM THE FRONT

FLASHING OUTPUT CONFIGURATION



FLASHER SOCKET FRONT VIEW



CIRCUIT BREAKERS

BEAKER	FUNCTION	AMPS
CB1	MAIN	30
CB2	AUXILIARY	15
CB3	FLASHER	15
CB4	CONTROL	15
CB5	AC+ LITES*2	15
CB6	AC+ LITES*1	15
CB7	AUTO	30
CB8	FLASH CIRCUIT	5
CB9	CONTROLLER & MMU	5
CB10	DETECTION	5
CB11	MASTER CONTROLLER	5

NOTE: THE JUMPERS BETWEEN 252 AND 254, 259 AND 260, 265 AND 266 AND 271 AND 272 ARE REMOVED SO THE MMU DOES NOT REACT TO THE EVP VERIFY LAMP DRIVER OUTPUTS. IF THESE TERMINALS ARE EVER USED FOR VEHICLE INDICATIONS THE JUMPERS MUST BE REINSTALLED.

NOTE: IF LOADSWITCHES LS9 THRU LS12 ARE USED ONLY FOR EVP VERIFY LIGHTS, REMOVE THE JUMPERS BETWEEN 251 AND 252 OR 257 AND 258 OR 263 AND 264 OR 269 AND 270 AS NEEDED FOR PROPER

PORT 1 INTERFACE

CONTROLLER COMM PORT	CONTR CP1	MMU CP2	TF*1 CP3	TF*3 CP4	DET RK1 CP5	DET RK2 CP6	SPARE CP7	SPARE CP8	EXT EQUIP COMM PORT
1 TX DATA +									1 RX DATA +
2 LGC GND									2 LGC GND
3 TX CLOCK +									3 RX CLOCK +
4 LGC GND									4 LGC GND
5 RX DATA +									5 TX DATA +
6 LGC GND									6 LGC GND
7 RX CLOCK +									7 TX CLOCK +
8 LGC GND									8 LGC GND
9 TX DATA -									9 RX DATA -
10 N/U									10 N/U
11 TX CLOCK -									11 RX CLOCK -
12 EQUIP GND									12 EQUIP GND
13 RX DATA -									13 TX DATA -
14 RESERVED									14 RESERVED
15 TX CLOCK -									15 RX CLOCK -
SHIELDABLE SHIELD									SHIELDABLE SHIELD

CONTROLLER COMM PORT 3 -CMP-

PIN	FUNCT	TERM
1	TRANSMIT 1	PC-2(R)
2	TRANSMIT 2	PC-4(G)
3	RECEIVE 1	PC-6(B)
5	RECEIVE 2	PC-8(W)

LEFT SIDE DETECTOR RACK

SA1 LEFT (SLOT ADDRESS 0)	SA1 RIGHT (SLOT ADDRESS 1)	SA2 LEFT (SLOT ADDRESS 2)	SA2 RIGHT (SLOT ADDRESS 3)	SA3 LEFT (SLOT ADDRESS 4)	SA3 RIGHT (SLOT ADDRESS 5)	SA4 LEFT (SLOT ADDRESS 6)	SA4 RIGHT (SLOT ADDRESS 7)	SA5 LEFT (EVP CHANNELS C & D)	SA5 RIGHT (EVP CHANNELS A & B)
TS2 INTERSECTION LOOP	TS2 INTERSECTION LOOP	TS2 INTERSECTION LOOP	TS2 INTERSECTION LOOP	TS2 INTERSECTION LOOP	TS2 INTERSECTION LOOP	TS2 INTERSECTION LOOP	TS2 INTERSECTION LOOP	PHASES	POLE
3 D5-1	1 D1-1	7 D2-1	5 D5-3	11 D6-2	9 D2-3	15 D3-3	13 D3-1	CHC 3/8	3
BIU 1 (ADDRESS 8)	4 D5-2	2 D1-2	6 D5-4	12 D6-3	10 D6-1	16 D3-4	14 D3-2	CHD 4/7	7
								CHA 1/6	1
								CHB 2/5	5

DETECTOR RACK HARNESS DH1.1

FEMALE DB25 CONNECTOR				MALE DB25 CONNECTOR			
TERM	FUNCT	PIN	TERM	TERM	FUNCT	PIN	TERM
303B	LOOP 1	1	14	318B	LOOP 13	1	14
304B	LOOP 2	2	15	319B	LOOP 14	2	15
306B	LOOP 3	3	16	321B	LOOP 15	3	16
307B	LOOP 4	4	17	322B	LOOP 16	4	17
308B	LOOP 5	5	18	323B	LOOP 17	5	18
309B	LOOP 6	6	19	324B	LOOP 18	6	19
311B	LOOP 7	7	20	325B	LOOP 19	7	20
312B	LOOP 8	8	21	326B	LOOP 20	8	21
313B	LOOP 9	9	22	327B	LOOP 21	9	22
314B	LOOP 10	10	23	328B	LOOP 22	10	23
315B	LOOP 11	11	24	329B	LOOP 23	11	24
316B	LOOP 12	12	25	330B	LOOP 24	12	25
317B	LOOP 13	13	26	331B	LOOP 25	13	26

RACK #1 (LEFT)

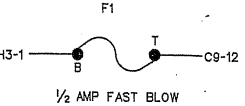
DETECTOR RACK CONNECTOR H1				DETECTOR RACK CONNECTOR H2			
MALE DB25 CONNECTOR				FEMALE DB25 CONNECTOR			
TERM	FUNCT	PIN	TERM	TERM	FUNCT	PIN	TERM
C2-D	LOOP 1	1	14	C4-P	LOOP 13	1	14
C2-E	LOOP 2	2	15	C4-R	LOOP 14	2	15
C2-J	LOOP 3	3	16	C4-U	LOOP 15	3	16
C2-K	LOOP 4	4	17	C4-V	LOOP 16	4	17
C2-P	LOOP 5	5	18	C4-W	LOOP 17	5	18
C2-R	LOOP 6	6	19	C4-X	LOOP 18	6	19
C2-U	LOOP 7	7	20	C4-Y	LOOP 19	7	20
C2-V	LOOP 8	8	21	C4-Z	LOOP 20	8	21
C4-D	LOOP 9	9	22	C4-AA	LOOP 21	9	22
C4-E	LOOP 10	10	23	C4-AB	LOOP 22	10	23
C4-J	LOOP 11	11	24	C4-AC	LOOP 23	11	24
C4-K	LOOP 12	12	25	C4-AD	LOOP 24	12	25

DETECTOR RACK HARNESS H3.1

PIN	FUNCT	TERM
1	AC+	396A
2	AC-	395A
3	EQUIP GND	394A
4	LINE FREQ REF	397A
5	+12 VDC	399A
6	+24 VDC	400A
7	LOGIC GND	398A

DETECTOR RACK CONNECTOR H3

PIN	FUNCT	TERM
1	AC+	FF-B
2	AC-	C10-M
3	EQUIP GND	CO-31A
4	LINE FREQ REF	CO-31B
5	+12 VDC	CO-2B
6	+24 VDC	CO-1B
7	LOGIC GND	CO-32A



CROSS REFERENCE SAMPLE:
DH1.2-9
DH1 CONNECTOR * RACK * PIN *

DETECTOR SLOT ADDRESS BIT CHART

SLOT	ADDRESS	BIT
C1	0	0 1 2
C2	1	X
C3	2	X
C4	3	X X
C5	4	X X
C6	5	X X
C7	6	X X
C8	7	X X X

RIGHT SIDE DETECTOR RACK

SA6 LEFT (SLOT ADDRESS 0)	SA6 RIGHT (SLOT ADDRESS 1)	SA7 LEFT (SLOT ADDRESS 2)	SA7 RIGHT (SLOT ADDRESS 3)	SA8 LEFT (SLOT ADDRESS 4)	SA8 RIGHT (SLOT ADDRESS 5)	SA9 LEFT (SLOT ADDRESS 6)	SA9 RIGHT (SLOT ADDRESS 7)	SA10 LEFT	SA10 RIGHT
TS2 INTERSECTION LOOP	TS2 INTERSECTION LOOP	TS2 INTERSECTION LOOP	TS2 INTERSECTION LOOP	TS2 INTERSECTION LOOP	TS2 INTERSECTION LOOP	TS2 INTERSECTION LOOP	TS2 INTERSECTION LOOP	PPB ISOLATION	PPB ISOLATION
19 D4-1	17 D7-1	23	21 D8-1	27	25	31	29	CH1 PH 6	CH1 PH 2
BIU 2 (ADDRESS 9)	20 D4-2	18 D7-2	24	22 D8-2	28	26	32	CH2 PH 8	CH2 PH 4

LOOP PANEL TO DETECTOR RACK HARNESS DH1.2

FEMALE DB25 CONNECTOR				MALE DB25 CONNECTOR			
TERM	FUNCT	PIN	TERM	TERM	FUNCT	PIN	TERM
353B	LOOP 17	1	14	368B	LOOP 29	1	14
354B	LOOP 18	2	15	369B	LOOP 30	2	15
356B	LOOP 19	3	16	371B	LOOP 31	3	16
357B	LOOP 20	4	17	372B	LOOP 32	4	17
358B	LOOP 21	5	18	373B	LOOP 33	5	18
359B	LOOP 22	6	19	374B	LOOP 34	6	19
361B	LOOP 23	7	20	375B	LOOP 35	7	20
362B	LOOP 24	8	21	376B	LOOP 36	8	21
363B	LOOP 25	9	22	377B	LOOP 37	9	22
364B	LOOP 26	10	23	378B	LOOP 38	10	23
366B	LOOP 27	11	24	379B	LOOP 39	11	24
367B	LOOP 28	12	25	380B	LOOP 40	12	25

RACK #2 (RIGHT)

DETECTOR RACK CONNECTOR H1				DETECTOR RACK CONNECTOR H2			
MALE DB25 CONNECTOR				FEMALE DB25 CONNECTOR			
TERM	FUNCT	PIN	TERM	TERM	FUNCT	PIN	TERM
C2-D	LOOP 17	1	14	C4-P	LOOP 29	1	14
C2-E	LOOP 18	2	15	C4-R	LOOP 30	2	15
C2-J	LOOP 19	3	16	C4-U	LOOP 31	3	16
C2-K	LOOP 20	4	17	C4-V	LOOP 32	4	17
C2-P	LOOP 21	5	18	C4-W	LOOP 33	5	18
C2-R	LOOP 22	6	19	C4-X	LOOP 34	6	19
C2-U	LOOP 23	7	20	C4-Y	LOOP 35	7	20
C2-V	LOOP 24	8	21	C4-Z	LOOP 36	8	21
C4-D	LOOP 25	9	22	C4-AA	LOOP 37	9	22
C4-E	LOOP 26	10	23	C4-AB	LOOP 38	10	23
C4-J	LOOP 27	11	24	C4-AC	LOOP 39	11	24
C4-K	LOOP 28	12	25	C4-AD	LOOP 40	12	25

DETECTOR RACK HARNESS H3.2

PIN	FUNCT	TERM
1	AC+	396A
2	AC-	395A
3	EQUIP GND	394A
4	LINE FREQ REF	397A
5	+12 VDC	399A
6	+24 VDC	400A
7	LOGIC GND	398A

DETECTOR RACK CONNECTOR H3

PIN	FUNCT	TERM
1	AC+	FF-B
2	AC-	C10-M
3	EQUIP GND	CO-31A
4	LINE FREQ REF	CO-31B
5	+12 VDC	CO-2B
6	+24 VDC	CO-1B
7	LOGIC GND	CO-32A

