

LED SIGNAL INDICATIONS

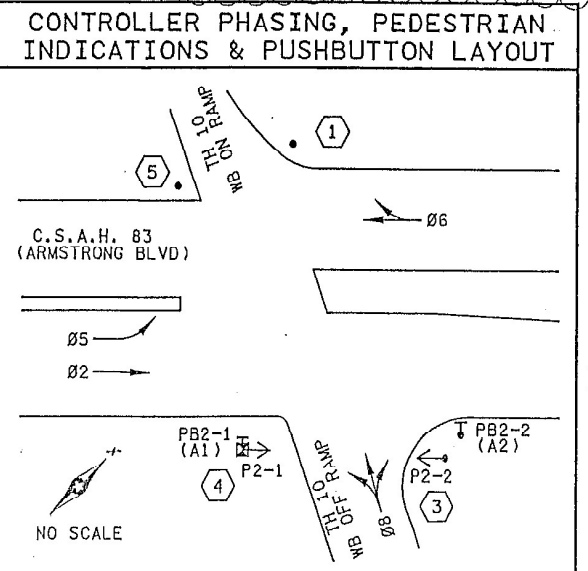
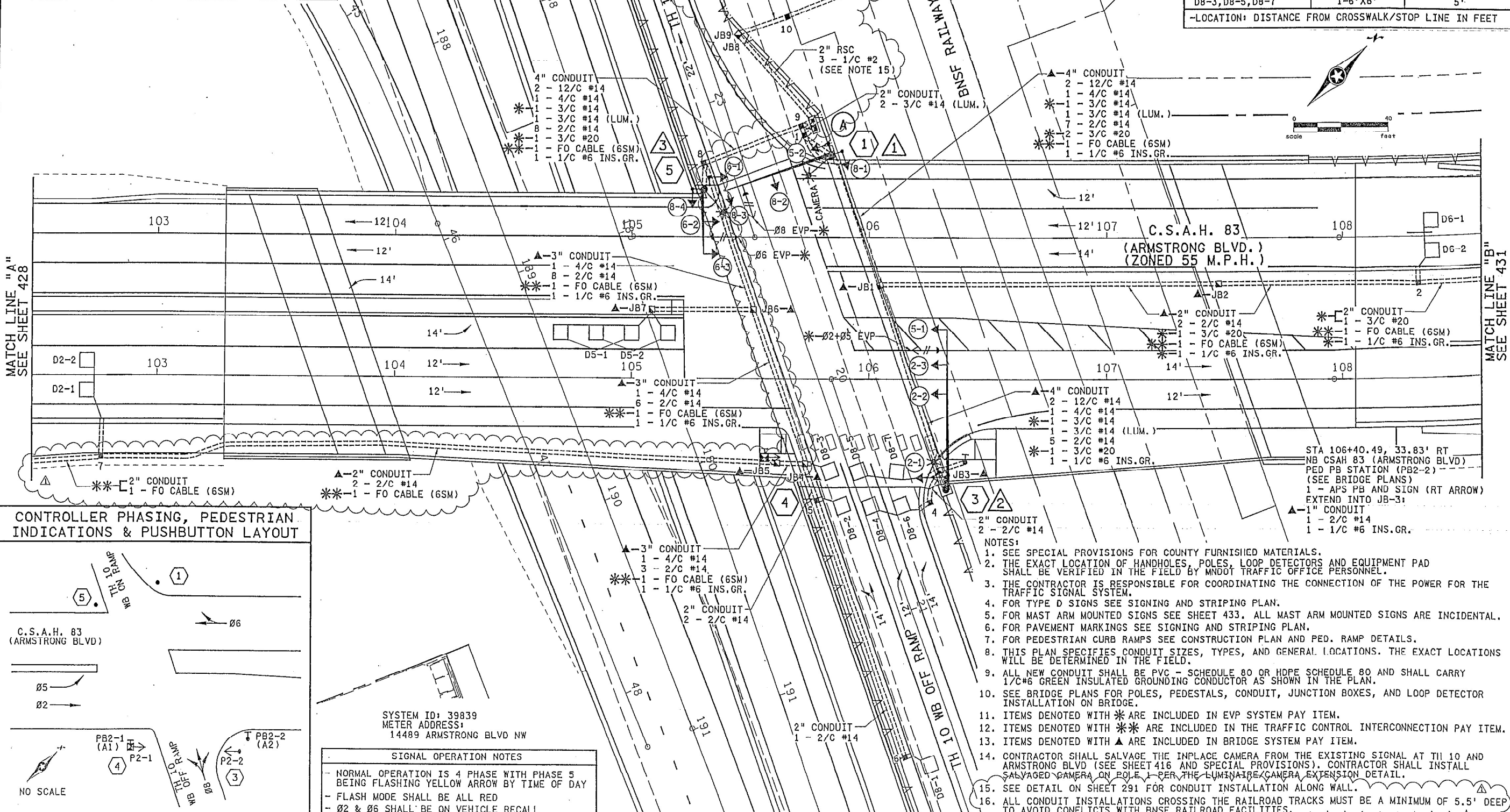
FACE	R	Y	G	RLA	YLA	FYA	GLA
2-1, 2-2, 2-3	●	●	●				
5-1, 5-2				←	←	←	←
6-1, 6-2, 6-3	●	●	●				
8-1, 8-2, 8-3, 8-4	●	●	●				

-ALL VEHICLE SIGNAL INDICATIONS SHALL BE 12"
 -EACH SIGNAL FACE SHALL HAVE A BACKGROUND SHIELD
 -FYA = FLASHING YELLOW ARROW

PVC LOOP DETECTOR CHART

DESIGNATION	NO. & SIZE/FT.	LOCATION
D2-1, D2-2	1-6'X6'	250'
D5-1	2-6'X6'	20', 50'
D5-2	2-6'X6'	5', 35'
D6-1, D6-2	1-6'X6'	250'
D8-1	1-6'X6'	120'
D8-2, D8-4, D8-6	1-6'X6'	20'
D8-3, D8-5, D8-7	1-6'X6'	5'

-LOCATION: DISTANCE FROM CROSSWALK/STOP LINE IN FEET



SYSTEM ID: 39839
 METER ADDRESS:
 14489 ARMSTRONG BLVD NW

SIGNAL OPERATION NOTES

- NORMAL OPERATION IS 4 PHASE WITH PHASE 5 BEING FLASHING YELLOW ARROW BY TIME OF DAY
- FLASH MODE SHALL BE ALL RED
- Ø2 & Ø6 SHALL BE ON VEHICLE RECALL

- NOTES:**
- SEE SPECIAL PROVISIONS FOR COUNTY FURNISHED MATERIALS.
 - THE EXACT LOCATION OF HANDHOLES, POLES, LOOP DETECTORS AND EQUIPMENT PAD SHALL BE VERIFIED IN THE FIELD BY MNDOT TRAFFIC OFFICE PERSONNEL.
 - THE CONTRACTOR IS RESPONSIBLE FOR COORDINATING THE CONNECTION OF THE POWER FOR THE TRAFFIC SIGNAL SYSTEM.
 - FOR TYPE D SIGNS SEE SIGNING AND STRIPING PLAN.
 - FOR MAST ARM MOUNTED SIGNS SEE SHEET 433. ALL MAST ARM MOUNTED SIGNS ARE INCIDENTAL.
 - FOR PAVEMENT MARKINGS SEE SIGNING AND STRIPING PLAN.
 - FOR PEDESTRIAN CURB RAMPS SEE CONSTRUCTION PLAN AND PED. RAMP DETAILS.
 - THIS PLAN SPECIFIES CONDUIT SIZES, TYPES, AND GENERAL LOCATIONS. THE EXACT LOCATIONS WILL BE DETERMINED IN THE FIELD.
 - ALL NEW CONDUIT SHALL BE PVC - SCHEDULE 80 OR HDPE SCHEDULE 80 AND SHALL CARRY 1/C#6 GREEN INSULATED GROUNDING CONDUCTOR AS SHOWN IN THE PLAN.
 - SEE BRIDGE PLANS FOR POLES, PEDESTALS, CONDUIT, JUNCTION BOXES, AND LOOP DETECTOR INSTALLATION ON BRIDGE.
 - ITEMS DENOTED WITH * ARE INCLUDED IN EVP SYSTEM PAY ITEM.
 - ITEMS DENOTED WITH ** ARE INCLUDED IN THE TRAFFIC CONTROL INTERCONNECTION PAY ITEM.
 - ITEMS DENOTED WITH ▲ ARE INCLUDED IN BRIDGE SYSTEM PAY ITEM.
 - CONTRACTOR SHALL SALVAGE THE INPLACE CAMERA FROM THE EXISTING SIGNAL AT TH 10 AND ARMSTRONG BLVD (SEE SHEET 416 AND SPECIAL PROVISIONS). CONTRACTOR SHALL INSTALL SALVAGED CAMERA ON POLE 1 PER THE LUMINAIRE/CAMERA EXTENSION DETAIL.
 - SEE DETAIL ON SHEET 291 FOR CONDUIT INSTALLATION ALONG WALL.
 - ALL CONDUIT INSTALLATIONS CROSSING THE RAILROAD TRACKS MUST BE A MINIMUM OF 5.5' DEEP TO AVOID CONFLICTS WITH BNSF RAILROAD FACILITIES.

NO	DATE	BY	CHKD	APPR	REVISION

I hereby certify that this plan, specification, or report was prepared by me or under my direct supervision and that I am a duly Licensed Professional Engineer under the laws of the State of Minnesota.

Print Name: **ADRIAN S. POTTER**

Adrian S. Potter

STATE PROJECT NO.
002-683-004
199-115-002

STATE PROJECT NO.
0202-95 (TH 10)

COUNTY PROJECT NO.
002 683-004

DRAWN BY
M. BRESSLER

DESIGNED BY
M. BRESSLER

CHECKED BY
A. POTTER



ENGINEERS
PLANNERS
DESIGNERS

ANOKA COUNTY
TRAFFIC SIGNAL PLANS
T.H. 10 / C.S.A.H. 83 INTERCHANGE
INTERSECTION LAYOUT (SYSTEM "A")

SHEET
429
OF
566

9:48 PM 3/20/15
 Projects\0255\CAD_BIM\PI\0255_P01.dwg

INTERSECTION NOTES:

1 STA 105+83.99, 91.33' LT
NB CSAH 83 (ARMSTRONG BLVD)
TYPE PA100-A-45-D35-9 (DAVIT AT 350 DEG)
(SEE BRIDGE PLANS FOR FOUNDATION DETAILS)
1 - ANGLE MOUNT SIGNAL OVERHEAD AT 0'
1 - STRAIGHT MOUNT SIGNAL OVERHEAD AT 19'
2 - ANGLE MOUNT SIGNALS AT 90 & 180 DEG
* ONE WAY EVP DETECTOR AND
CONFIRMATORY LIGHT (PHASE 8)
LUMINAIRE - LED (250 W HPS REPLACEMENT)
X6 - 350/CAM 400 EXTENSION
INSTALL - IP CAMERA (SEE NOTE 13)
TYPE D SIGNS - SEE MAST ARM SIGNING SHEETS
2 - R9-3 SIGNS FACING POLES 3 & 5
EXTEND INTO HH-1:
▲ - 3" CONDUIT
2 - 12/C #14
* - 1 - 3/C #14
1 - 3/C #14 (LUM.)
* - 1 - 3/C #20
1 - 3/C #14 (CAMERA POWER)
1 - CAT 6
1 - COAXIAL CABLE
1 - 1/C #6 INS.GR.

2 STA 110+50.43, 29.64' LT
NB CSAH 83 (ARMSTRONG BLVD)
PEDESTAL FOUNDATION
10' PEDESTAL POLE PLUS BASE
ONE WAY EVP DETECTOR (PHASE 6)
EXTEND INTO HH-3:
3" CONDUIT
1 - 3/C #20
1 - 1/C #6 INS.GR.

3 STA 106+32.46, 45.20' RT
NB CSAH 83 (ARMSTRONG BLVD)
TYPE BA-65-D30-9 (DAVIT AT 350 DEG)
(SEE BRIDGE PLANS FOR FOUNDATION DETAILS)
1 - ANGLE MOUNT SIGNAL OVERHEAD AT 0'
2 - STRAIGHT MOUNT SIGNALS OVERHEAD AT 13' & 25'
1 - ANGLE MOUNT SIGNAL AT 0 DEG
1 - ANGLE MOUNT C.D. PED IND AT 0 DEG
* ONE WAY EVP DETECTOR AND
CONFIRMATORY LIGHT (PHASES 2+5)
LUMINAIRE - LED (250 W HPS REPLACEMENT)
1 - R10-X12 SIGN ADJACENT TO
SIGNAL INDICATION 5-1
TYPE D SIGNS - SEE MAST ARM SIGNING SHEETS
1 - R9-3 SIGN FACING POLE 1
EXTEND INTO JB-3:
▲ - 3" CONDUIT
2 - 12/C #14
1 - 4/C #14
* - 1 - 3/C #14
1 - 3/C #14 (LUM.)
* - 1 - 3/C #20
1 - 1/C #6 INS.GR.

4 STA 105+55.98, 31.64' RT
NB CSAH 83 (ARMSTRONG BLVD)
10' PEDESTAL POLE PLUS BASE
PEDESTAL FOUNDATION (SEE BRIDGE PLANS)
1 - STRAIGHT MOUNT C.D. PED IND AT 0 DEG
1 - APS PB AND SIGN (LT ARROW) (PB2-1)
1 - R9-3 SIGN FACING POLE 5
EXTEND INTO JB-5:
▲ - 2" CONDUIT
1 - 4/C #14
1 - 2/C #14
1 - 1/C #6 INS.GR.

5 STA 105+29.90, 77.50' LT
SB CSAH 83 (ARMSTRONG BLVD)
TYPE PA85-A-25-D30-9 (DAVIT AT 350 DEG)
(SEE BRIDGE PLANS FOR FOUNDATION DETAILS)
1 - ANGLE MOUNT SIGNAL OVERHEAD AT 0'
1 - STRAIGHT MOUNT SIGNAL OVERHEAD AT 12'
2 - ANGLE MOUNT SIGNALS AT 90 & 180 DEG
* ONE WAY EVP DETECTOR AND
CONFIRMATORY LIGHT (PHASE 6)
LUMINAIRE - LED (250 W HPS REPLACEMENT)
TYPE D SIGNS - SEE MAST ARM SIGNING SHEETS
2 - R9-3 SIGNS FACING POLE 1 & PEDESTAL 4
EXTEND INTO HH-8:
3" CONDUIT
2 - 12/C #14
* - 1 - 3/C #14
1 - 3/C #14 (LUM.)
* - 1 - 3/C #20
1 - 1/C #6 INS.GR.

A STA 105+76.41, 104+06' LT
NB CSAH 83 (ARMSTRONG BLVD NW)
EQUIPMENT PAD - SEE DETAIL
SERVICE CABINET
INSTALL - CONTROLLER AND CABINET (COUNTY FURNISHED)
2 - 4" CONDUIT TO HH-1:
4 - 12/C #14
1 - 4/C #14
* - 2 - 3/C #14
7 - 2/C #14
* - 3 - 3/C #20
* - 1 - FO CABLE (6SM)
1 - 3/C #14 (CAMERA POWER)
1 - CAT 6
1 - COAXIAL CABLE
1 - 1/C #6 INS. GR.
2 - 4" CONDUIT TO HH-9:
2 - 12/C #14
1 - 4/C #14
* - 1 - 3/C #14
8 - 2/C #14
* - 1 - 3/C #20
* - 1 - FO CABLE (6SM)
1 - 1/C #6 INS. GR.
2 - 3" CONDUIT STUBBED OUT CAPPED BOTH ENDS
2" CONDUIT STUBBED OUT CAPPED BOTH ENDS
1" CONDUIT STUBBED OUT CAPPED BOTH ENDS
2" CONDUIT TO SERVICE CABINET
2 - 1/C #6
1 - 1/C #6 INS. GR.
2" CONDUIT TO HH-9:
3 - 3/C #14 (LUM.)
SERVICE CABINET TO HH-9:
2" CONDUIT
3 - 1/C #2

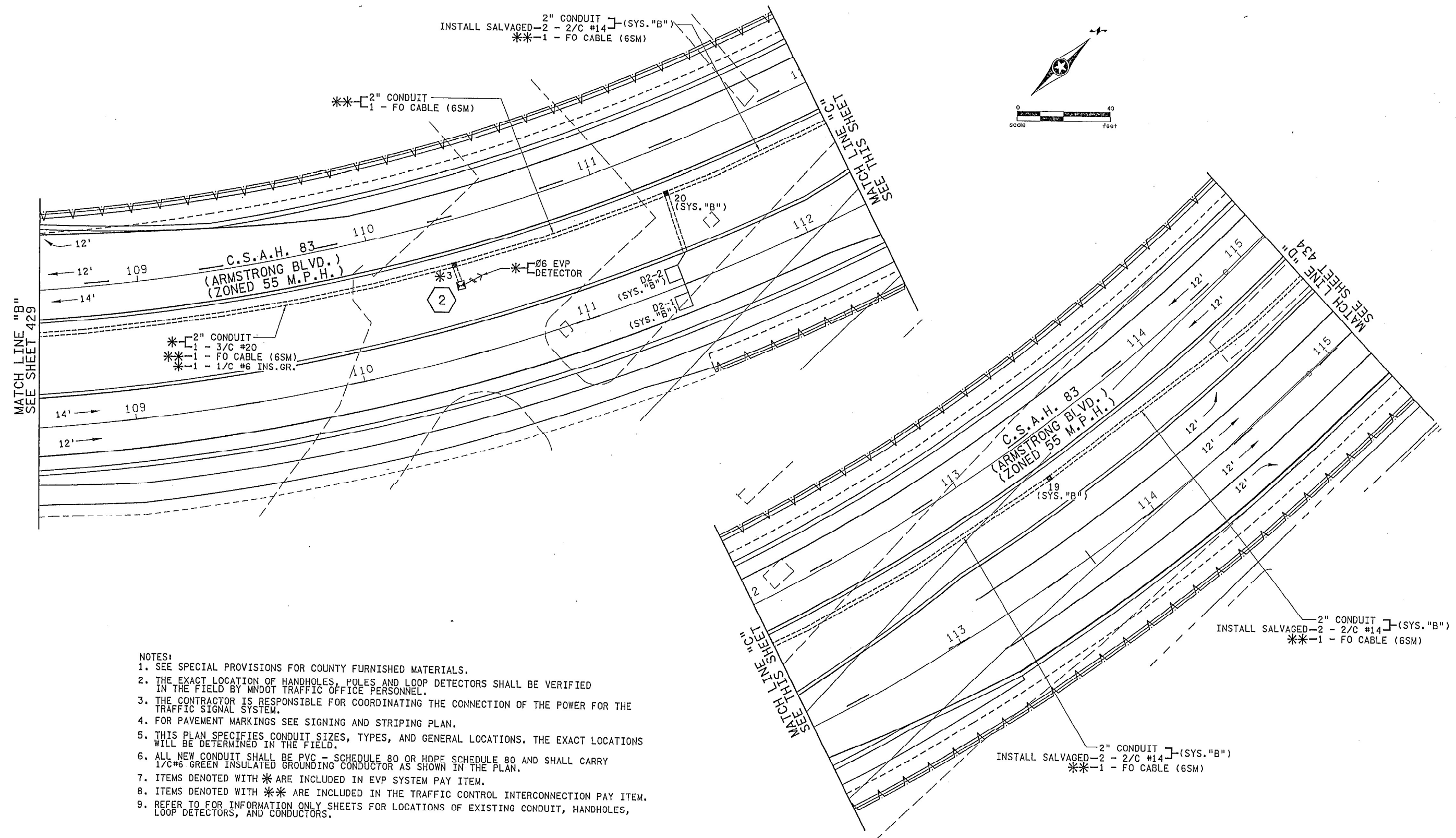
B STA 88+80.61, 57.34' RT
NB CSAH 83 (ARMSTRONG BLVD NW)
SOP - GROUND MOUNTED
TRANSFORMER
EXTEND INTO HH-13:
2" CONDUIT
3 - 1/C #2
EXTEND INTO HH-13:
2" CONDUIT

- NOTES:
- SEE SPECIAL PROVISIONS FOR COUNTY FURNISHED MATERIALS.
 - THE EXACT LOCATION OF HANDHOLES, POLES, LOOP DETECTORS AND EQUIPMENT PAD SHALL BE VERIFIED IN THE FIELD BY MNDOT TRAFFIC OFFICE PERSONNEL.
 - THE CONTRACTOR IS RESPONSIBLE FOR COORDINATING THE CONNECTION OF THE POWER FOR THE TRAFFIC SIGNAL SYSTEM.
 - FOR TYPE D SIGNS SEE SIGNING AND STRIPING PLAN.
 - FOR MAST ARM MOUNTED SIGNS SEE SHEET .
 - FOR PAVEMENT MARKINGS SEE SIGNING AND STRIPING PLAN. MAST ARM MOUNTED SIGNS ARE INCIDENTAL.
 - FOR PEDESTRIAN CURB RAMPS SEE CONSTRUCTION PLAN AND PED. RAMP DETAILS.
 - THIS PLAN SPECIFIES CONDUIT SIZES, TYPES, AND GENERAL LOCATIONS. THE EXACT LOCATIONS WILL BE DETERMINED IN THE FIELD.
 - ALL NEW CONDUIT SHALL BE PVC - SCHEDULE 80 OR HDPE SCHEDULE 80 AND SHALL CARRY 1/C#6 GREEN INSULATED GROUNDING CONDUCTOR AS SHOWN IN THE PLAN.
 - SEE BRIDGE PLANS FOR POLES, PEDESTALS, CONDUIT, JUNCTION BOXES, AND LOOP DETECTOR INSTALLATION ON BRIDGE.
 - ITEMS DENOTED WITH * ARE INCLUDED IN EVP SYSTEM PAY ITEM.
 - ITEMS DENOTED WITH ** ARE INCLUDED IN THE TRAFFIC CONTROL INTERCONNECTION PAY ITEM.
 - ITEMS DENOTED WITH ▲ ARE INCLUDED IN BRIDGE SYSTEM PAY ITEM.
 - CONTRACTOR SHALL SALVAGE THE INPLACE CAMERA FROM THE EXISTING SIGNAL AT TH 10 AND ARMSTRONG BLVD (SEE SHEET 416 AND SPECIAL PROVISIONS). CONTRACTOR SHALL INSTALL SALVAGED CAMERA ON POLE 1 PER THE LUMINAIRE/CAMERA EXTENSION DETAIL.

SYSTEM ID: 39839
METER ADDRESS:
14489 ARMSTRONG BLVD NW

11:45:45 PM
12/25/2014
...\\CAD_BIM\PIan\8259_m\01.dgn

I hereby certify that this plan, specification, or report was prepared by me or under my direct supervision and that I am a duly Licensed Professional Engineer under the laws of the State of Minnesota. Print Name: ADRIAN S. POTTER <i>Adrian S. Potter</i> Date: 9-12-14 License # 42785					STATE PROJECT NO. 002-683-004 199-115-002 STATE PROJECT NO. 0202-95 (TH 10) COUNTY PROJECT NO. 002-683-004 CITY PROJECT NO. 14-22	DRAWN BY M. BRESSLER DESIGNED BY M. BRESSLER CHECKED BY A. POTTER COMM. NO. 0138259	SRH ENGINEERS PLANNERS DESIGNERS Consulting Group, Inc.	ANOKA COUNTY TRAFFIC SIGNAL PLANS T.H. 10 / C.S.A.H. 83 INTERCHANGE MATCH LINE LAYOUT/INTERSECTION NOTES (SYSTEM "A") C.S.A.H. 83 (ARMSTRONG BLVD) AT WB T.H. 10 RAMPS	SHEET 430 OF 586								
<table border="1"> <thead> <tr> <th>NO</th> <th>DATE</th> <th>BY</th> <th>CHKD</th> <th>APP'D</th> <th>REVISION</th> </tr> </thead> <tbody> <tr> <td> </td> <td> </td> <td> </td> <td> </td> <td> </td> <td> </td> </tr> </tbody> </table>	NO	DATE	BY	CHKD	APP'D	REVISION							...\\CAD_BIM\PIan\8259_m\01.dgn				
NO	DATE	BY	CHKD	APP'D	REVISION												



- NOTES:
1. SEE SPECIAL PROVISIONS FOR COUNTY FURNISHED MATERIALS.
 2. THE EXACT LOCATION OF HANDHOLES, POLES AND LOOP DETECTORS SHALL BE VERIFIED IN THE FIELD BY MNDOT TRAFFIC OFFICE PERSONNEL.
 3. THE CONTRACTOR IS RESPONSIBLE FOR COORDINATING THE CONNECTION OF THE POWER FOR THE TRAFFIC SIGNAL SYSTEM.
 4. FOR PAVEMENT MARKINGS SEE SIGNING AND STRIPING PLAN.
 5. THIS PLAN SPECIFIES CONDUIT SIZES, TYPES, AND GENERAL LOCATIONS. THE EXACT LOCATIONS WILL BE DETERMINED IN THE FIELD.
 6. ALL NEW CONDUIT SHALL BE PVC - SCHEDULE 80 OR HDPE SCHEDULE 80 AND SHALL CARRY 1/C#6 GREEN INSULATED GROUNDING CONDUCTOR AS SHOWN IN THE PLAN.
 7. ITEMS DENOTED WITH * ARE INCLUDED IN EVP SYSTEM PAY ITEM.
 8. ITEMS DENOTED WITH ** ARE INCLUDED IN THE TRAFFIC CONTROL INTERCONNECTION PAY ITEM.
 9. REFER TO FOR INFORMATION ONLY SHEETS FOR LOCATIONS OF EXISTING CONDUIT, HANDHOLES, LOOP DETECTORS, AND CONDUCTORS.

4:45:16 PM
 H:\2012\01\SUBS\CAD_BIM\Plan\8259.m102.dgn

NO	DATE	BY	CHKD	APPR	REVISION

I hereby certify that this plan, specification, or report was prepared by me or under my direct supervision and that I am a duly Licensed Professional Engineer under the laws of the State of Minnesota.

Print Name: **ADRIAN S. POTTER**

Adrian S. Potter

Date: 9-12-14 License #: 42785

STATE PROJECT NO.
002-683-004
199-115-002

STATE PROJECT NO.
0202-95 (TH 10)

COUNTY PROJECT NO.
002-683-004

CITY PROJECT NO. 14-22

DRAWN BY
M. BRESSLER

DESIGNED BY
M. BRESSLER

CHECKED BY
A. POTTER

COMM. NO. 0138259



ENGINEERS
PLANNERS
DESIGNERS

ANOKA COUNTY

TRAFFIC SIGNAL PLANS

T.H. 10 / C.S.A.H. 83 INTERCHANGE

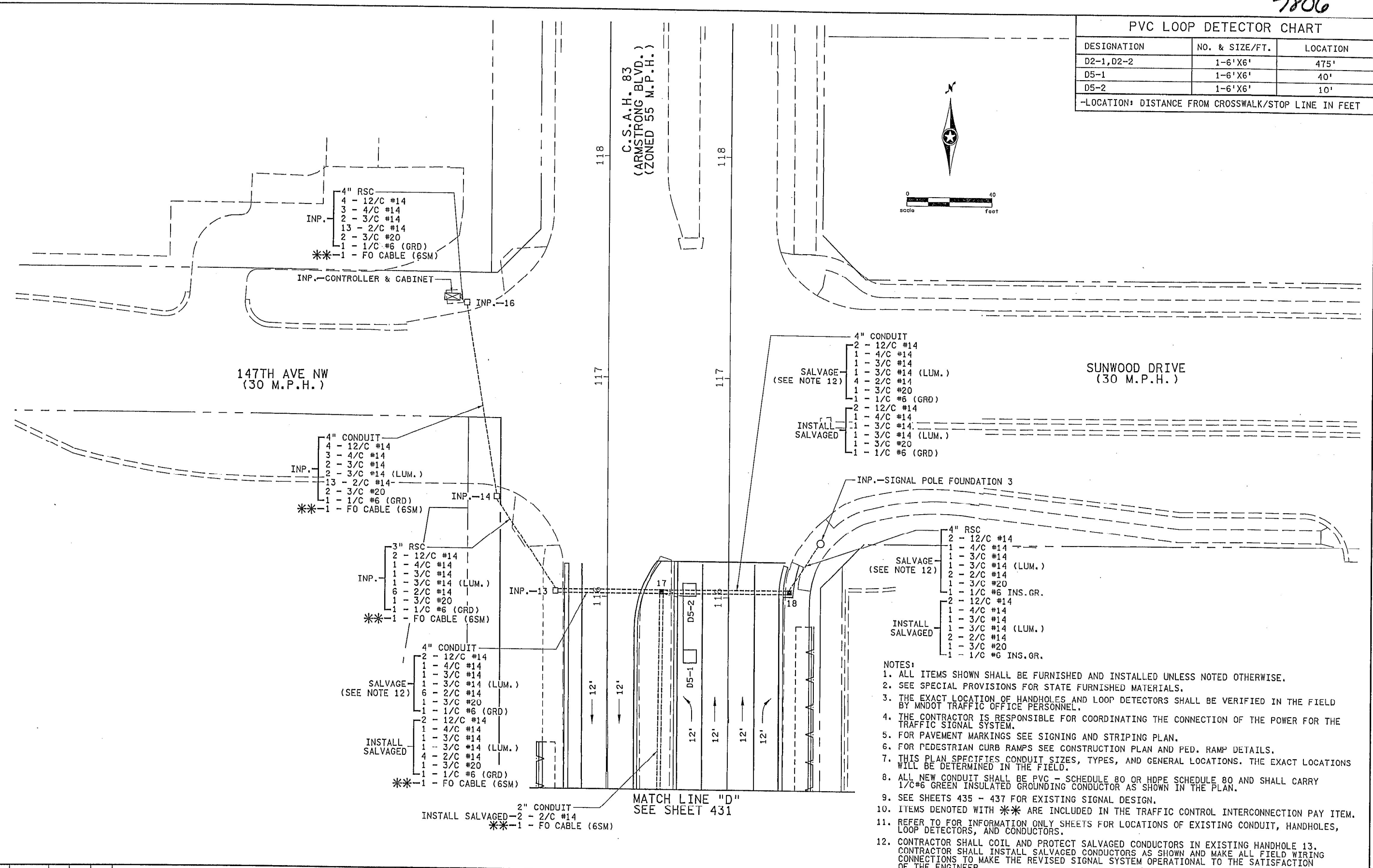
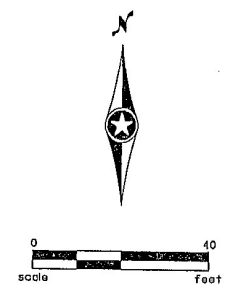
MATCH LINE LAYOUT (SYSTEM "A" & SYSTEM "B")

SHEET
431
OF
586

7806

PVC LOOP DETECTOR CHART		
DESIGNATION	NO. & SIZE/FT.	LOCATION
D2-1, D2-2	1-6'X6'	475'
D5-1	1-6'X6'	40'
D5-2	1-6'X6'	10'

-LOCATION: DISTANCE FROM CROSSWALK/STOP LINE IN FEET



- NOTES:
1. ALL ITEMS SHOWN SHALL BE FURNISHED AND INSTALLED UNLESS NOTED OTHERWISE.
 2. SEE SPECIAL PROVISIONS FOR STATE FURNISHED MATERIALS.
 3. THE EXACT LOCATION OF HANDHOLES AND LOOP DETECTORS SHALL BE VERIFIED IN THE FIELD BY MNDOT TRAFFIC OFFICE PERSONNEL.
 4. THE CONTRACTOR IS RESPONSIBLE FOR COORDINATING THE CONNECTION OF THE POWER FOR THE TRAFFIC SIGNAL SYSTEM.
 5. FOR PAVEMENT MARKINGS SEE SIGNING AND STRIPING PLAN.
 6. FOR PEDESTRIAN CURB RAMPS SEE CONSTRUCTION PLAN AND PED. RAMP DETAILS.
 7. THIS PLAN SPECIFIES CONDUIT SIZES, TYPES, AND GENERAL LOCATIONS. THE EXACT LOCATIONS WILL BE DETERMINED IN THE FIELD.
 8. ALL NEW CONDUIT SHALL BE PVC - SCHEDULE 80 OR HDPE SCHEDULE 80 AND SHALL CARRY 1/C#6 GREEN INSULATED GROUNDING CONDUCTOR AS SHOWN IN THE PLAN.
 9. SEE SHEETS 435 - 437 FOR EXISTING SIGNAL DESIGN.
 10. ITEMS DENOTED WITH ** ARE INCLUDED IN THE TRAFFIC CONTROL INTERCONNECTION PAY ITEM.
 11. REFER TO FOR INFORMATION ONLY SHEETS FOR LOCATIONS OF EXISTING CONDUIT, HANDHOLES, LOOP DETECTORS, AND CONDUCTORS.
 12. CONTRACTOR SHALL COIL AND PROTECT SALVAGED CONDUCTORS IN EXISTING HANDHOLE 13. CONTRACTOR SHALL INSTALL SALVAGED CONDUCTORS AS SHOWN AND MAKE ALL FIELD WIRING CONNECTIONS TO MAKE THE REVISED SIGNAL SYSTEM OPERATIONAL TO THE SATISFACTION OF THE ENGINEER.

12/22/2014 12:45:45 PM ... \CAD_BITMAP\an\8259_m103.dgn

NO	DATE	BY	CHKD	APPR	REVISION

I hereby certify that this plan, specification, or report was prepared by me or under my direct supervision and that I am a duly Licensed Professional Engineer under the laws of the State of Minnesota.

Print Name: **ADRIAN S. POTTER**

Adrian S. Potter

Date: **9-12-14** License #: **42785**

STATE PROJECT NO. 002-683-004
199-115-002

STATE PROJECT NO. 0202-95 (TH 10)

COUNTY PROJECT NO. 002-683-004

CITY PROJECT NO. 14-22

DRAWN BY M. BRESSLER
DESIGNED BY M. BRESSLER
CHECKED BY A. POTTER
COMM. NO. 0138259



ENGINEERS
PLANNERS
DESIGNERS

ANOKA COUNTY
TRAFFIC SIGNAL PLANS
T.H. 10 / C.S.A.H. 83 INTERCHANGE
REVISED INTERSECTION LAYOUT (REVISED SYSTEM "B")
C.S.A.H. 83 (ARMSTRONG BLVD) AT SUNWOOD DR.

SHEET
434
OF
586

INTERSECTION NOTES:

- 1 STA 105+83.99, 91.33' LT NB CSAH 83 (ARMSTRONG BLVD) TYPE PA100-A-45-D35-9 (DAVIT AT 350 DEG) (SEE BRIDGE PLANS FOR FOUNDATION DETAILS)
 - 1 - ANGLE MOUNT SIGNAL OVERHEAD AT 0'
 - 1 - STRAIGHT MOUNT SIGNAL OVERHEAD AT 19'
 - 2 - ANGLE MOUNT SIGNALS AT 90 & 180 DEG
- * ONE WAY EVP DETECTOR AND CONFIRMATORY LIGHT (PHASE 8) LUMINAIRE - LED (250 W HPS REPLACEMENT) X6 - 350/CAM 400 EXTENSION
- INSTALL - IP CAMERA (SEE NOTE 13) TYPE D SIGNS - SEE MAST ARM SIGNING SHEETS 2 - R9-3 SIGNS FACING POLES 3 & 5 EXTEND INTO HH-1:
- ▲ 3" CONDUIT
 - 2 - 12/C #14
 - * 1 - 3/C #14
 - 1 - 3/C #14 (LUM.)
 - * 1 - 3/C #20
 - 1 - 3/C #14 (CAMERA POWER)
 - 1 - CAT 6
 - 1 - COAXIAL CABLE
 - 1 - 1/C #6 INS.GR.

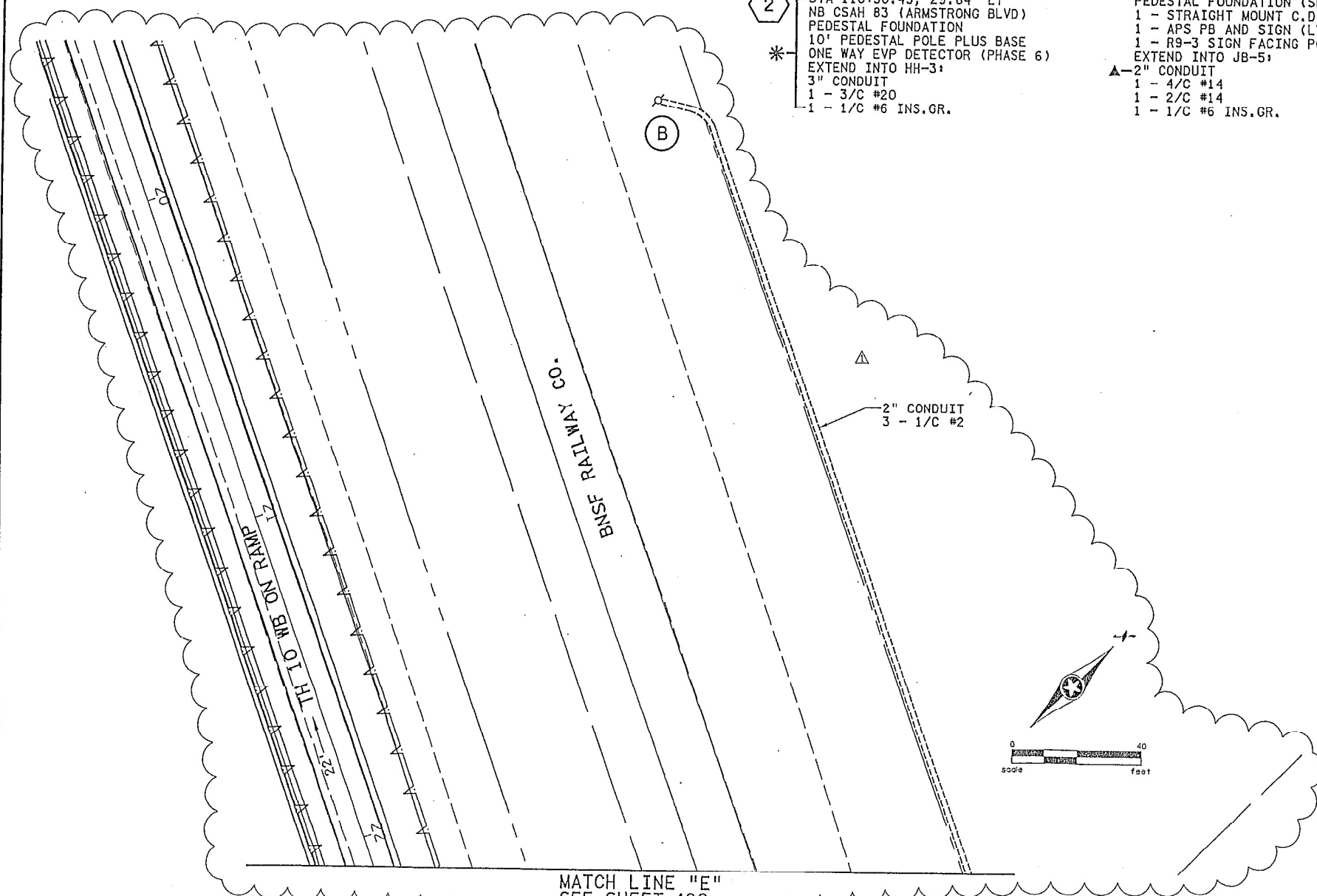
- 3 STA 106+32.46, 45.20' RT NB CSAH 83 (ARMSTRONG BLVD) TYPE BA-65-D30-9 (DAVIT AT 350 DEG) (SEE BRIDGE PLANS FOR FOUNDATION DETAILS)
 - 1 - ANGLE MOUNT SIGNAL OVERHEAD AT 0'
 - 2 - STRAIGHT MOUNT SIGNALS OVERHEAD AT 13' & 25'
- 2 1 - ANGLE MOUNT SIGNAL AT 0 DEG 1 - ANGLE MOUNT C.D. PED IND AT 0 DEG
- * ONE WAY EVP DETECTOR AND CONFIRMATORY LIGHT (PHASES 2+5) LUMINAIRE - LED (250 W HPS REPLACEMENT) 1 - R10-X12 SIGN ADJACENT TO SIGNAL INDICATION 5-1
- TYPE D SIGNS - SEE MAST ARM SIGNING SHEETS 1 - R9-3 SIGN FACING POLE 1 EXTEND INTO JB-3:
- ▲ 3" CONDUIT
 - 2 - 12/C #14
 - 1 - 4/C #14
 - * 1 - 3/C #14
 - 1 - 3/C #14 (LUM.)
 - * 1 - 3/C #20
 - 1 - 1/C #6 INS.GR.

- 5 STA 105+29.90, 77.50' LT SB CSAH 83 (ARMSTRONG BLVD) TYPE PA85-A-25-D30-9 (DAVIT AT 350 DEG) (SEE BRIDGE PLANS FOR FOUNDATION DETAILS)
 - 1 - ANGLE MOUNT SIGNAL OVERHEAD AT 0'
 - 1 - STRAIGHT MOUNT SIGNAL OVERHEAD AT 12'
 - 2 - ANGLE MOUNT SIGNALS AT 90 & 180 DEG
- 3 1 - ANGLE MOUNT SIGNAL AT 0 DEG 1 - ANGLE MOUNT C.D. PED IND AT 0 DEG
- * ONE WAY EVP DETECTOR AND CONFIRMATORY LIGHT (PHASE 6) LUMINAIRE - LED (250 W HPS REPLACEMENT) TYPE D SIGNS - SEE MAST ARM SIGNING SHEETS 2 - R9-3 SIGNS FACING POLE 1 & PEDESTAL 4 EXTEND INTO HH-8:
- 3" CONDUIT
 - 2 - 12/C #14
 - * 1 - 3/C #14
 - 1 - 3/C #14 (LUM.)
 - * 1 - 3/C #20
 - 1 - 1/C #6 INS.GR.

- A STA 105+76.41, 104+06' LT NB CSAH 83 (ARMSTRONG BLVD NW) EQUIPMENT PAD - SEE DETAIL SERVICE CABINET
- INSTALL - CONTROLLER AND CABINET (COUNTY FURNISHED)
 - 2 - 4" CONDUIT TO HH-1:
 - 4 - 12/C #14
 - 1 - 4/C #14
 - * 2 - 3/C #14
 - 7 - 2/C #14
 - * 3 - 3/C #20
 - ** 1 - FO CABLE (6SM)
 - 1 - 3/C #14 (CAMERA POWER)
 - 1 - CAT 6
 - 1 - COAXIAL CABLE
 - 1 - 1/C #6 INS. GR.
 - 2 - 4" CONDUIT TO HH-9:
 - 2 - 12/C #14
 - 1 - 4/C #14
 - * 1 - 3/C #14
 - 8 - 2/C #14
 - * 1 - 3/C #20
 - ** 1 - FO CABLE (6SM)
 - 1 - 1/C #6 INS. GR.
 - 2 - 3" CONDUIT STUBBED OUT CAPPED BOTH ENDS
 - 2" CONDUIT STUBBED OUT CAPPED BOTH ENDS
 - 1" CONDUIT STUBBED OUT CAPPED BOTH ENDS
 - 2" CONDUIT TO SERVICE CABINET
 - 2 - 1/C #6
 - 1 - 1/C #6 INS. GR.
 - 2" CONDUIT TO HH-9:
 - 3 - 3/C #14 (LUM.)
 - SERVICE CABINET TO JB-8:
 - 2" RSC
 - 3 - 1/C #2
 - (SEE NOTE 15)

- 4 STA 105+55.98, 31.64' RT NB CSAH 83 (ARMSTRONG BLVD) 10' PEDESTAL POLE PLUS BASE PEDESTAL FOUNDATION (SEE BRIDGE PLANS)
 - 1 - STRAIGHT MOUNT C.D. PED IND AT 0 DEG
 - 1 - APS PB AND SIGN (LT ARROW) (PB2-1)
 - 1 - R9-3 SIGN FACING POLE 5
- EXTEND INTO JB-5:
- ▲ 2" CONDUIT
 - 1 - 4/C #14
 - 1 - 2/C #14
 - 1 - 1/C #6 INS.GR.

- 2 STA 110+50.43, 29.64' LT NB CSAH 83 (ARMSTRONG BLVD) PEDESTAL FOUNDATION 10' PEDESTAL POLE PLUS BASE
- * ONE WAY EVP DETECTOR (PHASE 6) EXTEND INTO HH-3:
- 3" CONDUIT
 - 1 - 3/C #20
 - 1 - 1/C #6 INS.GR.



SYSTEM ID: 39839
 METER ADDRESS:
 14489 ARMSTRONG BLVD NW

- NOTES:
- SEE SPECIAL PROVISIONS FOR COUNTY FURNISHED MATERIALS.
 - THE EXACT LOCATION OF HANDHOLES, POLES, LOOP DETECTORS AND EQUIPMENT PAD SHALL BE VERIFIED IN THE FIELD BY MNDOT TRAFFIC OFFICE PERSONNEL.
 - THE CONTRACTOR IS RESPONSIBLE FOR COORDINATING THE CONNECTION OF THE POWER FOR THE TRAFFIC SIGNAL SYSTEM.
 - FOR TYPE D SIGNS SEE SIGNING AND STRIPING PLAN.
 - FOR MAST ARM MOUNTED SIGNS SEE SHEET 433. ALL MAST ARM MOUNTED SIGNS ARE INCIDENTAL.
 - FOR PAVEMENT MARKINGS SEE SIGNING AND STRIPING PLAN.
 - FOR PEDESTRIAN CURB RAMPS SEE CONSTRUCTION PLAN AND PED. RAMP DETAILS.
 - THIS PLAN SPECIFIES CONDUIT SIZES, TYPES, AND GENERAL LOCATIONS. THE EXACT LOCATIONS WILL BE DETERMINED IN THE FIELD.
 - ALL NEW CONDUIT SHALL BE PVC - SCHEDULE 80 OR HDPE SCHEDULE 80 AND SHALL CARRY 1/C#6 GREEN INSULATED GROUNDING CONDUCTOR AS SHOWN IN THE PLAN.
 - SEE BRIDGE PLANS FOR POLES, PEDESTALS, CONDUIT, JUNCTION BOXES, AND LOOP DETECTOR INSTALLATION ON BRIDGE.
 - ITEMS DENOTED WITH * ARE INCLUDED IN EVP SYSTEM PAY ITEM.
 - ITEMS DENOTED WITH ** ARE INCLUDED IN THE TRAFFIC CONTROL INTERCONNECTION PAY ITEM.
 - ITEMS DENOTED WITH ▲ ARE INCLUDED IN BRIDGE SYSTEM PAY ITEM.
 - CONTRACTOR SHALL SALVAGE THE INPLACE CAMERA FROM THE EXISTING SIGNAL AT TH 10 AND ARMSTRONG BLVD (SEE SHEET 416 AND SPECIAL PROVISIONS). CONTRACTOR SHALL INSTALL SALVAGED CAMERA ON POLE 1 PER THE LUMINAIRE/CAMERA EXTENSION DETAIL.
 - SEE DETAIL ON SHEET 291 FOR CONDUIT INSTALLATION ALONG WALL.
 - ALL CONDUIT INSTALLATIONS CROSSING THE RAILROAD TRACKS MUST BE A MINIMUM OF 5.5' DEEP TO AVOID CONFLICTS WITH BNSF RAILROAD FACILITIES.

1:09:49 PM 3/15/2015 ... \CAD_BIM\Plan\8259_m101.dgn

NO	DATE	BY	CHKD	APPR	REVISION
1	9-15-15	MAB	ASP	ASP	SOURCE OF POWER REVISION

I hereby certify that this plan, specification, or report was prepared by me or under my direct supervision and that I am a duly Licensed Professional Engineer under the laws of the State of Minnesota.

Print Name: **ADRIAN S. POTTER**
Adrian S. Potter
 Date: 9-15-15 License #: 42785

STATE PROJECT NO. 002-683-004 199-115-002
 STATE PROJECT NO. 0202-95 (TH 10)
 COUNTY PROJECT NO. 002-683-004
 CITY PROJECT NO. 14-22

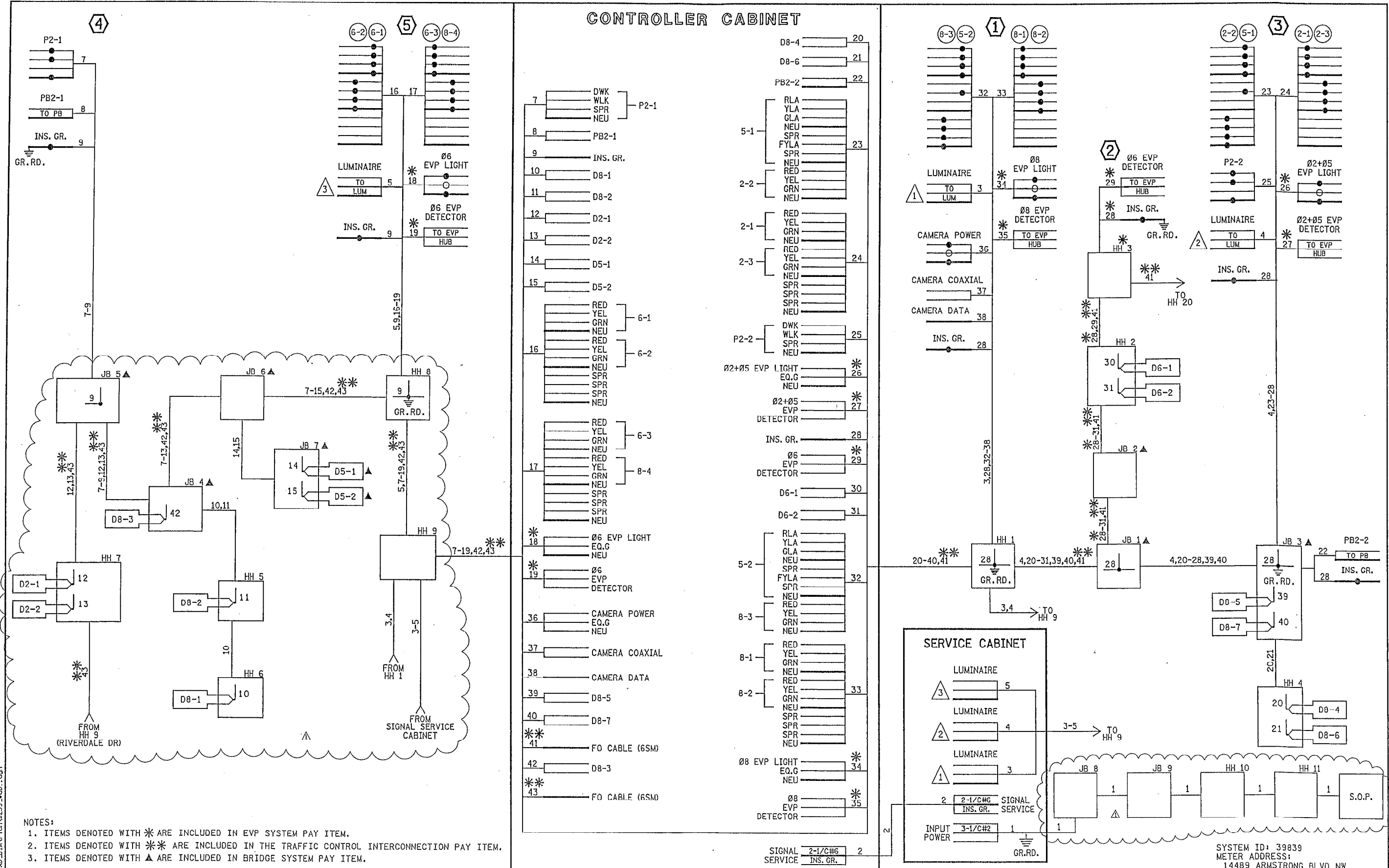
DRAWN BY M. BRESSLER
 DESIGNED BY M. BRESSLER
 CHECKED BY A. POTTER
 COMM. NO. 0138259



ENGINEERS
 PLANNERS
 DESIGNERS

ANOKA COUNTY
 TRAFFIC SIGNAL PLANS
 T.H. 10 / C.S.A.H. 83 INTERCHANGE
 MATCH LINE LAYOUT/INTERSECTION NOTES (SYSTEM "A")
 C.S.A.H. 83 (ARMSTRONG BLVD) AT WA T.H. 10 RAMPS

SHEET 430 OF 586



CONTROLLER CABINET

- 7 DWK } P2-1
- 8 WLK }
- 9 SPR }
- 10 NEU }
- 11 PB2-1
- 12 INS. GR.
- 13 D8-1
- 14 D8-2
- 15 D2-1
- 16 D2-2
- 17 D5-1
- 18 D5-2
- 19 RED } 6-1
- 20 YEL }
- 21 GRN }
- 22 NEU }
- 23 RED } 6-2
- 24 YEL }
- 25 GRN }
- 26 NEU }
- 27 RED } 6-3
- 28 YEL }
- 29 GRN }
- 30 NEU }
- 31 RED } 8-4
- 32 YEL }
- 33 GRN }
- 34 NEU }
- 35 SPR }
- 36 SPR }
- 37 SPR }
- 38 NEU }
- 39 Ø2+Ø5 EVP LIGHT EQ.G NEU
- 40 Ø2+Ø5 EVP DETECTOR
- 41 INS. GR.
- 42 Ø6 EVP LIGHT EQ.G NEU
- 43 Ø6 EVP DETECTOR
- 44 Ø6 EVP LIGHT EQ.G NEU
- 45 Ø6 EVP DETECTOR
- 46 Ø8 EVP LIGHT EQ.G NEU
- 47 Ø8 EVP DETECTOR
- 48 Ø8 EVP LIGHT EQ.G NEU
- 49 Ø8 EVP DETECTOR
- 50 Ø2+Ø5 EVP LIGHT EQ.G NEU
- 51 Ø2+Ø5 EVP DETECTOR
- 52 Ø2+Ø5 EVP DETECTOR
- 53 Ø6 EVP LIGHT EQ.G NEU
- 54 Ø6 EVP DETECTOR
- 55 Ø8 EVP LIGHT EQ.G NEU
- 56 Ø8 EVP DETECTOR
- 57 Ø2+Ø5 EVP LIGHT EQ.G NEU
- 58 Ø2+Ø5 EVP DETECTOR
- 59 Ø2+Ø5 EVP DETECTOR
- 60 Ø6 EVP LIGHT EQ.G NEU
- 61 Ø6 EVP DETECTOR
- 62 Ø8 EVP LIGHT EQ.G NEU
- 63 Ø8 EVP DETECTOR
- 64 Ø2+Ø5 EVP LIGHT EQ.G NEU
- 65 Ø2+Ø5 EVP DETECTOR
- 66 Ø2+Ø5 EVP DETECTOR
- 67 Ø6 EVP LIGHT EQ.G NEU
- 68 Ø6 EVP DETECTOR
- 69 Ø8 EVP LIGHT EQ.G NEU
- 70 Ø8 EVP DETECTOR
- 71 Ø2+Ø5 EVP LIGHT EQ.G NEU
- 72 Ø2+Ø5 EVP DETECTOR
- 73 Ø2+Ø5 EVP DETECTOR
- 74 Ø6 EVP LIGHT EQ.G NEU
- 75 Ø6 EVP DETECTOR
- 76 Ø8 EVP LIGHT EQ.G NEU
- 77 Ø8 EVP DETECTOR
- 78 Ø2+Ø5 EVP LIGHT EQ.G NEU
- 79 Ø2+Ø5 EVP DETECTOR
- 80 Ø2+Ø5 EVP DETECTOR
- 81 Ø6 EVP LIGHT EQ.G NEU
- 82 Ø6 EVP DETECTOR
- 83 Ø8 EVP LIGHT EQ.G NEU
- 84 Ø8 EVP DETECTOR
- 85 Ø2+Ø5 EVP LIGHT EQ.G NEU
- 86 Ø2+Ø5 EVP DETECTOR
- 87 Ø2+Ø5 EVP DETECTOR
- 88 Ø6 EVP LIGHT EQ.G NEU
- 89 Ø6 EVP DETECTOR
- 90 Ø8 EVP LIGHT EQ.G NEU
- 91 Ø8 EVP DETECTOR
- 92 Ø2+Ø5 EVP LIGHT EQ.G NEU
- 93 Ø2+Ø5 EVP DETECTOR
- 94 Ø2+Ø5 EVP DETECTOR
- 95 Ø6 EVP LIGHT EQ.G NEU
- 96 Ø6 EVP DETECTOR
- 97 Ø8 EVP LIGHT EQ.G NEU
- 98 Ø8 EVP DETECTOR
- 99 Ø2+Ø5 EVP LIGHT EQ.G NEU
- 100 Ø2+Ø5 EVP DETECTOR
- 101 Ø2+Ø5 EVP DETECTOR
- 102 Ø6 EVP LIGHT EQ.G NEU
- 103 Ø6 EVP DETECTOR
- 104 Ø8 EVP LIGHT EQ.G NEU
- 105 Ø8 EVP DETECTOR
- 106 Ø2+Ø5 EVP LIGHT EQ.G NEU
- 107 Ø2+Ø5 EVP DETECTOR
- 108 Ø2+Ø5 EVP DETECTOR
- 109 Ø6 EVP LIGHT EQ.G NEU
- 110 Ø6 EVP DETECTOR
- 111 Ø8 EVP LIGHT EQ.G NEU
- 112 Ø8 EVP DETECTOR
- 113 Ø2+Ø5 EVP LIGHT EQ.G NEU
- 114 Ø2+Ø5 EVP DETECTOR
- 115 Ø2+Ø5 EVP DETECTOR
- 116 Ø6 EVP LIGHT EQ.G NEU
- 117 Ø6 EVP DETECTOR
- 118 Ø8 EVP LIGHT EQ.G NEU
- 119 Ø8 EVP DETECTOR
- 120 Ø2+Ø5 EVP LIGHT EQ.G NEU
- 121 Ø2+Ø5 EVP DETECTOR
- 122 Ø2+Ø5 EVP DETECTOR
- 123 Ø6 EVP LIGHT EQ.G NEU
- 124 Ø6 EVP DETECTOR
- 125 Ø8 EVP LIGHT EQ.G NEU
- 126 Ø8 EVP DETECTOR
- 127 Ø2+Ø5 EVP LIGHT EQ.G NEU
- 128 Ø2+Ø5 EVP DETECTOR
- 129 Ø2+Ø5 EVP DETECTOR
- 130 Ø6 EVP LIGHT EQ.G NEU
- 131 Ø6 EVP DETECTOR
- 132 Ø8 EVP LIGHT EQ.G NEU
- 133 Ø8 EVP DETECTOR
- 134 Ø2+Ø5 EVP LIGHT EQ.G NEU
- 135 Ø2+Ø5 EVP DETECTOR
- 136 Ø2+Ø5 EVP DETECTOR
- 137 Ø6 EVP LIGHT EQ.G NEU
- 138 Ø6 EVP DETECTOR
- 139 Ø8 EVP LIGHT EQ.G NEU
- 140 Ø8 EVP DETECTOR
- 141 Ø2+Ø5 EVP LIGHT EQ.G NEU
- 142 Ø2+Ø5 EVP DETECTOR
- 143 Ø2+Ø5 EVP DETECTOR
- 144 Ø6 EVP LIGHT EQ.G NEU
- 145 Ø6 EVP DETECTOR
- 146 Ø8 EVP LIGHT EQ.G NEU
- 147 Ø8 EVP DETECTOR
- 148 Ø2+Ø5 EVP LIGHT EQ.G NEU
- 149 Ø2+Ø5 EVP DETECTOR
- 150 Ø2+Ø5 EVP DETECTOR
- 151 Ø6 EVP LIGHT EQ.G NEU
- 152 Ø6 EVP DETECTOR
- 153 Ø8 EVP LIGHT EQ.G NEU
- 154 Ø8 EVP DETECTOR
- 155 Ø2+Ø5 EVP LIGHT EQ.G NEU
- 156 Ø2+Ø5 EVP DETECTOR
- 157 Ø2+Ø5 EVP DETECTOR
- 158 Ø6 EVP LIGHT EQ.G NEU
- 159 Ø6 EVP DETECTOR
- 160 Ø8 EVP LIGHT EQ.G NEU
- 161 Ø8 EVP DETECTOR
- 162 Ø2+Ø5 EVP LIGHT EQ.G NEU
- 163 Ø2+Ø5 EVP DETECTOR
- 164 Ø2+Ø5 EVP DETECTOR
- 165 Ø6 EVP LIGHT EQ.G NEU
- 166 Ø6 EVP DETECTOR
- 167 Ø8 EVP LIGHT EQ.G NEU
- 168 Ø8 EVP DETECTOR
- 169 Ø2+Ø5 EVP LIGHT EQ.G NEU
- 170 Ø2+Ø5 EVP DETECTOR
- 171 Ø2+Ø5 EVP DETECTOR
- 172 Ø6 EVP LIGHT EQ.G NEU
- 173 Ø6 EVP DETECTOR
- 174 Ø8 EVP LIGHT EQ.G NEU
- 175 Ø8 EVP DETECTOR
- 176 Ø2+Ø5 EVP LIGHT EQ.G NEU
- 177 Ø2+Ø5 EVP DETECTOR
- 178 Ø2+Ø5 EVP DETECTOR
- 179 Ø6 EVP LIGHT EQ.G NEU
- 180 Ø6 EVP DETECTOR
- 181 Ø8 EVP LIGHT EQ.G NEU
- 182 Ø8 EVP DETECTOR
- 183 Ø2+Ø5 EVP LIGHT EQ.G NEU
- 184 Ø2+Ø5 EVP DETECTOR
- 185 Ø2+Ø5 EVP DETECTOR
- 186 Ø6 EVP LIGHT EQ.G NEU
- 187 Ø6 EVP DETECTOR
- 188 Ø8 EVP LIGHT EQ.G NEU
- 189 Ø8 EVP DETECTOR
- 190 Ø2+Ø5 EVP LIGHT EQ.G NEU
- 191 Ø2+Ø5 EVP DETECTOR
- 192 Ø2+Ø5 EVP DETECTOR
- 193 Ø6 EVP LIGHT EQ.G NEU
- 194 Ø6 EVP DETECTOR
- 195 Ø8 EVP LIGHT EQ.G NEU
- 196 Ø8 EVP DETECTOR
- 197 Ø2+Ø5 EVP LIGHT EQ.G NEU
- 198 Ø2+Ø5 EVP DETECTOR
- 199 Ø2+Ø5 EVP DETECTOR
- 200 Ø6 EVP LIGHT EQ.G NEU
- 201 Ø6 EVP DETECTOR
- 202 Ø8 EVP LIGHT EQ.G NEU
- 203 Ø8 EVP DETECTOR
- 204 Ø2+Ø5 EVP LIGHT EQ.G NEU
- 205 Ø2+Ø5 EVP DETECTOR
- 206 Ø2+Ø5 EVP DETECTOR
- 207 Ø6 EVP LIGHT EQ.G NEU
- 208 Ø6 EVP DETECTOR
- 209 Ø8 EVP LIGHT EQ.G NEU
- 210 Ø8 EVP DETECTOR
- 211 Ø2+Ø5 EVP LIGHT EQ.G NEU
- 212 Ø2+Ø5 EVP DETECTOR
- 213 Ø2+Ø5 EVP DETECTOR
- 214 Ø6 EVP LIGHT EQ.G NEU
- 215 Ø6 EVP DETECTOR
- 216 Ø8 EVP LIGHT EQ.G NEU
- 217 Ø8 EVP DETECTOR
- 218 Ø2+Ø5 EVP LIGHT EQ.G NEU
- 219 Ø2+Ø5 EVP DETECTOR
- 220 Ø2+Ø5 EVP DETECTOR
- 221 Ø6 EVP LIGHT EQ.G NEU
- 222 Ø6 EVP DETECTOR
- 223 Ø8 EVP LIGHT EQ.G NEU
- 224 Ø8 EVP DETECTOR
- 225 Ø2+Ø5 EVP LIGHT EQ.G NEU
- 226 Ø2+Ø5 EVP DETECTOR
- 227 Ø2+Ø5 EVP DETECTOR
- 228 Ø6 EVP LIGHT EQ.G NEU
- 229 Ø6 EVP DETECTOR
- 230 Ø8 EVP LIGHT EQ.G NEU
- 231 Ø8 EVP DETECTOR
- 232 Ø2+Ø5 EVP LIGHT EQ.G NEU
- 233 Ø2+Ø5 EVP DETECTOR
- 234 Ø2+Ø5 EVP DETECTOR
- 235 Ø6 EVP LIGHT EQ.G NEU
- 236 Ø6 EVP DETECTOR
- 237 Ø8 EVP LIGHT EQ.G NEU
- 238 Ø8 EVP DETECTOR
- 239 Ø2+Ø5 EVP LIGHT EQ.G NEU
- 240 Ø2+Ø5 EVP DETECTOR
- 241 Ø2+Ø5 EVP DETECTOR
- 242 Ø6 EVP LIGHT EQ.G NEU
- 243 Ø6 EVP DETECTOR
- 244 Ø8 EVP LIGHT EQ.G NEU
- 245 Ø8 EVP DETECTOR
- 246 Ø2+Ø5 EVP LIGHT EQ.G NEU
- 247 Ø2+Ø5 EVP DETECTOR
- 248 Ø2+Ø5 EVP DETECTOR
- 249 Ø6 EVP LIGHT EQ.G NEU
- 250 Ø6 EVP DETECTOR
- 251 Ø8 EVP LIGHT EQ.G NEU
- 252 Ø8 EVP DETECTOR
- 253 Ø2+Ø5 EVP LIGHT EQ.G NEU
- 254 Ø2+Ø5 EVP DETECTOR
- 255 Ø2+Ø5 EVP DETECTOR
- 256 Ø6 EVP LIGHT EQ.G NEU
- 257 Ø6 EVP DETECTOR
- 258 Ø8 EVP LIGHT EQ.G NEU
- 259 Ø8 EVP DETECTOR
- 260 Ø2+Ø5 EVP LIGHT EQ.G NEU
- 261 Ø2+Ø5 EVP DETECTOR
- 262 Ø2+Ø5 EVP DETECTOR
- 263 Ø6 EVP LIGHT EQ.G NEU
- 264 Ø6 EVP DETECTOR
- 265 Ø8 EVP LIGHT EQ.G NEU
- 266 Ø8 EVP DETECTOR
- 267 Ø2+Ø5 EVP LIGHT EQ.G NEU
- 268 Ø2+Ø5 EVP DETECTOR
- 269 Ø2+Ø5 EVP DETECTOR
- 270 Ø6 EVP LIGHT EQ.G NEU
- 271 Ø6 EVP DETECTOR
- 272 Ø8 EVP LIGHT EQ.G NEU
- 273 Ø8 EVP DETECTOR
- 274 Ø2+Ø5 EVP LIGHT EQ.G NEU
- 275 Ø2+Ø5 EVP DETECTOR
- 276 Ø2+Ø5 EVP DETECTOR
- 277 Ø6 EVP LIGHT EQ.G NEU
- 278 Ø6 EVP DETECTOR
- 279 Ø8 EVP LIGHT EQ.G NEU
- 280 Ø8 EVP DETECTOR
- 281 Ø2+Ø5 EVP LIGHT EQ.G NEU
- 282 Ø2+Ø5 EVP DETECTOR
- 283 Ø2+Ø5 EVP DETECTOR
- 284 Ø6 EVP LIGHT EQ.G NEU
- 285 Ø6 EVP DETECTOR
- 286 Ø8 EVP LIGHT EQ.G NEU
- 287 Ø8 EVP DETECTOR
- 288 Ø2+Ø5 EVP LIGHT EQ.G NEU
- 289 Ø2+Ø5 EVP DETECTOR
- 290 Ø2+Ø5 EVP DETECTOR
- 291 Ø6 EVP LIGHT EQ.G NEU
- 292 Ø6 EVP DETECTOR
- 293 Ø8 EVP LIGHT EQ.G NEU
- 294 Ø8 EVP DETECTOR
- 295 Ø2+Ø5 EVP LIGHT EQ.G NEU
- 296 Ø2+Ø5 EVP DETECTOR
- 297 Ø2+Ø5 EVP DETECTOR
- 298 Ø6 EVP LIGHT EQ.G NEU
- 299 Ø6 EVP DETECTOR
- 300 Ø8 EVP LIGHT EQ.G NEU
- 301 Ø8 EVP DETECTOR
- 302 Ø2+Ø5 EVP LIGHT EQ.G NEU
- 303 Ø2+Ø5 EVP DETECTOR
- 304 Ø2+Ø5 EVP DETECTOR
- 305 Ø6 EVP LIGHT EQ.G NEU
- 306 Ø6 EVP DETECTOR
- 307 Ø8 EVP LIGHT EQ.G NEU
- 308 Ø8 EVP DETECTOR
- 309 Ø2+Ø5 EVP LIGHT EQ.G NEU
- 310 Ø2+Ø5 EVP DETECTOR
- 311 Ø2+Ø5 EVP DETECTOR
- 312 Ø6 EVP LIGHT EQ.G NEU
- 313 Ø6 EVP DETECTOR
- 314 Ø8 EVP LIGHT EQ.G NEU
- 315 Ø8 EVP DETECTOR
- 316 Ø2+Ø5 EVP LIGHT EQ.G NEU
- 317 Ø2+Ø5 EVP DETECTOR
- 318 Ø2+Ø5 EVP DETECTOR
- 319 Ø6 EVP LIGHT EQ.G NEU
- 320 Ø6 EVP DETECTOR
- 321 Ø8 EVP LIGHT EQ.G NEU
- 322 Ø8 EVP DETECTOR
- 323 Ø2+Ø5 EVP LIGHT EQ.G NEU
- 324 Ø2+Ø5 EVP DETECTOR
- 325 Ø2+Ø5 EVP DETECTOR
- 326 Ø6 EVP LIGHT EQ.G NEU
- 327 Ø6 EVP DETECTOR
- 328 Ø8 EVP LIGHT EQ.G NEU
- 329 Ø8 EVP DETECTOR
- 330 Ø2+Ø5 EVP LIGHT EQ.G NEU
- 331 Ø2+Ø5 EVP DETECTOR
- 332 Ø2+Ø5 EVP DETECTOR
- 333 Ø6 EVP LIGHT EQ.G NEU
- 334 Ø6 EVP DETECTOR
- 335 Ø8 EVP LIGHT EQ.G NEU
- 336 Ø8 EVP DETECTOR
- 337 Ø2+Ø5 EVP LIGHT EQ.G NEU
- 338 Ø2+Ø5 EVP DETECTOR
- 339 Ø2+Ø5 EVP DETECTOR
- 340 Ø6 EVP LIGHT EQ.G NEU
- 341 Ø6 EVP DETECTOR
- 342 Ø8 EVP LIGHT EQ.G NEU
- 343 Ø8 EVP DETECTOR
- 344 Ø2+Ø5 EVP LIGHT EQ.G NEU
- 345 Ø2+Ø5 EVP DETECTOR
- 346 Ø2+Ø5 EVP DETECTOR
- 347 Ø6 EVP LIGHT EQ.G NEU
- 348 Ø6 EVP DETECTOR
- 349 Ø8 EVP LIGHT EQ.G NEU
- 350 Ø8 EVP DETECTOR
- 351 Ø2+Ø5 EVP LIGHT EQ.G NEU
- 352 Ø2+Ø5 EVP DETECTOR
- 353 Ø2+Ø5 EVP DETECTOR
- 354 Ø6 EVP LIGHT EQ.G NEU
- 355 Ø6 EVP DETECTOR
- 356 Ø8 EVP LIGHT EQ.G NEU
- 357 Ø8 EVP DETECTOR
- 358 Ø2+Ø5 EVP LIGHT EQ.G NEU
- 359 Ø2+Ø5 EVP DETECTOR
- 360 Ø2+Ø5 EVP DETECTOR
- 361 Ø6 EVP LIGHT EQ.G NEU
- 362 Ø6 EVP DETECTOR
- 363 Ø8 EVP LIGHT EQ.G NEU
- 364 Ø8 EVP DETECTOR
- 365 Ø2+Ø5 EVP LIGHT EQ.G NEU
- 366 Ø2+Ø5 EVP DETECTOR
- 367 Ø2+Ø5 EVP DETECTOR
- 368 Ø6 EVP LIGHT EQ.G NEU
- 369 Ø6 EVP DETECTOR
- 370 Ø8 EVP LIGHT EQ.G NEU
- 371 Ø8 EVP DETECTOR
- 372 Ø2+Ø5 EVP LIGHT EQ.G NEU
- 373 Ø2+Ø5 EVP DETECTOR
- 374 Ø2+Ø5 EVP DETECTOR
- 375 Ø6 EVP LIGHT EQ.G NEU
- 376 Ø6 EVP DETECTOR
- 377 Ø8 EVP LIGHT EQ.G NEU
- 378 Ø8 EVP DETECTOR
- 379 Ø2+Ø5 EVP LIGHT EQ.G NEU
- 380 Ø2+Ø5 EVP DETECTOR
- 381 Ø2+Ø5 EVP DETECTOR
- 382 Ø6 EVP LIGHT EQ.G NEU
- 383 Ø6 EVP DETECTOR
- 384 Ø8 EVP LIGHT EQ.G NEU
- 385 Ø8 EVP DETECTOR
- 386 Ø2+Ø5 EVP LIGHT EQ.G NEU
- 387 Ø2+Ø5 EVP DETECTOR
- 388 Ø2+Ø5 EVP DETECTOR
- 389 Ø6 EVP LIGHT EQ.G NEU
- 390 Ø6 EVP DETECTOR
- 391 Ø8 EVP LIGHT EQ.G NEU
- 392 Ø8 EVP DETECTOR
- 393 Ø2+Ø5 EVP LIGHT EQ.G NEU
- 394 Ø2+Ø5 EVP DETECTOR
- 395 Ø2+Ø5 EVP DETECTOR
- 396 Ø6 EVP LIGHT EQ.G NEU
- 397 Ø6 EVP DETECTOR
- 398 Ø8 EVP LIGHT EQ.G NEU
- 399 Ø8 EVP DETECTOR
- 400 Ø2+Ø5 EVP LIGHT EQ.G NEU
- 401 Ø2+Ø5 EVP DETECTOR
- 402 Ø2+Ø5 EVP DETECTOR
- 403 Ø6 EVP LIGHT EQ.G NEU
- 404 Ø6 EVP DETECTOR
- 405 Ø8 EVP LIGHT EQ.G NEU
- 406 Ø8 EVP DETECTOR
- 407 Ø2+Ø5 EVP LIGHT EQ.G NEU
- 408 Ø2+Ø5 EVP DETECTOR
- 409 Ø2+Ø5 EVP DETECTOR
- 410 Ø6 EVP LIGHT EQ.G NEU
- 411 Ø6 EVP DETECTOR
- 412 Ø8 EVP LIGHT EQ.G NEU
- 413 Ø8 EVP DETECTOR
- 414 Ø2+Ø5 EVP LIGHT EQ.G NEU
- 415 Ø2+Ø5 EVP DETECTOR
- 416 Ø2+Ø5 EVP DETECTOR
- 417 Ø6 EVP LIGHT EQ.G NEU
- 418 Ø6 EVP DETECTOR
- 419 Ø8 EVP LIGHT EQ.G NEU
- 420 Ø8 EVP DETECTOR
- 421 Ø2+Ø5 EVP LIGHT EQ.G NEU
- 422 Ø2+Ø5 EVP DETECTOR
- 423 Ø2+Ø5 EVP DETECTOR
- 424 Ø6 EVP LIGHT EQ.G NEU
- 425 Ø6 EVP DETECTOR
- 426 Ø8 EVP LIGHT EQ.G NEU
- 427 Ø8 EVP DETECTOR
- 428 Ø2+Ø5 EVP LIGHT EQ.G NEU
- 429 Ø2+Ø5 EVP DETECTOR
- 430 Ø2+Ø5 EVP DETECTOR
- 431 Ø6 EVP LIGHT EQ.G NEU
- 432 Ø6 EVP DETECTOR
- 433 Ø8 EVP LIGHT EQ.G NEU
- 434 Ø8 EVP DETECTOR
- 435 Ø2+Ø5 EVP LIGHT EQ.G NEU
- 436 Ø2+Ø5 EVP DETECTOR
- 437 Ø2+Ø5 EVP DETECTOR
- 438 Ø6 EVP LIGHT EQ.G NEU
- 439 Ø6 EVP DETECTOR
- 440 Ø8 EVP LIGHT EQ.G NEU
- 441 Ø8 EVP DETECTOR
- 442 Ø2+Ø5 EVP LIGHT EQ.G NEU
- 443 Ø2+Ø5 EVP DETECTOR
- 444 Ø2+Ø5 EVP DETECTOR
- 445 Ø6 EVP LIGHT EQ.G NEU
- 446 Ø6 EVP DETECTOR
- 447 Ø8 EVP LIGHT EQ.G NEU
- 448 Ø8 EVP DETECTOR
- 449 Ø2+Ø5 EVP LIGHT EQ.G NEU
- 450 Ø2+Ø5 EVP DETECTOR
- 451 Ø2+Ø5 EVP DETECTOR
- 452 Ø6 EVP LIGHT EQ.G NEU
- 453 Ø6 EVP DETECTOR
- 454 Ø8 EVP LIGHT EQ.G NEU
- 455 Ø8 EVP DETECTOR
- 456 Ø2+Ø5 EVP LIGHT EQ.G NEU
- 457 Ø2+Ø5 EVP DETECTOR
- 458 Ø2+Ø5 EVP DETECTOR
- 459 Ø6 EVP LIGHT EQ.G NEU
- 460 Ø6 EVP DETECTOR
- 461 Ø8 EVP LIGHT EQ.G NEU
- 462 Ø8 EVP DETECTOR
- 463 Ø2+Ø5 EVP LIGHT EQ.G NEU
- 464 Ø2+Ø5 EVP DETECTOR
- 465 Ø2+Ø5 EVP DETECTOR
- 466 Ø6 EVP LIGHT EQ.G NEU
- 467 Ø6 EVP DETECTOR
- 468 Ø8 EVP LIGHT EQ.G NEU
- 469 Ø8 EVP DETECTOR
- 470 Ø2+Ø5 EVP LIGHT EQ.G NEU
- 471 Ø2+Ø5 EVP DETECTOR
- 472 Ø2+Ø5 EVP DETECTOR
- 473 Ø6 EVP LIGHT EQ.G NEU
- 474 Ø6 EVP DETECTOR
- 475 Ø8 EVP LIGHT EQ.G NEU
- 476 Ø8 EVP DETECTOR
- 477 Ø2+Ø5 EVP LIGHT EQ.G NEU
- 478 Ø2+Ø5 EVP DETECTOR
- 479 Ø2+Ø5 EVP DETECTOR
- 480 Ø6 EVP LIGHT EQ.G NEU
- 481 Ø6 EVP DETECTOR
- 482 Ø8 EVP LIGHT EQ.G NEU
- 483 Ø8 EVP DETECTOR
- 484 Ø2+Ø5 EVP LIGHT EQ.G NEU
- 485 Ø2+Ø5 EVP DETECTOR
- 486 Ø2+Ø5 EVP DETECTOR
- 487 Ø6 EVP LIGHT EQ.G NEU
- 488 Ø6 EVP DETECTOR
- 489 Ø8 EVP LIGHT EQ.G NEU
- 490 Ø8 EVP DETECTOR
- 491 Ø2+Ø5 EVP LIGHT EQ.G NEU
- 492 Ø2+Ø5 EVP DETECTOR
- 493 Ø2+Ø5 EVP DETECTOR
- 494 Ø6 EVP LIGHT EQ.G NEU
- 495 Ø6 EVP DETECTOR
- 496 Ø8 EVP LIGHT EQ.G NEU
- 497 Ø8 EVP DETECTOR
- 498 Ø2+Ø5 EVP LIGHT EQ.G NEU
- 499 Ø2+Ø5 EVP DETECTOR
- 500 Ø2+Ø5 EVP DETECTOR

NOTES:
 1. ITEMS DENOTED WITH * ARE INCLUDED IN EVP SYSTEM PAY ITEM.
 2. ITEMS DENOTED WITH ** ARE INCLUDED IN THE TRAFFIC CONTROL INTERCONNECTION PAY ITEM.
 3. ITEMS DENOTED WITH ▲ ARE INCLUDED IN BRIDGE SYSTEM PAY ITEM.

28/250 E.W. 12/15/07 10:25:59 CAD_BMAP (an) 1259_xwd1.dgn

NO	DATE	BY	CHKD	APPR	REVISION
1	9-15-15	MAB	ASP	ASP	SOURCE OF POWER REVISION

I hereby certify that this plan, specification, or report was prepared by me or under my direct supervision and that I am a duly Licensed Professional Engineer under the laws of the State of Minnesota.
 Print Name: **ADRIAN S. POTTER**
Adrian S. Potter

STATE PROJECT NO. 002-683-004
 199-115-002
 STATE PROJECT NO. 0202-95 (TH 10)
 COUNTY PROJECT NO. 002-683-004

DRAWN BY M. BRESSLER
 DESIGNED BY M. BRESSLER
 CHECKED BY A. POTTER



ENGINEERS
 PLANNERS
 DESIGNERS

ANOKA COUNTY
 TRAFFIC SIGNAL PLANS
 T.H. 10 / C.S.A.H. 83 INTERCHANGE
 FIELD WIRING DIAGRAM LAYOUT (SYSTEM "A")

SHEET 432 OF 500

SYSTEM ID: 39839
 METER ADDRESS: 14489 ARMSTRONG BLVD NW