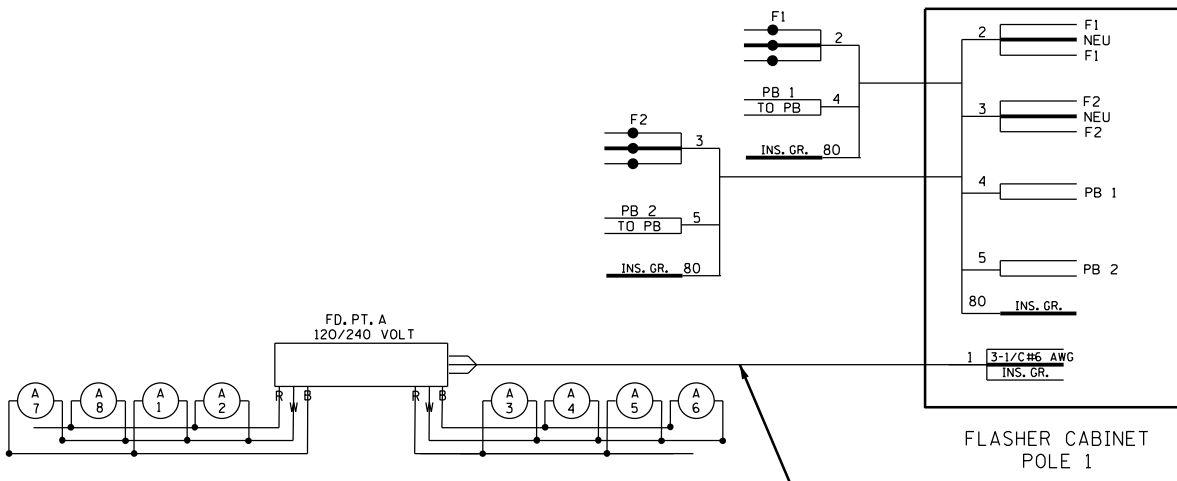


PLOTTED/REVISED: 12/3/2020

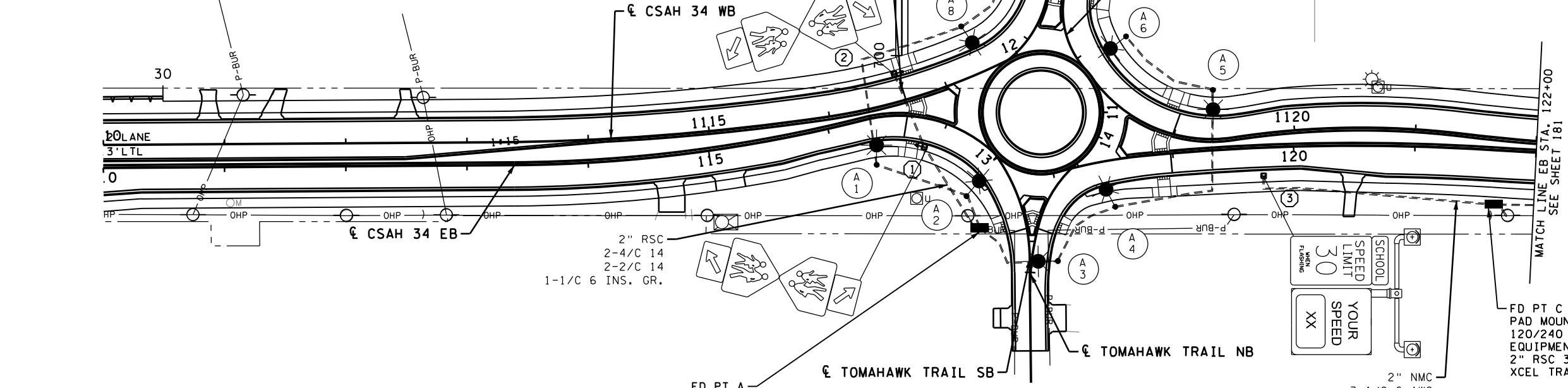
PATH & FILENAME: Projects\Minnesota\014400-000\Cad\Plan\4400-000-1101.dgn

STREET LIGHTING TABULATION		S
ITEM DESCRIPTION	UNIT	TOTAL
SALVAGE FLASHER SYSTEM	EACH	1
LIGHTING UNIT TYPE 9-40	EACH	16
LIGHT FOUNDATION DESIGN E	EACH	16
SERVICE CABINET -TYPE L1	EACH	3
SERVICE EQUIPMENT	EACH	3
EQUIPMENT PAD B	EACH	3
1.5" NON-METALLIC CONDUIT	LIN FT	1650
UNDERGROUND WIRE 1/C 8 AWG	LIN FT	6600
INSTALL FLASHER SYSTEM	LUMP SUM	1
PEDESTRIAN CROSSWALK FLASHER SYSTEM	SYSTEM	1

FEEDPOINT A LIGHTING STANDARDS AND FOUNDATIONS							
NO.	STATION	LT	RT	LOCATION	TYPE	FOUNDATION	NOTES
1	116+41		X	CSAH 34 EB	9-40	DESIGN E	
2	13+02		X	ROUNDAABOUT CIRCULAR	9-40	DESIGN E	
3	202+09		X	TOMAHAWK TR NB	9-40	DESIGN E	
4	13+80		X	ROUNDAABOUT CIRCULAR	9-40	DESIGN E	
5	1119+33	X		CSAH 34 WB	9-40	DESIGN E	
6	11+37		X	ROUNDAABOUT CIRCULAR	9-40	DESIGN E	
7	1204+64	X		TOMAHAWK TR SB	9-40	DESIGN E	
8	12+26		X	ROUNDAABOUT CIRCULAR	9-40	DESIGN E	



B AND R DENOTE CURRENT CARRYING CONDUCTORS
W DENOTES NEUTRAL CONDUCTOR
GROUND NOT SHOWN



- ② FURNISH BY ACHD, INSTALL BY CONTRACTOR:
 MODIFIED PEDESTAL CONCRETE FOUNDATION
 PEDESTAL POLE AND BASE (MNDOT STD PLATE 8112)
 POLE MOUNTED CONTROL CABINET
 2 S1-1 LED ENHANCED SIGNS (30"X30") BACK TO BACK
 1 W16-7PL (24"X18") AND 1 W16-7PL (24"X18") BACK TO BACK
 1 PED PUSHBUTTON (PB-2) AND SIGN
 F&I BY CONTRACTOR FROM FLASHER 1:
 2" RSC
 1-4/C 14
 1-2/C 14
 1-1/C 6 INS. GR.

- NOTES:
 1. THE CONTRACTOR SHALL BE RESPONSIBLE FOR LOCATING ALL UTILITIES PRIOR TO WORK.
 2. THE CONTRACTOR SHALL COORDINATE THE PLACEMENT OF CONDUIT AND FOUNDATIONS WITH OTHER CONSTRUCTION ACTIVITIES IN THE AREA.
 3. THE CONTRACTOR IS RESPONSIBLE FOR ALL PERMITS AND UTILITY COORDINATION.
 4. ALL MATERIAL AND WORK SHALL BE IN ACCORDANCE WITH THE N.E.C.
 5. LIGHTING UNITS MUST MAINTAIN A MINIMUM CLEARANCE OF 10' FROM OVERHEAD POWER LINES.
 6. EXACT LOCATIONS OF LIGHT AND SERVICE CABINET FOUNDATIONS SHALL BE LOCATED BY THE ENGINEER IN THE FIELD.

FD PT A
 PAD MOUNTED SERVICE CABINET
 120/240 V (METERED).
 EQUIPMENT PAD TYPE B REQUIRED
 2" RSC 3-1/C 2 AWG TO
 XCEL TRANSFORMER

- ① FURNISH BY ACHD, INSTALL BY CONTRACTOR:
 MODIFIED PEDESTAL CONCRETE FOUNDATION
 PEDESTAL POLE AND BASE (MNDOT STD PLATE 8112)
 POLE MOUNTED CONTROL CABINET
 2 S1-1 LED ENHANCED SIGNS (30"X30") BACK TO BACK
 1 W16-7PL (24"X18") AND 1 W16-7PL (24"X18") BACK TO BACK
 1 PED PUSHBUTTON (PB-1) AND SIGN
 F&I BY CONTRACTOR FROM CABINET:
 2" RSC
 2-4/C 14
 2-2/C 14
 1-1/C 6 INS. GR.

- ③ SALVAGE BY ACHD:
 EXISTING DRIVER FEEDBACK SYSTEM (PANELS, BEACONS, POLE)
 REMOVE BY CONTRACTOR:
 EXISTING PEDESTAL FOUNDATION
 FURNISH BY ACHD, INSTALL BY CONTRACTOR:
 DRIVER FEEDBACK SYSTEM (PANELS, BEACONS, POLE)
 F&I BY CONTRACTOR:
 PEDESTAL FOUNDATION (MNDOT STD PLATE 8112)

LEGEND

- LIGHTING UNIT TYPE 9-40
- 1.5" NMC WITH 3-1/C 8 AWG AND 1-1/C 8 AWG GR. (UNLESS NOTED OTHERWISE)
- SERVICE CABINET TYPE L1

NO.	DATE	BY	CHK	REVISIONS

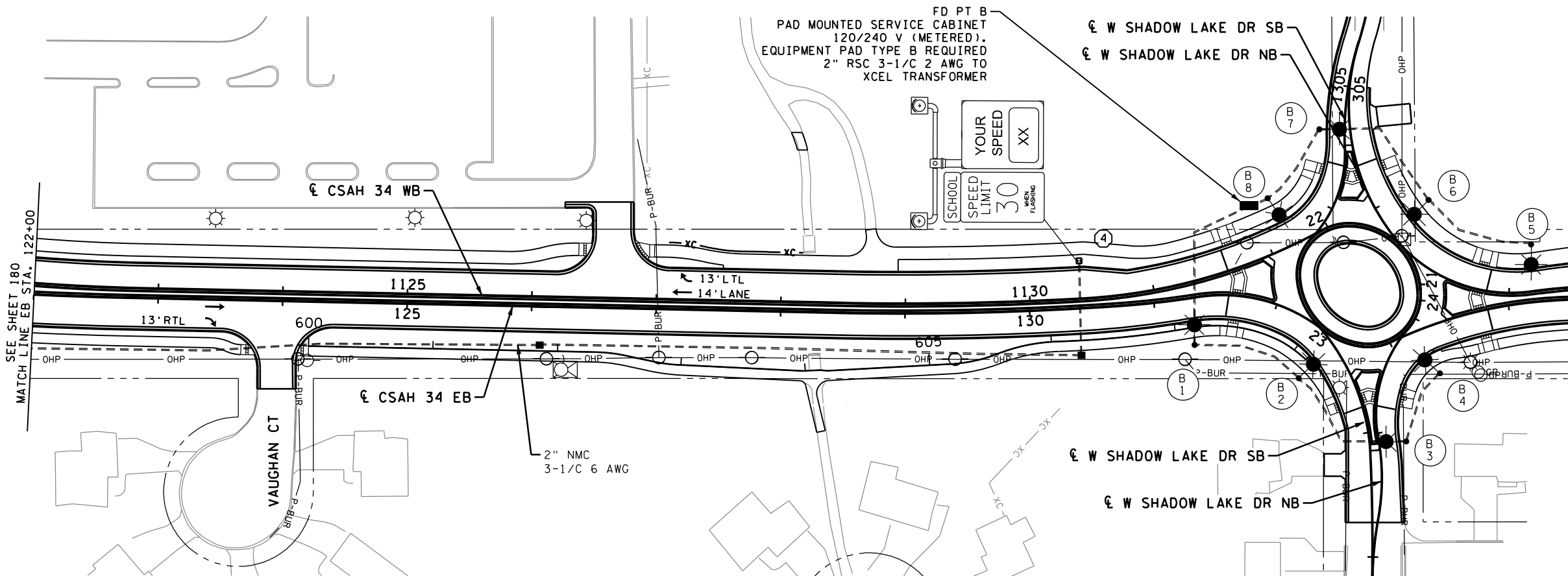
Design By: MF
 Plan By: MF
 Checked By: ES
 Approved By: SD
 I HEREBY CERTIFY THAT THIS PLAN, SPECIFICATION, OR REPORT WAS PREPARED BY OR UNDER MY DIRECT SUPERVISION AND THAT I AM A DULY LICENSED PROFESSIONAL ENGINEER UNDER THE LAWS OF THE STATE OF MINNESOTA.
 SEAN DELMORE, PE
 DATE 12/3/2020 LICENSE # 40945

wsb
CSAH 34 (Birch Street) Improvements
 Anoka County Highway Department

ANOKA COUNTY, MINNESOTA
 STA 110+00 TO STA 122+00
ELECTRICAL PLAN
 S.A.P. 002-634-003 & S.A.P. 210-020-010

SHEET
180
 OF
195
 SHEETS

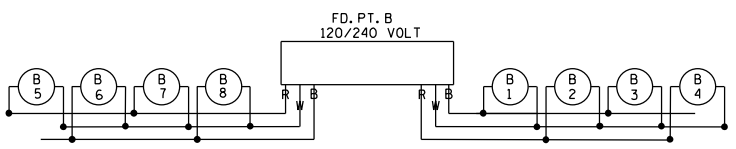
- ④ SALVAGE BY ACHD:
EXISTING DRIVER FEEDBACK SYSTEM
(PANELS, BEACONS, POLE)
- REMOVE BY CONTRACTOR:
EXISTING PEDESTAL FOUNDATION
- FURNISH BY ACHD, INSTALL BY CONTRACTOR:
DRIVER FEEDBACK SYSTEM (PANELS, BEACONS, POLE)
- F&I BY CONTRACTOR:
PEDESTAL FOUNDATION (MNDOT STD PLATE 8112)



LEGEND

- LIGHTING UNIT TYPE 9-40
- 1.5" NMC WITH 3-1/8 AWG AND 1-1/8 AWG GR. (UNLESS NOTED OTHERWISE)
- SERVICE CABINET TYPE L1
- HANDHOLE

- NOTES:**
1. THE CONTRACTOR SHALL BE RESPONSIBLE FOR LOCATING ALL UTILITIES PRIOR TO WORK.
 2. THE CONTRACTOR SHALL COORDINATE THE PLACEMENT OF CONDUIT AND FOUNDATIONS WITH OTHER CONSTRUCTION ACTIVITIES IN THE AREA.
 3. THE CONTRACTOR IS RESPONSIBLE FOR ALL PERMITS AND UTILITY COORDINATION.
 4. ALL MATERIAL AND WORK SHALL BE IN ACCORDANCE WITH THE N.E.C.
 5. LIGHTING UNITS MUST MAINTAIN A MINIMUM CLEARANCE OF 10' FROM OVERHEAD POWER LINES.
 6. EXACT LOCATIONS OF LIGHT AND SERVICE CABINET FOUNDATIONS SHALL BE LOCATED BY THE ENGINEER IN THE FIELD.



B AND R DENOTE CURRENT CARRYING CONDUCTORS
W DENOTES NEUTRAL CONDUCTOR
GROUND NOT SHOWN

FEEDPOINT B LIGHTING STANDARDS AND FOUNDATIONS							
NO.	STATION	LT	RT	LOCATION	TYPE	FOUNDATION	NOTES
1	131+32		X	CSAH 34 EB	9-40	DESIGN E	
2	23+13		X	ROUNDAABOUT CIRCULAR	9-40	DESIGN E	
3	301+93		X	WEST SHADOW NB	9-40	DESIGN E	
4	23+67		X	ROUNDAABOUT CIRCULAR	9-40	DESIGN E	
5	1134+18	X		CSAH 34 WB	9-40	DESIGN E	
6	21+45		X	ROUNDAABOUT CIRCULAR	9-40	DESIGN E	
7	1304+65	X		WEST SHADOW SB	9-40	DESIGN E	
8	22+27		X	ROUNDAABOUT CIRCULAR	9-40	DESIGN E	

NO.	DATE	BY	CHK	REVISIONS

Design By: MF
 Plan By: MF
 Checked By: ES
 Approved By: SD

I HEREBY CERTIFY THAT THIS PLAN, SPECIFICATION, OR REPORT WAS PREPARED BY OR UNDER MY DIRECT SUPERVISION AND THAT I AM A DULY LICENSED PROFESSIONAL ENGINEER UNDER THE LAWS OF THE STATE OF MINNESOTA.

Sean Delmore
 SEAN DELMORE, PE
 DATE 12/3/2020 LICENSE # 40945



ANOKA COUNTY, MINNESOTA
 STA 122+00 TO STA 145+00
ELECTRICAL PLAN
 S.A.P. 002-634-003 & S.A.P. 210-020-010

SHEET
181
 OF
195
 SHEETS