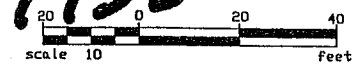
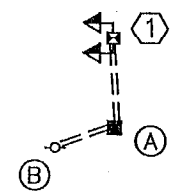
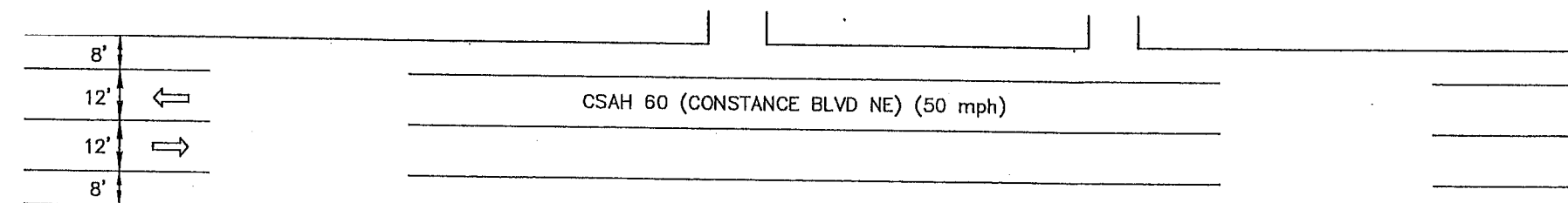


Motor address
1700 Constance Blvd. NE

7937 + 7938



WEST FLASHER SYSTEM



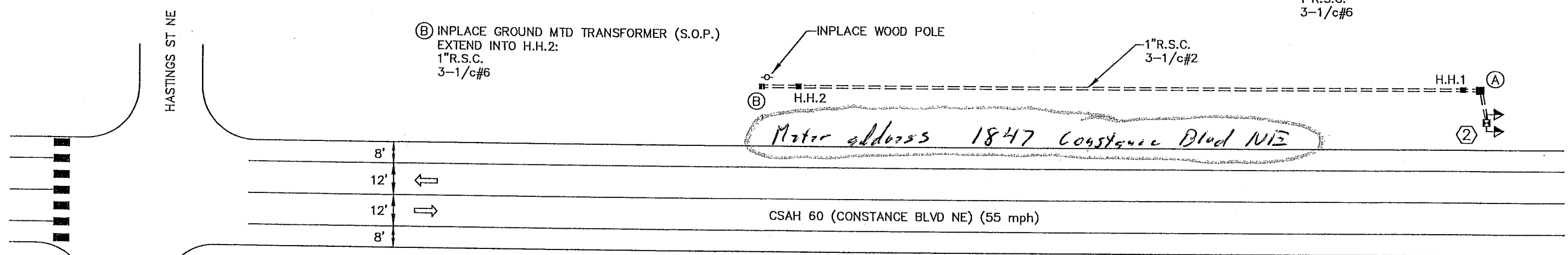
(B) INPLACE WOOD POLE (S.O.P.)
1"R.S.C. RISER AND WEATHERHEAD
3-1/c#6
EXTEND TO SERVICE CABINET:
1"R.S.C.
3-1/c#6

(A) FLASHER/SIGN SYSTEM SERVICE CABINET
CONCRETE CABINET FOUNDATION
1-60A/2P MAIN BREAKER
1-20A/1P SIGN/FLASHER BREAKER
EXTEND TO POLE 1:
1"R.S.C.
1-3/c#12
EXTEND TO WOOD POLE (S.O.P.):
1"R.S.C.
3-1/c#6

(1) PEDESTAL FOUNDATION
12' PEDESTAL POLE (INCLUDES BASE)
WIND COLLAR FOR PEDESTAL POLE
2-12" LED YELLOW FLASHERS WITH
VISORS, BRACKETING, AND SLIPFITTER COLLAR
(FACING EASTBOUND TRAFFIC)
3M RADAR SPEED SIGN (YOUR SPEED XX)-
(36"x48")-POLE MOUNTED
S5-1 (SCHOOL-SPEED LIMIT 30-WHEN FLASHING)
SIGN PANEL (24"x48")-POLE MOUNTED
1/2" EL FROM BOTTOM OF 3M SIGN PANEL TO
PEDESTAL POLE
2-1/c#10 (EXTEND TO POLE BASE)
EXTEND TO SERVICE CABINET:
1"R.S.C.
1-3/c#12

(2) PEDESTAL FOUNDATION
12' PEDESTAL POLE (INCLUDES BASE)
WIND COLLAR FOR PEDESTAL POLE
2-12" LED YELLOW FLASHERS WITH
VISORS, BRACKETING, AND SLIPFITTER COLLAR
(FACING WESTBOUND TRAFFIC)
3M RADAR SPEED SIGN (YOUR SPEED XX)-
(36"x48")-POLE MOUNTED
S5-1 (SCHOOL-SPEED LIMIT 30-WHEN FLASHING)
SIGN PANEL (24"x48")-POLE MOUNTED
1/2" EL FROM BOTTOM OF 3M SIGN PANEL TO
PEDESTAL POLE
2-1/c#10 (EXTEND TO POLE BASE)
EXTEND TO SERVICE CABINET:
1"R.S.C.
1-3/c#12

EAST FLASHER SYSTEM



(B) INPLACE GROUND MTD TRANSFORMER (S.O.P.)
EXTEND INTO H.H.2:
1"R.S.C.
3-1/c#6

INPLACE WOOD POLE
1"R.S.C.
3-1/c#2

(A) FLASHER/SIGN SYSTEM SERVICE CABINET
CONCRETE CABINET FOUNDATION
1-60A/2P MAIN BREAKER
1-20A/1P SIGN/FLASHER BREAKER
EXTEND TO POLE 2:
1"R.S.C.
1-3/c#12
EXTEND INTO H.H.1:
1"R.S.C.
3-1/c#6

Motor address 1847 Constance Blvd NE

NOTES:

- 1) HANDHOLES SHALL BE PVC HANDHOLES WITH METAL FRAMES AND COVERS PER MNDOT STANDARD PLATE NO. 8114A (WITHOUT CONCRETE COLLARS).
- 2) SEE DETAILS FOR FURTHER INFORMATION REGARDING MOUNTING OF ALL FLASHER POLE MATERIALS AND ELECTRICAL EQUIPMENT.
- 3) FLASHER SYSTEM SHALL BE TIME OF DAY ACTUATED.

S:\AEVA\ANOKA\COMMUNITY\SCHOOL FLASHERS\2008\PLANS.DWG

DESIGNER:	JMG			
CHECKED BY:	JMG			
APPROVED BY:	JMG			
DESIGN TEAM	NO.	BY	DATE	REVISIONS

© SHORT ELLIOTT HENDRICKSON 2004. ANY USE OR REUSE OF THIS PLAN/DRAWING AND THE CORRESPONDING COMPUTER AIDED DESIGN/DRAFTING FILES WITHOUT THE EXPRESS WRITTEN CONSENT OF SEHJS IS PROHIBITED. SEH SHALL NOT BE RESPONSIBLE FOR ANY UNAUTHORIZED USE OR REUSE OF THE MATERIALS, OR DAMAGES RESULTING THEREFROM.

I HEREBY CERTIFY THAT THIS PLAN WAS PREPARED BY ME OR UNDER MY DIRECT SUPERVISION AND THAT I AM A DULY LICENSED PROFESSIONAL ENGINEER UNDER THE LAWS OF THE STATE OF MINNESOTA.
SIGNATURE: _____ LIC. NO. 22457
PRINTED NAME: JOHN M. GRAY DATE 09/29/2008

ANOKA COUNTY, MINNESOTA
2008 SCHOOL FLASHERS
CITY OF HAM LAKE

SCHOOL SPEED ZONE
FLASHER/SIGN SYSTEMS
INTERSECTION LAYOUT
CSAH 60 (CONSTANCE BLVD NE) AT
MCKINLEY ELEMENTARY SCHOOL

FILE NO.	AANOKC0001.00
DATE	09/29/2008

2
5