

WEST FLASHER SYSTEM



EAST FLASHER SYSTEM

- (A) INPLACE WOOD POLE (S.O.P.) (CONNEXUS)
- F & I METER AND DISCONNECT—WOOD POLE MOUNTED
 1-60A/2P MAIN BREAKER
 4-20A/1P SIGN/FLASHER BREAKERS
 EXTEND ABOVE METER AND UP WOOD POLE:
 1 1/4" R.S.C. RISER AND WEATHERHEAD
 3-1/c#6
 BETWEEN METER AND DISCONNECT:
 1 1/4" R.S.C.
 3-1/c#6
 EXTEND BELOW DISCONNECT INTO H.H.1:
 2" R.S.C.
 1-3/c#12

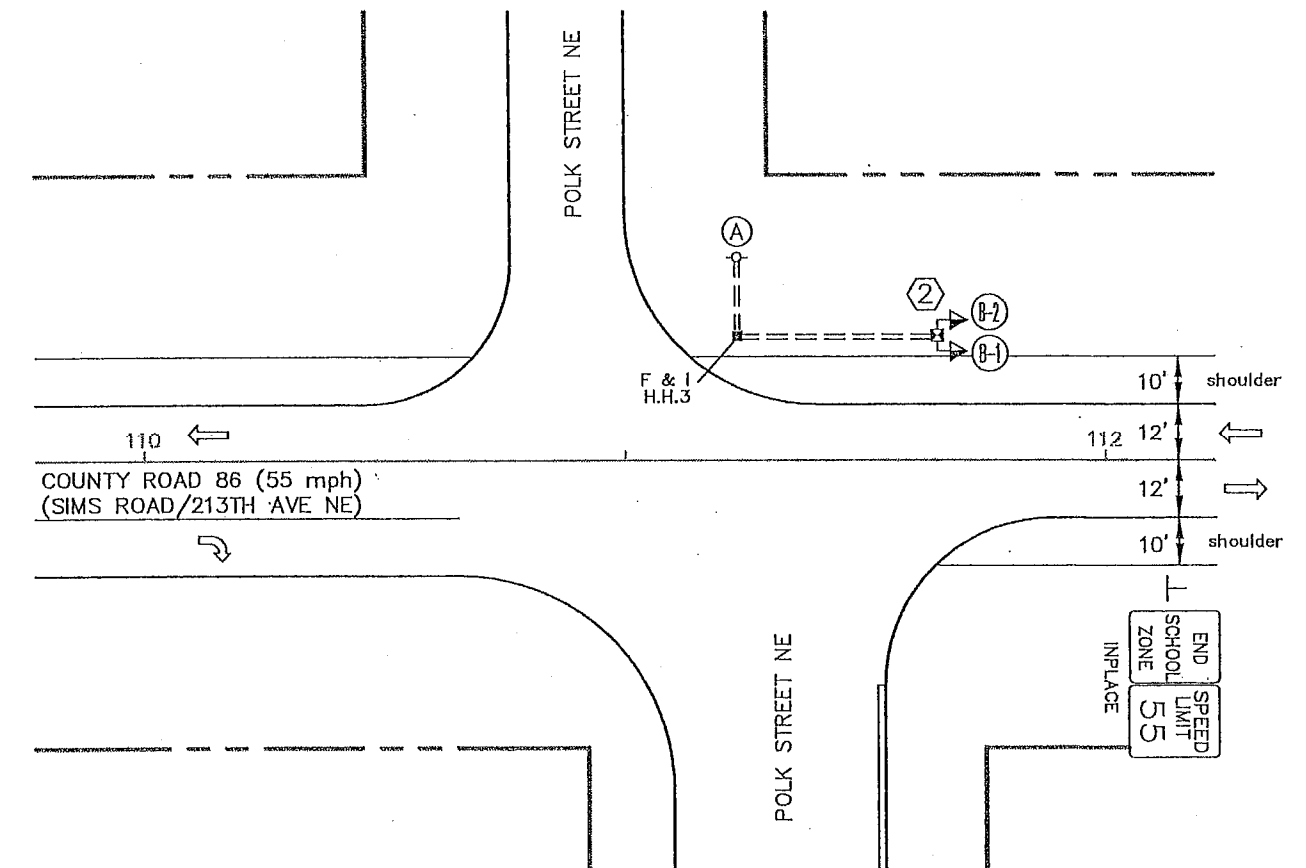
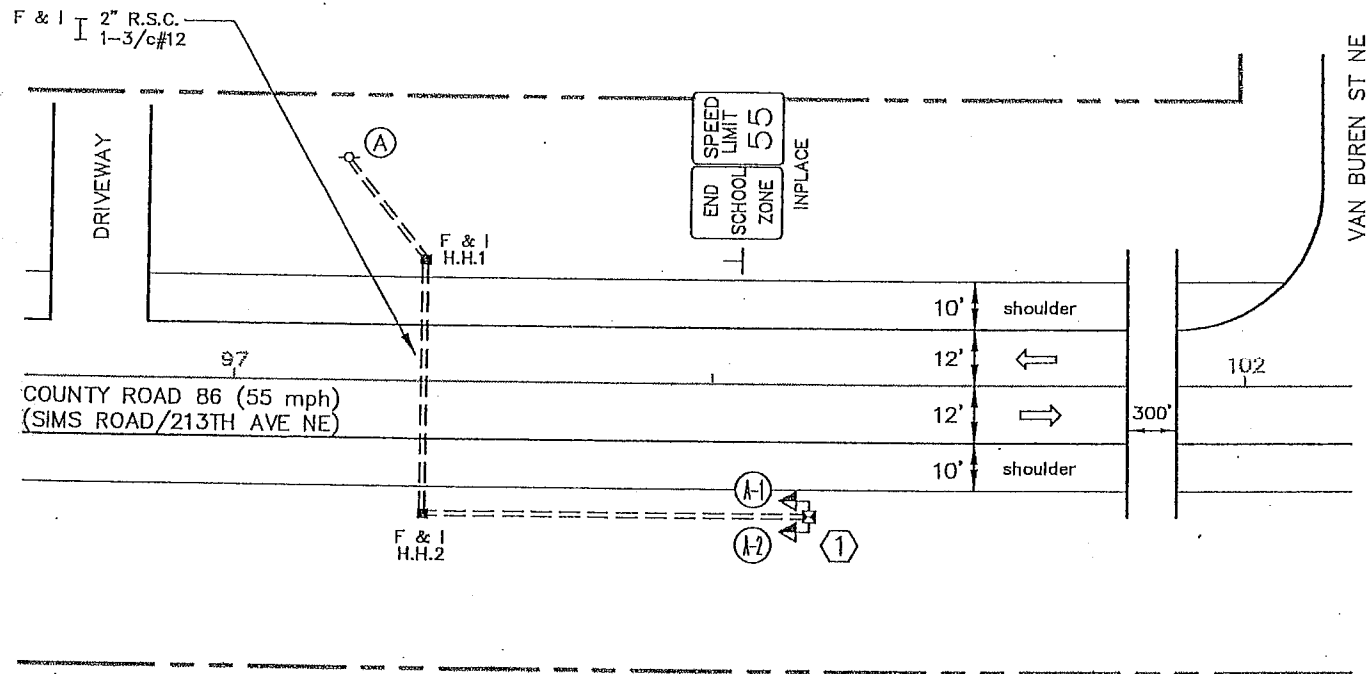
7943

7944

- (2) ITEMS TO BE FURNISHED & INSTALLED BY COUNTY

- 14' PEDESTAL POLE (INCLUDES BASE)
 WIND COLLAR FOR PEDESTAL POLE
 2-12" LED YELLOW FLASHERS WITH VISORS, BRACKETING, AND SLIPFITTER COLLAR (FACING WESTBOUND TRAFFIC)
 RADAR SPEED SIGN (YOUR SPEED XX)—(30"x41")—POLE MOUNTED
 S5-1 (SCHOOL—SPEED LIMIT 35—WHEN FLASHING) SIGN PANEL (24"x48")—POLE MOUNTED
 1/2" EL FROM BOTTOM OF RADAR SIGN DISCONNECT BOX TO PEDESTAL POLE
 ELECTRICAL CABLES FROM SIGN PANEL AND FLASHERS TO PEDESTAL POLE BASE (CONNECT TO 1-3/c#12 IN POLE BASE)

- F & I PEDESTAL FOUNDATION
 EXTEND INTO H.H.3:
 2" R.S.C.
 1-3/c#12



- (1) ITEMS TO BE FURNISHED & INSTALLED BY COUNTY

- 14' PEDESTAL POLE (INCLUDES BASE)
 WIND COLLAR FOR PEDESTAL POLE
 2-12" LED YELLOW FLASHERS WITH VISORS, BRACKETING, AND SLIPFITTER COLLAR (FACING EASTBOUND TRAFFIC)
 RADAR SPEED SIGN (YOUR SPEED XX)—(30"x41")—POLE MOUNTED
 S5-1 (SCHOOL—SPEED LIMIT 35—WHEN FLASHING) SIGN PANEL (24"x48")—POLE MOUNTED
 1/2" EL FROM BOTTOM OF RADAR SIGN DISCONNECT BOX TO PEDESTAL POLE
 ELECTRICAL CABLES FROM SIGN PANEL AND FLASHERS TO PEDESTAL POLE BASE (CONNECT TO 1-3/c#12 IN POLE BASE)

- F & I PEDESTAL FOUNDATION
 EXTEND INTO H.H.2:
 2" R.S.C.
 1-3/c#12

FLASHER SYSTEM NOTES:

- SEE SPECIAL PROVISIONS AND DETAILS FOR FURTHER INFORMATION REGARDING FLASHER SYSTEM INSTALLATION.
- FLASHER/SIGN SYSTEM SHALL BE TIME OF DAY ACTUATED.
- LOCATION OF FOUNDATION AND HANDHOLES SHALL BE DETERMINED IN THE FIELD BY THE ENGINEER.
- INPLACE SIGN AND POST REMOVAL ADJACENT TO NEW PEDESTAL POLE MOUNTED FLASHER AND SIGN INSTALLATION SHALL BE COMPLETED BY COUNTY AT NO EXPENSE TO THE CONTRACTOR.
- ALL YELLOW FLASHERS WILL BE LED.
- SEE DETAILS FOR FURTHER INFORMATION REGARDING MOUNTING OF ALL FLASHER POLE MATERIALS AND ELECTRICAL EQUIPMENT.
- HANDHOLES SHALL BE PVC HANDHOLES WITH METAL FRAMES AND COVERS PER MN/DOT STANDARD PLATE 8114.
- CONTRACTOR SHALL BE RESPONSIBLE FOR ALL CONTACT WITH POWER COMPANY (CONNEXUS/GREAT RIVER ENERGY) FOR POWER CONNECTION.

- (A) INPLACE WOOD POLE (S.O.P.) (GREAT RIVER ENERGY)

- F & I METER AND DISCONNECT—WOOD POLE MOUNTED
 1-60A/2P MAIN BREAKER
 4-20A/1P SIGN/FLASHER BREAKERS
 EXTEND ABOVE METER AND UP WOOD POLE:
 1 1/4" R.S.C. RISER AND WEATHERHEAD
 3-1/c#6
 BETWEEN METER AND DISCONNECT:
 1 1/4" R.S.C.
 3-1/c#6
 EXTEND BELOW DISCONNECT INTO H.H.3:
 2" R.S.C.
 1-3/c#12

S:\MVA\ANOKA COUNTY\2010_FLASHERS\PLANS\2010PLAN.DWG

DRAWN BY: JMG			
DESIGNER: JMG			
CHECKED BY: JMG			
DESIGN TEAM	NO.	BY	DATE

I HEREBY CERTIFY THAT THIS PLAN WAS PREPARED BY ME OR UNDER MY DIRECT SUPERVISION AND THAT I AM A DULY LICENSED PROFESSIONAL ENGINEER UNDER THE LAWS OF THE STATE OF MINNESOTA.

John M. Gray
 Name: John M. Gray, PE
 Lic. No. 22457
 Date: July 22, 2010

SEH
 PHONE: (651) 490-2000
 3535 VADNAIS CENTER DR.
 ST. PAUL, MN 55110

ANOKA COUNTY, MN
 2010 SCHOOL FLASHERS
 CITY OF EAST BETHEL

SCHOOL SPEED ZONE FLASHER/SIGN SYSTEMS
 INTERSECTION LAYOUT-SYSTEM 'C'
 CSAH 86 (SIMS ROAD) AT
 EAST BETHEL/CEDAR CREEK SCHOOLS

FILE NO.	8
ANOKC 112799	
DATE	07/22/2010
	8

S.P. 02-070-008