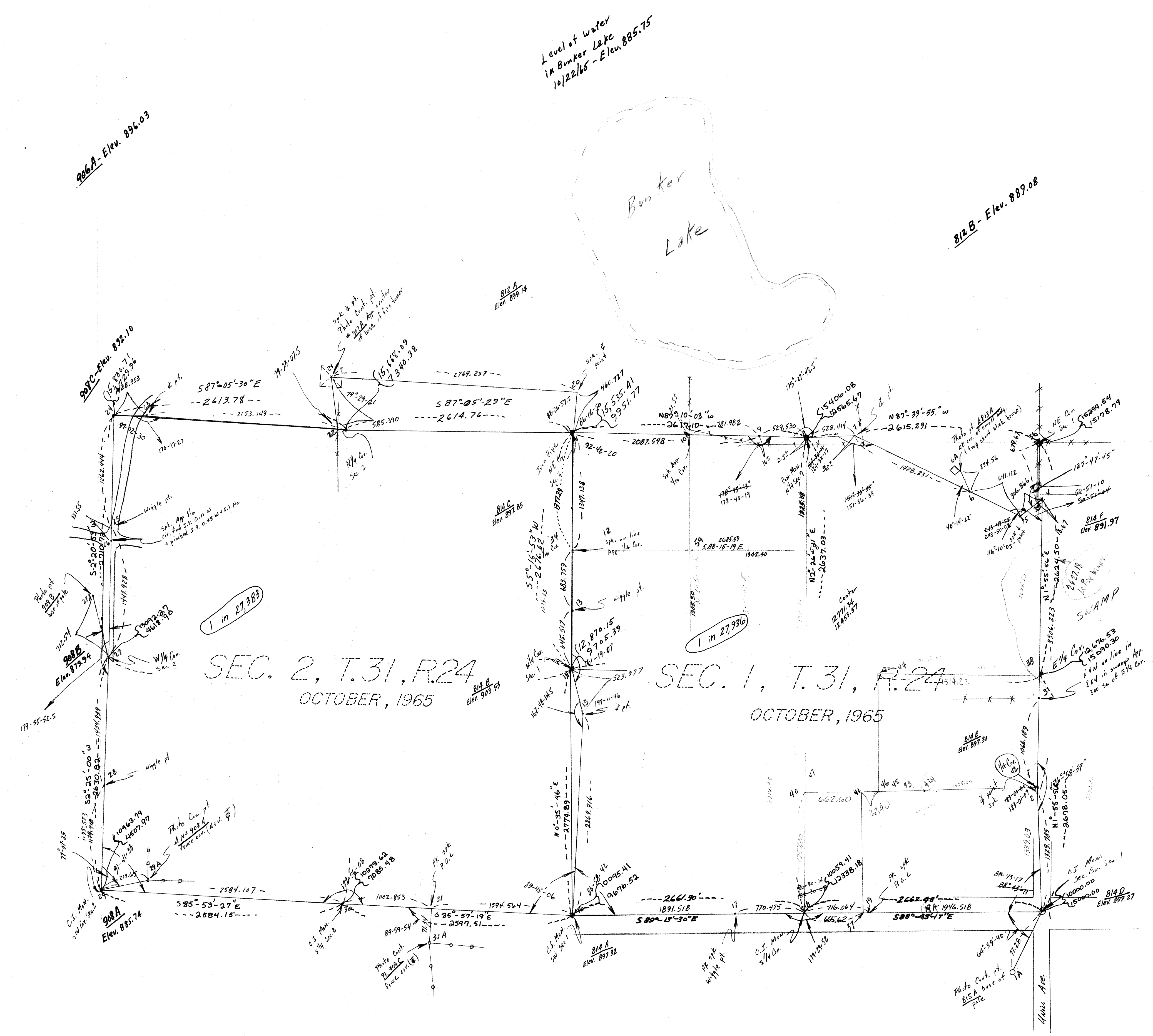


Secs 1 & 2, T.31, R.24 (Coon Rapids)
(Bunker Lake Park)

I-14



SEC. 2, T.31, R.24
OCTOBER, 1965

SEC. 1, T.31, R.24
OCTOBER, 1965

Level of water
in Bunker Lake
10/22/65 - Elev. 885.75

906A - Elev. 896.03

812B - Elev. 889.08

1 in 27,983

1 in 27,980

SWAMP

Union Ave